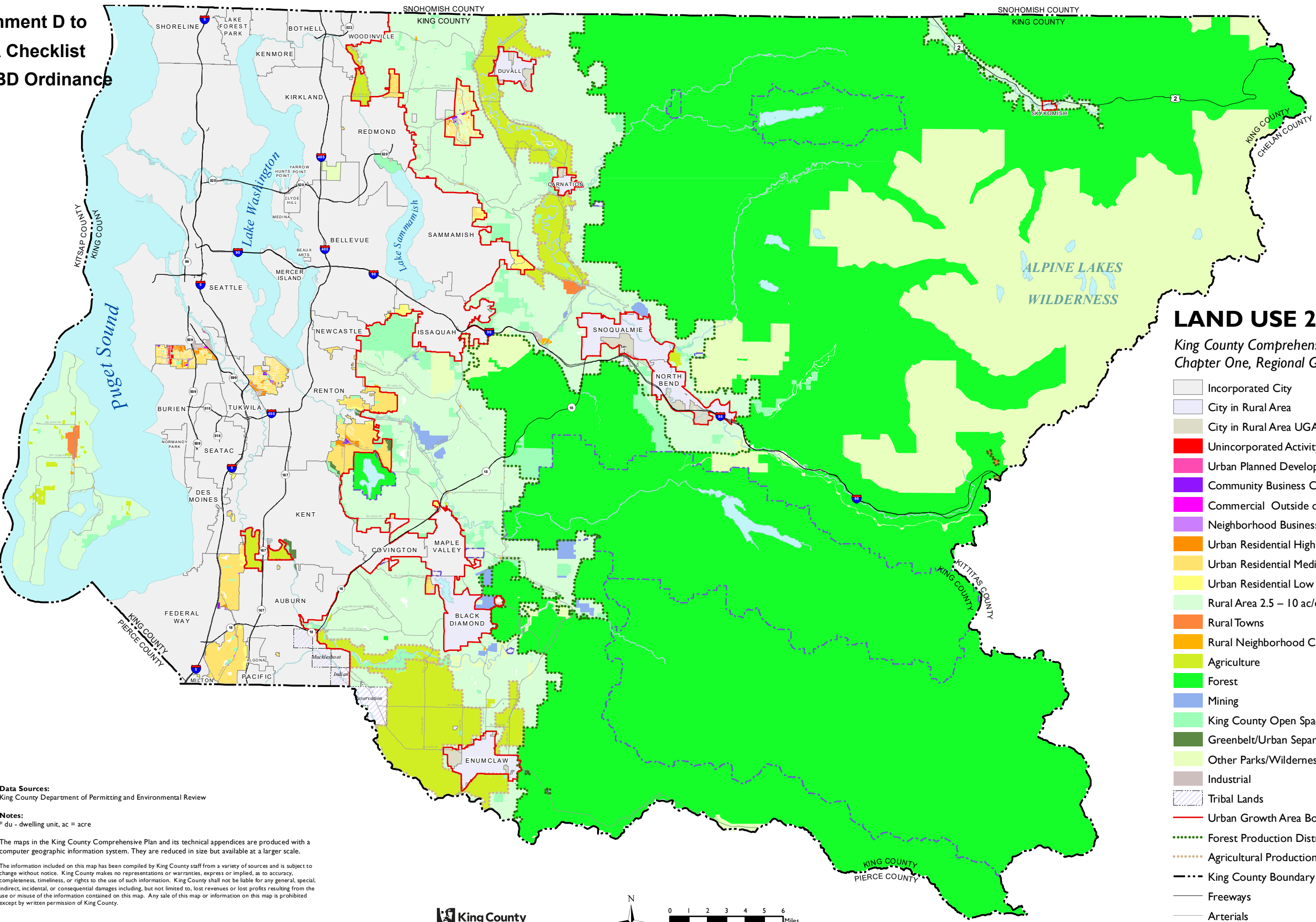


**Attachment D to
SEPA Checklist
for WBD Ordinance**



LAND USE 2020
King County Comprehensive Plan, 2020
Chapter One, Regional Growth Management Planning

- Incorporated City
- City in Rural Area
- City in Rural Area UGA
- Unincorporated Activity Center
- Urban Planned Development
- Community Business Center
- Commercial Outside of Centers
- Neighborhood Business Center
- Urban Residential High >12du/ac*
- Urban Residential Medium 4-12 du/ac*
- Urban Residential Low 1 du/ac*
- Rural Area 2.5 – 10 ac/du*
- Rural Towns
- Rural Neighborhood Commercial Centers
- Agriculture
- Forest
- Mining
- King County Open Space System
- Greenbelt/Urban Separator
- Other Parks/Wilderness
- Industrial
- Tribal Lands
- Urban Growth Area Boundary
- Forest Production District Boundary
- Agricultural Production District Boundary
- King County Boundary
- Freeways
- Arterials
- Municipal Watershed

Data Sources:
King County Department of Permitting and Environmental Review

Notes:
* du - dwelling unit, ac = acre

The maps in the King County Comprehensive Plan and its technical appendices are produced with a computer geographic information system. They are reduced in size but available at a larger scale.

The information included on this map has been compiled by King County staff from a variety of sources and is subject to change without notice. King County makes no representations or warranties, express or implied, as to accuracy, completeness, timeliness, or rights to the use of such information. King County shall not be liable for any general, special, indirect, incidental, or consequential damages including, but not limited to, lost revenues or lost profits resulting from the use or misuse of the information contained on this map. Any sale of this map or information on this map is prohibited except by written permission of King County.

Date: July 2020

