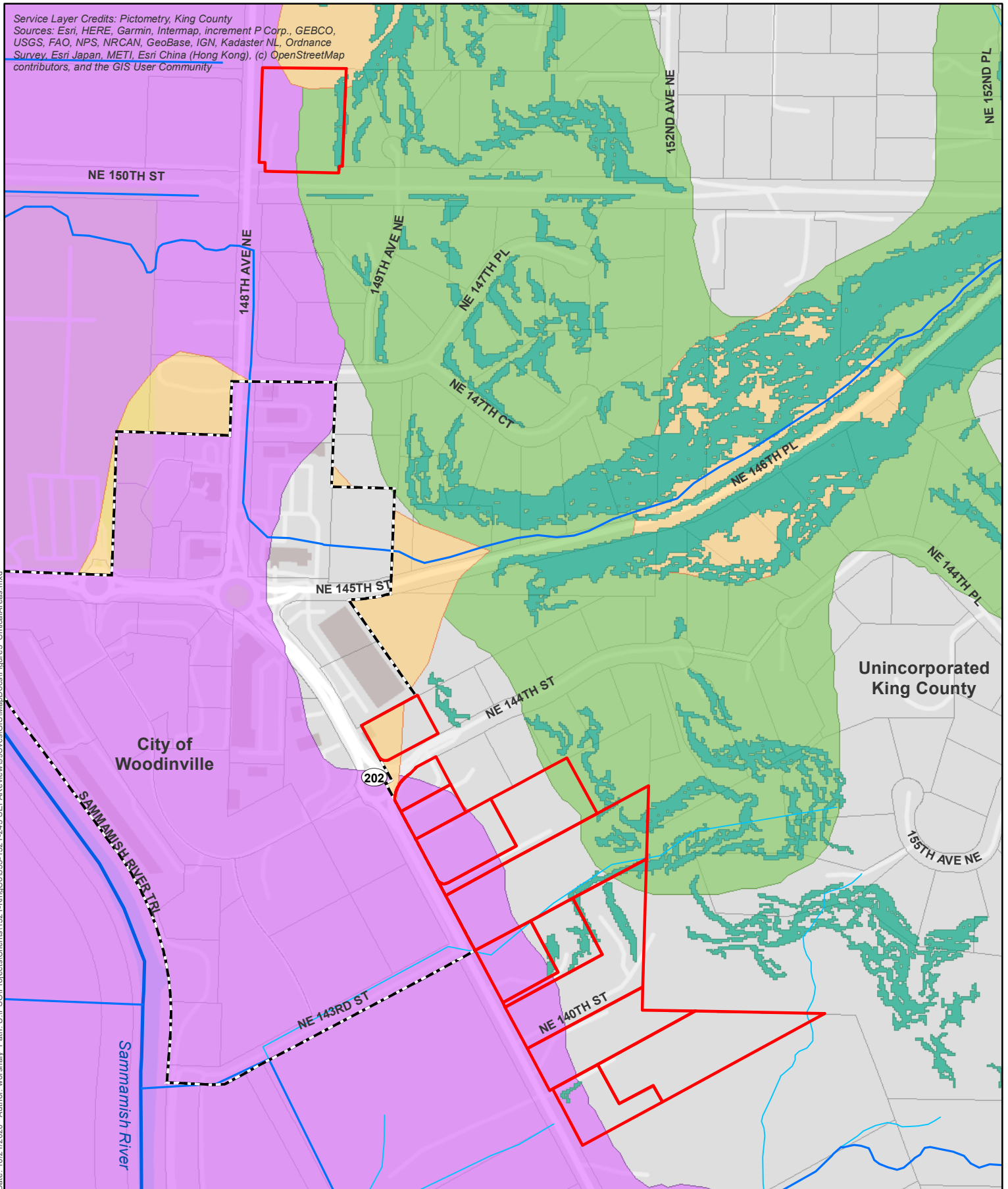


Service Layer Credits: Pictometry, King County  
 Sources: Esri, HERE, Garmin, Intermap, increment P Corp., GEBCO, USGS, FAO, NPS, NRCAN, GeoBase, IGN, Kadaster NL, Ordnance Survey, Esri Japan, METI, Esri China (Hong Kong), (c) OpenStreetMap contributors, and the GIS User Community

Date: 10/21/2020 Author: wershahy Path: U:\PSC\Projects\Clients\1621-KingCo\535-1621-213-SEPAR-view\99\99\GIS\MapDocs\Figure3 CriticalAreas.mxd



Source: King County

**Parametrix**



0 100 200 400 Feet

Demonstration Project A

City Boundary

**Stream Level**

Class 1

Class 2

Class 3

**Critical Areas**

Steep slope hazard

Landslide hazard

Erosion hazard

Seismic hazard

**Attachment C to SEPA Checklist**  
 Demonstration Project Area  
 Critical Areas and Streams

King County, WA