



King County Local Services

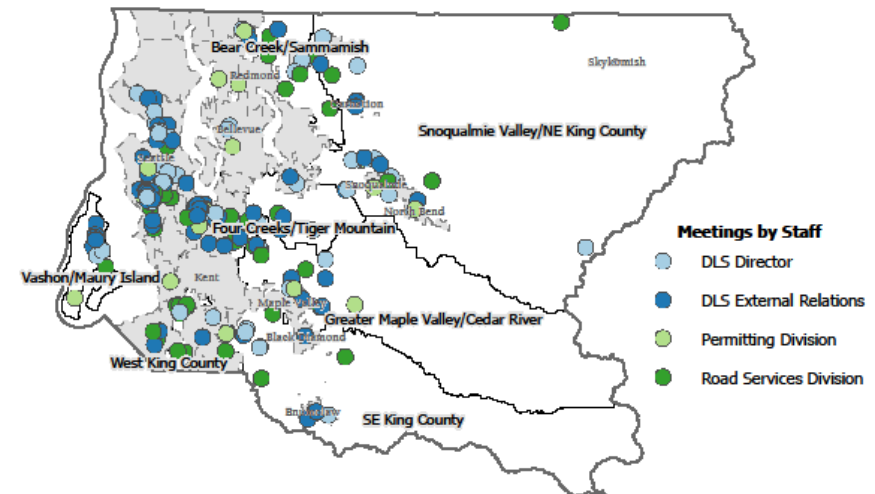
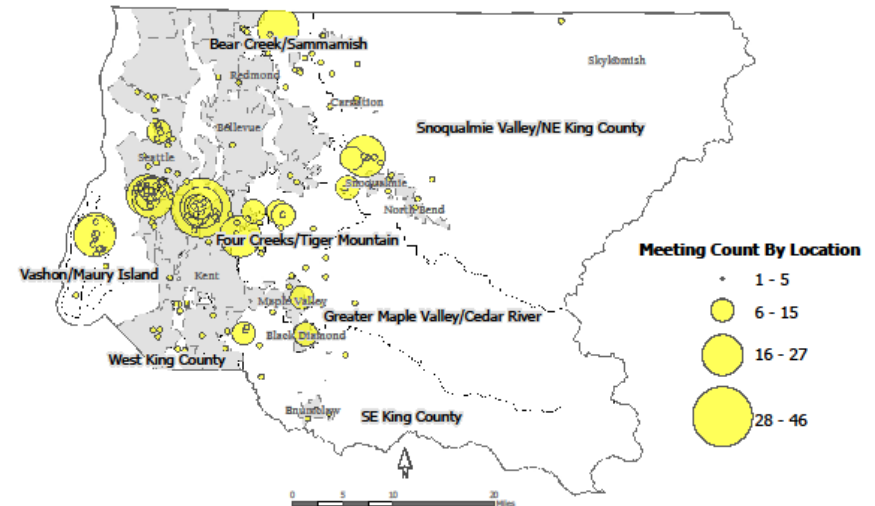
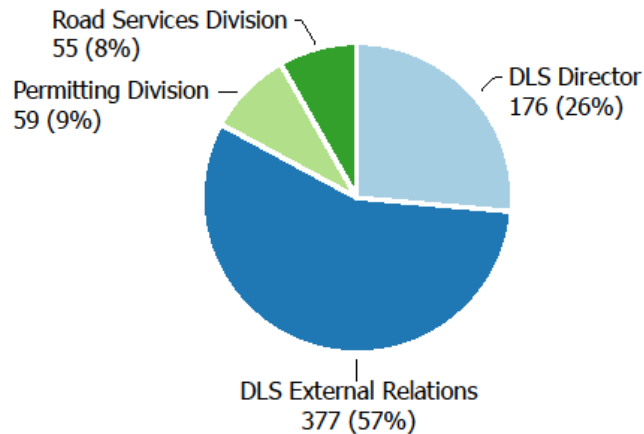
King County Council
Local Services Committee

Director's Report
Monday, February 3, 2020

Community Outreach and Engagement

667
Meetings
1/1/2019 to 12/31/2019

Meetings by Staff

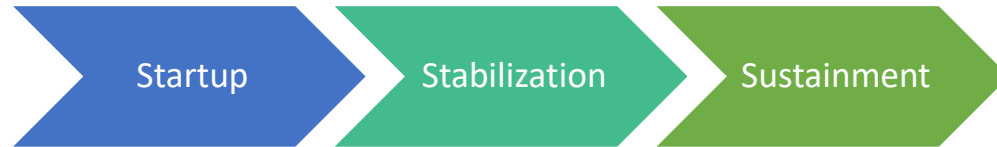


Community field office days

- **Black Diamond Library** – Thursdays, 10-3
- **Fairwood Library** – Wednesdays, 3-6
- **Fall City Library** – Tuesdays, 3-6
- **Skyway Library** – Wednesdays, 3-6
- **Vashon Chamber of Commerce** – Tuesdays, 9-1
- **White Center Library** – Thursdays, 3-6
- **Woodinville Library** – Tuesdays, 10-3



Proactive Social and Other Media



Unincorporated Area News sent to over 10,000 subscribers

- Subscriber #'s almost doubled since 2018
- 40% open (page) rate – 4x higher than average

Local Services Website

- Average daily site visits: 5-7,000; recent snow day: 130,000

Social Media Feeds – Follower Gains During 2019

- 400 followers on Instagram (started Nov. 2018)
- 800 followers on Facebook
- 2,000+ followers on Twitter
- 80+ messages on Next Door (alerted by UKC zip codes)
- Thousands of shares and organic views



King County Conservation Corps Collection and Cleaning Efforts

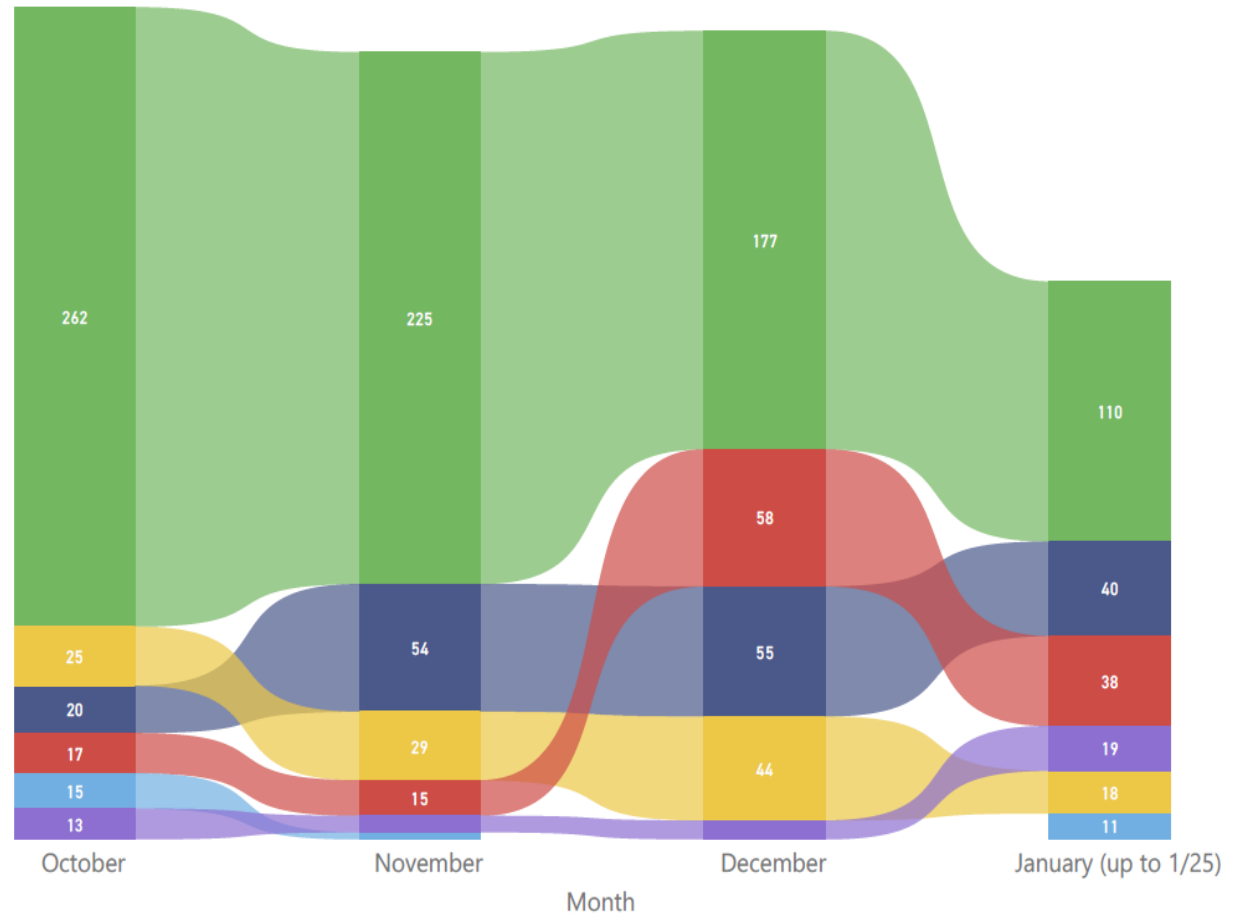
Type: ● Trash Pieces ● Overflowing Cans ● Biological Waste ● Sharps ● Poles Cleaned ● Large Items

69

Work Events

45

Hours of Weeding



King County
Local Services

2020 Local Services Legislation

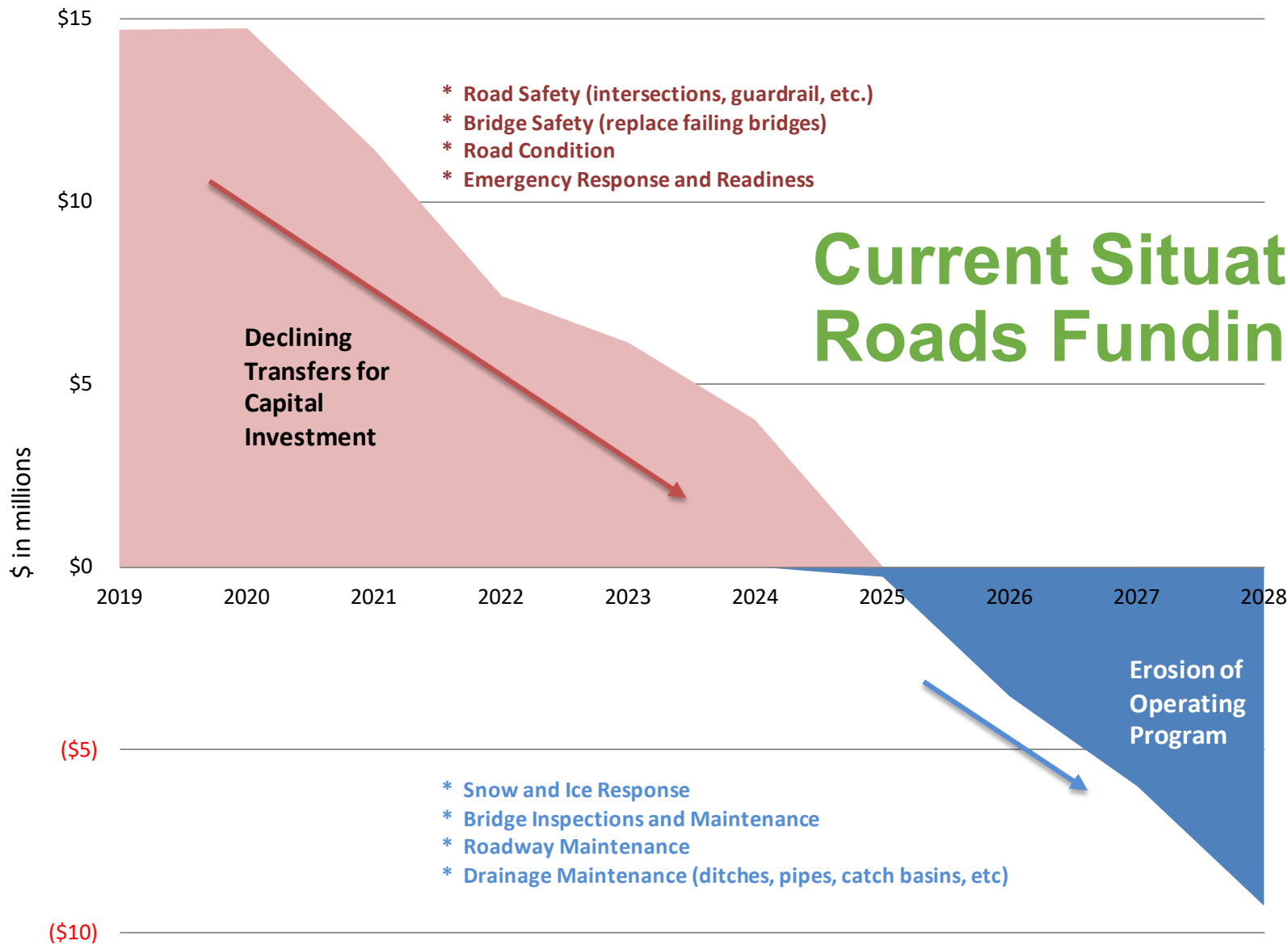
Legislative Transmittal	To Council (Local Services Committee)
Various water/sewer plans	Upon delivery
FEMA Audit / Flood Code Update	January, 2020
Fireworks Prohibition	January / February, 2020
Low Impact Development Code	Q2 / Q3
Possible Roads Levy Lid Lift	Q2?
Telecommunications Code Update	June, 2020
Fall City Community Ctr. Feasibility	June, 2020 (Sync w subarea plan)?
2019 Bridge Report	Q3
Roads Concurrency Map Update	Q3
Zoning Omnibus Rewrite	Q3 / Q4?
Various Road Vacations	Upon delivery



Roads Funding



King County
Local Services



Current Situation: Roads Funding Cliff



Bridges at Risk



Fifteen Mile Creek No. 493C

- Creosote treated, timber in the ordinary high water collecting debris - Compromising hydraulic opening & structural vulnerability
- Timber cap has open end rot



Roadway and Sidewalks at Risk



Skyway Area: Deteriorating pavement, upheaved, narrow sidewalks – old infrastructure beyond designed lifespan.



King County
Local Services

Potential Levy Lid Lift

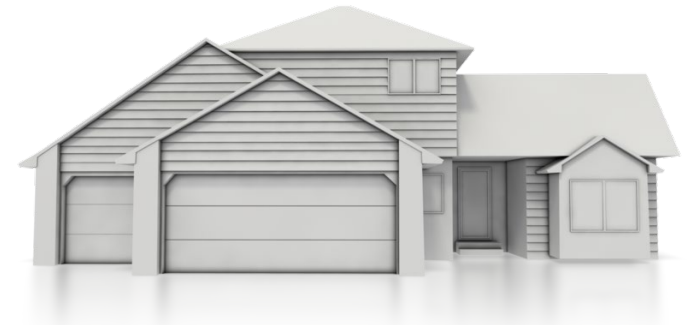
Primary or general election - (August or November 2020)

- Year 1: Increase to \$2.25 statutory limit
- Years 2-6: Allows for inflationary growth (CPI + population)
- After Year 6: Limited to legal maximum (currently one percent)
- Yield = ~ \$164 million / eight years

(based on King County, Office of Economic & Financial Analysis (OEFA), August Forecast)

Potential Impacts – Junior Taxing Districts (water / sewer, hospital etc.)

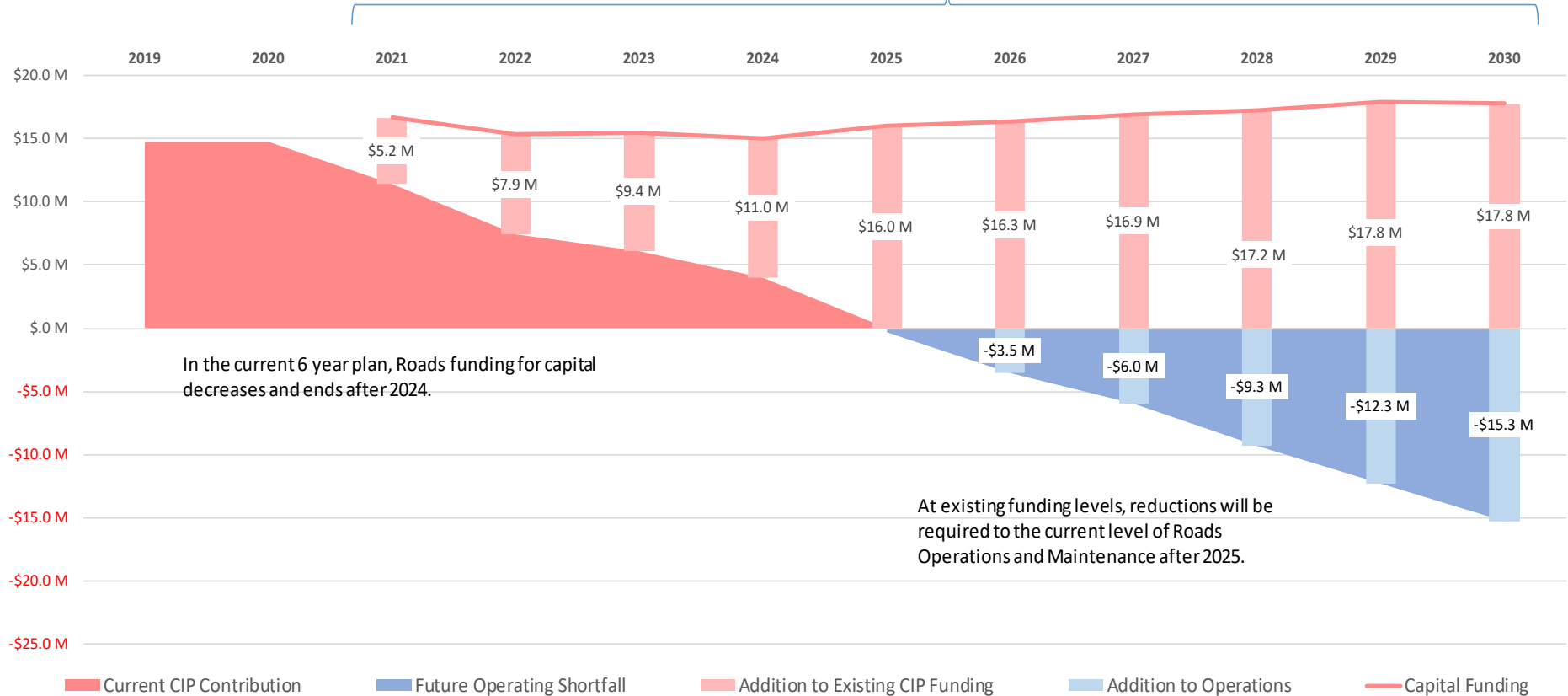
Levy Impact to Median Unincorporated Home in 2021 = ~ \$224



King County
Local Services

Stabilize the Program for Ten Years

Operations & Maintenance - Core Preservation & Safety - 6 Bridge Replacements* - 4 Intersection/Safety Projects* - New Bridge Upgrade Program - Paving 50-60 Centerline Miles

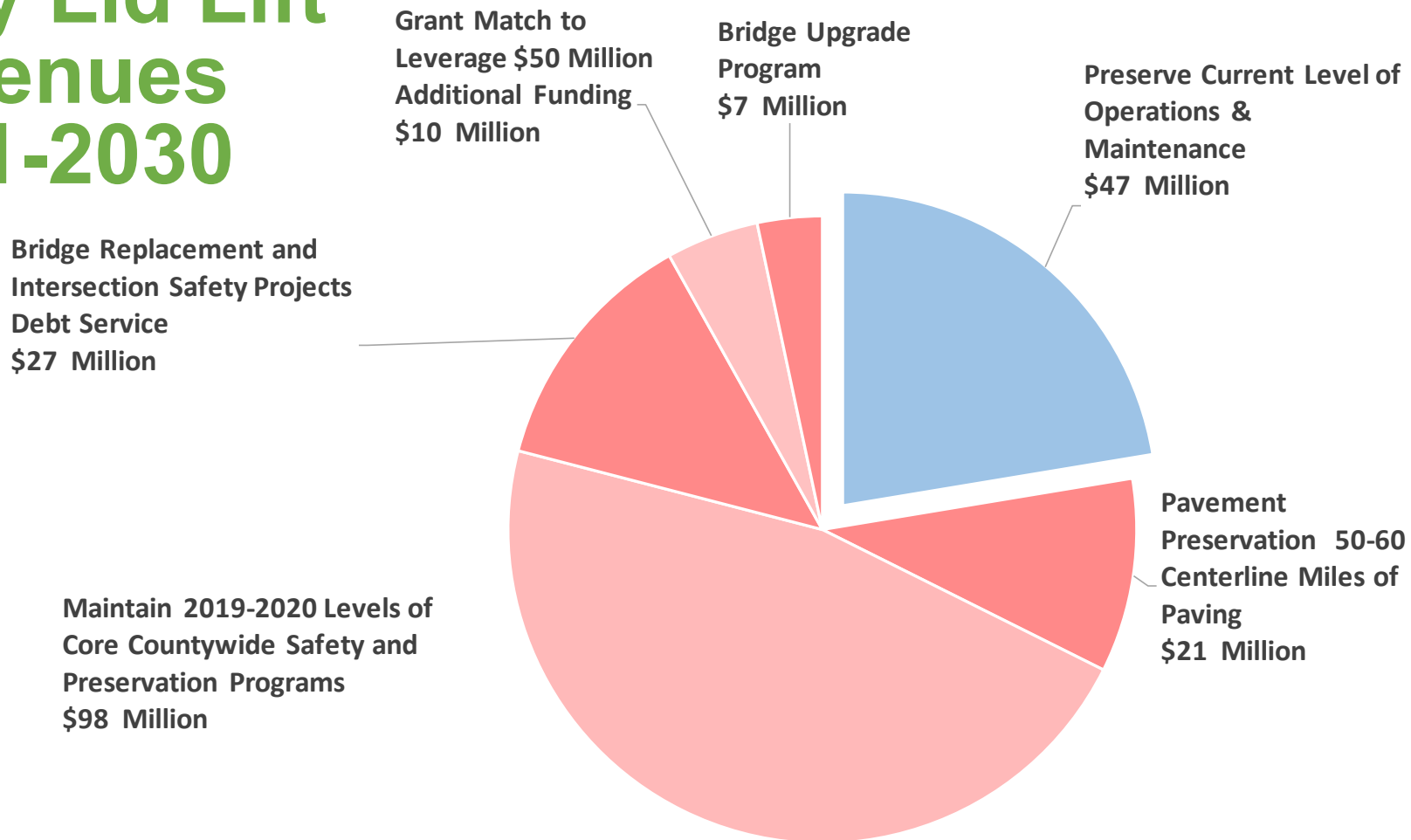


* Funded through bond proceeds, with debt service paid in the Road Operating Fund.

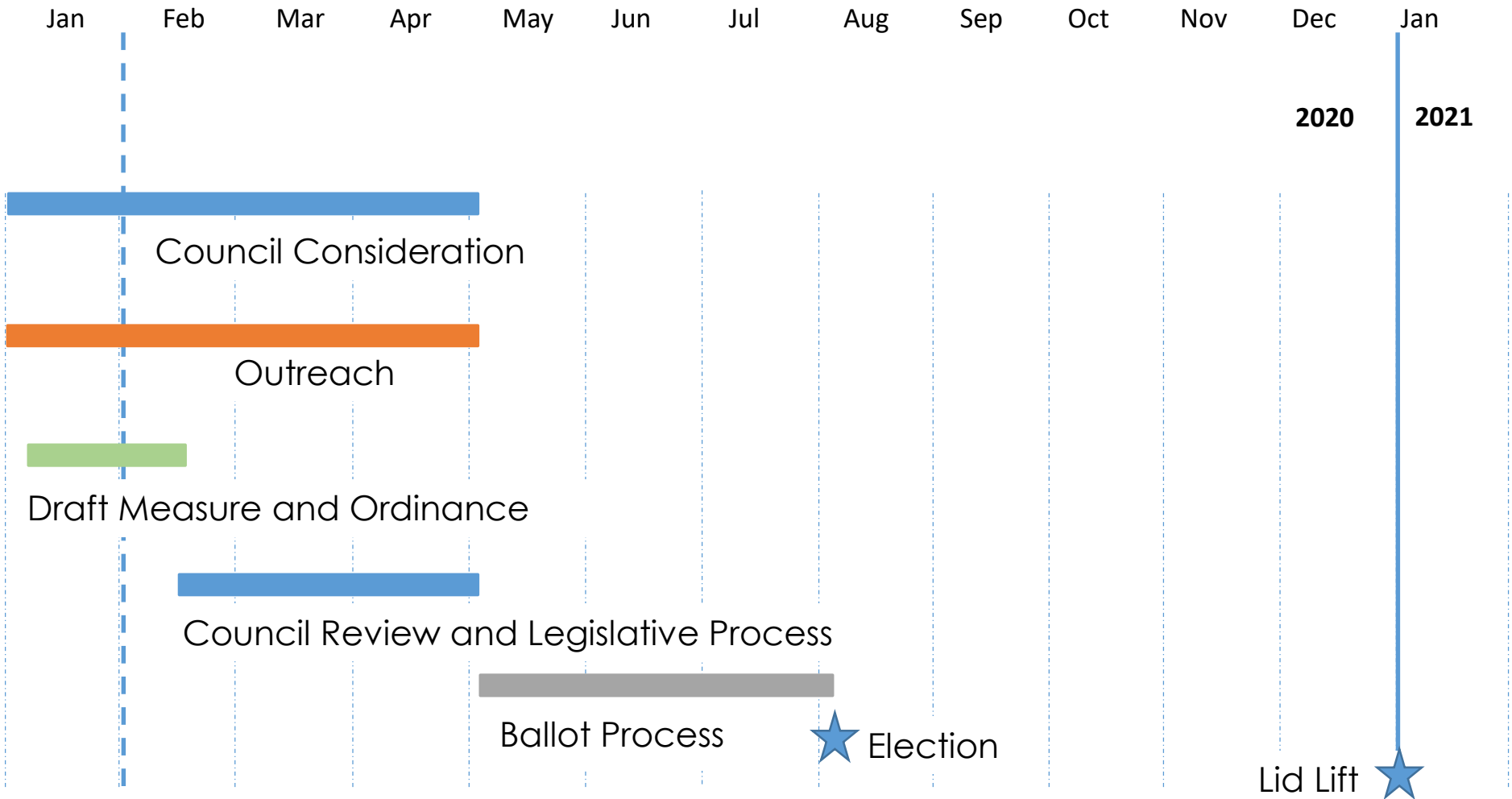


King County
Local Services

Investing Levy Lid Lift Revenues 2021-2030



Lid Lift Schedule



Questions?



King County
Local Services