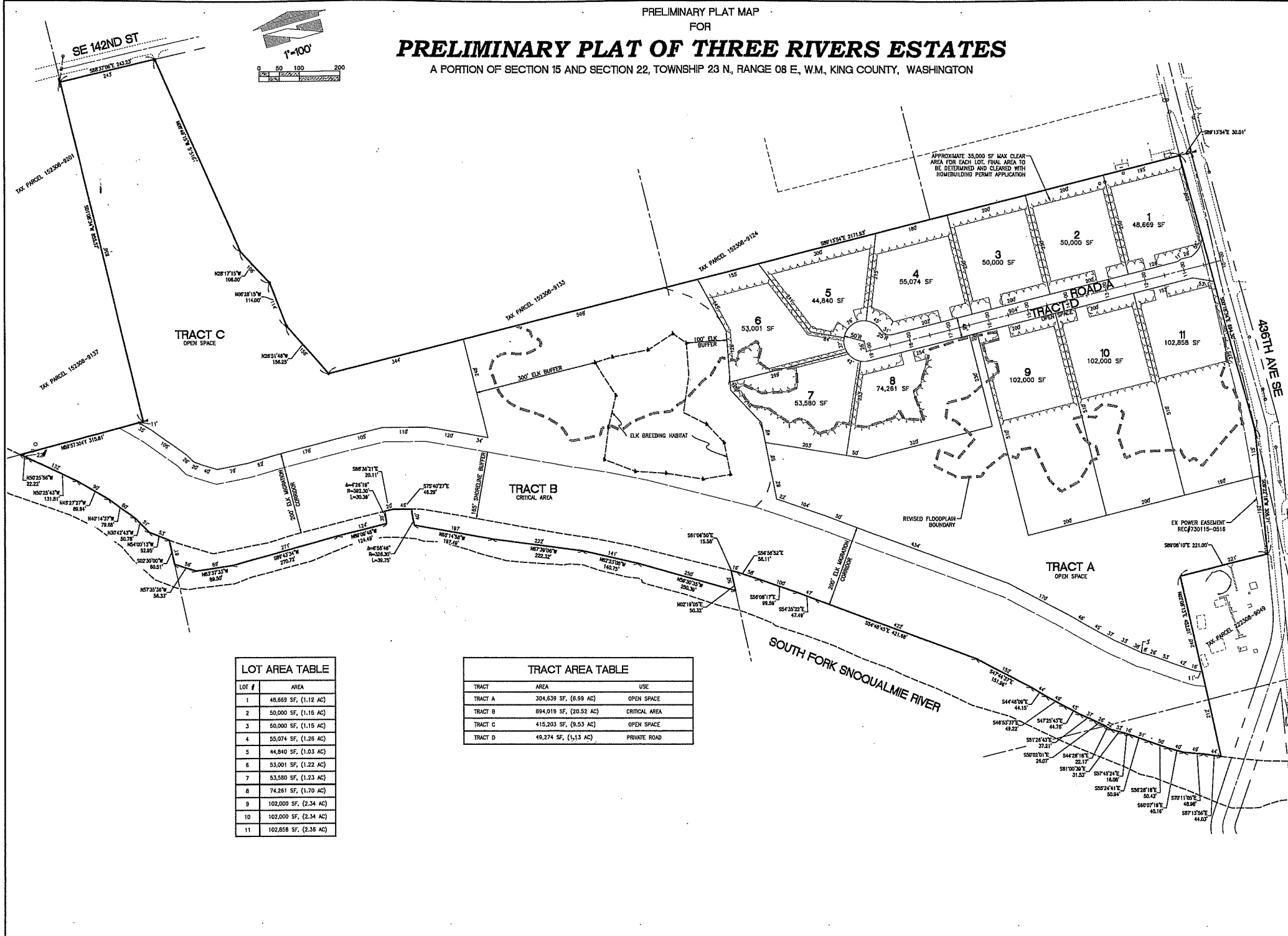


PRELIMINARY PLAT MAP  
FOR

# PRELIMINARY PLAT OF THREE RIVERS ESTATES

A PORTION OF SECTION 15 AND SECTION 22, TOWNSHIP 23 N, RANGE 08 E, W.M, KING COUNTY, WASHINGTON



| LOT # | AREA                  |
|-------|-----------------------|
| 1     | 48,669 SF, (1.12 AC)  |
| 2     | 50,000 SF, (1.16 AC)  |
| 3     | 50,000 SF, (1.16 AC)  |
| 4     | 55,074 SF, (1.26 AC)  |
| 5     | 44,840 SF, (1.03 AC)  |
| 6     | 53,001 SF, (1.22 AC)  |
| 7     | 53,580 SF, (1.23 AC)  |
| 8     | 74,261 SF, (1.70 AC)  |
| 9     | 102,000 SF, (2.34 AC) |
| 10    | 102,000 SF, (2.34 AC) |
| 11    | 102,858 SF, (2.36 AC) |

| TRACT   | AREA                   | USE           |
|---------|------------------------|---------------|
| TRACT A | 304,639 SF, (6.99 AC)  | OPEN SPACE    |
| TRACT B | 894,019 SF, (20.52 AC) | CRITICAL AREA |
| TRACT C | 415,203 SF, (9.53 AC)  | OPEN SPACE    |
| TRACT D | 49,274 SF, (1.13 AC)   | PRIVATE ROAD  |

2 12/19/19 W/ BY: [Signature] REISED FOR COUNTY COMMENTS  
 1 12/19/19 W/ BY: [Signature] REISED FOR ELK BREEDING HABITAT  
 1 12/19/19 W/ BY: [Signature] REISED FOR ELK BREEDING HABITAT

Title:  
 PRELIMINARY PLAT MAP  
 FOR  
 THREE RIVERS ESTATES

For:  
 KUSAK TREE FARM, LLC  
 3910 46TH AVE S  
 SEATTLE, WA 98118



Scale:  
 Horizontal: 1"=100'  
 Vertical: N/A

Designed: [Blank]  
 Drawn: [Blank]  
 Checked: [Blank]  
 Approved: [Blank]  
 Date: 1/25/20

18015 72ND AVENUE SOUTH  
 KENT, WA 98032  
 (425)251-8222  
 (425)251-8782 FAX  
 CIVIL ENGINEERING, LAND PLANNING,  
 SURVEYING, ENVIRONMENTAL SERVICES



Job Number:  
 17508  
 Sheet:  
 2 of 6