

King County  
**METRO**

***Mobility Framework Workshop***  
***RTC***

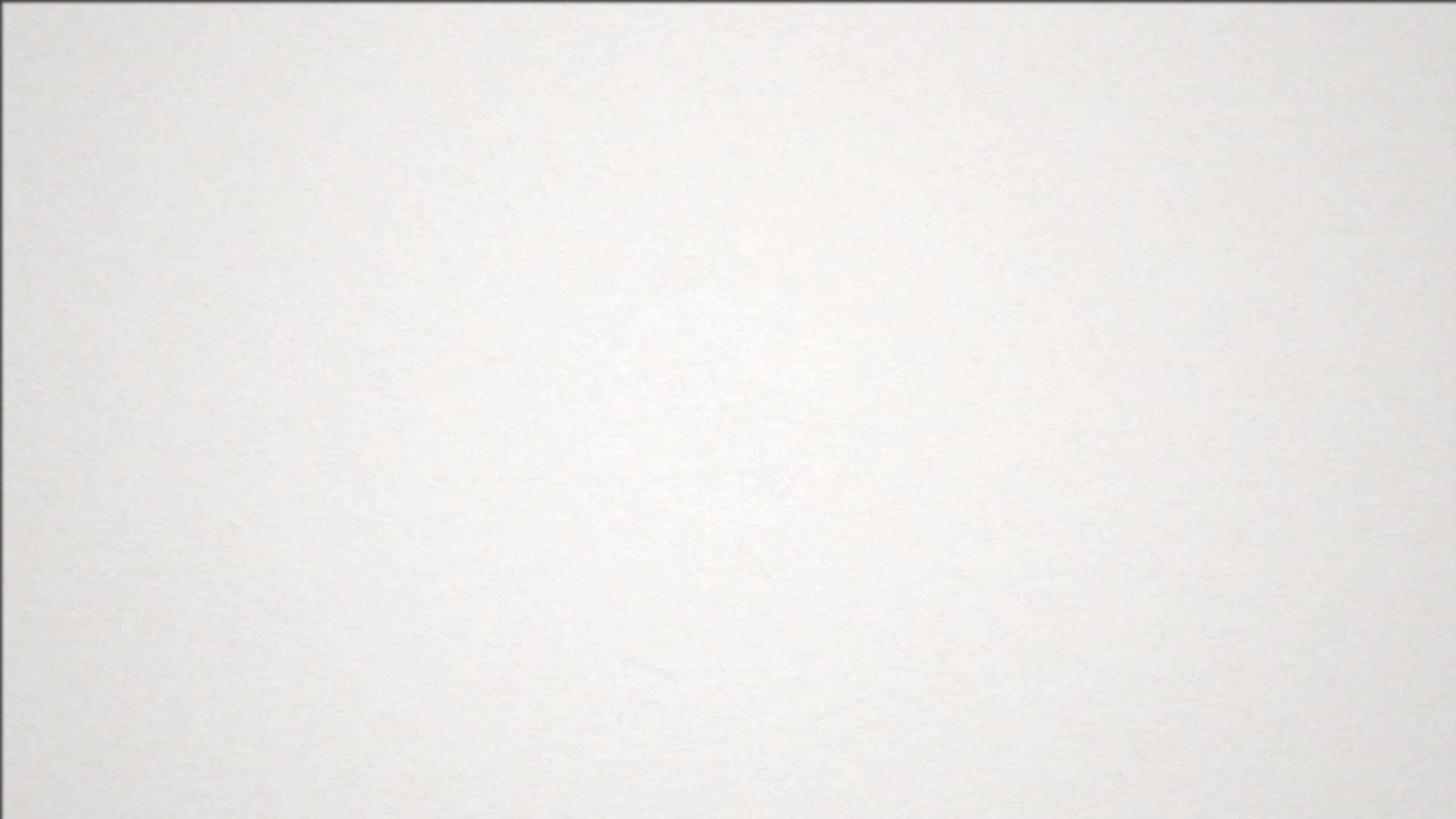
***May 15, 2019***

## Video: Becoming a Mobility Agency

**As a value-driven, data-supported mobility agency, Metro will:**

- Develop a regional mobility ecosystem with transit at the center and complementary shared mobility services
- Provide near door-to-door, seamless, multi-modal mobility solutions
- Lower number of vehicles, vehicle miles traveled, congestion, and energy use
- **Be safe, sustainable, and equitable**

*Video on next slide*





## Metro's Goals

**Framework:** to ensure policies and investments put people first, advance equity, meet mobility needs, and reduce regional greenhouse gas emissions

**Regional Planning:** to develop an ambitious yet realistic plan to fund and implement METRO CONNECTS while advancing equity and addressing climate change.



# Handout: Overview, High-Level Timeline & Deliverables

**In 2019-2020,  
Metro will center  
equity and  
sustainability in  
policies and  
investments**

## Mobility Framework (Motion 15253)

### Mobility Framework (Motion 15253)

Develop a regional Mobility Framework that will ensure that innovations in mobility put people first, use public space equitably and efficiently, and are coordinated with transit policies and regional funding strategies.

- Guiding principles
- Review of emerging technologies, workforce trends
- Opportunities for Metro
- Engagement with community

### Scoping Document to be transmitted by April 18, 2019

- Context: Metro's transition to a mobility agency and commitment to equity
- Outline for Mobility Framework
- Expected work tasks to complete Framework
- Connection to Regional Planning effort
- Timeline
- Budget narrative

### Framework anticipated by October 31, 2019

- Guiding principles for the equitable implementation of mobility
- Existing conditions, best practices, opportunities for Metro
- Recommended changes to Metro policies, programs, services, investment strategies

Engagement with communities and elected officials about policy implications of major issues will inform framework.

### Framework will guide policy updates in 2020

Updated policies, including Service Guidelines and Strategic Plan for Public Transportation, that reflect recommended changes in Mobility Framework

## Regional Planning (Motion 15252)

### Regional Planning (Motion 15252)

Undertake regional planning, coordination, and funding efforts to address the implementation of METRO CONNECTS and the needs of King County's transportation infrastructure.

- Regional planning effort during 2019
- Updated information for METRO CONNECTS
- Engagement with community

### Status Report to be transmitted by May 31, 2019

- Regional Planning Effort: summary of progress to date
- Updated information: plans, scope, timeline to update information for METRO CONNECTS
- Engagement: summary of progress to date

### Timeline will depend on engagement process

Proposals for updated or increased service

### Regional decisions will guide implementation

Service implementation based on available funding and desired service plan

# What do we mean by equity and inequities?

## “Equity: A system of fairness.”

full and equal access to opportunities, power, and resources

so that all people achieve their full potential and thrive

journey toward well-being as defined by those most negatively affected



## Inequities

differences in well-being that are systemic, patterned and not random

disadvantage an individual or group in favor of another

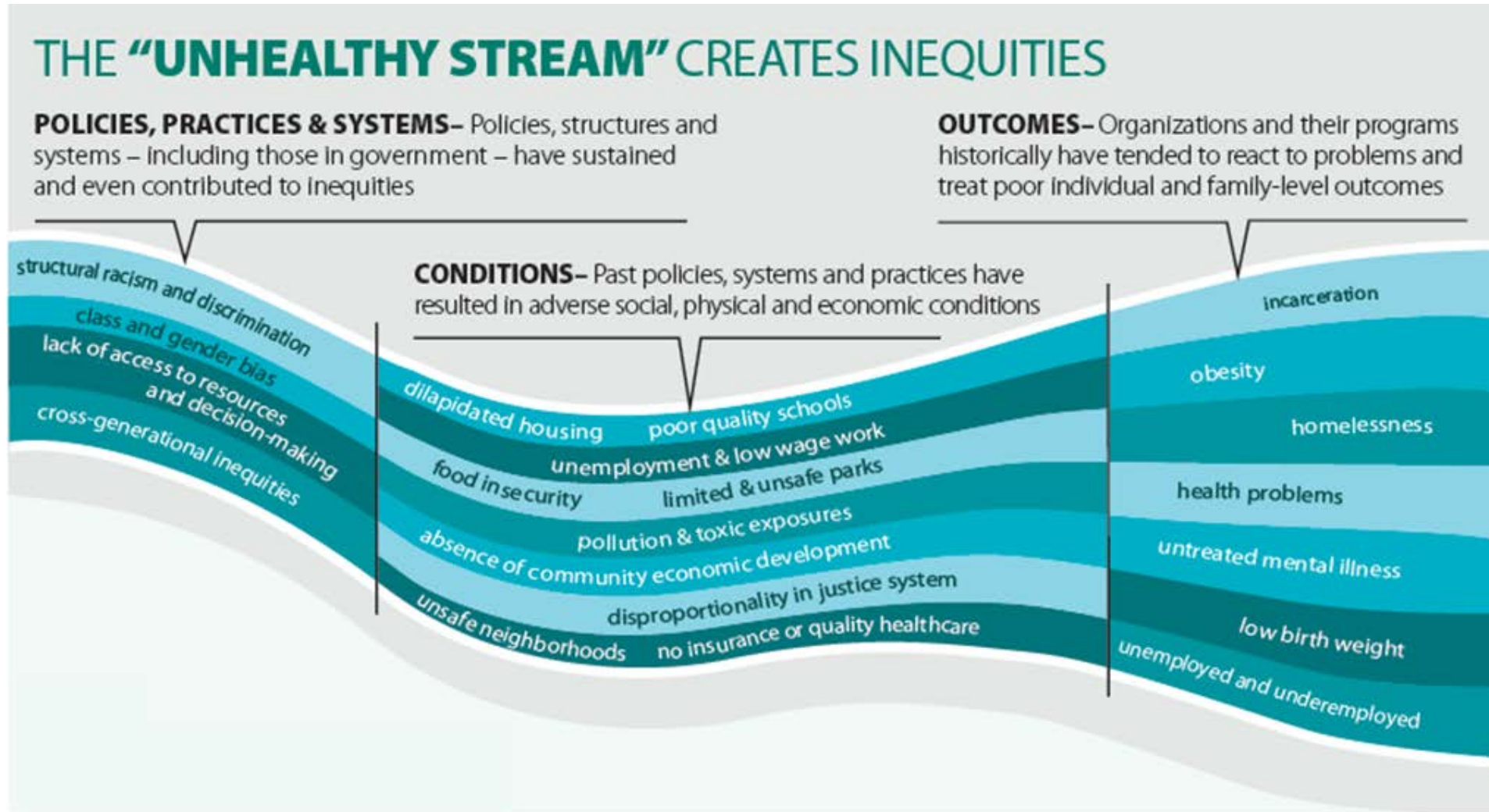
# What is inequity?

## In the context of Metro:

Investments that have historically been made to the advantage of certain populations and/or geographic areas, to the disadvantage and expense of others



# ESJ Theory of Change





# Targeted Universalism



## Leading with Racial Justice

**King County is leading with racial justice** because historical and racial inequities continue to affect all of us, and our region's ability to live well and thrive.



### SO ALL PEOPLE HAVE OPPORTUNITIES TO THRIVE

#### KING COUNTY INVESTS...



Upstream, and where  
needs are greatest,



in community  
partnerships,



and in employees,



with transparent  
and accountable  
leadership.

# What do we mean by sustainability?

**Climate changes threatens the health and safety of people, the economy, & environment.  
Communities of color, low-income people, & others bear the greatest burden.**

Transportation emissions are 36% of regional greenhouse gas emissions (GHG).

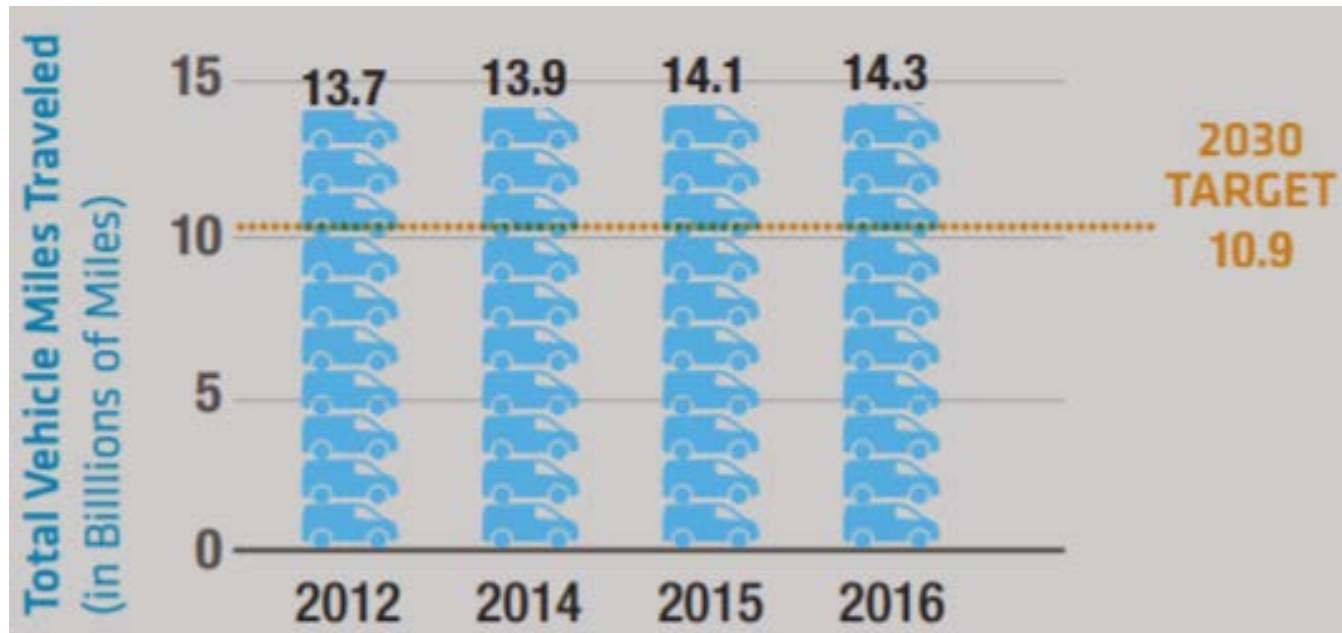
Framework will consider how Metro can meet the emissions reduction goals of the Strategic Climate Action Plan:

- 25% by 2020
- 50% by 2030
- 80% by 2050

*Percentages are compared to 2007 baseline*



# Regional vehicle mileage traveled is increasing





# Climate Change is a threat multiplier



UW Climate Impacts Group, 2018.

## Work Tasks - Research & Analysis

### Consultant team will assist Metro. Tasks include:

- Travel trends and mobility analysis: update of demographic and travel trends, with analysis of implications for mobility, equity, and GHG emissions
- Review of best practices and opportunities to better advance equity and address climate change through areas like:
  - Mobility services
  - Emerging technologies
  - Policies for allocation of public space
  - Land use and zoning patterns
  - Transit accessibility
  - Workforce trends

## Work Tasks - Engagement

### Consultant team and community-based organizations will assist with:

- 1) Equity Cabinet of approx. 20 paid community leaders representing low-income people, communities of color, immigrants and refugees, limited English proficiency populations, people with disabilities, and others countywide.
  - *Will make recommendations to KC Executive and Council.*
- 2) Briefings, workshops, interviews, and/or discussions with partners such as RTC on principles and policy changes.
- 3) Online workshops, briefings, and other activities to engage transit riders on principles and policy changes.



## Work Tasks - Guiding Principles & Recommendations

**Metro will engage with communities, elected officials, and others to shape:**

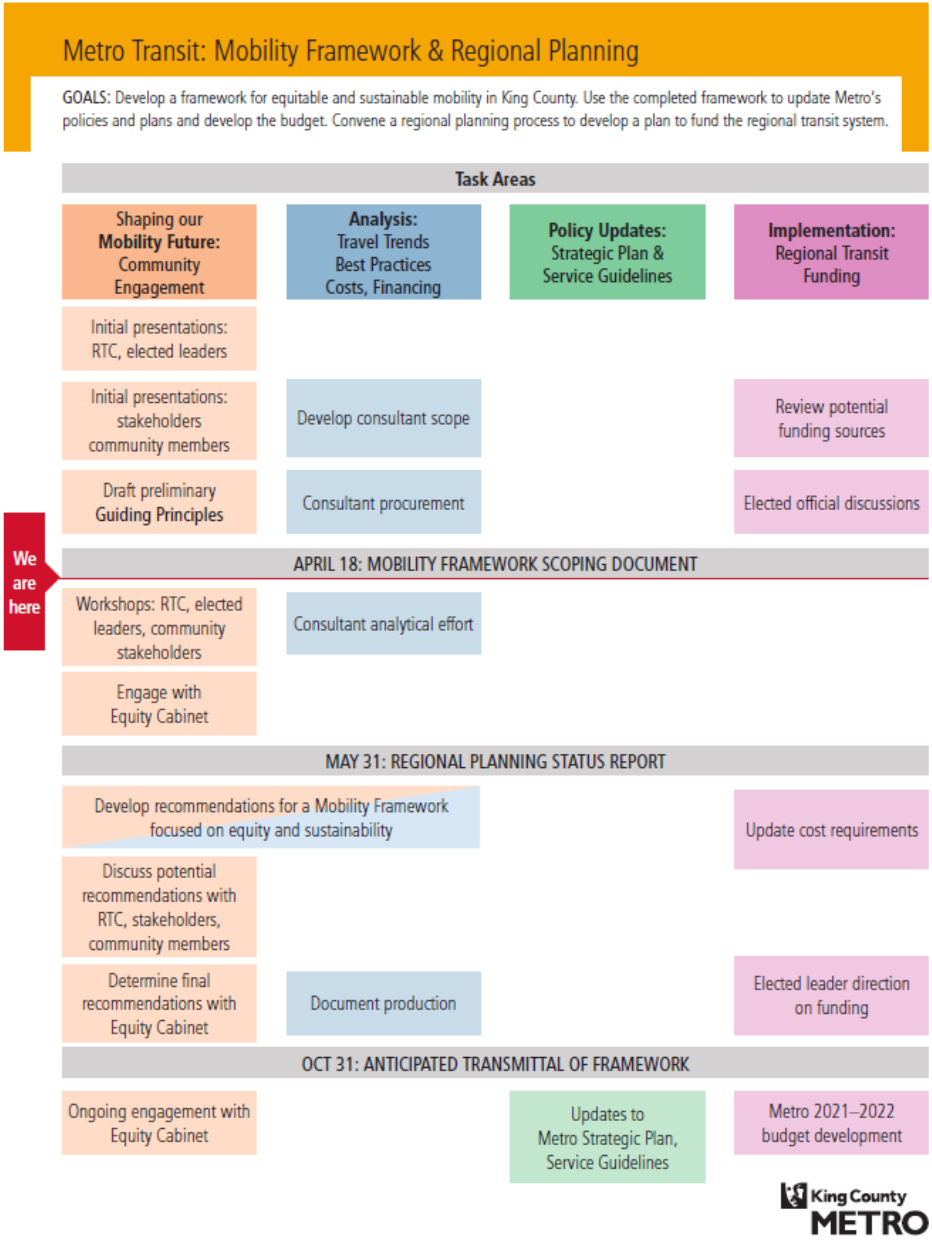
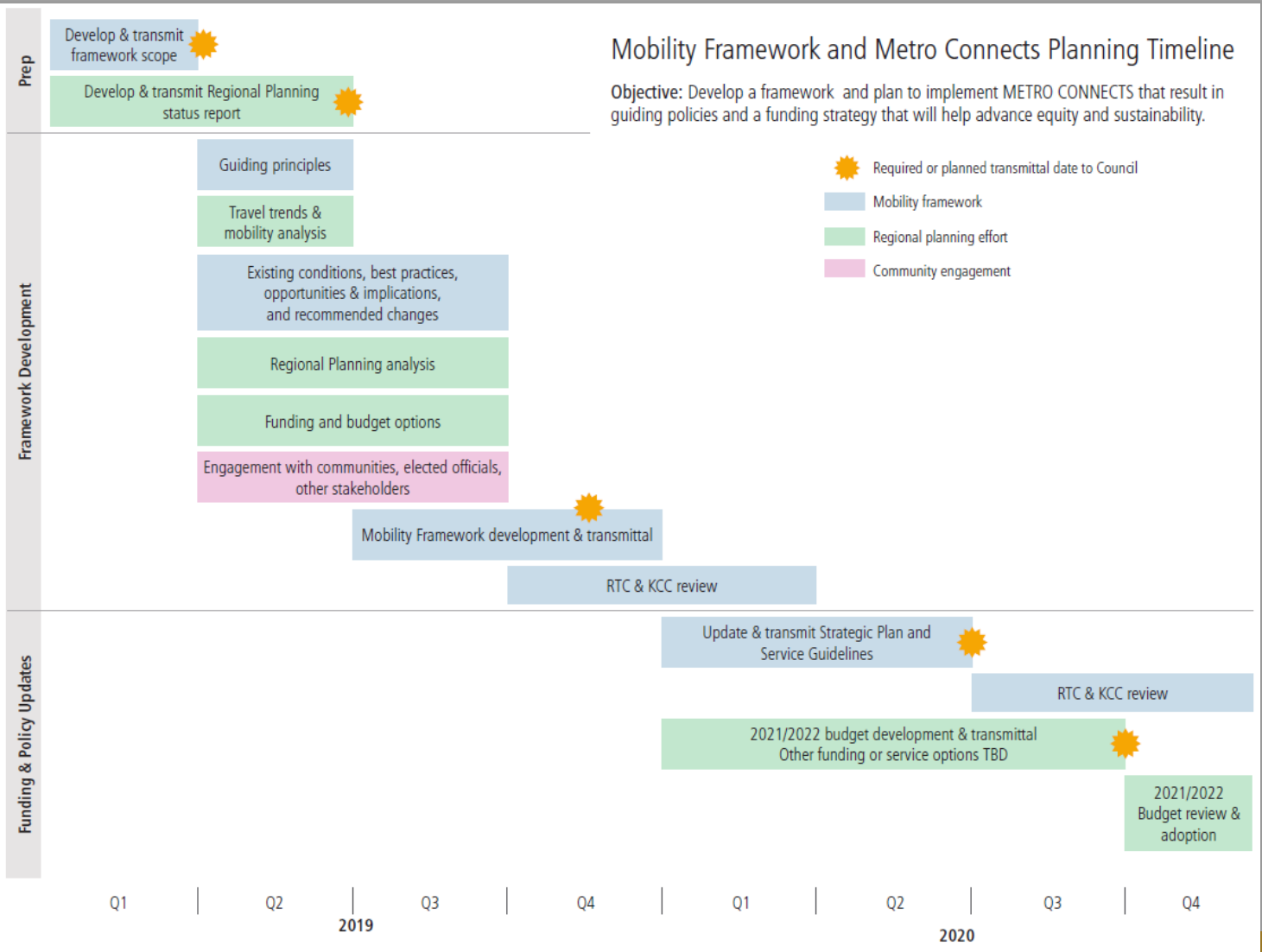
- 1) Guiding principles for the equitable and sustainable implementation of mobility.
- 2) Recommendations for centering equity and sustainability in policies and investments (*informed by principles*).

**Travel trends and mobility analysis, best practices review, and engagement will inform this work.**





# Handouts: Timelines





# WORKSHOP

## Handout: Guiding Principles

# **Guiding principles will inform recommended actions to center equity & sustainability.**

### Process

- 1) Metro will seek feedback from RTC and others on draft principles and associated potential policy changes.
- 2) An Equity Cabinet will make a final recommendation to the King County Executive and Council re-principles and proposed policy changes to include in framework.
- 3) RTC will review and refine.
- 4) KCC will adopt the final framework (including principles and recommended policy changes).

## Feedback: Part 1

As you consider these draft principles and what they might mean for the regional transit system, what opportunities do you see and what concerns do you have?

*10 minutes*

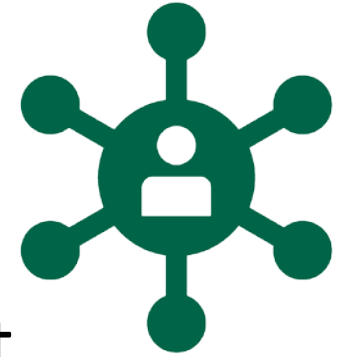




## **Focused Discussion Topics (20 minutes each)**

1. Develop an integrated mobility system
2. Invest where needs are greatest

## Develop an Integrated Mobility System



- What is our vision for a regional mobility system that contributes to livable communities, a thriving economy, and a sustainable environment? What elements must be included and addressed?
- How can Metro and local jurisdictions work together to achieve this vision?

## Invest Where Needs Are Greatest



- What would it mean as a region to invest where needs are greatest?
- What should Metro and local jurisdictions do differently to achieve more equitable outcomes and address climate change through investments in areas like fixed-route services, innovative mobility options, transit improvements, capital projects, etc?

# CLOSING