



King County

PARKS

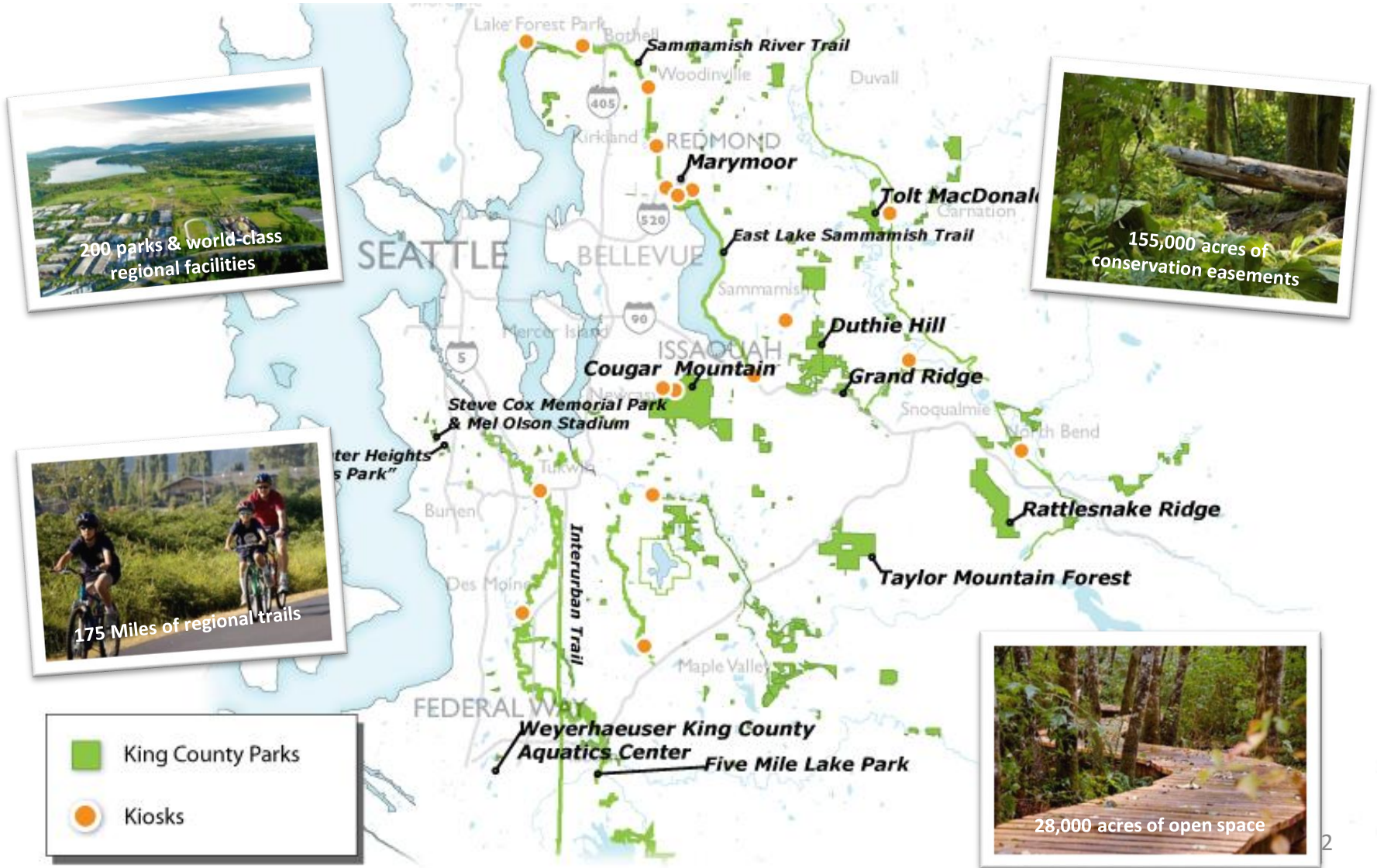
Your Big Backyard

KING COUNTY PARKS

Local Government Update | Committee of the Whole | Sept. 7, 2016

2 MILLION RESIDENTS

200 PARKS | 28,000 ACRES | 175 MILES OF TRAILS



VISION

Parks, trails, and natural lands for all, sustained with the cooperative efforts of our community.




Providing
regional
local, and rural
recreational
facilities

Partnering with
business and
community

Connecting the
county: Regional
Trails System and
open space
corridors

Business Plan

- **Regional Parks, Open Space and Trails.** Transfer local non-regional assets in urban areas.
- **Provide local, rural parks** for residents of unincorporated urban and rural King County.
- **Maximize business revenues** and be **entrepreneurial**. Examples include User fees, partnerships with Go Ape, Cirque du Soleil, and Concerts at Marymoor.
- **Strategic partnerships** – the Community Partnerships and Grants program have leveraged \$17.5M in grants to partners that have built \$60M worth of new recreation facilities.

- 
- An aerial photograph of Marymoor Park and its surroundings. In the foreground, there's a large parking lot with many cars, several large industrial or warehouse-style buildings, and a baseball field. To the right, a colorful striped tent is set up on a grassy area. In the middle ground, there's a large green field, possibly a golf course or a large sports field. In the background, a large body of water (Marymoor) is visible, surrounded by lush green hills and mountains under a blue sky with some clouds.
- 3 million visitors annually
 - 640 acres
 - 25 athletic fields; 4 tennis courts
 - 40 acre off-leash dog area
 - Rock Climbing structure
 - Event area, concert venue and historic Clise Mansion - attracts major events (Cirque, Washington Brewers Festival)
 - Passive recreation including trails and bird watching areas

Marymoor Park

- Olympic-sized competition pool
- Dive tank with springboards, platforms
- Recreational pool
- Conference center / banquet hall
- 70+ events held annually, including major national competitions

Weyerhaeuser King County Aquatic Center




- 
- An aerial photograph of a vast, green forested valley. In the background, there are rugged mountains, some with patches of snow. The foreground is filled with dense evergreen trees. A small town or village is visible in the middle ground, nestled in the valley. The sky is blue with some light clouds.
- 22,000 acres of forests and natural lands
 - 180 miles of backcountry trails
 - 5 working forests
 - Protecting and restoring forests and other natural areas improves water quality, provides habitat for endangered salmon, and reduces region's carbon footprint

28,000 acres of open space

- 
- Recreation provided in open space is through trailheads
 - Partner to ensure safe access and parking at trailheads
 - Parks Levy funding is supporting development of 11 trailheads.

Trailhead Access

- 
- A photograph of a paved trail with wooden posts. In the foreground, a person wearing a blue long-sleeved shirt, dark pants, and a white helmet is riding a road bike. In the background, two children are riding mountain bikes. The child on the left is wearing a blue shirt and a red helmet. The child on the right is wearing a blue shirt and a black helmet. The trail is bordered by wooden posts, some of which have red reflective lights. The background shows trees and a grassy area.
- 175 miles of regional trails
 - Dedicated to non-motorized transportation and recreation
 - Long-term vision is 300 miles

Regional Trails

- 
- A photograph of a gravel trail winding through a forest. In the foreground, a cyclist wearing a red shirt and a red helmet is riding towards the camera. In the background, another cyclist wearing a yellow vest is riding away. The trail is surrounded by lush green trees and grass.
- Connects Duvall to Snoqualmie Falls
 - Longest trail corridor - **31 Miles**

Snoqualmie Valley Trail



King County

PARKS

Your Big Backyard



Providing local parks

- Located in White Center
- Unincorporated urban area



Steve Cox Memorial Park

- Free recreational, educational and social enrichment programming
- 800 culturally diverse youth from White Center, aged 12 – 19 years old
- Youth participate in community service projects in park and throughout White Center community




White Center Teen Program

- Mel Olson Stadium – Seattle Prep
- PAL – Police Action League
- Kennedy High School and CDBG



Community Partnerships



**Local Provider of Parks
outside the UGA**

- Offer ballfields, picnic shelters, play structures, and community gathering spaces

Fall City Park

A photograph of a baseball team, the NW Honkers, walking across a dirt field. They are wearing green jerseys with "HONKERS" and their numbers on the back, white pants, and green caps. The background shows a line of trees under a clear sky.

Ballfield Partnerships

- King County Parks and Fall City Park District work to bring a semi-pro baseball league
- Snoqualmie Valley Little League is a long time user of the field and provides supplemental maintenance.

NW Honkers


- 
- A photograph of a person riding a brown horse in an outdoor arena. The rider is wearing a light-colored shirt and jeans, and the horse is wearing blue wraps on its lower legs. They are moving from left to right across a gravel surface. In the background, there is a wooden fence and a dense line of green trees.
- Serves the Raging River Riders, local and regional residents
 - Parking lot accommodates horse trailers

Equestrian arena

- Meeting the demand for parking for both river and trail access.




Snoqualmie Valley Trail Access

- 
- Partnership with Snoqualmie Tribe
 - Removing invasive plants and planting native plants along the river.

Restoration Partnership

- Partnership with Fall City Float to bring river recreation to Fall City

Fall City River Float


- 
- Members include; Department of Fish & Wildlife, Puget Sound Energy, Mountains to Sound, Fall City Parks District, Fall City Float, King County Solid Waste and King County Parks.
 - Work to address trash and use on the river

Fall City River Taskforce

- Timber at Tolt-MacDonald Park
- CHOMP! at Marymoor Park
- Fairwood50 at Petrovitsky Park



Community Events

A photograph of a dirt path winding through a dense forest. The path is made of brown earth and small stones, curving from the bottom center towards the right. The forest is filled with tall, slender trees with green foliage. In the foreground, there are large, green ferns and other undergrowth. The sky is visible through the canopy, showing a bright blue color with some white clouds. A semi-transparent grey box is overlaid on the top left of the image, containing white text.

King County Parks' mission is to steward, enhance and acquire parks to inspire healthy communities.

Our mission



Questions?