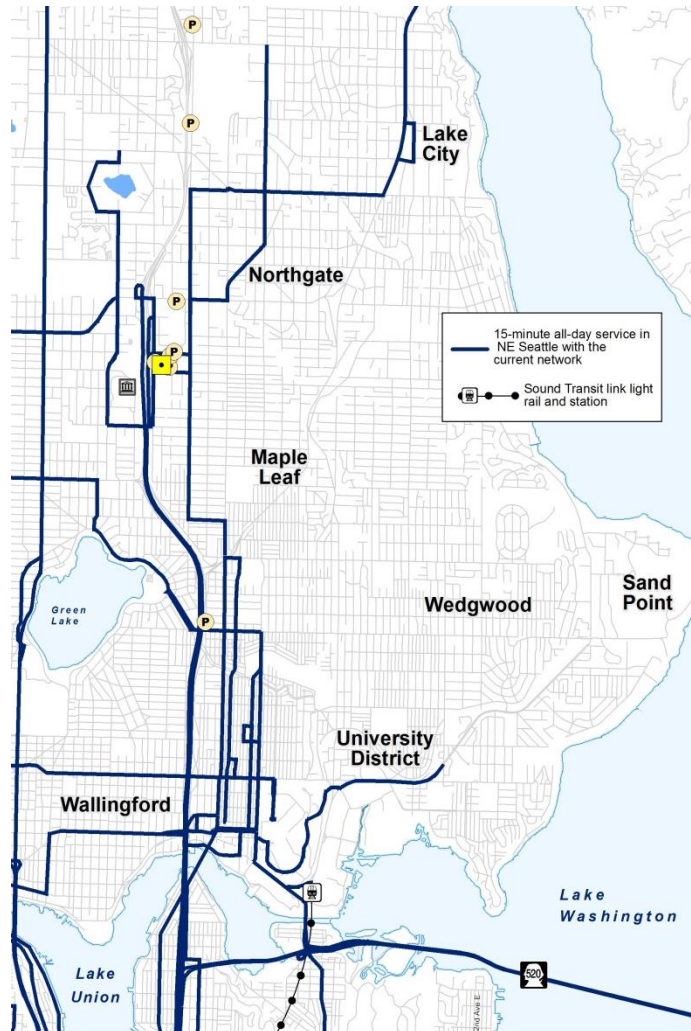


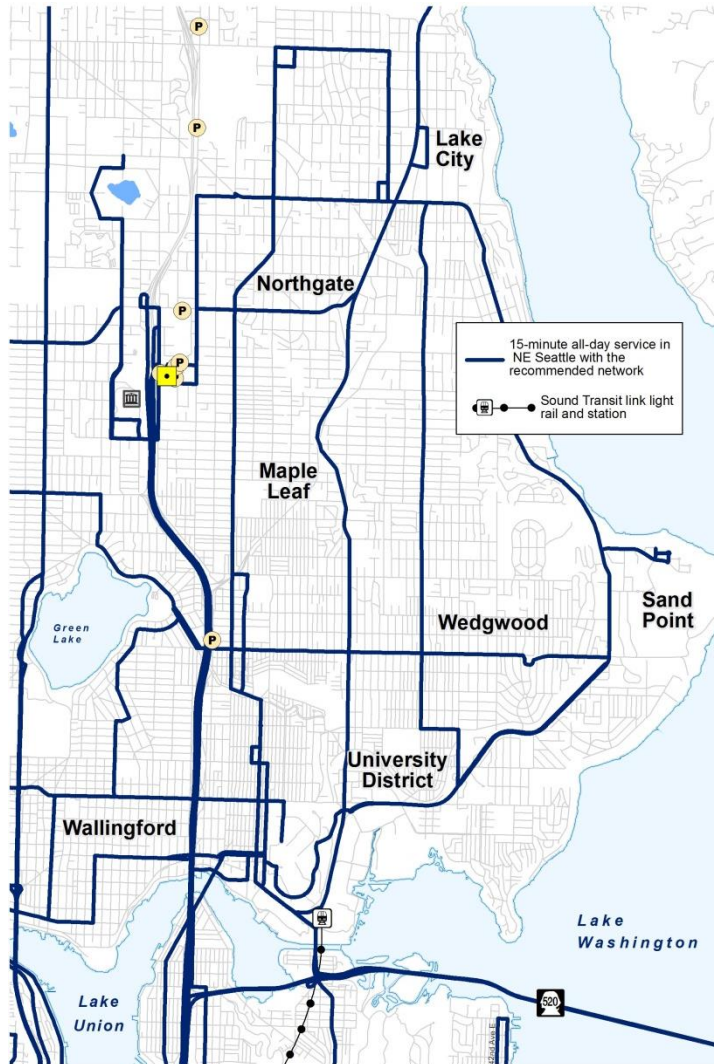
Frequency Improvements – NE Seattle



Households with access to
15 Minute Mid-day Service

- Current Network: 8,700

Frequency Improvements – NE Seattle

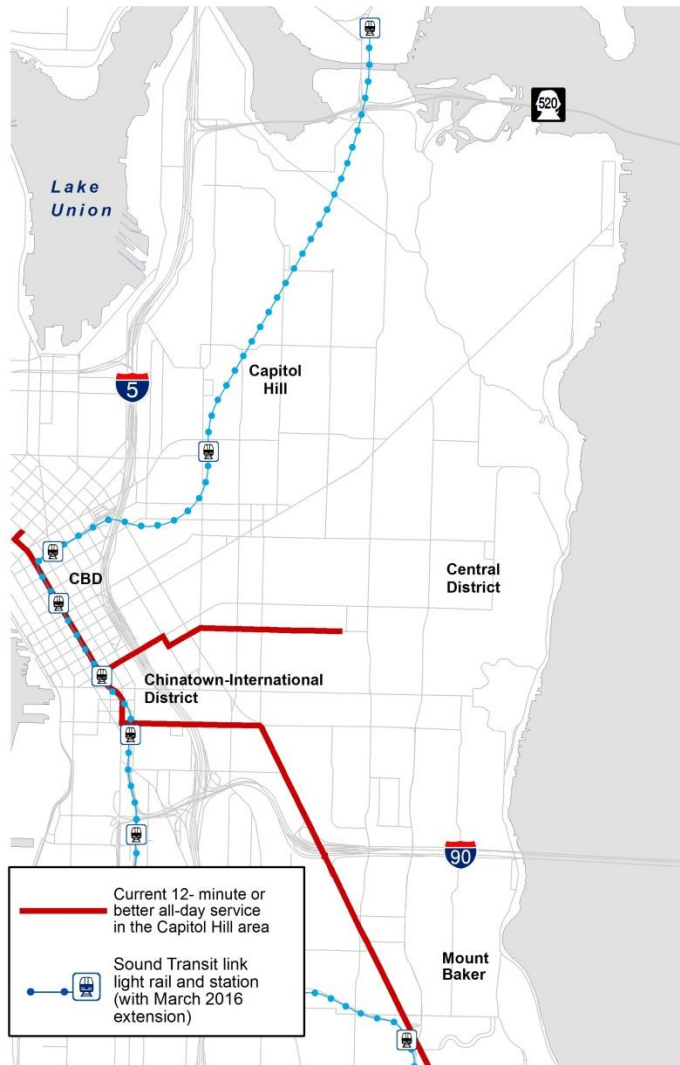


Households with access to
15 Minute Mid-day Service

- Current Network: 8,700
- **Proposed Network: 28,000**

Triples the number of households
with access to service every 15
minutes or better all-day

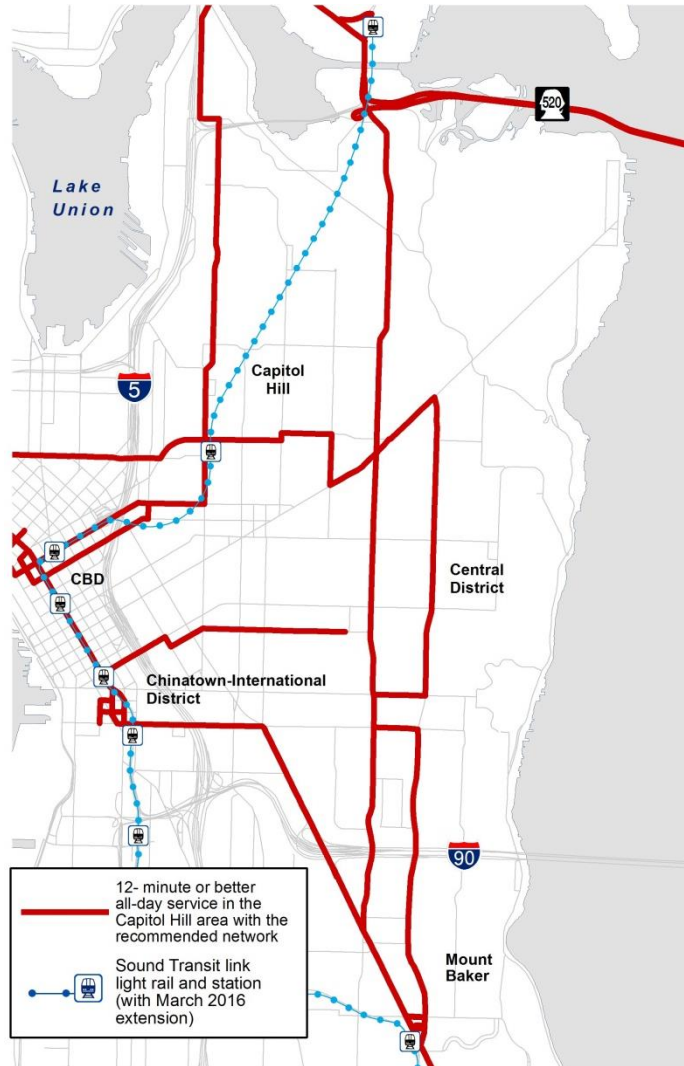
Frequency Improvements – Capitol Hill



Households with access to
12 Minute Mid-day Service

- Current Network: 15,600

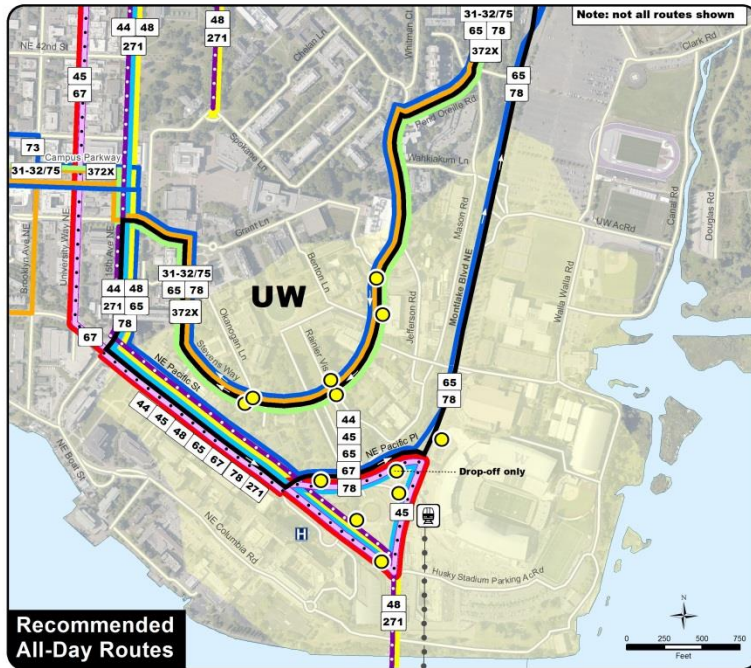
Frequency Improvements – Capitol Hill



Households with access to
12 Minute Mid-day Service

- Current Network: 15,600
- **Proposed Network: 40,000**

More than doubles the number of households with access to service every 12 minutes or better all-day



LEGEND

ALL-DAY ROUTES (route number)

- 31-32/75 (through-routed)
- 73/78 (through-routed)
- 44
- 45
- 48
- 65
- 67
- 271
- 372X

PEAK-ONLY ROUTES (route number)

- 167
- 197
- 277
- 373X
- ST 540X
- ST 541X/542X
- ST 556X

Planned bus stop locations

Sound Transit link light rail & station

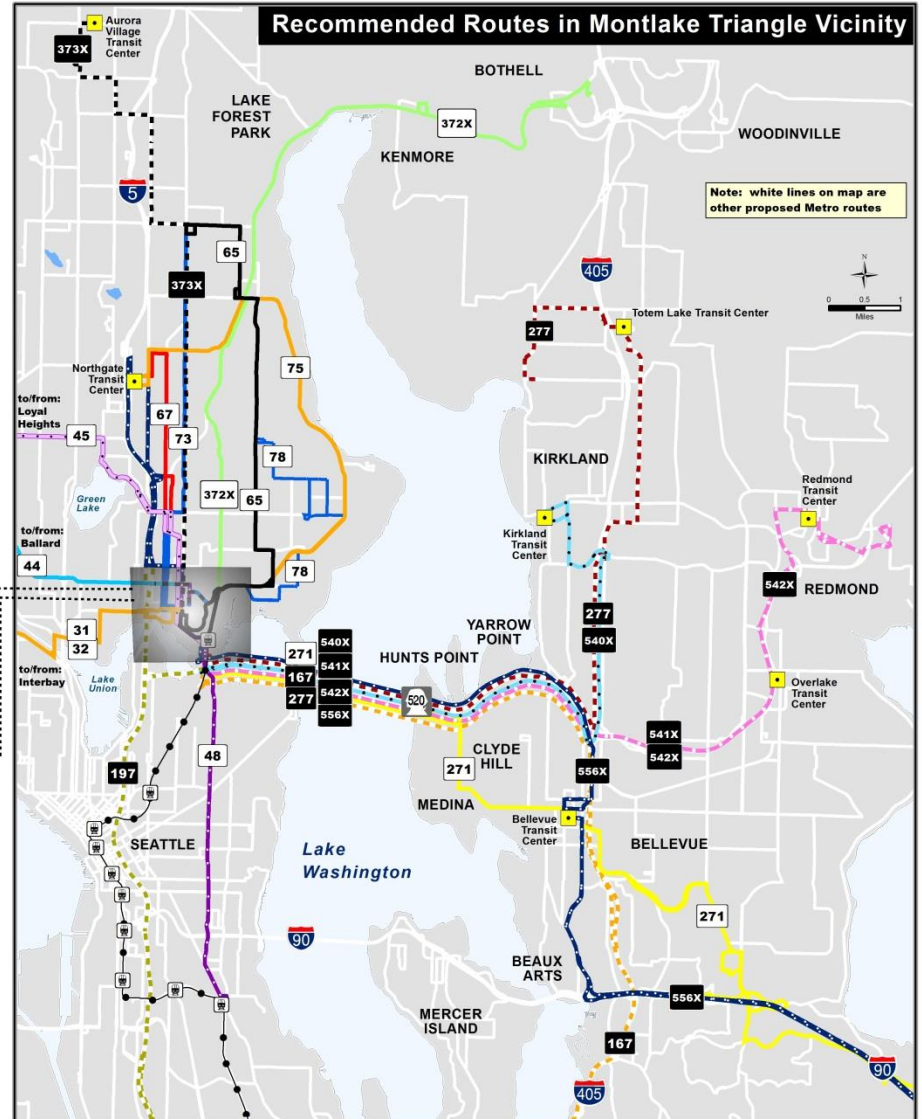
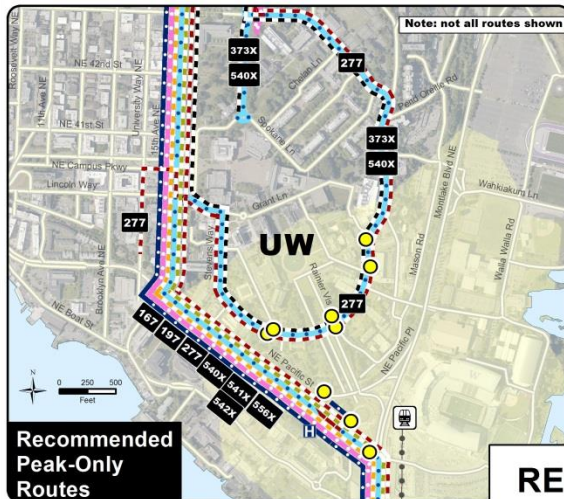
1/2 mile walk from station

Transit Center

The information included on this map has been compiled by King County staff from a variety of sources and is subject to change without notice. King County makes no representations or warranties, express or implied, as to accuracy, completeness, timeliness, or rights to the use of such information. Its use is not intended for use as a survey product. King County shall not be liable for any general, special, indirect, incidental, or consequential damages including, but not limited to, lost revenues or lost profits resulting from the use or misuse of the information contained on this map. Any sale of this map or information on this map is prohibited except by written permission of King County.

CF: RecommendedTriangleRts August 22, 2015

King County



RECOMMENDED MONTLAKE TRIANGLE VICINITY ROUTES

RECOMMENDED CAPITOL HILL STATION VICINITY ROUTES

LEGEND

Metro All-Day Routes*

- Route 2
- Route 8
- Route 9X
- Route 10
- Route 11
- Route 12
- Route 47
- Route 49
- Route 60

First Hill Streetcar

Bus stops

Sound Transit link light rail and station

University of Washington and Capitol Hill link stations

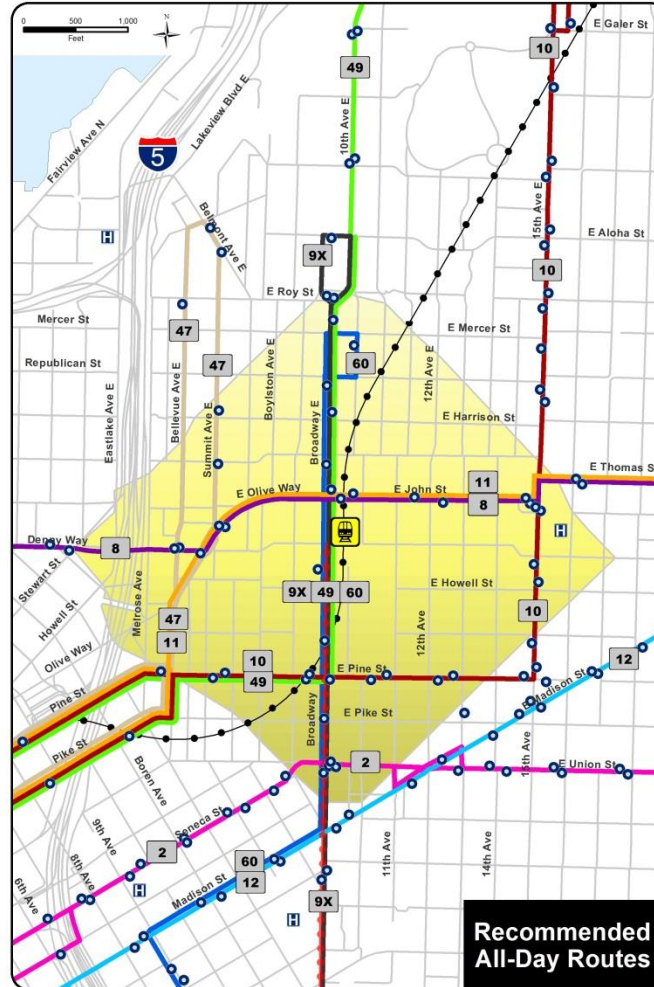
1/2 mile walk from station

*Not all routes are shown

The information included on this map has been compiled by King County staff from a variety of sources and is subject to change without notice. King County makes no representations or warranties, express or implied, as to accuracy, completeness, timeliness, or rights to the use of such information. This document is not intended for use as a survey product. King County shall not be liable for any general, special, indirect, incidental, or consequential damages including, but not limited to, lost revenues or lost profits resulting from the use or misuse of the information contained on this map. Any sale of this map or information on this map is prohibited except by written permission of King County.

CF: Recommended_CapitolStationRts
August 24, 2015

King County



Recommended All-Day Routes

Recommended Routes in Capitol Hill Station Vicinity



Note: white lines on map are other proposed Metro routes