

**Map Amendment A**

**6/23/14**

Rainier Ridge Four-to-One Proposal (south of the intersection of SE 288<sup>th</sup> Street and 238<sup>th</sup> Ave SE).

1  
2  
3  
4  
5  
6  
7  
8  
9  
10  
11  
12  
13  
14  
15  
16  
17  
18  
19  
20  
21  
22  
23  
24  
25  
26  
27  
28  
29  
30  
31  
32  
33  
34  
35  
36

AMENDMENT TO THE KING COUNTY COMPREHENSIVE PLAN LAND USE MAP

---

Redesignate a 14-acre portion of the northwest portion of the follow parcel from Rural Area (RA) to Rural Cities Urban Growth Area (RX), as shown on attached Map 1:

153100-0010

Effect: Extends the Urban Growth Area to include a 14 acre portion of the northwest portion of the above 70-acre parcel and applies a Rural Cities Urban Growth Area land use designation, and includes Map 2 depicting the dedicated open space for reference.

# Rainier Ridge UGA Expansion and Redesignation Map

## Executive Recommended Comprehensive Plan Land Use



The information included on this map has been compiled by King County staff from a variety of sources and is subject to change without notice. King County makes no representations of warranty, express or implied, as to accuracy, completeness, timeliness, or rights to the use of such information. This document is not intended for use as a survey product. King County shall not be liable for any general, special, indirect, incidental, or consequential damages including, but not limited to, lost revenues or lost profits resulting from the use or misuse of the information contained on this map. Any sale of this map or information on this map is prohibited except by written permission of King County.

Date: March 6, 2014

W:\gis\1\Projects\lides\2014\_CompPlan\projects\RainierRidge\_rec\_lubw.mxd  
W:\gis\1\Projects\lides\2014\_CompPlan\projects\RainierRidge\_rec\_lubw.pdf  
MCCOMBSP

- RX Rural Cities Urban Growth Area
- ra Rural Area
- UM Urban Res., Medium (4-12du/acre)



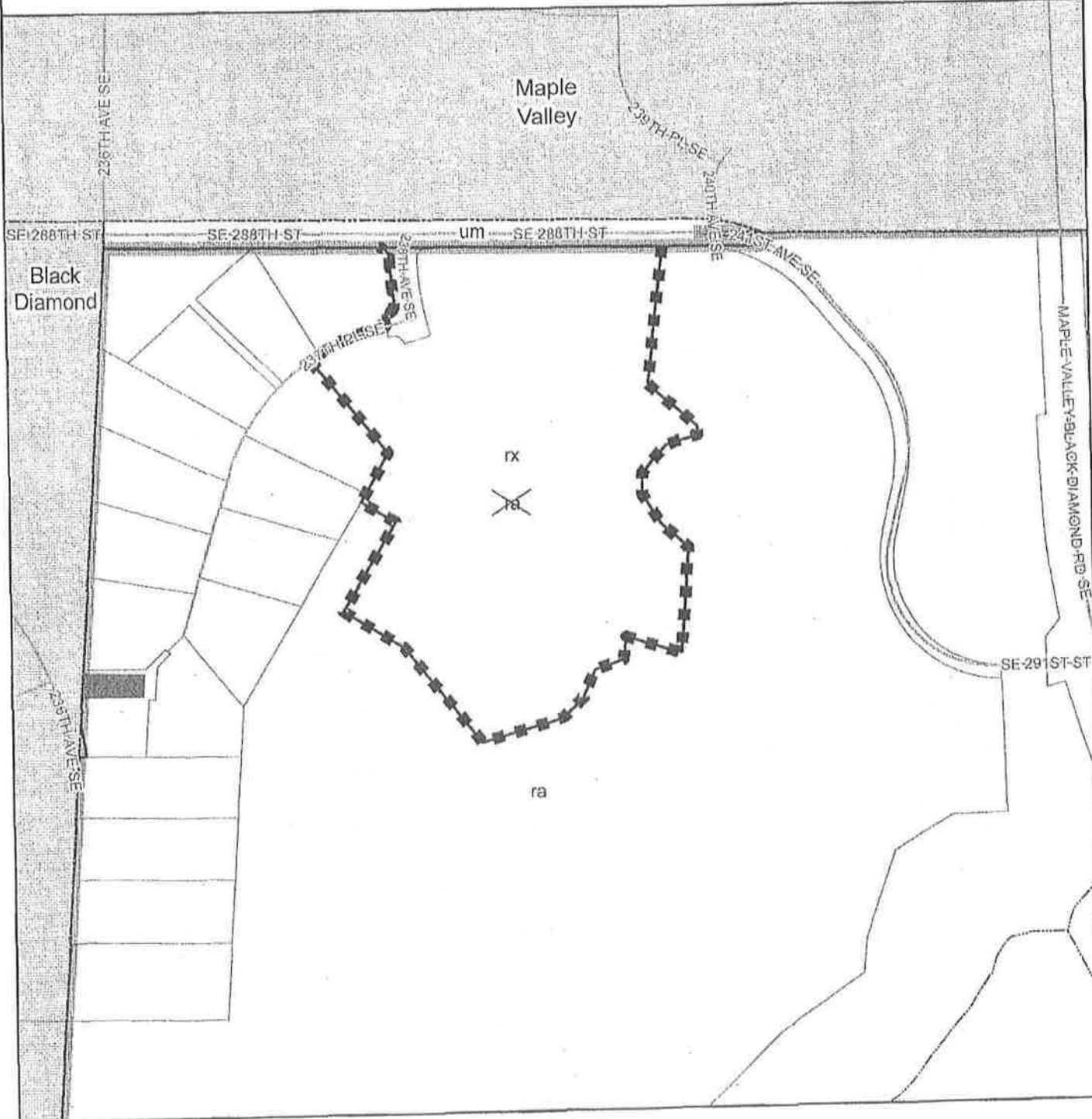
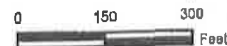
Incorporated Areas



Urban Growth Boundary



Proposed Urban Growth Boundary



# Rainier Ridge UGA Expansion and Redesignation Map



## Executive Recommended Comprehensive Plan Land Use

The information included on this map has been compiled by King County staff from a variety of sources and is subject to change without notice. King County makes no representations or warranties, express or implied, as to accuracy, completeness, timeliness, or rights to the use of such information. This document is not intended for use as a survey product. King County shall not be liable for any general, special, indirect, incidental, or consequential damages including, but not limited to, lost revenues or lost profits resulting from the use or misuse of the information contained on this map. Any sale of this map or information on this map is prohibited except by written permission of King County.

Date: May 22, 2014  
 \\gisnas1\Projects\ddes\2014\_CompPlan\projects\RainierRidge\_os\_locator.mxd  
 \\gisnas1\Projects\ddes\2014\_CompPlan\projects\RainierRidge\_os\_locator.pdf  
 MCCOMBSP

- |   |                            |   |                       |
|---|----------------------------|---|-----------------------|
|  | Recommended PAA            |  | Urban Growth Boundary |
|  | Recommended Open Space     |  | Incorporated Areas    |
|  | Existing King County Parks |  | Existing PAA          |

