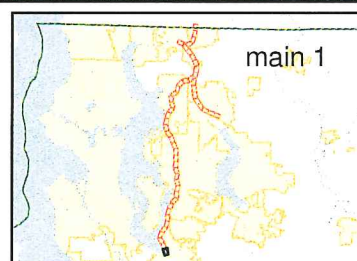


Eastside Rail Corridor Map 1

The information included on this map has been compiled by King County staff from a variety of sources and is subject to change without notice. King County makes no representations or warranties, express or implied, as to accuracy, completeness, timeliness, or rights to the use of such information. King County shall not be liable for any general, special, indirect, incidental, or consequential damages including, but not limited to, lost revenues or lost profits resulting from the use or misuse of the information contained on this map. Any sale of this map or information on this map is prohibited except by written permission of King County.

- BNSF Corridor
- Adjacent Parcels
- Parks

Air Photography 2002 USGS



King County
Department of
Natural Resources and Parks
Parks and Recreation Division

March 26, 2006

0 75 150 300 Feet



slopes at N 29th St



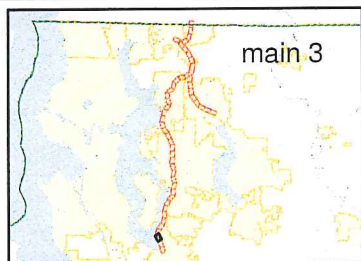
Eastside Rail Corridor



Map 3

The information included on this map has been compiled by King County staff from a variety of sources and is subject to change without notice. King County makes no representations or warranties, express or implied, as to accuracy, completeness, timeliness, or rights to the use of such information. King County shall not be liable for any general, special, indirect, incidental, or consequential damages including, but not limited to, lost revenues or lost profits resulting from the use or misuse of the information contained on this map. Any sale of this map or information on this map is prohibited except by written permission of King County.


-  BNSF Corridor
-  Adjacent Parcels
-  Parks

Air Photography 2002 USGS





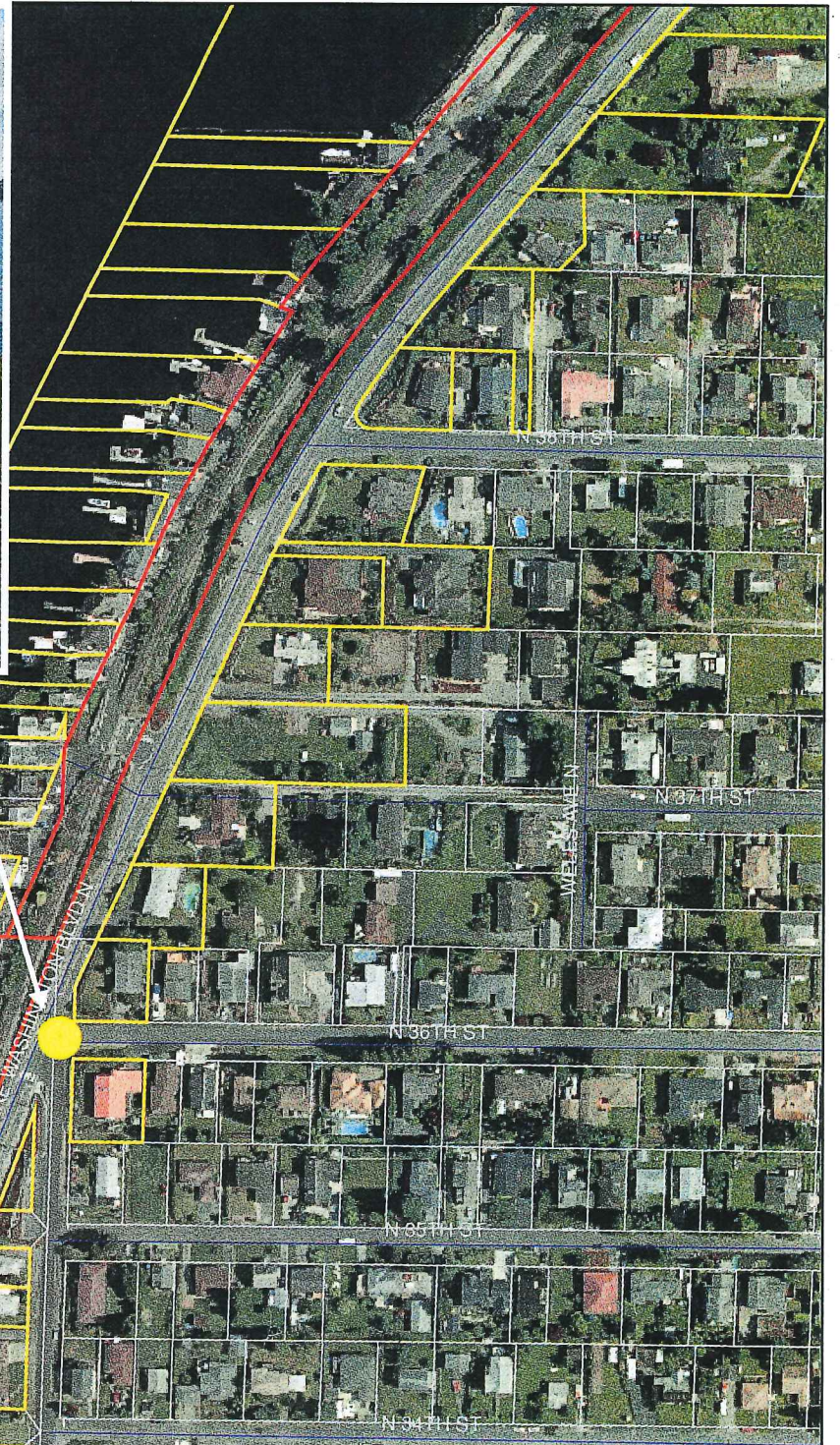
King County
Department of
Natural Resources and Parks
Parks and Recreation Division
March 28, 2006



0 75 150 300 Feet



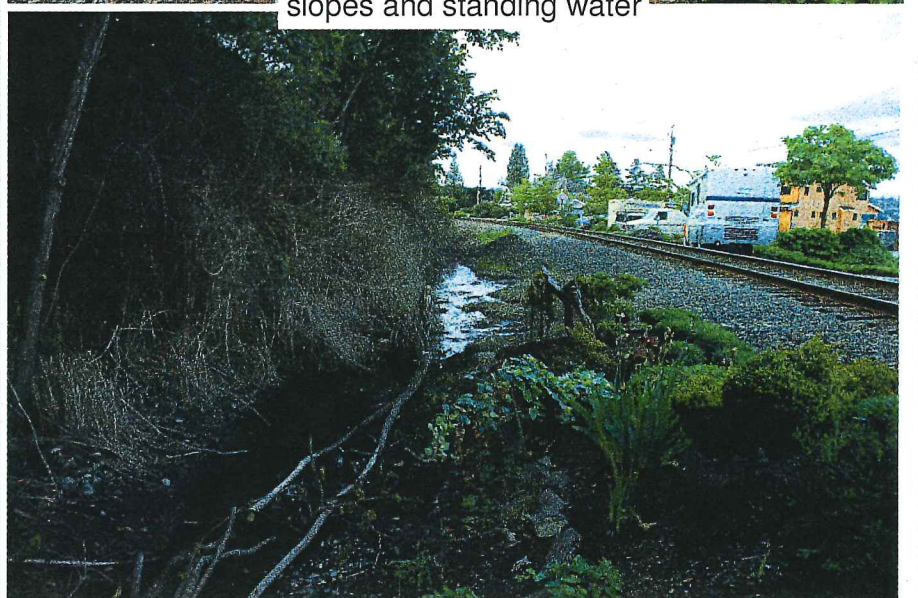
slopes and narrow corridor at N 36th St



corridor narrows to between 10 feet and 35 feet (approx.) from N 33rd St to N 35th St



slopes and standing water



Eastside Rail Corridor

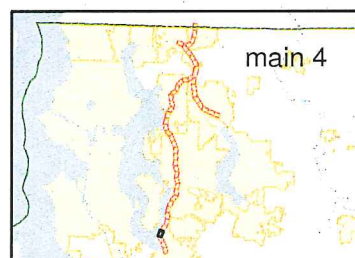
Map 4

The information included on this map has been compiled by King County staff from a variety of sources and is subject to change without notice. King County makes no representations or warranties, express or implied, as to accuracy, completeness, timeliness, or rights to the use of such information. King County shall not be liable for any general, special, indirect, incidental, or consequential damages including, but not limited to, lost revenues or lost profits resulting from the use or misuse of the information contained on this map. Any sale of this map or information on this map is prohibited except by written permission of King County.

CL:\dhrp1\projects\Parks\working\projects\site_projects\BNSF\apps\corridor_orthos.mxd

- BNSF Corridor
- Adjacent Parcels
- Parks

Air Photography 2002 USGS



King County
Department of
Natural Resources and Parks
Parks and Recreation Division

March 28, 2006

0 75 150 300 Feet



Eastside Rail Corridor

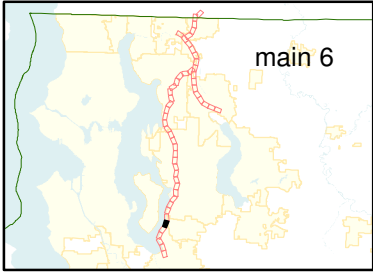
Map 6


The information included on this map has been compiled by King County staff from a variety of sources and is subject to change without notice. King County makes no representations or warranties, express or implied, as to accuracy, completeness, timeliness, or rights to the use of such information. King County shall not be liable for any general, special, indirect, incidental, or consequential damages including, but not limited to, lost revenues or lost profits resulting from the use or misuse of the information contained on this map. Any sale of this map or information on this map is prohibited except by written permission of King County.

CL:\dnrp1\projects\Parks\working\projects\site_projects\BNSF\apps\corridor_orthos_pics.mxd

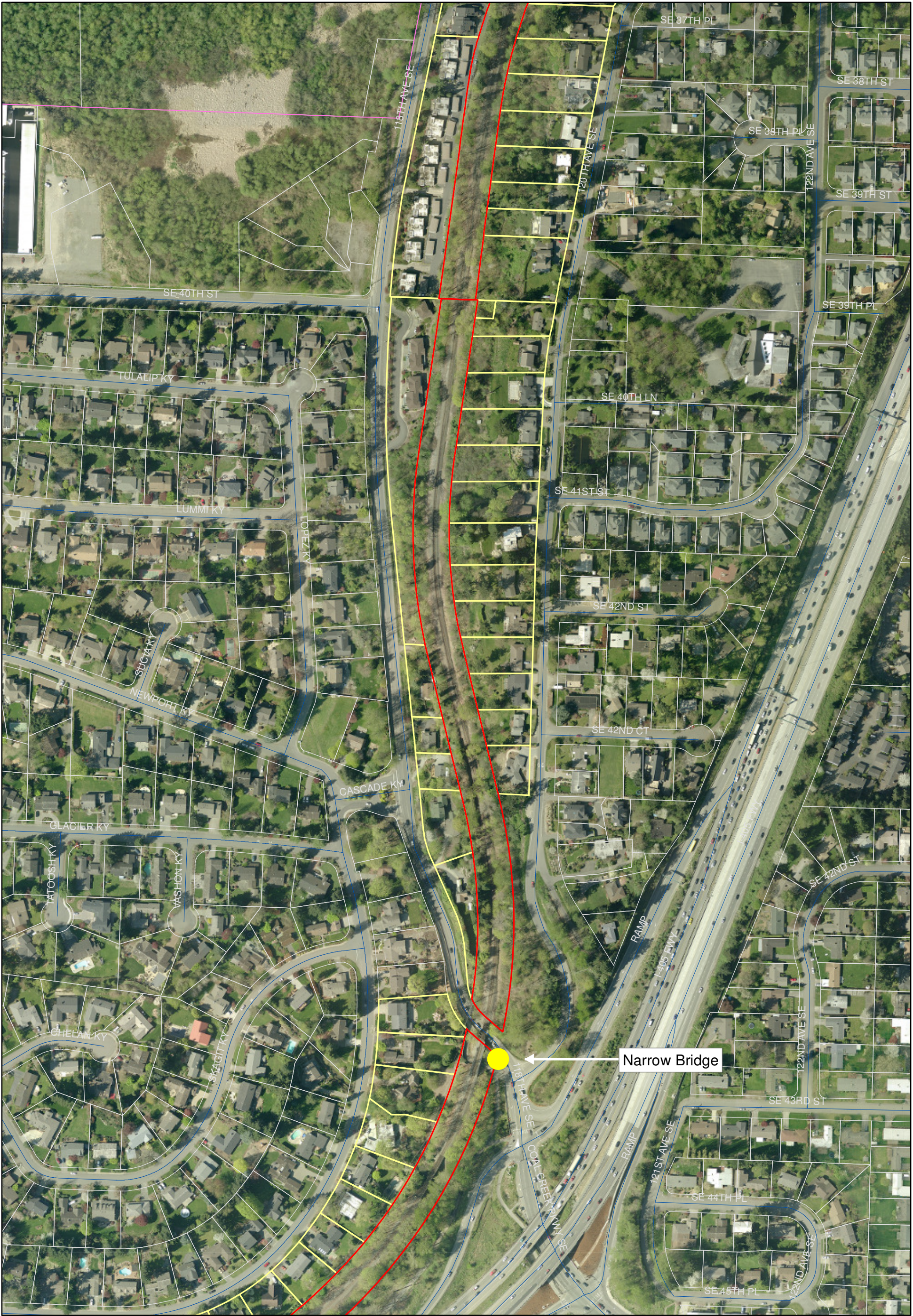
-  BNSF Corridor
-  Adjacent Parcels
-  Parks

Air Photography 2009



 **King County**
Department of
Natural Resources and Parks
Parks Division
November 7, 2012

0 75 150 300 Feet



Eastside Rail Corridor

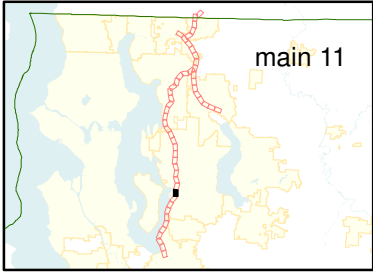
Map 11

The information included on this map has been compiled by King County staff from a variety of sources and is subject to change without notice. King County makes no representations or warranties, express or implied, as to accuracy, completeness, timeliness, or rights to the use of such information. King County shall not be liable for any general, special, indirect, incidental, or consequential damages including, but not limited to, lost revenues or lost profits resulting from the use or misuse of the information contained on this map. Any sale of this map or information on this map is prohibited except by written permission of King County.

CL:\dnrp1\projects\Parks\working\projects\site_projects\BNSF\apps\corridor_orthos_pics.mxd

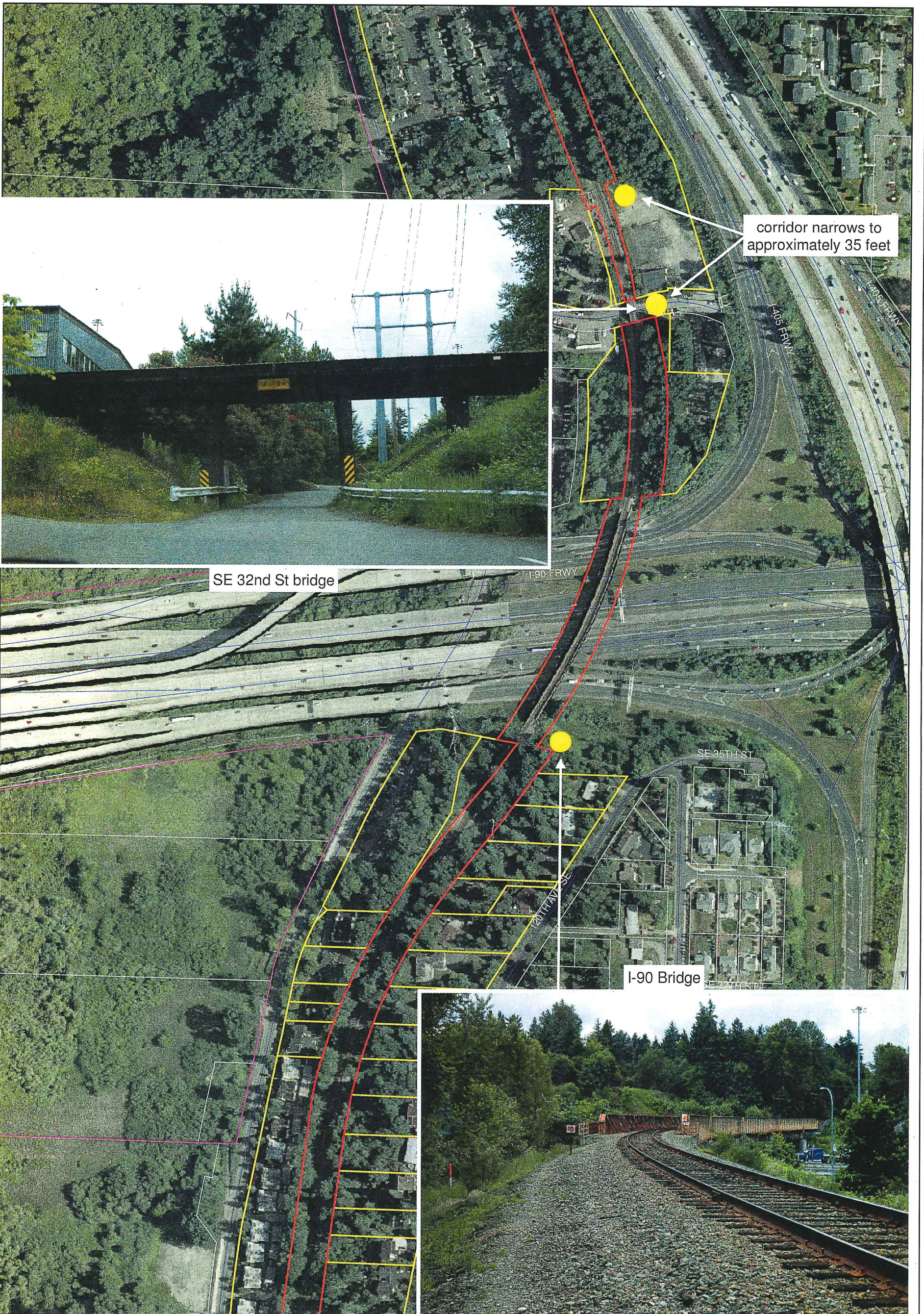
- BNSF Corridor
- Adjacent Parcels
- Parks

Air Photography 2009



King County
Department of
Natural Resources and Parks
Parks Division
November 7, 2012

0 75 150 300 Feet



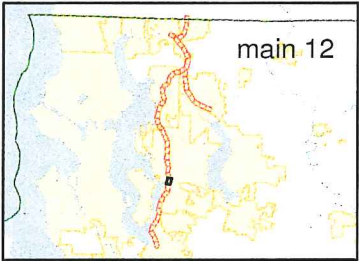
Eastside Rail Corridor **Map 12**

The information included on this map has been compiled by King County staff from a variety of sources and is subject to change without notice. King County makes no representations or warranties, express or implied, as to accuracy, completeness, timeliness, or rights to the use of such information. King County shall not be liable for any general, special, indirect, incidental, or consequential damages including, but not limited to, lost revenues or lost profits resulting from the use or misuse of the information contained on this map. Any sale of this map or information on this map is prohibited except by written permission of King County.

CL:\dnr\1\projects\Parks\working\projects\site_projects\BNSF\apps\corridor_orthos.mxd

- BNSF Corridor
- Adjacent Parcels
- Parks

Air Photography 2002 USGS



N

King County
 Department of
 Natural Resources and Parks
Parks and Recreation Division

March 28, 2006



Eastside Rail Corridor

Map 13

The information included on this map has been compiled by King County staff from a variety of sources and is subject to change without notice. King County makes no representations or warranties, express or implied, as to accuracy, completeness, timeliness, or rights to the use of such information. King County shall not be liable for any general, special, indirect, incidental, or consequential damages including, but not limited to, lost revenues or lost profits resulting from the use or misuse of the information contained on this map. Any sale of this map or information on this map is prohibited except by written permission of King County.

CL:\dnrp1\projects\Parks\working\projects\site_projects\BNSF\apps\corridor_orthos_pics.mxd

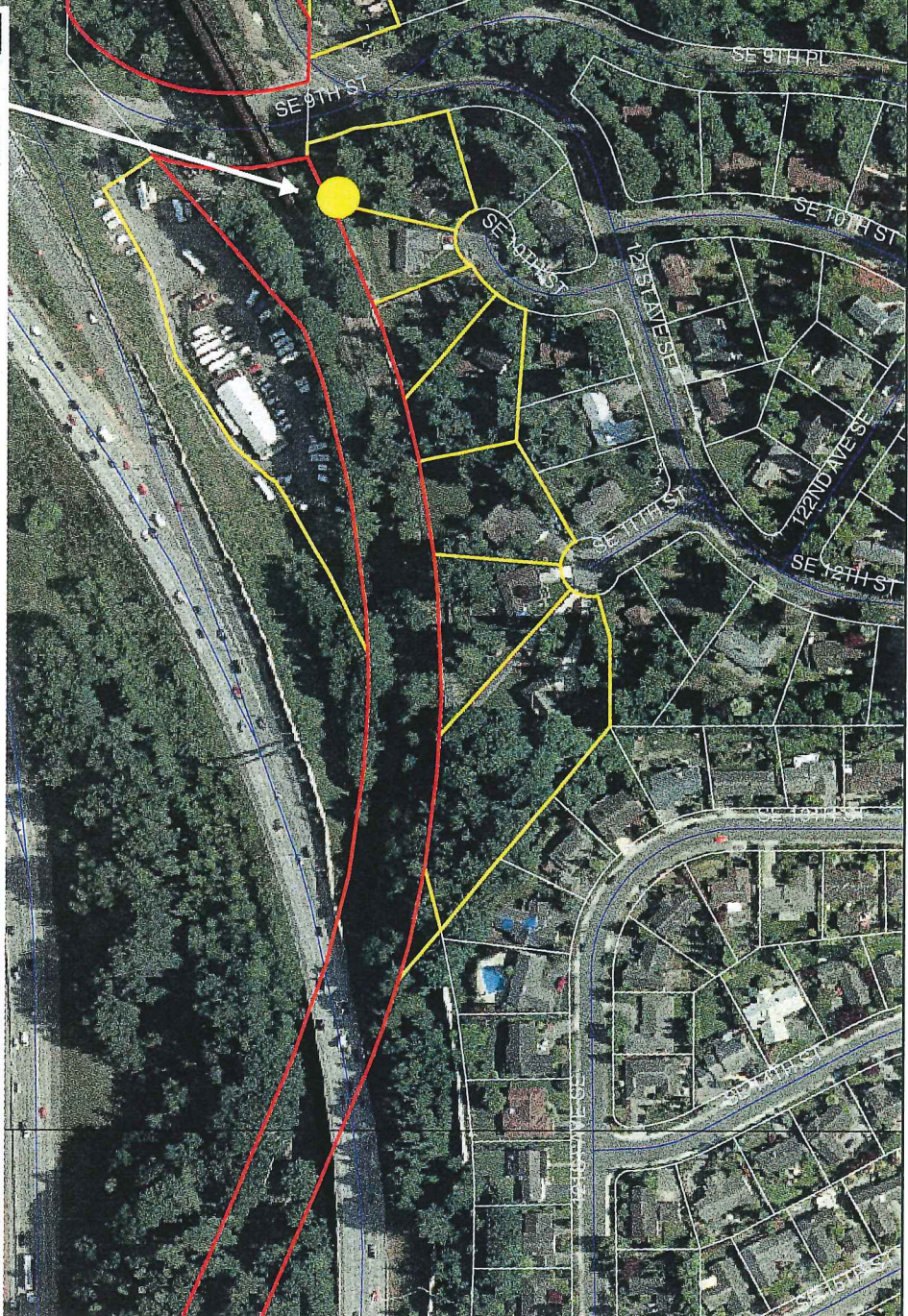
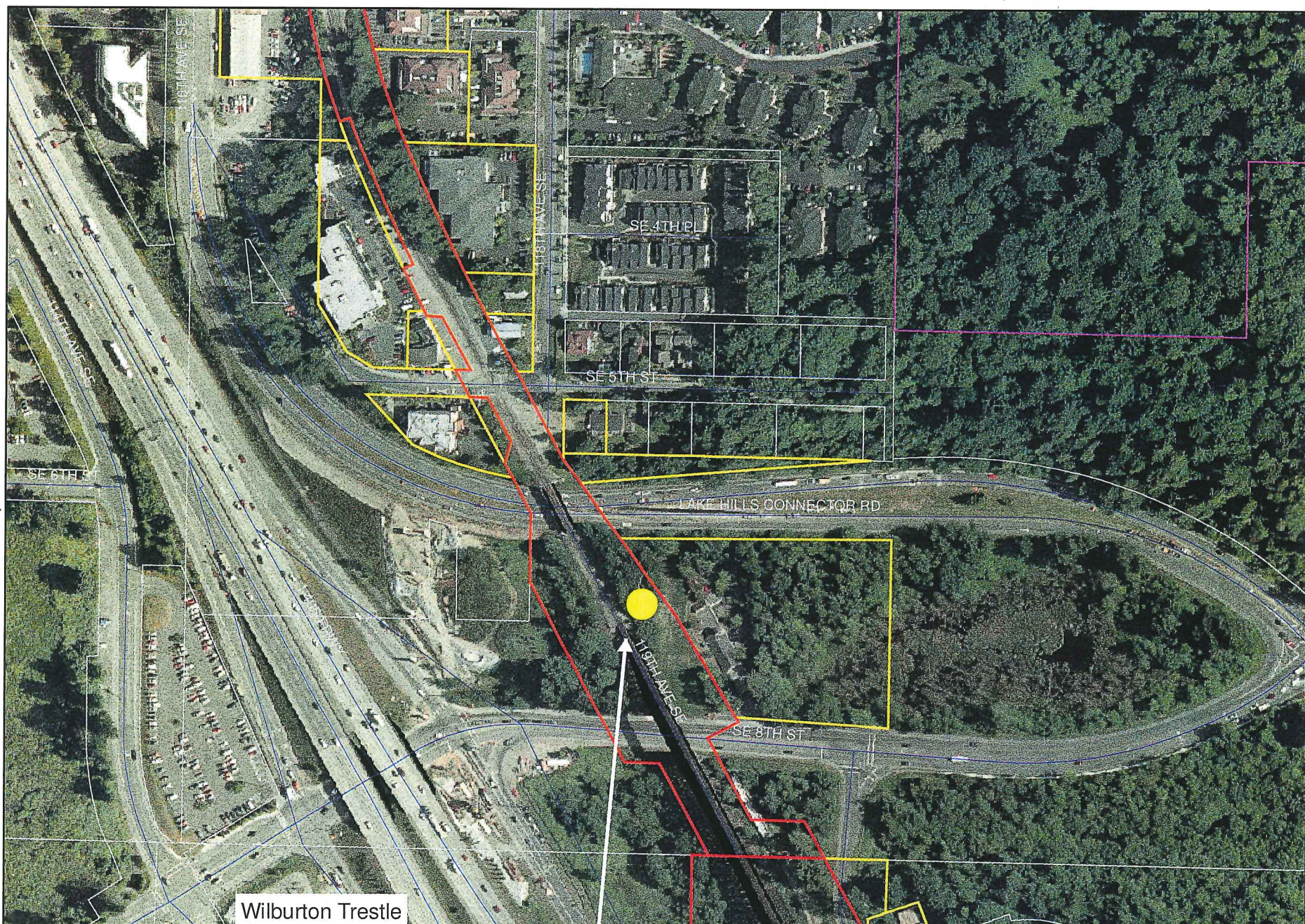
- BNSF Corridor
- Adjacent Parcels
- Parks

Air Photography 2009



King County
Department of
Natural Resources and Parks
Parks Division
November 7, 2012

0 75 150 300 Feet



Eastside Rail Corridor

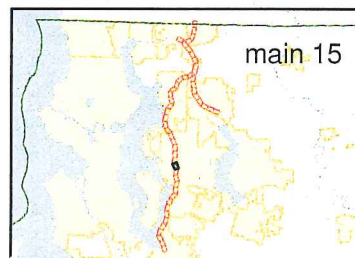
Map 15

The information included on this map has been compiled by King County staff from a variety of sources and is subject to change without notice. King County makes no representations or warranties, express or implied, as to accuracy, completeness, timeliness, or rights to the use of such information. King County shall not be liable for any general, special, indirect, incidental, or consequential damages including, but not limited to, lost revenues or lost profits resulting from the use or misuse of the information contained on this map. Any sale of this map or information on this map is prohibited except by written permission of King County.

CL:\dnrp1\projects\Parks\working\projects\alte_projects\BNSFapps\corridor_orthos.mxd

- BNSF Corridor
- Adjacent Parcels
- Parks

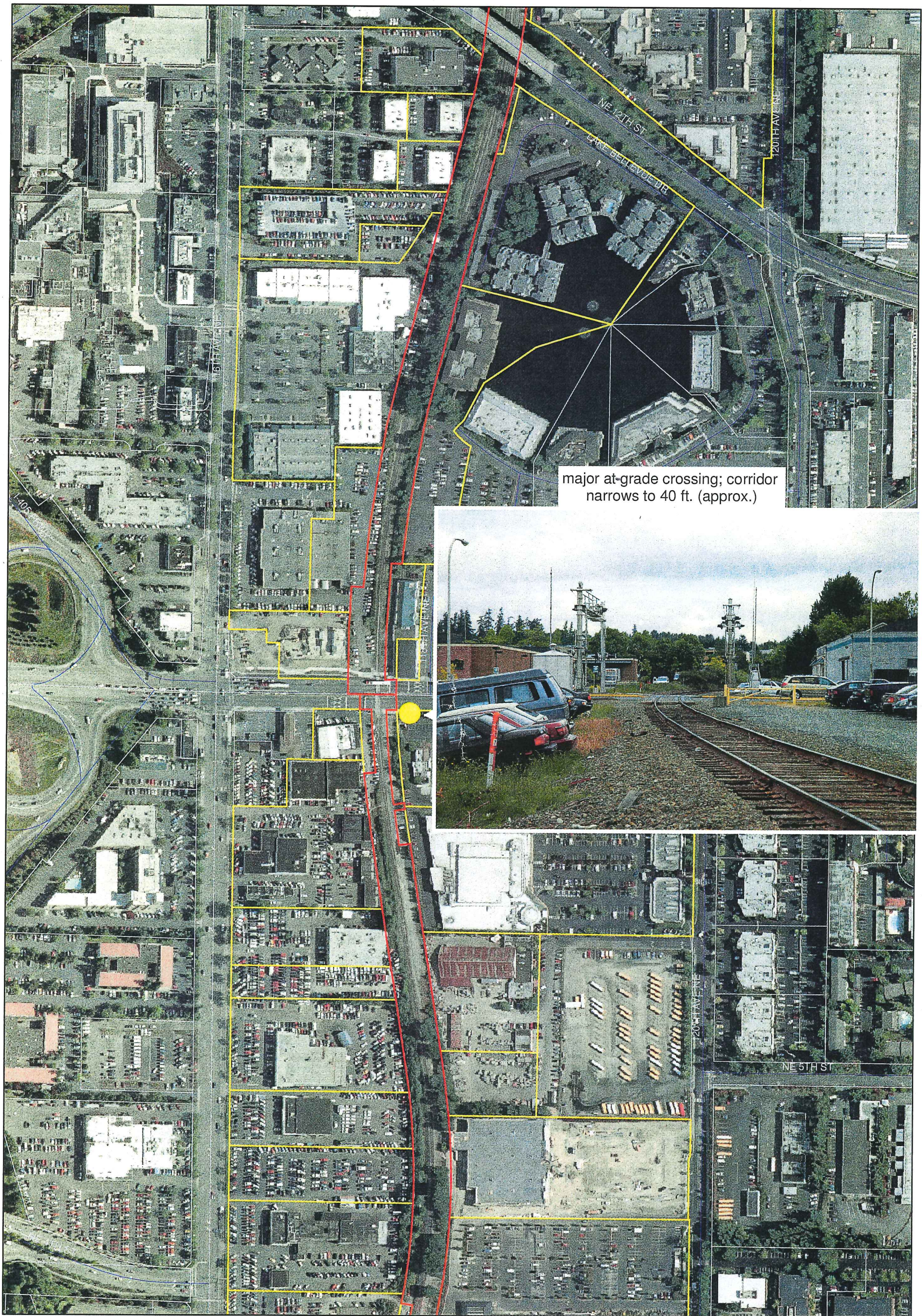
Air Photography 2002 USGS



King County
Department of
Natural Resources and Parks
Parks and Recreation Division

March 28, 2006

0 75 150 300 Feet



major at-grade crossing; corridor narrows to 40 ft. (approx.)

Eastside Rail Corridor

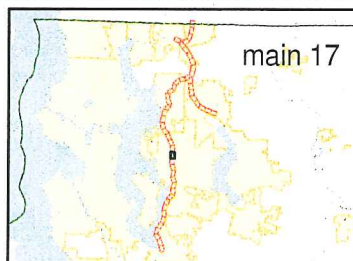
Map 17

The information included on this map has been compiled by King County staff from a variety of sources and is subject to change without notice. King County makes no representations or warranties, express or implied, as to accuracy, completeness, timeliness, or rights to the use of such information. King County shall not be liable for any general, special, indirect, incidental, or consequential damages including, but not limited to, lost revenues or lost profits resulting from the use or misuse of the information contained on this map. Any sale of this map or information on this map is prohibited except by written permission of King County.

CL:\dnr\p1\projects\Parks\working\projects\site_projects\BNSF\apps\corridor_ortho.mxd

- BNSF Corridor
- Adjacent Parcels
- Parks

Air Photography 2002 USGS



King County
Department of
Natural Resources and Parks
Parks and Recreation Division

March 28, 2006

0 75 150 300 Feet



Eastside Rail Corridor

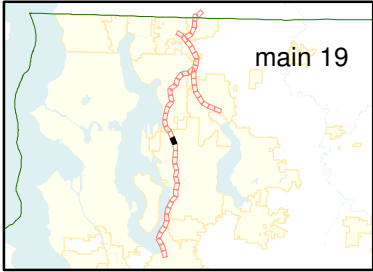
Map 19

The information included on this map has been compiled by King County staff from a variety of sources and is subject to change without notice. King County makes no representations or warranties, express or implied, as to accuracy, completeness, timeliness, or rights to the use of such information. King County shall not be liable for any general, special, indirect, incidental, or consequential damages including, but not limited to, lost revenues or lost profits resulting from the use or misuse of the information contained on this map. Any sale of this map or information on this map is prohibited except by written permission of King County.

CL:\dnrp1\projects\Parks\working\projects\site_projects\BNSF\apps\corridor_orthos_pics.mxd

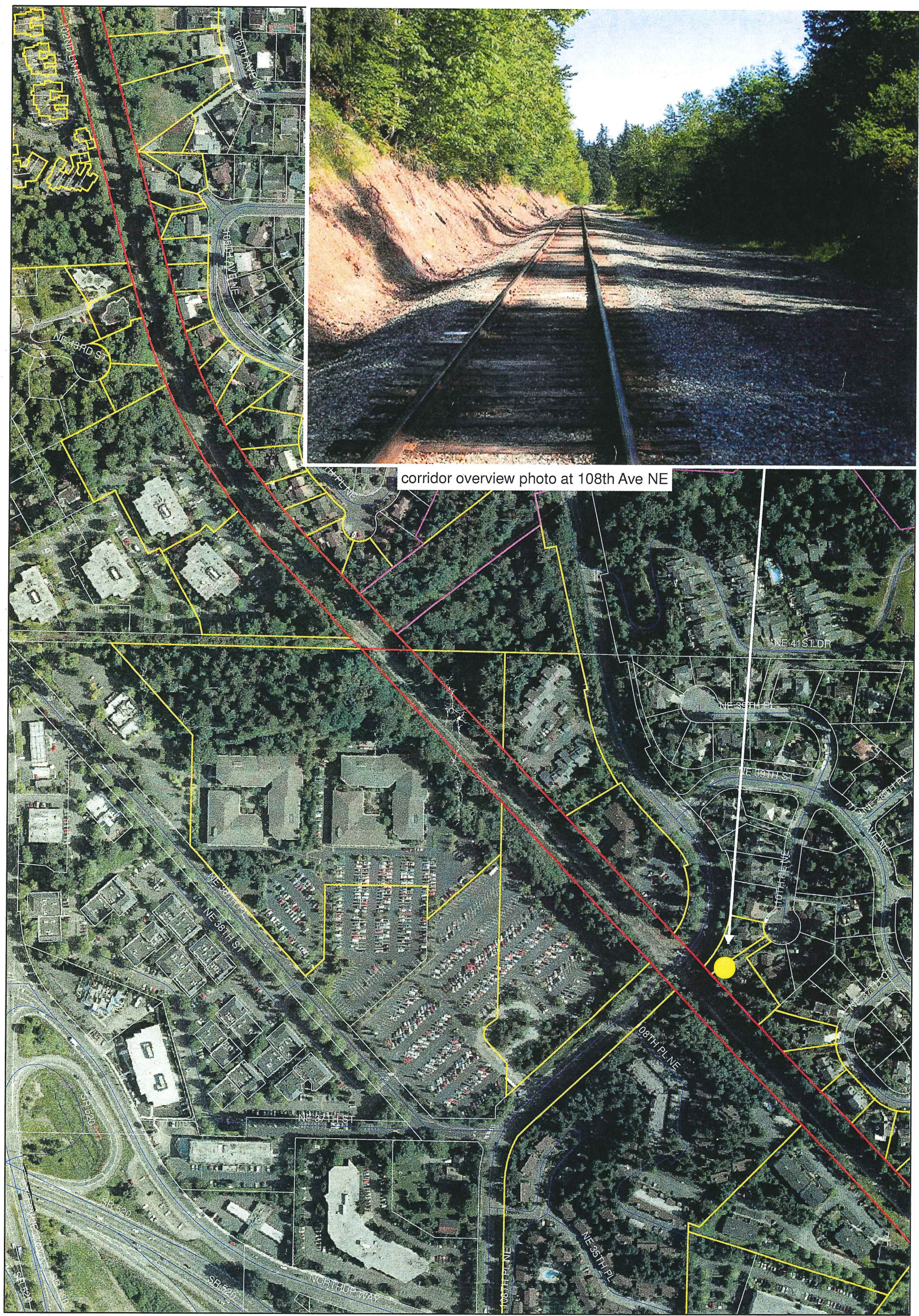
- BNSF Corridor
- Adjacent Parcels
- Parks

Air Photography 2009



King County
Department of
Natural Resources and Parks
Parks Division
November 7, 2012

0 75 150 300 Feet



corridor overview photo at 108th Ave NE

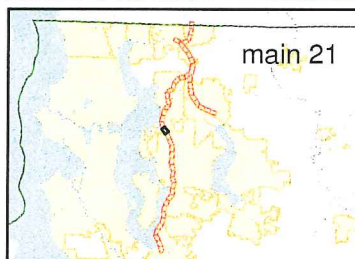
Eastside Rail Corridor Map 21

The information included on this map has been compiled by King County staff from a variety of sources and is subject to change without notice. King County makes no representations or warranties, express or implied, as to accuracy, completeness, timeliness, or rights to the use of such information. King County shall not be liable for any general, special, indirect, incidental, or consequential damages including, but not limited to, lost revenues or lost profits resulting from the use or misuse of the information contained on this map. Any sale of this map or information on this map is prohibited except by written permission of King County.

CL:\dnrpt\projects\Parks\working\projects\site_projects\BNSFapps\corridor_orthos.mxd

- BNSF Corridor
- Adjacent Parcels
- Parks

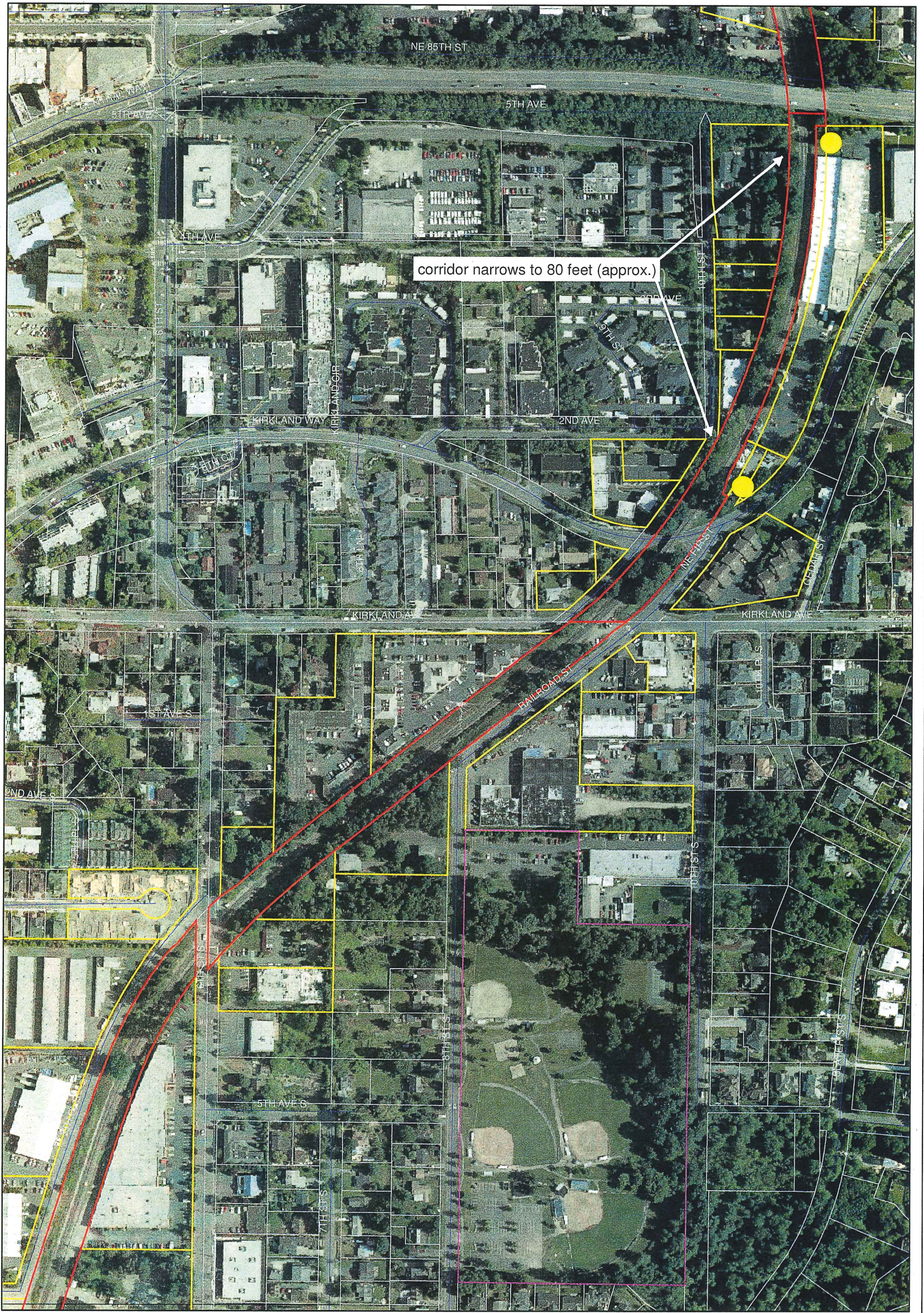
Air Photography 2002 USGS



King County
Department of
Natural Resources and Parks
Parks and Recreation Division

March 28, 2006





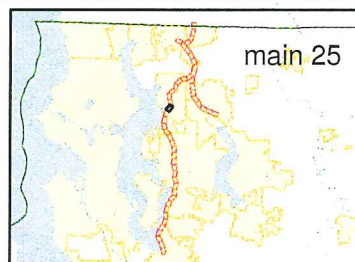
Eastside Rail Corridor Map 25

The information included on this map has been compiled by King County staff from a variety of sources and is subject to change without notice. King County makes no representations or warranties, express or implied, as to accuracy, completeness, timeliness, or rights to the use of such information. King County shall not be liable for any general, special, indirect, incidental, or consequential damages including, but not limited to, lost revenues or lost profits resulting from the use or misuse of the information contained on this map. Any sale of this map or information on this map is prohibited except by written permission of King County.

CL:\dnr\p\projects\Parks\working\projects\site_projects\BNSFapps\corridor_orthos.mxd

- BNSF Corridor
- Adjacent Parcels
- Parks

Air Photography 2002 USGS



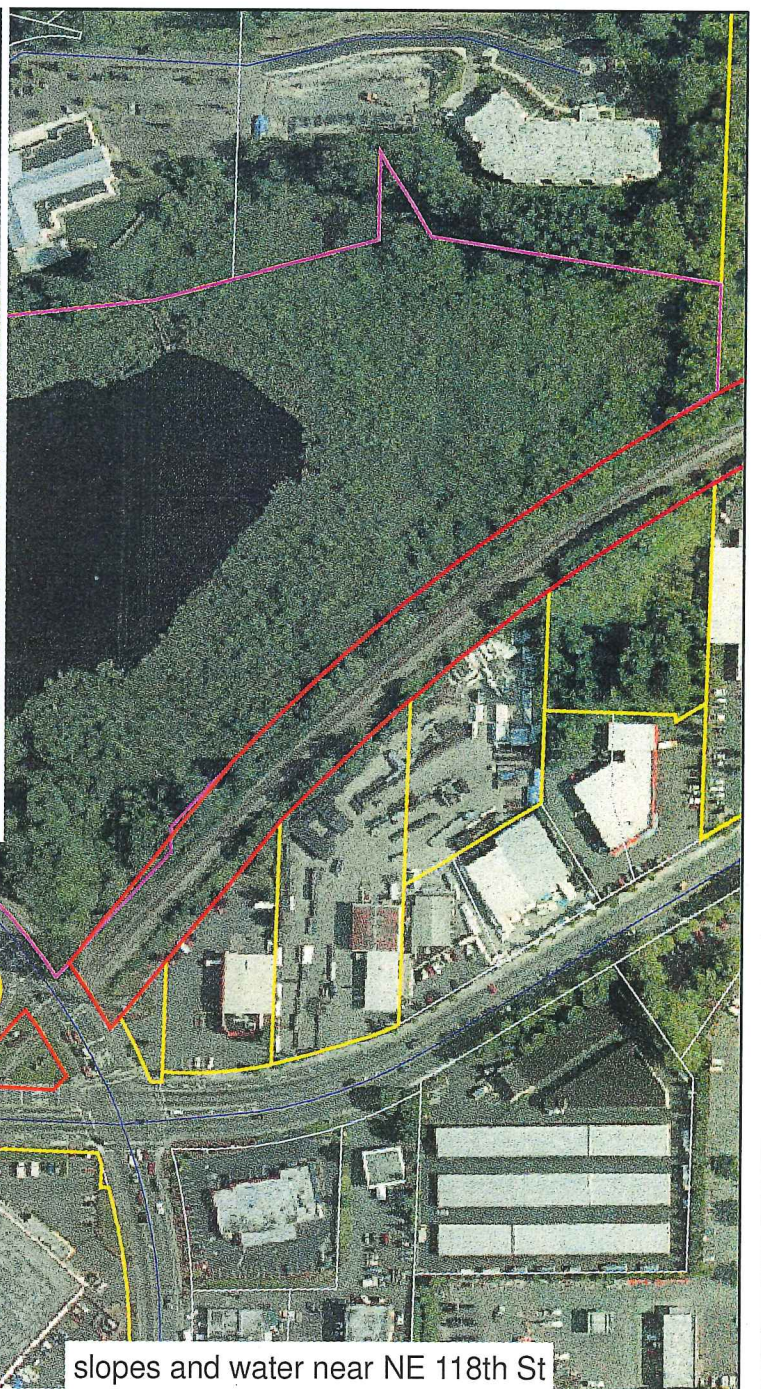
King County
Department of
Natural Resources and Parks
Parks and Recreation Division

March 28, 2006

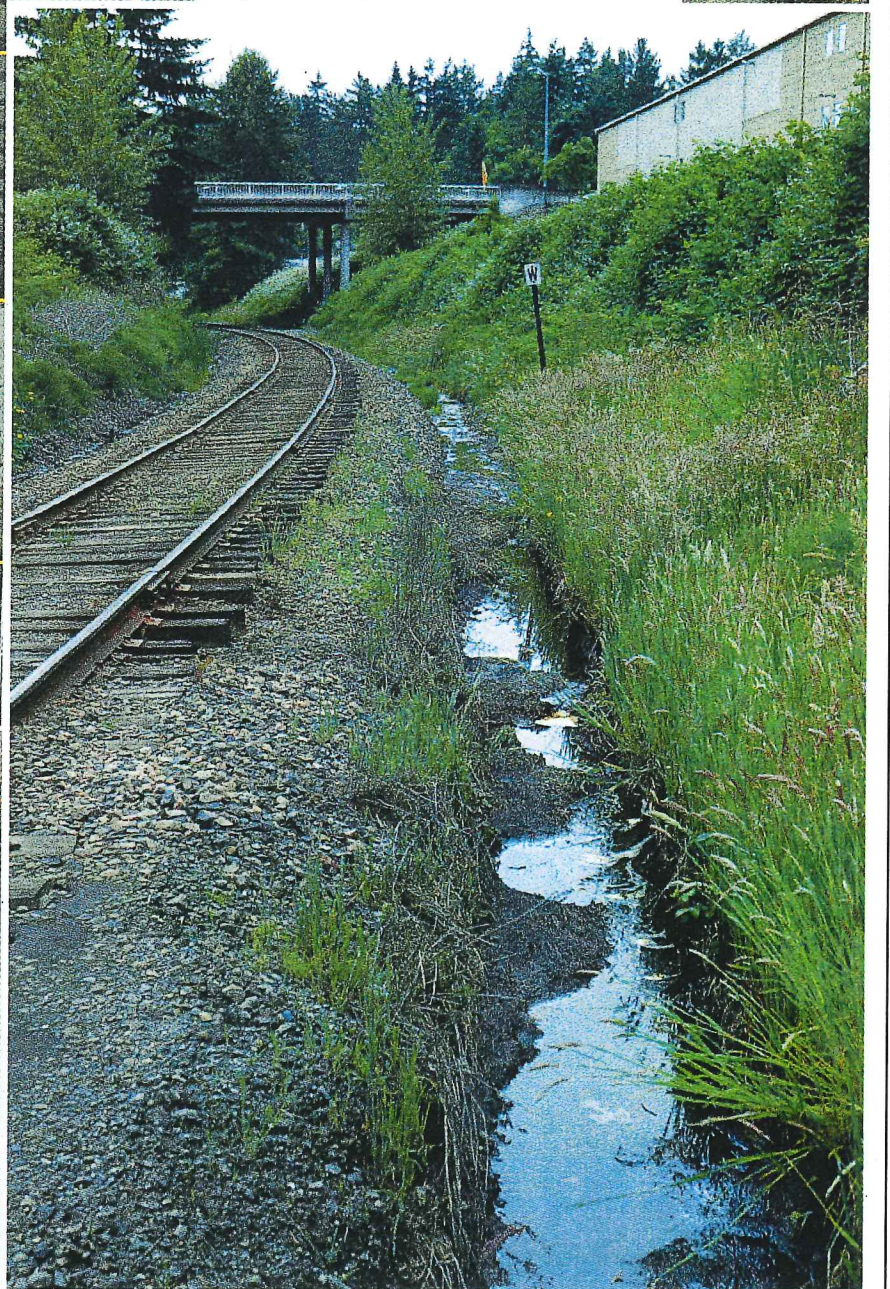
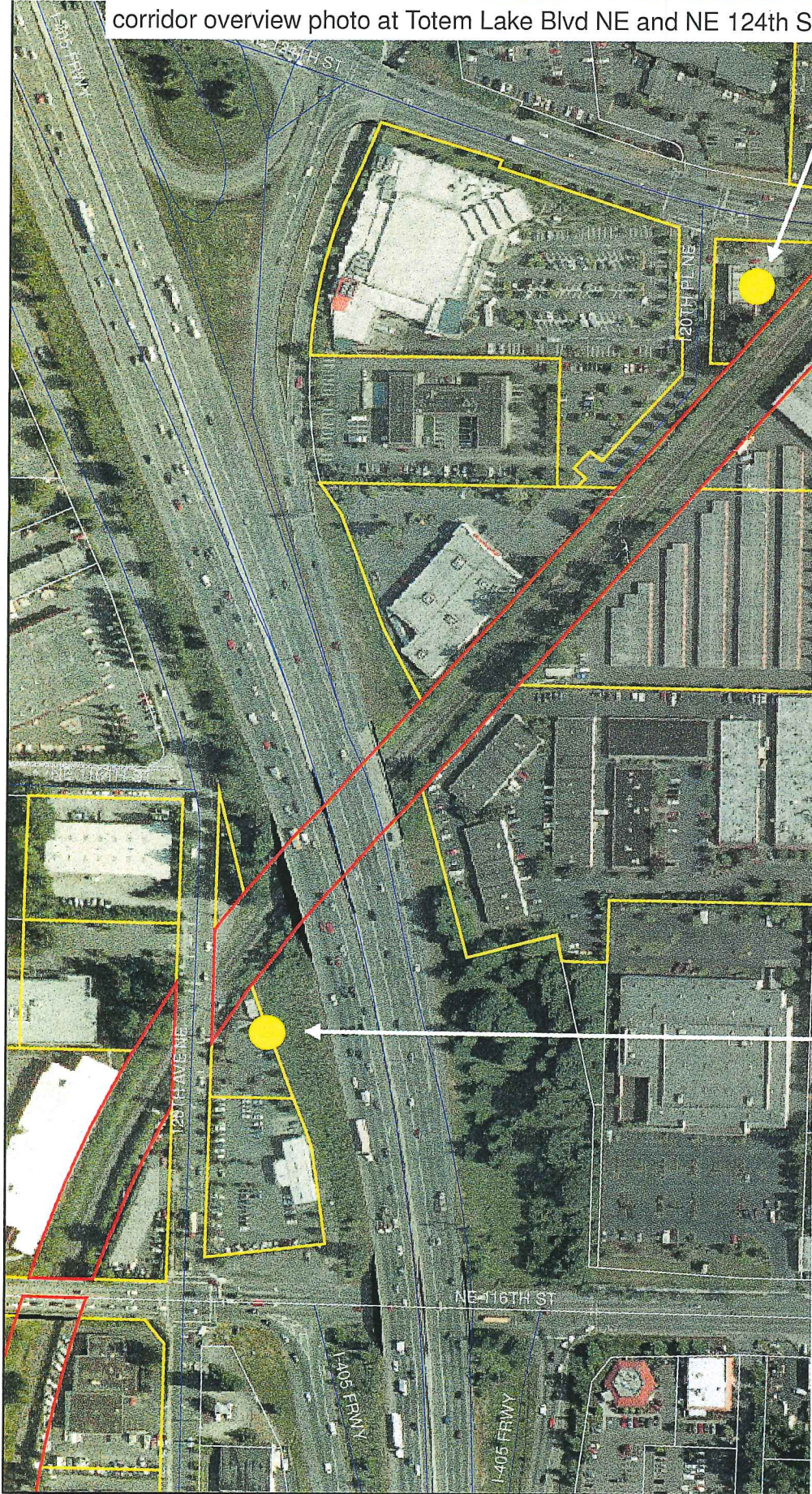




corridor overview photo at Totem Lake Blvd NE and NE 124th St



slopes and water near NE 118th St



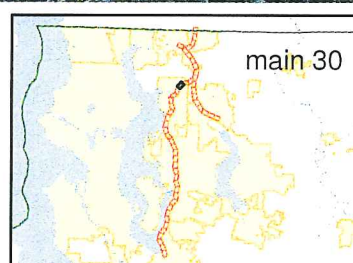
Eastside Rail Corridor Map 30

The information included on this map has been compiled by King County staff from a variety of sources and is subject to change without notice. King County makes no representations or warranties, express or implied, as to accuracy, completeness, timeliness, or rights to the use of such information. King County shall not be liable for any general, special, indirect, incidental, or consequential damages including, but not limited to, lost revenues or lost profits resulting from the use or misuse of the information contained on this map. Any sale of this map or information on this map is prohibited except by written permission of King County.

CL:\dnr\projects\Parks\working\projects\site_projects\BNSFapps\corridor_orthos.mxd

- BNSF Corridor
- Adjacent Parcels
- Parks

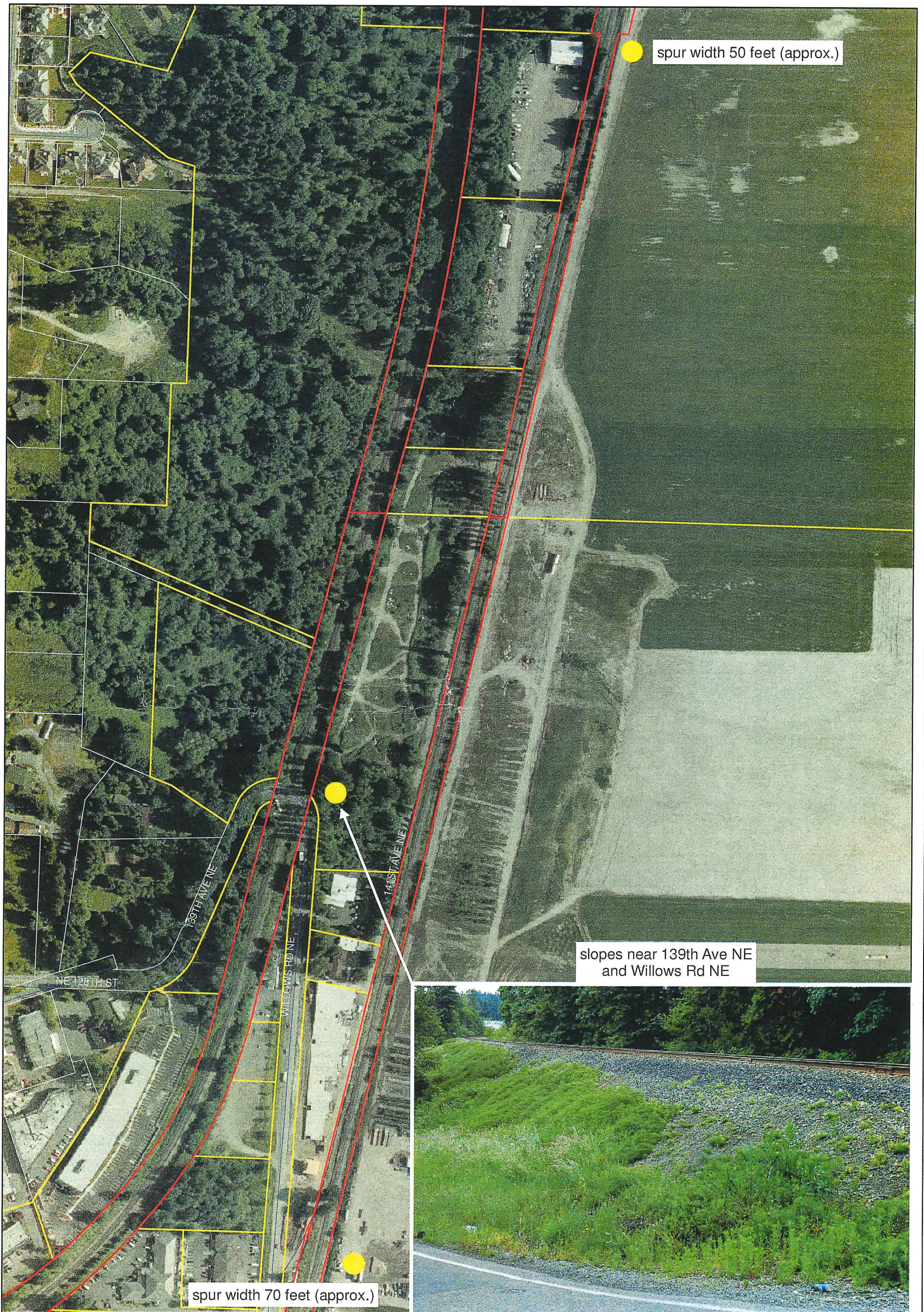
Air Photography 2002 USGS



King County
Department of
Natural Resources and Parks
Parks and Recreation Division

March 28, 2006

0 75 150 300 Feet



Eastside Rail Corridor Map 33

The information included on this map has been compiled by King County staff from a variety of sources and is subject to change without notice. King County makes no representations or warranties, express or implied, as to accuracy, completeness, timeliness, or rights to the use of such information. King County shall not be liable for any general, special, indirect, incidental, or consequential damages including, but not limited to, lost revenues or lost profits resulting from the use or misuse of the information contained on this map. Any sale of this map or information on this map is prohibited except by written permission of King County.

CL:\dnrp1\projects\Parks\working\projects\site_projects\BNSFapps\corridor_orthos.mxd

- BNSF Corridor
- Adjacent Parcels
- Parks

Air Photography 2002 USGS



King County
Department of
Natural Resources and Parks
Parks and Recreation Division

March 28, 2006

0 75 150 300
Feet



Eastside Rail Corridor

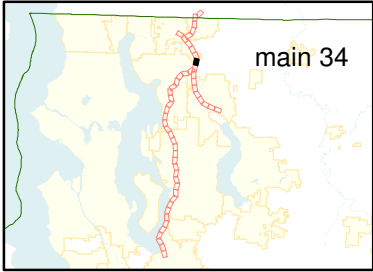
Map 34


The information included on this map has been compiled by King County staff from a variety of sources and is subject to change without notice. King County makes no representations or warranties, express or implied, as to accuracy, completeness, timeliness, or rights to the use of such information. King County shall not be liable for any general, special, indirect, incidental, or consequential damages including, but not limited to, lost revenues or lost profits resulting from the use or misuse of the information contained on this map. Any sale of this map or information on this map is prohibited except by written permission of King County.

CL:\dnrp1\projects\Parks\working\projects\site_projects\BNSF\apps\corridor_orthos_pics.mxd

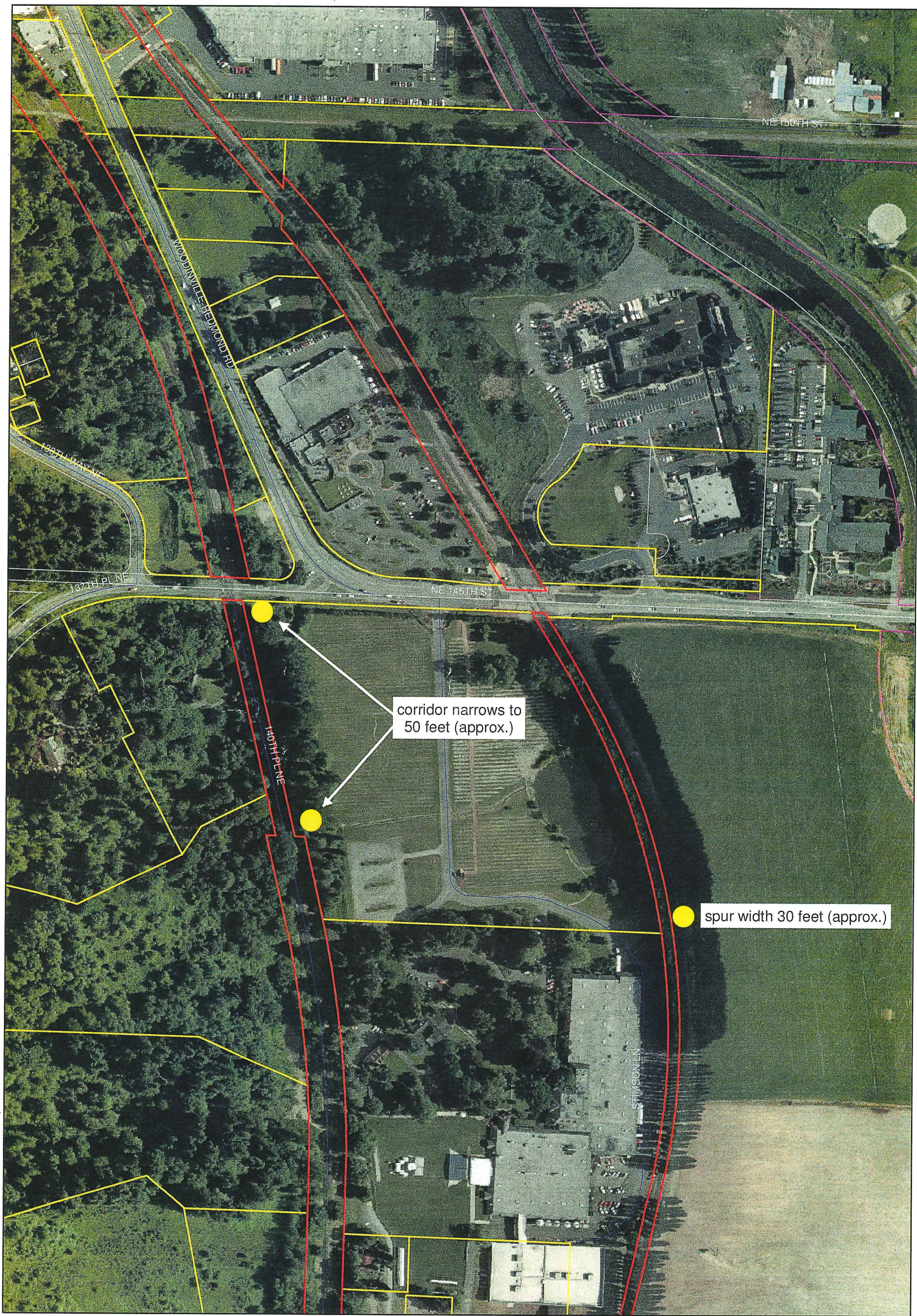
-  BNSF Corridor
-  Adjacent Parcels
-  Parks

Air Photography 2009



 **King County**
Department of
Natural Resources and Parks
Parks Division
November 7, 2012

0 75 150 300 Feet



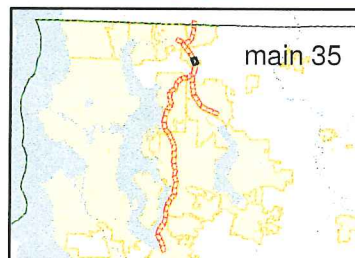
Eastside Rail Corridor Map 35

The information included on this map has been compiled by King County staff from a variety of sources and is subject to change without notice. King County makes no representations or warranties, express or implied, as to accuracy, completeness, timeliness, or rights to the use of such information. King County shall not be liable for any general, special, indirect, incidental, or consequential damages including, but not limited to, lost revenues or lost profits resulting from the use or misuse of the information contained on this map. Any sale of this map or information on this map is prohibited except by written permission of King County.

CL:\dnr\1\projects\Parksworking\projects\site_projects\BNSFapps\corridor_orthos.mxd

- BNSF Corridor
- Adjacent Parcels
- Parks

Air Photography 2002 USGS



King County
Department of
Natural Resources and Parks
Parks and Recreation Division

March 28, 2006

0 75 150 300 Feet



Eastside Rail Corridor

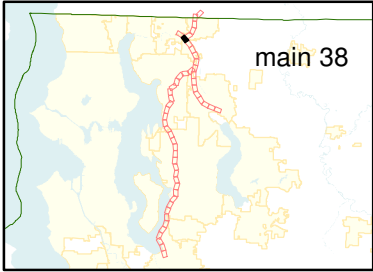
Map 38

The information included on this map has been compiled by King County staff from a variety of sources and is subject to change without notice. King County makes no representations or warranties, express or implied, as to accuracy, completeness, timeliness, or rights to the use of such information. King County shall not be liable for any general, special, indirect, incidental, or consequential damages including, but not limited to, lost revenues or lost profits resulting from the use or misuse of the information contained on this map. Any sale of this map or information on this map is prohibited except by written permission of King County.

CL:\dnrp1\projects\Parks\working\projects\site_projects\BNSF\apps\corridor_orthos_pics.mxd

- BNSF Corridor
- Adjacent Parcels
- Parks

Air Photography 2009



King County
Department of
Natural Resources and Parks
Parks Division
November 7, 2012

0 75 150 300 Feet



Eastside Rail Corridor

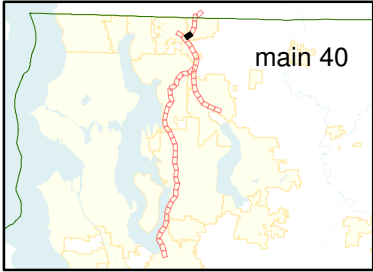
Map 40

The information included on this map has been compiled by King County staff from a variety of sources and is subject to change without notice. King County makes no representations or warranties, express or implied, as to accuracy, completeness, timeliness, or rights to the use of such information. King County shall not be liable for any general, special, indirect, incidental, or consequential damages including, but not limited to, lost revenues or lost profits resulting from the use or misuse of the information contained on this map. Any sale of this map or information on this map is prohibited except by written permission of King County.

CL:\dnr\p1\projects\Parks\working\projects\site_projects\BNSF\apps\corridor_orthos_pics.mxd

- BNSF Corridor
- Adjacent Parcels
- Parks

Air Photography 2009



King County
Department of
Natural Resources and Parks
Parks Division
November 7, 2012

0 75 150 300 Feet



Eastside Rail Corridor

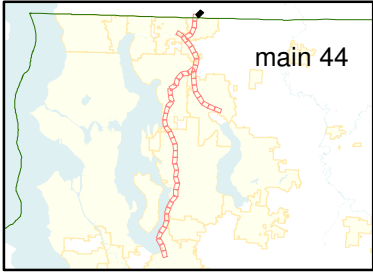
Map 44


The information included on this map has been compiled by King County staff from a variety of sources and is subject to change without notice. King County makes no representations or warranties, express or implied, as to accuracy, completeness, timeliness, or rights to the use of such information. King County shall not be liable for any general, special, indirect, incidental, or consequential damages including, but not limited to, lost revenues or lost profits resulting from the use or misuse of the information contained on this map. Any sale of this map or information on this map is prohibited except by written permission of King County.

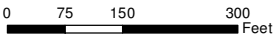
CL:\dnrp1\projects\Parks\working\projects\site_projects\BNSF\apps\corridor_orthos_pics.mxd

-  BNSF Corridor
-  Adjacent Parcels
-  Parks

Air Photography 2009



 **King County**
Department of
Natural Resources and Parks
Parks Division
November 7, 2012





Eastside Rail Corridor

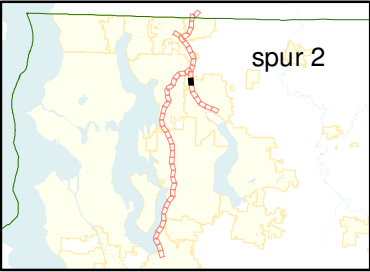
Map S2

The information included on this map has been compiled by King County staff from a variety of sources and is subject to change without notice. King County makes no representations or warranties, express or implied, as to accuracy, completeness, timeliness, or rights to the use of such information. King County shall not be liable for any general, special, indirect, incidental, or consequential damages including, but not limited to, lost revenues or lost profits resulting from the use or misuse of the information contained on this map. Any sale of this map or information on this map is prohibited except by written permission of King County.

CL:\dnrp1\projects\Parks\working\projects\site_projects\BNSF\apps\corridor_orthos_pics.mxd

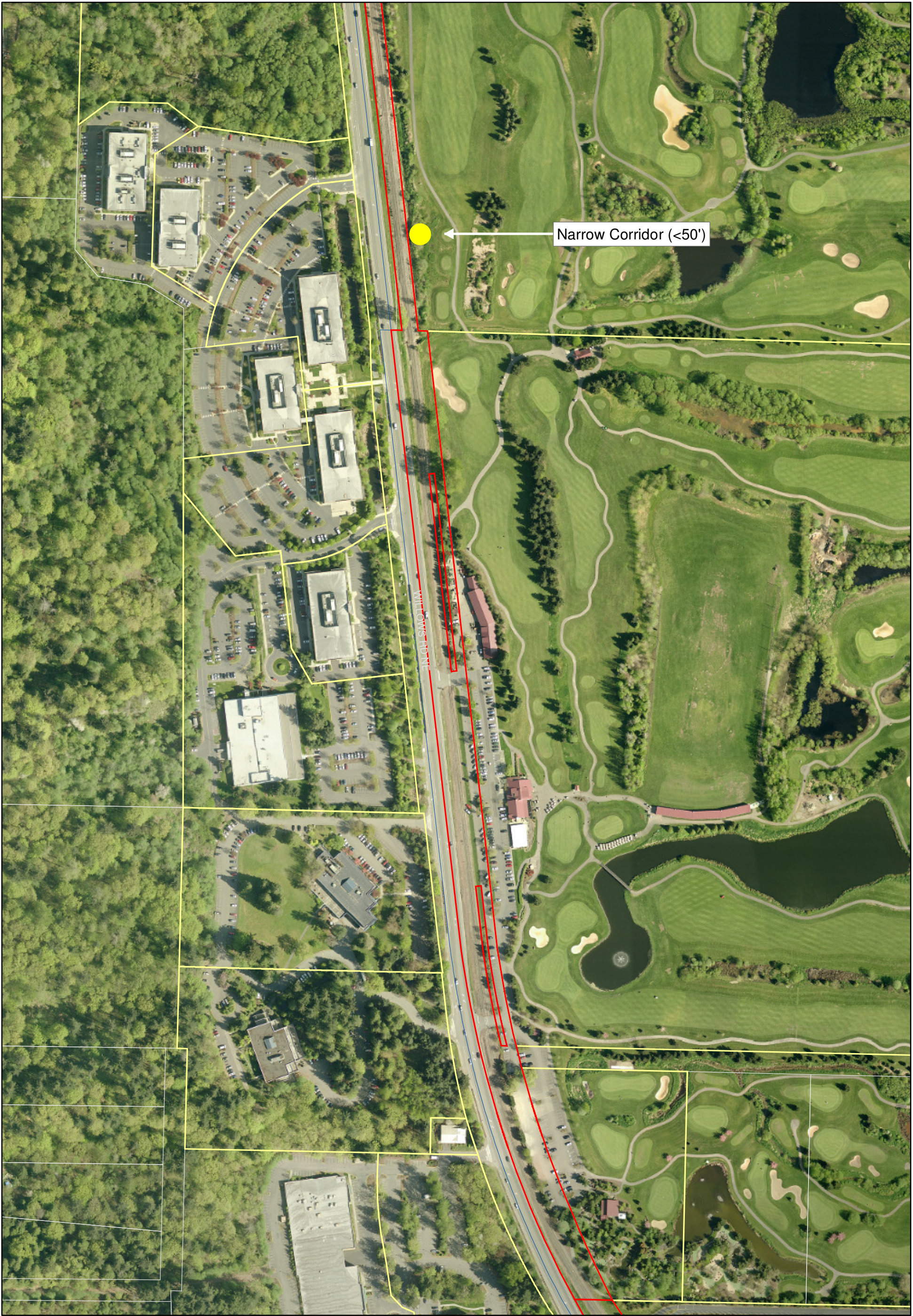
- BNSF Corridor
- Adjacent Parcels
- Parks

Air Photography 2009



King County
Department of
Natural Resources and Parks
Parks Division
November 7, 2012

0 75 150 300 Feet



Eastside Rail Corridor

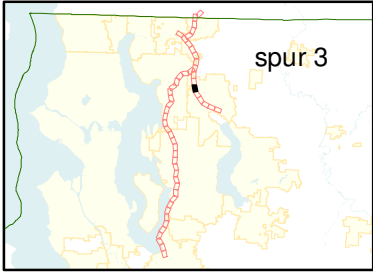
Map S3


The information included on this map has been compiled by King County staff from a variety of sources and is subject to change without notice. King County makes no representations or warranties, express or implied, as to accuracy, completeness, timeliness, or rights to the use of such information. King County shall not be liable for any general, special, indirect, incidental, or consequential damages including, but not limited to, lost revenues or lost profits resulting from the use or misuse of the information contained on this map. Any sale of this map or information on this map is prohibited except by written permission of King County.

CL:\dnrp1\projects\Parks\working\projects\site_projects\BNSF\apps\corridor_orthos_pics.mxd

-  BNSF Corridor
-  Adjacent Parcels
-  Parks

Air Photography 2009



 **King County**
Department of
Natural Resources and Parks
Parks Division
November 7, 2012

0 75 150 300 Feet



Eastside Rail Corridor

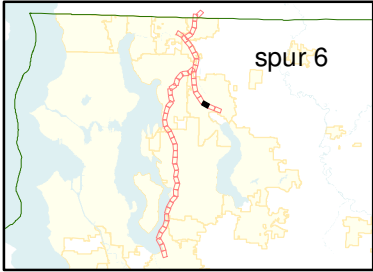
Map S6


The information included on this map has been compiled by King County staff from a variety of sources and is subject to change without notice. King County makes no representations or warranties, express or implied, as to accuracy, completeness, timeliness, or rights to the use of such information. King County shall not be liable for any general, special, indirect, incidental, or consequential damages including, but not limited to, lost revenues or lost profits resulting from the use or misuse of the information contained on this map. Any sale of this map or information on this map is prohibited except by written permission of King County.

CL:\dnrp\projects\Parks\working\projects\site_projects\BNSF\apps\corridor_orthos_pics.mxd

-  BNSF Corridor
-  Adjacent Parcels
-  Parks

Air Photography 2009



 **King County**
Department of
Natural Resources and Parks
Parks Division
November 7, 2012

0 75 150 300 Feet