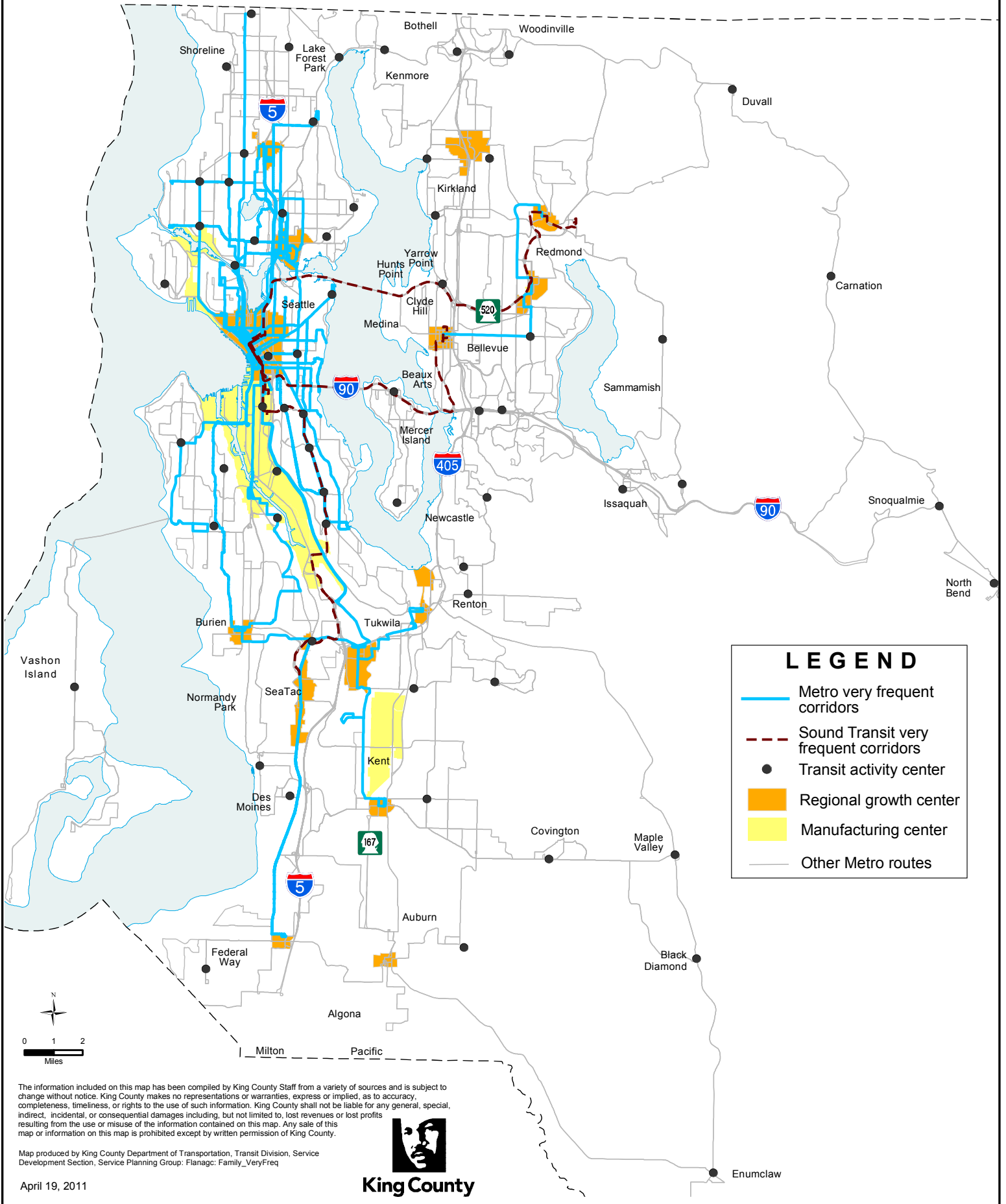


Metro All-Day & Peak Network

Very Frequent Service

Step 1 (six factors): score 25 - 40 points or Step 2: frequency adjustment based on ridership or designation as a Rapid Ride line



LEGEND

- Metro very frequent corridors
- - - Sound Transit very frequent corridors
- Transit activity center
- Regional growth center
- Manufacturing center
- Other Metro routes



The information included on this map has been compiled by King County Staff from a variety of sources and is subject to change without notice. King County makes no representations or warranties, express or implied, as to accuracy, completeness, timeliness, or rights to the use of such information. King County shall not be liable for any general, special, indirect, incidental, or consequential damages including, but not limited to, lost revenues or lost profits resulting from the use or misuse of the information contained on this map. Any sale of this map or information on this map is prohibited except by written permission of King County.



Map produced by King County Department of Transportation, Transit Division, Service Development Section, Service Planning Group; Flanag: Family_VeryFreq

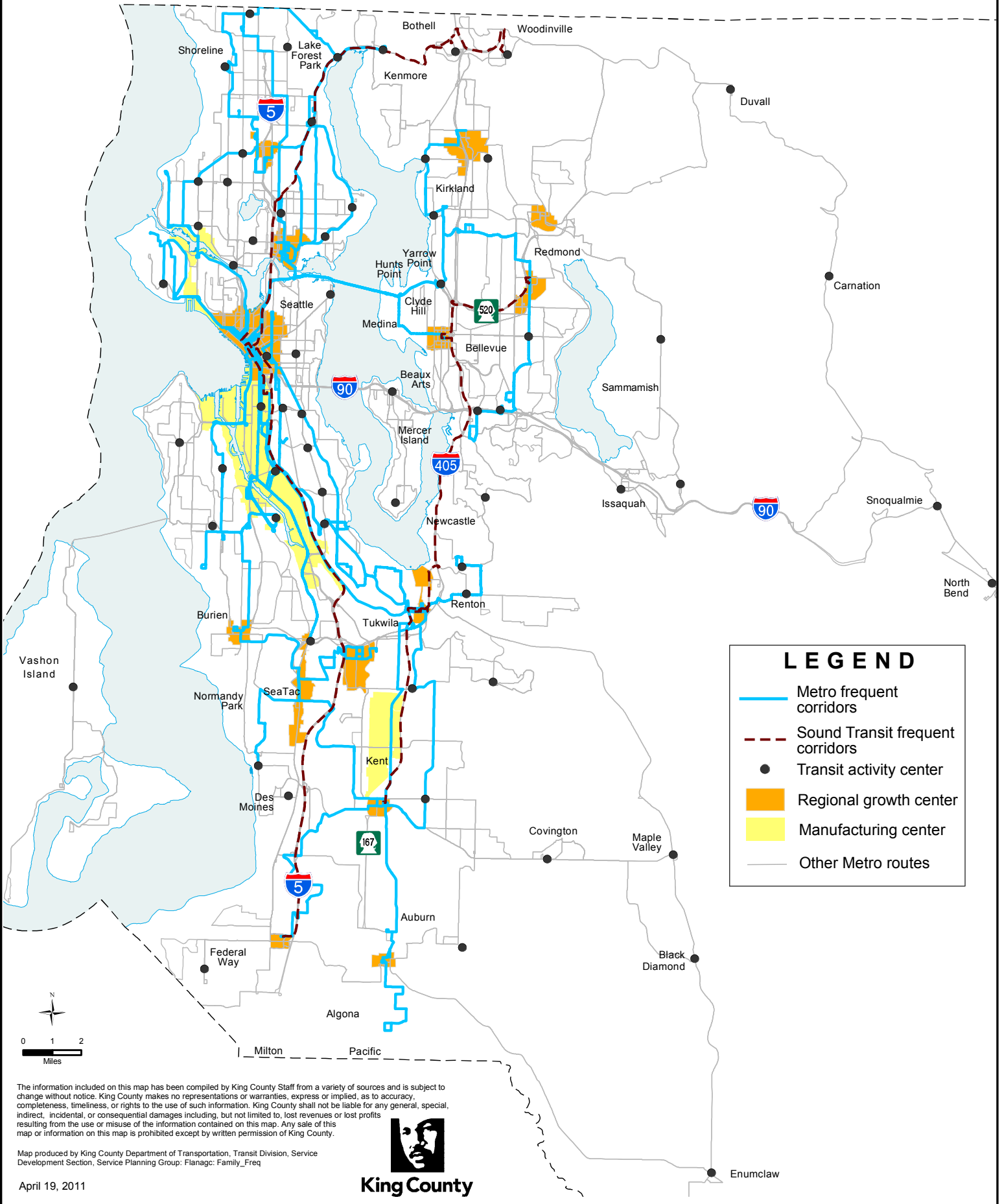
April 19, 2011

King County

Metro All-Day & Peak Network

Frequent Service

Step 1 (six factors): score 19 - 24 points or
 Step 2: frequency adjustment based on ridership



LEGEND

- Metro frequent corridors
- - - Sound Transit frequent corridors
- Transit activity center
- Regional growth center
- Manufacturing center
- Other Metro routes



The information included on this map has been compiled by King County Staff from a variety of sources and is subject to change without notice. King County makes no representations or warranties, express or implied, as to accuracy, completeness, timeliness, or rights to the use of such information. King County shall not be liable for any general, special, indirect, incidental, or consequential damages including, but not limited to, lost revenues or lost profits resulting from the use or misuse of the information contained on this map. Any sale of this map or information on this map is prohibited except by written permission of King County.

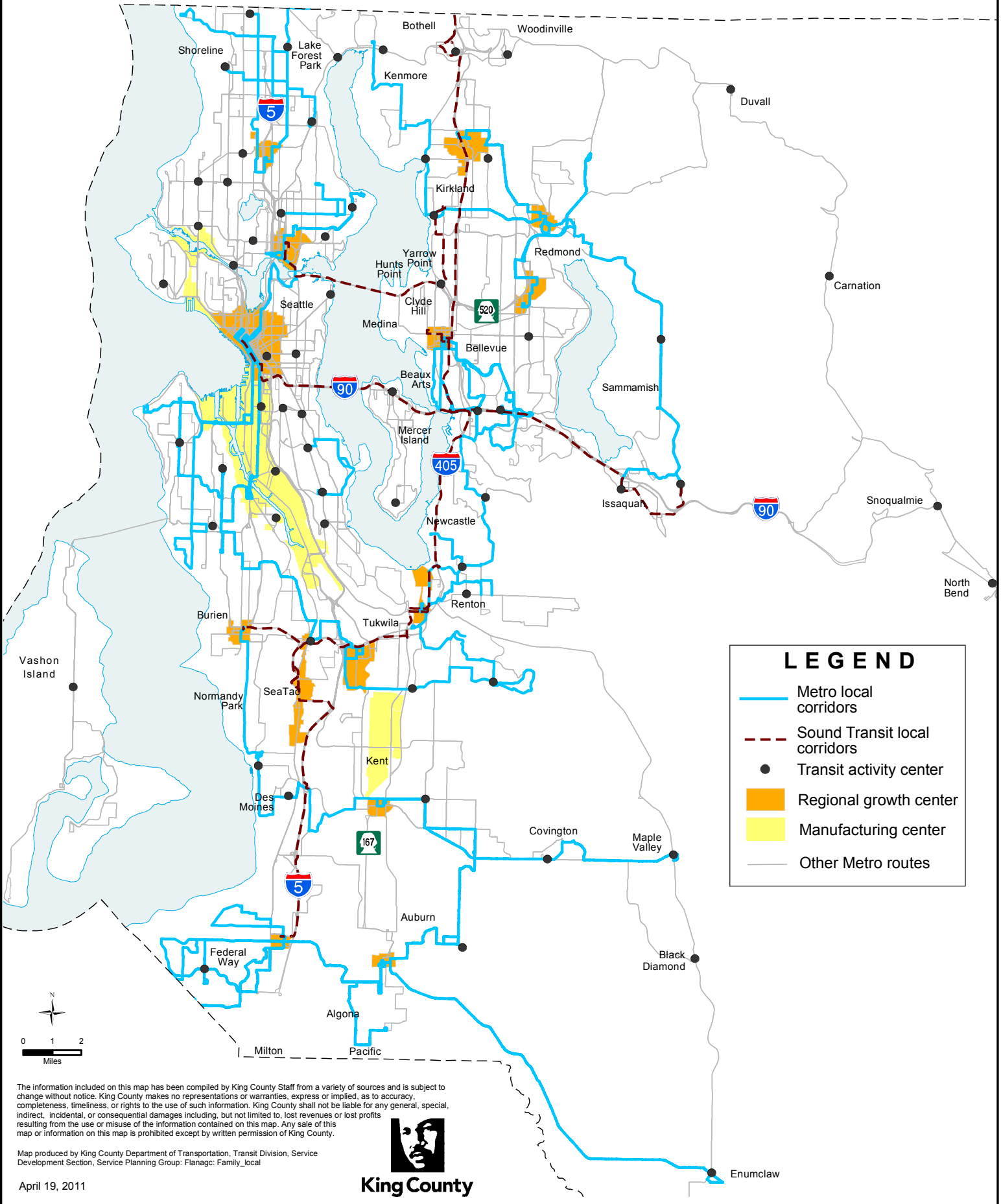


King County

Metro All-Day & Peak Network

Local Service

Step 1 (six factors): score 10 - 18 points or
 Step 2: frequency adjustment based on ridership



The information included on this map has been compiled by King County Staff from a variety of sources and is subject to change without notice. King County makes no representations or warranties, express or implied, as to accuracy, completeness, timeliness, or rights to the use of such information. King County shall not be liable for any general, special, indirect, incidental, or consequential damages including, but not limited to, lost revenues or lost profits resulting from the use or misuse of the information contained on this map. Any sale of this map or information on this map is prohibited except by written permission of King County.

Map produced by King County Department of Transportation, Transit Division, Service Development Section, Service Planning Group; Flanag: Family_local



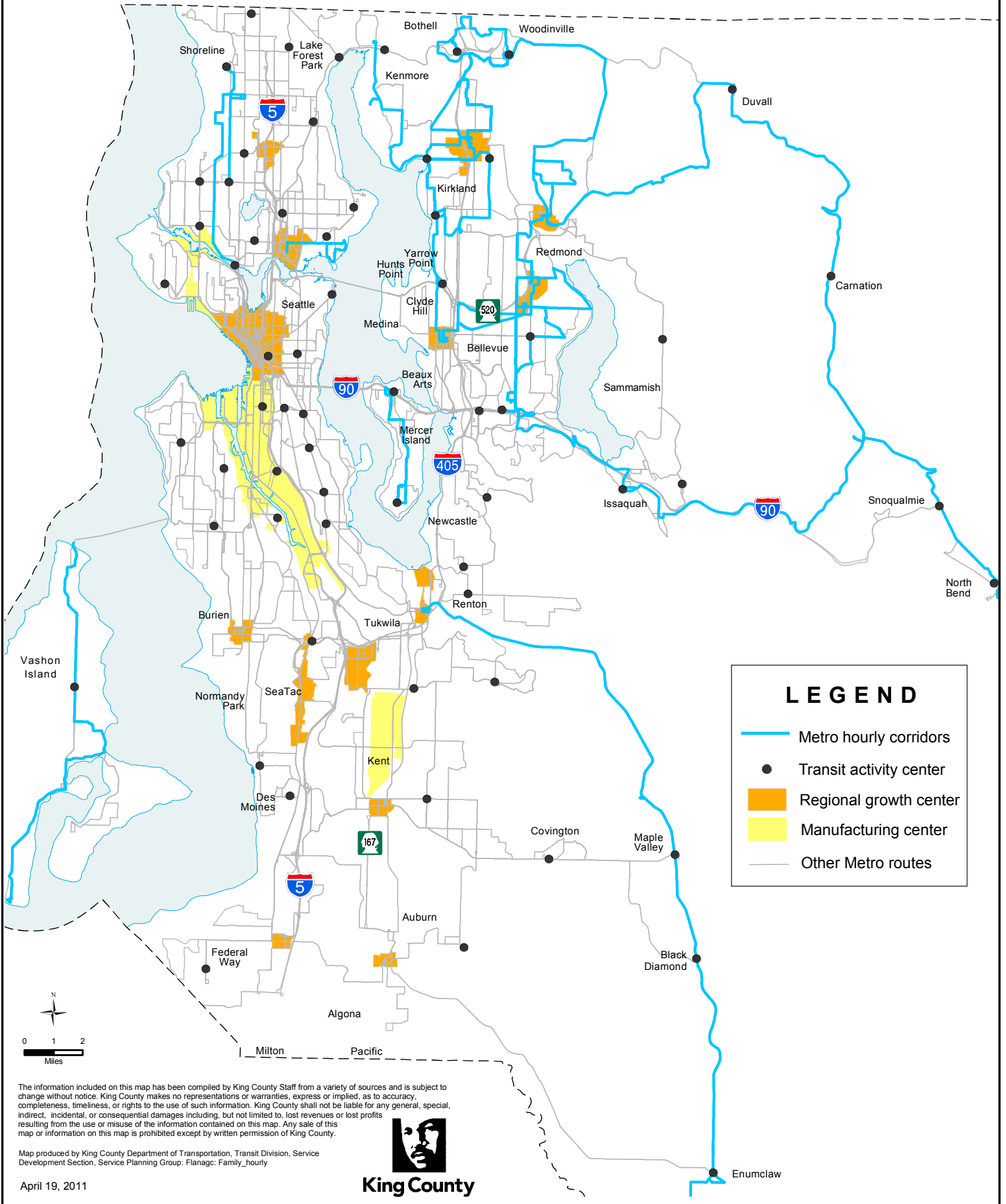
King County

April 19, 2011

Metro All-Day & Peak Network

Hourly Service

Step 1 (six factors): score 0 - 9 points or
 Step 2: frequency adjustment based on ridership



LEGEND

- Metro hourly corridors
- Transit activity center
- Regional growth center
- Manufacturing center
- Other Metro routes



The information included on this map has been compiled by King County Staff from a variety of sources and is subject to change without notice. King County makes no representations or warranties, express or implied, as to accuracy, completeness, timeliness, or rights to the use of such information. King County shall not be liable for any general, special, indirect, incidental, or consequential damages including, but not limited to, lost revenues or lost profits resulting from the use or misuse of the information contained on this map. Any sale of this map or information on this map is prohibited except by written permission of King County.



Map produced by King County Department of Transportation, Transit Division, Service Development Section, Service Planning Group; Flanag: Family_hourly

King County

April 19, 2011