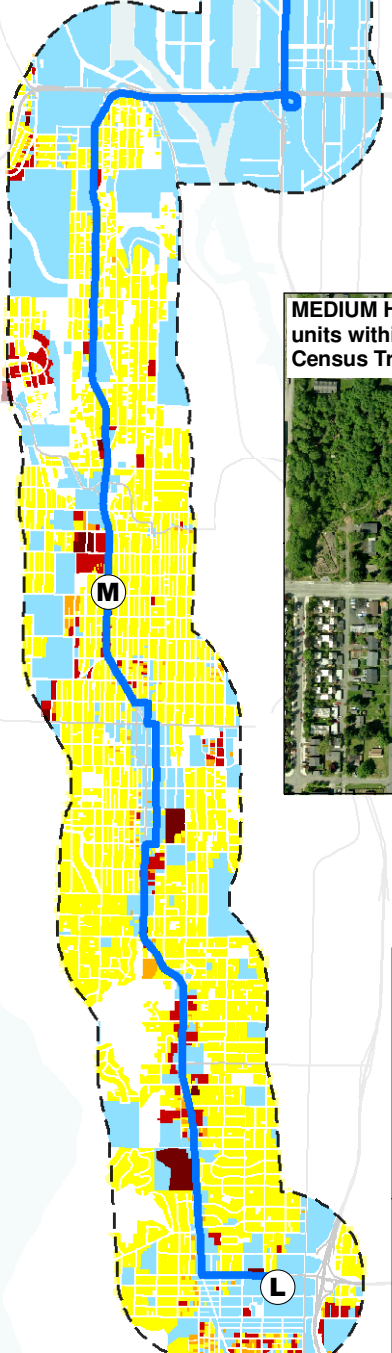
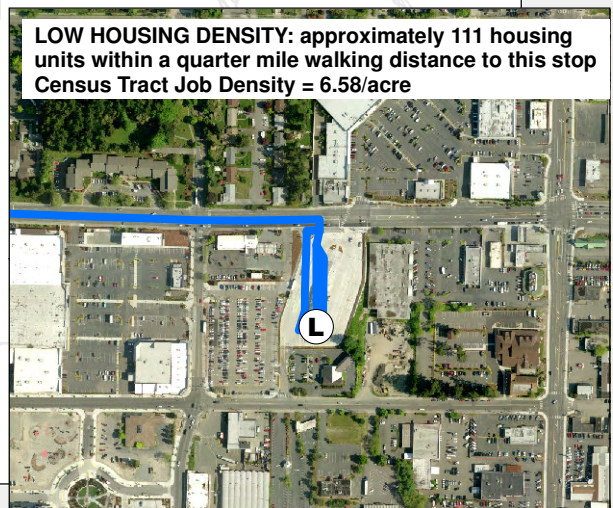
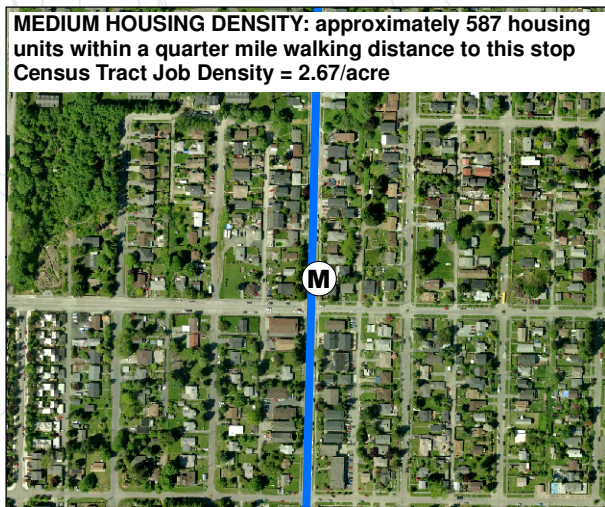
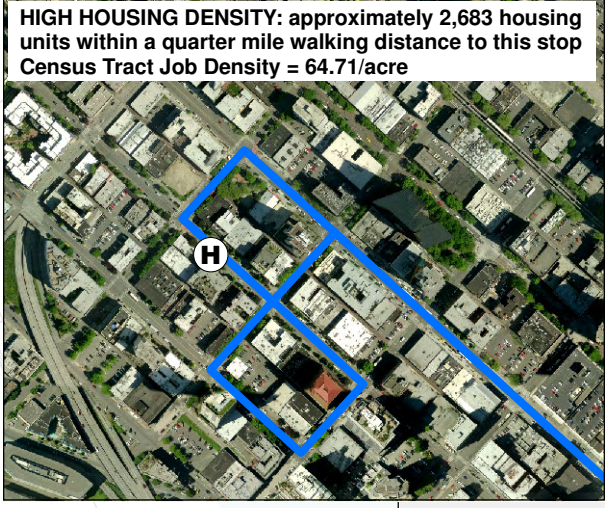


SEATTLE



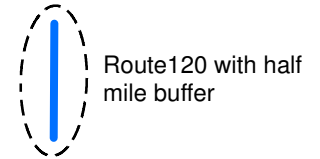
BURIEN

NOTE: The average job density of census tracts in the study area is 43.48 jobs per acre (2009 PSRC)



ROUTE 120

Housing and Commercial Properties



Residential parcels within half mile buffer

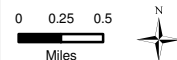
- 0 - 3 living units
- 4 - 10 living units
- 11 - 100 living units
- 101 - 543 living units

Commercial parcels within half mile buffer

- L Stop with low housing unit density
- M Stop with medium housing unit density
- H Stop with high housing unit density

The information included on this map has been compiled by King County Staff from a variety of sources and is subject to change without notice. King County makes no representations or warranties, express or implied, as to accuracy, completeness, timeliness, or rights to the use of such information. King County shall not be liable for any general, special, indirect, incidental, or consequential damages including, but not limited to, lost revenues or lost profits resulting from the use or misuse of the information contained on this map. Any sale of this map or information on this map is prohibited except by written permission of King County.

Map produced by King County Department of Transportation, Transit Division, Service Development Section, Service Planning Group. Flanagc: r120Parcels

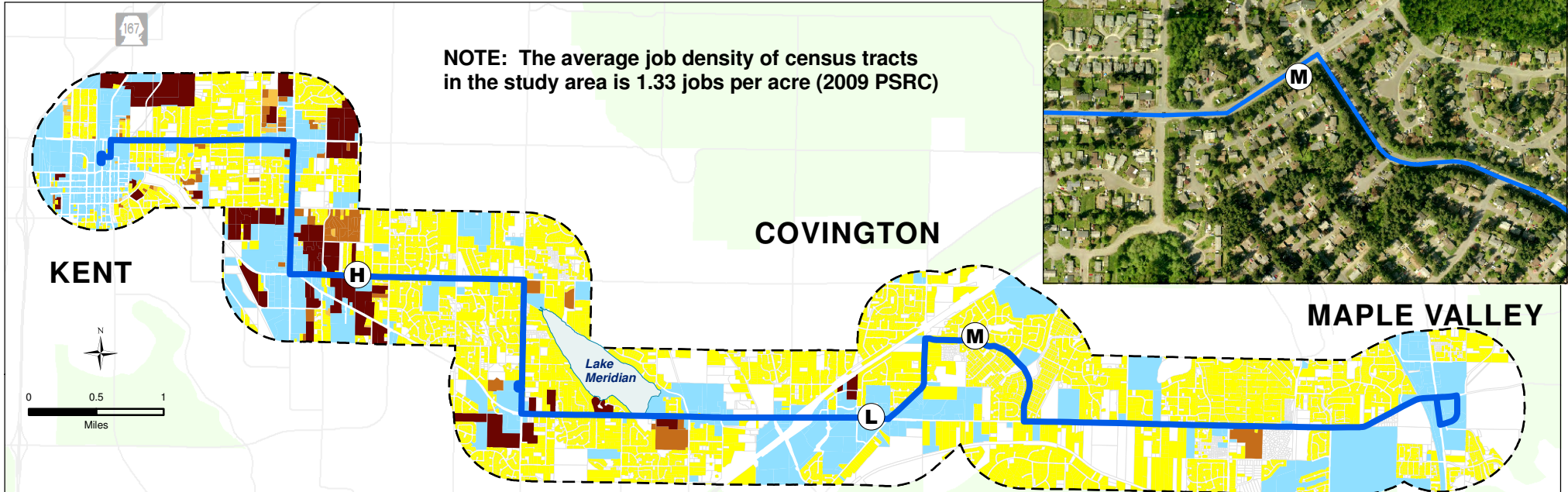


April 19, 2011

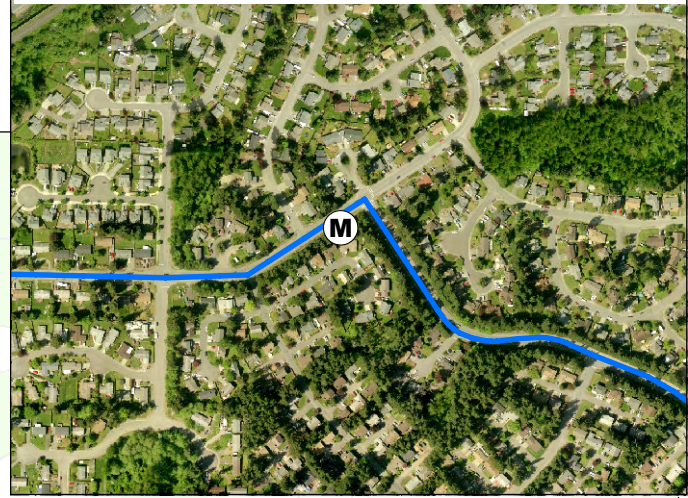


ROUTE 168

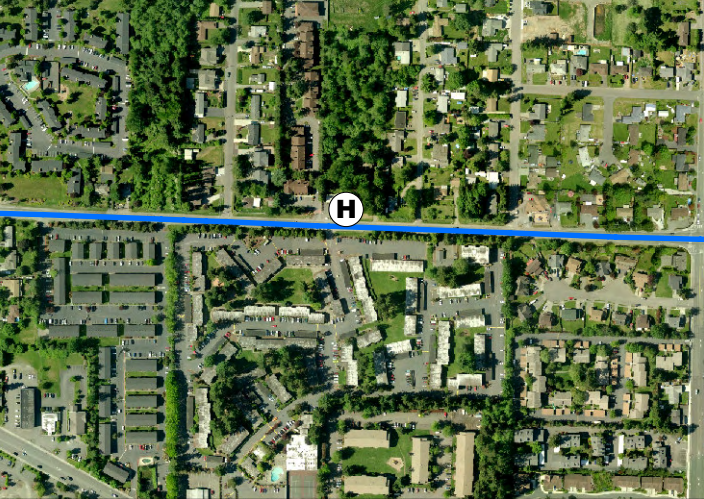
Housing and Commercial Properties with Selected Profiles



MEDIUM HOUSING DENSITY PROFILE: approximately 271 housing units within a quarter mile walking distance to this stop
Census Tract Job Density = .33/acre



HIGH HOUSING DENSITY PROFILE: approximately 1,374 housing units within a quarter mile walking distance to this stop
Census Tract job density = 2.13/acre



LOW HOUSING DENSITY PROFILE: approximately 8 housing units within a quarter mile walking distance to this stop
Census Tract job density = 1.45/acre



LEGEND

- Route 168 with half mile buffer
- Stop with low housing density
- Stop with medium housing density
- Stop with high housing density

Residential Parcels within buffer

0 - 3 living units	11 - 100 living units
4 - 10 living units	>100 living units

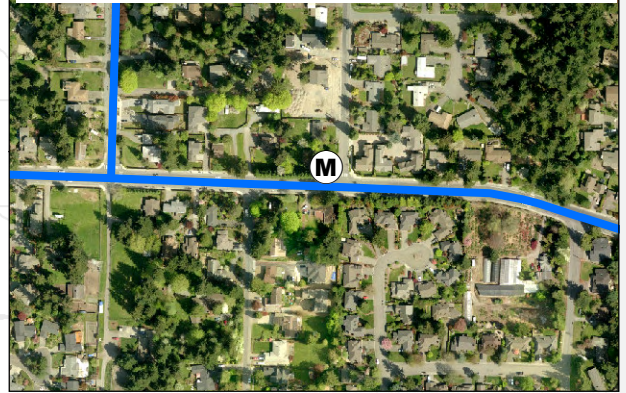
Commercial Parcels Rural King County

The information included on this map has been compiled by King County Staff from a variety of sources and is subject to change without notice. King County makes no representations or warranties, express or implied, as to accuracy, completeness, timeliness, or rights to the use of such information. King County shall not be liable for any general, special, indirect, incidental, or consequential damages including, but not limited to, lost revenues or lost profits resulting from the use or misuse of the information contained on this map. Any sale of this map or information on this map is prohibited except by written permission of King County.

KIRKLAND

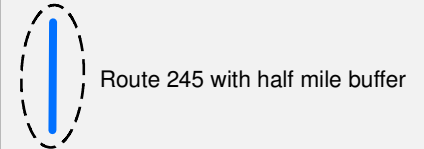
Note: The average job density of census tracts in the study area is 5.65 jobs per acre (2009 PSRC)

MEDIUM HOUSING DENSITY PROFILE: approximately 356 housing units within a quarter walk distance to this stop
Census Tract Job Density = 2.01/acre



ROUTE 245

Housing & Commercial Properties with Selected Profiles

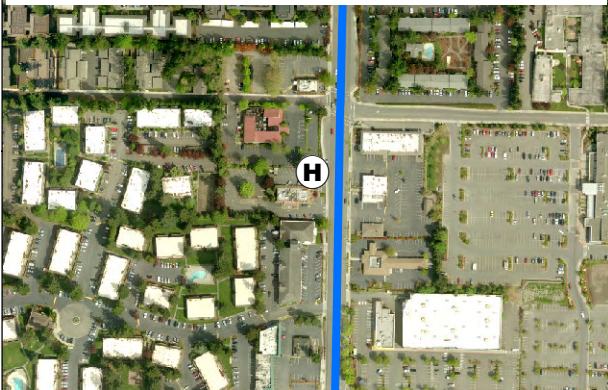


- L** Stop with low housing unit density
- M** Stop with medium housing unit density
- H** Stop with high housing unit density

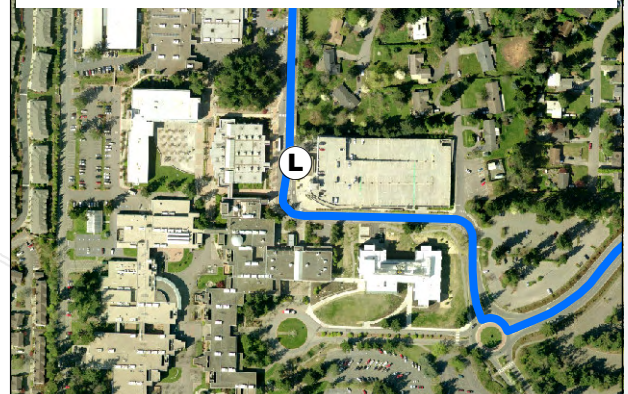
Residential parcels

- 0 - 3 living units
- 4 - 10 living units
- 11 - 100 living units
- 101 - 422 living units
- Commercial parcels

HIGH HOUSING DENSITY PROFILE: approximately 1688 housing units within a quarter walk distance to this stop
Census Tract Job Density = 4.46/acre



LOW HOUSING DENSITY PROFILE: approximately 25 housing units within a quarter walk distance to this stop
Census Tract Job Density = 9.07/acre



BELLEVUE

Eastgate

520

405



0 0.25 0.5
Miles

The information included on this map has been compiled by King County Staff from a variety of sources and is subject to change without notice. King County makes no representations or warranties, express or implied, as to accuracy, completeness, timeliness, or rights to the use of such information. King County shall not be liable for any general, special, indirect, incidental, or consequential damages including, but not limited to, lost revenues or lost profits resulting from the use or misuse of the information contained on this map. Any sale of this map or information on this map is prohibited except by written permission of King County.

Map produced by King County Department of Transportation, Transit Division, Service Development Section, Service Planning Group Flanag: rt245Parcels April 19, 2011



King County