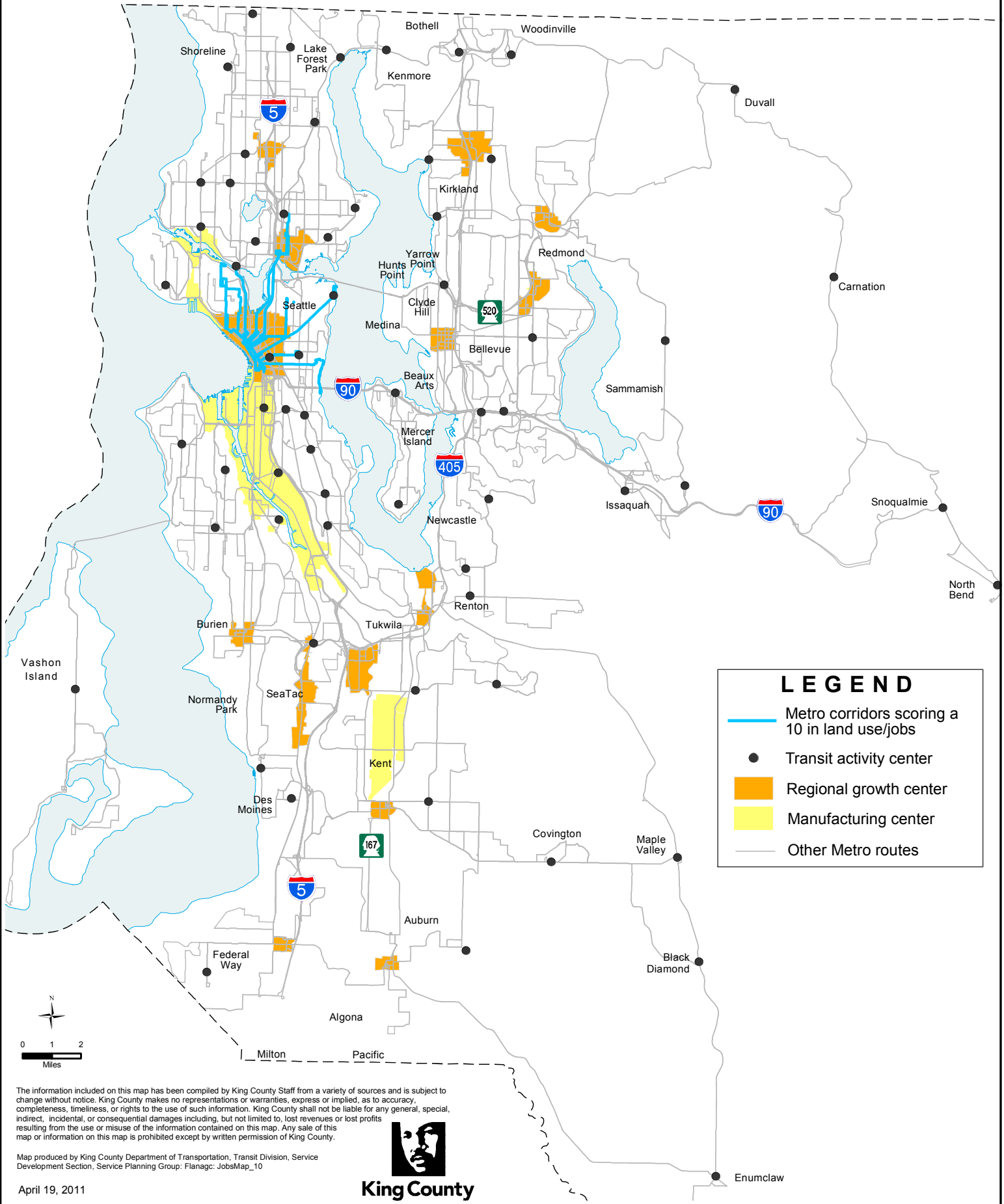


Metro All-Day & Peak Network

Land Use - Jobs Score 10

Step 1: score based on jobs within 1/4 mile of stops per corridor mile (10 = 17,390 or more jobs)



LEGEND

- Metro corridors scoring a 10 in land use/jobs
- Transit activity center
- Regional growth center
- Manufacturing center
- Other Metro routes



The information included on this map has been compiled by King County Staff from a variety of sources and is subject to change without notice. King County makes no representations or warranties, express or implied, as to accuracy, completeness, timeliness, or rights to the use of such information. King County shall not be liable for any general, special, indirect, incidental, or consequential damages including, but not limited to, lost revenues or lost profits resulting from the use or misuse of the information contained on this map. Any sale of this map or information on this map is prohibited except by written permission of King County.



Map produced by King County Department of Transportation, Transit Division, Service Development Section, Service Planning Group: Flanagc: JobsMap_10

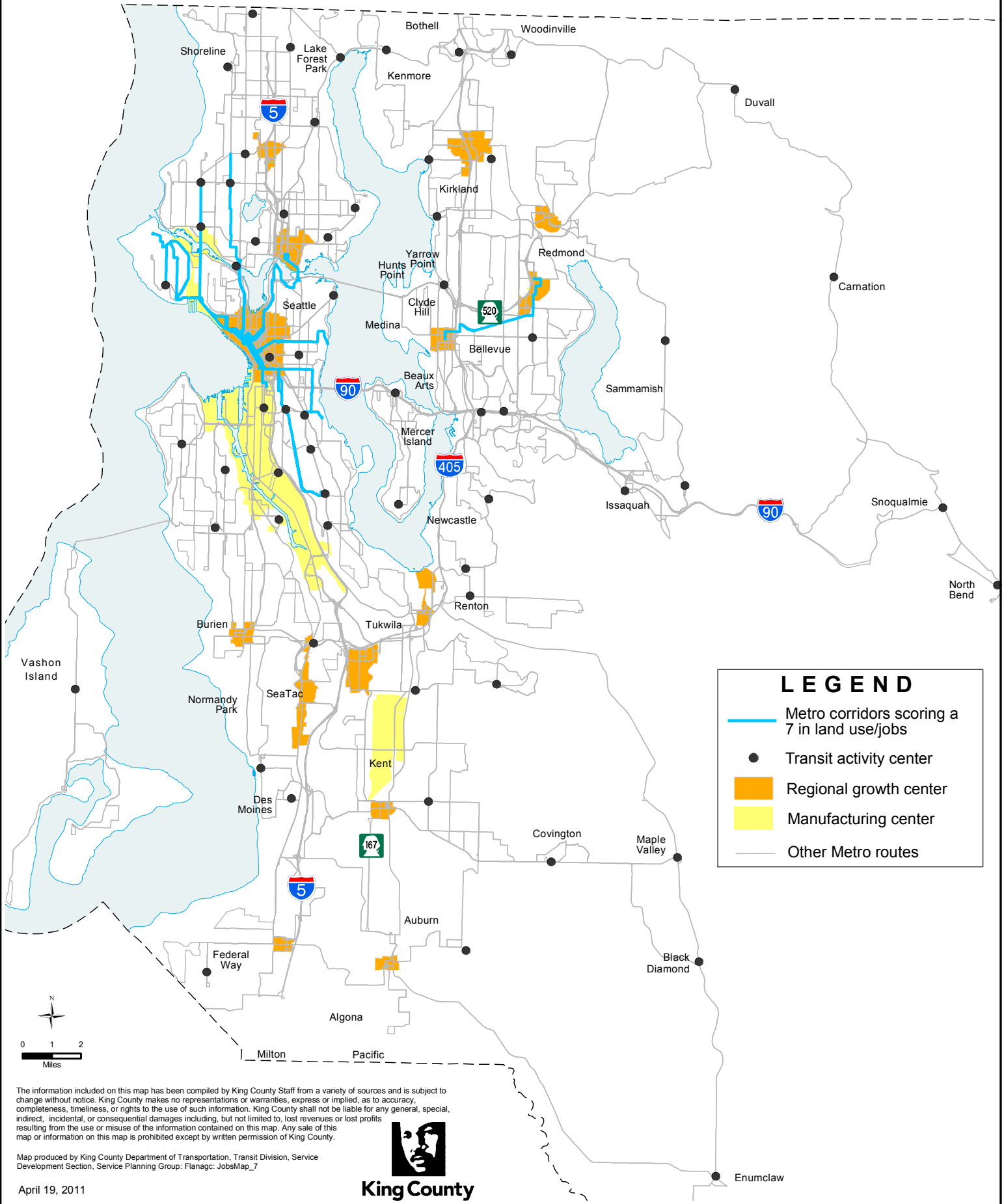
King County

April 19, 2011






Metro All-Day & Peak Network

Land Use - Jobs Score 7

Step 1: score based on jobs within 1/4 mile of stops per corridor mile (7 = 11,480-17,389 jobs)



LEGEND

-  Metro corridors scoring a 7 in land use/jobs
-  Transit activity center
-  Regional growth center
-  Manufacturing center
-  Other Metro routes



The information included on this map has been compiled by King County Staff from a variety of sources and is subject to change without notice. King County makes no representations or warranties, express or implied, as to accuracy, completeness, timeliness, or rights to the use of such information. King County shall not be liable for any general, special, indirect, incidental, or consequential damages including, but not limited to, lost revenues or lost profits resulting from the use or misuse of the information contained on this map. Any sale of this map or information on this map is prohibited except by written permission of King County.

Map produced by King County Department of Transportation, Transit Division, Service Development Section, Service Planning Group: Flanagc: JobsMap_7



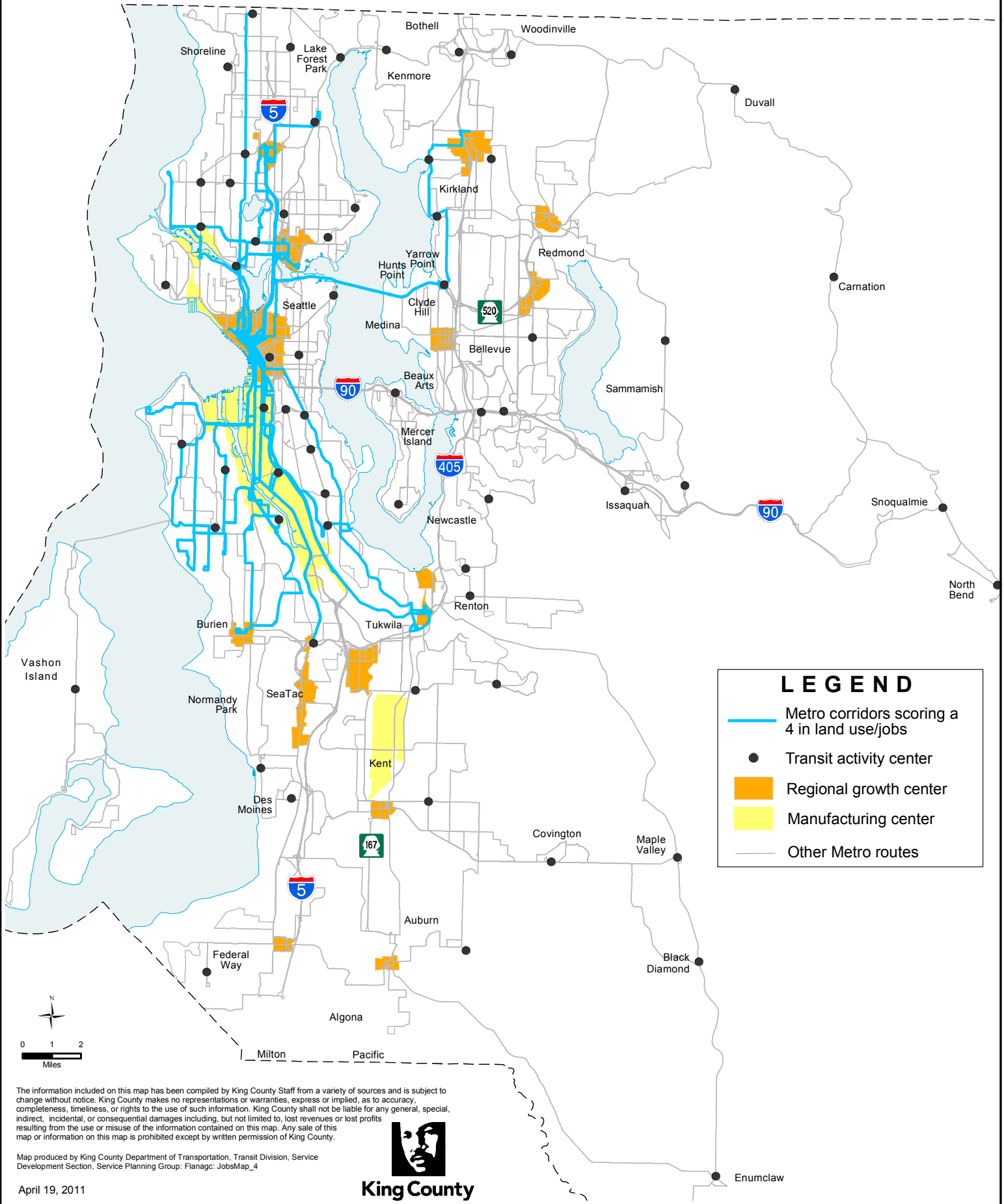
King County

April 19, 2011

Metro All-Day & Peak Network

Land Use - Jobs Score 4

Step 1: score based on jobs within 1/4 mile of stops per corridor mile (4 = 5,810-11,479 jobs)



LEGEND

- Metro corridors scoring a 4 in land use/jobs
- Transit activity center
- Regional growth center
- Manufacturing center
- Other Metro routes



The information included on this map has been compiled by King County Staff from a variety of sources and is subject to change without notice. King County makes no representations or warranties, express or implied, as to accuracy, completeness, timeliness, or rights to the use of such information. King County shall not be liable for any general, special, indirect, incidental, or consequential damages including, but not limited to, lost revenues or lost profits resulting from the use or misuse of the information contained on this map. Any sale of this map or information on this map is prohibited except by written permission of King County.

Map produced by King County Department of Transportation, Transit Division, Service Development Section, Service Planning Group: Flanag: JobsMap_4



King County

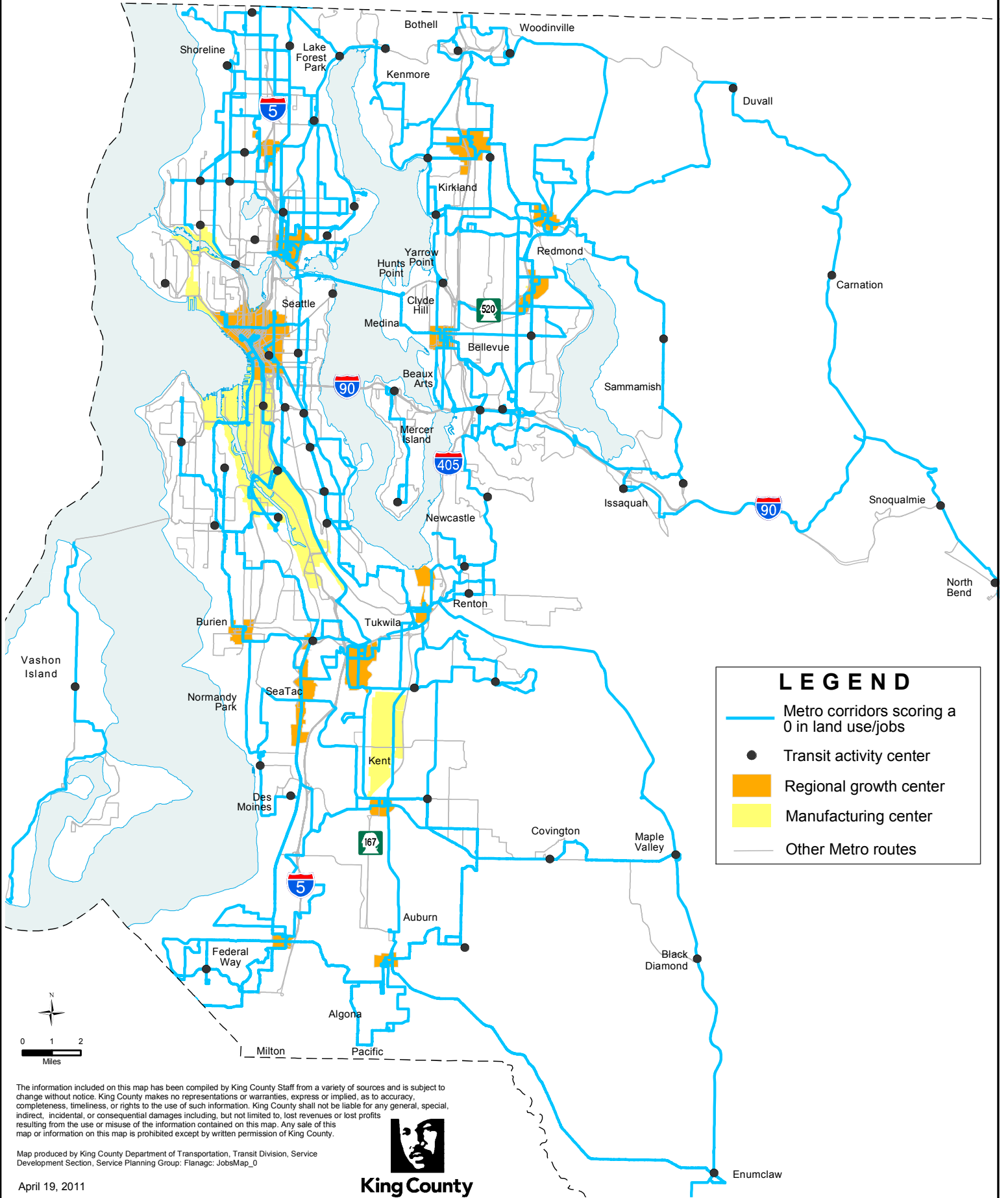
April 19, 2011

Enumclaw

Metro All-Day & Peak Network

Land Use - Jobs Score 0

Step 1: score based on jobs within 1/4 mile of stops per corridor mile (0 = less than 5,810 jobs)



LEGEND

- Metro corridors scoring a 0 in land use/jobs
- Transit activity center
- Regional growth center
- Manufacturing center
- Other Metro routes

The information included on this map has been compiled by King County Staff from a variety of sources and is subject to change without notice. King County makes no representations or warranties, express or implied, as to accuracy, completeness, timeliness, or rights to the use of such information. King County shall not be liable for any general, special, indirect, incidental, or consequential damages including, but not limited to, lost revenues or lost profits resulting from the use or misuse of the information contained on this map. Any sale of this map or information on this map is prohibited except by written permission of King County.



Map produced by King County Department of Transportation, Transit Division, Service Development Section, Service Planning Group; Flanag: JobsMap_0

April 19, 2011

King County