

2023 Cooperative Watershed Management Grant Program (WRIA CWM Grants)

KING COUNTY FLOOD CONTROL DISTRICT BOARD OF SUPERVISORS

SEPTEMBER 2023





IN CRISIS

NOT KEEPING PACE

MAKING PROGRESS

APPROACHING

Snake River Spring/Summer Chinook

Puget Sound Chinook

Snake River Basin Steelhead

Lower Columbia River Chinook

Lower Columbia River Coho

Lower Columbia River Steelhead

Hood Canal Summer Run Chum

Snake R

Lake Ozette Sockeye

Upper Columbia River Spring Chinook

Upper Columbia River Steelhead

Middle Columbia River Steelhead

Puget Sound Steelhead*

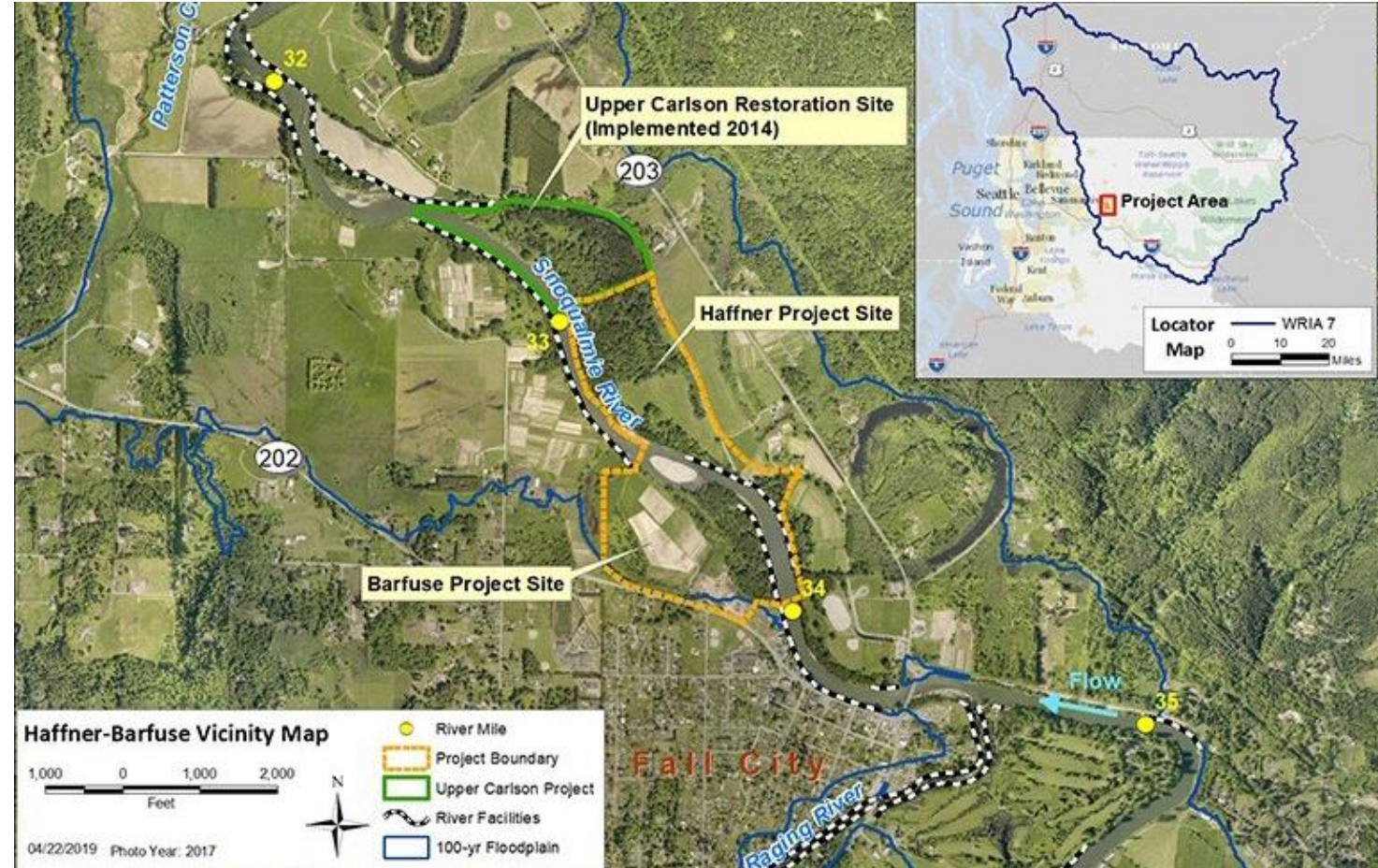
Columbia River Chum*

Salmon are:

- Tribal right
- Cultural cornerstone
- Commercial fishery
- Recreational fishery
- Tribal fishery
- Keystone species
- Orca primary food source

Projects in Action | WRIA 7

Fall City Floodplain Restoration



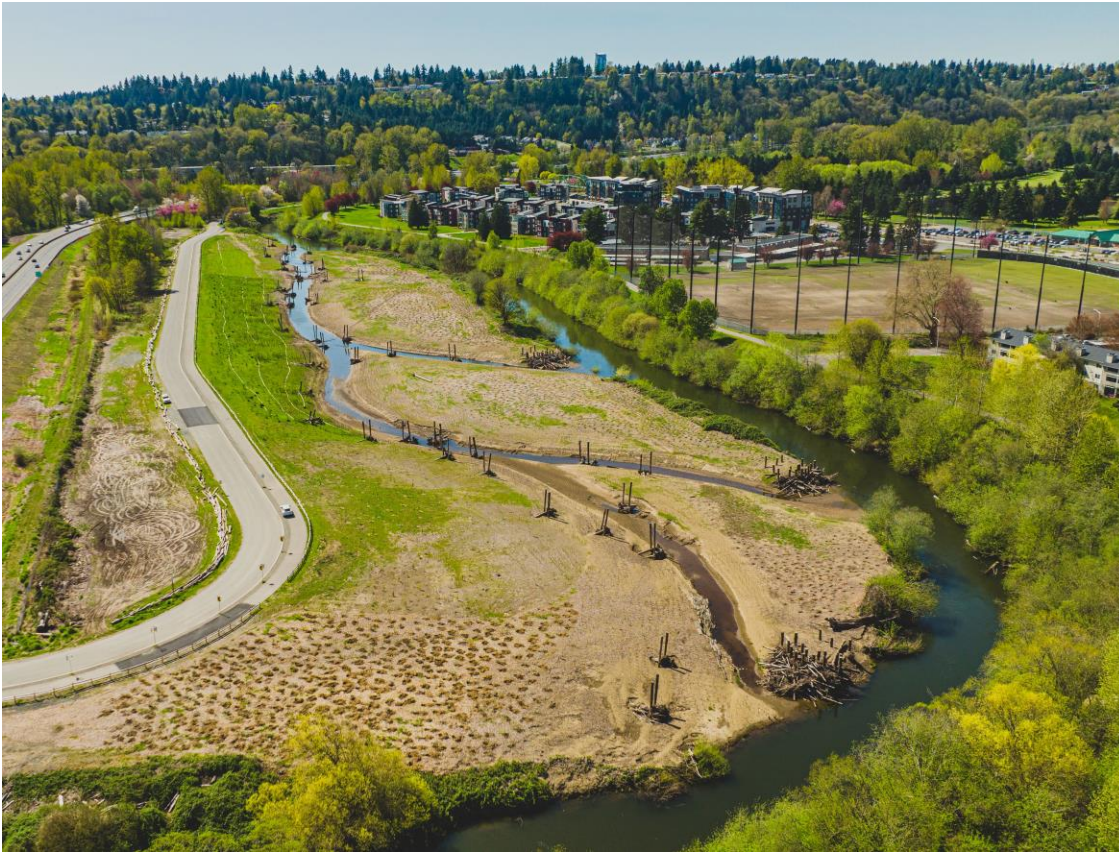
Projects in Action | WRIA 8

Lower Issaquah Creek Stream and Riparian Habitat Enhancement Project – City of Issaquah



Projects in Action | WRIA 9

Downey Farmstead Restoration



Projects in Action | WRIA 10

Boise Creek Restoration at Enumclaw Golf Course



King County Flood Control District WRIA Grant Allocation

**2023 WRIA FCD Grant Allocation
\$12.2 M**

**Snoqualmie
(WRIA 7)
\$2.3 M**

**Lake Washington/
Cedar/Sammamish
(WRIA 8)
\$5.1 M**

**Green/Duwamish
(WRIA 9)
\$4.1 M**

**Puyallup/White
(WRIA 10)
\$552 K**



King County Water
Resource Inventory
Areas (WRIAs)

- WRIA boundary
- - - King County boundary
- Incorporated areas

King County
Department of
Natural Resources and Parks

2023 Project Summary

Project Type	# of Projects	% of Total Grant Allocation
Restoration & Protection	40	77%
Monitoring & Studies	18	15%
Education & Outreach	19	6%
Project Assistance & Coordination	2	2%
TOTAL	79	100%

2023 Project Summary

Total Funding Requested	\$15,288,710
Total Funding Available	\$12,163,818*
Difference between Requested and Available	(\$3,124,892)
Secured Leverage Funds	\$10,766,889

* Total includes returned funds from past grants



WRIA 7



Snoqualmie / South Fork Skykomish Watersheds

2023 Snoqualmie Forum Cooperative Watershed Management (CWM) Final Grant Applications

BASIN-WIDE

EDUCATION & OUTREACH

- 1 Community Action Training School (CATS) 2024
- 2 Salmon in Schools 2023-2024
- 3 Youth Engaged in Sustainable Systems (YESS) in Riverview School District

MONITORING & ASSESSMENT

- 0 2024 Snoqualmie River Juvenile Salmon Outmigration Monitoring*
- 4 Designing habitat restoration projects to increase juvenile Chinook growth and food resources
- 5 Cherry Creek and Raging River NetMap Model*
- 6 KC Fish Passage Barrier Supplementation (Phase II)*

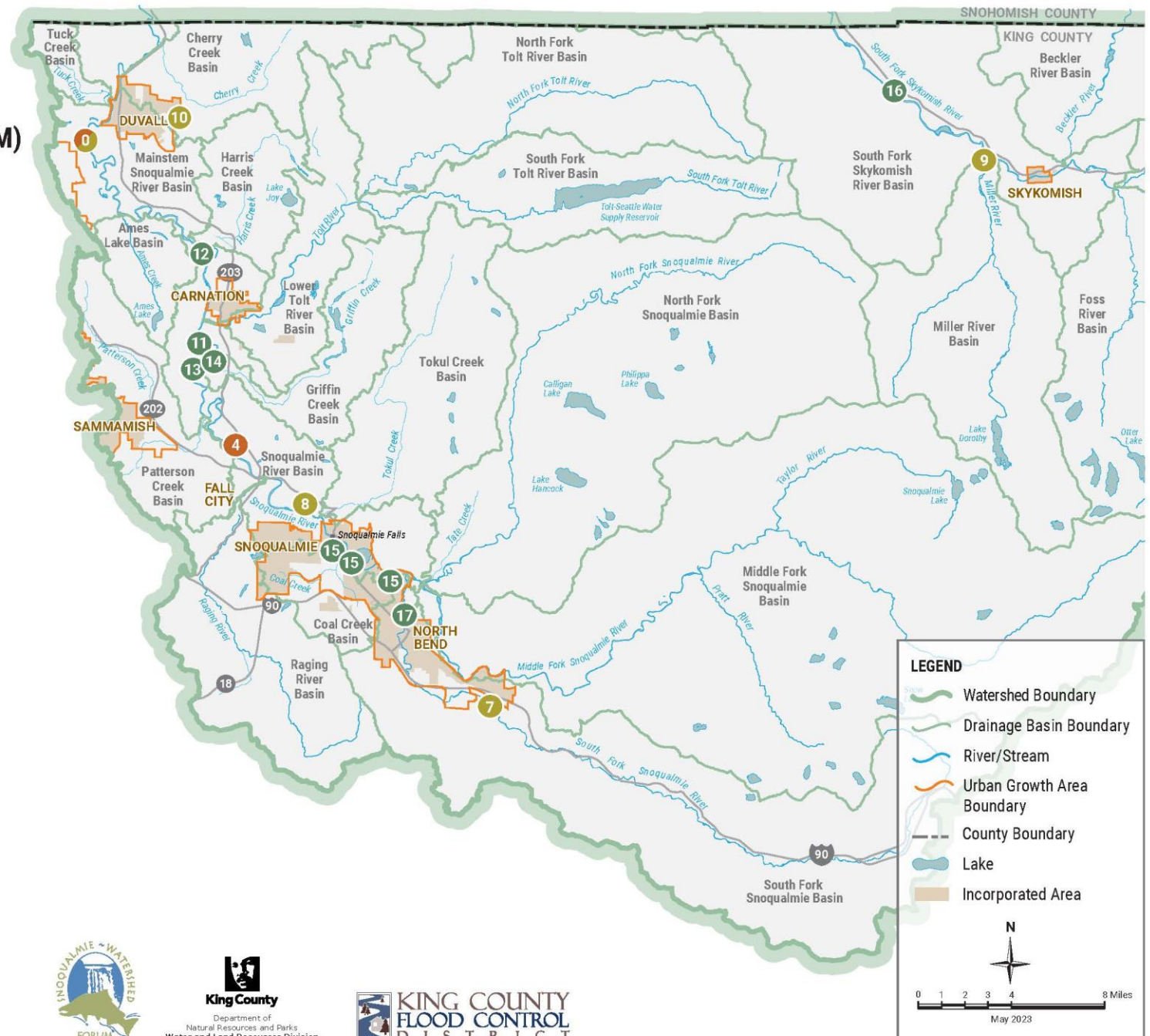
RESTORATION AND PROTECTION

- 0 2024 Snoqualmie Restoration and Project Assistance Program*
- 7 South Fork Snoqualmie River Conservation Acquisition
- 8 Fish Hatchery Road Alternatives Analysis
- 9 Lower Miller River Floodplain Restoration Design
- 10 Duvall Meadows / NE 147th PL (Unnamed Tributary to Cherry Creek) Culvert Replacement

RESTORATION-RIPARIAN

- 11 Carnation Marsh Riparian Restoration Phase II
- 12 Chinook Bend Riparian Restoration Phase II
- 13 Griffin Creek Farm West End Riparian Restoration
- 14 McKittrick Riparian Restoration
- 15 Meadowbrook Slough Phase 6 and Riparian Maintenance
- 16 South Fork Skykomish Revegetation Project
- 17 Tollgate Forest Restoration Maintenance and Planting

*Projects with multiple sites

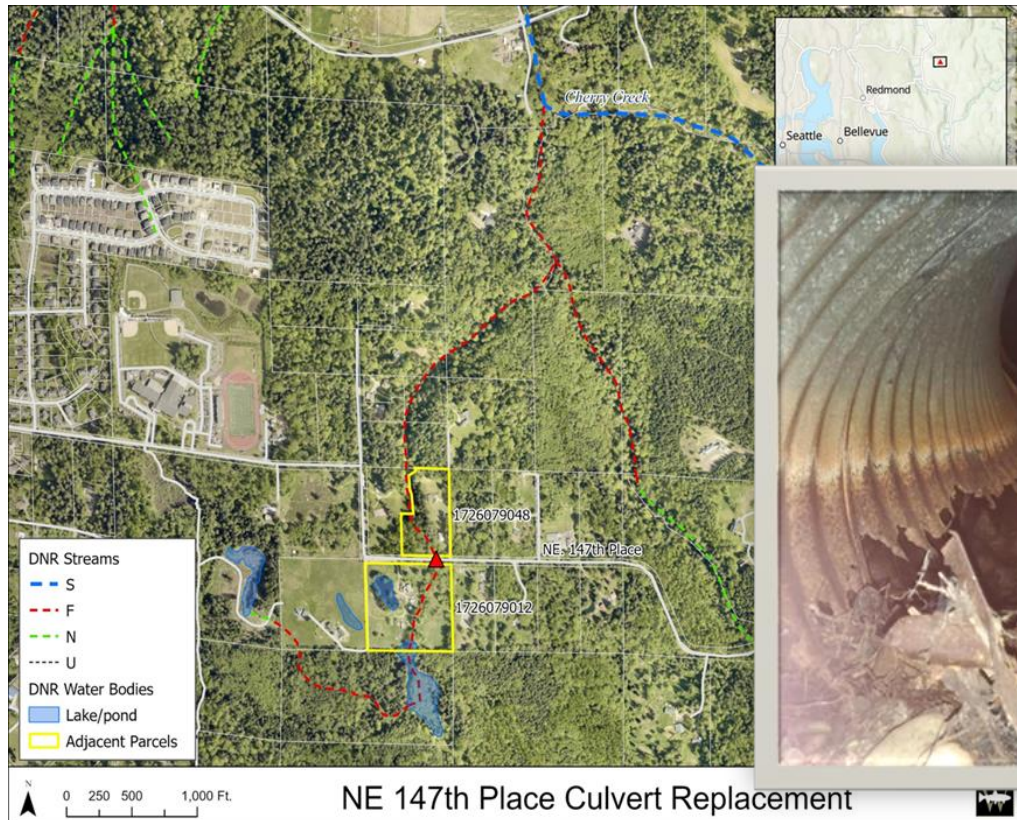




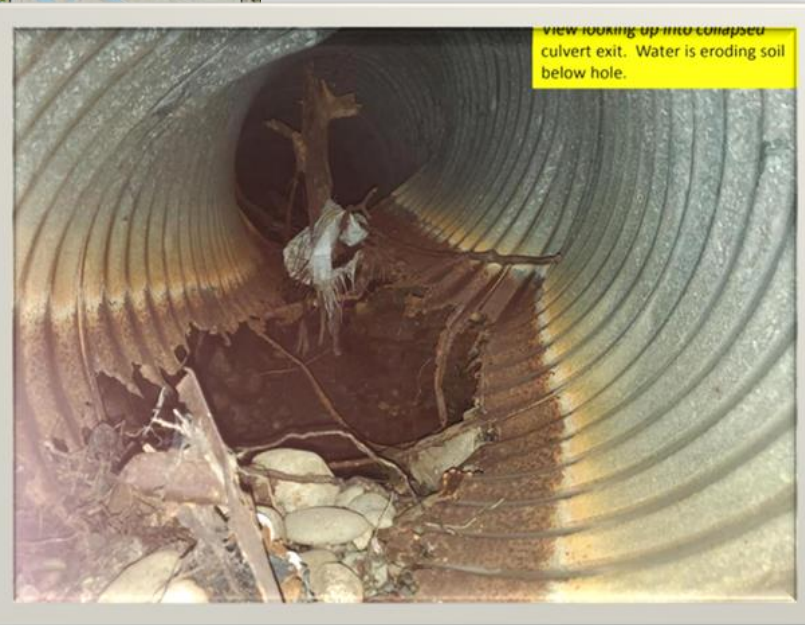
WRIA 7 Capital Projects

Duvall Meadows / NE 147th Pl Culvert Replacement

\$ 145,422 | Wild Fish Conservancy, Tulalip Tribes, Duvall Meadows RA



Goal: Replace culvert with fish passable bridge, and open access to ½ mile habitat including wetland



- Design & Permitting
- Upstream wetland access
- Tulalip, King County, Road Association partnerships

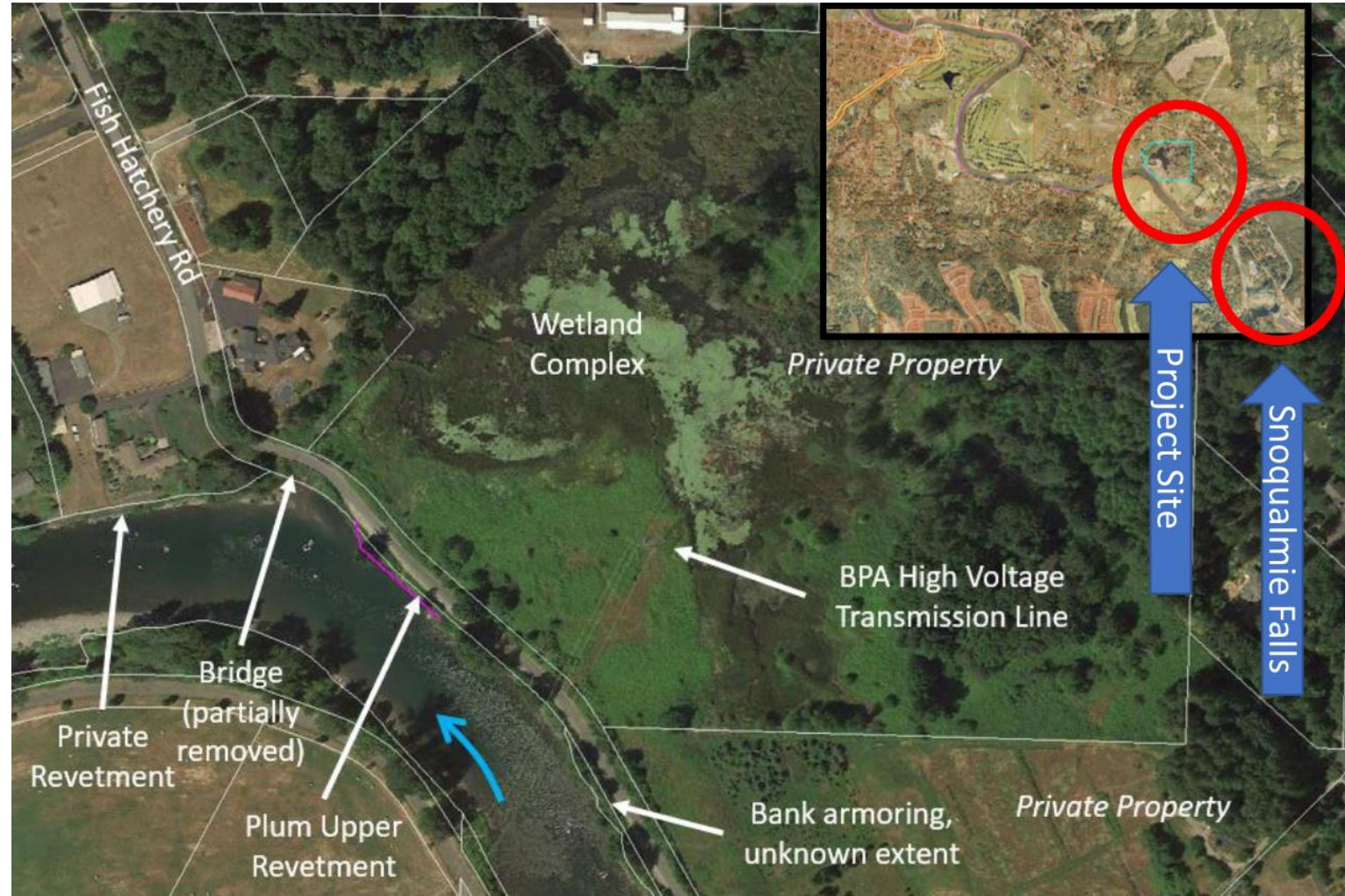


WRIA 7 Capital Projects

SE Fish Hatchery Road Alternatives Analysis

\$300,000 | King County

- Alternatives Analysis
- Between Fall City and lower falls
- Increasing up to 16 acres of floodplain wetlands function – flood storage
- 40 acres off-channel floodplain habitat
- Removing up to 2,000 ft rock revetment
- Removing invasive plants & replanting





WRIA 7 Education and Monitoring

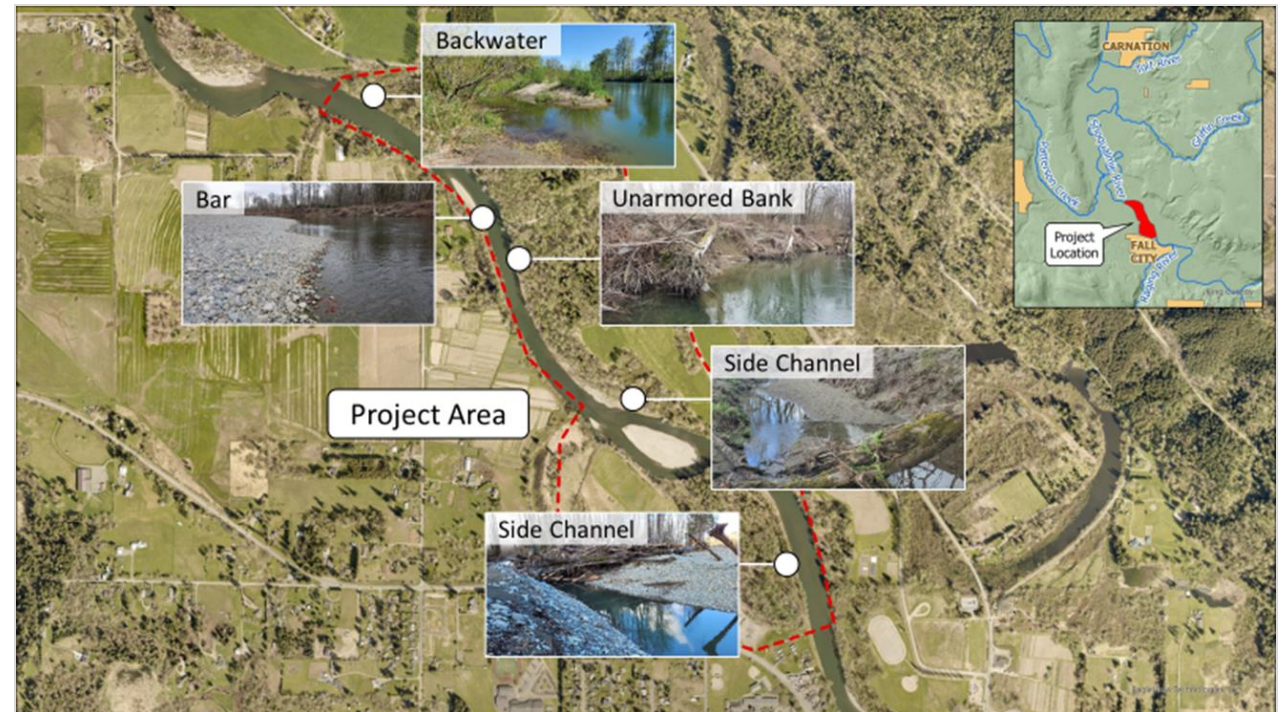
Salmon in Schools

\$38,848 | Sound Salmon Solutions



Designing habitat restoration projects to increase juvenile Chinook growth and food resources

\$118,040 | King County

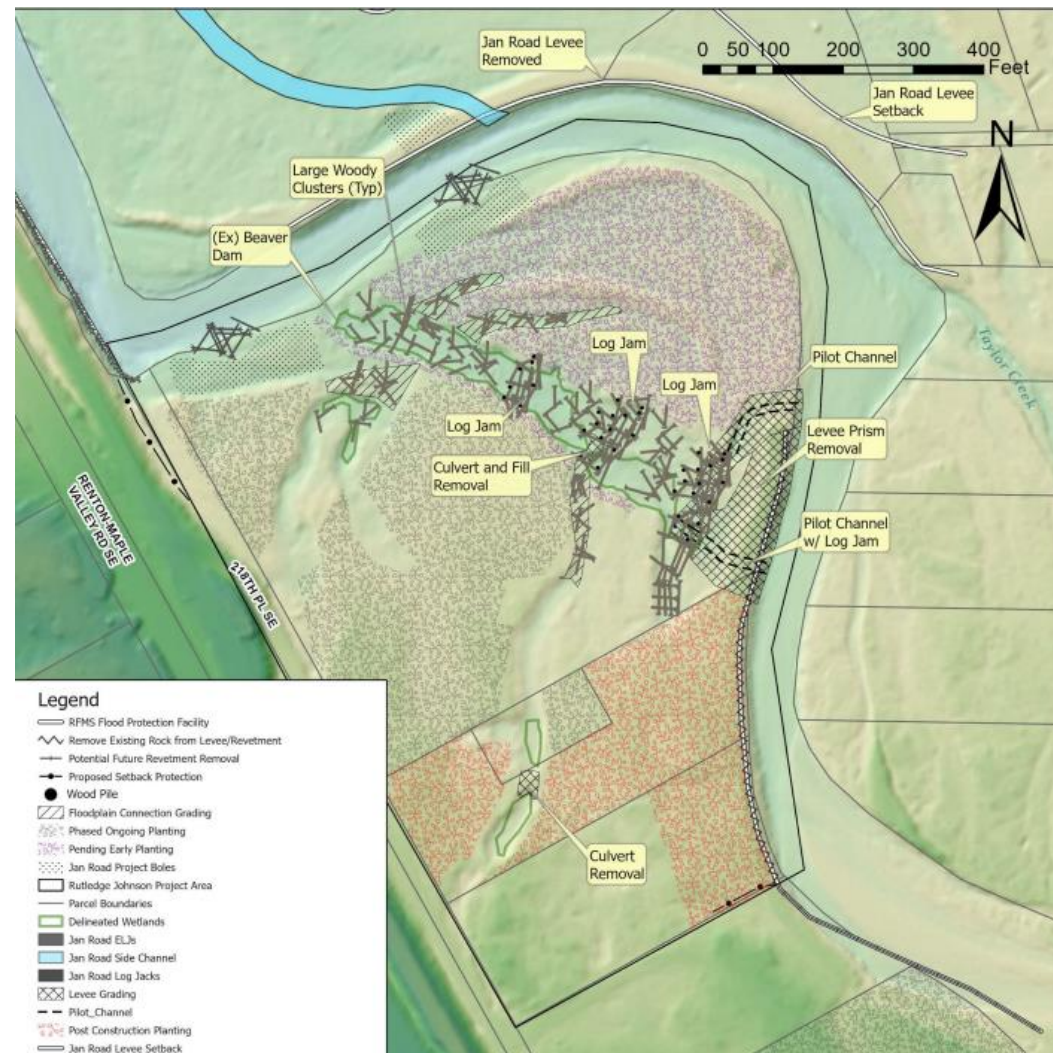




WRIA 8 Capital Projects

Cedar River Rutledge Johnson Floodplain Restoration Final Design and Implementation

\$2,012,110 | King County





WRIA 8 Riparian Habitat Projects

Sammamish River Riparian Restoration and Maintenance

\$73,122 | Orcas Inspiring Riparian Restoration





WRIA 8 Outreach and Education

Engage, Educate and Discover at Mapes Creek

\$45,000 | Rainier Beach Link 2 Lake Steering Committee



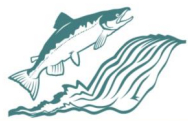


WRIA 8 Monitoring and Assessment

Lake Washington Ship Canal Roundtable – Data Gaps

\$133,160 | Long Live The Kings





Green / Duwamish & Central Puget Sound
MAKING OUR WATERSHED
FIT FOR A KING

Green/Duwamish & Central Puget Sound Watershed (WRIA 9) 2023 CWM Funding Package

- **High Priority Capital**
9 Projects / \$2.87M / 69.1%
- **Revegetation**
10 projects / \$556k / 13.4%
- **Monitoring & Research**
3 projects / \$424k / 10.2%
- Stewardship, Education & Outreach**
5 projects / \$152k / 3.7%
- Project Implementation**
1 project / \$150k / 3.6%



WRIA 9 Capital Projects

Nelsen Salmon Habitat Side Channel

\$200,000 | City of Tukwila





WRIA 9 Monitoring

Utilizing PIT Technology to Assess Juvenile Chinook Use and Survival in Lower and Middle Green River

\$154,039 | King County





Green / Duwamish & Central Puget Sound
MAKING OUR WATERSHED
FIT FOR A KING

WRIA 9 Outreach and Education

Environmental Heroes: Improving Watershed Health and Salmon Habitat Through Education and Outreach

\$50,000 | Environmental Science Center



OFFICIAL SALMON HERO

ENVIRONMENTALSCIENCECENTER.ORG

- S – Save the trees
- T – Turn off the lights
- R – Ride your bike
- E – Every poop, you scoop
- A – All natural gardening
- M – Make sure only rain down the storm drain
- S – Share what you learned!!





WRIA 10 Capital Projects

Upper White River Final Design

\$269,303 | South Puget Sound
Salmon Enhancement Group



Boise Creek Riparian Restoration

\$78,746 | King County WLRD

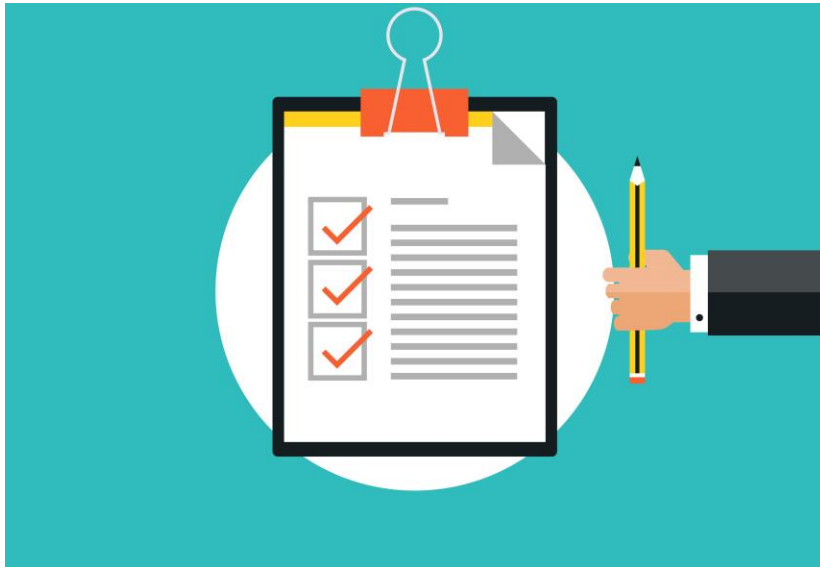




WRIA 10 Outreach & Monitoring Projects

Community Based Social Marketing

\$27,569 | King County WLRD



White River Juvenile Salmon Assessment

\$177,373 | Puyallup Tribe of Indians





CWM IS CRITICAL TO OUR COLLECTIVE EFFORTS TO RECOVER SALMON

- Over \$10.7 million in secured leverage for 2023 grants, with more on the way
- Dozens of partners engaged in local recovery efforts.

**THANK YOU
FOR YOUR
SUPPORT.**

QUESTIONS?

