

# King County Metro: Rural Services

Regional Transit Committee

June 21, 2023

# Rural Services

- Fixed-route / DART
- Vanpool, Vanshare, Community Van
- Rideshare and Park and rides
- Community Access Transit (CAT)

Defining “rural” – all areas outside of the Urban Growth Boundary (mainly city boundaries)



# Rural in Service Guidelines

New in 2021:

- Rural Routes – 35% of route is outside Urban Growth Boundary

Rural/DART routes evaluated separately

Service reductions

- Relative impacts
- Preserve last connections

King County Metro

## Service Guidelines

November 17, 2021








# Map of Rural Area

## Rural Transit

Urban Growth Boundary

 Rural King County     Urban King County

Currently operating transit routes that travel through rural areas

 RT Non-rural route     RT DART route  
 RT Rural route\*     RT Snoqualmie Valley Transportation  
 King County Water Taxi

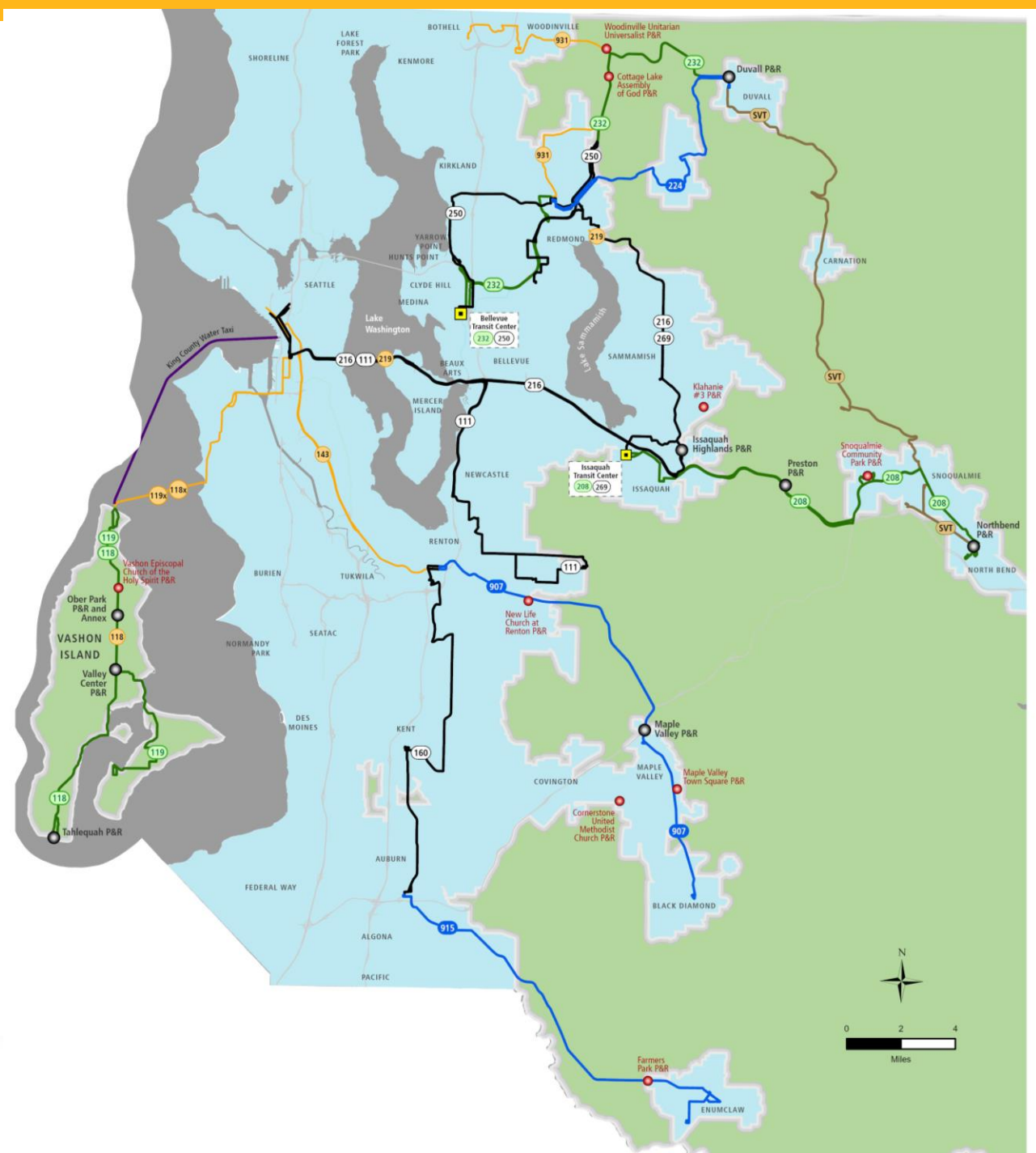
 RT Currently suspended transit routes that travel through rural areas

Park&Ride lots within a quarter mile of rural areas and or serving Rural Routes

 Permanent     Leased

 Transit Center

\*Route with at least 35% of service outside the Urban Growth Boundary



# Connecting with Rural Communities

## Network transfer points

- Auburn Sounder Station - DART 915
- Kent Sounder Station - Route 168
- Renton Transit Center - DART 907
- North Bend – SVT 629/THD/Route 208
- Duvall – SVT 629/DART 224
- Issaquah Transit Center - Route 208
- Redmond Transit Center - DART 224
- King County Water Taxi – Route 118/119

## Partnerships

- King County Mobility Coalition
- Trailhead Direct
- Community Van
- Metro Mobility Projects



# Rideshare and Park and Rides

- 18 Park and Rides within ¼ mile of rural areas
- Park and Rides are an important resource for accessing transit and sharing rides
- [RideshareOnline.com](https://www.RideshareOnline.com) is a free, online self-serve tool



# Vanpool and Vanshare

- Save money
- Hybrid-office friendly
- Variable fare
- Start small
- Vanpool matching

<https://www.rideshareonline.com/>





## Community Van

- Duvall, Carnation, Vashon, Woodinville
- Partnership with KC Parks and Environmental Coalition of South Seattle (ECOSS)
- Local group trips to events and activities
- Medical appointments
- Food bank trips and meal deliveries
- Youth trips for sports, scout troops, after school programs





# Community Access Transit (CAT)

For older adults, people with disabilities and/or low-income populations:

- Snoqualmie Valley Transportation
- Rainier Foothills Wellness Foundation Care Van
- Town of Skykomish



# Future changes – East Link Connections – Link 2 Line

Proposed improvements:

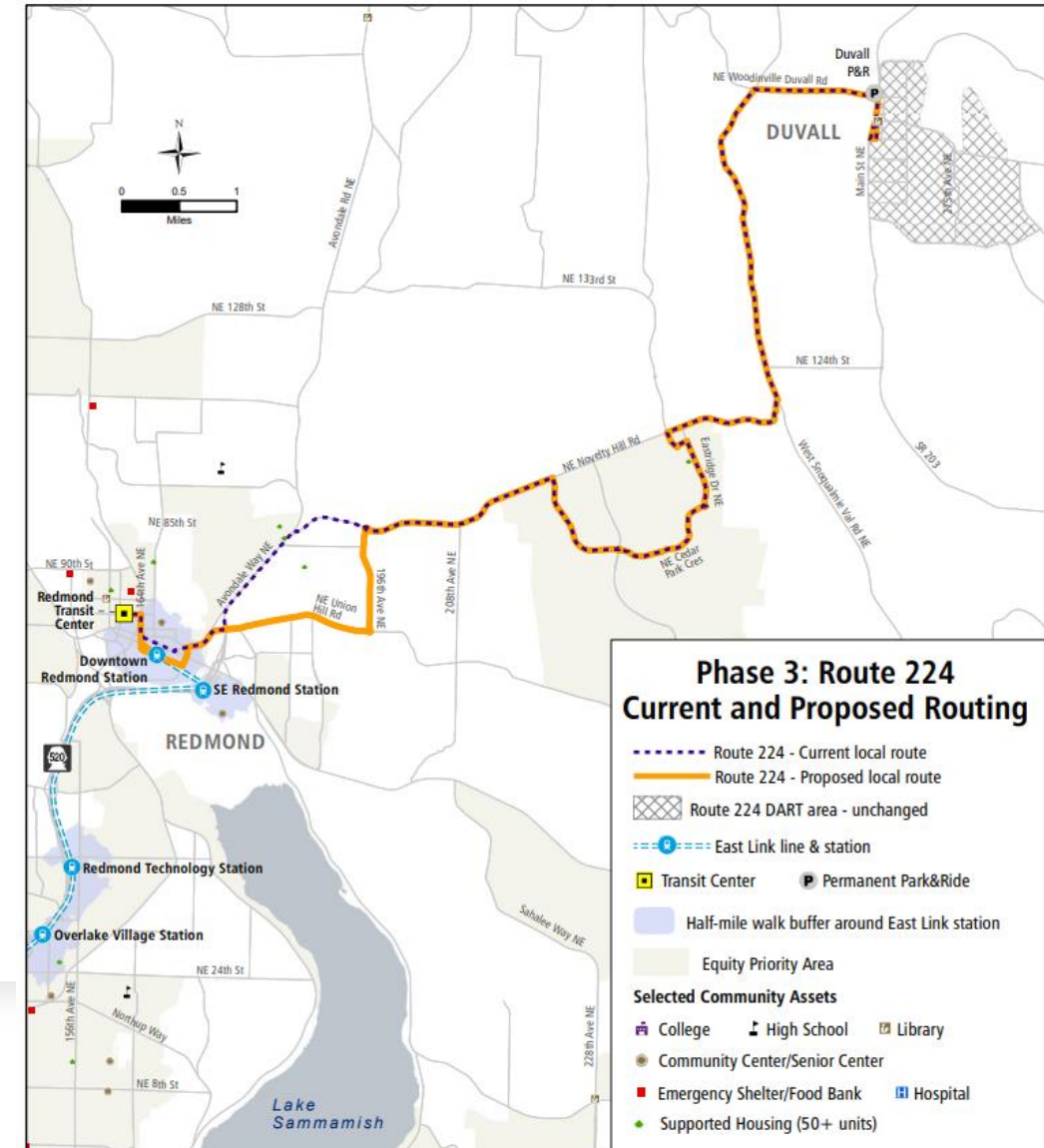
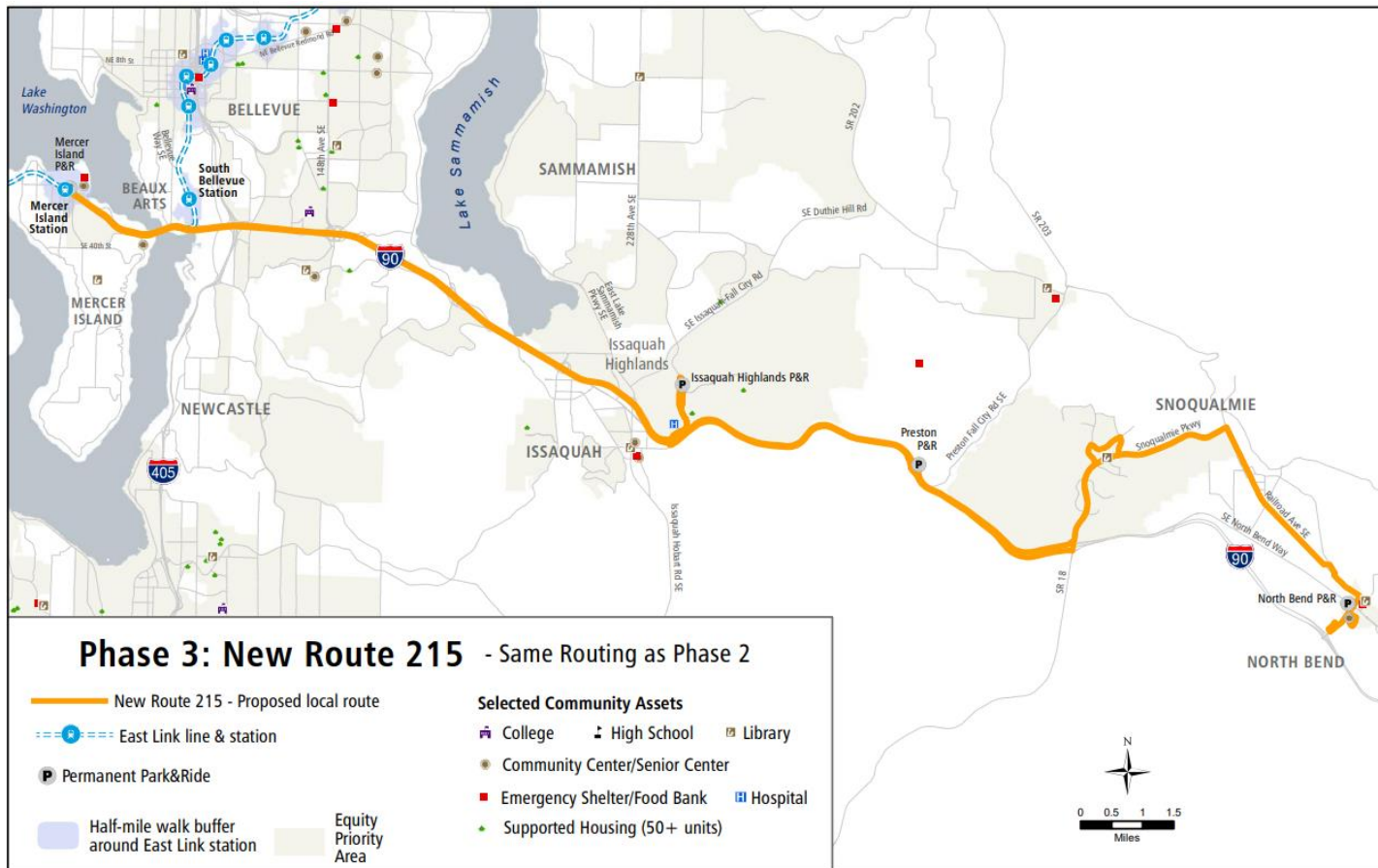
- More frequency
- Connections to Link light rail
- New routes connecting new places



**Thank you!**



## Future changes – East Link Connections – Link 2 Line



# Future changes – East Link Connections – Link 2 Line

