

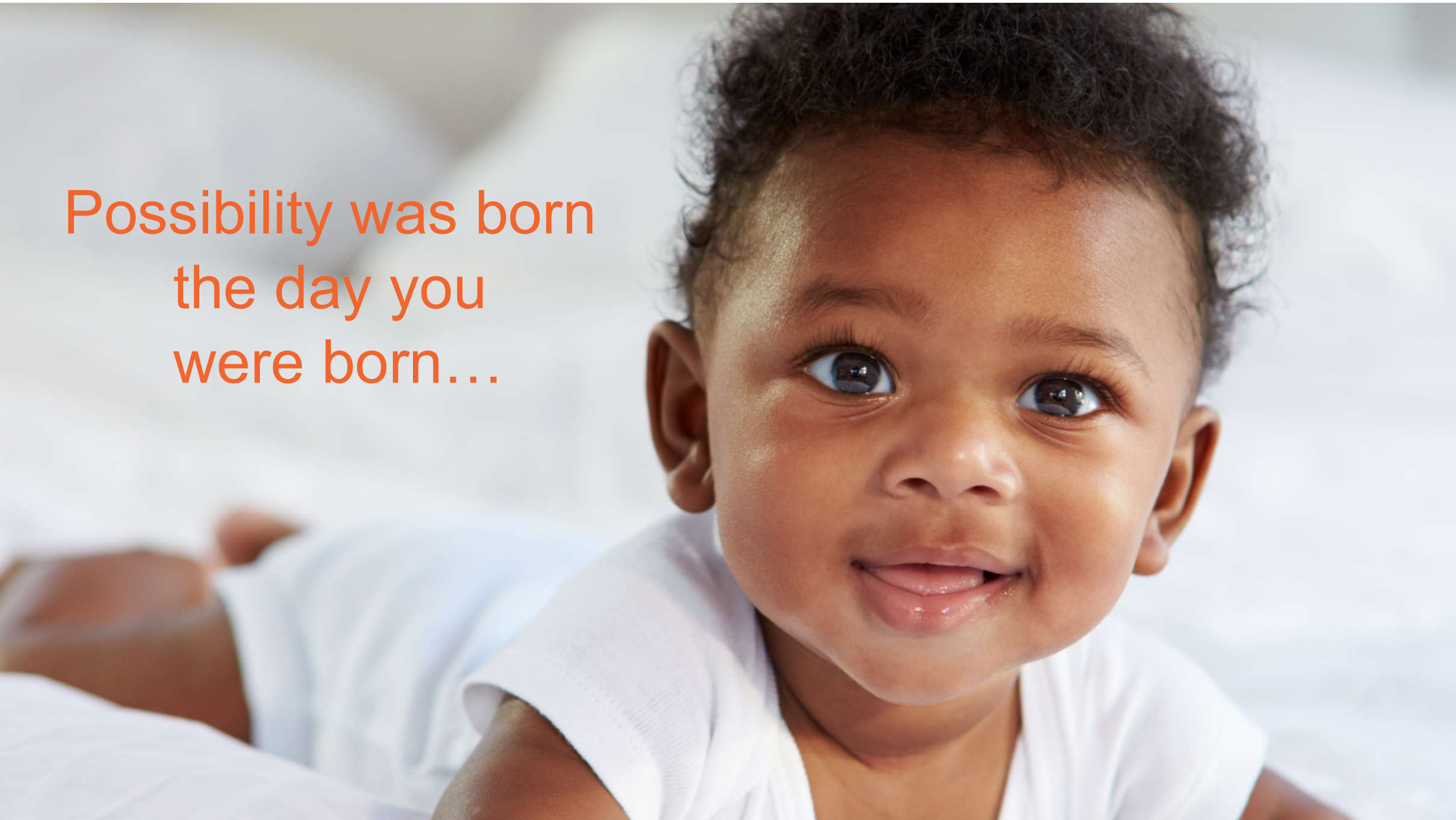
Public Health and Best Starts for Kids

Infant Mortality Prevention

Eva Wong, PhD., Michelle Sarju, MSW



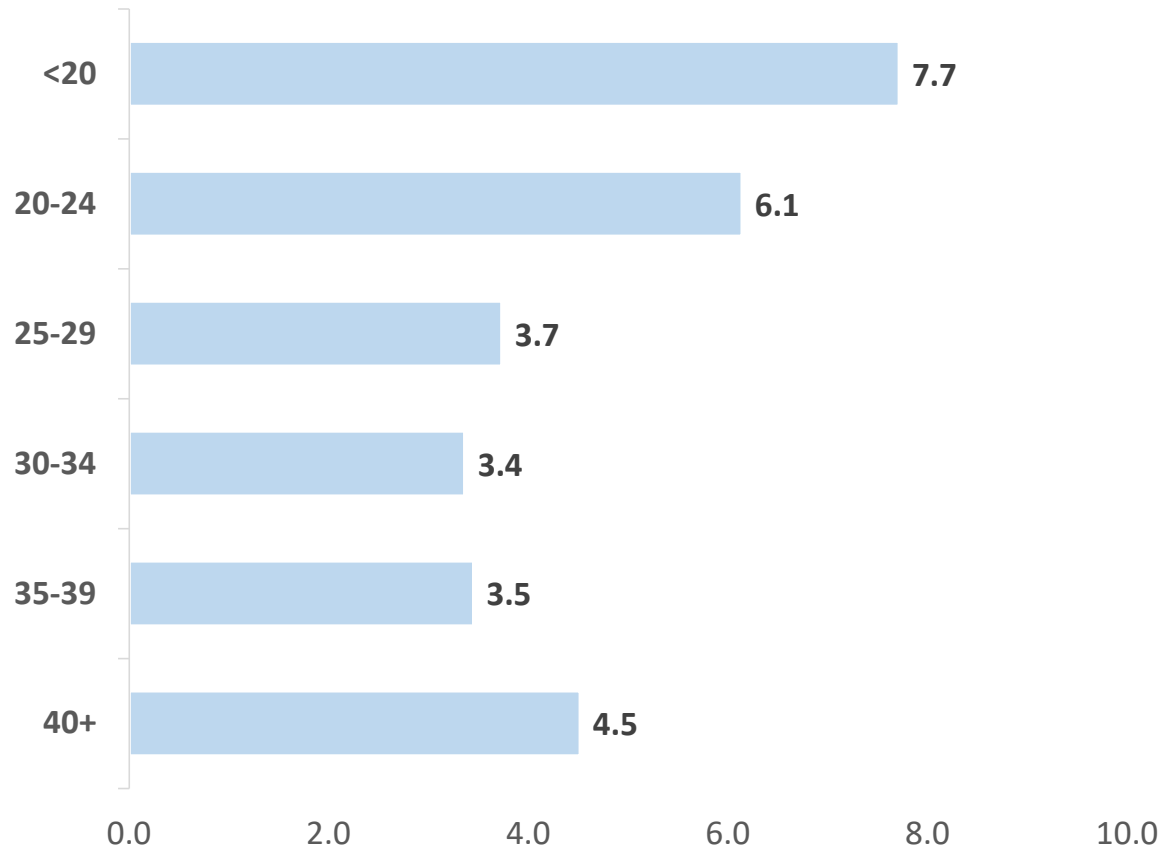
Possibility was born
the day you
were born...



● King County by the Numbers

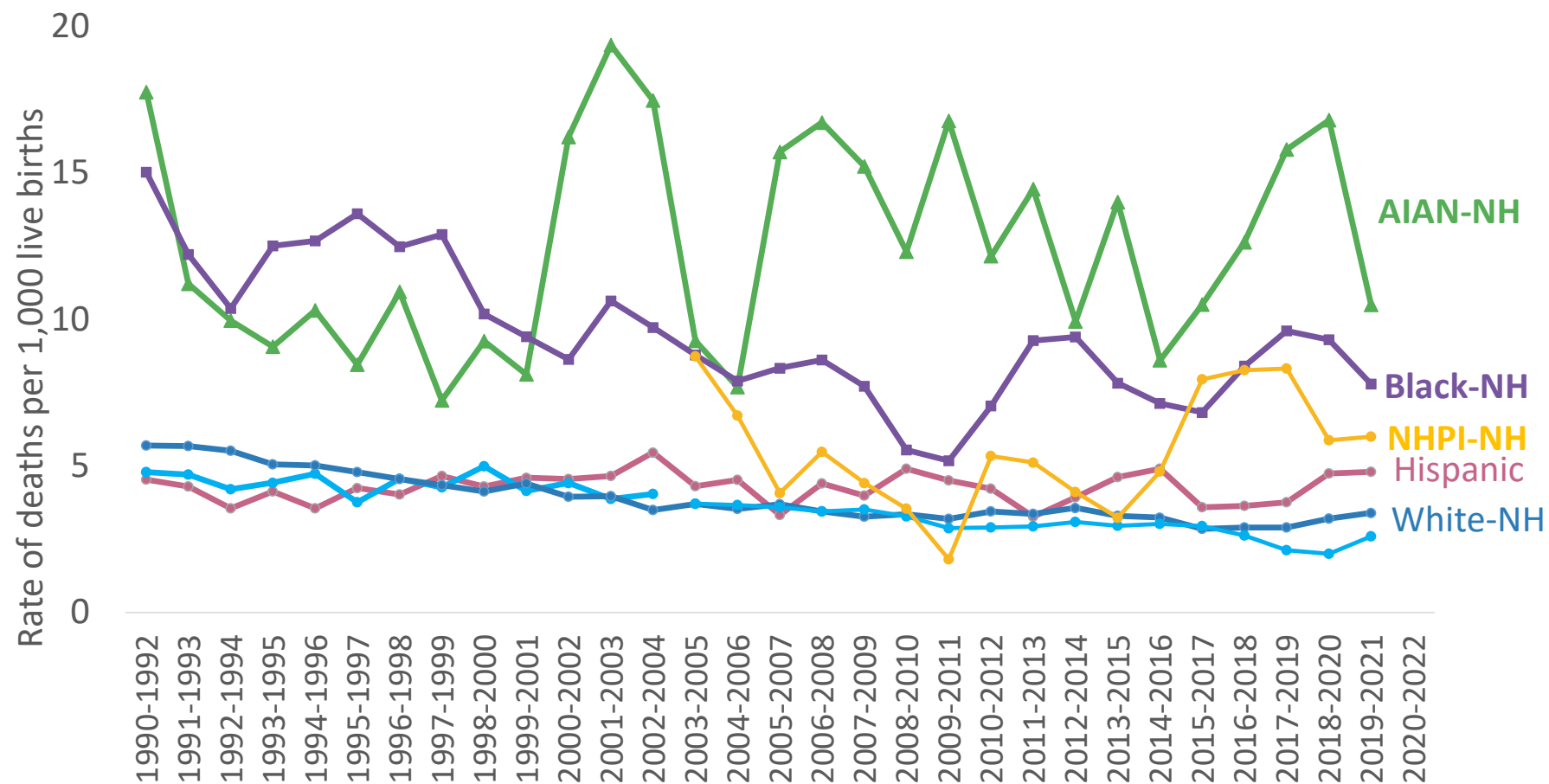
- Approximately **25,000** babies are born every year to King County residents
- Every year, approximately **100** King County babies die before their first birthday

Higher Rate of Infant Mortality among Mothers under 25 Year of Age in King County



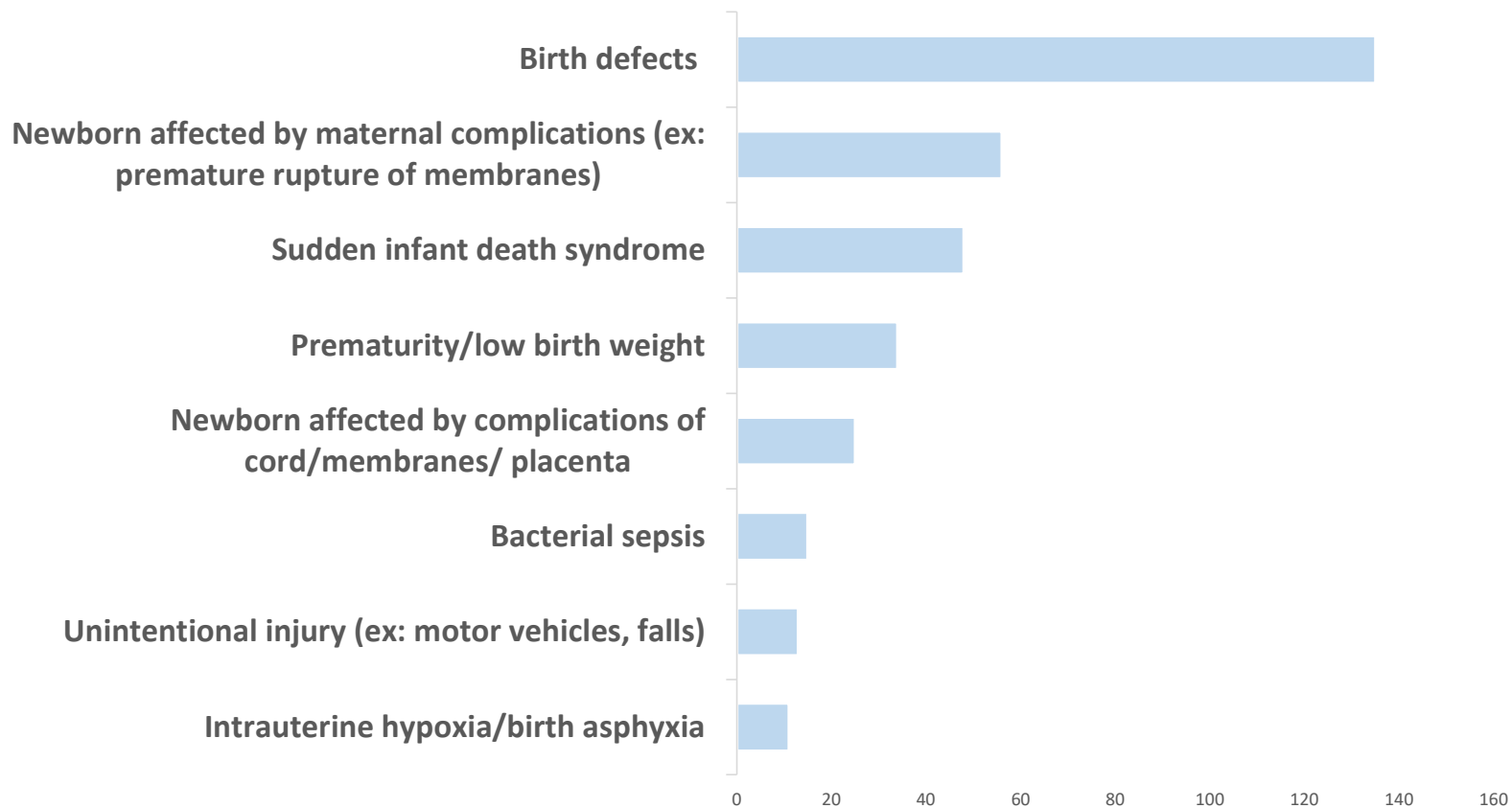
Infant mortality rate: deaths per 1000 live births; data are from 2016-2020; 5-year combined.

Infant Mortality Inequities by Race in King County



Infant mortality rate: deaths per 1000 live births

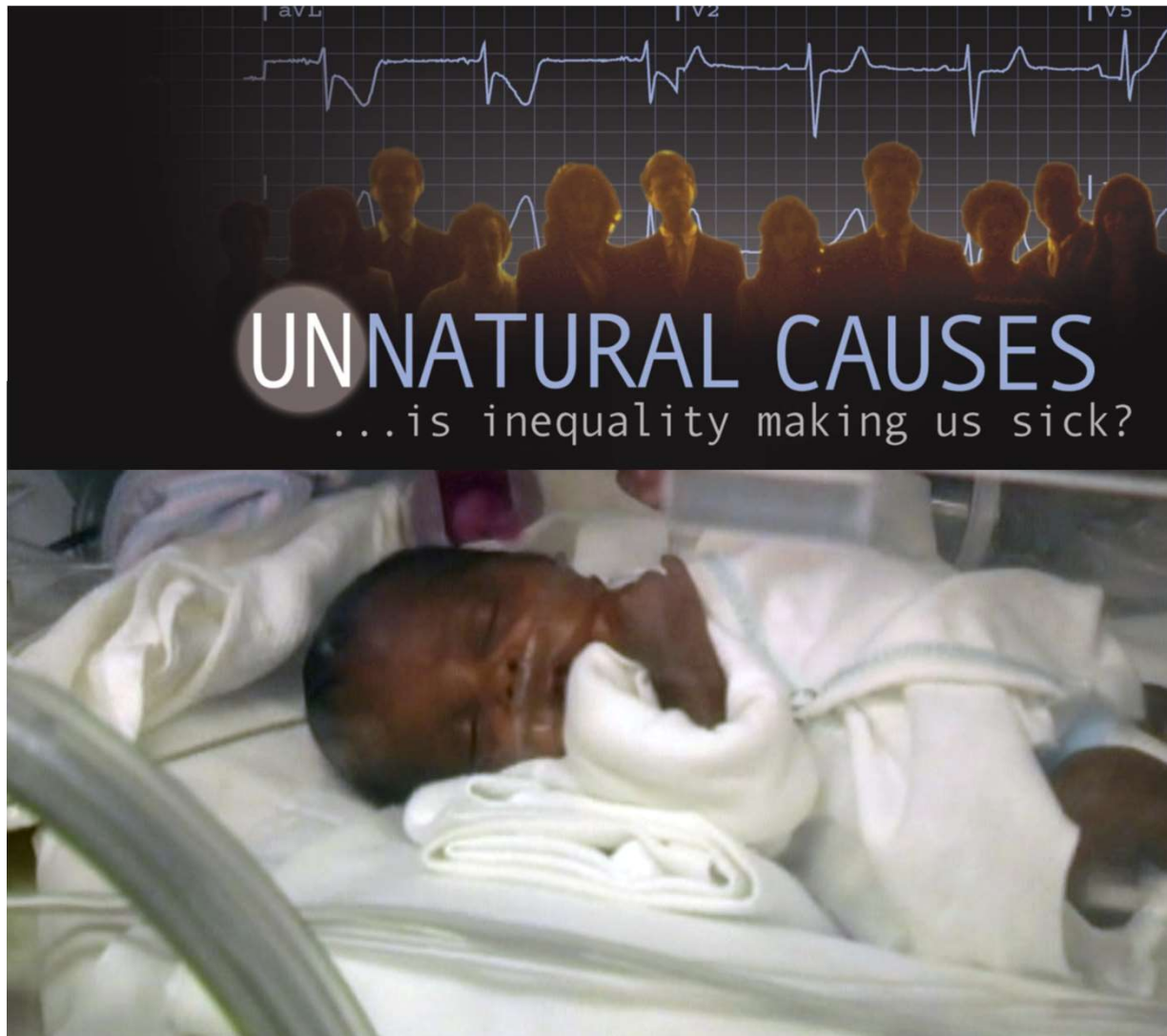
Leading Causes of Infant Mortality in King County



Data are from 2016-2020; 5-year combined; causes with <10 events not shown.



<https://unnaturalcauses.org/>



<https://unnaturalcauses.org/>

“

The chronic stress of racism can become embedded in the body, taking a heavy toll... before they leave the womb.

”

● King County's Role Reducing Infant Mortality

Principles



Best Starts for Kids Investments



- Child Care Subsidy and Workforce Pilot Project
- Public Health Services for New Parents and Babies
- Home-Based Services
- Universal Developmental Screening
- Early Support for Infants and Toddlers (ESIT)
- Community-Based and Peer Support for Parents
- Child Care Health Consultation
- Workforce Development
- Infant Mental Health
- Help Me Grow

Child Death Review Recommendations (May 2022 SIDS/SUID Review)

- The Child Mortality Prevention Program (held by Public Health) reviews *Sudden Infant Death Syndrome/Sudden Unexpected Infant Death (SIDS/SUID)* cases.

Partners include:

- WA State DCYF • Seattle Children's Hospital • NW Infant Survival SIDS Alliance
- Multiple healthcare and hospital partners (including area NICUs – Swedish, UW)
- We are proactively identifying and implementing policy and program improvements that can be made to better partner with families.

Recommendations:

- Expand infant safety protocol assessments
- Increase family engagement related to safe sleep messaging
- Promote anti-bias and anti-racist training opportunities within organizations
- Address needs around housing instability, multiple stressors for families (financial, baby fussiness, and more)



PHSKC: Community Health Services (CHS) Division

CHS Parent-Child Health Programs

Parent-Child Health Programs (PCH): Access to screening, health education, breastfeeding support, nutritious foods, and referrals.

Kids Plus: Case management program for families experiencing homelessness with a specific focus on medical and behavioral health challenges.

Infant Mortality Prevention Network (IMPN): Community-defined direct client services focused on populations with the highest risk of infant mortality. Community-based organizations funded to provide services.

Nurse Family Partnership: A home visiting program implemented by specially-trained nurses who work with pregnant, first-time parents starting in early pregnancy through the child's second birthday.

PHSKC: Community Health Services Division (CHS)

CHS Parent-Child Health Programs

Family Ways: A new culturally relevant, culturally versatile, high support Maternal/Parent-child health program currently serving the following focus populations:

- African American
- American Indian/Alaska Native
- Native Hawaiian/Pacific Islander



Opportunities

- Work to **make state and federal MEDICAID funding more flexible**
- **Keeping focus on our babies and our children as they grow into youth and young adults**



Questions?