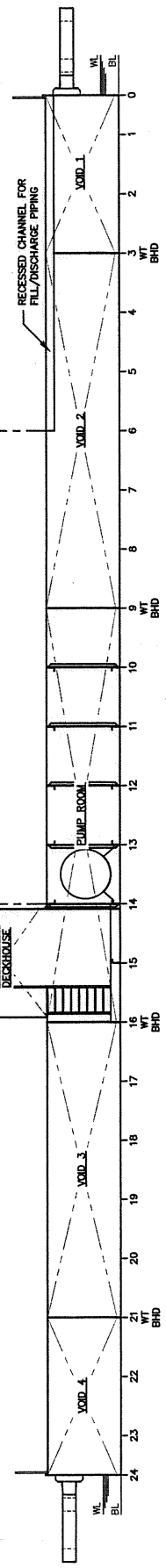


PLAN 6-A
HOLD PLAN
3/32"=1'-0"

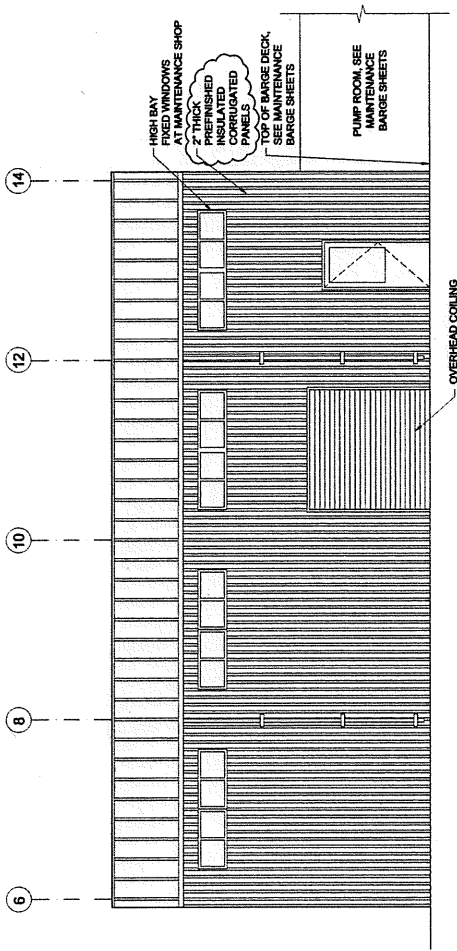
OUTLINE OF WORKSHOP BUILDING
(REF 10) (TYP)

VENT COAMING

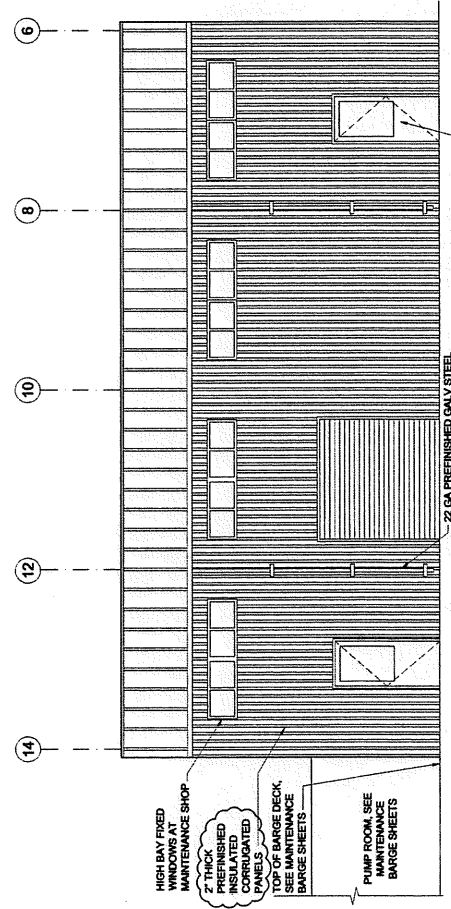


ELEVATION 6-B
INBOARD PROFILE
3/32"=1'-0"

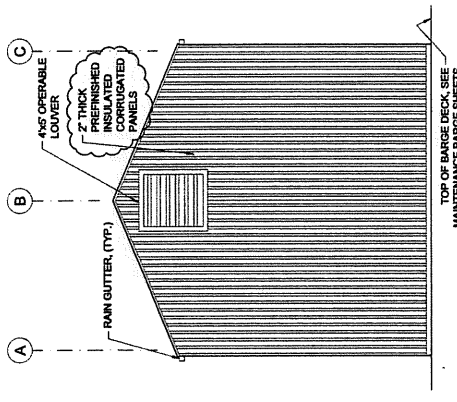
FIELD BOOK:		<p>King County INDEX</p>	<p>SHEET 6 OF 51 SHEETS SA.03</p>
SURVEYED:			
SURVEY BASE MAP:			
DESIGN ENTERED:			
CHECKED:			
SUPERVISOR:		<p>KING COUNTY DEPARTMENT OF TRANSPORTATION MARINE DIVISION MAINTENANCE AND MOORAGE BARGE PROJECT BARGE GENERAL ARRANGEMENT HOLD PLAN AND INBOARD PROFILE</p>	
		<p>FED. AID No. WA-95-X020-00 PROJECT No. 359120</p>	<p>THIS PLAN SET IS APPROVED FOR CONSTRUCTION SCOTT DANIS MARINE DIVISION DIRECTOR</p>
		<p>CH2MHILL</p>	<p>THE GLOSTEN ASSOCIATES Consulting Engineers Serving the Marine Community</p>
		<p>DATE</p>	<p>BY</p>
		<p>REVISION</p>	<p>NO.</p>



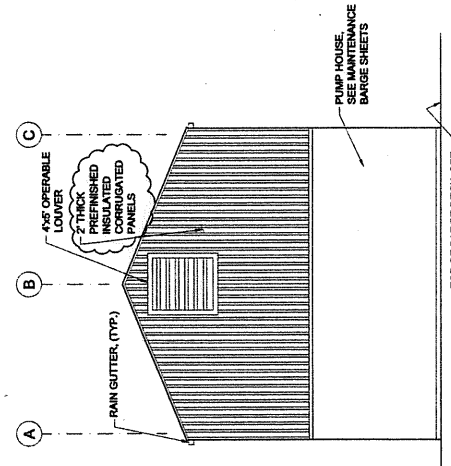
NORTH ELEVATION



SOUTH ELEVATION



EAST ELEVATION



WEST ELEVATION

FIELD BOOK:	
SURVEYED:	
DESIGNED:	DCC
CHECKED:	DRP
SUPERVISOR:	
DATE:	
BY:	
REVISION:	