



---

Metropolitan King County Council

**CITIZEN WORKSHOPS ON  
COUNTY BUDGET PRIORITIES  
APPENDIX**

February-April 2007

---

**ER**  
**ELWAY RESEARCH, INC.**



**FLT** Consulting, Inc.



King County Council  
**Budget Priority Workshops**  
**February-April 2007**

This is the appendix to the February-April 2007 report on the Budget Workshops conducted by Elway Research. The appendix provides further detail on the data collected, including the workshop script, transcripts, and data crosstabulation tables.

The appendix is organized as follows:

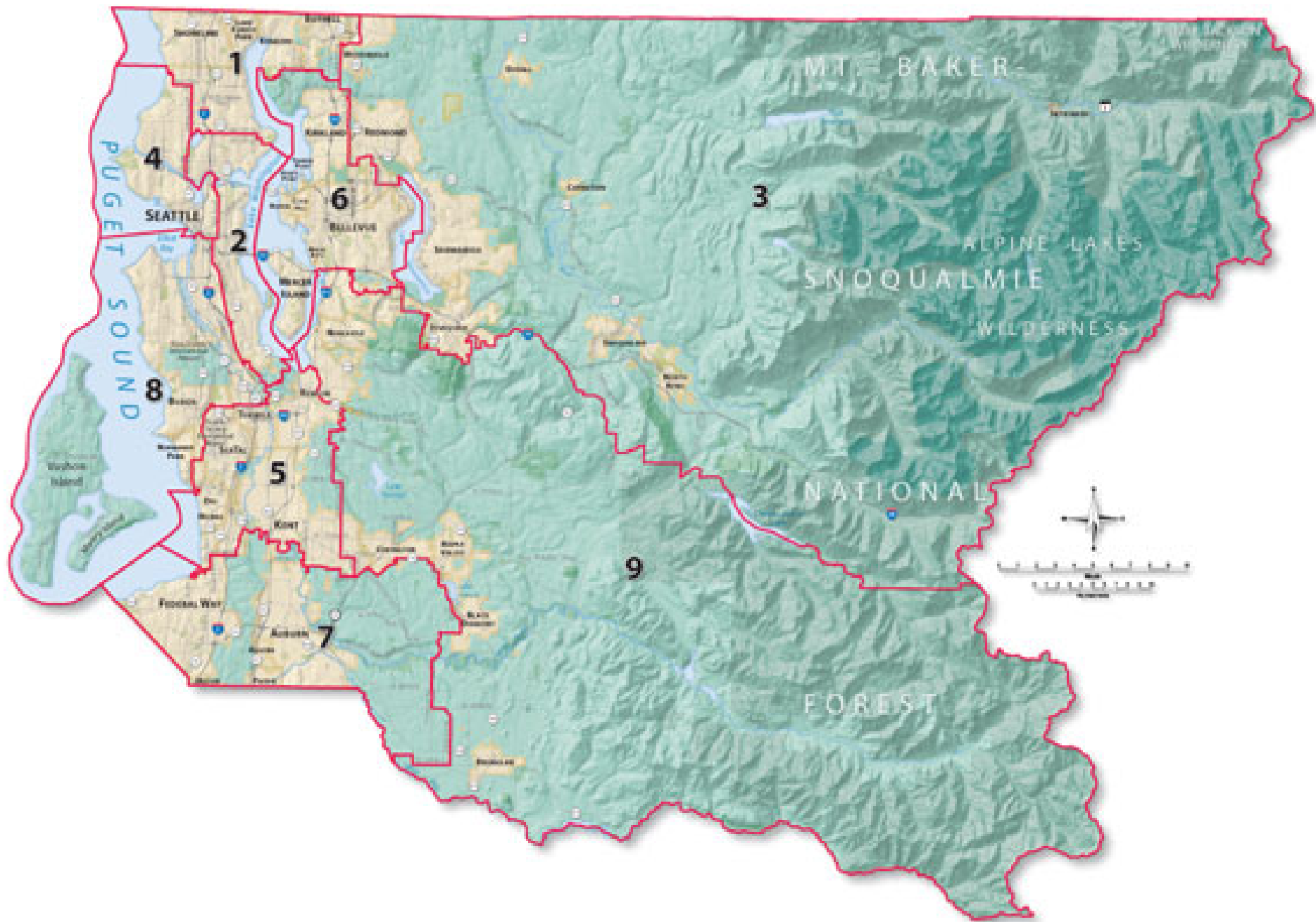
1. Workshop Script & Charts .....	1
2. District 5 & 7 Transcript .....	29
3. District 1 & 4 Transcript .....	40
4. District 3 & 6 Transcript .....	50
5. District 2 & 8 Transcript .....	62
6. District 9 Transcript .....	71
7. Forum 1 Transcript .....	82
8. Forum 2 Transcript .....	96
9. Online Survey Comments .....	111
10. Data Crosstabulation Tables .....	150



# AGENDA

---

- Welcome/Orientation**
- Who Is Here**
- County Services -Your Priorities**
- County Budget**
- How Is County Doing?**





# Who is Here

---

**Which Came First:**

Chicken

Egg

**What is your gender**

Male

Female

**Is your cell phone:**

On

Off

Not with me

Don't have a cell phone

**Where do you live:**

Inside the city limits of a Town or City

Unincorporated King County

**How old are you?**

18-35

36-50

51-64

65+

**Which of these best describes your household**

Single, No Children at Home

Couple, No Children at Home

Single, Children at Home

Couple, Children at Home

**Do you or anyone in your household:**

Commute to a job in the community where I live

Commute to a job in another part of the county

Commute to a job outside King County

Retired / Not working

**How much attention do you pay to county gov't? Do you follow it:**

VERY CLOSELY 1....2....3....4....5....6 NOT AT ALL



# What Does King County Do? Regional--Throughout County

---

## **LAW, SAFETY & JUSTICE**

- Automated Fingerprint Identification System
- 911 Operations
- Emergency Management Services (e.g. earthquakes)
- Emergency Medical Services (e.g. Medic One)
- Jails & Rehabilitation
- Juvenile Services
- Prosecutors and Public Defense
- Court Services (Superior)
- Sheriff Services (regional)

## **HEALTH & HUMAN SERVICES**

- Children and Family Services
- Harborview Medical Center
- Coroner
- Public Health
- Senior Services

## **GENERAL GOVERNMENT**

- Assessor
- Auditor
- Records and Elections

## **TRANSPORTATION & UTILITIES**

- Metro Transit Ombudsman
- Solid Waste
- Wastewater treatment

## **PARKS & RECREATION**

- Open Space
- Parks and Trails (regional)



# What Does King County Do? Local--Unincorporated/Contract Cities:

---

## **LAW, SAFETY & JUSTICE**

- Police Service (Sheriff Deputies)
- Animal Control
- Prosecutors and Public Defense
- Court Services (District)

## **PLANNING & ECONOMIC DEVELOPMENT**

- Building permits & Development Services
- Hearing Examiner
- Code Enforcement

## **TRANSPORTATION**

- Roads
- Sidewalks & Street Lights

## **OTHER**

- Parks & Recreation
- Children & Family Services



## What King County **CANNOT** Do:

---

- Schools and Education
- Libraries
- Fire Suppression
- Provide Drinkable Water
- Provide Electricity
- Provide Cable Communications
- Provide Phone Services





## What King County **CANNOT** Do:

---

- Business and Residential Zoning in Cities
- Maintain State Highways
- Maintain Federal Highways
- Repair & Maintain Streets in Cities
- Pick-up Garbage
- Provide Natural Gas
- Sound Transit



# Priority Services

---

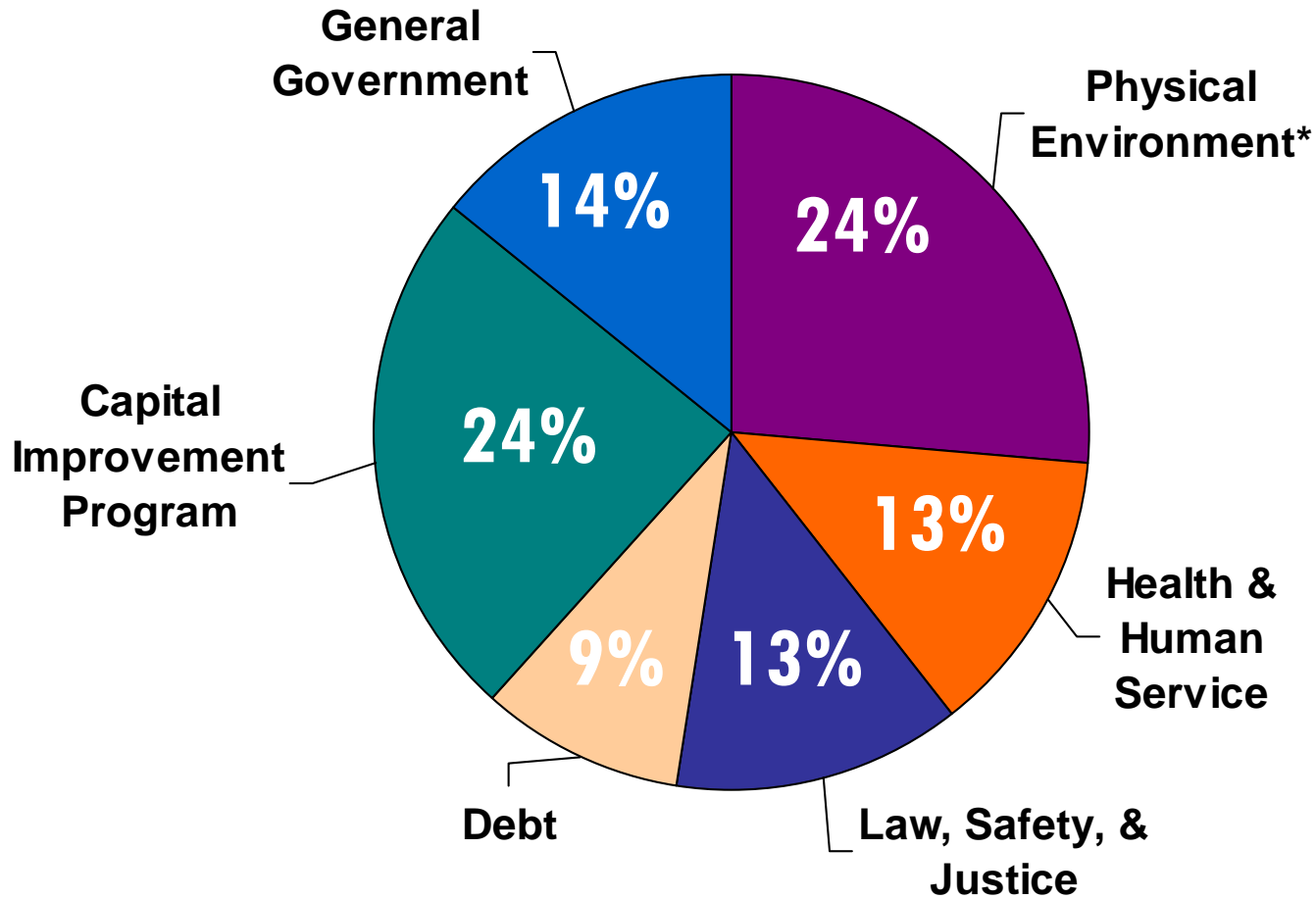
Of the program categories King County provides, which would you say is the Top Priority?

- 1. Law, Safety & Justice**
- 2. Health & Human Services**
- 3. Transportation**
- 4. Parks & Recreation**
- 5. Planning and Economic Development**
- 6. General Government**



# 2007 King County Expenditures

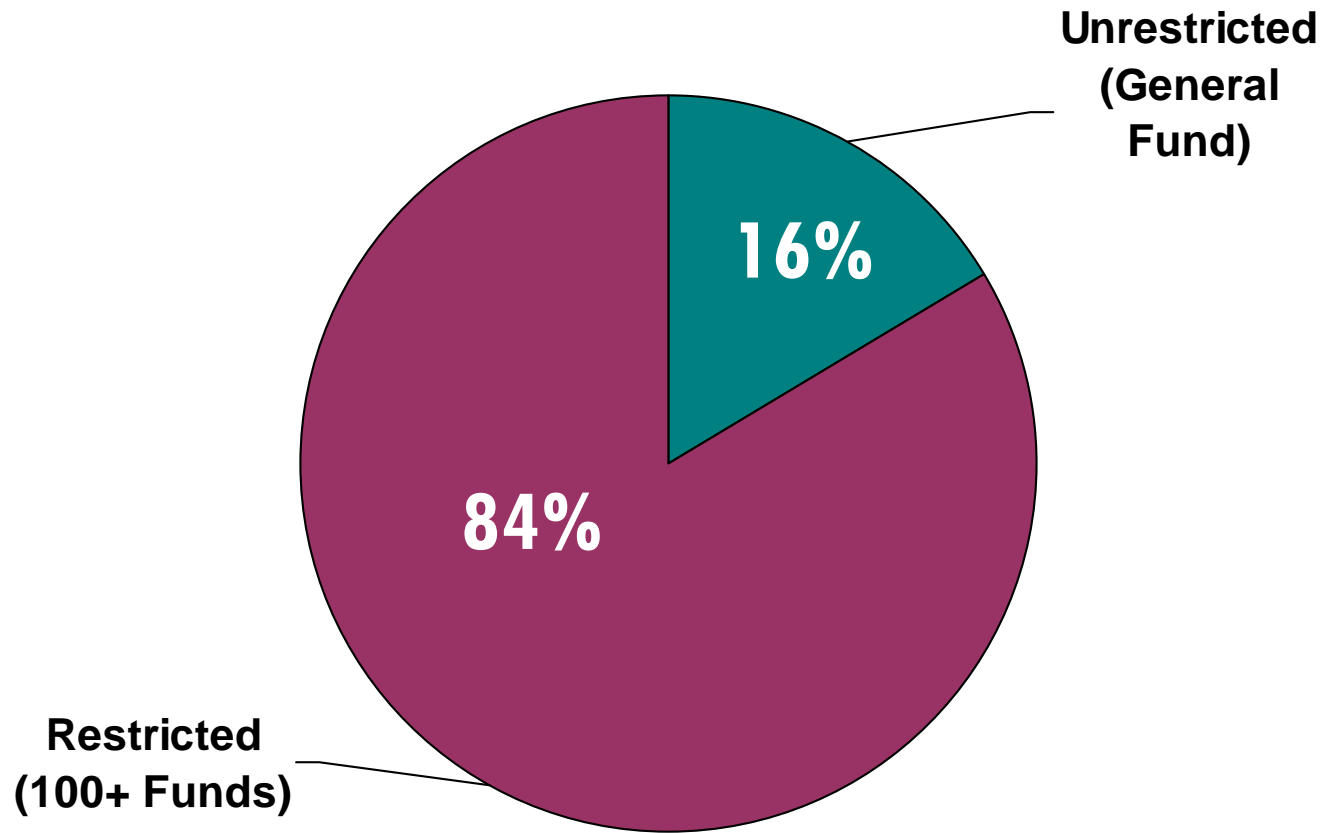
\$3.86 billion



\* e.g. Natural Resources, Parks and Wastewater



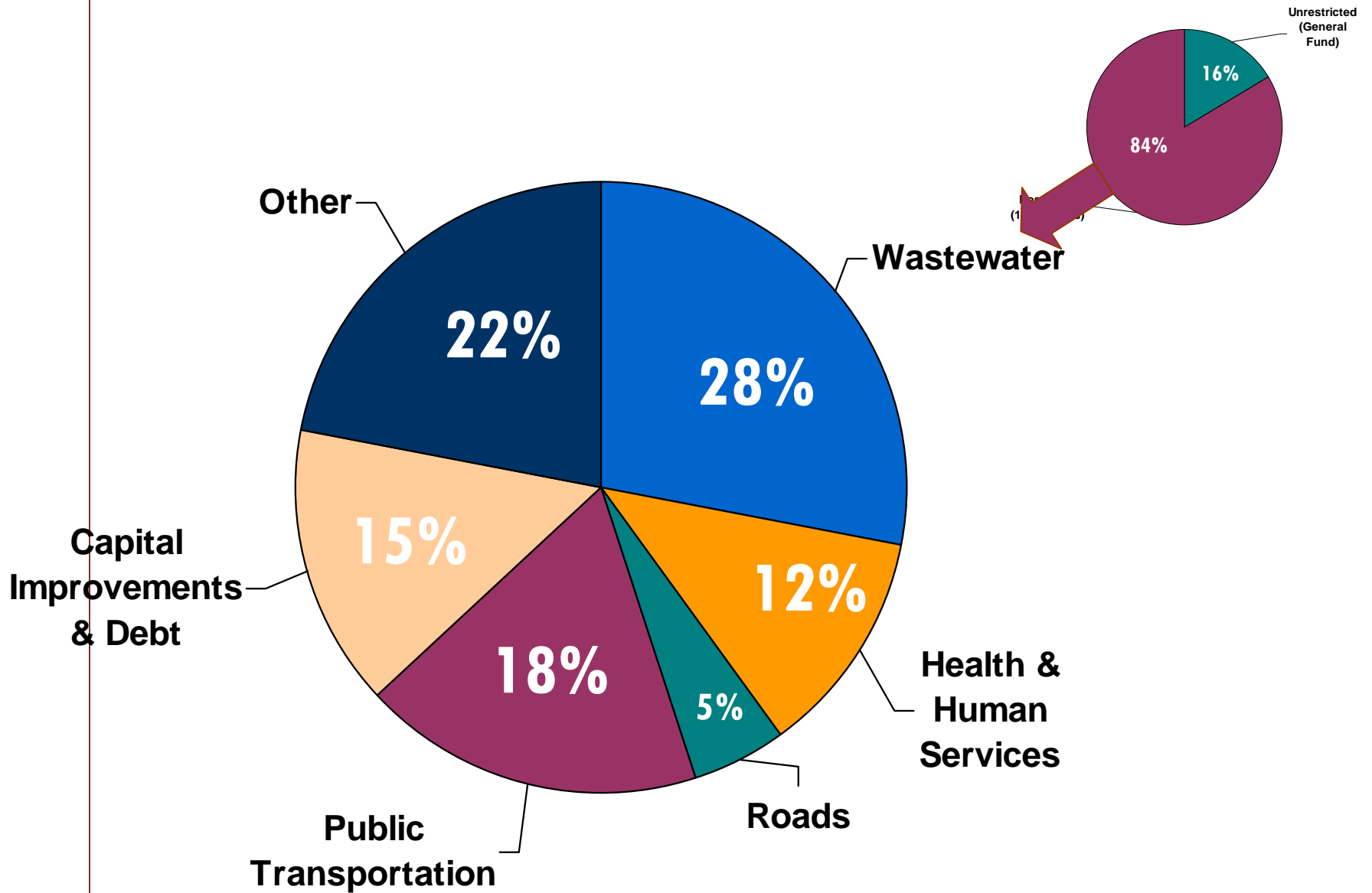
# County Budget Total = \$3.86 Billion Split into Funds



Note: Restricted funds cannot be moved to fund other projects.

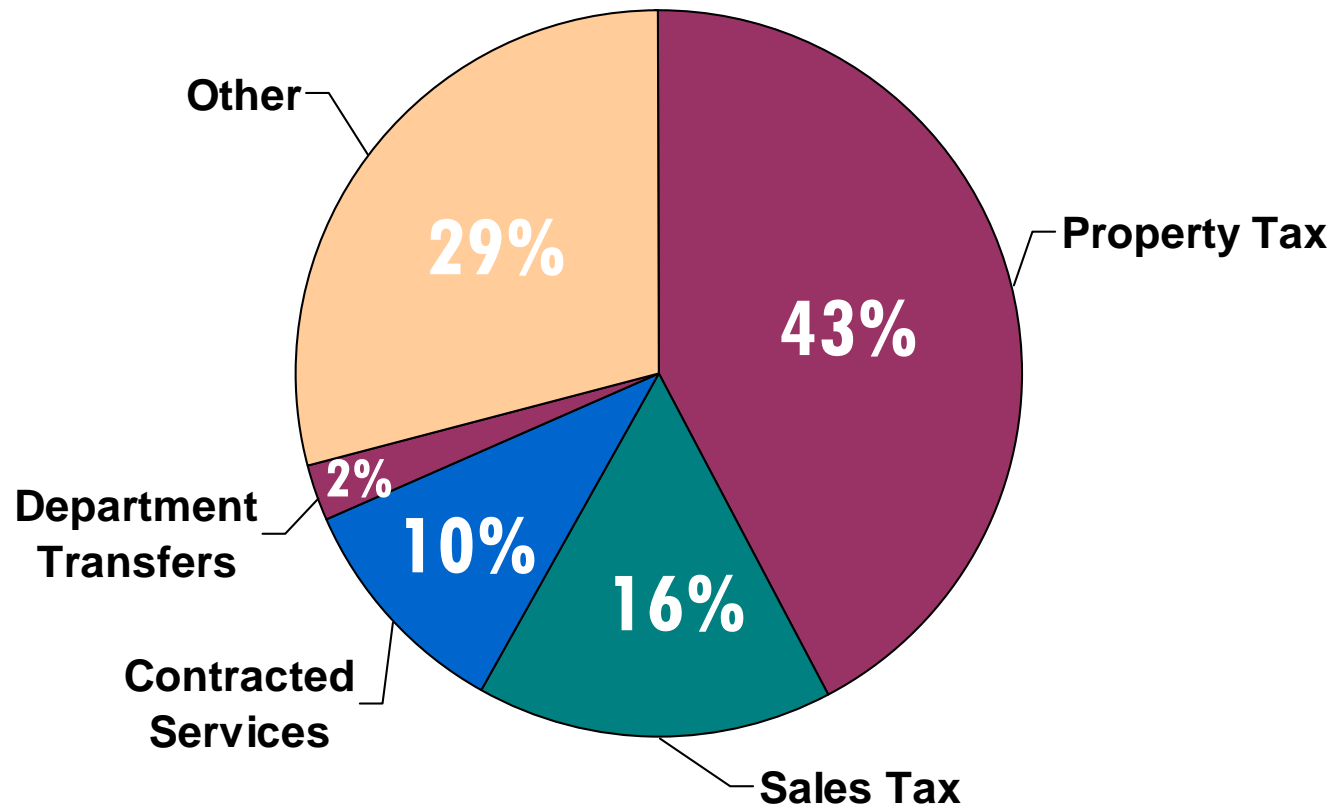


# 2007 Restricted Expenditures \$3.2 billion





# General Fund Revenue \$618 Million in 2007





# Where Do Property Taxes Go?



## **52¢ Schools**

**Local School levies and the State School Fund**



## **31¢ Local Services**

**City and local services including unincorporated roads, fire, library, parks & hospital districts**



## **15¢ King County**

**King County General Fund and other regional services throughout the County**

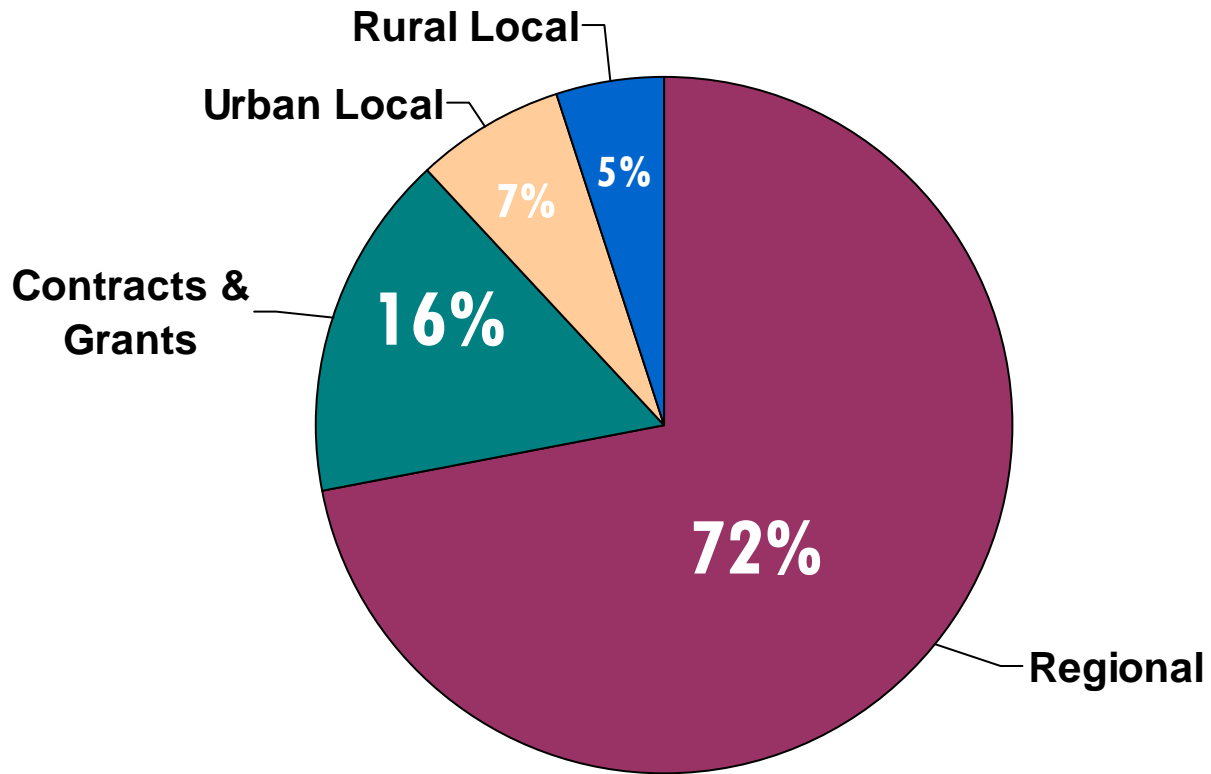


## **2¢ Port of Seattle**

**Port services and Port of Seattle Operations**



# 2007 General Fund Expenditures by Service Area

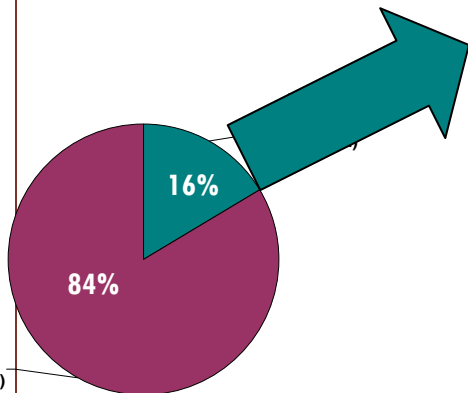
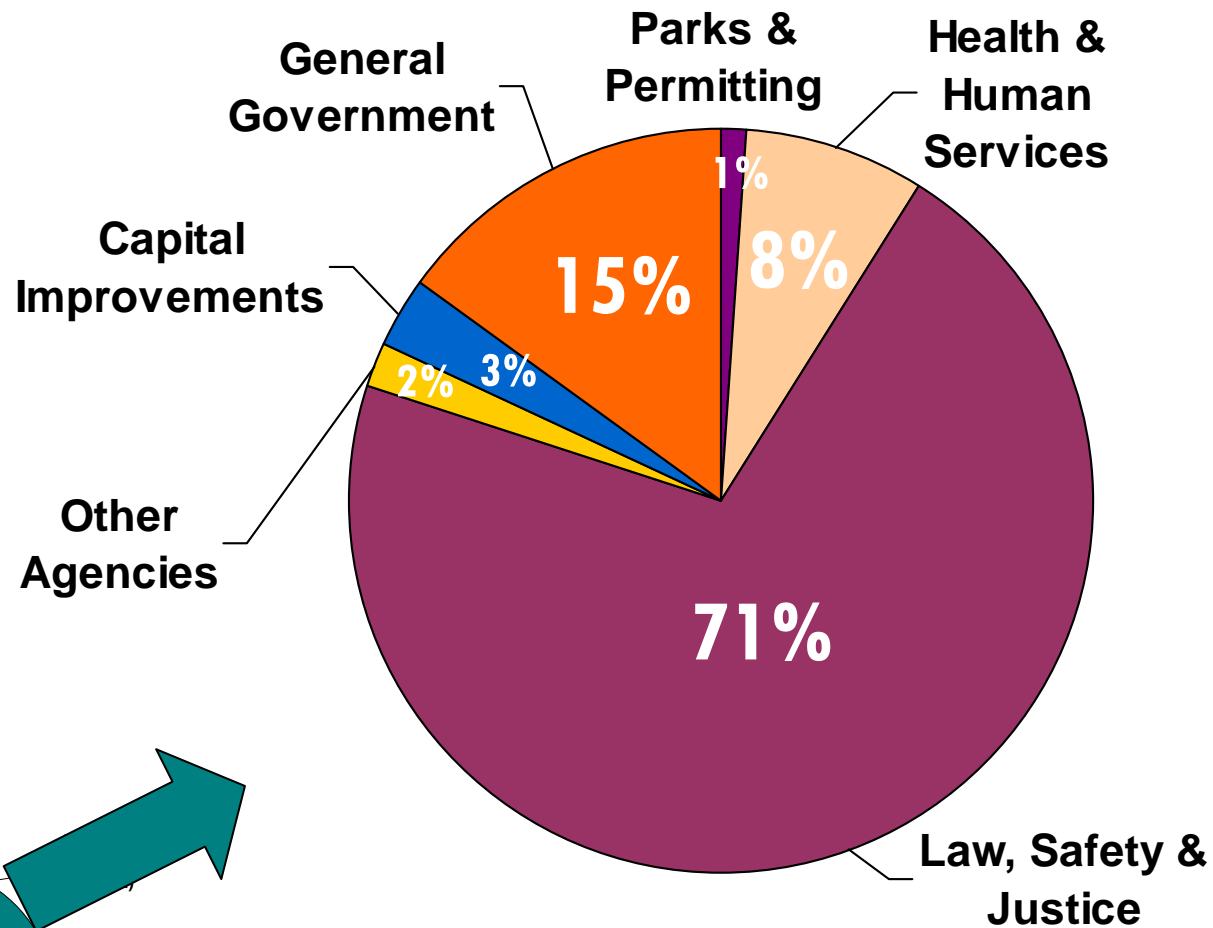






# 2007 General Fund Expenditures

\$628 million

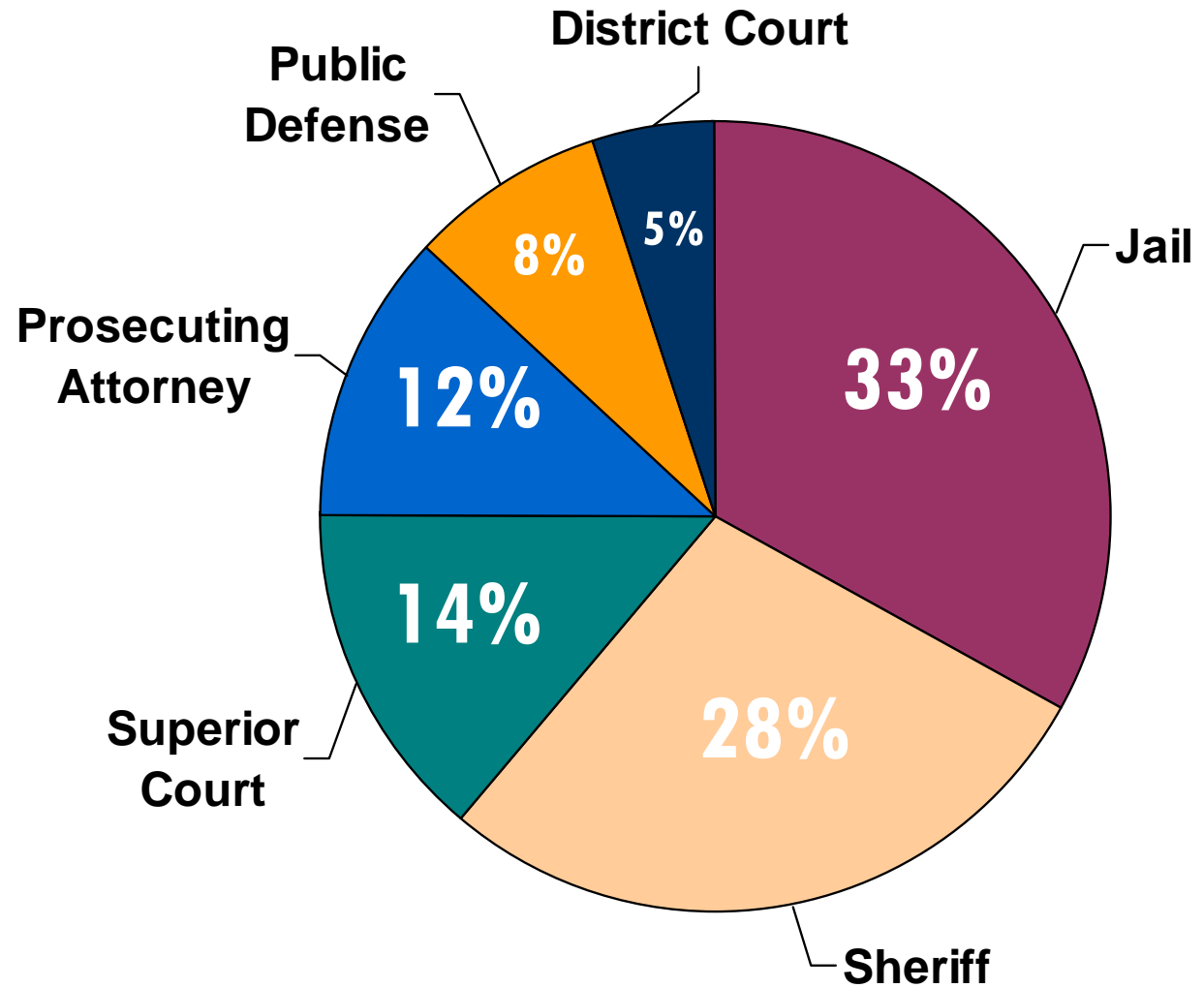
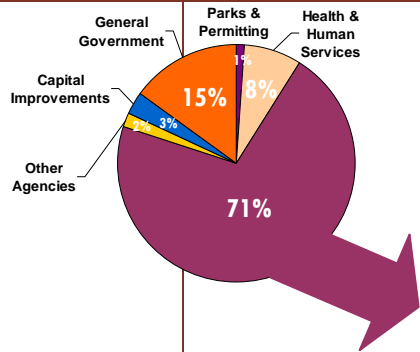


Restricted  
(100+ Funds)



# Law, Safety & Justice General Fund Expenditures

\$437 million in 2007





# Budget Priorities for Law, Safety and Justice

---

## TOP 3 PRIORITIES

1. Public Defense Attorneys
2. Prosecuting Attorneys
3. Superior and District Courts: Mental Health, Criminal, Civil, Family Law, Therapeutic, Drug
4. Emergency Preparedness/Management
5. Jails and Community Corrections
6. Juvenile Services
7. Sex Offender Registration and Search
8. Sheriff's Department
9. Victim Assistance
10. Other



# Budget Priorities for Public Health

---

## TOP 3 PRIORITIES

1. Public Health Clinics
2. Drug and Substance Abuse Treatment
3. HIV/AIDS Prevention Programs
4. Immunization Programs
5. Pandemic Flu Preparation and Response
6. Restaurant Inspections
7. Epidemiology
8. Other



# Budget Priorities for Community and Human Services

---

## TOP 3 PRIORITIES

1. Low Income Housing
2. 10 Year Plan to End Homelessness
3. Veterans Programs
4. Senior Programs
5. Women's Programs
6. Work Training Programs
7. Youth and Family Services
8. Civil Rights Commission and Services
9. Domestic Violence & Batterers Treatment
10. Other



# General Fund Priorities

---

## TOP 2 PRIORITIES

1. Public Health Clinics
2. Elections Department
3. Disease Prevention
4. Community Services  
(e.g. youth, family and seniors)
5. <insert SLIDE 17 #1 >
6. <insert SLIDE 17 #2 >



## Transit Use - Riders

---

If you ride the bus, what are your top 3 priorities that would make you a more satisfied rider?

1. Greater bus reliability
2. Greater frequency
3. Express buses
4. More bus shelters
5. Better Security for Riders
6. Cleaner buses
7. Fewer transfers
8. Reduced fares
9. Increased Park & Ride access
10. More, different routes



## Transit Use – Non Riders

---

If you do not ride the bus, rank the top three improvements which might cause to ride the bus?

1. Greater bus reliability
2. Greater frequency
3. Express buses
4. More bus shelters
5. Better security for riders
6. Cleaner buses
7. Fewer transfers
8. Reduced fares
9. Increased Park & Ride access
10. More, different routes





## Budget Priorities for Roads (unincorporated areas only)

---

1. Road Capacity
2. Road Maintenance (County roads)
3. Sidewalks
4. Traffic Signaling for Improved Traffic Management



## Budget Priorities for Transportation

---

**Which should have the higher priority?**

1. Transit Improvements
2. Road Improvements in Unincorporated Areas



# Budget Priorities for Natural Resources/Environment

---

## TOP 3 PRIORITIES

1. Building Code Permits and Enforcement
2. Farmland Preservation
3. Flood Control
4. Habitat Conservation
5. Regional Parks and Open Space
6. Regional Trails
7. Salmon Habitat Restoration
8. Storm Water Services
9. Other



# Overall Budget Priorities

---

Of the top two priority issues from each issue area, which is your most important?

➤ **INSERT LIST = TOP TWO FROM:**

**#17**

**#18**

**#19**

**#25**



# King County Initiative

---

Assume that King County has \$5-10 million that can be spent on a specific initiative. What would you do with that money?

- **BUILD LIST FROM PARTICIPANT SUGGESTIONS  
(9 items + "other")**
- **THEN PRIORITIZE LIST**



# How Are We Doing?

---

How would you rate King County's current performance in these key areas?

**EXCELLENT = 1..2..3..4..5..6 = POOR**

1. Prudently managing the public's money
2. Engaging citizens in oversight of government services
3. Providing excellent customer service
4. Measuring our performance and reporting back to the public