

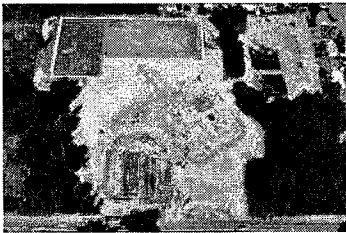
2008-507

CAPITAL FACILITIES PLAN

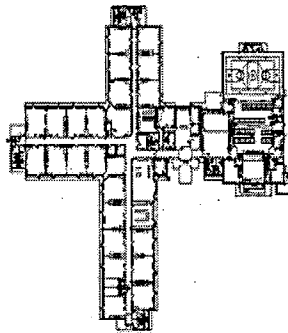
2008 - 2009 ~ 2013 - 2014



KENT SCHOOL DISTRICT NO. 415



Emerald Park Elementary Site



Emerald Park Elementary School



Emerald Park Elementary

*Serving Unincorporated King County Residents
And Residents of the Cities of
Kent, Covington, Auburn, Renton
Black Diamond, Maple Valley, and SeaTac, Washington*

April 2008

CAPITAL FACILITIES PLAN

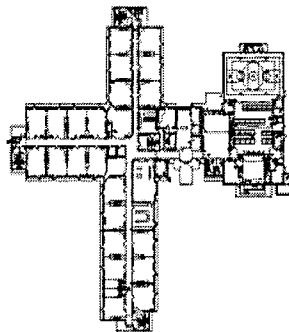
2008 - 2009 ~ 2013 - 2014



KENT SCHOOL DISTRICT NO. 415



Emerald Park Elementary Site



Emerald Park Elementary School



Emerald Park Elementary

*Serving Unincorporated King County Residents
And Residents of the Cities of
Kent, Covington, Auburn, Renton
Black Diamond, Maple Valley, and SeaTac, Washington*

April 2008

Kent School District



SIX - YEAR CAPITAL FACILITIES PLAN

2008 - 2009 ~ 2013 - 2014

April 2008

For information on the Plan, please call the
Finance & Planning Department at (253) 373-7295

Capital Facilities Plan

Contributing Staff

Gwenn Escher-Derdowski
Forecast & Planning Administrator

Fred Long, Supervisor of Facilities Construction
Karla Wilkerson & Lynell Mooney, Facilities Department
Don Walkup, Supervisor of Transportation Department
Kathy Fosjord, Transportation Department

Cover Design by Debbi Smith
Maps by Jana Tucker

Kent School District

Kent School District No. 415
12033 SE 256th Street
Kent, Washington 98030-6643
(253) 373-7295

SIX - YEAR CAPITAL FACILITIES PLAN

2008 - 2009 ~ 2013 - 2014



BOARD of DIRECTORS

Jim Berrios
Bill Boyce
Sandra Collins
Chris Davies
Debbie Straus

ADMINISTRATION

Barbara Grohe, Ph.D. – Superintendent

Fred H. High – Assistant Superintendent for Business Services

Mark Haddock, Ph.D. – Assistant Superintendent, Learning & School Improvement

Larry Miner – Assistant Superintendent for Human Resources

John Knutson – Executive Director of Finance

Merri Rieger – Executive Director, School Improvement 9 – 12

Janis Bechtel – Executive Director, School Improvement K – 8

Jeanette Ristau – Executive Director, School Improvement K – 6

Becky Hanks – Executive Director, Community Connections

Charles Lind – Executive Director, Labor Relations & Legal Services

Laura Madeo – Executive Director of Instructional Services

Greg Whiteman – Executive Director of Information Technology

Kent School District

Six-Year Capital Facilities Plan

Table of Contents

| Section | | Page Number |
|---------|---|-------------|
| I | Executive Summary | 2 |
| II | Six-Year Enrollment Projection & History | 4 |
| III | District Standard of Service | 9 |
| IV | Inventory, Capacity & Maps of Existing Schools | 12 |
| V | Six-Year Planning and Construction Plan | 15 |
| VI | Relocatable Classrooms | 18 |
| VII | Projected Classroom Capacity | 19 |
| VIII | Finance Plan, Cost Basis and Impact Fee Schedules | 24 |
| IX | Summary of Changes to Previous Plan | 31 |
| X | Appendixes | 32 |

I Executive Summary

This Six-Year Capital Facilities Plan (the "Plan") has been prepared by the Kent School District (the "District") as the organization's facilities planning document, in compliance with the requirements of Washington's Growth Management Act, King County Code K.C.C. 21A.43 and Cities of Kent, Covington, Auburn, Renton, Black Diamond, Maple Valley, and SeaTac. This annual plan update was prepared using data available in the spring of 2008 for the 2007-2008 school year.

This Plan is consistent with prior long-term capital facilities plans adopted by the Kent School District. This Plan is not intended to be the sole planning document for all of the District's needs. The District may prepare interim and periodic Long Range Capital Facilities Plans consistent with Board Policies, taking into account a longer or shorter time period, other factors and trends in the use of facilities, and other needs of the District as may be required.

Prior Capital Facilities Plans of the Kent School District have been adopted by Metropolitan King County Council and Cities of Kent, Covington, Auburn and Renton and included in the Capital Facilities Plan element of the Comprehensive Plans of each jurisdiction. The first ordinance implementing impact fees for the unincorporated areas was effective September 15, 1993.

In order for impact fees to be collected in the unincorporated areas of Kent School District, the Metropolitan King County Council must adopt this Plan and a fee-implementing ordinance for the District. For impact fees to be collected in the incorporated portions of the District, the cities of Kent, Covington, Auburn and Renton must also adopt this Plan and their own school impact fee ordinances. This Plan has also been submitted to cities of Black Diamond, Maple Valley, and SeaTac.

This Capital Facilities Plan establishes a standard of service in order to ascertain current and future capacity. While the State Superintendent of Public Instruction establishes square footage guidelines for capacity, those guidelines do not account for local program needs in the District. The Growth Management Act, King County and City codes and ordinances authorize the District to make adjustments to the standard of service based on specific needs for students of the District.

This Plan includes the standard of service as established by Kent School District. Program capacity is based on an average capacity and updated to reflect changes to special programs served in each building. Relocatables in the capacity calculation use the same standard of service as the permanent facilities.

(continued)

I Executive Summary

(continued)

The capacity of each school in the District is calculated based on the District standard of service and the existing inventory, which includes some relocatable classrooms. The District's program capacity of permanent facilities reflects program changes and the reduction of class size to meet the requirements of Student Achievement Initiative 728. Relocatables provide additional transitional capacity until permanent facilities are completed.

Kent School District is the fourth largest district in the state. Enrollment is electronically reported monthly to the Office of the Superintendent of Public Instruction (OSPI) on Form P-223. Although funding apportionment is based on Annual Average Full Time Equivalent (AAFTE), Enrollment on October 1 is a widely recognized "snapshot in time" that is used to report the District's enrollment for the year.

P-223 Headcount for October 1, 2007 was 26,862. P-223 FTE (Full Time Equivalent) enrollment was 25,745.42. (FTE reports Kindergarten at .5 and excludes Early Childhood Education [ECE] and college-only Running Start students.) The actual number of individual students per the October 2007 full head count was 27,584. (Full Headcount reports all enrolled students at 1.0 including Kindergarten, ECE and college-only Running Start students.)

The District's standard of service, enrollment history and projections, and use of transitional facilities are reviewed in detail in various sections of this Plan. The District plans to continue to satisfy concurrency requirements through the transitional use of relocatables.

A financing plan is included in Section V I I I which demonstrates the District's ability to implement this Plan. Pursuant to the requirements of the Growth Management Act, this Plan will be updated annually with changes in the fee schedules adjusted accordingly.

II Six - Year Enrollment Projection

For capital facilities planning, growth projections are based on cohort survival and student yield from documented residential construction projected over the next six years. (See Table 2) The student generation factor, as defined on the next page, is the basis for the growth projections from new developments.

King County births and the District's relational percentage average were used to determine the number of kindergartners entering the system. (See Table 1) 8.29% of 22,431 King County live births in 2003 is projected for 1,860 students expected in Kindergarten for October 1, 2008. Together with proportional growth from new construction, 8.29% of King County births is equivalent to the number of students projected to enter kindergarten in the district for the next six-year period. (See Table 2)

State Funded Full Day Kindergarten ("FDK") programs have required a revision to the methodology for projecting Kindergarten at 1.0 FTE for qualifying schools. Schools with half-day Kindergarten programs and the optional Tuition-based FDK are projected at .50 FTE. (See Table 2 A)

Early Childhood Education students (sometimes identified as "Preschool Special Education [SE] or handicapped students") are forecast and reported separately. Capacity is reserved to serve the ECE programs at seven elementary schools.

The first grade population is traditionally 7 - 8% larger than the kindergarten population due to growth and transfers to the District from private kindergartens. Cohort survival method uses historical enrollment data to forecast the number of students projected for the following year.

Near term projections assume some growth from new developments to be offset by current local economic conditions. With notable exceptions, the expectation is that enrollment increases will occur District-wide in the long term. District projections are based on historical growth patterns combined with continuing development of projects in the pipeline dependent on market/growth conditions.

The District will continue to track new development activity to determine impact to schools and monitor conditions to reflect adjustments in this assumption. The six-year enrollment projection anticipates moderate enrollment growth from new development currently in some phase of planning or construction in the district.

Information on new residential developments and the completion of these proposed developments in all jurisdictions may be considered in the District's future analysis of growth projections.

Within practical limits, the District has kept abreast of proposed developments. The Kent School District serves seven permitting jurisdictions: unincorporated King County, the cities of Kent, Covington, and Auburn and small portions of the cities of Renton, SeaTac, and Maple Valley. The west Lake Sawyer area of Kent School District is in the city of Black Diamond.

(Continued)

II Six - Year Enrollment Projection

(Continued)

STUDENT GENERATION FACTOR

"Student Factor" is defined by King County code as "the number derived by a school district to describe how many students of each grade span are expected to be generated by a dwelling unit" based on district records of average actual student generated rates for developments completed within the last five years. Following these guidelines, the student generation factor for Kent School District is as follows:

| | | | |
|---------------|---------------|-------------|------|
| Single Family | Elementary | .445 | |
| | Middle School | .118 | |
| | Senior High | <u>.245</u> | |
| | Total | | .808 |
| Multi-Family | Elementary | .296 | |
| | Middle School | .075 | |
| | Senior High | <u>.111</u> | |
| | Total | | .482 |

The student generation factor is based on a survey of 1,878 single family dwelling units and 1,283 multi-family dwelling units with no adjustment for occupancy rates. Please refer to Appendix E on Page 36 of the Capital Facilities Plan for details of the Student Generation Factor survey.

The actual number of students in those residential developments was determined using the District's Education Logistics (EDULOG) Transportation System.

**KENT SCHOOL DISTRICT No. 415
OCTOBER P 223 F T E (Full Time Equivalent) ENROLLMENT HISTORY ¹**

LB = Live Births LB in 1985 LB in 1986 LB in 1987 LB in 1988 LB in 1989 LB in 1990 LB in 1991 LB in 1992 LB in 1993 LB in 1994 LB in 1995 LB in 1996 LB in 1997 LB in 1998 LB in 1999 LB in 2000 LB in 2001 LB in 2002

| October FTE Enrollment | 1990 | 1991 | 1992 | 1993 | 1994 | 1995 | 1996 | 1997 | 1998 | 1999 | 2000 | 2001 | 2002 | 2003 | 2004 | 2005 | 2006 | 2007 |
|--------------------------------------|--------|--------|--------|--------|--------|--------|--------|--------|--------|--------|--------|--------|--------|--------|--------|--------|--------|--------|
| King County Live Births ² | 19,825 | 19,999 | 20,449 | 21,289 | 22,541 | 23,104 | 23,002 | 23,188 | 22,355 | 22,010 | 21,817 | 21,573 | 21,646 | 22,195 | 22,007 | 22,487 | 21,778 | 21,863 |
| Increase / Decrease | 851 | 174 | 450 | 840 | 1,252 | 563 | -102 | 186 | -833 | -345 | -193 | -244 | 73 | 549 | -188 | 480 | -709 | -144 |
| Kindergarten / Birth % ² | 8.88% | 9.49% | 9.40% | 9.07% | 8.47% | 8.54% | 8.44% | 8.38% | 8.27% | 8.56% | 8.41% | 8.41% | 8.06% | 8.06% | 8.33% | 8.41% | 8.22% | 8.29% |
| Kindergarten ^{1 & 2} | 880 | 949 | 962 | 965 | 955 | 987 | 971 | 972 | 925 | 942 | 900 | 907 | 873 | 894 | 917 | 943 | 895 | 906 |
| Grade 1 | 1,852 | 1,945 | 2,029 | 2,017 | 1,967 | 1,975 | 2,152 | 2,085 | 2,064 | 1,989 | 2,069 | 1,936 | 1,922 | 1,851 | 1,954 | 1,938 | 2,003 | 1,873 |
| Grade 2 | 1,773 | 1,944 | 1,998 | 2,048 | 1,937 | 2,011 | 1,979 | 2,194 | 2,095 | 2,078 | 2,015 | 2,067 | 1,936 | 1,965 | 1,935 | 1,981 | 1,998 | 2,045 |
| Grade 3 | 1,824 | 1,866 | 1,950 | 1,972 | 1,965 | 1,959 | 2,025 | 2,058 | 2,208 | 2,111 | 2,098 | 2,040 | 2,055 | 1,975 | 2,020 | 1,962 | 2,026 | 2,033 |
| Grade 4 | 1,793 | 1,916 | 1,900 | 1,939 | 1,942 | 2,012 | 1,966 | 2,064 | 2,045 | 2,222 | 2,086 | 2,166 | 2,068 | 2,072 | 2,057 | 2,024 | 2,015 | 2,049 |
| Grade 5 | 1,702 | 1,865 | 1,911 | 1,907 | 1,899 | 1,924 | 1,988 | 2,023 | 2,108 | 2,037 | 2,251 | 2,109 | 2,149 | 2,067 | 2,102 | 2,090 | 2,051 | 2,020 |
| Grade 6 | 1,629 | 1,733 | 1,885 | 1,951 | 1,915 | 1,895 | 1,924 | 2,036 | 2,045 | 2,119 | 2,056 | 2,253 | 2,151 | 2,205 | 2,139 | 2,164 | 2,101 | 2,098 |
| Grade 7 | 1,624 | 1,720 | 1,812 | 1,915 | 1,946 | 1,925 | 1,899 | 1,982 | 2,063 | 2,081 | 2,208 | 2,127 | 2,380 | 2,209 | 2,243 | 2,200 | 2,205 | 2,130 |
| Grade 8 | 1,545 | 1,628 | 1,724 | 1,799 | 1,882 | 1,941 | 1,927 | 1,936 | 1,970 | 2,015 | 2,033 | 2,154 | 2,079 | 2,351 | 2,221 | 2,293 | 2,254 | 2,184 |
| Grade 9 - Junior High | 1,483 | 1,612 | 1,689 | 1,716 | 1,800 | 1,894 | 1,963 | 1,931 | 1,925 | 2,102 | 2,208 | 2,246 | 2,404 | 2,309 | 2,705 | 2,767 | 2,772 | 2,560 |
| Grade 9 - Senior High | 1,468 | 1,480 | 1,663 | 1,698 | 1,690 | 1,765 | 1,851 | 1,977 | 1,953 | 2,045 | 2,113 | 2,064 | 2,039 | 2,207 | 2,124 | 2,173 | 2,212 | 2,474 |
| Grade 10 | 1,360 | 1,400 | 1,409 | 1,537 | 1,529 | 1,606 | 1,681 | 1,797 | 1,849 | 1,782 | 1,770 | 1,835 | 1,823 | 1,787 | 1,907 | 1,799 | 1,881 | 1,882 |
| Grade 11 | 1,202 | 1,255 | 1,290 | 1,340 | 1,368 | 1,430 | 1,465 | 1,507 | 1,632 | 1,537 | 1,432 | 1,440 | 1,475 | 1,466 | 1,446 | 1,475 | 1,451 | 1,491 |
| Grade 12 | 20,135 | 21,312 | 22,222 | 22,803 | 22,794 | 23,323 | 23,792 | 24,560 | 24,882 | 25,060 | 25,238 | 25,344 | 25,354 | 25,358 | 25,770 | 25,809 | 25,864 | 25,745 |
| Total Enrollment ³ | 916 | 1,178 | 909 | 582 | -10 | 529 | 469 | 768 | 322 | 178 | 106 | 106 | 9 | 4 | 412 | 39 | 55 | -119 |
| Yearly FTE Increase | 916 | 2,094 | 3,003 | 3,585 | 3,575 | 4,104 | 4,574 | 5,341 | 5,663 | 5,841 | 6,019 | 6,126 | 6,135 | 6,140 | 6,552 | 6,591 | 6,646 | 6,527 |
| Cumulative Increase | | | | | | | | | | | | | | | | | | |

¹ FTE enrollment counts have been rounded to the nearest whole number. Kindergarten students are reported at .5 FTE although most elementary schools now serve some full day Kindergarten programs.

² This number indicates actual births in King County 5 years prior to enrollment year as updated by King Co Health Dept. KSD percentage based on actual Kindergarten enrollment 5 years later.

³ P-223 Enrollment Report excludes Early Childhood Education ("EOE" & "B2" or Birth to 2 Preschool Special Education) and college-only Running Start students.

October 2007 P 223 Headcount = 26,862 & Full Headcount = 27,584. Full Headcount includes Kindergarten, Early Childhood Education & college-only Running Start students at 1.0 Headcount.

**KENT SCHOOL DISTRICT No. 415
SIX - YEAR F.T.E. ENROLLMENT PROJECTION**

| State Funded FDK at 14 schools | LB in 2002 | LB in 2003 | LB in 2004 | LB in 2005 | LB in 2006 | LB in 2007 | LB in 2008 | | | | |
|--------------------------------------|----------------------------|---------------|---------------|---------------|---------------|---------------|---------------|---|---|---|---|
| October | ACTUAL | P | R | O | J | E | C | T | I | O | N |
| | 2007 | 2008 | 2009 | 2010 | 2011 | 2012 | 2013 | | | | |
| King County Live Births ¹ | 21,863 | 22,431 | 22,874 | 22,680 | 24,244 | 24,250 | 24,300 | | | | |
| Increase / Decrease | 85 | 568 | 443 | -194 | 1,564 | 6 | 50 | | | | |
| Kindergarten / Birth % ² | 8.29% | 8.29% | 8.29% | 8.29% | 8.29% | 8.29% | 8.29% | | | | |
| ^{2/3} Kindergarten FTE @ .5 | 906 | 475 | 473 | 465 | 530 | 532 | 532 | | | | |
| ^{2/3} FD Kindergarten @ 1.0 | | 910 | 950 | 950 | 950 | 950 | 950 | | | | |
| Grade 1 | 1,873 | 1,905 | 2,046 | 2,041 | 2,025 | 2,161 | 2,165 | | | | |
| Grade 2 | 2,045 | 1,893 | 1,946 | 2,089 | 2,083 | 2,067 | 2,205 | | | | |
| Grade 3 | 2,033 | 2,096 | 1,951 | 2,005 | 2,151 | 2,145 | 2,128 | | | | |
| Grade 4 | 2,049 | 2,051 | 2,133 | 1,987 | 2,041 | 2,188 | 2,182 | | | | |
| Grade 5 | 2,020 | 2,051 | 2,085 | 2,168 | 2,021 | 2,075 | 2,223 | | | | |
| Grade 6 | 2,098 | 2,094 | 2,124 | 2,159 | 2,244 | 2,094 | 2,149 | | | | |
| Grade 7 | 2,130 | 2,133 | 2,135 | 2,165 | 2,201 | 2,286 | 2,135 | | | | |
| Grade 8 | 2,184 | 2,088 | 2,115 | 2,117 | 2,146 | 2,181 | 2,265 | | | | |
| Grade 9 | 2,560 | 2,518 | 2,407 | 2,437 | 2,440 | 2,473 | 2,513 | | | | |
| Grade 10 | 2,474 | 2,311 | 2,299 | 2,198 | 2,225 | 2,228 | 2,258 | | | | |
| Grade 11 | 1,882 | 2,071 | 2,044 | 2,034 | 1,945 | 1,969 | 1,972 | | | | |
| Grade 12 | 1,491 | 1,468 | 1,772 | 1,749 | 1,741 | 1,665 | 1,686 | | | | |
| Total FTE Enrollment | 25,745 | 26,064 | 26,480 | 26,564 | 26,743 | 27,014 | 27,363 | | | | |
| | <small>Note: 2/3/4</small> | | | | | | | | | | |
| Yearly Increase | -119 | 319 | 416 | 84 | 179 | 271 | 349 | | | | |
| Yearly Increase/Decrease % | -0.46% | 1.24% | 1.60% | 0.32% | 0.67% | 1.01% | 1.29% | | | | |
| Cumulative Increase | -119 | 200 | 616 | 700 | 879 | 1,150 | 1,499 | | | | |

| | | | | | | | |
|-----------------------------------|---------------|---------------|---------------|---------------|---------------|---------------|---------------|
| Full Time Equivalent (FTE) | 25,745 | 26,064 | 26,480 | 26,564 | 26,743 | 27,014 | 27,363 |
|-----------------------------------|---------------|---------------|---------------|---------------|---------------|---------------|---------------|

- ¹ Kindergarten enrollment projection is based on KSD percentage of live births in King County five years previous.
- ² Kindergarten FTE projection is calculated by using the District's previous year percentage of King County births 5 years earlier compared to actual kindergarten enrollment in the previous year. (Excludes ECE - Early Childhood Education)
- ³ Kindergarten projection is at 1.0 FTE for 14 schools qualifying for I-728 & State Apportionment Funded Full Day Kindergarten (FDK). Schools with Optional Tuition-based Full Day Kindergarten programs & 1/2 Day Kindergarten are projected at .5 FTE.
- ⁴ Oct. 2007 P223 FTE is 25,745 & Headcount is 26,862. Full student count with ECE Preschool & Running Start = 27,584.

G R O W T H P R O J E C T I O N S - Adjustments for current economic factors

* For facilities planning purposes, this six-year enrollment projection anticipates moderate enrollment growth from new development currently in some phase of planning or construction in the district.

**KENT SCHOOL DISTRICT No. 415
CAPACITY of ELEMENTARY SCHOOLS & KINDERGARTEN PROJECTIONS for October 2008**

| SCHOOL | ABR | 2007-2008 Program Capacity | 1.0 FTE Forecast for 1.0 Funded State Apportionment FDK | 1.0 FTE Forecast for 1.0 Funded I - 728 FDK | 1.0 FTE Forecast for 1.0 Funded Title I KAI FDK | .5 FTE Forecast for 0.50 Funded Kindergarten 1/2 Day | .5 FTE Forecast for 0.50 Funded Optional Tuition-Based 1/2 Day (& FDK) | .5 FTE Forecast for 0.50 Funded Basic Ed 1/2 Day K Only | Oct-08 Projected Kindergarten Students |
|-------------------------------|-----|----------------------------|---|---|---|--|--|---|--|
| | | | FTE | FTE | FTE | FTE | FTE | FTE | FTE |
| Carriage Crest Elementary | CC | 452 | | 56 | | | 28 | | 28 |
| Cedar Valley Elementary | CV | 402 | | | | | | 56 | 56 |
| Covington Elementary | CO | 498 | | | | | | 35 | 35 |
| Crestwood Elementary | CW | 456 | | | | | 35 | | 35 |
| East Hill Elementary | EH | 464 | | 68 | | | | 68 | 68 |
| Emerald Park | EP | 504 | | | | | | | 38 |
| Fairwood Elementary | FW | 408 | | | | | | | 26 |
| George T. Daniel Elementary | DE | 450 | 80 | | | | | 80 | 80 |
| Glennridge Elementary | GR | 456 | | | | | 25 | | 25 |
| Grass Lake Elementary | GL | 452 | | | | | | 20 | 20 |
| Horizon Elementary | HE | 504 | | | | | | 30 | 30 |
| Jenkins Creek Elementary | JC | 398 | | 50 | | | | 50 | 50 |
| Kent Elementary | KE | 464 | 80 | | | | | 80 | 80 |
| Lake Youngs Elementary | LY | 524 | | | | | | | 24 |
| Martin Sortun Elementary | MS | 474 | | 74 | | | | 74 | 74 |
| Meadow Ridge Elementary | MR | 464 | 86 | | | | | 86 | 86 |
| Meridian Elementary | ME | 524 | | | | | 32 | | 32 |
| Millennium Elementary 1-3 | ML | 498 | | | 40 | 23 | | 40 | 23 |
| Neely-O'Brien Elementary | NO | 440 | | 112 | | | | 112 | 112 |
| Panther Lake Elementary 1-2-3 | PL | 396 | | | 40 | 20 | | 40 | 20 |
| Park Orchard Elementary | PO | 480 | 76 | | | | | | 76 |
| Pine Tree Elementary 1-3 | PT | 522 | | | 20 | 18 | | 20 | 18 |
| Ridgewood Elementary | RW | 504 | | | | | | | 37 |
| Sawyer Woods Elementary | SW | 504 | | | | | | 25 | 25 |
| Scenic Hill Elementary | SH | 464 | | | | | | | 78 |
| Soos Creek Elementary | SC | 408 | | | | | | | 26 |
| Springbrook Elementary | SB | 398 | | 50 | | | | 50 | 50 |
| Sunrise Elementary | SR | 504 | | | | | | | 33 |
| Elementary TOTAL | | 13,012 | 400 | 410 | 100 | 61 | 280 | 134 | 910 |

950
910
1860
HdCnt

| | | | | |
|---|---|---|---|---|
| 5 | 6 | 3 | 9 | 5 |
|---|---|---|---|---|

Note 1: KAI = Kindergarten Academic Intervention at ML - PL - PT; FDK Program for qualified Kindergarten students & 1/2 Day Kindergarten for remainder of Kindergarten students.
 Note 2: Panther Lake (PL) Elementary projected for KAI FDK & 1/2 Day Kindergarten in 2008 but will likely have Apportionment-funded FDK when the new building opens in 2009.
 Note 3: 11 schools have State Funded FDK projected at 1.0 FTE - 3 schools have KAI FDK @ 1.0 & 1/2 Day K @ .5 - 14 have Optional Tuition-based &/or 1/2 Day Kindergarten all projected at .5 FTE.

Table 2 A

III Current Kent School District "Standard of Service"

In order to determine the capacity of facilities in a school district, King County Code 21A.06 references a "standard of service" that each school district must establish in order to ascertain its overall capacity. The standard of service identifies the program year, the class size, the number of classrooms, students and programs of special need, and other factors determined by the district which would best serve the student population.

This Plan includes the standard of service as established by Kent School District. The District has identified schools with significant special needs programs as "impact" schools and the standard of service targets a lower class size at those facilities. Relocatables included in the capacity calculation use the same standard of service as the permanent facilities. (See Appendix A, B & C)

The standard of service defined herein may continue to change in the future. Kent School District is continuing a long-term strategic planning process combined with review of changes to capacity and standard of service adjustments to meet the requirements of Student Achievement Initiative 728. This process will affect various aspects of the District's "standard of service" and future changes will be reflected in future capital facilities plans. Because the funding for Initiative 728 is incremental, implementation of the Initiative is also incremental and may result in changes to school capacity.

Current Standards of Service for Elementary Students

Class size for Kindergarten should not exceed an average of 22 students.
Class size for grades 1 - 4 should not exceed an average of 23 students.
Class size for grades 5 - 6 should not exceed an average of 29 students.

Program capacity for general education elementary classrooms is calculated at an average of 24 students per classroom because of fluctuations between primary and intermediate grade levels (i.e. third/fourth or fourth/fifth grade split classes, etc.). Most elementary schools provide full day kindergarten programs (FDK or KAI – Full Day Kindergarten or Kindergarten Academic Intervention) with the second half of the day funded by grants or tuition.

Students have scheduled time in a computer lab. Students may also be provided music instruction and physical education in a separate classroom or facility.

Special Education for students with disabilities may be provided in a self-contained classroom with a capacity of 10-15 depending on the program.

(continued)

III Current Kent School District "Standard of Service" (continued)

Identified students will also be provided other educational opportunities in classrooms for programs such as those designated as follows:

- English Language Learners (E L L)
- Self-contained Special Education Support Center Programs (SC)
- Integrated Programs & Resource Rooms (for special remedial assistance)
- Early Childhood Education (ECE) (3-4 yr. old students with disabilities)
- School Adjustment (SA) Program for severely behavior-disordered students
- Speech & Language Therapy & Programs for Hearing Impaired students
- Adaptive Support Center for Mild, Moderate & Severe Disabilities (ASC-DD)
- Occupational & Physical Therapy Programs (OT/PT)
- Developmental Kindergarten in SC Programs
- Kindergarten Academic Intervention Program (KAI-Full Day Kindergarten)
- Education for Disadvantaged Students (Title I) – Federal Program
- Learning Assisted Programs (LAP) – State Program
- District Remediation Programs
- Education for Highly Capable Students (formerly "Gifted" Program)

Some of the above special programs require specialized classroom space, as well as music and physical education classrooms, computer labs, etc.; thus, the permanent capacity of some of the buildings housing these programs is reduced. Some students, for example, leave their regular classroom for a short period of time to receive instruction in these special programs and "pull-out" space must be allocated to serve these programs. Some newer buildings have been constructed to accommodate most of these programs; some older buildings have been modified, and in some circumstances, these modifications reduce the classroom capacity of the buildings. When programs change, program capacity is updated to reflect the change in program and capacity.

Current Standards of Service for Secondary Students

The standards of service outlined below reflect only those programs and educational opportunities provided to secondary students which directly affect the capacity of the school buildings. Reductions have been made in 7th and 10th grade English classes for Initiative 728. These standards are subject to change pending annual updates based on staff and public review for changes funded by Student Achievement Initiative 728.

Class size for grades 7 - 8 should not exceed an average of 29 students.

Class size for 7th & 10th grade English class should not exceed an average of 25 students.

Class size for grades 9 - 12 should not exceed an average of 31 students.

Special Education for students with disabilities may be provided in a self-contained classroom with a capacity of 10-15 depending on the program. (cont'd.)

III Current Kent School District "Standard of Service" (continued)

Identified secondary students will also be provided other educational opportunities in classrooms for programs designated as follows:

- Computer, Multi-media & Technology Labs & Programs – (Nova Net - Advanced Academics)
- Technology Academy programs at Kent-Meridian High School & Mill Creek Middle School
- Science Programs & Labs – Biology, Chemistry, Physics, Oceanography, Astronomy, Meteorology, Marine Biology, General Science, etc.
- English Language Learners (ELL)
- Integrated Programs & Resource Rooms (for special remedial assistance)
- Basic Skills Programs
- Transition Outreach Program (TOP) for 18-21 year old Special Education students
- Child Development Preschool and Daycare Programs
- Music Programs – Band, Orchestra, Chorus, Jazz Band, etc.
- Art Programs – Painting, Design, Drawing, Ceramics, Pottery, Photography, etc.
- Theater Arts – Drama, Stage Tech, etc.
- Journalism and Yearbook Classes
- Highly Capable (Honors or Gifted) and Advanced Placement Programs
- International Baccalaureate Program
- Kent Phoenix Academy – Performance Learning Center, Gateway, Virtual High School & Kent Success program with evening classes designed for credit retrieval
- Traffic Safety Education
- JROTC - Junior Reserve Officers Training Corps
- Variety of Career & Technical Education Programs (CTE-Vocational Education)
 - Family & Consumer Science – Culinary Arts, Sewing, Careers w/Children/Educ., etc.
 - Health & Human Services – Sports Medicine, Sign Language, Cosmetology, etc.
 - Business Education – Word Processing, Accounting, Business Law & Math, DECA, FBLA (Future Business Leaders), Sales & Marketing, Economics, Web Design
 - Technical & Industry – Woodworking, Cabinet Making, Building Trades, Metals, Automotive & Manufacturing Technology, Welding, Machine Shop, Drafting, Drawing, CAD (Computer-aided Design), Electronics, Engineering & Design, Aviation, etc.
 - Graphic & Commercial Arts, Media, Photography, Theater & Stage, Ag & Horticulture

Many of these programs and others require specialized classroom space which can reduce the permanent capacity of the school buildings. In addition, alternative home school assistance, choice and transition programs are provided for students in grades 2 - 12 at Kent Mountain View Academy.

Space or Classroom Utilization

As a result of scheduling conflicts for student programs, the need for specialized rooms for certain programs, and the need for teachers to have a work space during their planning periods, it is not possible to achieve 100% utilization of regular teaching stations at secondary schools. Based on the analysis of actual utilization of classrooms, the District has determined that the standard utilization rate is 85% for secondary schools. Program capacity at elementary schools reflects 100% utilization at the elementary level with adjustments for pull-out programs served in relocatables. In the future, the District will continue close analysis of actual utilization.

I V Inventory and Capacity of Existing Schools

Currently, the District has permanent program capacity to house 27,150 students and transitional (relocatable) capacity to house 1,470. This capacity is based on the District's Standard of Service as set forth in Section III. Included in this Plan is an inventory of the District's schools by type, address and current capacity. *(See Table 3 on Page 13)*

The program capacity is periodically updated for changes in programs, additional classrooms and new schools. Program capacity has been updated in this Plan to reflect program changes and new capacity for building additions at the high schools.

Program capacity also reflects adjustments for the Student Achievement Initiative 728 reduction in class size. The class size reduction received voter approval in the Educational Programs and Operations Levy as well as through funding for Student Achievement Initiative 728. The District will conduct annual public review and update class size recommendations in accordance with the requirements and incremental funding of Student Achievement Initiative 728.

Kent Mountain View Academy (formerly Kent Learning Center and Grandview Elementary) serves Grades 2 – 12 with transition, choice and home school assistance programs. It is located in the former Grandview School in the western part of the District in the city of SeaTac. This school was originally designed as an elementary school and is included in the elementary capacity for this Plan.

Kent Phoenix Academy is a new non-traditional high school which opened in Fall 2007 in the renovated site and building that formerly served Sequoia Middle School. KPA has four special programs including the Performance Learning Center, Gateway, Virtual High School and Kent Success. Kent Success replaced the former Night Academy at Kent-Meridian High School and provides afternoon and evening classes for credit retrieval.

Calculation of Elementary, Middle School and Senior High School capacities are set forth in Appendices A, B and C. A map of existing schools is included on Page 14.

**KENT SCHOOL DISTRICT No. 415
INVENTORY and CAPACITY of EXISTING SCHOOLS**

| | | | | 2007-2008 | |
|--|-------------|-----|---|-------------------------------|--|
| SCHOOL | Year Opened | ABR | ADDRESS | Program Capacity ¹ | |
| Carriage Crest Elementary | 1990 | CC | 18235 - 140th Avenue SE, Renton 98058 | 452 | |
| Cedar Valley Elementary | 1971 | CV | 26500 Timberlane Way SE, Covington 98042 | 402 | |
| Covington Elementary | 1961 | CO | 17070 SE Wax Road, Covington 98042 | 498 | |
| Crestwood Elementary | 1980 | CW | 25225 - 180th Avenue SE, Covington 98042 | 456 | |
| East Hill Elementary | 1953 | EH | 9825 S 240th Street, Kent 98031 | 464 | |
| Emerald Park | 1999 | EP | 11800 SE 216th Street, Kent 98031 | 504 | |
| Fairwood Elementary | 1969 | FW | 16600 - 148th Avenue SE, Renton 98058 | 408 | |
| George T. Daniel Elementary | 1992 | DE | 11310 SE 248th Street, Kent 98030 | 450 | |
| Glenridge Elementary | 1996 | GR | 19405 - 120th Avenue SE, Renton 98058 | 456 | |
| Grass Lake Elementary | 1971 | GL | 28700 - 191st Place SE, Kent 98042 | 452 | |
| Horizon Elementary | 1990 | HE | 27641 - 144th Avenue SE, Kent 98042 | 504 | |
| Jenkins Creek Elementary | 1987 | JC | 26915 - 186th Avenue SE, Covington 98042 | 398 | |
| Kent Elementary | 1999 | KE | 24700 - 64th Avenue South, Kent 98032 | 464 | |
| Lake Youngs Elementary | 1965 | LY | 19660 - 142nd Avenue SE, Kent 98042 | 524 | |
| Martin Sortun Elementary | 1987 | MS | 12711 SE 248th Street, Kent 98030 | 474 | |
| Meadow Ridge Elementary | 1994 | MR | 27710 - 108th Avenue SE, Kent 98030 | 464 | |
| Meridian Elementary | 1939 | ME | 25621 - 140th Avenue SE, Kent 98042 | 524 | |
| Millennium Elementary | 2000 | ML | 11919 SE 270th Street, Kent 98030 | 498 | |
| Neely-O'Brien Elementary | 1990 | NO | 6300 South 236th Street, Kent 98032 | 440 | |
| Panther Lake Elementary | 1938 | PL | 20831 - 108th Avenue SE, Kent 98031 | 396 | |
| Park Orchard Elementary | 1963 | PO | 11010 SE 232nd Street, Kent 98031 | 480 | |
| Pine Tree Elementary | 1967 | PT | 27825 - 118th Avenue SE, Kent 98030 | 522 | |
| Ridgewood Elementary | 1987 | RW | 18030 - 162nd Place SE, Renton 98058 | 504 | |
| Sawyer Woods Elementary | 1994 | SW | 31135 - 228th Ave SE, Black Diamond 98010 | 504 | |
| Scenic Hill Elementary | 1960 | SH | 26025 Woodland Way South, Kent 98030 | 464 | |
| Soos Creek Elementary | 1971 | SC | 12651 SE 218th Place, Kent 98031 | 408 | |
| Springbrook Elementary | 1969 | SB | 20035 - 100th Avenue SE, Kent 98031 | 398 | |
| Sunrise Elementary | 1992 | SR | 22300 - 132nd Avenue SE, Kent 98042 | 504 | |
| Elementary TOTAL | | | | 13,012 | |
| Cedar Heights Middle School | 1993 | CH | 19640 SE 272 Street, Covington 98042 | 923 | |
| Mattson Middle School | 1981 | MA | 16400 SE 251st Street, Covington 98042 | 804 | |
| Meeker Middle School | 1970 | MK | 12600 SE 192nd Street, Renton 98058 | 890 | |
| Meridian Middle School | 1958 | MJ | 23480 - 120th Avenue SE, Kent 98031 | 790 | |
| Mill Creek MS (former Kent Jr Hi) ² | 2005 / 1952 | MC | 620 North Central Avenue, Kent 98032 | 828 | |
| Northwood Middle School | 1996 | NW | 17007 SE 184th Street, Renton 98058 | 972 | |
| Middle School TOTAL | | | | 5,207 | |
| Kent-Meridian Senior High School | 1951 | KM | 10020 SE 256th Street, Kent 98030 | 1,772 | |
| Kentlake Senior High School | 1997 | KL | 21401 SE 300th Street, Kent 98042 | 1,986 | |
| Kentridge Senior High School | 1968 | KR | 12430 SE 208th Street, Kent 98031 | 2,270 | |
| Kentwood Senior High School | 1981 | KW | 25800 - 164th Avenue SE, Covington 98042 | 2,137 | |
| Senior High TOTAL | | | | 8,165 | |
| Kent Mountain View Academy ³ | 1965 | LC | 22420 Military Road, Des Moines 98198 | 416 | |
| Kent Phoenix Academy ⁴ | 1966 | PH | 11000 SE 264th Street, Kent 98030 | 350 | |
| DISTRICT TOTAL | | | | 27,150 | |

¹ Changes to capacity reflect program changes and new building additions at high schools.

² Mill Creek Middle School and Technology Academy replaced renovated Kent Junior High in 2005.

³ Kent Mountain View Academy serves grades 2-12. The school was formerly known as Kent Learning Center & Grandview Elementary.

⁴ Kent Phoenix Academy is a new non-traditional high school which opened in Fall 2007 in the former Sequoia MS building.

V Six-Year Planning and Construction Plan

At the time of preparation of this Plan in spring of 2008, the following projects are completed or in the planning phase in the District:

- Construction is in progress for additional classroom capacity at Kent-Meridian and Kentlake High Schools.
- Sequoia Middle School was renovated and reconfigured to provide capacity for approximately 350 high school students at the new non-traditional high school, Kent Phoenix Academy in 2007-08.
- Kent Junior High was renovated and renamed and opened in September 2005 as Mill Creek Middle School. Mill Creek also serves the 7-8 Kent Technology Academy program. Construction of Phase I I of the renovation of Mill Creek MS is in progress.
- In February 2006, voters approved construction funding for replacement of Panther Lake Elementary School and a future Elementary School to accommodate new growth.
- Enrollment projections reflect future need for additional capacity at the elementary and high school level. Future facility and site needs are reflected in this Plan.
- A new site was acquired for replacement of Panther Lake Elementary. Sites for potential future schools and facilities are listed in Table 4 and shown on the site map on page 17.
- Some funding is secured for purchase of additional portables and some funding may be provided by impact fees as needed. Sites are based on need for additional capacity.

As a critical component of capital facilities planning, county and city planners and decision-makers are encouraged to consider safe walking conditions for all students when reviewing applications and design plans for new roads and developments. This should include sidewalks for pedestrian safety as well as bus pull-outs and turn-arounds for school buses.

Included in this Plan is an inventory of potential projects and sites identified by the District which are potentially acceptable site alternatives in the future. (See Table 4)

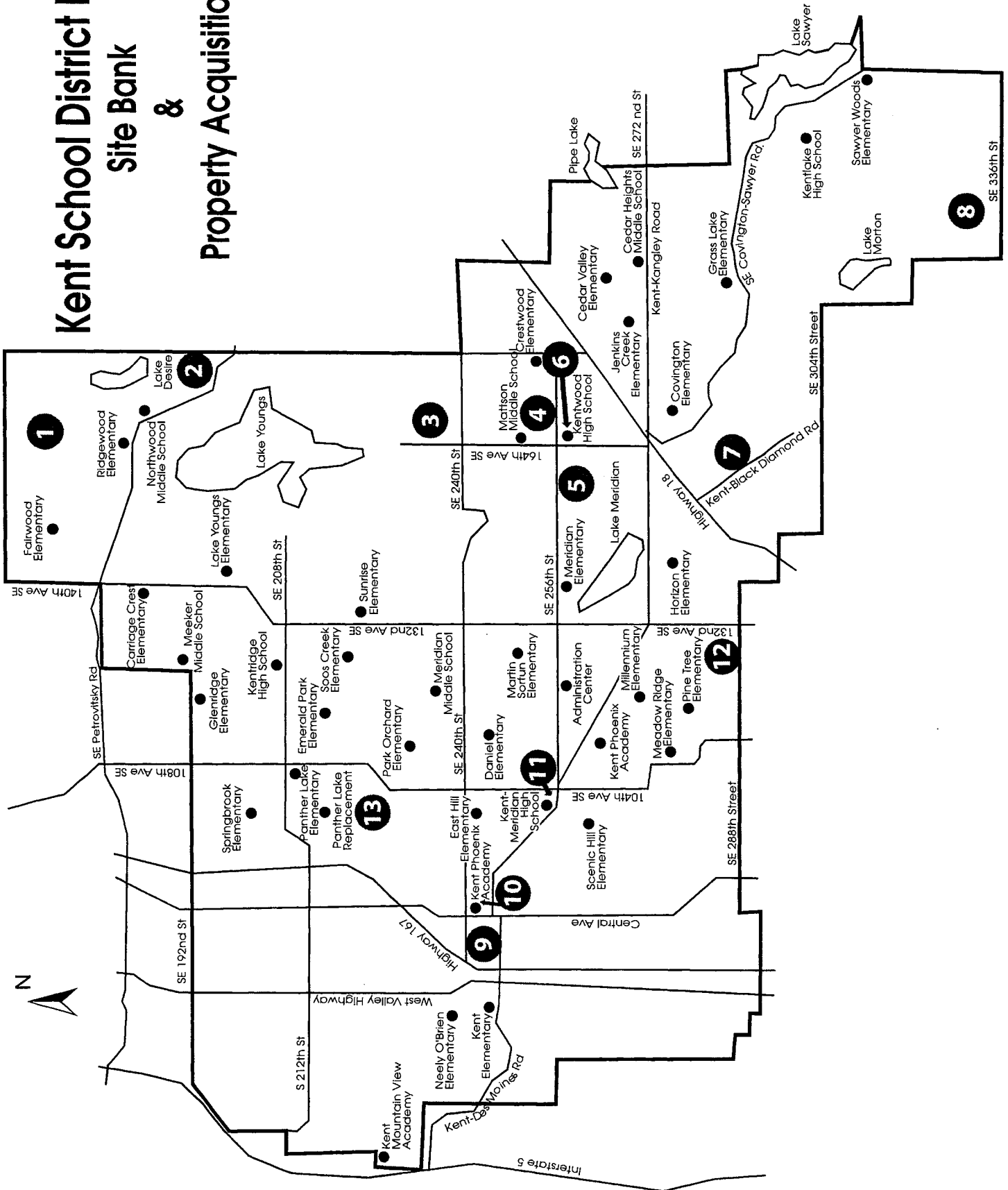
Voter approved bond issues have included funding for the purchase of sites for some of these and future schools, and the sites acquired to date are included in this Plan. Some funding is secured for purchase of additional sites but some may be funded with impact fees as needed. Not all undeveloped properties meet current school construction requirements and some property may be traded or sold to meet future facility needs.

2006 voter approval of \$106M bond issue for capital improvement included the construction funding for a new elementary school, replacement of Panther Lake Elementary, and classroom additions to high schools. Some impact fees will also be applied to those projects. Student Achievement Initiative 728 funds are being utilized to reduce class size and provide extended learning opportunities. Based on community input at public hearings, the Board will continue annual review of standard of service and those decisions will be reflected in the each update of the Capital Facilities Plan.

KENT SCHOOL DISTRICT No. 415
Site Acquisitions and Projects Planned to Provide Additional Capacity

| SCHOOL / FACILITY / SITE | | | | | | LOCATION | Type | Status | Projected Completion Date | Projected Program Capacity | % for new Growth | |
|--|---|--|--|------------------|-------------------|------------------|--|-----------------------|---------------------------|----------------------------|------------------|--|
| Approximate Approximate | | | | | | | | | | | | |
| # on Map | ELEMENTARY | | | | | | <i>(Numbers assigned to future schools may not correlate with number of existing schools.)</i> | | | | | |
| 13 | Replacement for Panther Lake Elementary (F) | | SE 216th Street & 102nd Ave SE | Replacement | Design | 2009 | 500 | 21% | | | | |
| | PL Elementary Site (F) | | SE 216th Street & 102nd Ave SE | Site | Planning | 2008 | | 21% | | | | |
| | Panther Lake Elementary - Replaced in 2009 | | SE 208 Street & 108th Ave SE | Replacement | Planning | 2009 | -396 | N/A | | | | |
| | Elementary # 31 (F) | | To be determined ² | New | Planning | 2011-12 | 500 | 100% | | | | |
| | Site for Elementary # 31 (Unfunded) ¹ | | To be determined ² | Site | Planning | 2011-12 | | 100% | | | | |
| MIDDLE SCHOOL | | | | | | | | | | | | |
| | Mill Creek Middle School Phase II of Renovation | | 620 N. Central Avenue, Kent | Renovation | Construction | 2008 | 828 | N/A | | | | |
| | Sequoia Middle School | | Renovation & Reconfiguration for Kent Phoenix Academy | Renovation | Planning | 2007 | - 771 | N/A | | | | |
| SENIOR HIGH | | | | | | | | | | | | |
| | New Non-traditional High School Kent Phoenix Academy (Funded) | | Former Sequoia Middle School 11000 SE 264th Street, Kent | Renovation | Utilized | 2007-08 | 350 | 100% | | | | |
| | Classroom additions at Kentlake High School (F) | | 21401 SE 300th Street, Kent | Additions | Construction | 2008 | 171 | 100% | | | | |
| | Classroom additions at Kent-Meridian HS (F) | | 10020 SE 256th Street, Kent | Additions | Planning | 2009 | 79 | 100% | | | | |
| TEMPORARY FACILITIES | | | | | | | | | | | | |
| | Relocatables | | For placement as needed | New | Planning | 2008 + | 24 - 31 each | 100% | Additional Capacity | | | |
| SUPPORT FACILITIES | | | | | | | | | | | | |
| | Bus Facility (Unfunded) ¹ | | Near Kent-Meridian High School | New | Planning | TBD ² | N / A | | | | | |
| # on Map | ³ OTHER SITES ACQUIRED | | | | | | Type | Land Use Jurisdiction | | | | |
| 4 | Covington area North (Near Mattson MS) | | SE 251 & 164 SE, Covington 98042 | Elementary | City of Covington | | | | | | | |
| 7 | Covington area South (Scarsella) | | SE 290 & 156 SE, Kent 98042 | Elementary | King County | | | | | | | |
| 5 | Covington area West (Halleson-Wikstrom) | | SE 256 & 154 SE, Covington 98042 | Elementary | City of Covington | | | | | | | |
| 3 | Ham Lake area (Pollard) | | 16820 SE 240, Kent 98042 | Elementary | King County | | | | | | | |
| 8 | SE of Lake Morton area (West property) | | SE 332 & 204 SE, Kent 98042 | Secondary | King County | | | | | | | |
| 2 | Shady Lk area (Sowers, Blaine, Drahota, Paroline) | | 17426 SE 192 Street, Renton 98058 | Elementary | King County | | | | | | | |
| 1 | So. King Co. Activity Center (Nike site) | | SE 167 & 170 SE, Renton 98058 | TBD ² | King County | | | | | | | |
| 12 | South Central site (Plemmons-Yeh-Wms) | | SE 286th Street & 124th Ave. SE, Kent | TBD ² | King County | | | | | | | |
| Notes: | | | | | | | | | | | | |
| ¹ Unfunded facility needs will be reviewed in the future. | | | | | | | | | | | | |
| ² TBD - To be determined - Some sites are acquired but placement, timing and/or configuration have not been determined. | | | | | | | | | | | | |
| ³ Numbers correspond to sites on Map on Page 17. Other site locations are parcels identified in Table 7 on Page 27. | | | | | | | | | | | | |

Kent School District No. 415 Site Bank & Property Acquisitions



VI Relocatable Classrooms

For the purpose of clarification, the term "portables" and the more descriptively accurate term, "relocatables" are used interchangeably in this Plan. The Plan also references use of portables or relocatables as interim or transitional capacity/facilities.

Currently, the District utilizes 131 relocatables to house students in excess of permanent capacity, for program purposes at school locations, and six for other purposes. (See Appendices A B C D)

Based on enrollment projections, program capacity and funded permanent facilities, the District anticipates the need to purchase some additional relocatables during the next six-year period. The continually escalating cost of moving relocatables will increasingly limit the choice between building new relocatables on site and relocating older ones.

During the time period covered by this Plan, the District does not anticipate that all of the District's relocatables will be replaced by permanent facilities. During the useful life of some of the relocatables, the school-age population may decline in some communities and increase in others, and these relocatables provide the flexibility to accommodate the immediate needs of the community.

Portables, or relocatables, may be used as interim or transitional facilities:

1. To prevent overbuilding or overcrowding of permanent school facilities.
2. To cover the gap between the time of demand for increased capacity and completion of permanent school facilities to meet that demand.
3. To meet unique program requirements.

Relocatables currently in use will be evaluated resulting in some being improved and some replaced. Quality concerns will be among those addressed by the next Community Facilities Planning Committee for review of capital facilities needs for the next bond issue.

The Plan projects that the District will use relocatables to accommodate interim housing needs for the next six years and beyond. The use of relocatables, their impacts on permanent facilities, life cycle and operational costs, and the interrelationship between relocatables, emerging technologies and educational restructuring will continue to be examined.

VII Projected Six-Year Classroom Capacity

As stated in Section IV, the program capacity study is periodically updated for changes in special programs and reflects class size fluctuations in Grades K - 4. As shown in the Inventory and Capacity chart in Table 3 on Page 13, the program capacity is also reflected in the capacity and enrollment comparison charts. *(See Tables 5 & 5 A-B-C on pages 20 - 23)*

Enrollment is electronically reported to OSPI on Form P-223 on a monthly basis and funding apportionment is based on Annual Average FTE (AAFTE). The first school day of October is widely recognized as the enrollment "snapshot in time" to report enrollment for the year.

Full Time Equivalent (FTE) student enrollment for October 2007 was 25,745.42. Kindergarten students are reported at .5 although many schools provide full day kindergarten ("FDK") with alternative funding for the second half of the day. Future State-funded Full Day Kindergarten programs will report and project some Kindergarten students at 1.00 FTE at qualifying FDK schools. P-223 FTE excludes Early Childhood Education (preschool) students and College-only Running Start students. *(See Tables 5 & 5 A-B-C on pages 20 - 23)*

In October there were 645 students in 11th and 12th grade participating in the Running Start program at 10-20 different colleges and receiving credits toward both high school and college graduation. 355 of these students attended classes only at the college ("college-only") and are excluded from FTE and headcount for capacity and enrollment comparisons.

Kent School District continues to be the fourth largest district in the state of Washington. P-223 Headcount for October 2007 was 26,862 with kindergarten students counted at 1.0 and excluding ECE and college-only Running Start students. A full headcount of all students enrolled in October 2007 totals 27,584 which includes ECE and college-only Running Start students.

Based on the enrollment forecasts, current inventory and capacity, current standard of service, relocatable capacity, and future planned additional classroom space, the District anticipates having sufficient capacity to house students over the next six years. *(See Table 5 and Tables 5 A-B-C on Pages 20 - 23)*

This does not mean that some schools will not experience overcrowding. There may be significant need for additional portables and/or new schools to accommodate growth within the District and class size reduction mandated under Student Achievement Initiative 728. Some schools, by design, may be opened with relocatables on site. Boundary changes, limited movement of relocatables, zoning changes, market conditions, and educational restructuring will all play a major role in addressing overcrowding and underutilization of facilities in different parts of the District.

**KENT SCHOOL DISTRICT No. 415
PROJECTED ENROLLMENT and CAPACITY**

TOTAL DISTRICT

| SCHOOL YEAR | 2007-2008 | 2008-2009 | 2009-2010 | 2010-2011 | 2011-2012 | 2012-2013 | 2013-2014 | | |
|-------------|-----------|-----------|-----------|-----------|-----------|-----------|-----------|---|---|
| | Actual | P | R | O | J | E | C | T | E |

| | | | | | | | |
|--|--------|--------|--------|--------|--------|--------|--------|
| Permanent Program Capacity ¹ | 26,743 | 27,150 | 27,321 | 27,504 | 27,504 | 28,004 | 28,004 |
|--|--------|--------|--------|--------|--------|--------|--------|

Changes to Permanent Capacity ¹

⁴ Sequoia Middle School renovated & reconfigured as Kent Phoenix Academy High School

^{3/4} Change to Middle School Capacity -771

⁴ Kent Phoenix Academy High School replaced Sequoia Middle School

⁴ High School Program Capacity added 350

⁵ Mill Creek MS Renovation - Phase 2 828

Classroom additions at Kentlake High School (F) 171

Classroom additions at Kent-Meridian High School (F) 79

Replacement with increased capacity for -396

Panther Lake Elementary (Funded) 500

Elementary # 31 (Funded) 500

| | | | | | | | |
|--|--------|--------|--------|--------|--------|--------|--------|
| Permanent Program Capacity Subtotal | 27,150 | 27,321 | 27,504 | 27,504 | 28,004 | 28,004 | 28,004 |
|--|--------|--------|--------|--------|--------|--------|--------|

Interim Relocatable Capacity

Elementary Relocatable Capacity Required 0 48 192 336 24 192 504

Middle School Relocatable Capacity Required ³ 0 0 0 0 0 0 0

Senior High Relocatable Capacity Required 0 0 0 0 0 0 0

| | | | | | | | |
|---|---|----|-----|-----|----|-----|-----|
| Total Relocatable Capacity Required ^{1 & 6} | 0 | 48 | 192 | 336 | 24 | 192 | 504 |
|---|---|----|-----|-----|----|-----|-----|

| | | | | | | | |
|------------------------------------|--------|--------|--------|--------|--------|--------|--------|
| TOTAL CAPACITY ¹ | 27,150 | 27,369 | 27,696 | 27,840 | 28,028 | 28,196 | 28,508 |
|------------------------------------|--------|--------|--------|--------|--------|--------|--------|

| | | | | | | | |
|--|--------|--------|--------|--------|--------|--------|--------|
| TOTAL FTE ENROLLMENT/ PROJECTION ² | 25,745 | 26,064 | 26,480 | 26,564 | 26,743 | 27,014 | 27,363 |
|--|--------|--------|--------|--------|--------|--------|--------|

| | | | | | | | |
|------------------------------------|-------|-------|-------|-------|-------|-------|-------|
| DISTRICT AVAILABLE CAPACITY | 1,405 | 1,305 | 1,216 | 1,276 | 1,285 | 1,182 | 1,145 |
|------------------------------------|-------|-------|-------|-------|-------|-------|-------|

¹ Capacity is based on standard of service for program capacity and updated periodically to reflect program changes.

² FTE = Full Time Equivalent Enrollment (i.e. 1/2 day Kindergarten student = .5 & Full Day Kindergarten student = 1.0 FTE).

³ In Fall 2004, 9th grade moved to the high schools which increased capacity available at Middle School level.

⁴ Sequoia Middle School was renovated and reconfigured as Kent Phoenix Academy High School in Fall 2007.

⁵ Phase II of renovation continues for Mill Creek Middle School & Kent Technology Academy.

⁶ 2007-2008 total classroom relocatable capacity is 1,470.

**KENT SCHOOL DISTRICT No. 415
PROJECTED ENROLLMENT and CAPACITY**

SENIOR HIGH - Grades 9 - 12

| SCHOOL YEAR | 2007-2008 | 2008-2009 | 2009-2010 | 2010-2011 | 2011-2012 | 2012-2013 | 2013-2014 | | |
|-------------|-----------|-----------|-----------|-----------|-----------|-----------|-----------|---|---|
| | Actual | P | R | O | J | E | C | T | E |

| | | | | | | | | |
|---|-------|-------|-------|-------|-------|-------|-------|-------|
| Senior High Permanent Capacity ¹ | 8,165 | 8,515 | 8,686 | 8,765 | 8,765 | 8,765 | 8,765 | 8,765 |
|---|-------|-------|-------|-------|-------|-------|-------|-------|

Changes to High School Capacity

⁴ Kent Phoenix Academy - Replaced Sequoia Middle School
Estimated program capacity 350

Classroom additions at Kentlake HS (F) 171

Classroom additions at Kent-Meridian HS
and KM Technology Academy ⁴ (F) 79

| | | | | | | | | |
|----------|-------|-------|-------|-------|-------|-------|-------|-------|
| Subtotal | 8,515 | 8,686 | 8,765 | 8,765 | 8,765 | 8,765 | 8,765 | 8,765 |
|----------|-------|-------|-------|-------|-------|-------|-------|-------|

| | | | | | | | | |
|--|---|---|---|---|---|---|---|---|
| Relocatable Capacity Required ¹ | 0 | 0 | 0 | 0 | 0 | 0 | 0 | 0 |
|--|---|---|---|---|---|---|---|---|

| | | | | | | | | |
|------------------------------------|--------------|--------------|--------------|--------------|--------------|--------------|--------------|--------------|
| TOTAL CAPACITY ¹ | 8,515 | 8,686 | 8,765 | 8,765 | 8,765 | 8,765 | 8,765 | 8,765 |
|------------------------------------|--------------|--------------|--------------|--------------|--------------|--------------|--------------|--------------|

| | | | | | | | |
|--|-------|-------|-------|-------|-------|-------|-------|
| FTE ENROLLMENT / PROJECTION ² | 8,407 | 8,368 | 8,522 | 8,418 | 8,351 | 8,335 | 8,429 |
|--|-------|-------|-------|-------|-------|-------|-------|

| | | | | | | | |
|-----------------------------------|------------|------------|------------|------------|------------|------------|------------|
| SURPLUS (DEFICIT) CAPACITY | 108 | 318 | 243 | 347 | 414 | 430 | 336 |
|-----------------------------------|------------|------------|------------|------------|------------|------------|------------|

Number of Relocatables Required 0 0 0 0 0 0 0

No Classroom Relocatables required at this time. Some Relocatables used for classroom and program purposes.

¹ Capacity is based on standard of service for program capacity and updated periodically to reflect program changes.

² FTE = Approximate Full Time Equivalent Enrollment, excluding College-only Running Start students.

³ Grade level reconfiguration - All 9th grade students moved to the high schools in Fall 2004.

⁴ Sequoia Middle School was renovated and reconfigured as a new non-traditional high school, Kent Phoenix Academy, and KM added a new Technology Academy program in 2007-08.

**KENT SCHOOL DISTRICT No. 415
PROJECTED ENROLLMENT and CAPACITY**

MIDDLE SCHOOL - Grades 7 - 8

| SCHOOL YEAR | 2007-2008 | 2008-2009 | 2009-2010 | 2010-2011 | 2011-2012 | 2012-2013 | 2013-2014 | | |
|-------------|-----------|-----------|-----------|-----------|-----------|-----------|-----------|---|---|
| | Actual | P | R | O | J | E | C | T | E |

| | | | | | | | | |
|---|-------|-------|-------|-------|-------|-------|-------|-------|
| Middle School Permanent Capacity ¹ | 5,150 | 5,207 | 5,207 | 5,207 | 5,207 | 5,207 | 5,207 | 5,207 |
|---|-------|-------|-------|-------|-------|-------|-------|-------|

| | | | | | | | | |
|-----------------------------------|--|--|--|--|--|--|--|--|
| Changes to Middle School Capacity | | | | | | | | |
|-----------------------------------|--|--|--|--|--|--|--|--|

⁴ Mill Creek Middle School - Kent Junior High re-opened as Mill Creek Middle School #7a in Fall 2005
Phase 2 of Mill Creek Renovation continues in 2007-08

Program capacity of Mill Creek MS and
Kent Technology Academy 828

⁵ Sequoia Middle School renovated and reconfigured as Kent Phoenix Academy High School in 2007-08
MS Capacity changed to High School

-771

| | | | | | | | | |
|----------|-------|-------|-------|-------|-------|-------|-------|-------|
| Subtotal | 5,207 | 5,207 | 5,207 | 5,207 | 5,207 | 5,207 | 5,207 | 5,207 |
|----------|-------|-------|-------|-------|-------|-------|-------|-------|

| | | | | | | | | |
|--|---|---|---|---|---|---|---|---|
| Relocatable Capacity Required ¹ | 0 | 0 | 0 | 0 | 0 | 0 | 0 | 0 |
|--|---|---|---|---|---|---|---|---|

| | | | | | | | | |
|--|--------------|--------------|--------------|--------------|--------------|--------------|--------------|--------------|
| TOTAL CAPACITY ^{1&3} | 5,207 | 5,207 | 5,207 | 5,207 | 5,207 | 5,207 | 5,207 | 5,207 |
|--|--------------|--------------|--------------|--------------|--------------|--------------|--------------|--------------|

| | | | | | | | |
|---|--------------|--------------|--------------|--------------|--------------|--------------|--------------|
| FTE ENROLLMENT / PROJECTION ² | 4,314 | 4,221 | 4,250 | 4,282 | 4,347 | 4,467 | 4,400 |
|---|--------------|--------------|--------------|--------------|--------------|--------------|--------------|

| | | | | | | | |
|-----------------------------------|------------|------------|------------|------------|------------|------------|------------|
| SURPLUS (DEFICIT) CAPACITY | 893 | 986 | 957 | 925 | 860 | 740 | 807 |
|-----------------------------------|------------|------------|------------|------------|------------|------------|------------|

No Classroom Relocatables required at middle schools at this time. Some Relocatables used for classroom and program purposes.

¹ Capacity is based on standard of service for program capacity and updated periodically to reflect program changes.

² FTE = Approximate Full Time Equivalent Enrollment / Projection

³ Grade level reconfiguration - All 9th grade students moved to the high schools in Fall 2004.

⁴ Mill Creek Middle School & Technology Academy - Kent Junior High was renovated and re-opened in Fall 2005 with a Technology Academy serving 7th & 8th grade students from all service areas.
Phase I I of Mill Creek renovation continues in 2007-08.

⁵ Sequoia Middle School was renovated and reconfigured as non-traditional Kent Phoenix Academy High School in 2007-08 and middle school boundaries were reconfigured for six middle schools district-wide.

VIII Finance Plan

The finance plan shown on *Table 6* demonstrates how the Kent School District plans to finance improvements for the years 2008 - 2009 through 2013 - 2014. The financing components include secured and unsecured funding and impact fees. The plan is based on voter approval of future bond issues, collection of impact fees under the State Growth Management Act and voluntary mitigation fees paid pursuant to State Environmental Policy Act.

Kent Elementary #27a, which opened in January 1999 as a replacement for the original Kent Elementary School, was the last elementary school for which the District received state matching funds under the state funding formula. Millennium Elementary #30 which opened in the fall of 2000 was the last elementary school constructed in the District.

Voters approved a \$69.5 million bond issue for Capital Construction and Improvements in February 2002. The bond issue partially funded building additions at three high schools which coincided with moving 9th grade students to the senior high in September 2004. The District received some state matching funds and has utilized impact fees for the senior high school additions.

In February 2006, voters approved a \$106 million bond issue for replacement of Panther Lake Elementary School with increased capacity to be built on a new site, as well as construction of a new elementary school to accommodate growth.

The bond issue also funded Phase II of the renovation for Mill Creek Middle School and renovation of Sequoia Middle School for reconfiguration as a new non-traditional high school. Kent Phoenix Academy opened at the former Sequoia Middle School site in September 2007.

2006 construction funding approval will also provide some additional classrooms to be constructed at Kentlake and Kent-Meridian High Schools. Some impact fees will be utilized for the new construction that will increase capacity.

Enrollment projections reflect future need for additional capacity at the elementary and high school level and unfunded facility needs will be reviewed in the future.

Some funding is secured for additional portables and some will be funded from impact fees.

For the Six-Year Finance Plan, costs of future schools are based on estimates from Kent School District Facilities Department. Please see pages 26-27 for a summary of the cost basis.

**KENT SCHOOL DISTRICT No. 415
SIX-YEAR FINANCE PLAN**

| SCHOOL FACILITIES | * | 2008 | 2009 | 2010 | 2011 | 2012 | 2013 | TOTAL | | | Impact Fees ⁵ Estimated | |
|--|---|--------------|----------------|----------------|--------------|------|------|--------------------------|---|-------------|---------------------------------------|--|
| | | 2008 | 2009 | 2010 | 2011 | 2012 | 2013 | Secured Local & State | Unsecured State ² or Local ³ | Estimated | | |
| PERMANENT FACILITIES | | | | | | | | | | | | |
| Renovation for Kent Phoenix Academy ¹ | F | \$1,650,000 | | | | | | \$1,650,000 | \$825,000 | | \$825,000 | |
| Addition to Kentlake HS ¹⁻² | F | \$5,700,000 | | | | | | \$5,700,000 | \$1,700,000 | | \$4,000,000 | |
| Addition to Kent-Meridian HS ¹⁻² | F | | \$2,500,000 | | | | | \$2,500,000 | \$1,000,000 | | \$1,500,000 | |
| Panther Lake Elem Replacement ¹ | F | | \$25,500,000 | | | | | \$25,500,000 | \$20,145,000 | | \$5,355,000 | |
| Panther Lake Elementary Site ³ | F | \$4,500,000 | | | | | | \$4,500,000 | \$3,555,000 | | \$945,000 | |
| Elementary # 31 ¹⁻²⁻³ | F | | | \$29,750,000 | | | | \$29,750,000 | \$14,000,000 | \$5,600,000 | \$10,150,000 | |
| Elementary Site ³ | U | | \$2,500,000 | | | | | \$2,500,000 | | | \$2,500,000 | |
| TEMPORARY FACILITIES | | | | | | | | | | | | |
| Additional Relocatables ³⁻⁴ | F | | \$258,600 | \$284,460 | | | | \$543,060 | \$300,000 | | \$243,060 | |
| | U | | 2 relocatables | 2 relocatables | | | | | | | | |
| OTHER | | | | | | | | | | | | |
| N/A | | | | | | | | | | | | |
| Totals | | \$11,850,000 | \$30,758,600 | \$284,460 | \$29,750,000 | \$0 | \$0 | \$72,643,060 | \$41,525,000 | \$5,600,000 | \$25,518,060 | |

* F = Funded U = Unfunded

¹ Based on estimates of actual or future construction costs from Facilities Department. (See Page 25 for Cost Basis Summary)

² The District anticipates receiving some state matching funds for these projects.

³ Facility needs are pending review. Some of these projects may be funded with impact fees.

⁴ Cost of Relocatables based on current cost of \$117,550 in 2008 and adjusted for 10% inflation for future years.

⁵ Fees in this column are based on amount of fees collected to date and estimated fees on future units.

VIII Finance Plan - Cost Basis Summary

For impact fee calculations, construction costs are based on cost of the last elementary school, adjusted for inflation, and projected cost of the next elementary school.

| Elementary School | Cost | Projected Cost |
|--|--------------|----------------|
| Millennium Elementary #30 Opened in 2000 | \$12,182,768 | |
| Cost of Panther Lake Elementary Replacement (To open in 2009) | | \$25,500,000 |
| Projected cost of Elementary #31 in 2012 | | \$29,750,000 |

Construction cost of the additions to high schools:

| Senior High School Additions | Projected Cost | Total |
|---------------------------------------|----------------|-------------|
| Kent Phoenix Academy Renovations | \$1,650,000 | |
| 2008 Addition to Kentlake High School | \$5,700,000 | |
| 2009 Addition to Kent-Meridian HS | \$2,500,000 | |
| Construction cost of new HS capacity | | \$9,850,000 |

Site Acquisition Cost

The site acquisition cost is based on an average cost of sites purchased or built on within the last ten years. Please see Table 7 on page 27 for a list of site acquisition costs and averages.

District Adjustment

The impact fee calculations on pages 29 and 30 include a "District Adjustment" which is equal to the amount of increase that the impact fee formulas drive out for this year and adjusted for increase in the Consumer Price Index.

KENT SCHOOL DISTRICT NO. 415

Site Acquisitions & Costs

Average of Sites Purchased or Built on within last 10 Years

| Type & # on Map | School / Site | Year Open / Purchased | Location | Acreage | Cost | Avg cost/acre | Total Average Cost / Acre | | | | | | | | | | | | | | | | |
|---|--|-----------------------|----------------------------------|---------|-------------|---------------|-----------------------------------|------------------------------------|---------------------------|--------|--|-----------|---|-----------|-------------------------------------|-----------|--|-----------|---|-----------|---|---|--|
| Elementary | | | | | | | | | | | | | | | | | | | | | | | |
| 13 / Urban | Panther Lake Elementary Replacement Site | 2008 | 102xx SE 216, Kent 98031 | 9.40 | \$4,500,000 | \$478,723 | | | | | | | | | | | | | | | | | |
| 5 / Urban | Elementary Site (Halleson & Wikstrom) | 2004 | 15435 SE 256 St, Covington 98042 | 10.00 | \$1,093,910 | \$109,391 | | | | | | | | | | | | | | | | | |
| | Elementary Site Subtotal | | | 19.40 | \$5,593,910 | | \$288,346 Elem site average | | | | | | | | | | | | | | | | |
| Middle School | | | | | | | | | | | | | | | | | | | | | | | |
| Urban | Northwood Middle School | 1996 | 17007 SE 184 St, Renton 98058 | 24.42 | \$655,138 | \$26,828 | | | | | | | | | | | | | | | | | |
| 10 / Urban | Mill Creek MS (Kent JH) / McMillan St. assemblage | 2002 | 411-432 McMillan St., Kent 98032 | 1.23 | \$844,866 | \$686,883 | | | | | | | | | | | | | | | | | |
| 12 / Urban | So Central Site - Unincorp KC (Plemmons, Yeh, Wrms) | 1999 | E of 124 SE btw 286-288 Pl (UKC) | 39.36 | \$1,936,020 | \$49,188 | | | | | | | | | | | | | | | | | |
| | Middle School Site Subtotal | | | 65.01 | \$3,436,024 | | \$52,854 Middle Schl Site Avg. | | | | | | | | | | | | | | | | |
| Senior High | | | | | | | | | | | | | | | | | | | | | | | |
| 11 / Urban | K-M High School Addition (Kent 6 & Britt Smith) | 2002 & 2003 | 10002 SE 256th Street | 6.31 | \$3,310,000 | \$524,564 | | | | | | | | | | | | | | | | | |
| Senior High | Kentlake High School (Kombol Morris) | 1997 | 21401 SE 300 St, Kent 98042 | 40.00 | \$537,534 | \$13,438 | | | | | | | | | | | | | | | | | |
| 6 / Urban | Kentwood Sr Hi Addition (Sandhu) | 1998 | 16807 SE 256th Street | 3.83 | \$302,117 | \$78,882 | | | | | | | | | | | | | | | | | |
| | Senior High Site Subtotal | | | 50.14 | \$4,149,651 | | \$82,761 Sr Hi Site Average | | | | | | | | | | | | | | | | |
| <table border="1" style="width: 100%; border-collapse: collapse;"> <tr> <td style="width: 50%; text-align: right;">Total Acreage & Cost</td> <td style="width: 50%; text-align: left;">Total Average Cost / Acre</td> </tr> <tr> <td style="text-align: right;">134.55</td> <td style="text-align: left;">\$97,953</td> </tr> </table> | | | | | | | | Total Acreage & Cost | Total Average Cost / Acre | 134.55 | \$97,953 | | | | | | | | | | | | |
| Total Acreage & Cost | Total Average Cost / Acre | | | | | | | | | | | | | | | | | | | | | | |
| 134.55 | \$97,953 | | | | | | | | | | | | | | | | | | | | | | |
| <p>Note: All rural sites were purchased prior to adoption of Urban Growth Area.</p> <p>Numbers correspond to locations on Site Bank Map on Page 17.</p> <table border="1" style="width: 100%; border-collapse: collapse;"> <tr> <td colspan="2" style="text-align: center;">Properties purchased prior to 1996</td> </tr> <tr> <td style="width: 5%;">1</td> <td>So. King County Activity Center (Nike site) purchased prior to 1996.</td> </tr> <tr> <td>4 / Urban</td> <td>Site - Covington area North (So of Mattson MS) 1984</td> </tr> <tr> <td>3 / Rural</td> <td>Site - Ham Lake east (Pollard) 1992</td> </tr> <tr> <td>7 / Rural</td> <td>Site - South of Covington (Scarsella) 1993</td> </tr> <tr> <td>8 / Rural</td> <td>Site - SE of Lake Morton area (West) 1993</td> </tr> <tr> <td>2 / Urban</td> <td>Site - Shady Lake (Sowers-Blaine-Drahota-Paroline) 1995</td> </tr> <tr> <td>9</td> <td>Old Kent Elementary replaced and currently leased out.</td> </tr> </table> | | | | | | | | Properties purchased prior to 1996 | | 1 | So. King County Activity Center (Nike site) purchased prior to 1996. | 4 / Urban | Site - Covington area North (So of Mattson MS) 1984 | 3 / Rural | Site - Ham Lake east (Pollard) 1992 | 7 / Rural | Site - South of Covington (Scarsella) 1993 | 8 / Rural | Site - SE of Lake Morton area (West) 1993 | 2 / Urban | Site - Shady Lake (Sowers-Blaine-Drahota-Paroline) 1995 | 9 | Old Kent Elementary replaced and currently leased out. |
| Properties purchased prior to 1996 | | | | | | | | | | | | | | | | | | | | | | | |
| 1 | So. King County Activity Center (Nike site) purchased prior to 1996. | | | | | | | | | | | | | | | | | | | | | | |
| 4 / Urban | Site - Covington area North (So of Mattson MS) 1984 | | | | | | | | | | | | | | | | | | | | | | |
| 3 / Rural | Site - Ham Lake east (Pollard) 1992 | | | | | | | | | | | | | | | | | | | | | | |
| 7 / Rural | Site - South of Covington (Scarsella) 1993 | | | | | | | | | | | | | | | | | | | | | | |
| 8 / Rural | Site - SE of Lake Morton area (West) 1993 | | | | | | | | | | | | | | | | | | | | | | |
| 2 / Urban | Site - Shady Lake (Sowers-Blaine-Drahota-Paroline) 1995 | | | | | | | | | | | | | | | | | | | | | | |
| 9 | Old Kent Elementary replaced and currently leased out. | | | | | | | | | | | | | | | | | | | | | | |

**KENT SCHOOL DISTRICT
FACTORS FOR ESTIMATED IMPACT FEE CALCULATIONS**

Student Generation Factors - Single Family

| | |
|--------------------------------|---------------------|
| x Elementary (Grades K - 6) | 0.445 |
| x Middle School (Grades 7 - 8) | 0.118 |
| x Senior High (Grades 9 - 12) | <u>0.245</u> |
| x Total | <u><u>0.808</u></u> |

Student Generation Factors - Multi-Family

| | |
|---------------|---------------------|
| Elementary | 0.296 |
| Middle School | 0.075 |
| Senior High | <u>0.111</u> |
| Total | <u><u>0.482</u></u> |

Projected Increased Student Capacity

| | |
|-----------------|--------------|
| x Elementary | <u>500</u> |
| x Middle School | <u>1,065</u> |
| x Senior High | <u>550</u> |

OSPI - Square Footage per Student

| | |
|-------------------|------------|
| Elementary | <u>90</u> |
| Middle School | <u>117</u> |
| Senior High | <u>130</u> |
| Special Education | <u>144</u> |

Required Site Acreage per Facility

| | |
|----------------------------|-----------|
| x Elementary (required) | <u>11</u> |
| x Middle School (required) | <u>21</u> |
| x Senior High (required) | <u>32</u> |

Average Site Cost / Acre

| | |
|---------------|------------------|
| Elementary | <u>\$288,346</u> |
| Middle School | <u>\$0</u> |
| Senior High | <u>\$0</u> |

New Facility Construction Cost

| | |
|-----------------|---------------------|
| x Elementary * | <u>\$29,750,000</u> |
| x Middle School | <u>\$0</u> |
| x Senior High * | <u>\$9,850,000</u> |

Temporary Facility Capacity & Cost

| | |
|--------------------|------------------|
| Elementary @ 24 | <u>\$117,550</u> |
| Middle School @ 29 | <u>\$0</u> |
| Senior High @ 31 | <u>\$0</u> |

* See cost basis on Pg. 26

Temporary Facility Square Footage

| | |
|-----------------|-----------------------|
| x Elementary | <u>74,340</u> |
| x Middle School | <u>22,128</u> |
| x Senior High | <u>22,960</u> |
| x Total 4% | <u><u>119,428</u></u> |

State Match Credit

| | |
|--------------------------------|---------------|
| Current State Match Percentage | <u>57.06%</u> |
|--------------------------------|---------------|

Permanent Facility Square Footage

| | |
|-----------------|-------------------------|
| x Elementary | <u>1,475,936</u> |
| x Middle School | <u>660,904</u> |
| x Senior High | <u>1,107,101</u> |
| x Total 96% | <u><u>3,243,941</u></u> |

Area Cost Allowance ACA - Cost/Sq. Ft.

| | |
|---|-----------------|
| Area Cost Allowance (Effective July 08) | <u>\$168.79</u> |
|---|-----------------|

Total Facilities Square Footage

| | |
|-----------------|-------------------------|
| x Elementary | <u>1,550,276</u> |
| x Middle School | <u>683,032</u> |
| x Senior High | <u>1,130,061</u> |
| x Total | <u><u>3,363,369</u></u> |

District Average Assessed Value

| | |
|-------------------------|------------------|
| Single Family Residence | <u>\$316,091</u> |
|-------------------------|------------------|

District Average Assessed Value

| | |
|------------------------|------------------|
| Multi-Family Residence | <u>\$102,465</u> |
|------------------------|------------------|

Apartments 72% Condos 28%

Capital Levy Tax Rate/\$1,000

| | |
|--------------------------------------|---------------|
| Current / \$1,000 Tax Rate (1.73255) | <u>\$1.73</u> |
|--------------------------------------|---------------|

Developer Provided Sites / Facilities

| | |
|----------------|----------|
| Value | <u>0</u> |
| Dwelling Units | <u>0</u> |

General Obligation Bond Interest Rate

| | |
|----------------------------|--------------|
| Current Bond Interest Rate | <u>5.11%</u> |
|----------------------------|--------------|

**KENT SCHOOL DISTRICT
IMPACT FEE CALCULATION for SINGLE FAMILY RESIDENCE**

Site Acquisition Cost per Single Family Residence

Formula: ((Acres x Cost per Acre) / Facility Capacity) x Student Generation Factor

| | Required Site Acreage | Average Site Cost/Acre | Facility Capacity | Student Factor | |
|---------------------|-----------------------|------------------------|-------------------|----------------|-------------------|
| A 1 (Elementary) | 11 | \$288,346 | 500 | 0.445 | \$2,822.91 |
| A 2 (Middle School) | 21 | \$0 | 1,065 | 0.118 | \$0 |
| A 3 (Senior High) | 32 | \$0 | 1,000 | 0.245 | \$0 |
| | | | | 0.808 | |
| | | | | A ⇒ | <u>\$2,822.91</u> |

Permanent Facility Construction Cost per Single Family Residence

Formula: ((Facility Cost / Facility Capacity) x Student Factor) x (Permanent/Total Square Footage Ratio)

| | Construction Cost | Facility Capacity | Student Factor | Footage Ratio | |
|---------------------|-------------------|-------------------|----------------|---------------|--------------------|
| B 1 (Elementary) | \$29,750,000 | 500 | 0.445 | 0.96 | \$25,418.40 |
| B 2 (Middle School) | \$0 | 1,065 | 0.118 | 0.96 | \$0 |
| B 3 (Senior High) | \$9,850,000 | 550 | 0.245 | 0.96 | \$4,212.22 |
| | | | 0.808 | | |
| | | | | B ⇒ | <u>\$29,630.62</u> |

Temporary Facility Cost per Single Family Residence

Formula: ((Facility Cost / Facility Capacity) x Student Factor) x (Temporary / Total Square Footage Ratio)

| | Facility Cost | Facility Capacity | Student Factor | Footage Ratio | |
|---------------------|---------------|-------------------|----------------|---------------|----------------|
| C 1 (Elementary) | \$117,550 | 24 | 0.445 | 0.04 | \$87.18 |
| C 2 (Middle School) | \$0 | 29 | 0.118 | 0.04 | \$0 |
| C 3 (Senior High) | \$0 | 31 | 0.245 | 0.04 | \$0 |
| | | | 0.808 | | |
| | | | | C ⇒ | <u>\$87.18</u> |

State Match Credit per Single Family Residence

Formula: Area Cost Allowance x SPI Square Feet per student x District Match % x Student Factor

| | Area Cost Allowance | SPI Sq. Ft. / Student | District Match % | Student Factor | |
|---------------------|---------------------|-----------------------|------------------|----------------|-------------------|
| D 1 (Elementary) | \$168.79 | 90 | 0.5706 | 0.445 | \$3,857.28 |
| D 2 (Middle School) | \$168.79 | 117 | 0 | 0.118 | \$0 |
| D 3 (Senior High) | \$168.79 | 130 | 0.5706 | 0.245 | \$3,067.52 |
| | | | | D ⇒ | <u>\$6,924.80</u> |

Tax Credit per Single Family Residence

| | | | |
|---------------------------------------|-----------|------|------------|
| Average SF Residential Assessed Value | \$316,091 | | |
| Current Capital Levy Rate / \$1,000 | \$1.73 | | |
| Current Bond Interest Rate | 5.11% | | |
| Years Amortized (10 Years) | 10 | TC ⇒ | \$4,205.56 |

Developer Provided Facility Credit

| Facility / Site Value | Dwelling Units | | |
|-----------------------|----------------|------|---|
| 0 | 0 | FC ⇒ | 0 |

Fee Recap

| | | | |
|---|-------------|----------------|--|
| A = Site Acquisition per SF Residence | \$2,822.91 | | |
| B = Permanent Facility Cost per Residence | \$29,630.62 | | |
| C = Temporary Facility Cost per Residence | \$87.18 | | |
| Subtotal | | \$32,540.71 | |
| D = State Match Credit per Residence | \$6,924.80 | | |
| TC = Tax Credit per Residence | \$4,205.56 | | |
| Subtotal | | \$11,130.36 | |
| Total Unfunded Need | | \$21,410.35 | |
| 50% Developer Fee Obligation | | \$10,705 | |
| FC = Facility Credit (if applicable) | | 0 | |
| District Adjustment (See Page 26 for explanation) | | (\$5,401) | |
| Net Fee Obligation per Single Family Residence | | <u>\$5,304</u> | |

**KENT SCHOOL DISTRICT
IMPACT FEE CALCULATION for MULTI-FAMILY RESIDENCE**

Site Acquisition Cost per Multi-Family Residence Unit

Formula: $((\text{Acres} \times \text{Cost per Acre}) / \text{Facility Capacity}) \times \text{Student Generation Factor}$

| | Required Site Acreage | Average Site Cost/Acre | Facility Capacity | Student Factor | |
|---------------------|-----------------------|------------------------|-------------------|----------------|-------------------|
| A 1 (Elementary) | 11 | \$288,346 | 500 | 0.296 | \$1,877.71 |
| A 2 (Middle School) | 21 | \$0 | 1,065 | 0.075 | \$0 |
| A 3 (Senior High) | 32 | \$0 | 1,000 | 0.111 | \$0 |
| | | | | 0.482 | |
| | | | | A ⇒ | <u>\$1,877.71</u> |

Permanent Facility Construction Cost per Multi-Family Residence Unit

Formula: $((\text{Facility Cost} / \text{Facility Capacity}) \times \text{Student Factor}) \times (\text{Permanent} / \text{Total Square Footage Ratio})$

| | Construction Cost | Facility Capacity | Student Factor | Footage Ratio | |
|---------------------|-------------------|-------------------|----------------|---------------|--------------------|
| B 1 (Elementary) | \$29,750,000 | 500 | 0.296 | 0.96 | \$16,907.52 |
| B 2 (Middle School) | \$0 | 1,065 | 0.075 | 0.96 | \$0 |
| B 3 (Senior High) | \$9,850,000 | 550 | 0.111 | 0.96 | \$1,908.39 |
| | | | 0.482 | | |
| | | | | B ⇒ | <u>\$18,815.91</u> |

Temporary Facility Cost per Multi-Family Residence Unit

Formula: $((\text{Facility Cost} / \text{Facility Capacity}) \times \text{Student Factor}) \times (\text{Temporary} / \text{Total Square Footage Ratio})$

| | Facility Cost | Facility Capacity | Student Factor | Footage Ratio | |
|---------------------|---------------|-------------------|----------------|---------------|----------------|
| C 1 (Elementary) | \$117,550 | 24 | 0.296 | 0.04 | \$57.99 |
| C 2 (Middle School) | \$0 | 29 | 0.075 | 0.04 | \$0 |
| C 3 (Senior High) | \$0 | 31 | 0.111 | 0.04 | \$0 |
| | | | 0.482 | | |
| | | | | C ⇒ | <u>\$57.99</u> |

State Match Credit per Multi-Family Residence Unit

Formula: $\text{Area Cost Allowance} \times \text{SPI Square Feet per student} \times \text{District Match \%} \times \text{Student Factor}$

| | Area Cost Allowance | SPI Sq. Ft. / Student | District Match % | Student Factor | |
|---------------------|---------------------|-----------------------|------------------|----------------|-------------------|
| D 1 (Elementary) | \$168.79 | 90 | 0.5706 | 0.296 | \$2,565.74 |
| D 2 (Middle School) | \$168.79 | 117 | 0 | 0.075 | \$0 |
| D 3 (Senior High) | \$168.79 | 130 | 0.5706 | 0.111 | \$1,389.78 |
| | | | | D ⇒ | <u>\$3,955.52</u> |

Tax Credit per Multi-Family Residence Unit

| | | | |
|---------------------------------------|-----------|------|------------|
| Average MF Residential Assessed Value | \$102,465 | | |
| Current Capital Levy Rate / \$1,000 | \$1.73 | | |
| Current Bond Interest Rate | 5.11% | | |
| Years Amortized (10 Years) | 10 | TC ⇒ | \$1,363.29 |

Developer Provided Facility Credit

| Facility / Site Value | Dwelling Units | | |
|-----------------------|----------------|------|---|
| 0 | 0 | FC ⇒ | 0 |

Fee Recap

| | | |
|--|-------------|----------------|
| A = Site Acquisition per Multi-Family Unit | \$1,877.71 | |
| B = Permanent Facility Cost per MF Unit | \$18,815.91 | |
| C = Temporary Facility Cost per MF Unit | \$57.99 | |
| Subtotal | | \$20,751.61 |
| D = State Match Credit per MF Unit | \$3,955.52 | |
| TC = Tax Credit per MF Unit | \$1,363.29 | |
| Subtotal | - | \$5,318.80 |
| Total Unfunded Need | \$15,432.81 | |
| 50% Developer Fee Obligation | | \$7,716 |
| FC = Facility Credit (if applicable) | | 0 |
| District Adjustment (See Page 26 for explanation) | | (\$4,450) |
| Net Fee Obligation per Multi-Family Residence Unit | | \$3,266 |

IX Summary of Changes to April 2007 Capital Facilities Plan

The Capital Facilities Plan (the "Plan") is updated annually based on previous Plans in effect since 1993. The primary changes from the April 2007 Plan are summarized here.

Voters approved funding for replacement and expansion of Panther Lake Elementary School on a new site, a future new elementary school, classroom additions at high schools to accommodate new growth, Phase II of the renovation at Mill Creek Middle School and renovation of Sequoia Middle School reconfigured as new non-traditional high school named Kent Phoenix Academy.

Changes to capacity continue to reflect fluctuations in class size as well as program changes. Reduction in class size and extended learning opportunities for Student Achievement Initiative 728 are reflected in this update. Changes in relocatables (portables) or transitional capacity reflect use, purchase, sale, surplus and/or movement between facilities.

The student enrollment forecast is updated annually. Methodology for six-year Kindergarten projections was modified to meet the requirements for State Funded Full Day Kindergarten programs.

The district expects to receive state matching funds for projects in this Plan and tax credit factors are updated annually. Student generation factors were updated this year. Unfunded site and facility needs will be reviewed in the future.

Changes to Impact Fee Calculation Factors include:

| ITEM | Grade/Type | FROM | TO | Comments |
|---|------------|-----------|-----------|------------------------------|
| Student Generation Factor Single Family (SF) | Elem | 0.444 | 0.445 | |
| | MS | 0.148 | 0.118 | |
| | SH | 0.252 | 0.245 | |
| | Total | 0.844 | 0.808 | Biennial Update |
| Student Generation Factor Multi-Family (MF) | Elem | 0.293 | 0.296 | |
| | MS | 0.058 | 0.075 | |
| | SH | 0.094 | 0.111 | |
| | Total | 0.445 | 0.482 | Biennial Update |
| State Match Credit | | 55.94% | 57.06% | Per OSPI Website |
| Area Cost Allowance (former Boeckh Index) | | \$162.43 | \$168.79 | Per OSPI Website |
| Average Assessed Valuation (AV) | SF | \$282,605 | \$316,091 | Per Puget Sound ESD |
| AV - Average of Condominiums & Apts. | MF | \$89,689 | \$102,465 | Per Puget Sound ESD |
| Debt Service Capital Levy Rate / \$1000 | | \$1.28 | \$1.73 | Per King Co. Assessor Report |
| General Obligation Bond Interest Rate | | 4.08% | 5.11% | Market Rate |
| Impact Fee - Single Family | SF | \$5,110 | \$5,304 | Change to fee + \$194 |
| Impact Fee - Multi-Family | MF | \$3,146 | \$3,266 | Change to fee + \$120 |

X

Appendixes

Appendix A: Calculations of Capacities for Elementary Schools

Appendix B: Calculations of Capacities for Middle Schools

Appendix C: Calculations of Capacities for Senior High Schools

Appendix D: Use of Relocatables

Appendix E: Student Generation Factor Survey

**KENT SCHOOL DISTRICT No. 415
STANDARD of SERVICE - PROGRAM CAPACITY - INVENTORY of RELOCATABLES - FTE and HEADCOUNT ENROLLMENT**

| K S D ELEMENTARY SCHOOL | ABR | Number of Std or High Cap Classrooms | Std/High Cap Capacity at 24 average ¹ | SE/IP | | Special Program Capacity | 2007-2008 Program Capacity ² | Program Use | | Classroom Use Relocatables | Relocatable Capacity at 24 average ¹ | 10/1/2007 P223 FTE ⁴ Enrollment | 10/1/2007 P223 Hdcount Enrollment | F D K ⁵ |
|-------------------------------------|-------|--|--|------------|------------|--------------------------------|---|----------------|--------------|----------------------------------|---|--|---|--------------------------|
| | | | | ELL | CR | | | Relocatables | Relocatables | | | | | |
| Carriage Crest | CC | 18 | 432 | 5 | 5 | 20 | 452 | 1 | 0 | 0 | 0 | 416.14 | 444 | T |
| Cedar Valley | CV/e | 16 | 384 | 6 | 6 | 18 | 402 | 2 | 0 | 0 | 0 | 367.00 | 395 | I |
| Covington | CO/e | 20 | 480 | 5 | 5 | 18 | 498 | 1 | 0 | 0 | 0 | 508.50 | 543 | H |
| Crestwood | CW | 19 | 456 | 2 | 2 | 0 | 456 | 4 | 1 | 24 | 24 | 483.00 | 516 | T |
| East Hill | EH | 17 | 408 | 7 | 7 | 56 | 464 | 3 | 2 | 48 | 48 | 543.50 | 577 | I |
| Emerald Park | EP | 21 | 504 | 2 | 2 | 0 | 504 | 2 | 0 | 0 | 0 | 494.03 | 530 | T |
| Fairwood | FW/e | 17 | 408 | 3 | 3 | 0 | 408 | 3 | 0 | 0 | 0 | 389.16 | 418 | T |
| George T. Daniel Elem | DE | 18 | 432 | 5 | 5 | 18 | 450 | 1 | 0 | 0 | 0 | 453.11 | 494 | A |
| Glennridge | GR | 19 | 456 | 4 | 4 | 0 | 456 | 2 | 0 | 0 | 0 | 375.00 | 398 | T |
| Grass Lake | GL/h | 18 | 432 | 4 | 4 | 20 | 452 | 1 | 0 | 0 | 0 | 414.73 | 437 | H |
| Horizon | HE | 21 | 504 | 2 | 2 | 0 | 504 | 3 | 0 | 0 | 0 | 527.17 | 560 | H |
| Jenkins Creek | JC | 15 | 360 | 7 | 7 | 38 | 398 | 3 | 1 | 24 | 24 | 366.43 | 392 | I |
| Kent Elem. | KE/eh | 17 | 408 | 6 | 6 | 56 | 464 | 2 | 2 | 48 | 48 | 491.50 | 528 | A |
| Lake Youngs | LY/h | 21 | 504 | 7 | 7 | 20 | 524 | 0 | 0 | 0 | 0 | 490.11 | 516 | H |
| Martin Sortun | MS | 19 | 456 | 3 | 3 | 18 | 474 | 1 | 1 | 24 | 24 | 499.50 | 534 | I |
| Meadow Ridge | MR/e | 17 | 408 | 6 | 6 | 56 | 464 | 0 | 4 | 96 | 96 | 453.62 | 498 | A |
| Meridian Elementary | ME/h | 21 | 504 | 3 | 3 | 20 | 524 | 3 | 2 | 48 | 48 | 526.61 | 560 | T |
| Millennium Elementary | ML | 20 | 480 | 3 | 3 | 18 | 498 | 0 | 0 | 0 | 0 | 506.50 | 550 | K |
| Neely-O'Brien | NO | 16 | 384 | 5 | 5 | 56 | 440 | 5 | 5 | 120 | 120 | 621.05 | 676 | I |
| Panther Lake | PL | 15 | 360 | 3 | 3 | 36 | 396 | 7 | 0 | 0 | 0 | 490.50 | 531 | K |
| Park Orchard | PO | 18 | 432 | 7 | 7 | 48 | 480 | 2 | 0 | 0 | 0 | 438.05 | 477 | A |
| Pine Tree | PT/h | 21 | 504 | 4 | 4 | 18 | 522 | 3 | 0 | 0 | 0 | 477.58 | 503 | K |
| Ridgewood | RW/h | 21 | 504 | 1 | 1 | 0 | 504 | 1 | 2 | 48 | 48 | 495.75 | 534 | T |
| Sawyer Woods | SW | 21 | 504 | 2 | 2 | 0 | 504 | 0 | 0 | 0 | 0 | 410.50 | 435 | H |
| Scenic Hill | SH | 17 | 408 | 6 | 6 | 56 | 464 | 3 | 1 | 24 | 24 | 461.00 | 499 | A |
| Soos Creek | SC/e | 17 | 408 | 4 | 4 | 0 | 408 | 3 | 0 | 0 | 0 | 352.00 | 378 | T |
| Springbrook | SB | 15 | 360 | 5 | 5 | 38 | 398 | 2 | 0 | 0 | 0 | 376.00 | 401 | I |
| Sunrise | SR/h | 21 | 504 | 2 | 2 | 0 | 504 | 3 | 0 | 0 | 0 | 521.28 | 557 | T |
| Kent Mtn. View Academy | MV | 14 | 356 | 3 | 3 | 60 | 416 | 0 | 0 | 0 | 0 | 75.29 | 77 | |
| Elementary TOTAL³ | | 530 | 12,740 | 122 | 122 | 688 | 13,428 | 61 | 21 | 504 | 13,024.61 | 13,958 | | |

¹ Elementary classroom capacity is based on average of 24; 18-22 in K-3, 23 in Grade 4 & 29 in Grades 5-6. Includes adjustments for class size reduction or program changes.
² Kent School District Standard of Service reserves some rooms for pull-out programs. ie. 20 Total = 17 Standard + 1 Computer Lab + 1 Music + 1 Integrated Program classroom.
³ Elementary schools have 100% space utilization rate. ⁴ Elementary FTE reports Kindergarten @ .5 - P223 Headcount reports Kindergarten @ 1.0. Excludes ECE preschoolers.
⁵ FDK = Full Day Kindergarten T = Tuition-based I = I-728 Funded Schoolwide K = KAI Title I Funded A = State Apportionment Funded H = Half Day Kindergarten only

**KENT SCHOOL DISTRICT No. 415
STANDARD OF SERVICE - PROGRAM CAPACITY - INVENTORY OF RELOCATABLES - FTE and HEADCOUNT ENROLLMENT**

| K S D MIDDLE SCHOOL | # of Std Clsrms | Standard Capacity ² at 25-29 Cls | SE/IP @ 85% Utilization | | Special Ed ELL Capacity @ 85% Utilization | Spec Prgm Clsrms | Special ¹ Program Capacity @ 85% Utilization | 2007-2008 Program Capacity ² @ 85% Utilization | Program Use Relocatables | Classroom Use Relocatables | Relocatable Capacity at 29 ea. | 10/1/2007 P223 FTE ³ Enrollment | 10/1/2007 Headcount ³ Enrollment |
|---|-----------------------|--|----------------------------|-----|--|------------------------|--|--|--------------------------------|----------------------------------|--------------------------------------|--|---|
| | | | ELL | Cls | | | | | | | | | |
| Cedar Heights Middle School | CH | 32 | 782 | 9 | 93 | 2 | 48 | 923 | 0 | 5 | 145 | 835.06 | 837 |
| Mattison Middle School | MA | 24 | 585 | 6 | 59 | 7 | 160 | 804 | 9 | 0 | 0 | 665.20 | 666 |
| Meeker Middle School | MK | 33 | 807 | 4 | 59 | 1 | 24 | 890 | 0 | 0 | 0 | 651.20 | 653 |
| Meridian Middle School | MJ | 26 | 631 | 5 | 64 | 4 | 95 | 790 | 3 | 6 | 174 | 711.60 | 713 |
| Mill Creek Middle School | MC | 30 | 729 | 5 | 51 | 2 | 48 | 828 | 0 | 2 | 58 | 775.19 | 776 |
| Northwood Middle School | NW | 33 | 807 | 4 | 46 | 5 | 119 | 972 | 0 | 0 | 0 | 617.20 | 618 |
| Kent Mountain View Academy (Grades 2 - 12) Middle School Grade 7 - 8 Enrollment | | | | | | | | | | | | | |
| Middle School TOTAL | | 178 | 4,341 | 33 | 372 | 21 | 494 | 5,207 | 12 | 13 | 377 | 4,313.45 | 4,321 |

APPENDIX B

| K S D SENIOR HIGH SCHOOL | # of Std Clsrms | Standard Capacity ² at 25-31 Cls | SE/IP @ 85% Utilization | | Special Ed ELL Capacity @ 85% Utilization | Spec Prgm Clsrms | Special ¹ Program Capacity @ 85% Utilization | 2007-2008 Program Capacity ² @ 85% Utilization | Program Use Relocatables | Classroom Use Relocatables | Relocatable Capacity at 31 ea. | 10/1/2007 P223 FTE ³ Enrollment | 10/1/2007 Headcount ³ Enrollment |
|--|-----------------------|--|----------------------------|-----|--|------------------------|--|--|--------------------------------|----------------------------------|--------------------------------------|--|---|
| | | | ELL | Cls | | | | | | | | | |
| Kent-Meridian Senior High | KM | 53 | 1,376 | 8 | 110 | 12 | 286 | 1,772 | 1 | 5 | 155 | 1,759.80 | 1,790 |
| Kentlake Senior High | KL | 58 | 1,508 | 12 | 145 | 14 | 333 | 1,986 | 0 | 5 | 155 | 1,791.40 | 1,829 |
| Kentridge Senior High | KR | 69 | 1,766 | 11 | 123 | 16 | 381 | 2,270 | 0 | 4 | 124 | 2,197.80 | 2,229 |
| Kentwood Senior High | KW | 65 | 1,692 | 5 | 51 | 17 | 394 | 2,137 | 4 | 5 | 155 | 2,160.76 | 2,230 |
| Kent Mountain View Academy (Grades 2 - 12) Senior High Grade 9 - 12 Enrollment | | | | | | | | | | | | | |
| Kent Phoenix Academy | PH | | | | | | | See Elem | | | | 150.20 | 158 |
| Regional Justice Center | RJ | N/A | | | | | | 350 | | | | 324.40 | 324 |
| | | | | | | | | N/A | | | | 23.00 | 23 |
| Senior High TOTAL | | 245 | 6,342 | 36 | 429 | 59 | 1,394 | 8,515 | 5 | 19 | 589 | 8,407.36 | 8,583 |

APPENDIX C

| | | | | | | | | | | | | |
|-----------------------|-----|--------|-----|-------|----|-------|--------|----|----|-------|-----------|--------|
| DISTRICT TOTAL | 953 | 23,423 | 191 | 1,489 | 80 | 1,888 | 27,150 | 78 | 53 | 1,470 | 25,745.42 | 26,862 |
|-----------------------|-----|--------|-----|-------|----|-------|--------|----|----|-------|-----------|--------|

¹ Special Program capacity includes classrooms requiring specialized use such as Special Education, Career & Technical Education Programs, Computer Labs, etc.
² Secondary school capacity is adjusted for 85% utilization rate and i-728 class size reduction in 7th & 10th grade English classes. 9th grade moved to HS in 2004.
³ Enrollment is reported on FTE & Headcount basis. P223 Headcount excludes ECE & College-only Running Start students. Full headcount including ECE & RS = 27,584.
 Some totals may be slightly different due to rounding.

KENT SCHOOL DISTRICT No. 415

USE of RELOCATABLES

| Relocatable Use | 2007-2008 | | * 2008-2009 | | 2009-2010 | | 2010-2011 | | 2011-2012 | | 2012-2013 | | 2013-2014 | |
|---|---------------------|------------------|---------------------|------------------|---------------------|------------------|---------------------|------------------|---------------------|------------------|---------------------|------------------|---------------------|------------------|
| | No. of Relocatables | Student Capacity | No. of Relocatables | Student Capacity | No. of Relocatables | Student Capacity | No. of Relocatables | Student Capacity | No. of Relocatables | Student Capacity | No. of Relocatables | Student Capacity | No. of Relocatables | Student Capacity |
| Relocatables for classroom use | 53 | | 53 | | 53 | | 53 | | 53 | | 53 | | 53 | |
| Relocatables for program use (ie. Computer labs, music, etc.) | 78 | | 78 | | 78 | | 78 | | 78 | | 78 | | 78 | |
| Elementary Capacity Required @ 24 | 0 | 0 | 2 | 48 | 8 | 192 | 14 | 336 | 1 | 24 | 8 | 192 | 21 | 504 |
| Middle School Capacity Required @ 29 * | 0 | 0 | 0 | 0 | 0 | 0 | 0 | 0 | 0 | 0 | 0 | 0 | 0 | 0 |
| Senior High Capacity Required @ 31 | 0 | 0 | 0 | 0 | 0 | 0 | 0 | 0 | 0 | 0 | 0 | 0 | 0 | 0 |
| # of Relocatables Utilized | 131 | | 131 | | 131 | | 131 | | 131 | | 131 | | 131 | |
| Classroom Relocatable/Capacity Required | 0 | 0 | 2 | 48 | 8 | 192 | 14 | 336 | 1 | 24 | 8 | 192 | 21 | 504 |
| Plan for Allocation of Required Classroom Relocatable Facilities included in Finance Plan: | | | | | | | | | | | | | | |
| Elementary | 0 | | 2 | | 8 | | 14 | | 1 | | 8 | | 21 | |
| Middle School | 0 | | 0 | | 0 | | 0 | | 0 | | 0 | | 0 | |
| Senior High | 0 | | 0 | | 0 | | 0 | | 0 | | 0 | | 0 | |
| Total | 0 | * | 2 | | 8 | | 14 | | 1 | | 8 | | 21 | |

* Use of additional relocatables for classrooms or special programs is based on need and fluctuations of enrollment at each school.
 Grade Level Reconfiguration - In 2004, 9th grade students moved to high schools creating sufficient permanent capacity at middle schools.
 Although relocatables are utilized for a wide variety of purposes, new construction and boundary adjustments have been timed to minimize the requirement for relocatables.

KENT SCHOOL DISTRICT No. 415

Student Generation Factor Survey

| Edulog # | Single Family Developments | Elementary Area | Total Units | S t u d e n t s | | | | Student Generation Factor | | | |
|--------------|---|-----------------|--------------|-----------------|------------|------------|------------|---------------------------|--------------|--------------|--------------|
| | | | | Total | Elem | MS | HS | Total | Elem | MS | HS |
| | | | | | | | | | | | |
| 78 | Crofton Hills / Savana / The Reserve / Stonefield - Covington | CO | 351 | 360 | 169 | 62 | 129 | 1,026 | 0.481 | 0.177 | 0.368 |
| 187 | Eastland Meadows - Kent | SC | 13 | 21 | 9 | 2 | 10 | 1,615 | 0.692 | 0.154 | 0.769 |
| 399 | Fern Crest East - Kent | SR | 171 | 132 | 86 | 20 | 26 | 0.772 | 0.503 | 0.117 | 0.152 |
| 400 | Fern Crest West - Kent | SR | 130 | 79 | 47 | 10 | 22 | 0.608 | 0.362 | 0.077 | 0.169 |
| 228 | Kentlake Highlands - Kent | SW | 97 | 87 | 47 | 13 | 27 | 0.897 | 0.485 | 0.134 | 0.278 |
| 389 | Parke Meadows & North Parke Meadows - Covington | CW | 106 | 117 | 70 | 15 | 32 | 1.104 | 0.660 | 0.142 | 0.302 |
| 410 | Rhododendron Estates - Kent | ML | 16 | 37 | 24 | 6 | 7 | 2.313 | 1.500 | 0.375 | 0.438 |
| 419 | Southridge - Eagle Crest - Park View - Kent | HE | 219 | 164 | 99 | 24 | 41 | 0.749 | 0.452 | 0.110 | 0.187 |
| 420 | Tamarack Ridge - Covington | CW | 134 | 78 | 40 | 12 | 26 | 0.582 | 0.299 | 0.090 | 0.194 |
| 179 | The Parks - Renton | RW | 172 | 153 | 71 | 21 | 61 | 0.890 | 0.413 | 0.122 | 0.355 |
| 337 | The Parks at Riverview - Kent | NO | 148 | 38 | 20 | 9 | 9 | 0.257 | 0.135 | 0.061 | 0.061 |
| 416 | Trovitsky Park - Renton | RW | 167 | 124 | 81 | 11 | 32 | 0.743 | 0.485 | 0.066 | 0.192 |
| 417 | Wood Creek - Covington | CW | 154 | 128 | 73 | 16 | 39 | 0.831 | 0.474 | 0.104 | 0.253 |
| Total | | | 1,878 | 1,518 | 836 | 221 | 461 | 0.808 | 0.445 | 0.118 | 0.245 |

| Edulog # | Multi-Family Developments | Elementary Area | Total Units | S t u d e n t s | | | | Student Generation Factor | | | |
|--------------|-----------------------------------|-----------------|--------------|-----------------|------------|-----------|------------|---------------------------|--------------|--------------|--------------|
| | | | | Total | Elem | MS | HS | Total | Elem | MS | HS |
| | | | | | | | | | | | |
| 418 | Adagio Apartments - Covington | CO | 200 | 61 | 28 | 12 | 21 | 0.305 | 0.140 | 0.060 | 0.105 |
| 412 | Alderbrook Apartments - Kent | EH | 207 | 118 | 78 | 18 | 22 | 0.570 | 0.377 | 0.087 | 0.106 |
| 156 | Brentwood Townhomes - Kent | SH | 81 | 51 | 25 | 14 | 12 | 0.630 | 0.309 | 0.173 | 0.148 |
| 146 | Fairwood Pond Apartments - Renton | FW | 194 | 33 | 21 | 7 | 5 | 0.170 | 0.108 | 0.036 | 0.026 |
| 414 | Park Place Apartments - Kent | SH | 51 | 88 | 62 | 9 | 17 | 1.725 | 1.216 | 0.176 | 0.333 |
| 102 | Rock Creek Landing - Kent | PL | 211 | 77 | 41 | 14 | 22 | 0.365 | 0.194 | 0.066 | 0.104 |
| 413 | Silver Springs Apartments - Kent | PL | 251 | 163 | 108 | 21 | 34 | 0.649 | 0.430 | 0.084 | 0.135 |
| 192 | Sunrise at Benson Condos - Kent | GR | 88 | 27 | 17 | 1 | 9 | 0.307 | 0.193 | 0.011 | 0.102 |
| Total | | | 1,283 | 618 | 380 | 96 | 142 | 0.482 | 0.296 | 0.075 | 0.111 |