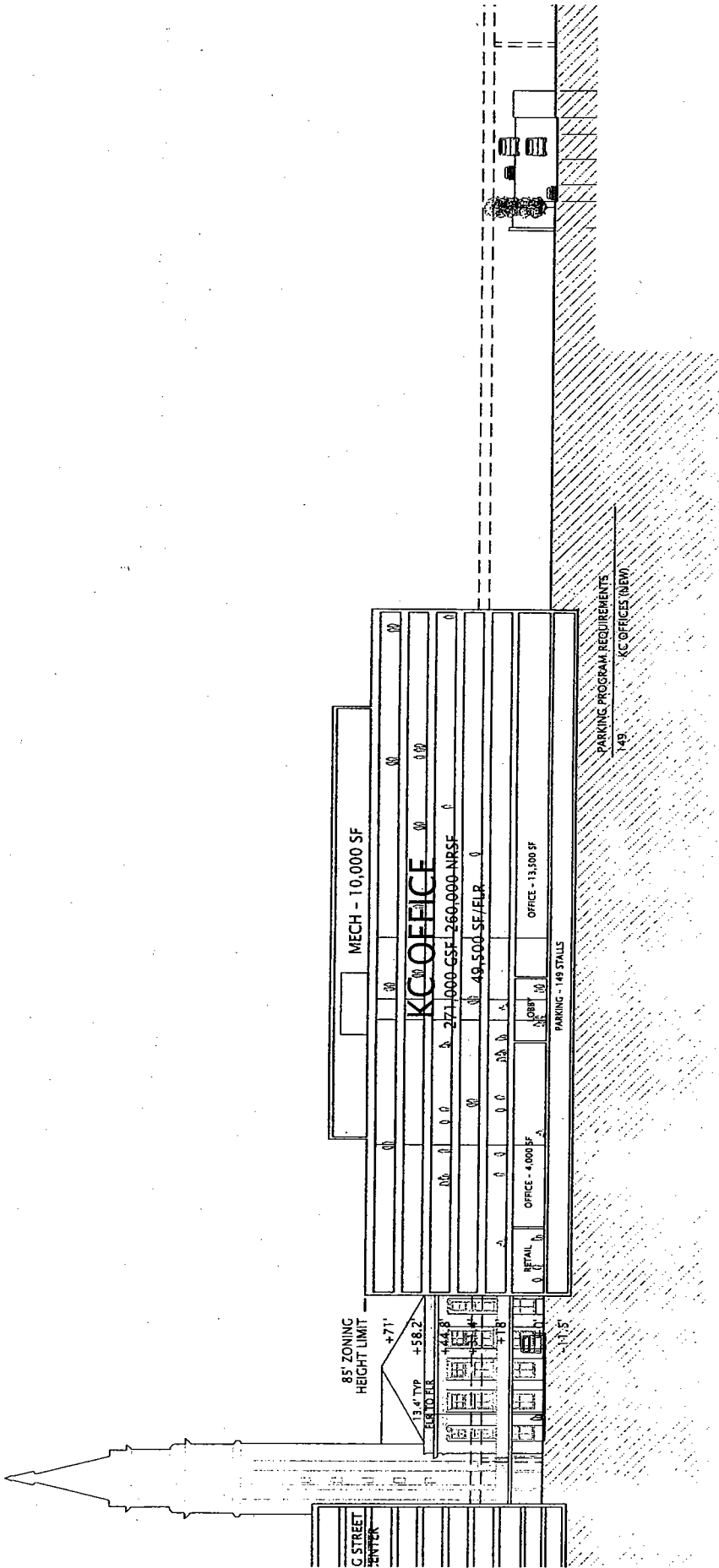


**FIGURE C.1**  
North Kingdom  
Parking Lot

*Distributed @ 4/7/04  
BFM mtg.*



**GENERAL ASSUMPTIONS:**

KC LOT (240' x 200')  
WELLER STREET BRIDGE EASEMENT (40' x 200')  
PSA LOT (235' x 200')  
TOTAL SITE AREA  
KC GROSS OFFICE SQUARE FOOTAGE

**PARKING CALCULATIONS**

48,000 SF  
8,000 SF  
47,000 SF  
103,000 SF  
271,000 SF

(GSF LESS 10,000 SF MECH)  
ALLOWABLE PER CODE  
SUBTOTAL  
REQUIRED STALLS FOR  
NEW KC OFFICE BUILDING

**OFFICE FLOOR AREAS**

10,000 SF  
12,600 SF  
49,500 SF EA  
271,000 SF

MECHANICAL (25% OF ROOF)  
GROUND FLOOR OFFICE/LOADING  
FIVE OFFICE LEVELS  
TOTAL ASSUMED OFFICE GSF

2/13/04

