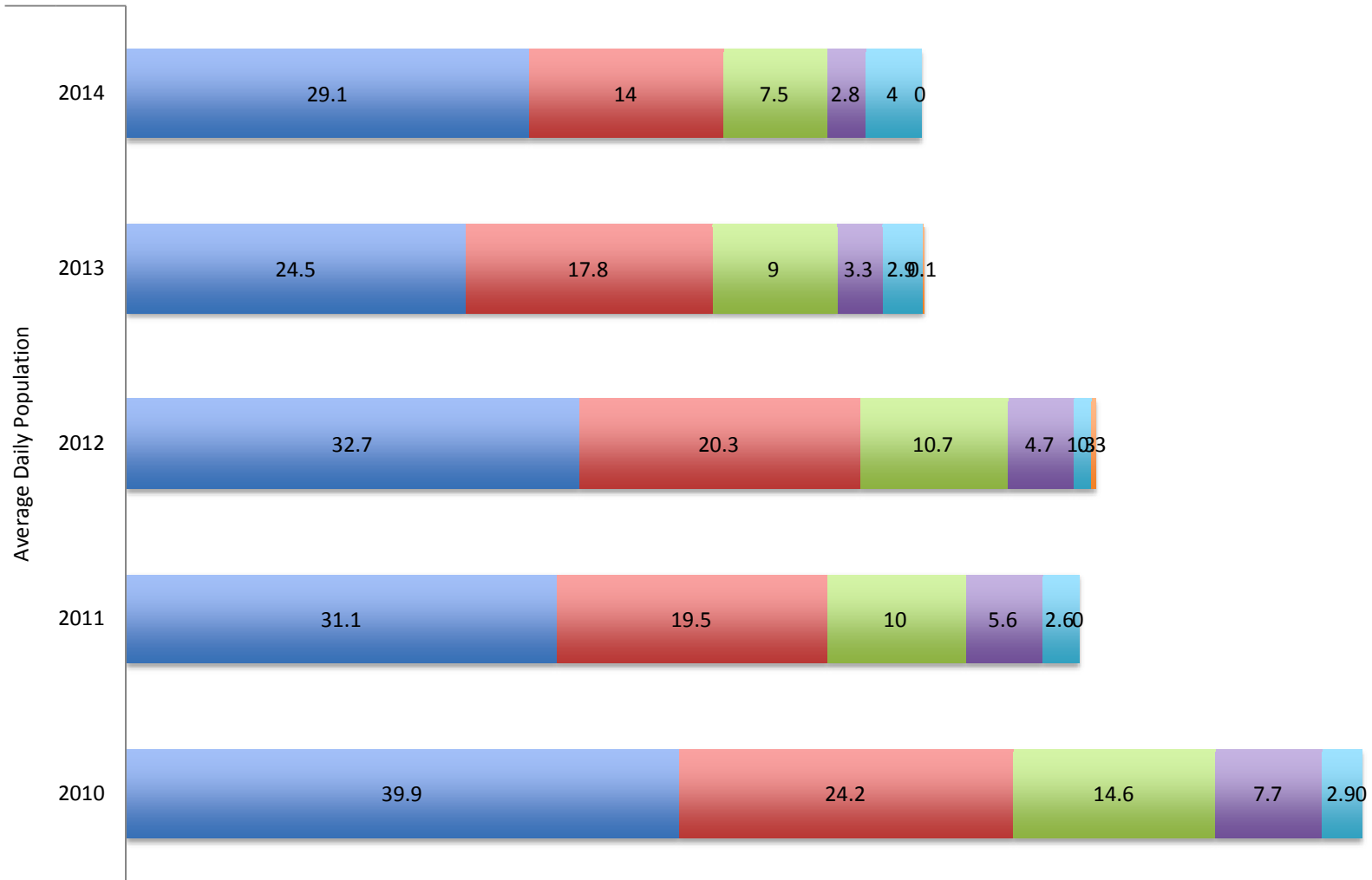


# An Example of How a Big Shift Idea Can Reduce Racial and Ethnic Disparities

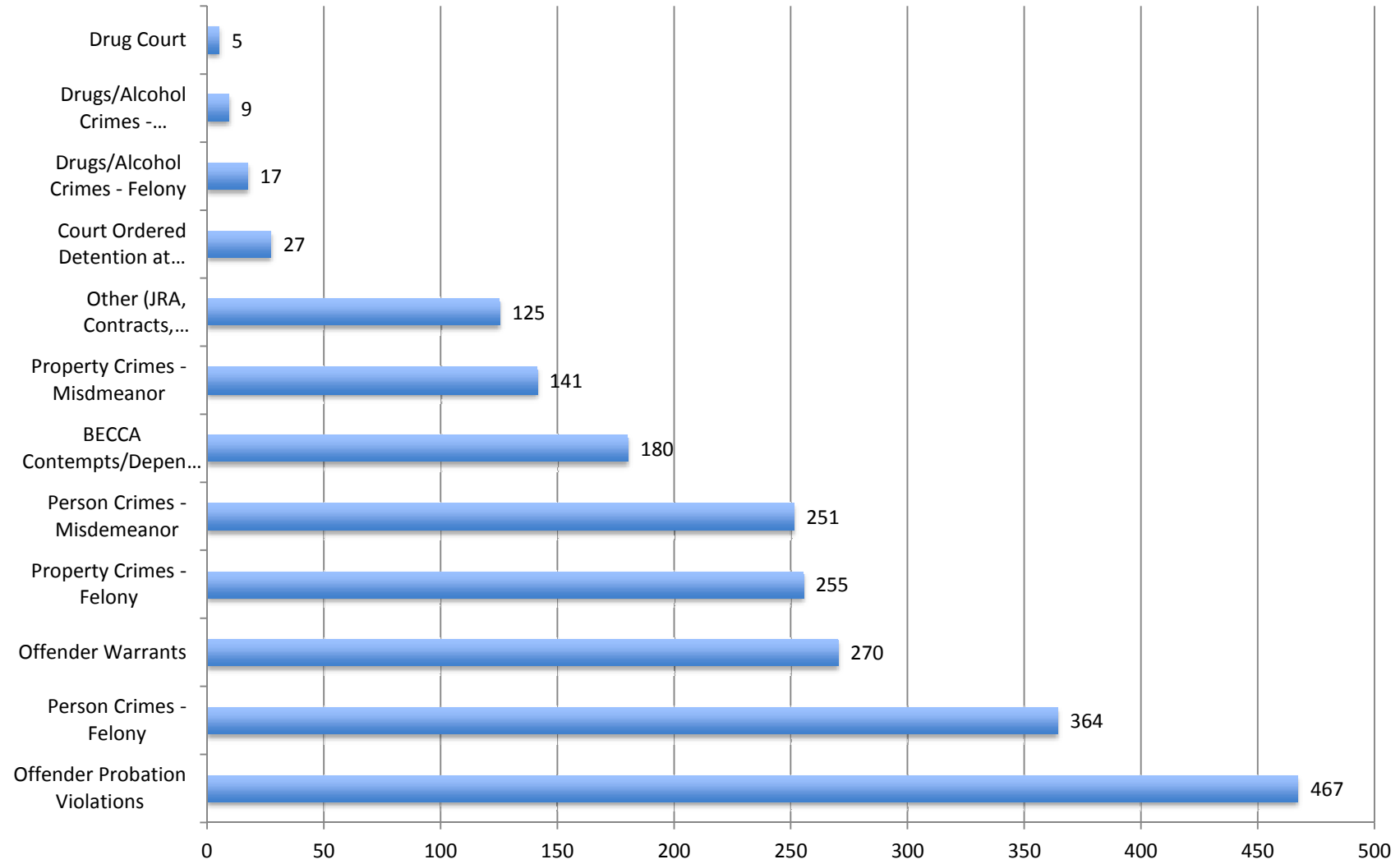
(TeamChild 3.13.15)

# Average Daily Population in Detention 2010-2014

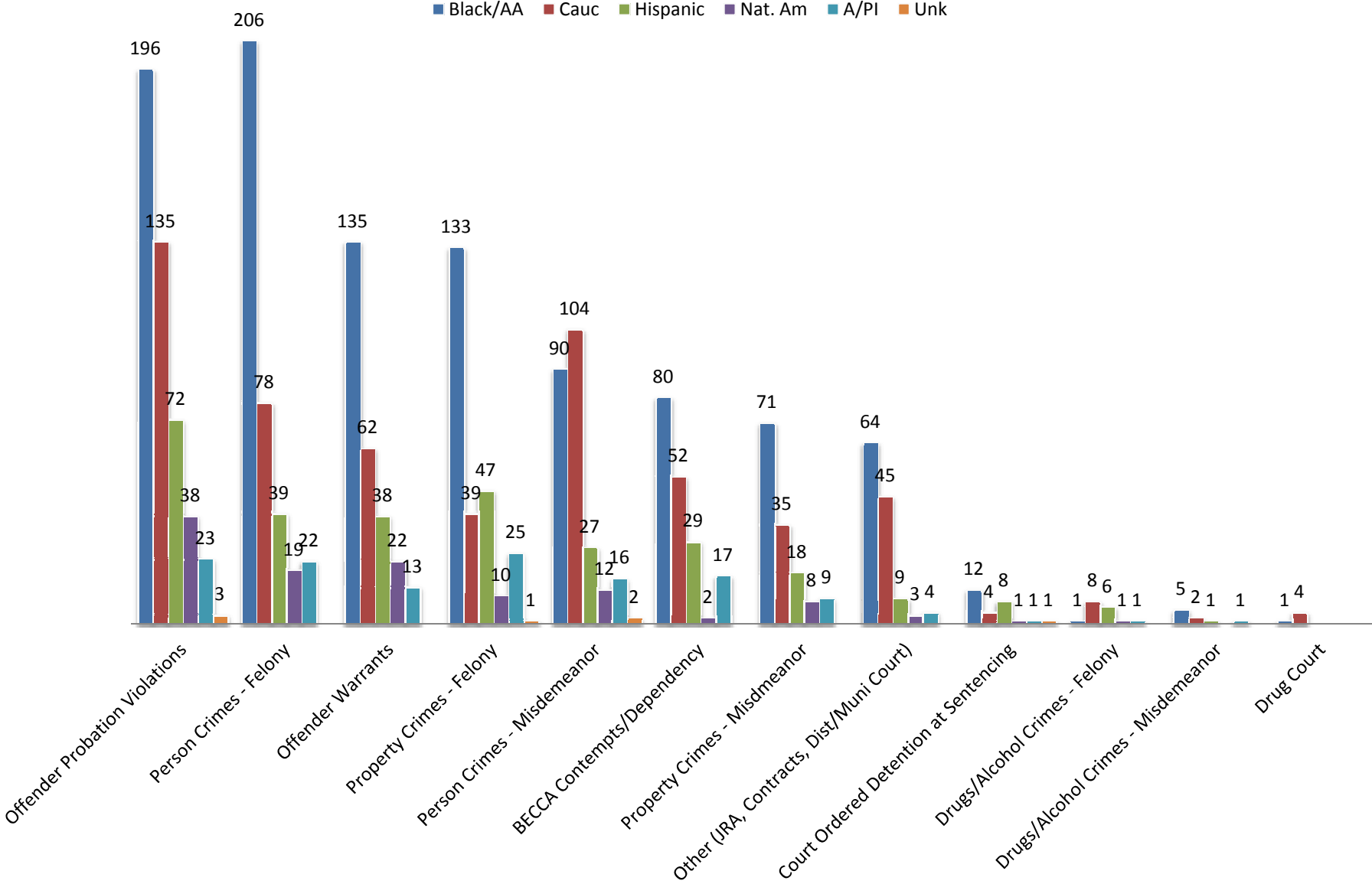
■ African American ■ Caucasian ■ Hispanic ■ Asian Pacific Islander ■ Native American ■ Other/Unknown



## 2014 Detention Admissions



# King County Detention Admissions by Race - 2014



# BIG SHIFT CONCEPT: STOP USING DETENTION IN RESPONSE TO PROBATION VIOLATIONS

Alternative strategies for probation related admissions will reduce #s and will impact a decision point with high racial disparity

- Probation violators make up 22% of the detention admissions in 2014.
- African American youth make up 42% (n=196) of the 2014 admissions related to probation violations.
- Youth of color make up 71% of the 2014 admissions related to probation violations.

# What is a probation violation?

- Post adjudication and disposition
- Violations result in a youth not following the court's order
- Common violations include school related problems, missing appointments, dirty UA's, not following through with probation officer's expectations

## **What is the system's current response/strategy?**

- Probation sanction grid that is progressively punitive
- Up to 30 days in detention for every violation of probation
- Unclear how effective sanction grid is in improving behavior or addressing underlying issues

## **What could we do differently?**

- Adopt research based youth development framework to address and improve behaviors (e.g. Maryland's approach to probation)
- Establish more direct connections to support that would address concerning behavior (e.g. Youth Advocate Programs)
- Proactively connect youth to existing programs and resources (not just a referral) (e.g. Pierce and Clark County models)