

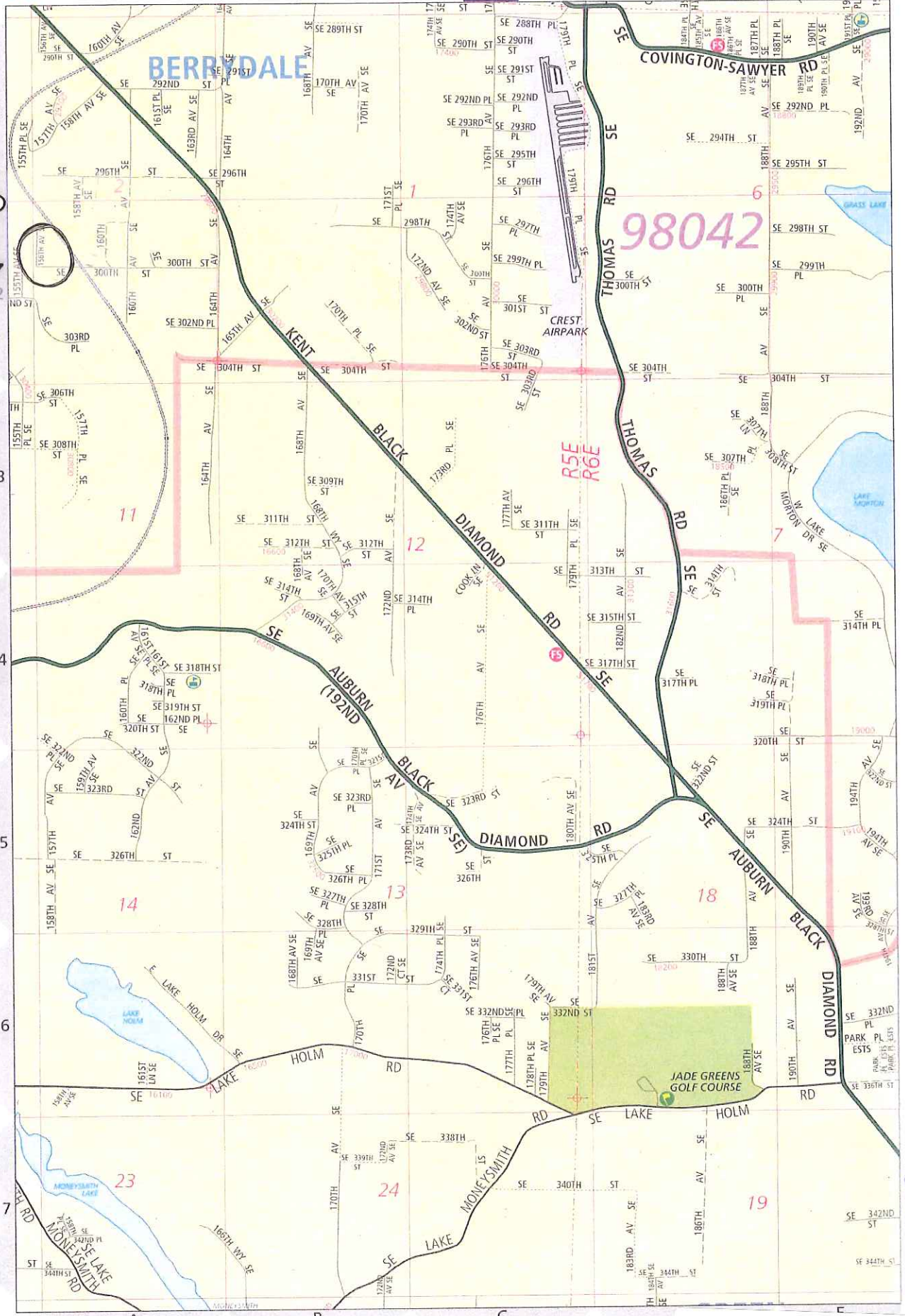
KING CO.

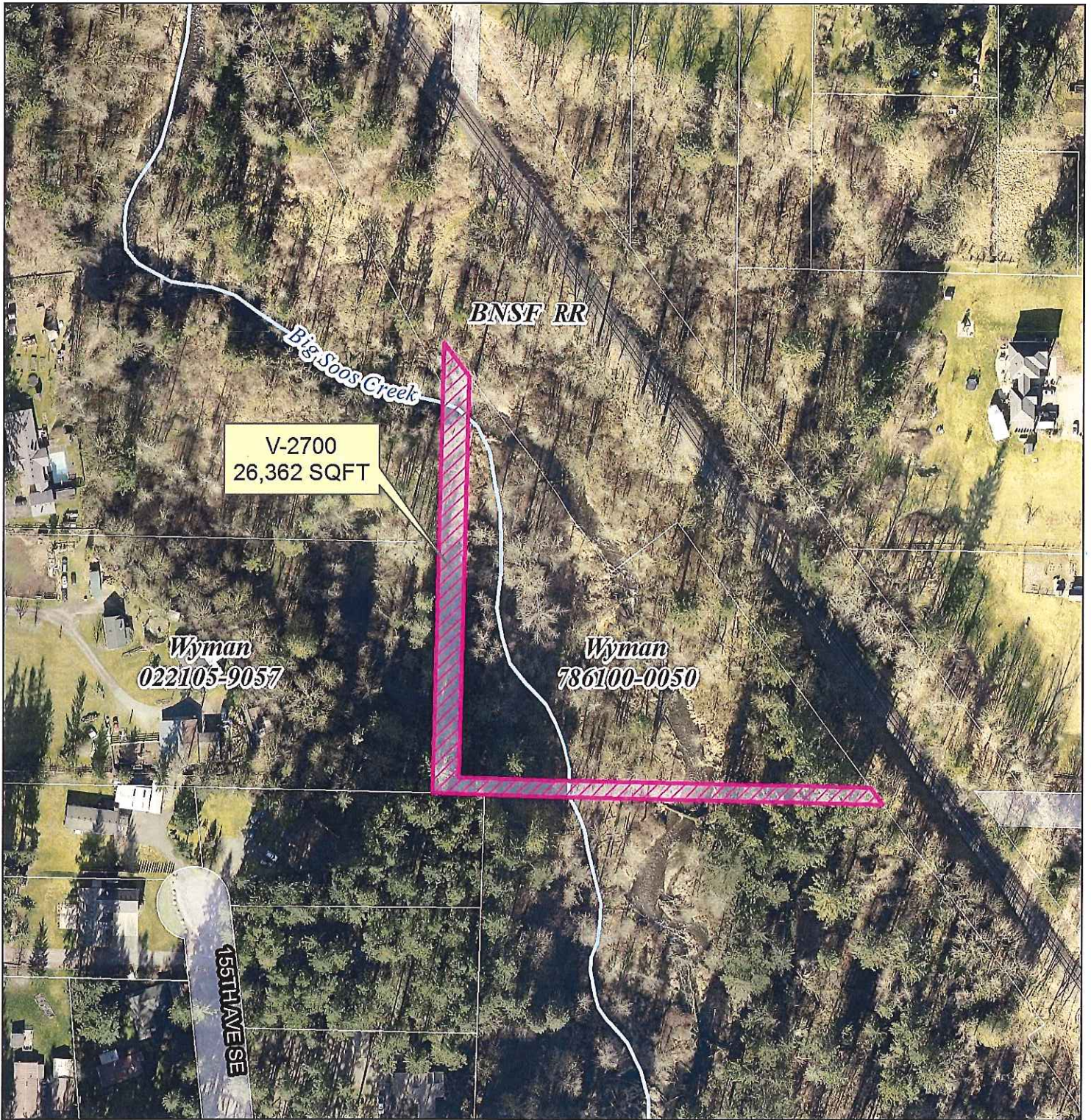
V-2700

98042

MAP 746
SEE

RAND McNALLY






PROPOSED RIGHT-OF-WAY VACATION

For Informational Use Only
2015 - Aerial Map

**156th Avenue SE,
SE 300th Street**
29920 154th Ave SE
Vacation File V-2700
SW & SE 2-21-5

 Vacation Area

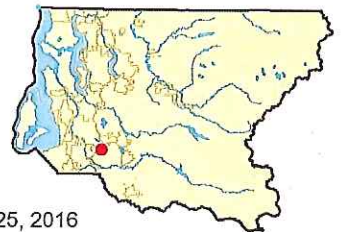
 KC Maintained ROW

RoadServices\Bounds&Vacs\Vacations\Current Road Vacations\V-2700 Wyman

The information included on this map has been compiled by King County staff from a variety of sources and is subject to change without notice.
King County makes no representations or warranties, express or implied, as to accuracy, completeness, timeliness, or rights to the use of such information.
This document is not intended for use as a survey product. King County shall not be liable for any general, special, indirect, incidental, or consequential damages including, but not limited to, lost revenues or lost profits resulting from the use or misuse of the information contained on this map.
Any sale of this map or information on this map is prohibited except by written permission of King County.



King County Overview Map



July 25, 2016

75 37.5 0 75 150 225 Feet