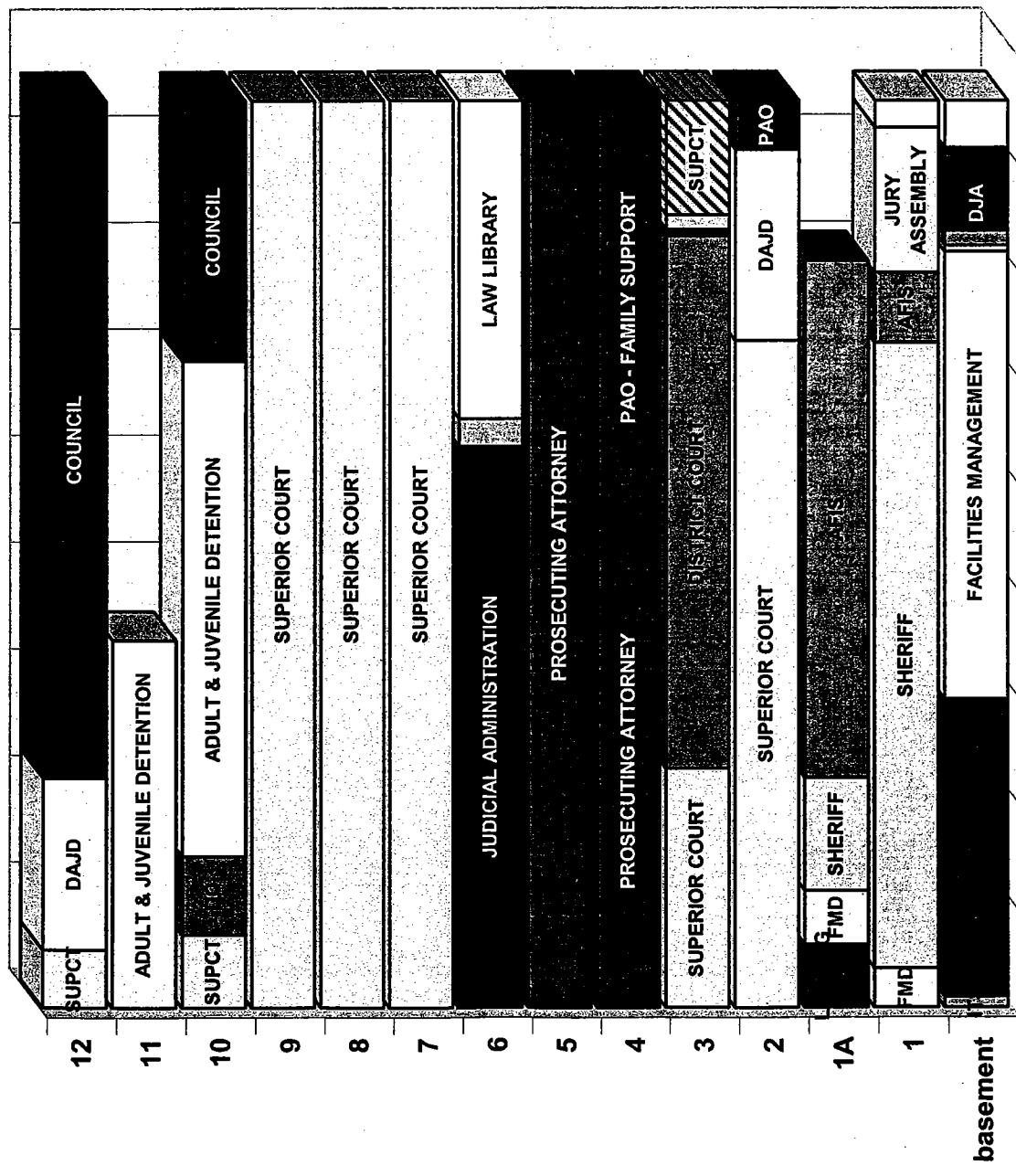


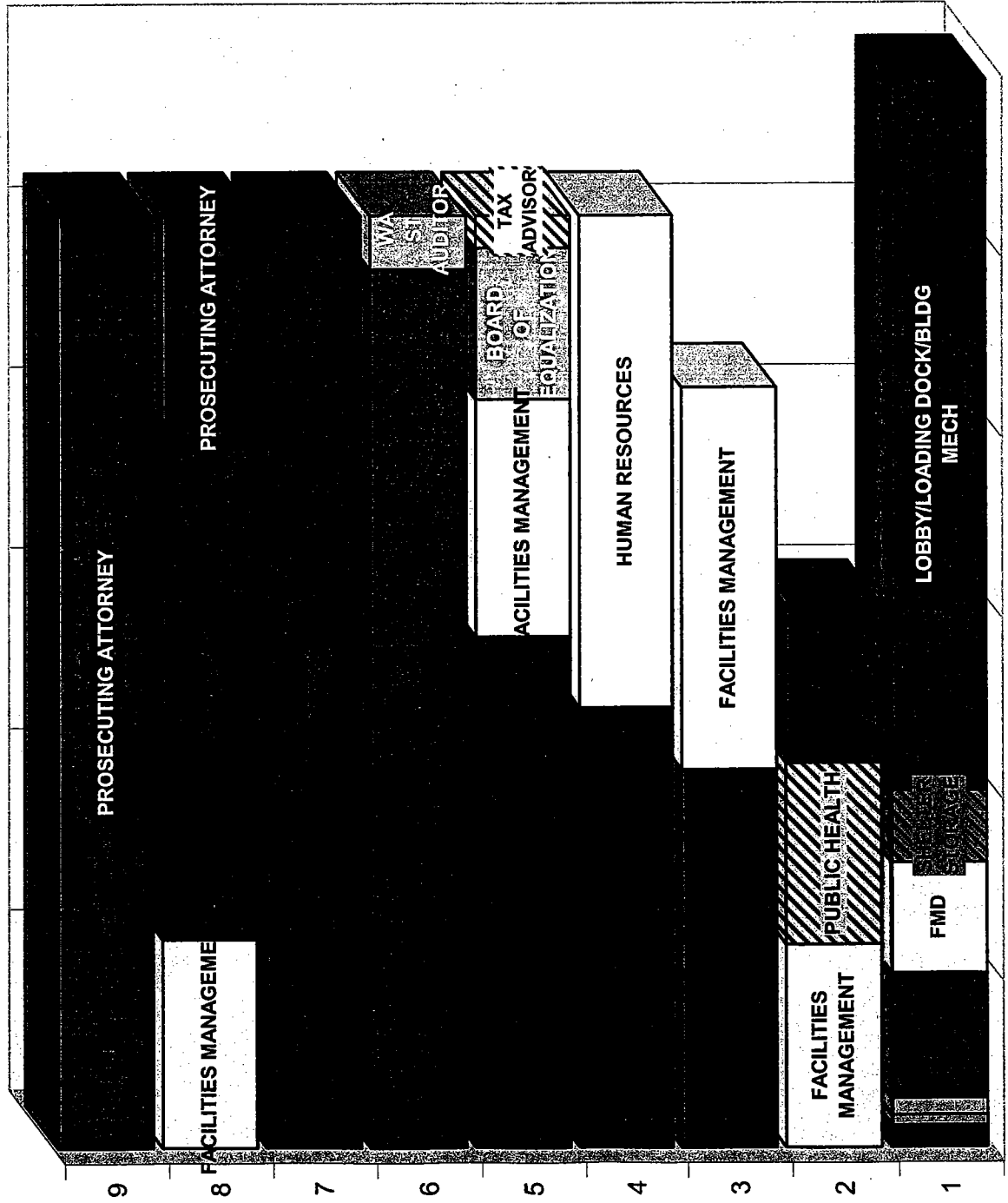
Courthouse - Space Programming
 588,000 gross square feet
 DRAFT 4-05



- ITS
- LOBBY & MECHANICAL
- LOADING DOCK
- FACILITIES MANAGEMENT (FMD)
- SUPERIOR COURT (SUPCT)
- DISTRICT COURT (DC)
- JUDICIAL ADMINISTRATION (DJA)
- SHERIFF (SO)
- ADULT & JUVENILE DETENTION (DAJD)
- PROSECUTING ATTORNEY (PAO)
- PAO - FAMILY SUPPORT
- COUNCIL
- PRESS ROOM
- TITLE COMPANIES
- AFIS
- LEASE

Space that is shown with a cross hatch is currently occupied by the named agency but may be re-programmed.

Administration Building - Space Programming
 220,000 gross square feet
 DRAFT 4-05



■ RECORDS, ELECTIONS, & LICENSING (REALS)

▣ EXEC

■ ITS

■ FINANCE

□ FACILITIES MANAGEMENT (FMD)

▣ SHELTER/STORAGE

■ LOBBY/LOADING DOCK/BLDG MECH

□ PUBLIC HEALTH

■ CONFERENCE

□ HUMAN RESOURCES

▣ WA ST AUDITOR

▣ BOARD OF EQUALIZATION

Space that is shown with a cross hatch is currently occupied by the named agency but may be re-



□ TAX ADVISOR

2,748 Building Common Space

Mech.

18,257 Useable Office SF
59 WORKSTATIONS
16 OFFICES

13th Floor

18,322 UOSF (3,200 space pocket)
36 WORKSTATIONS
11 OFFICES

12th Floor

19,107 Useable Office SF
120 WORKSTATIONS
11 OFFICES

11th Floor

19,151 Useable Office SF
120 WORKSTATIONS
11 OFFICES

10th Floor

19,151 Useable Office SF
120 WORKSTATIONS
11 OFFICES

9th Floor

19,195 Useable Office SF
120 WORKSTATIONS
11 OFFICES

8th Floor

18,423 UOSF (9,500 space pocket)
120 WORKSTATIONS
11 OFFICES

7th Floor

19,231 UOSF
120 WORKSTATIONS
11 OFFICES

6th Floor

18,482 UOSF (6,000 space pocket)
120 WORKSTATIONS
11 OFFICES

5th Floor

19,273 UOSF
120 WORKSTATIONS
11 OFFICES

4th Floor

18,465 UOSF (2,500 space pocket)
120 WORKSTATIONS
11 OFFICES

3rd Floor

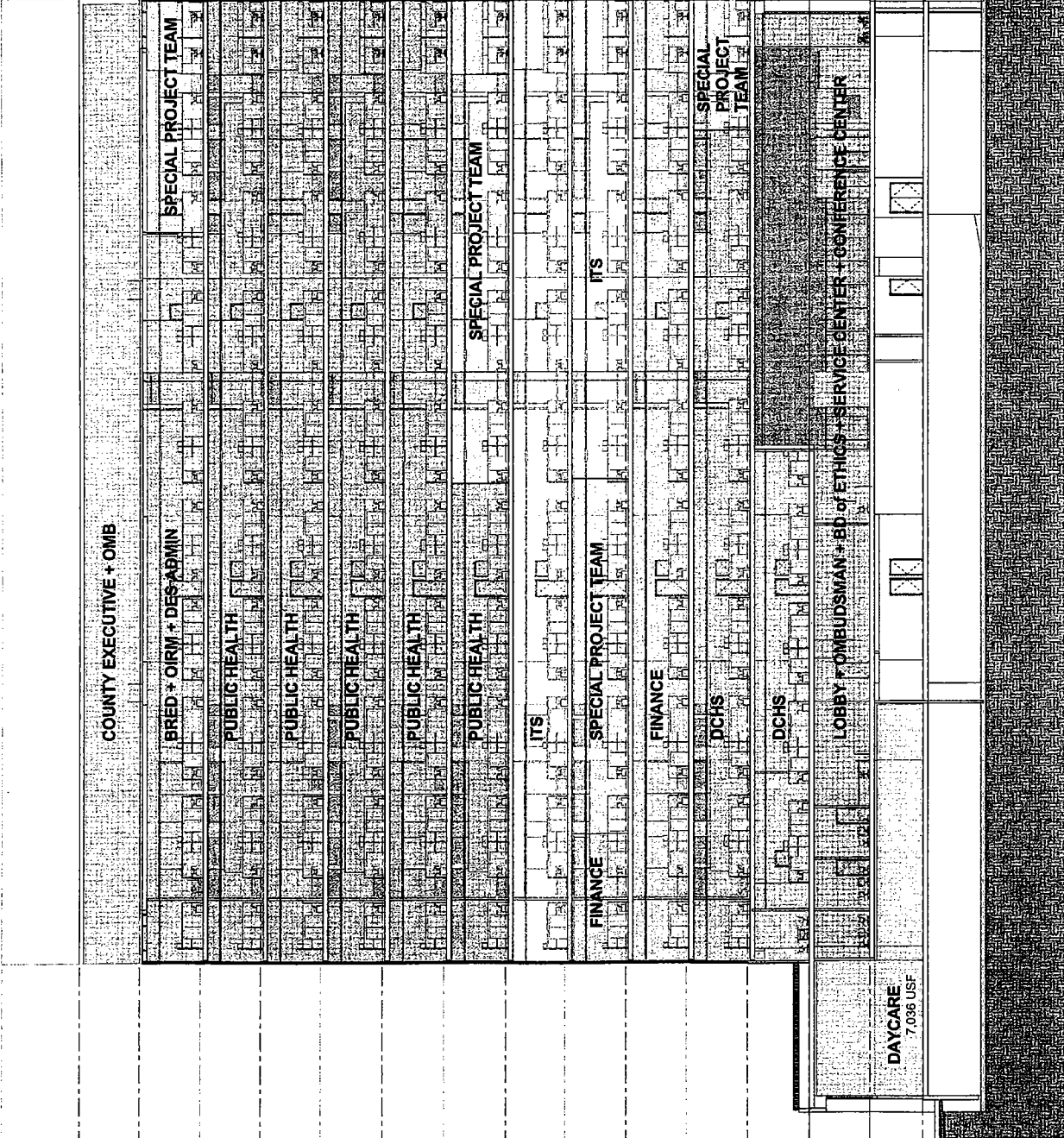
15,579 UOSF
73 WORKSTATIONS
9 OFFICES

2nd Floor

- CONFERENCE CENTER 5,153 SF
- HELP DESK and
OMBUDSMEN / OFFICE 7,339 SF

1st Floor

DAYCARE
7,036 USF



King County
NOB

Enter address here

Drawing No.
 BUILDING SECTION
 STACKING
 DIAGRAM

Date: 5-27-05
 Job No: 1305-99
 Drawn By: DJ
 Checked By: RC
 Drawing No:

SECTION