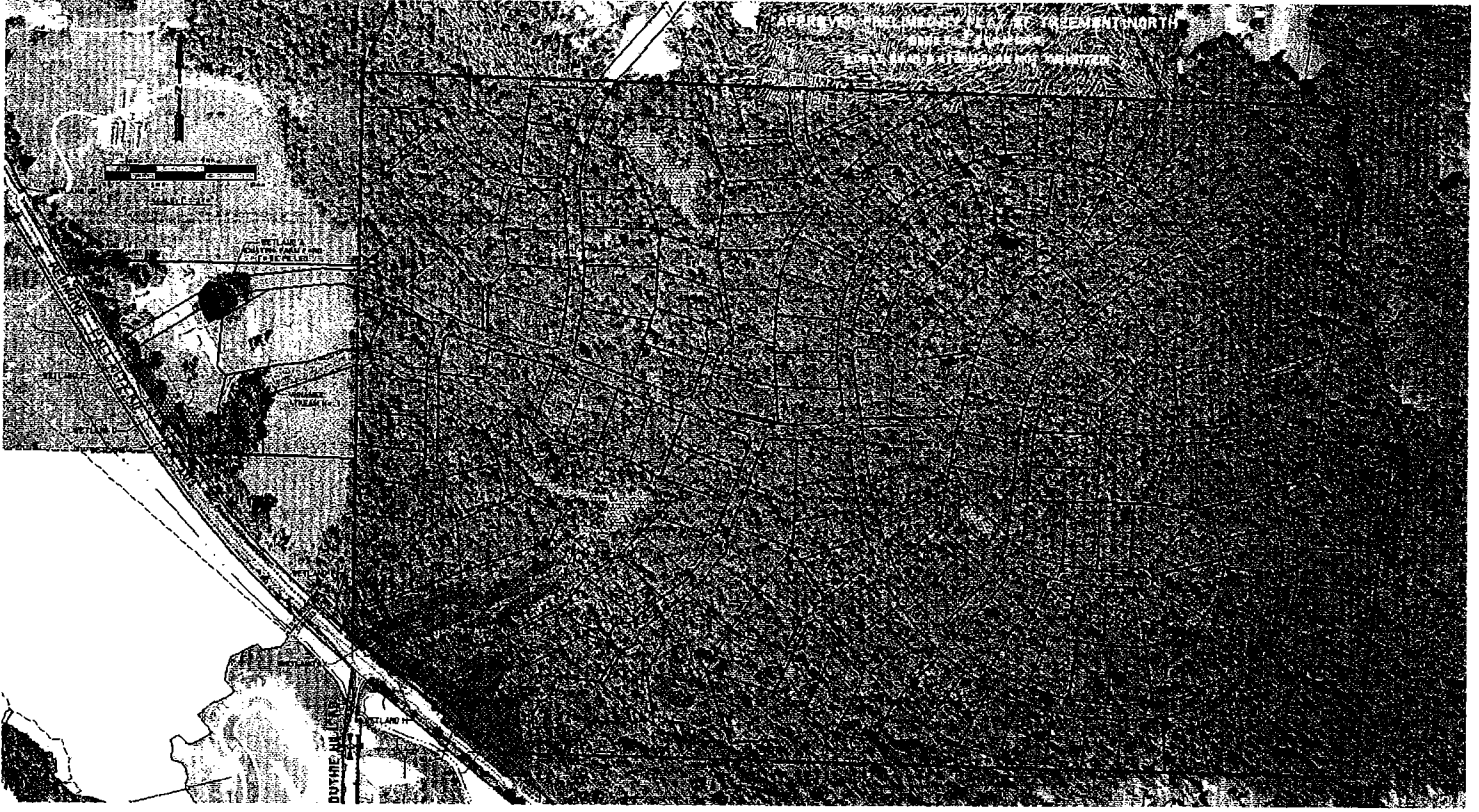


PORTIONS OF SECTION 5 - 6 TOWNSHIP 24N RANGE 7E W.M.

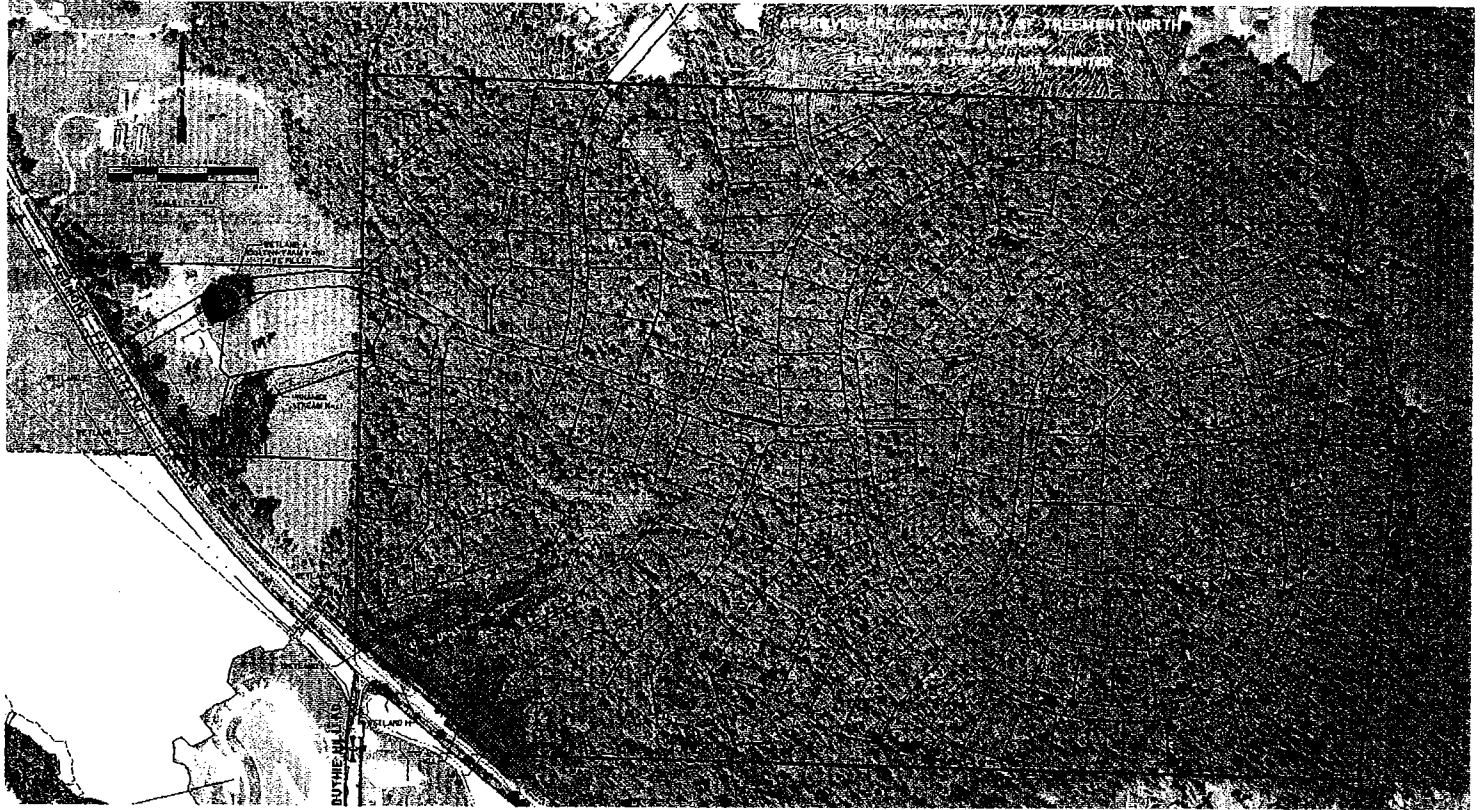


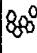
Hugh C. Goldsmith & Associates, Inc.  
Consulting Engineers • Surveyors • Planners

TREEMONT • KING COUNTY, WASHINGTON  
**ORTHO PHOTO WITH LOTS**  
PORT BLAKELY COMMUNITIES, INC. • ISSAQUAH, WASHINGTON



PORTIONS OF SECTION 5 - 6 TOWNSHIP 24N RANGE 7E W.M.

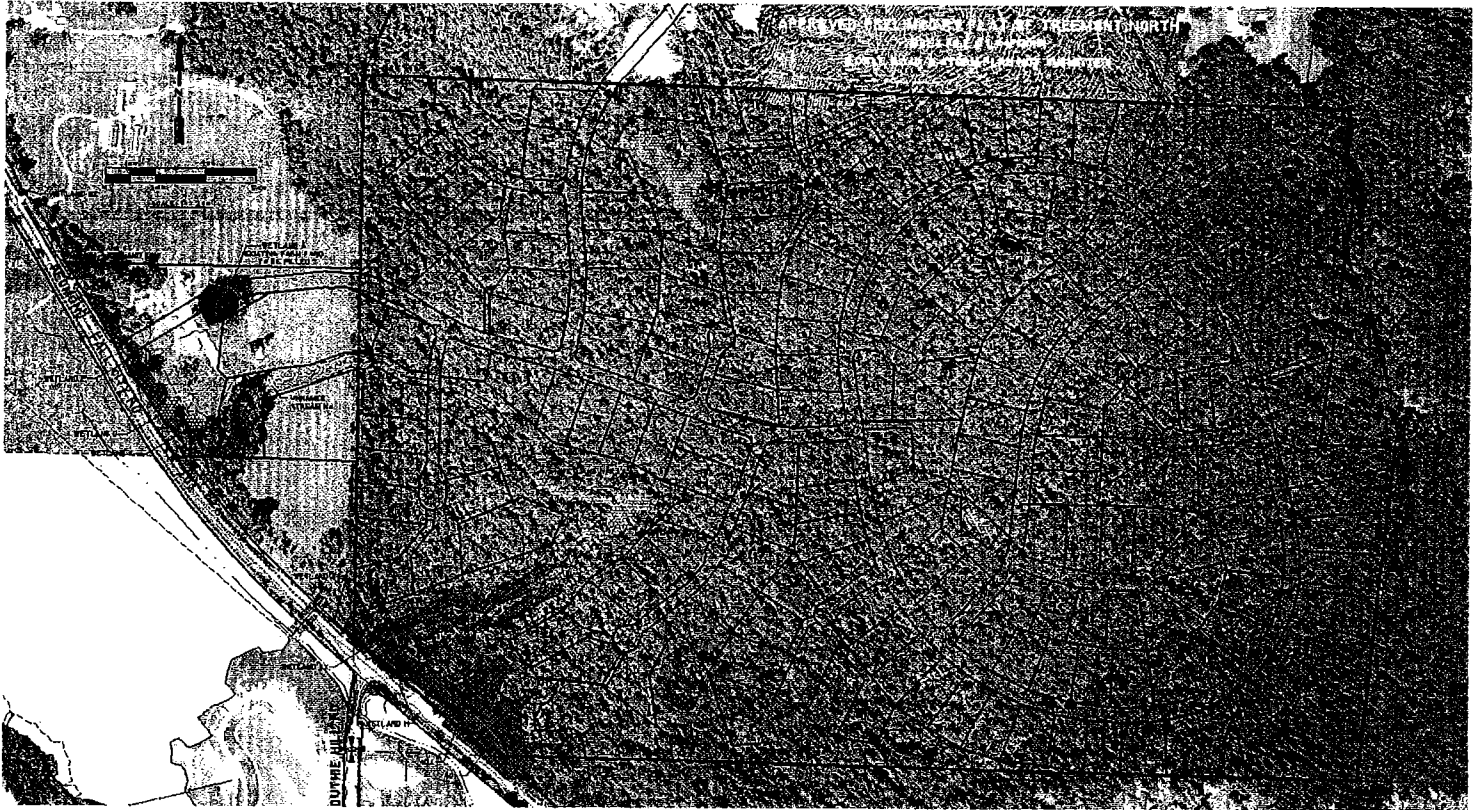


 Hugh G. Celdermith & Associates, Inc.  
Consulting Engineers - Surveyors - Planners  
1011 10th Street, Suite 1000, Issaquah, WA 98029  
206.875.1111

TREEMONT • KING COUNTY, WASHINGTON  
**ORTHO PHOTO WITH LOTS**  
PORT BLAKELY COMMUNITIES, INC. • ISSAQUAH, WASHINGTON



PORTIONS OF SECTION 5 - 6 TOWNSHIP 24N RANGE 7E W.M.

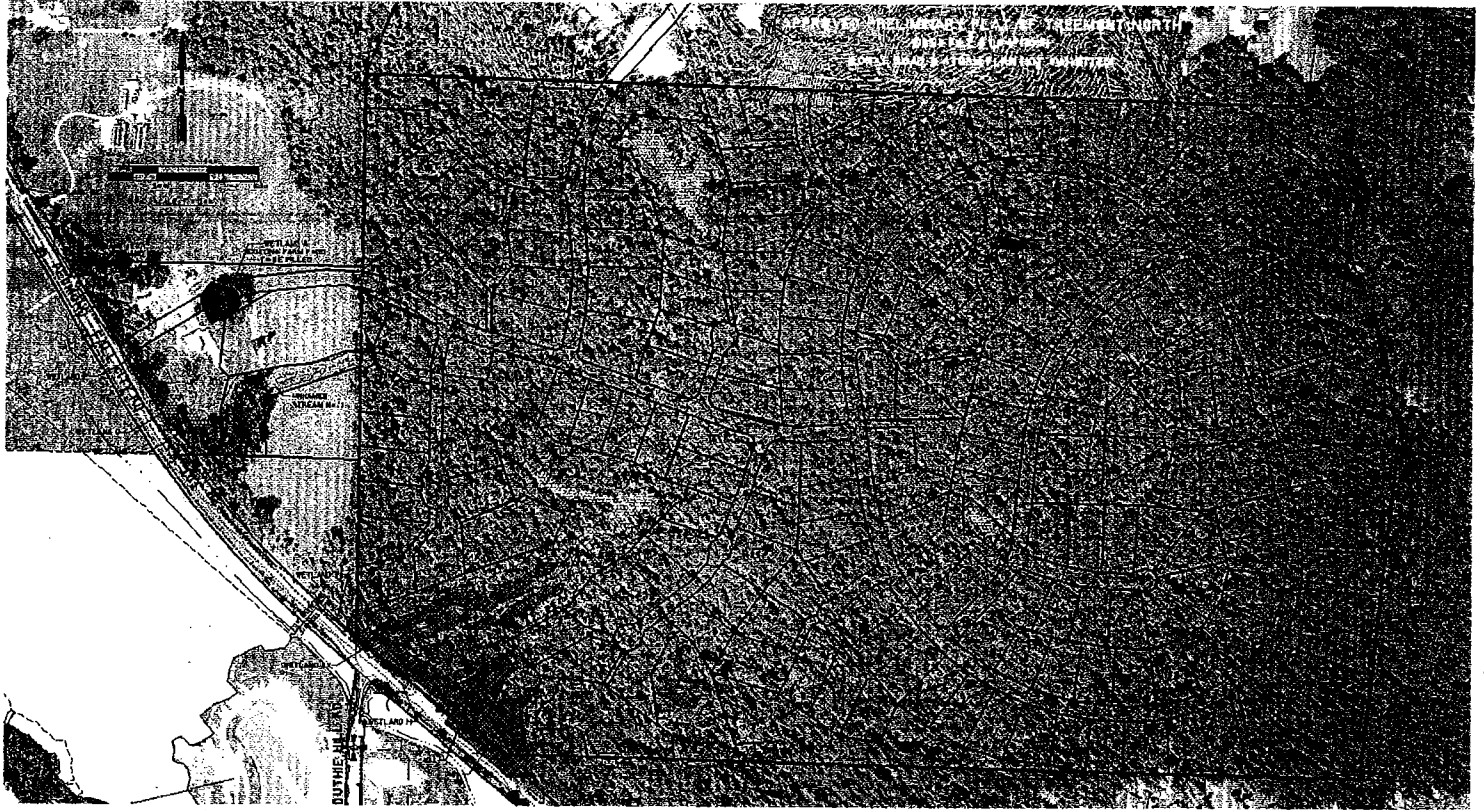


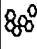
Hugh C. Goldsmith & Associates, Inc.  
Consulting Engineers - Surveyors - Planners

TREEMONT • KING COUNTY, WASHINGTON  
**ORTHO PHOTO WITH LOTS**  
PORT BLAKELY COMMUNITIES, INC. • ISSAQUAH, WASHINGTON



PORTIONS OF SECTION 5 - 6 TOWNSHIP 24N RANGE 7E W.M.

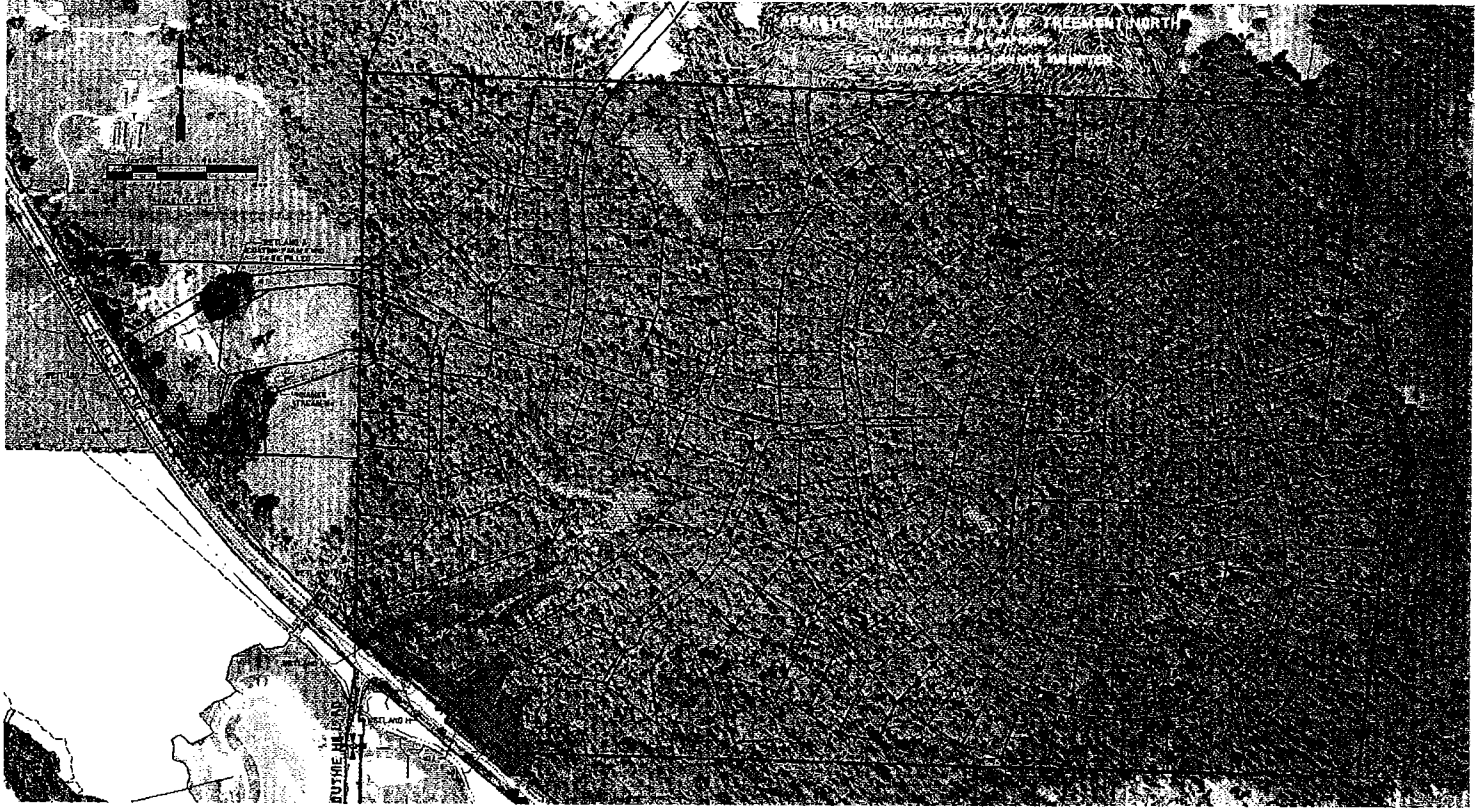


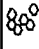
 Hugh G. Collemith & Associates, Inc.  
Consulting Engineers - Surveyors - Planners  
10000 1st Avenue, Seattle, WA 98148

TREEMONT • KING COUNTY, WASHINGTON  
**ORTHO PHOTO WITH LOTS**  
PORT BLAKELY COMMUNITIES, INC. • ISSAQUAH, WASHINGTON



PORTIONS OF SECTION 5 - 6 TOWNSHIP 24N RANGE 7E W.M.

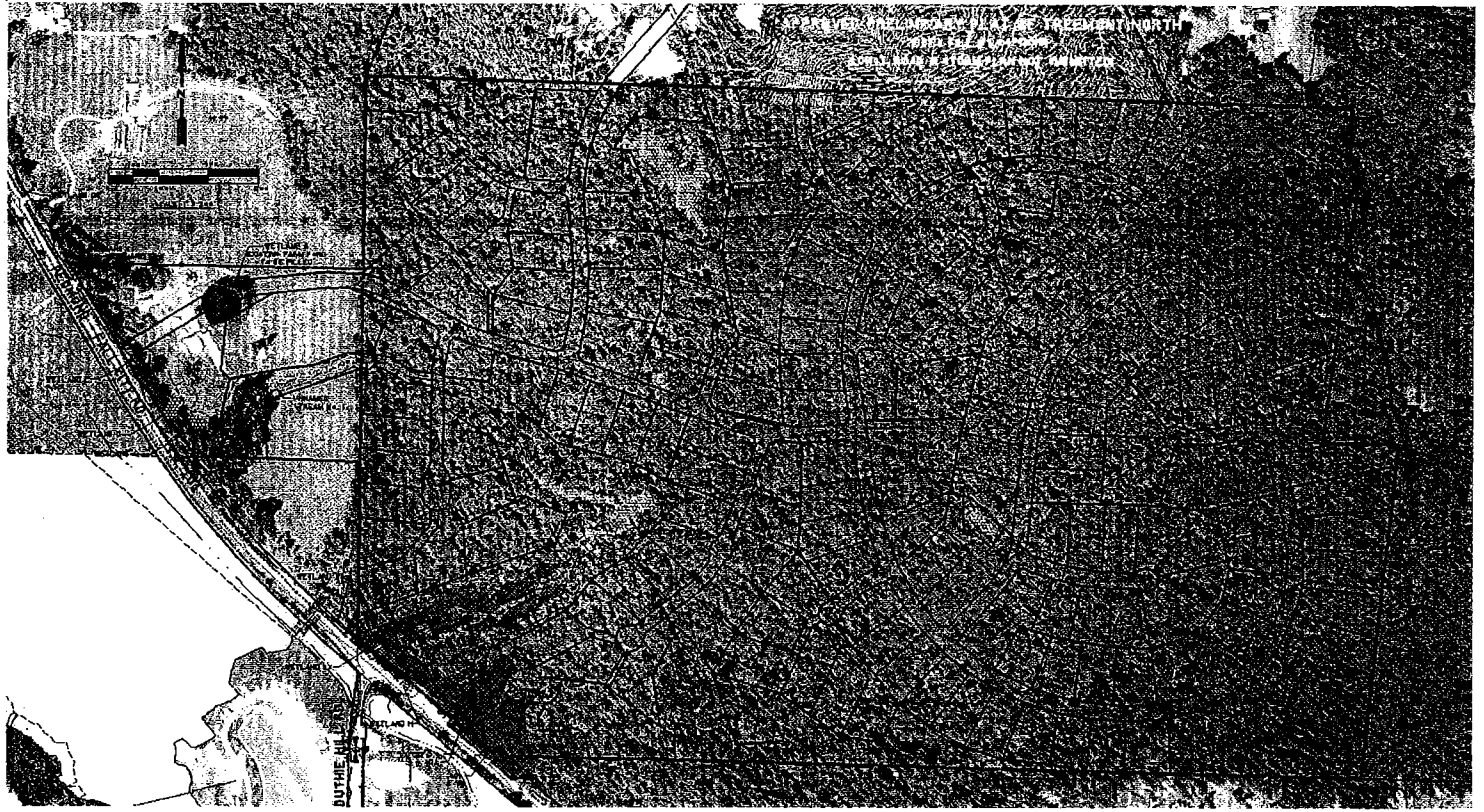


 Hugh C. Goldsmith & Associates, Inc.  
Consulting Engineers - Surveyors - Planners  
1000 1st Avenue, Suite 1000, Seattle, WA 98101  
206.461.1111

TREEMONT • KING COUNTY, WASHINGTON  
**ORTHO PHOTO WITH LOTS**  
PORT BLAKELY COMMUNITIES, INC. • ISSAQUAH, WASHINGTON



PORTIONS OF SECTION 5 - 6 TOWNSHIP 24N RANGE 7E W.M.

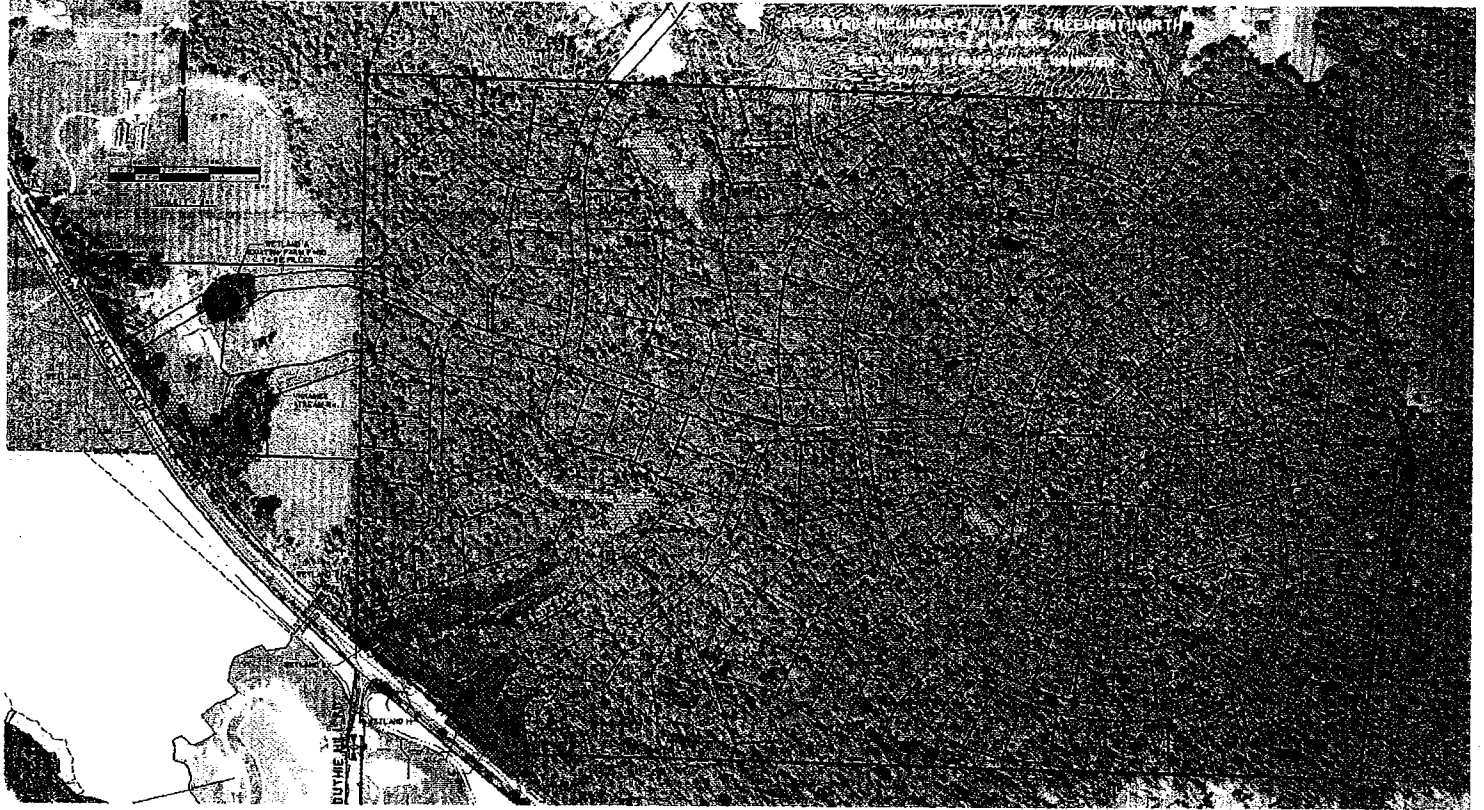


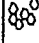
Hugh C. Goldsmith & Associates, Inc.  
Consulting Engineers - Surveyors - Planners

TREMONT • KING COUNTY, WASHINGTON  
**ORTHO PHOTO WITH LOTS**  
PORT BLAKELY COMMUNITIES, INC. • ISSAQUAH, WASHINGTON



PORTIONS OF SECTION 5 - 6 TOWNSHIP 24N RANGE 7E W.M.

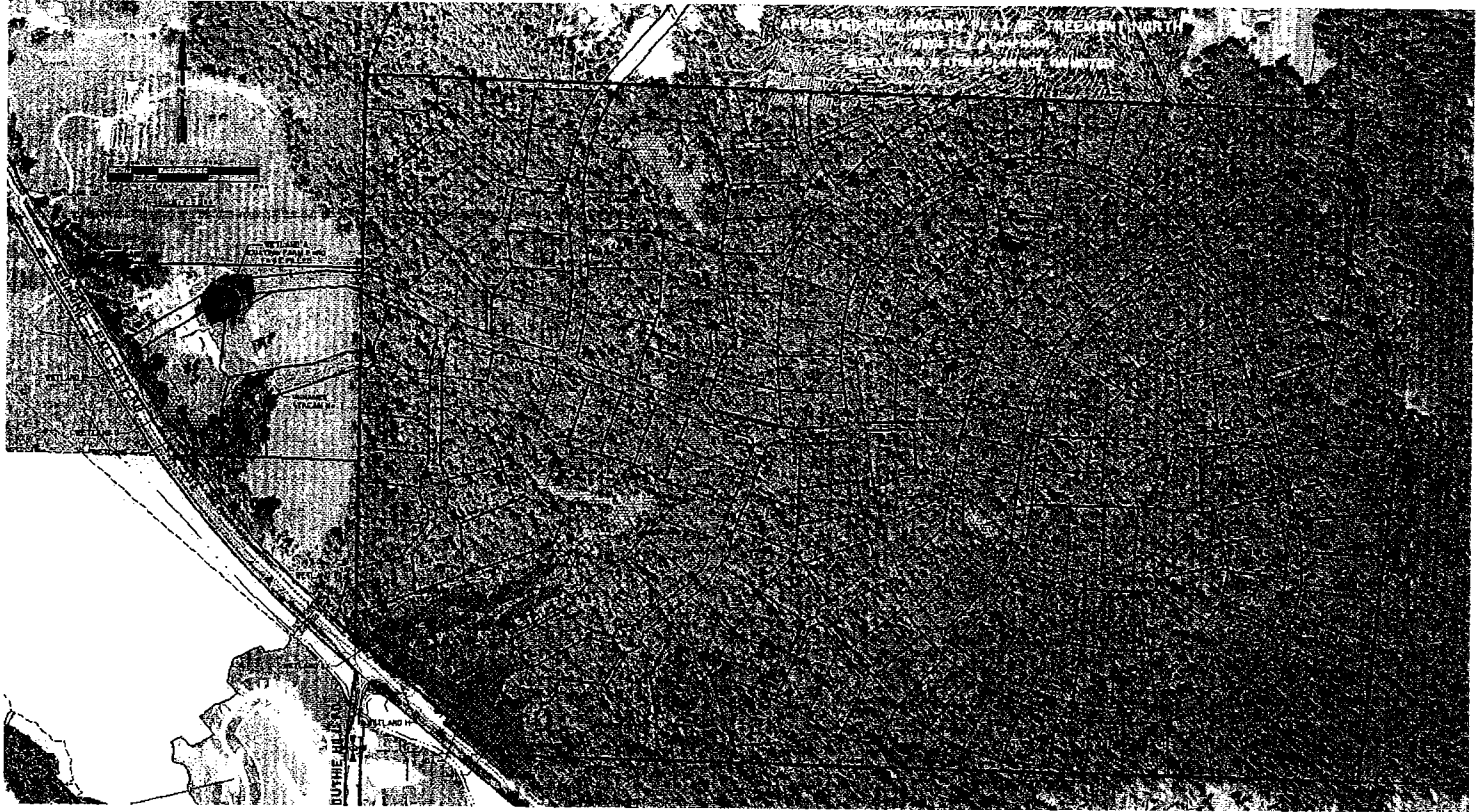


 Hugh C. Colman & Associates, Inc.  
Consulting Engineers - Surveyors - Planners  
10000 1st Avenue, NE, Issaquah, WA 98029  
Phone: (206) 881-1111 Fax: (206) 881-1112

TREEMONT • KING COUNTY, WASHINGTON  
**ORTHO PHOTO WITH LOTS**  
PORT BLAKELY COMMUNITIES, INC. • ISSAQUAH, WASHINGTON



PORTIONS OF SECTION 5 - 6 TOWNSHIP 24N RANGE 7E W.M.



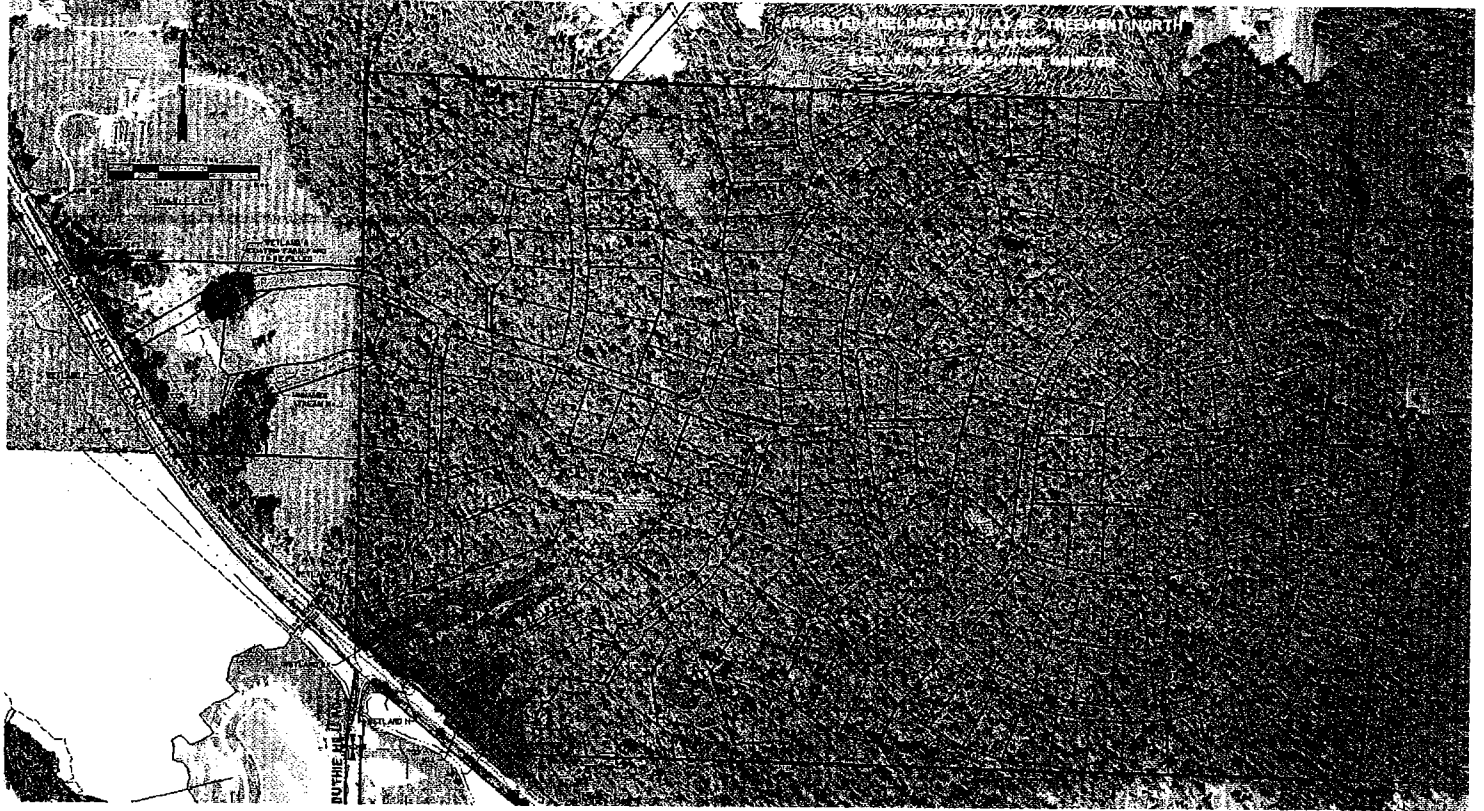
Hugh C. Cohnsmith & Associates, Inc.  
Consulting Engineers - Surveyors - Planners

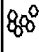
TREEMONT • KING COUNTY, WASHINGTON.  
**ORTHO PHOTO WITH LOTS**  
PORT BLAKELY COMMUNITIES, INC. • ISSAQUAH, WASHINGTON





PORTIONS OF SECTION 5 - 6 TOWNSHIP 24N RANGE 7E W.M.

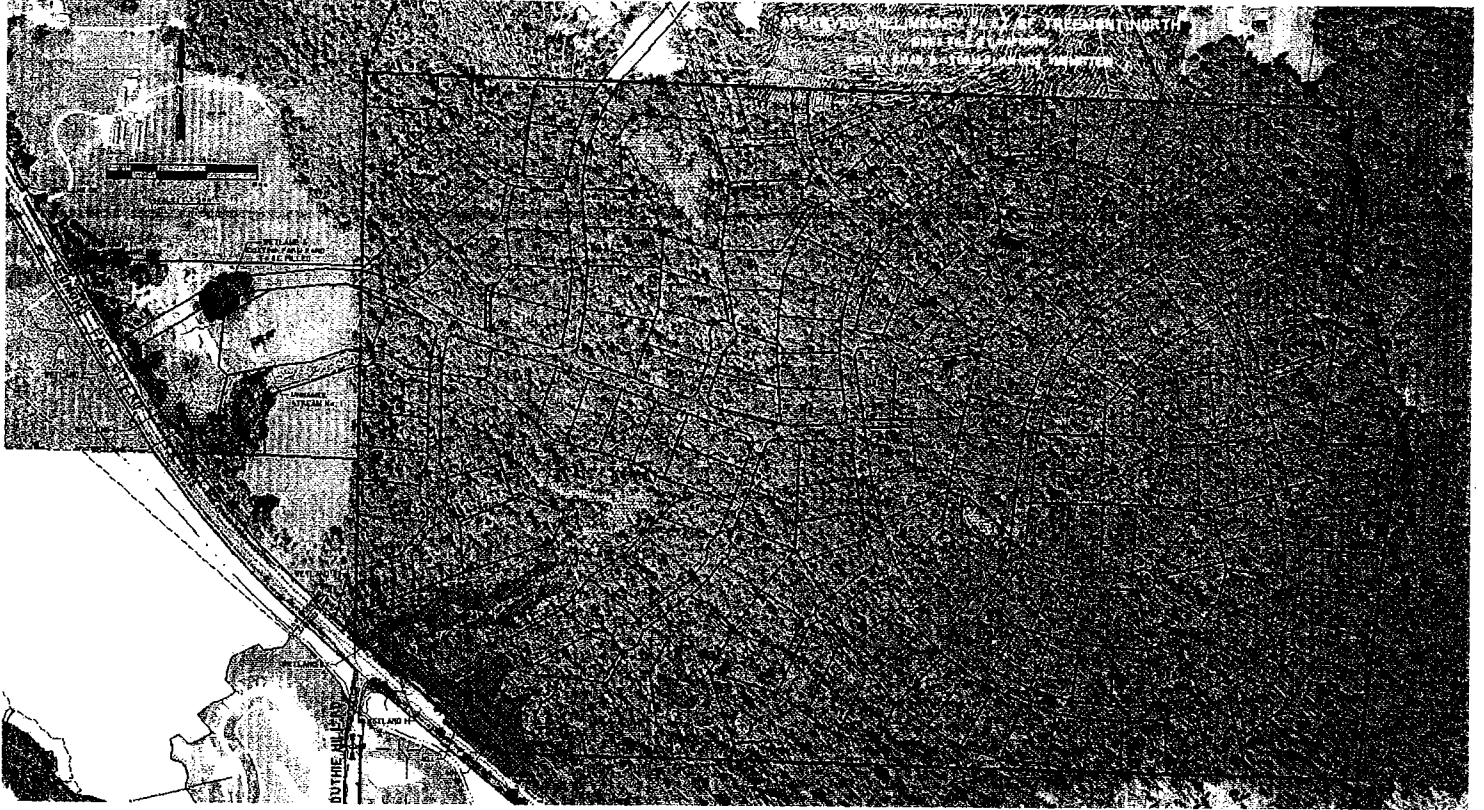


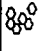
 Hugh C. Colquhoun & Associates, Inc.  
Consulting Engineers • Surveyors • Planners  
1111 1st Avenue, Seattle, WA 98101

TREEMONT • KING COUNTY, WASHINGTON  
**ORTHO PHOTO WITH LOTS**  
PORT BLAKELY COMMUNITIES, INC. • ISSAQUAH, WASHINGTON



PORTIONS OF SECTION 5 - 6 TOWNSHIP 24N RANGE 7E W.M.



 Hugh C. Goldsmith & Associates, Inc.  
Consulting Engineers - Surveyors - Planners  
1000 1st Avenue, Suite 1000, Seattle, WA 98101  
206.461.1234

TREEMONT • KING COUNTY, WASHINGTON  
**ORTHO PHOTO WITH LOTS**  
PORT BLAKELY COMMUNITIES, INC. • ISSAQUAH, WASHINGTON

\*