



Signature Report

February 24, 2004

Ordinance 14837

Proposed No. 2004-0067.1

Sponsors Irons

1 AN ORDINANCE approving the revision of the corporate
2 boundary of the city of Covington to include segments of
3 180th Avenue SE and SE 240th Street that are county roads,
4 as provided for in RCW 35A.21.210
5
6

7 **STATEMENT OF FACTS:**

8 1. The city of Covington passed Ordinance Number 78-03 on November
9 12, 2003. It was received by King County road services division on
10 November 17, 2003.

11 2. RCW 35A.21.210 authorizes the governing body of any code city to
12 revise any part of the corporate boundary that coincides with the
13 centerline, edge, or any portion of a public street, road or highway right-
14 of-way by substituting therefore a right-of-way line of the same public
15 street, road or highway so as fully to include or fully to exclude that
16 segment of the public street, road or highway from the corporate limits of
17 the city.

18 3. Revision of the corporate boundary of a city is effective upon approval
19 by the city council and the county legislative authority as provided for in
20 RCW 35A.21.210.

21 BE IT ORDAINED BY THE COUNCIL OF KING COUNTY:

22 SECTION 1. The revision of the corporate boundary of the city of Covington to
23 include certain segments of 180th Avenue Southeast and certain segments of Southeast
24 240th Street, is hereby approved.

25

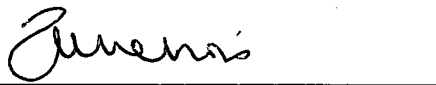
Ordinance 14837 was introduced on 2/2/2004 and passed by the Metropolitan King
County Council on 2/23/2004, by the following vote:

Yes: 13 - Mr. Phillips, Ms. Edmonds, Mr. von Reichbauer, Ms. Lambert, Mr.
Pelz, Mr. McKenna, Mr. Ferguson, Mr. Hammond, Mr. Gossett, Ms. Hague,
Mr. Irons, Ms. Patterson and Mr. Constantine
No: 0
Excused: 0

KING COUNTY COUNCIL
KING COUNTY, WASHINGTON

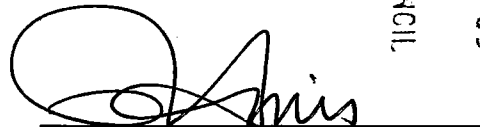

Larry Phillips, Chair

ATTEST:



Anne Noris, Clerk of the Council

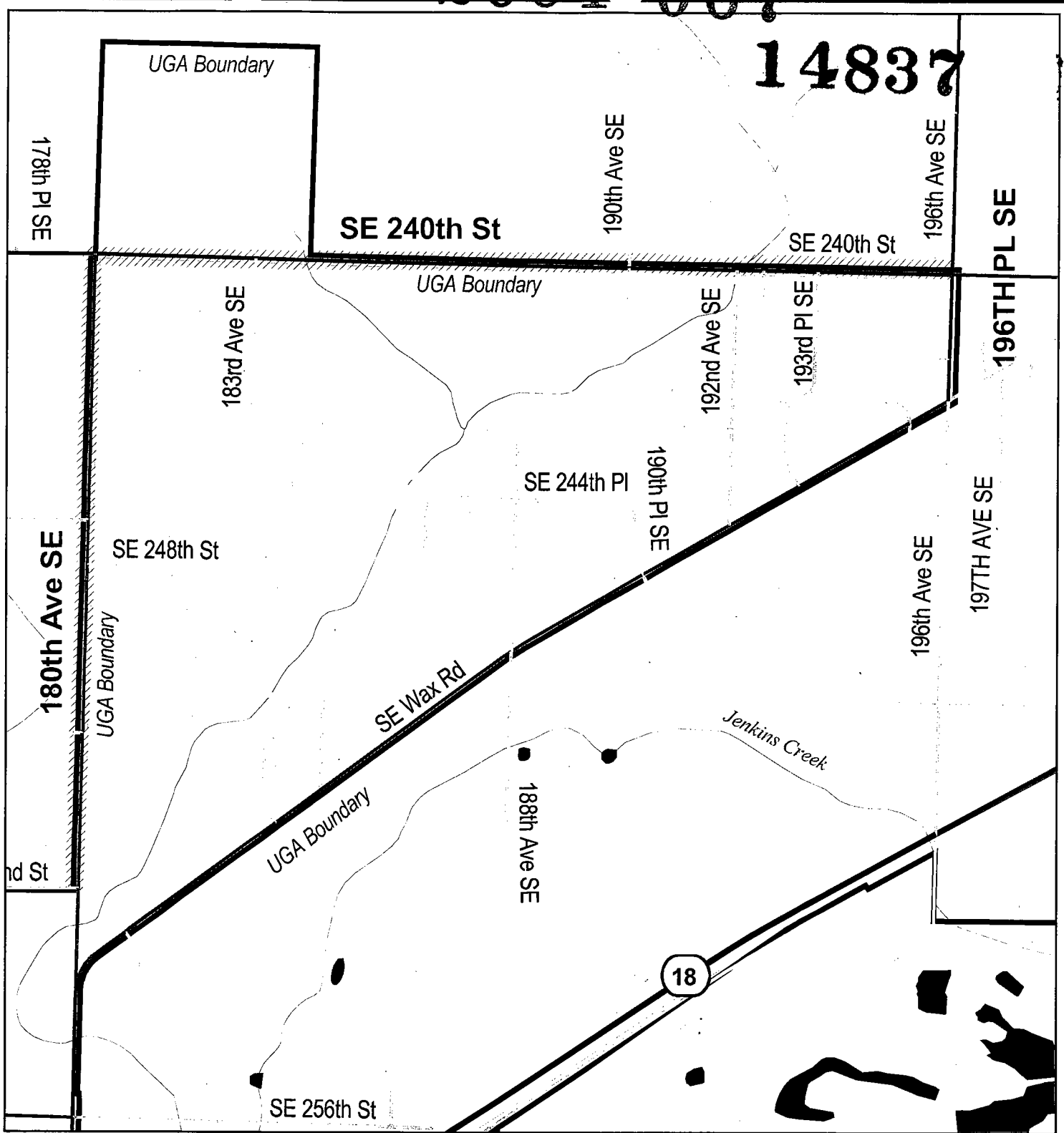
APPROVED this 4 day of March, 2004.


Ron Sims, County Executive

RECEIVED
2004 MAR -4 AM 9:59
CLERK
KING COUNTY COUNCIL


Attachments A. Vicinity Map

14837




Vicinity Map


SE 240th St and 180th Ave SE

 Proposed Roadway Annexation

The information included on this map has been compiled by King County staff from a variety of sources and is subject to change without notice. King County makes no representations or warranties, express or implied, as to accuracy, completeness, timeliness, or rights to the use of such information. King County shall not be liable for any general, special, indirect, incidental, or consequential damages including, but not limited to, lost revenues or lost profits resulting from the use or misuse of the information contained on this map. Any sale of this map or information on this map is prohibited except by written permission of King County.

N

 October 27, 2003

500 0 500 Feet


King County
File Name: SXY \jabbalprod\as\project\misc_pj\se240-180ave_reysugui.apr

