

**Parks, Trails, and Open Space Replacement Levy Planning Report:
Petrovitsky and Summit Parks**

Prepared in accordance with
the 2017-2018 Biennial Budget Ordinance, Ordinance 18409, Section 92, as amended
by Ordinance 18766, Section 40, Proviso P2

September 2018



King County

Department of Natural Resources and Parks
Parks and Recreation Division

Introduction

The King County 2017-2018 Biennial Budget Ordinance, Ordinance 18409, Section 92, as amended by Ordinance 18766, Section 40, Proviso P2 requires the King County Executive to transmit a report to the Council describing how plans for a parks, trails and open space replacement levy will include provisions to provide parking improvements that will serve the needs of the community at Petrovitsky Park and Summit Park in Maple Valley.

Specifically, the Ordinance requires the following:

Of this appropriation, \$50,000 shall not be expended or encumbered until the executive transmits a parks, trails and open space replacement levy planning report and a motion that should acknowledge receipt of the report and reference the subject matter, the proviso's ordinance, ordinance section and proviso number in both the title and body of the motion and a motion acknowledging receipt of the report is passed by the council. The parks, trails and open space replacement levy planning report should include but not be limited to:

- A. A description of how plans for a parks, trails and open space replacement levy will include provisions to provide new and expanded parking options at Petrovitsky Park that will serve the needs of the community and meet the demand for usage at the park; and
- B. A description of how plans for a parks, trails and open space replacement levy will include provisions to provide trailhead and parking improvements for the Cedar to Green Trail at Summit Park in Maple Valley, in consultation with the city of Maple Valley.

The executive should file the plan and the motion required by this proviso by September 27, 2018.

Executive Summary

This report describes how King County will include provisions for new and/or expanded parking options at Petrovitsky Park and provisions to provide trailhead and parking improvements for the Green to Cedar Rivers Trail at Summit Park in Maple Valley in the 2020-2025 parks levy.

Report

A. Petrovitsky Park

The Parks and Recreation Division of the Department of Natural Resources and Parks (Parks) owns Petrovitsky Park, home to an active play area, baseball and soccer fields, and a natural area, with steep slopes and forest, totaling approximately 88 acres of land. The park is open daily from dawn to dusk and is operated and maintained by Parks.

Kent/Covington Youth Soccer is one of the major users of the turf soccer fields at this park, as well as a variety of baseball leagues. Scheduling reports indicate that peak usage of Petrovitsky Park typically occurs from March through the beginning of July and late August through the end of November, when baseball and soccer leagues are in season. Overall, Petrovitsky Park is heavily used throughout the year.

Currently there is a parking lot located in the southwest corner of Petrovitsky Park with approximately 200 parking stalls. In the park, there are significant constraints to building additional parking. On the north and west sides of the baseball fields, the park has critical areas including wetlands and heavily forested steep slopes which are largely undevelopable (Exhibit A).

In the 2020-2025 parks levy Parks will conduct a parking study to look at alternatives to provide new and/or expanded parking that will serve the needs of the community and meet the demand for usage by the park users. The parking study will include assessing potential usable space on the existing Petrovitsky Park property. It will also include options to partner with other agencies who own parking infrastructure nearby such as the Kent School District and the King County Sheriff's Office.

B. Summit Park

In 2015, the City of Maple Valley developed a master plan for Summit Park, a community park site to serve the community, parks and recreation programs and nearby public school athletic teams. The site is approximately 14 acres and located near the Green to Cedar Rivers Trail. In July 2018, the City of Maple Valley awarded a construction contract to build the new park.

Parks supports the City of Maple Valley's proposal for development of this community park and is collaborating closely with Maple Valley to complete the project. This includes agreement in concept with the City's plans to develop trailhead and parking improvements that could serve the Green to Cedar Rivers Trail (Exhibit B).

Trailhead access improvements, along with other critical needs, will be a high priority for the 2020-2025 parks levy. If the current collaborative effort does not yield trailhead and parking improvements, a parking study will be conducted to provide options for planned parking at Summit Park.

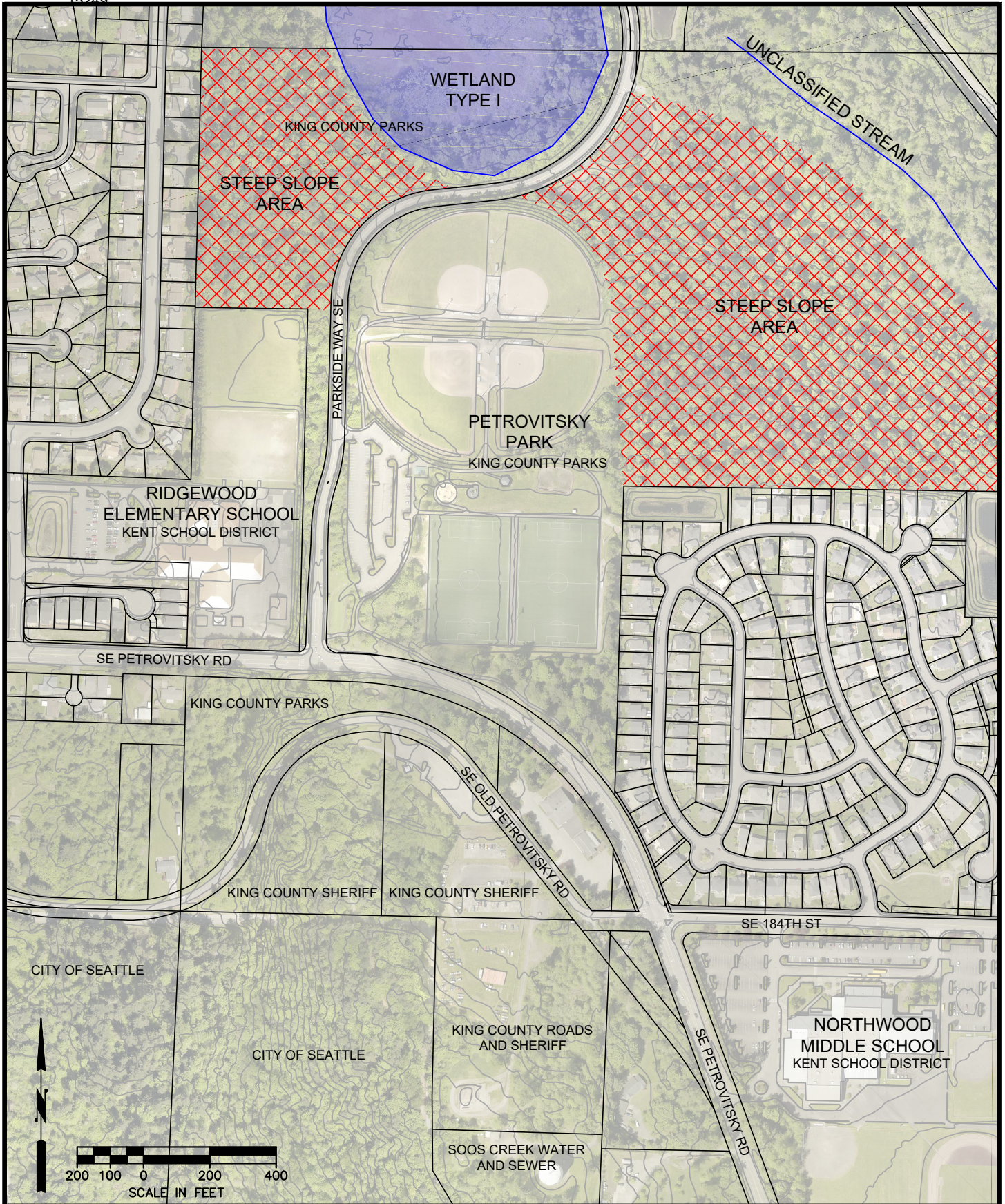
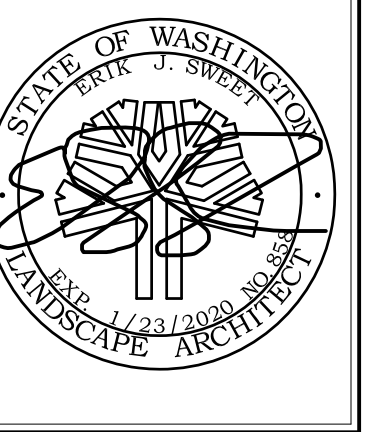


EXHIBIT A: PETROVITSKY PARK SITE & CRITICAL AREAS



King County

Department of Natural Resources and Parks
Parks and Recreation Division



SITE PLAN LEGEND

- GALVANIZED CHAINLINK FENCING FOR FIELDS AND SITE
- SYNTHETIC TURF FIELD SURFACING
- PLAYGROUND SURFACING - MEETING ALL ADA/NIPSI STANDARDS FOR SAFE PLAYGROUNDS
- ACRYLIC COURT SURFACING SPORTS COURT
- MOWED LAWN AREA SEEDING
- MEADOW GRASS AREA SEEDING
- DOG PARK SURFACING MATERIALS
- ASPHALT PAVING AREA
- HARDSCAPE SIDEWALK AND PAVING
- BIO RETENTION LANDSCAPING
- BUFFER PLANTING - EXISTING AND ENHANCED VEGETATION

SUMMIT PARK & BALLFIELDS
 CITY OF MAPLE VALLEY PARKS AND RECREATION
 23675 SE TAHOMA WAY
 MAPLE VALLEY, WA 98038

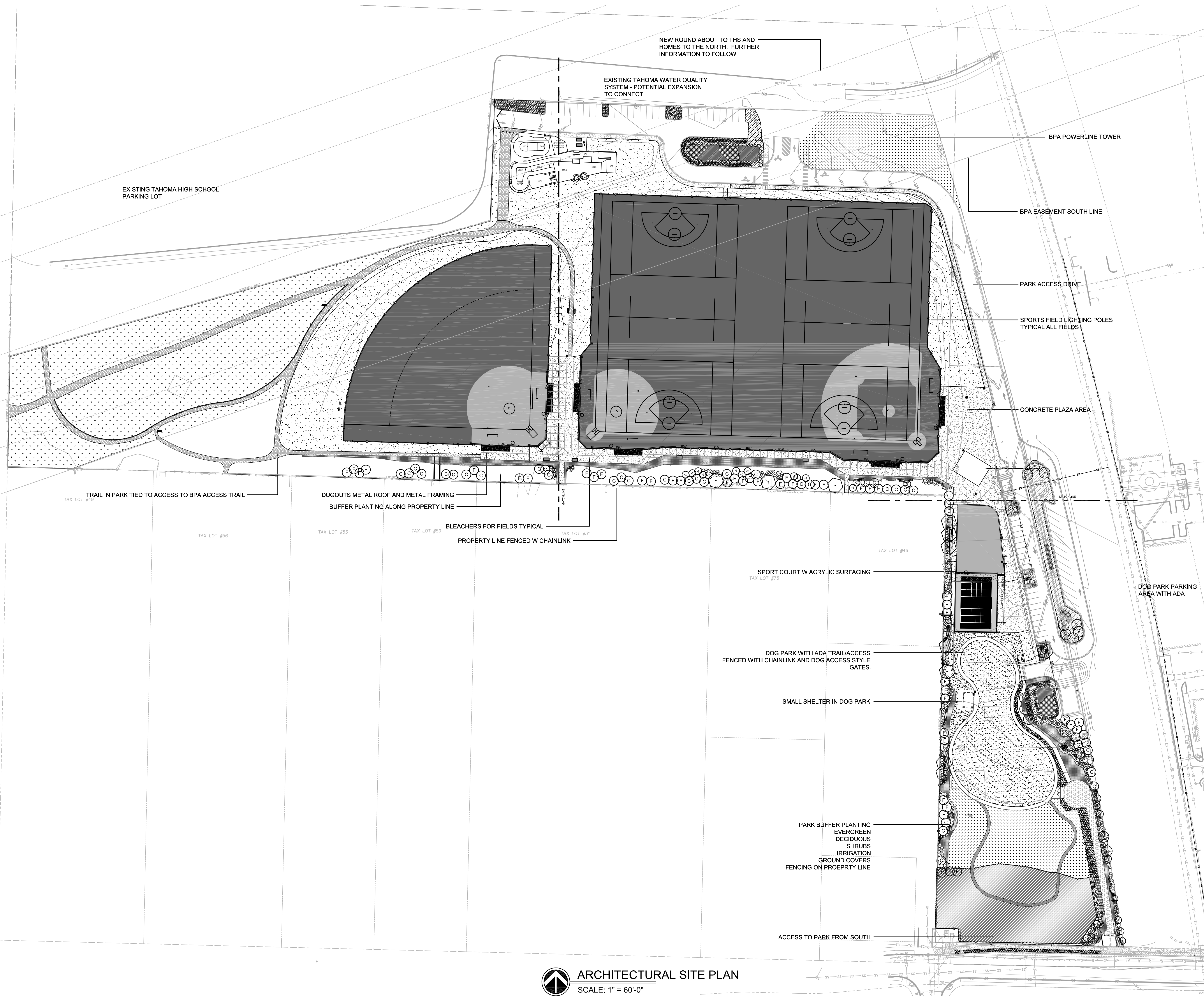


23530 SE 456th Way
 Enumclaw, WA 98022
 P (425) 766-9535
 F (425) 793-4276

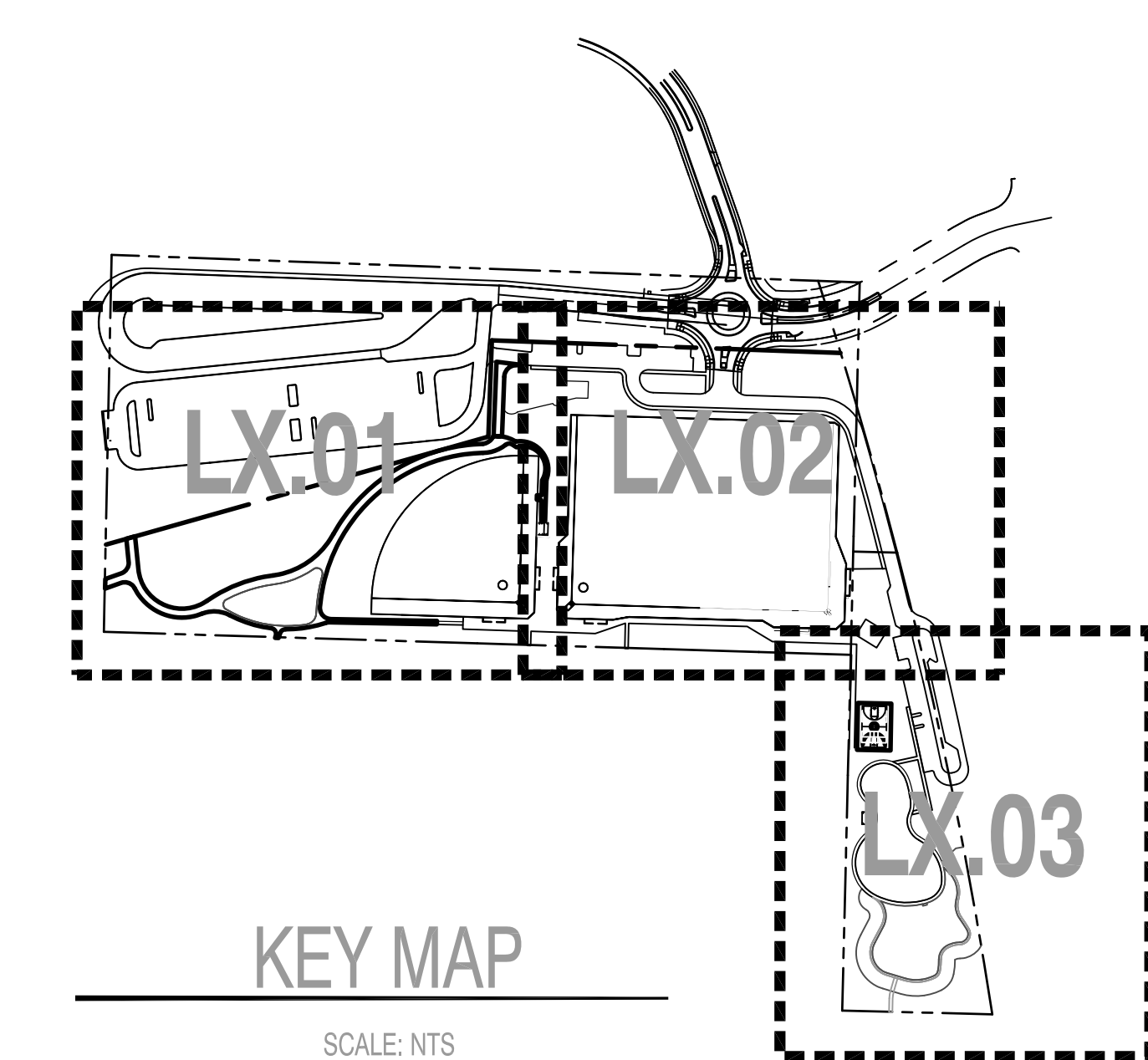
Drawing:
SITE PLAN

Date: 5/25/2018
 Job #: 2016-
 Scale: NTS
 Design: EJSW
 Drawn: EJSW
 Check: EJSW
 Revisions:

Sheet:
G1.03



ARCHITECTURAL SITE PLAN
 SCALE: 1" = 60'-0"



PWE1803-001
 PERMIT SET: 05.25.2018

APPROVED
 APPROVED SUBJECT TO CORRECTIONS NOTED.
 DATE: _____
 BY: _____
 CITY OF MAPLE VALLEY PUBLIC WORKS DEPARTMENT