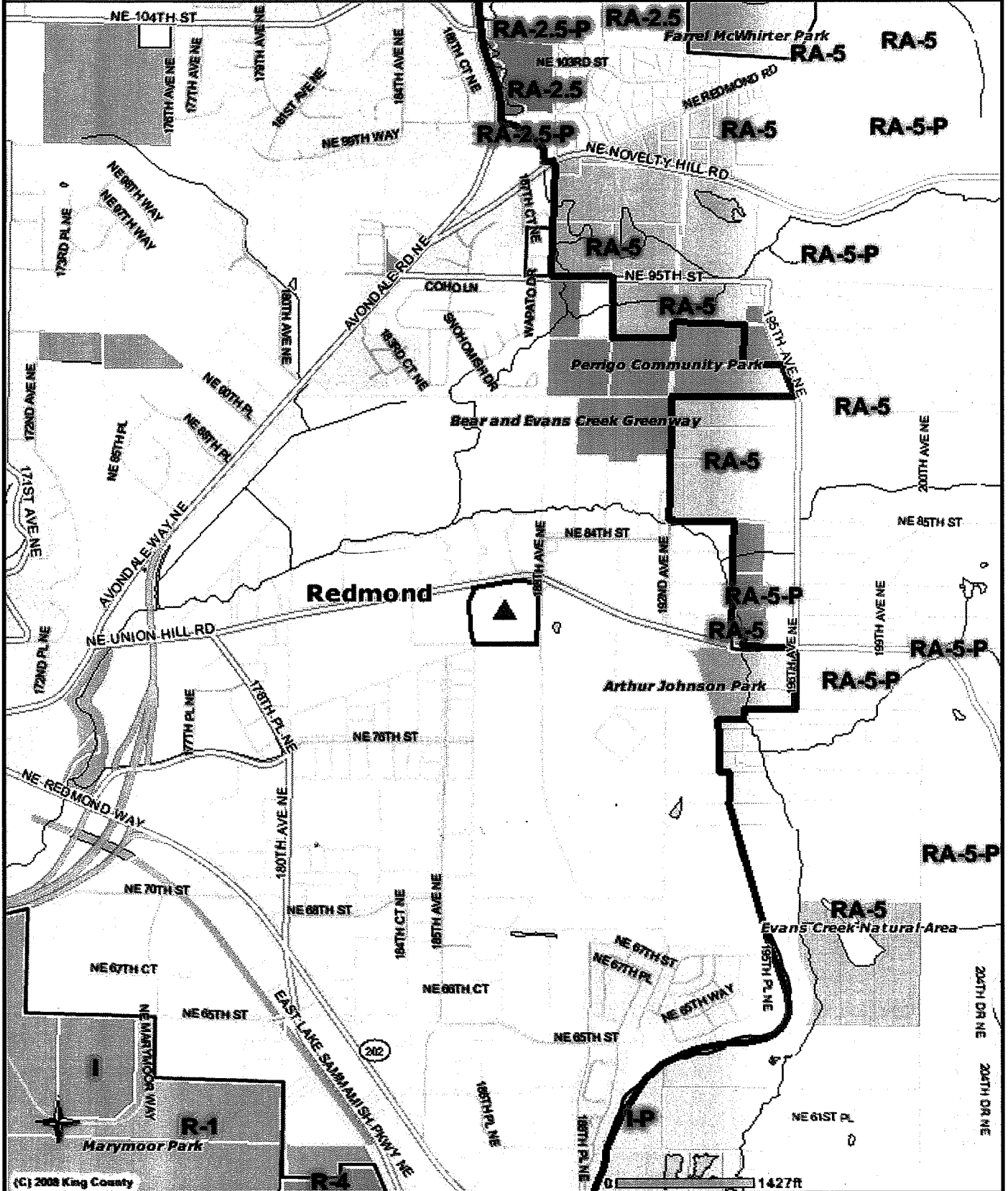


VAN DISTRIBUTION CENTER



(C) 2008 King County

COMMENTS: ASSESSOR'S PARCEL #062506-9016

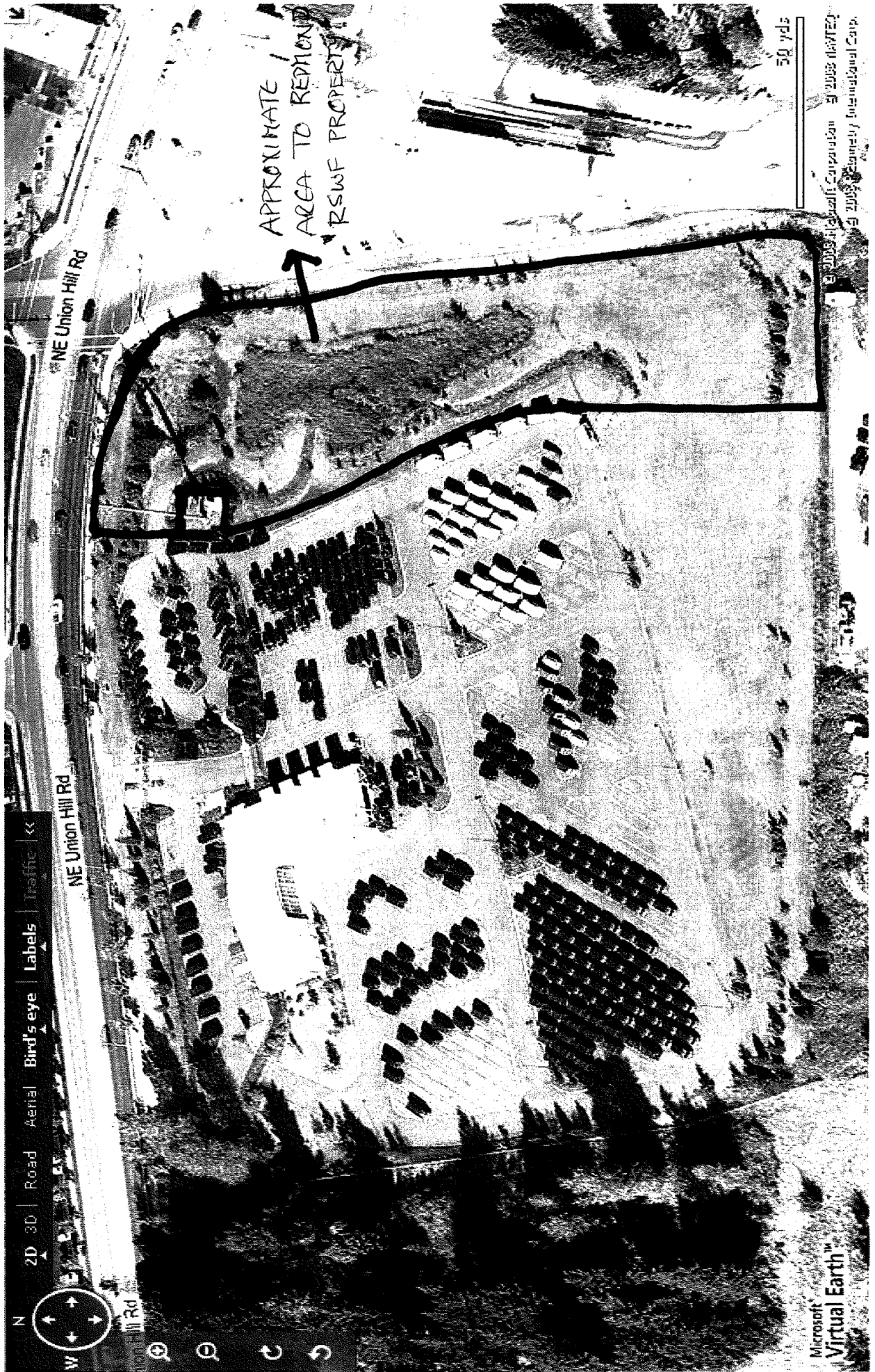
The information included on this map has been compiled by King County staff from a variety of sources and is subject to change without notice. King County makes no representations or warranties, express or implied, as to accuracy, completeness, timeliness, or rights to the use of such information. This document is not intended for use as a survey product. King County shall not be liable for any general, special, indirect, incidental, or consequential damages including, but not limited to, lost revenues or lost profits resulting from the use or misuse of the information contained on this map. Any sale of this map or information on this map is prohibited except by written permission of King County.

Date: 5/29/2009 Source: King County iMAP - Property Information (<http://www.metrokc.gov/GIS/iMAP>)



ENCLOSURE #1

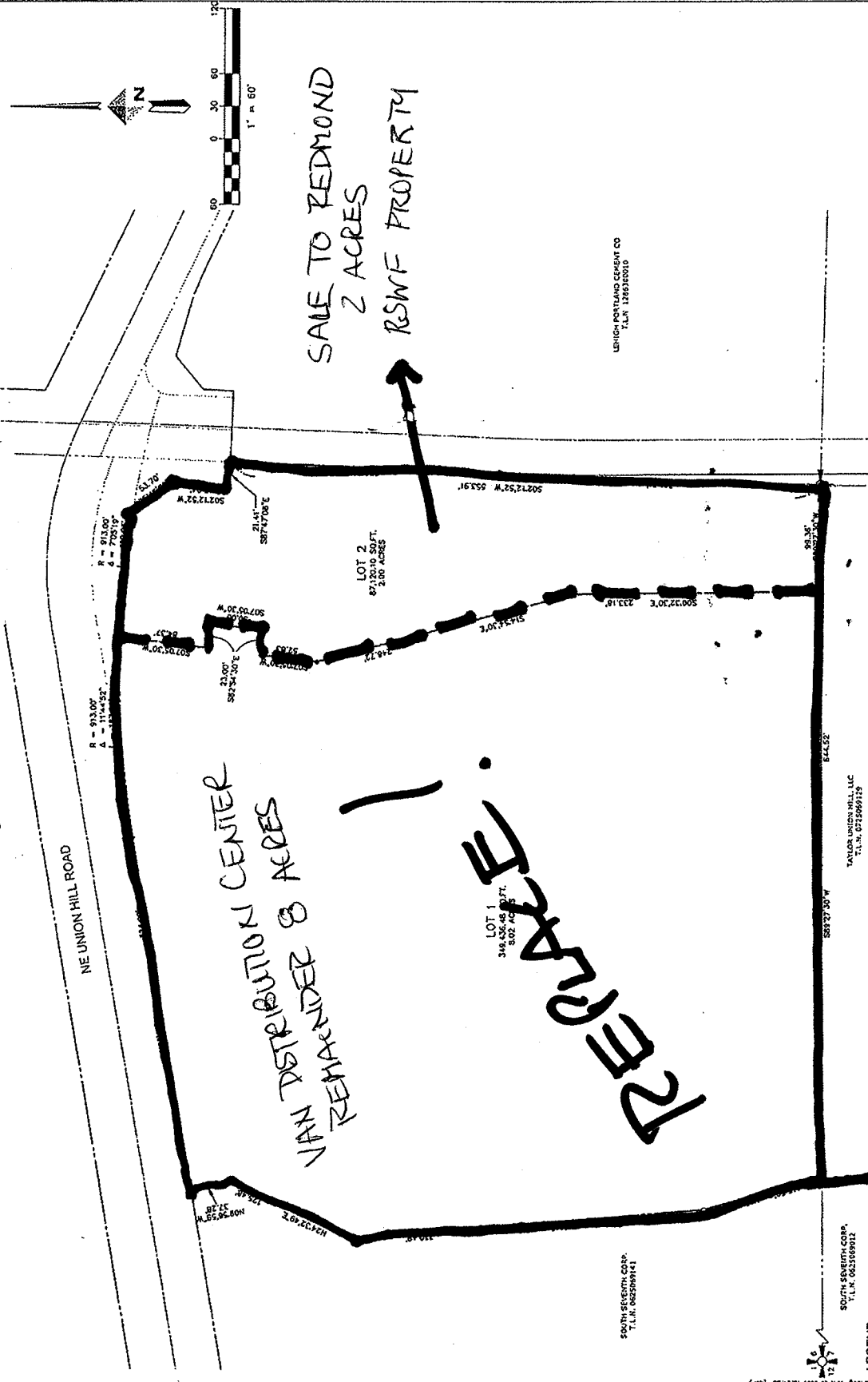
Van Distribution Center, Redmond



ENCLOSURE # 2

VAN DISTRIBUTION CENTER, WMA

PROPOSED BOUNDARY



SOUTH SEVENTH CORP.
T.L.N. 0625099141

SOUTH SEVENTH CORP.
T.L.N. 0625099112

UNION HILL METRO SITE
T.L.N. 0625099173

LEHIGH PORTLAND CEMENT CO
T.L.N. 126910010

UNION HILL METRO SITE REGIONAL DETENTION FACILITY BINDING SITE PLAN CITY OF REDMOND DEVELOPMENT NO. DEV080090 CITY OF REDMOND FILE NO. L080451 A PORTION OF THE SW 1/4, SEC. 6, T.25N., R.6E., W.M., KING COUNTY, WA.	
DWN. BY JMM	DATE 2009-04-29
CHKD. BY RMF	FILE NO. 503-99E
JOB NO. 512879	SHEET 5 OF 8

DOWL H K M
4809 WASHINGTON ST. REDMOND, WA 98073
TEL: (425) 860-2010 FAX: (425) 860-9928



EXISTING	DESCRIPTION	EXISTING	DESCRIPTION
	PROJECT BOUNDARY	(M)	MEASURED DIMENSION
	PROPERTY LINE	(C)	COMPUTED DIMENSION
	CENTERLINE	(D)	DEEDED DIMENSION
	EASEMENT LINE	(#)	REFERENCE DOCUMENT NUMBER
	SECTION LINE		
	SECTION CORNER		

ENCLOSURE #3