

# MIDD 2024 Summary Report

Regional Policy Committee

September 10, 2025

# MIDD 2 Policy Goals

King County Code 4A.500.309

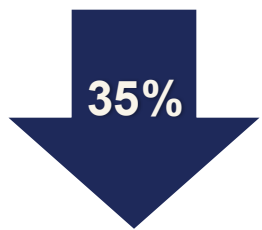
- 1 **Divert** individuals with behavioral health needs from costly interventions, such as jail, emergency rooms and hospitals.
- 2 **Reduce** the number, length, and frequency of behavioral health crisis events.
- 3 **Increase** culturally appropriate, trauma-informed behavioral health services.
- 4 **Improve** health and wellness of individuals living with behavioral health conditions.
- 5 Explicit **linkage** with, and **furthering** the work of King County and community initiatives.

---

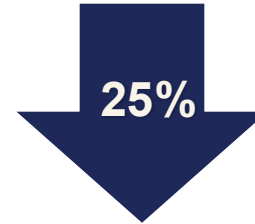
# 54 Initiatives Spread Across Five Strategy Areas

1. Prevention and Early Intervention
2. Crisis Diversion
3. Recovery and Reentry
4. Systems Improvement
5. Therapeutic Courts

# 2024 Key MIDD Accomplishments



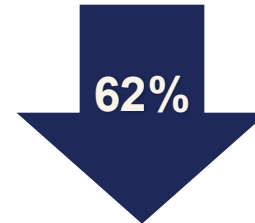
Long-term decrease in psychiatric inpatient admissions



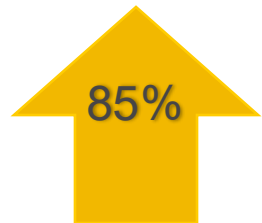
Long-term decrease in emergency department visits



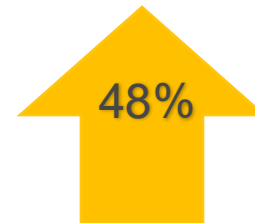
Long-term decrease in jail bookings among adults



Long-term decrease in crisis service episodes among adults



Percent of youth with no additional crisis service episodes

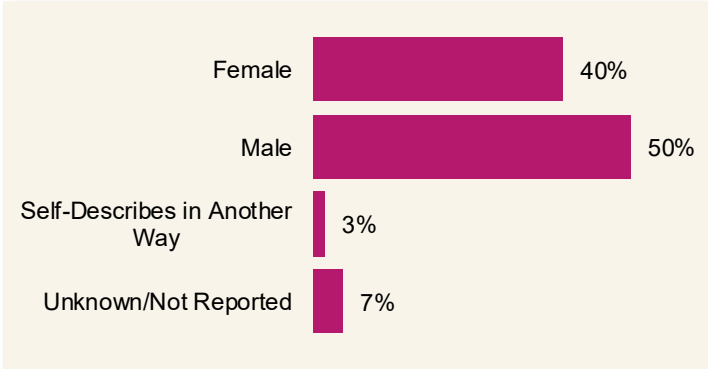


Participants linked to publicly funded behavioral health treatment

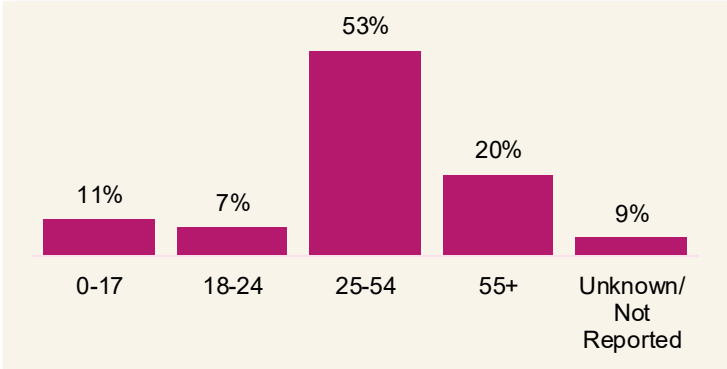
# Who MIDD Served in 2024

TOTAL SERVED: 28,113

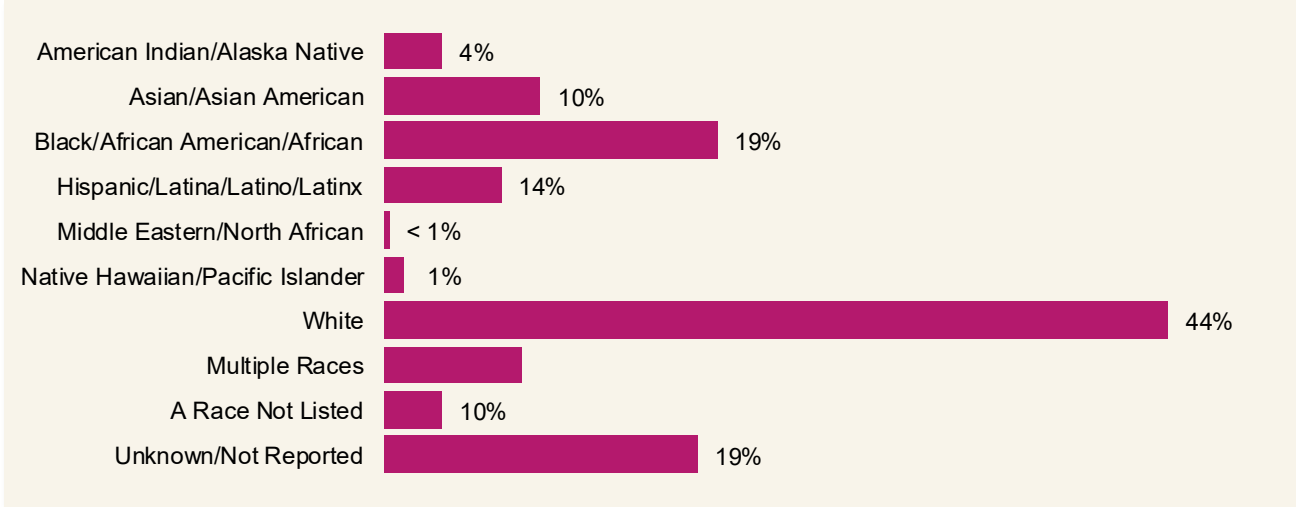
## Gender Identity



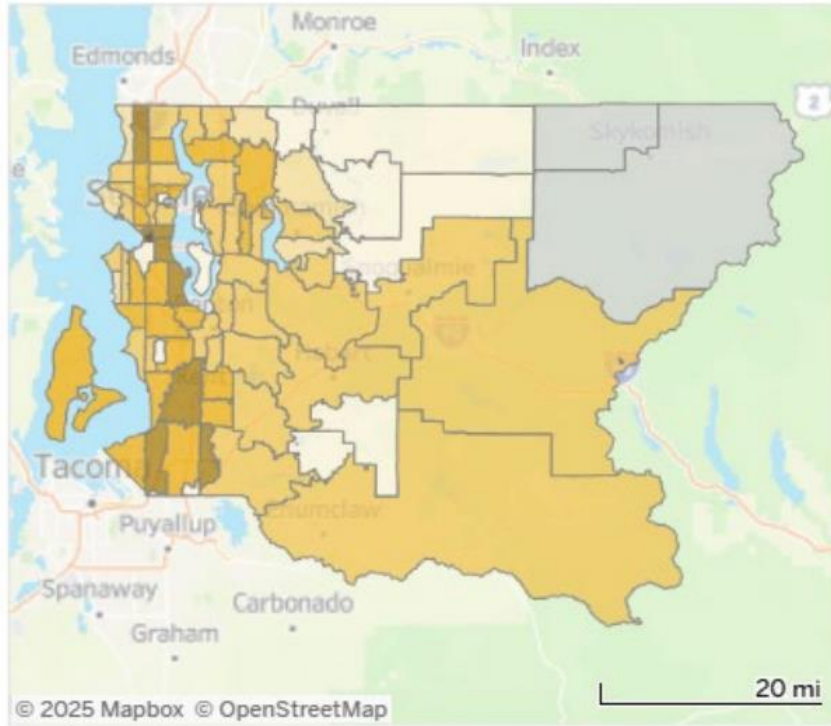
## Age Group (Years)



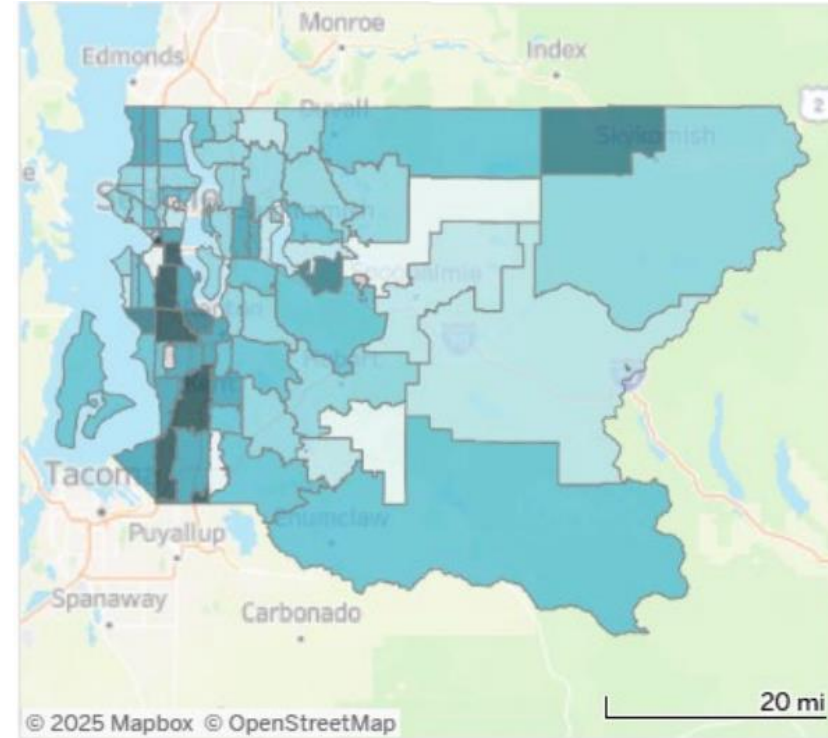
## Race/Ethnicity



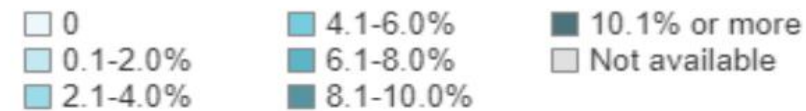
# Where MIDD Participants Live



Number of MIDD participants in each ZIP Code based on last known residence. Darker-shaded ZIP Codes contain more MIDD participants.



Percentage of families in each ZIP Code whose household income is below the Federal Poverty Line (FPL). Darker-shaded ZIP Codes have a higher percentage of families living below the



# 2024 Areas of Focus

- **Workforce:** Growing and sustaining a diverse behavioral health workforce
- **Substance Use:** Addressing fentanyl surge and eliminating barriers to lifesaving medications for opioid use
- **Access:** Reducing barriers and increasing access to care
- **Youth Wellbeing:** Increasing youth access to behavioral health treatment
- **Transitions to Care:** Improving transitions between care settings to keep people engaged in treatment and services

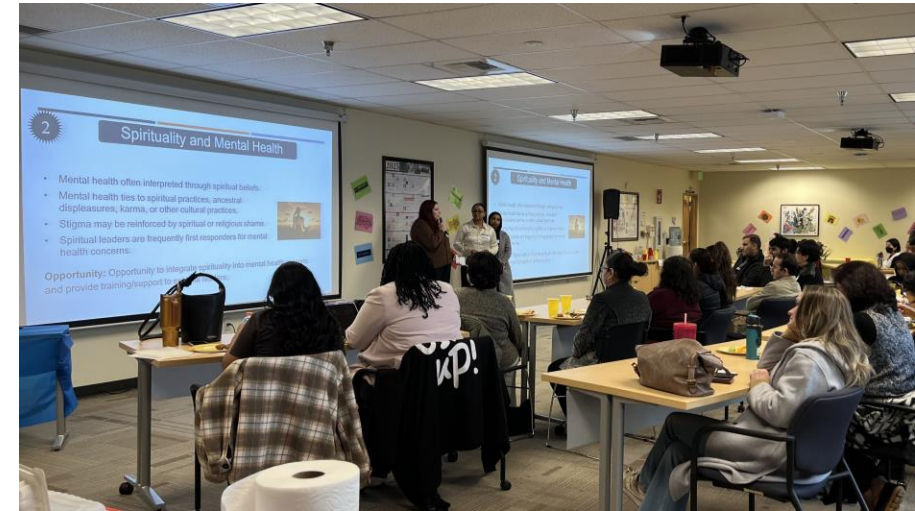
# Addressing opioid use disorder and overdose, reducing barriers to lifesaving medications for opioid use, and increasing mobile care responses

- Provided low barrier buprenorphine coordination and outreach to **1,300** individuals
- Distributed **199,960** naloxone kits and **123,858** fentanyl test strips
- **477** people received on-demand SUD care
- Over **1,700 people** who called 911 in a crisis received a response by a mental health professional



# Reducing Barriers and Increasing Access to Care

- **Be Heard Community Listening Session Project** partnered with 14 culturally centered community organizations to improve programming
- **Community Driven and Rural Behavioral Health Grants** provided tailored interventions to break down barriers to care
- **Over 3,400 people** not eligible for Medicaid received outpatient care
- **13,850 individuals** received outreach and assistance to reconnect to outpatient behavioral health services



Presentation of findings from the Be Heard Listening Sessions: Community Voices on Mental Health and Wellness, funded through SI-01: Community Driven Behavioral Health Grants.

# Increasing Youth Access to Behavioral Health Treatment

- **More than 800 youth** and their families received crisis stabilization service
  - 90% maintained stable housing
  - 85% avoided crises in the following year
- **14,400 youth** were screened through School-Based Screening, Brief Intervention, and Referral to Treatment (SBIRT).
  - Participation among 13 of 19 King County Public School Districts
  - 160 School staff attested to completing training
- Seattle Public Schools launched district-wide opioid prevention and overdose response effort focused on teachers, students, and caregivers

# 2023-2024 Biennium Financial Report

STRATEGY AREA	2023-2024 Budget	2023-2024 Actuals	Percent Spent
Prevention & Early Intervention	\$51,245,320	\$43,787,640	85%
Crisis Diversion	\$65,520,595	\$59,308,695	91%
Recovery & Reentry	\$45,452,920	\$31,839,255	70%
System Improvement	\$14,143,362	\$12,052,970	85%
Therapeutic Courts	\$27,393,829	\$25,544,138	93%
Special Projects	\$20,779,000	\$17,020,695	82%
Administration & Evaluation	\$9,758,763	\$9,004,322	92%
Total	\$234,293,789	\$198,557,715	85%

# 2024 Data Dashboard

To fully explore MIDD’s overall results, visit: [2024 MIDD Data Dashboard](#)  
**2024 Data Dashboard**

2024 Highlights	Who do we serve?	Where do those served live?	How are we performing?	What are our long-term outcomes?	How are we improving?	How much do we invest?	Evaluation Methods & Notes
-----------------	------------------	-----------------------------	------------------------	----------------------------------	-----------------------	------------------------	----------------------------

## 2024 KEY HIGHLIGHTS

*MIDD invests in the community broadly.*



# Questions?

- **Susan McLaughlin**  
Behavioral Health and Recovery Division Director  
[smclaugh@kingcounty.gov](mailto:smclaugh@kingcounty.gov)
- **Isabel Jones**  
Behavioral Health and Recovery Deputy Division Director  
[ijones@kingcounty.gov](mailto:ijones@kingcounty.gov)
- **Robin Pfohman**  
MIDD Coordinator  
[Robin.Pfohman@kingcounty.gov](mailto:Robin.Pfohman@kingcounty.gov)



Department of Community  
and Human Services



Instagram



Blog



YouTube



Website



Data Dashboard