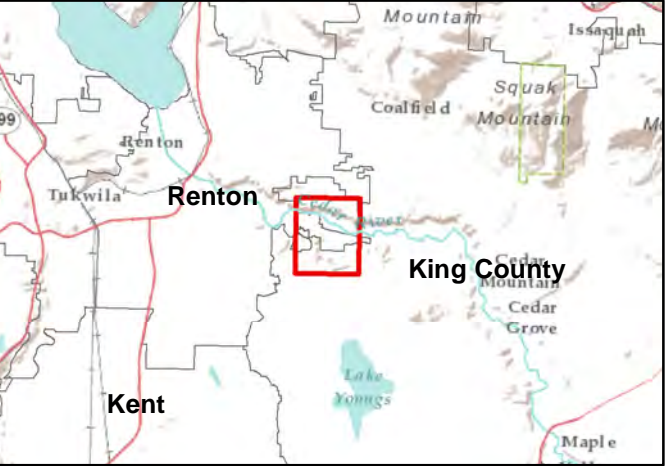


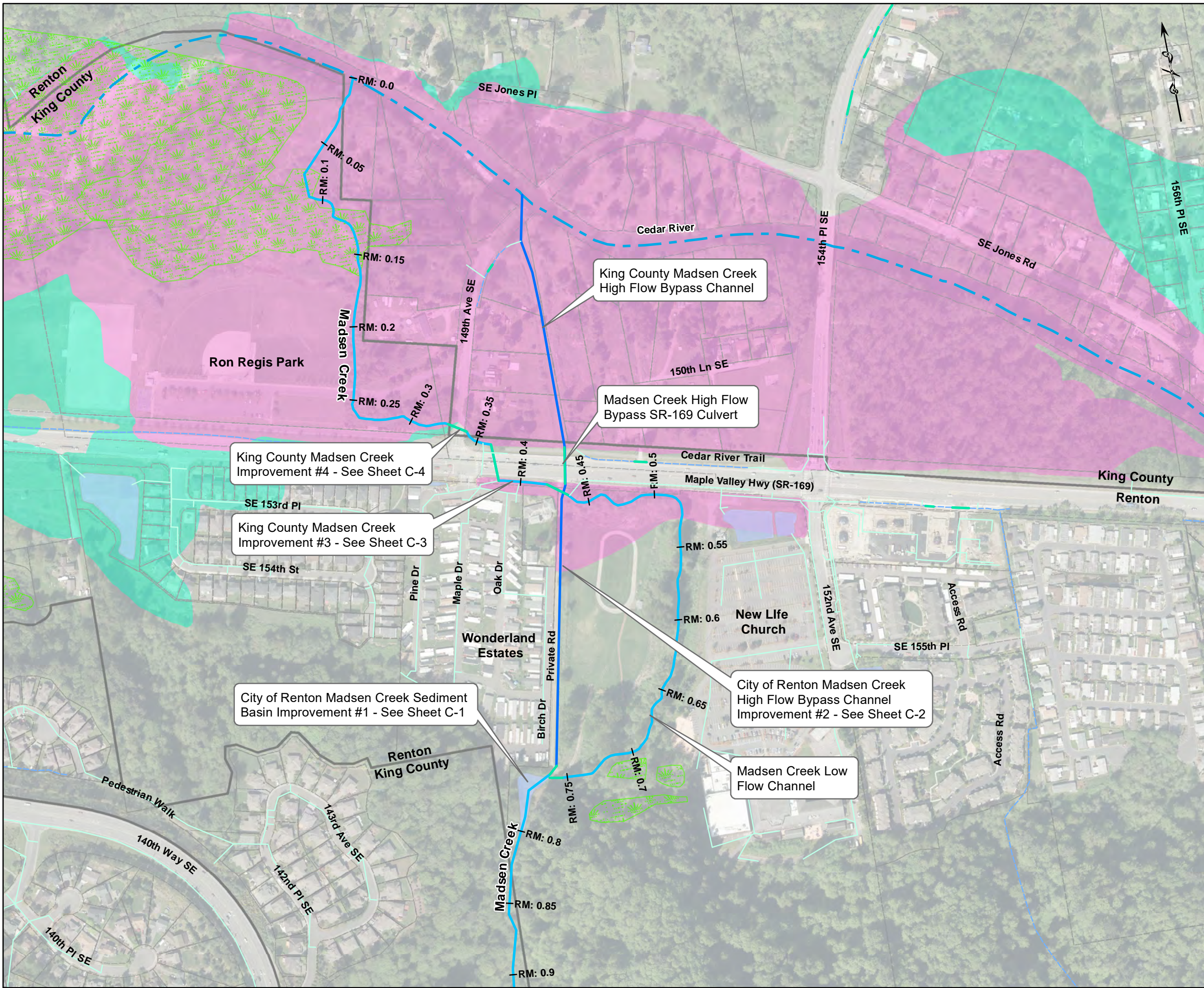
MADSEN CREEK IMPROVEMENT PROJECT EXHIBIT A



NOTES:
 1. RIVER MILE (RM)
 2. FLOOD PLAIN BASED ON DATA TAKEN FROM PRELIMINARY FEMA FIRM PANELS 53033C0984G (2017)

Legend

- Storm Water Pond
- City and County Boundary
- Parcels
- Wetlands
- Project Area
- 100-YR Flood Plain
- 500-YR Flood Plain
- Storm Water Pipe
- Storm Water Culvert
- Storm Water Open Drains
- Madsen Creek High Flow Bypass
- Madsen Creek Main Channel
- Cedar River



King County Madsen Creek Improvement #4 - See Sheet C-4

King County Madsen Creek Improvement #3 - See Sheet C-3

City of Renton Madsen Creek Sediment Basin Improvement #1 - See Sheet C-1

King County Madsen Creek High Flow Bypass Channel

Madsen Creek High Flow Bypass SR-169 Culvert

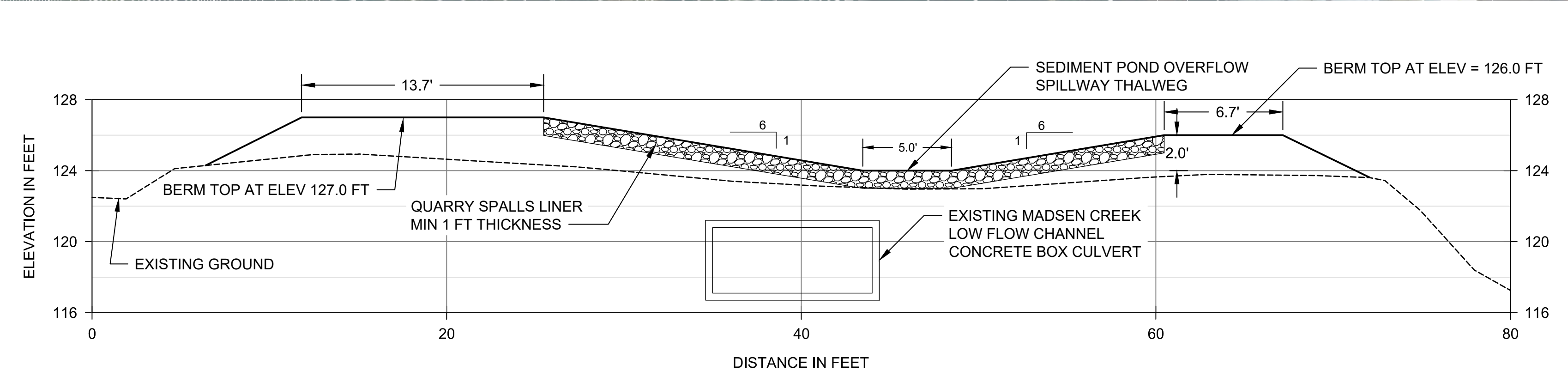
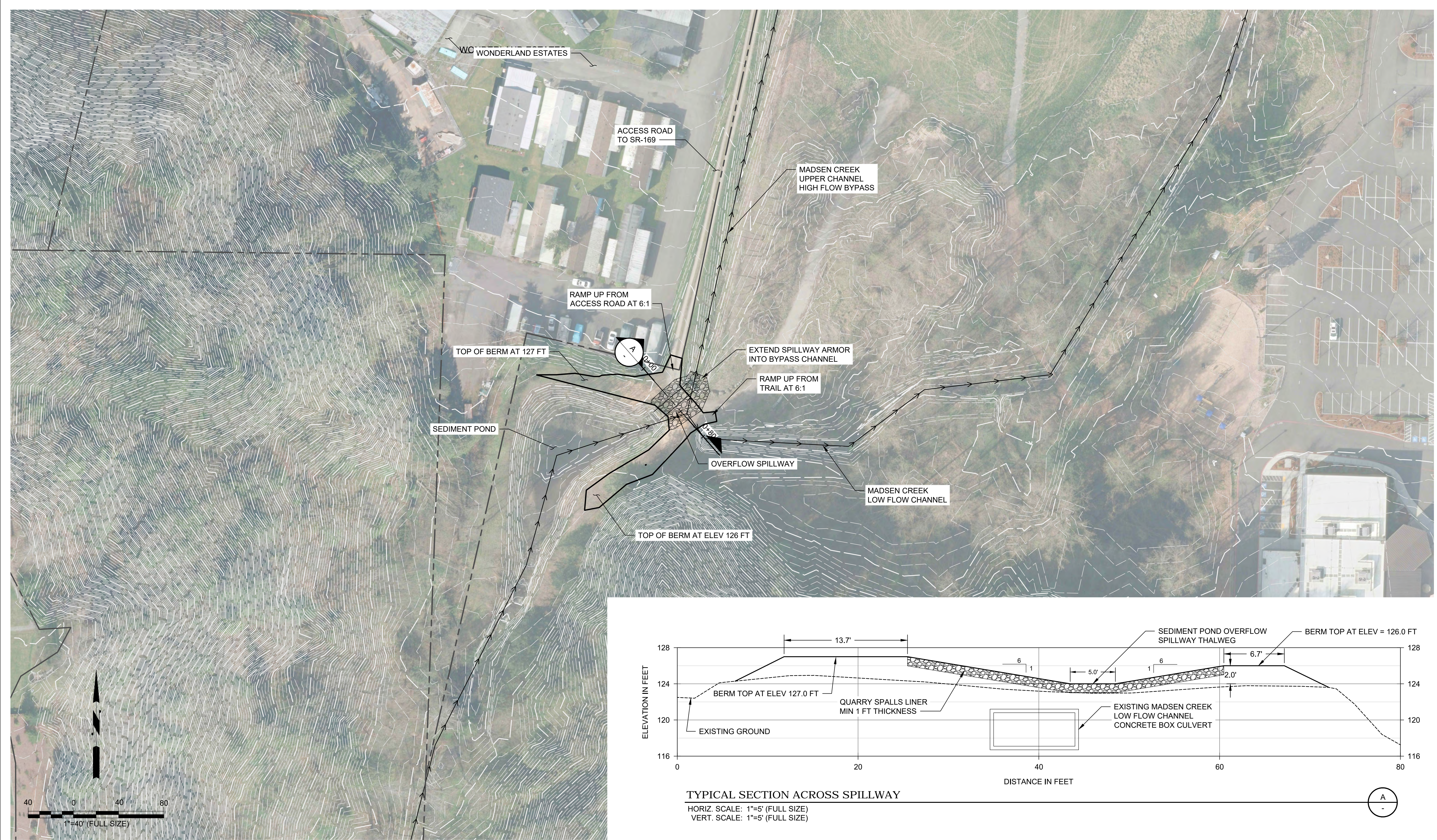
City of Renton Madsen Creek High Flow Bypass Channel Improvement #2 - See Sheet C-2

Madsen Creek Low Flow Channel



CITY OF RENTON
WASHINGTON

ORIGINATED BY: / DATE: /
 CHECKED BY: / DATE: /
 BACK-CHECKED BY: / DATE: /
 CORRECTED BY: / DATE: /
 VERIFIED BY: / DATE: /
 C:\proj\2018\18-06779-000\CADD\DWG\C-1.dwg | 3/15/2019 2:27 PM | Jonathan Waggoner



TYPICAL SECTION ACROSS SPILLWAY

HORIZ. SCALE: 1"=5' (FULL SIZE)
 VERT. SCALE: 1"=5' (FULL SIZE)

CONCEPT DESIGN - NOT FOR CONSTRUCTION				
No.	REVISION	BY	APP'D	DATE



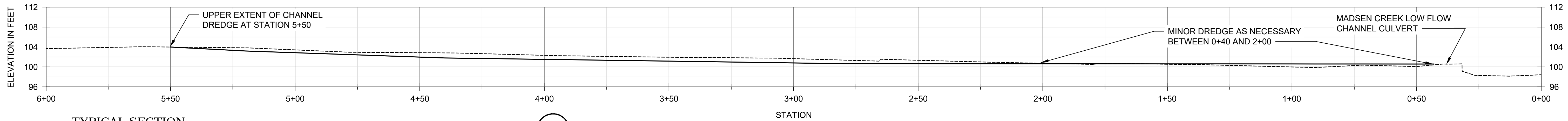
DRAFT

DESIGNED: J. WAGGONER	DRAWN: J. WAGGONER
DESIGNED: -	DRAWN: G. KAYSER
DESIGNED: -	CHECKED: M. EWBANK
SCALE: AS NOTED	APPROVED:

MADSEN CREEK IMPROVEMENT PROJECT

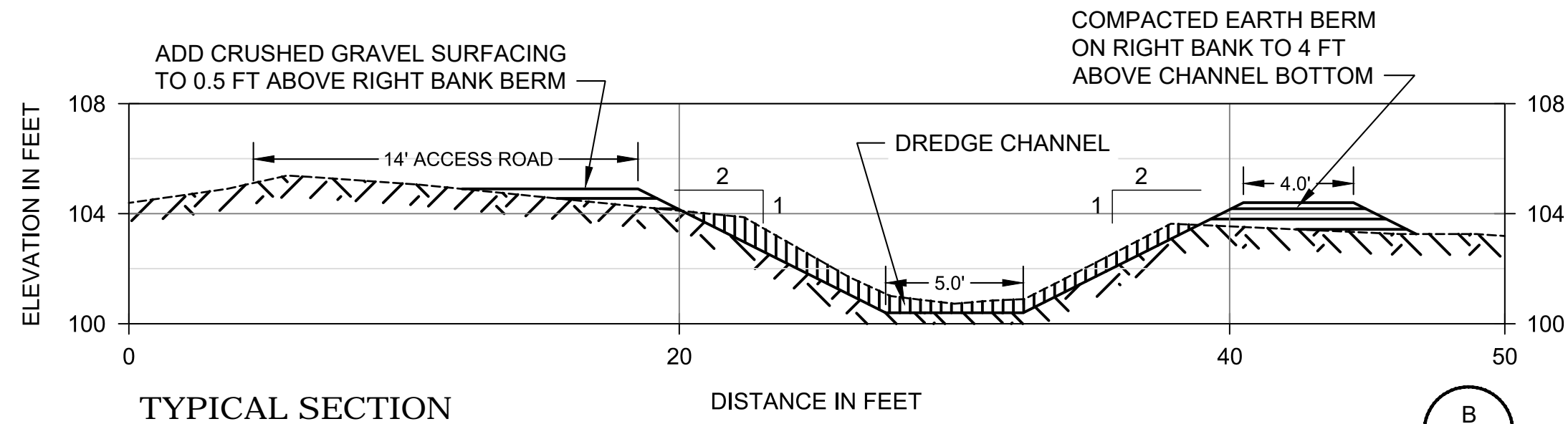
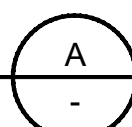
FLOOD REDUCTION ACTION #1
OVERFLOW SPILLWAY FOR SEDIMENT POND

DATE: MARCH 2019
PROJECT NO: 18-06779-000
DRAWING NO: C-1
SHEET NO: 1 OF 4



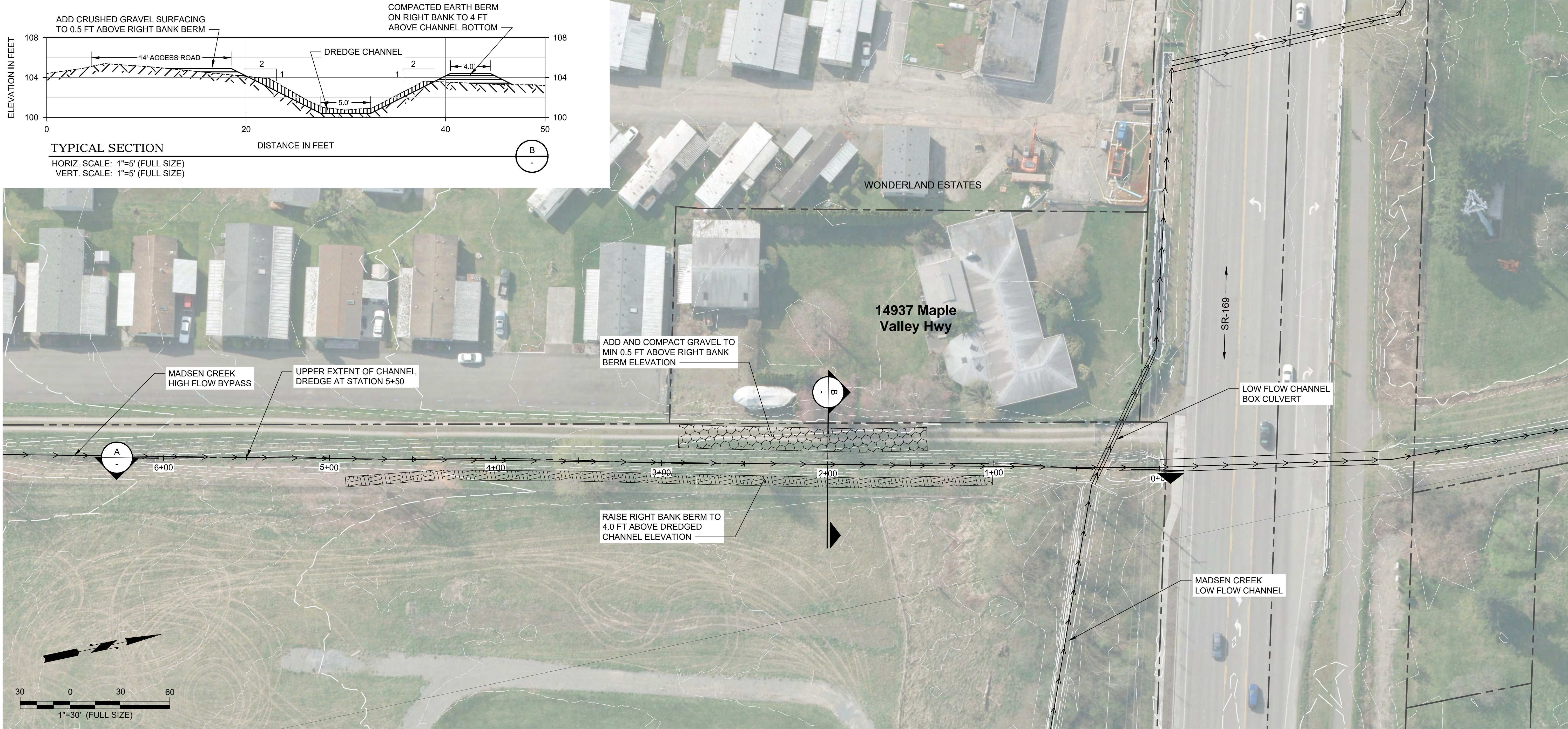
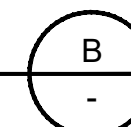
TYPICAL SECTION

HORIZ. SCALE: 1"=20' (FULL SIZE)
VERT. SCALE: 1"=10' (FULL SIZE)



TYPICAL SECTION

HORIZ. SCALE: 1"=5' (FULL SIZE)
VERT. SCALE: 1"=5' (FULL SIZE)



ORIGINATED BY: / DATE: /
 CHECKED BY: / DATE: /
 BACK-CHECKED BY: / DATE: /
 CORRECTED BY: / DATE: /
 VERIFIED BY: / DATE: /
C:\proj\2018\18-06779-000\CADD\DWG\C-1.dwg | 3/15/2019 2:23 PM | Jonathan Waggoner

CONCEPT DESIGN - NOT FOR CONSTRUCTION

ONE INCH
 AT FULL SIZE IF NOT ONE
 INCH SCALE ACCORDINGLY



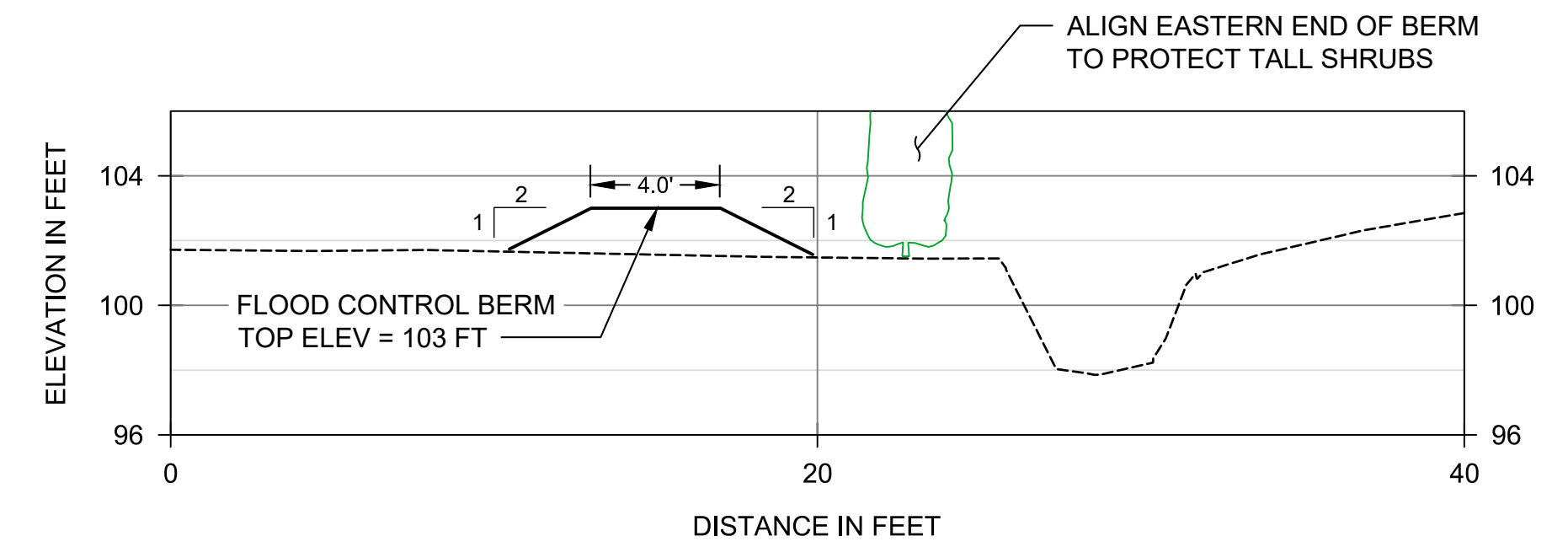
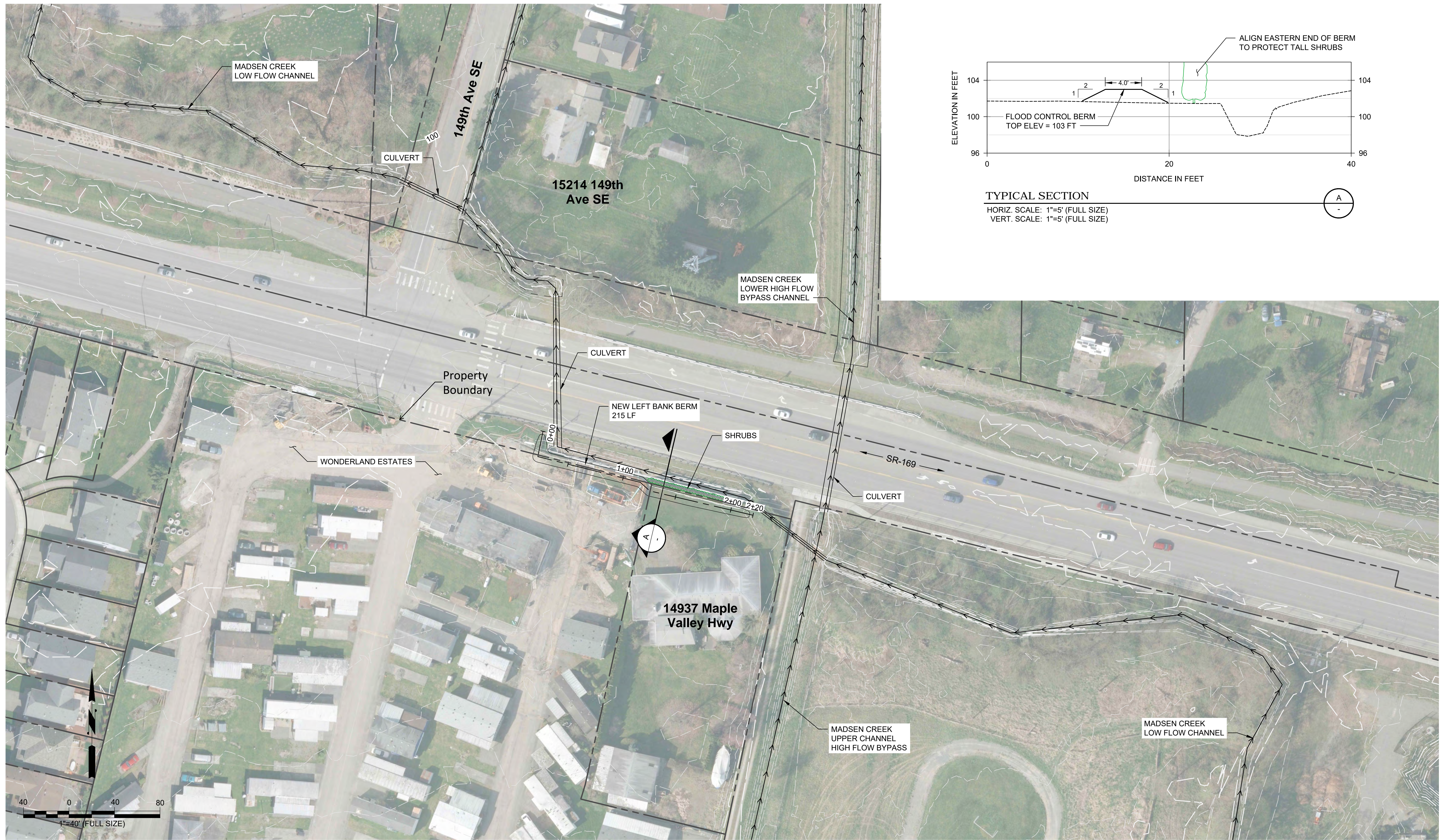
DRAFT

DESIGNED: J. WAGGONER	DRAWN: J. WAGGONER
DESIGNED: -	DRAWN: G. KAYSER
DESIGNED: -	CHECKED: M. EW BANK
SCALE: AS NOTED	APPROVED:

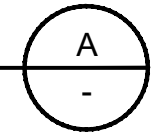
MADSEN CREEK IMPROVEMENT PROJECT

**FLOOD REDUCTION ACTION #2
UPPER HIGH FLOW BYPASS RESTORATION**

DATE: MARCH 2019
PROJECT NO: 18-06779-000
DRAWING NO: C-2
SHEET NO: 2 OF 4



TYPICAL SECTION
 HORIZ. SCALE: 1"=5' (FULL SIZE)
 VERT. SCALE: 1"=5' (FULL SIZE)



ORIGINATED BY: / DATE: /
 CHECKED BY: / DATE: /
 BACK-CHECKED BY: / DATE: /
 CORRECTED BY: / DATE: /
 VERIFIED BY: / DATE: /
C:\proj\2018\18-06779-000\CADD\DWG\C-3.dwg | 3/15/2019 2:23 PM | Jonathan Waggoner

CONCEPT DESIGN - NOT FOR CONSTRUCTION				
No.	REVISION	BY	APP'D	DATE



DRAFT

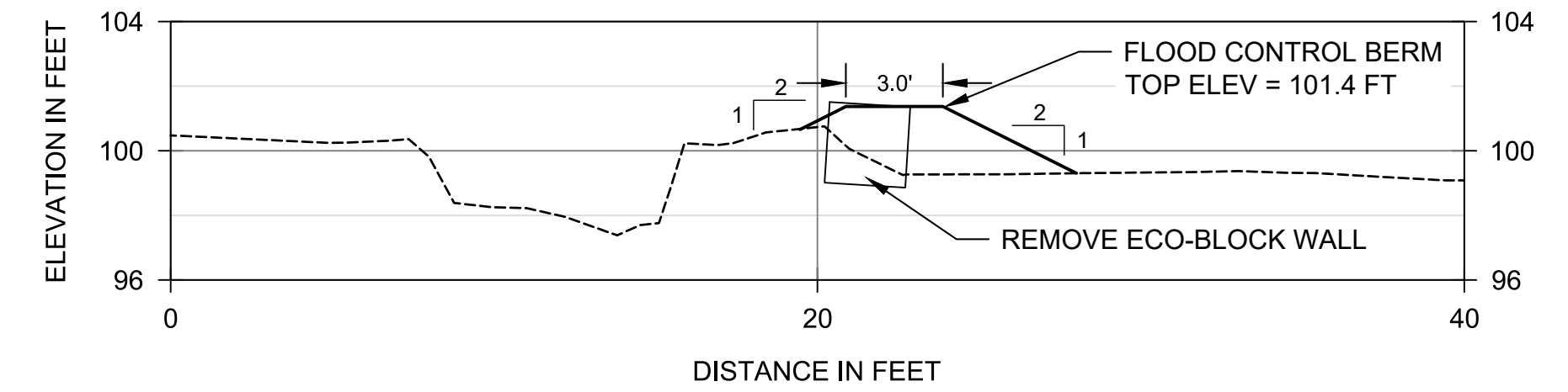
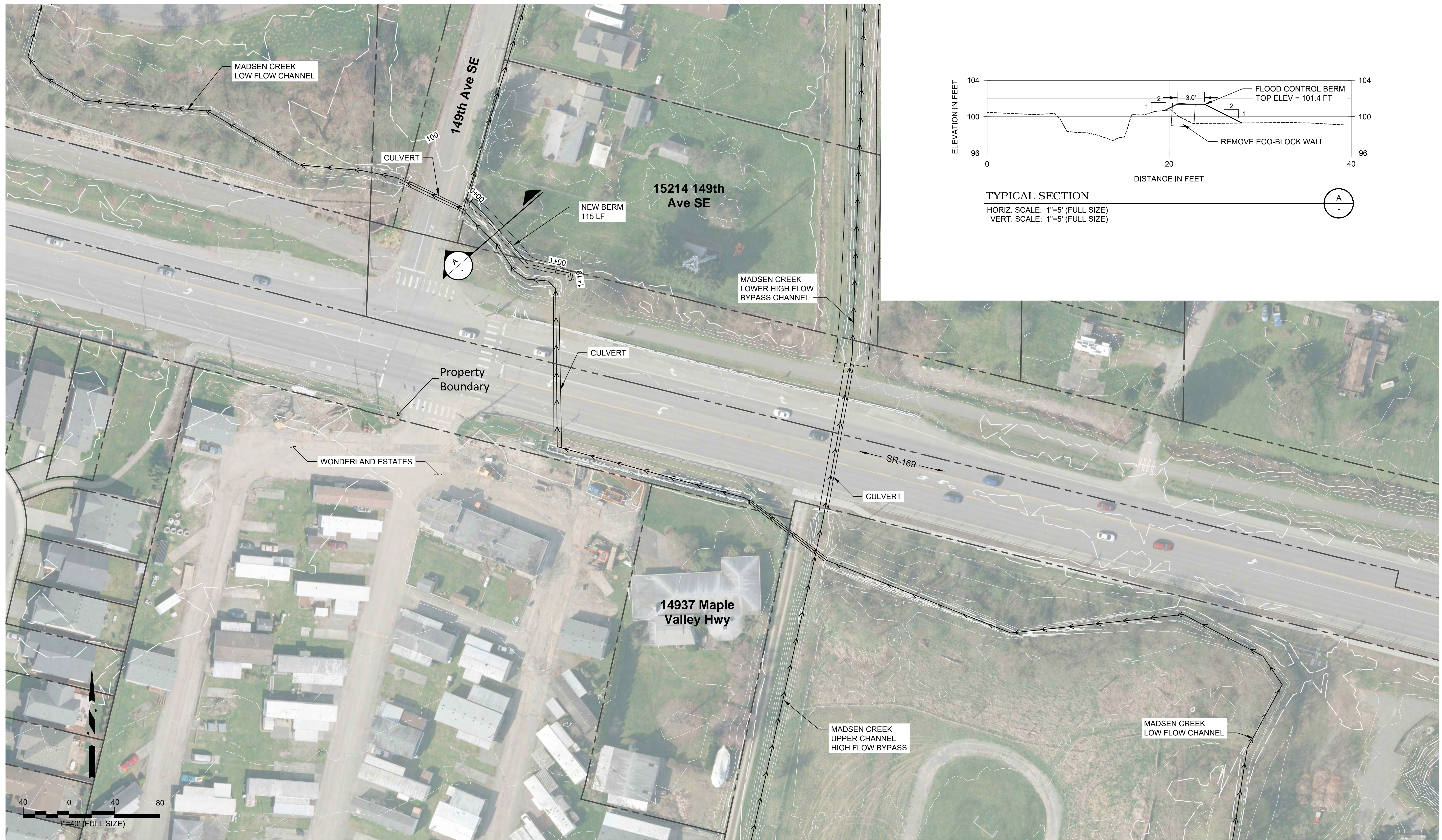
DESIGNED: J. WAGGONER	DRAWN: J. WAGGONER
DESIGNED: -	DRAWN: G. KAYSER
DESIGNED: -	CHECKED: M. EW BANK
SCALE: AS NOTED	APPROVED:

MADSEN CREEK IMPROVEMENT PROJECT

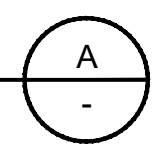
FLOOD REDUCTION ACTION #3
 BERM ON LEFT BANK OF LOW FLOW CHANNEL
 AT WONDERLAND ESTATES

DATE: MARCH 2019
PROJECT NO: 18-06779-000
DRAWING NO: C-3
SHEET NO: 3 OF 4

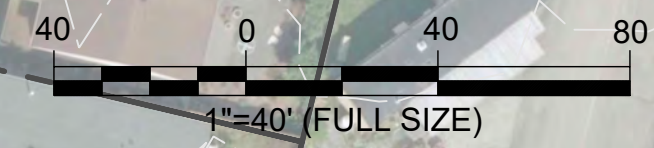
© 2018 Herrera Environmental Consultants, Inc. All rights reserved.



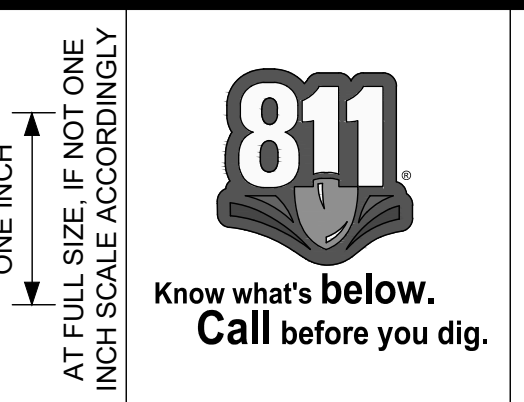
TYPICAL SECTION
 HORIZ. SCALE: 1"=5' (FULL SIZE)
 VERT. SCALE: 1"=5' (FULL SIZE)



ORIGINATED BY: / DATE: /
 CHECKED BY: / DATE: /
 BACK-CHECKED BY: / DATE: /
 CORRECTED BY: / DATE: /
 VERIFIED BY: / DATE: /
C:\proj\2018\18-06779-000\CADD\DWG\C3.dwg | 3/15/2019 2:24 PM | Jonathan Waggoner



CONCEPT DESIGN - NOT FOR CONSTRUCTION				
No.	REVISION	BY	APP'D	DATE



DRAFT

DESIGNED: J. WAGGONER	DRAWN: J. WAGGONER
DESIGNED: -	DRAWN: G. KAYSER
DESIGNED: -	CHECKED: M. EW BANK
SCALE: AS NOTED	APPROVED:

MADSEN CREEK IMPROVEMENT PROJECT

FLOOD REDUCTION ACTION #4
 REPLACE ECO-BLOCKS WITH BERM ON RIGHT BANK DOWNSTREAM OF SR 169

DATE: MARCH 2019
PROJECT NO: 18-06779-000
DRAWING NO: C-4
SHEET NO: 4 OF 4

© 2018 Herrera Environmental Consultants, Inc. All rights reserved.