

# 2004-231

Attachment A  
Property Descriptions  
March 17, 2004

SRP  
Hopkins

Tracts 34 and 35, Block 3, Lakewood Villa Tracts, according to the plat recorded in Volume 29 of Plats, page 32, in King County, Washington;  
Except those portions conveyed for streets in Recording Nos. 5928197, 5928198, and 6475094.

Portal 5G  
Washington Tree Service Inc.

Lot 29 in Block 1 of Rose Addition No. 2, according to plat recorded in volume 34 of Plats at page 26, in King County, Washington;  
Except that portion condemned in King County Superior Court Cause No. 616352 for state highway.

Portal 41  
State Farm

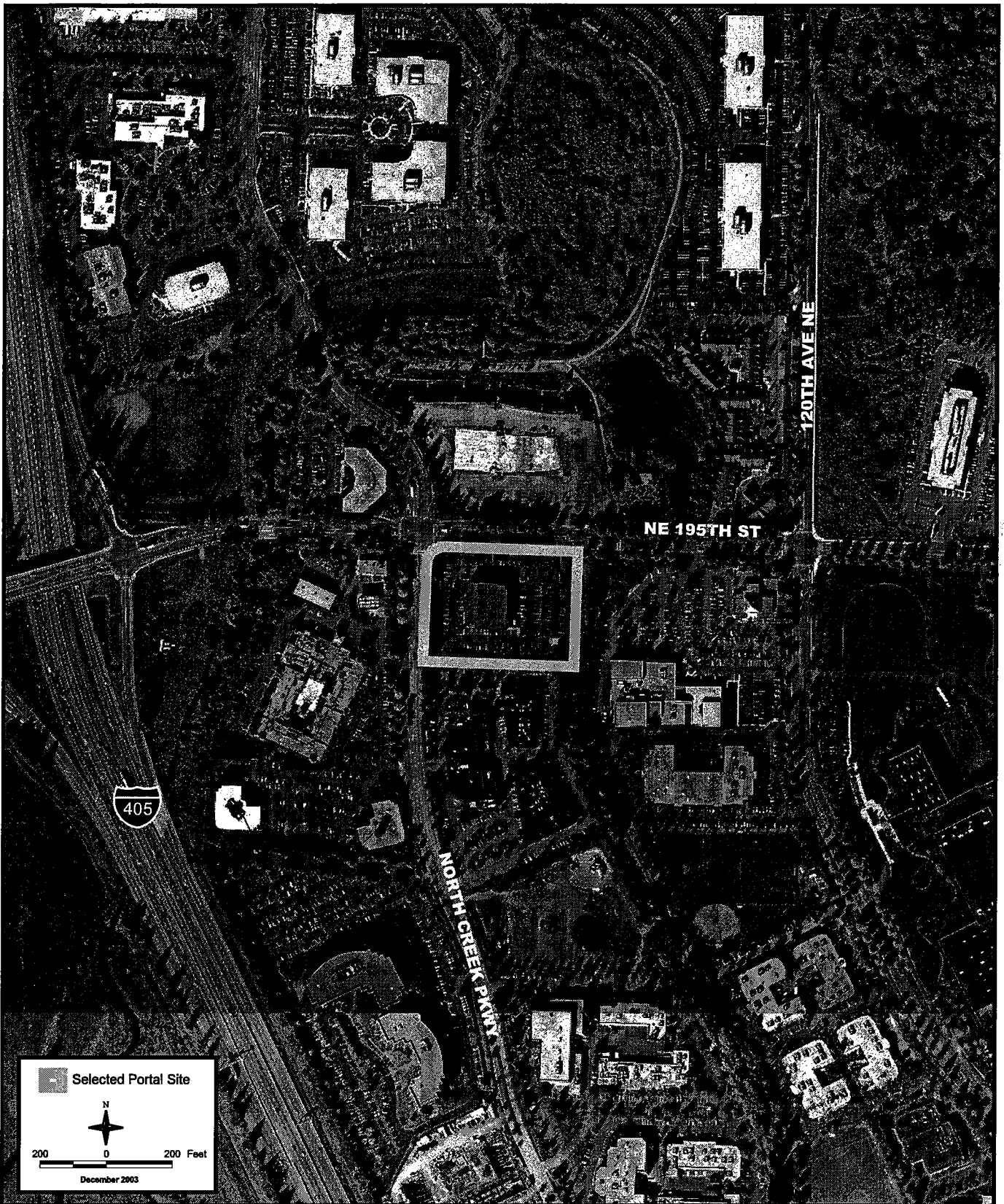
Lots 34 and 35 of Quadrant Business Park-Bothell, according to plat recorded in Volume 131 of Plats at Pages 87 through 91, inclusive, in King County, Washington.



PARCEL A:

THE NORTH 330.71 FEET OF THE NORTHEAST QUARTER OF THE SOUTHEAST QUARTER OF SECTION 1, TOWNSHIP 26 NORTH, RANGE 4 EAST, W.M., IN KING COUNTY, WASHINGTON;  
EXCEPT THE WEST 30 FEET THEREOF CONVEYED TO KING COUNTY FOR 80TH AVENUE NORTHEAST BY DEED RECORDED UNDER RECORDING NO. 2954823.

PARCEL B:

THE NORTHEAST QUARTER OF THE SOUTHEAST QUARTER OF SECTION 1, TOWNSHIP 26 NORTH, RANGE 4 EAST, W.M., IN KING COUNTY, WASHINGTON;  
EXCEPT THE NORTH 330.71 FEET THEREOF;  
ALSO EXCEPT THE SOUTH 413.05 FEET THEREOF;  
ALSO EXCEPT THE WEST 30 FEET THEREOF CONVEYED TO KING COUNTY FOR 80TH AVENUE NORTHEAST BY DEED RECORDED UNDER RECORDING NO. 2954823.



 Selected Portal Site  
  
 200 0 200 Feet  
 December 2003



**King County**  
 Department of  
 Natural Resources and Parks  
**Wastewater Treatment  
 Division**



The information included on this map has been compiled from a variety of sources and is subject to change without notice. King County makes no representations or warranties, express or implied, as to accuracy, completeness, timeliness, or rights to the use of such information. King County shall not be liable to any general, special, indirect, incidental, or consequential damages including, but not limited to, lost revenue or lost profits resulting from the use or misuse of the information contained on this map. Any sale of this map or information on this map is prohibited except by written permission of King County.


Q:\WTPD\Projects\BW\_FEIS\Projects\Portal Map\portal\_parcel\_tav3.apr 5C

**North Creek Portal (41)  
 Selected Site**

**BRIGHTWATER REGIONAL  
 WASTEWATER TREATMENT SYSTEM**



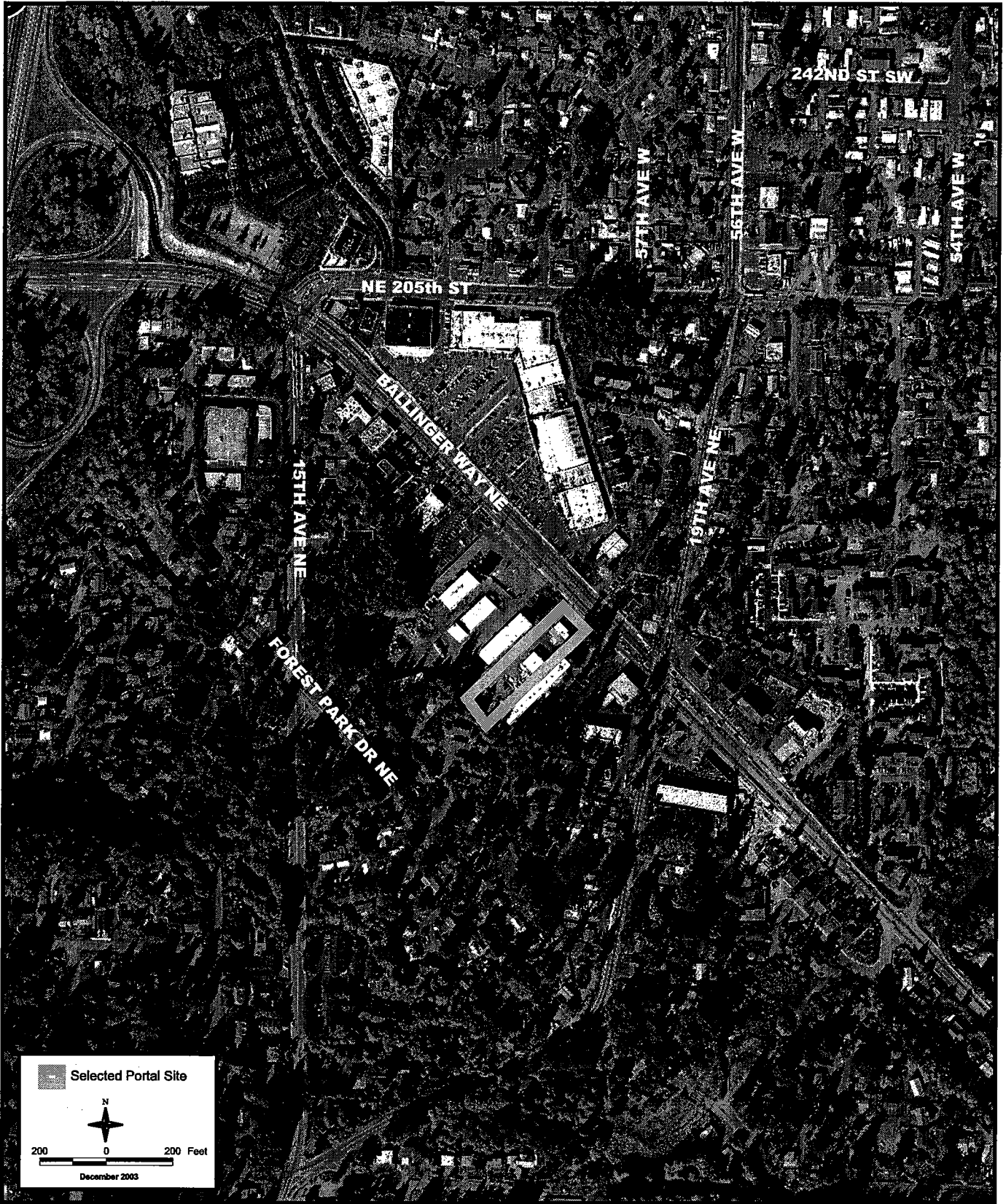
 Selected Portal Site  
  
 200 0 200 Feet  
 December 2003



**King County**  
 Department of  
 Natural Resources and Parks  
**Wastewater Treatment  
 Division**


The information included on this map has been compiled from a variety of sources and is subject to change without notice. King County makes no representations or warranties, express or implied, as to accuracy, completeness, timeliness, or rights to the use of such information. King County shall not be liable in any general, special, indirect, incidental, or consequential damages including, but not limited to, lost revenue or lost profits resulting from the use or misuse of the information contained on this map. Any sale of this map or information on this map is prohibited except by written permission of King County.

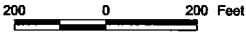
Q:\NWTD\Project\BW\_FEIS\Project\Portal Map\portal\_parcel\_lev3.apr SC

**North Kenmore Portal (44)  
 Selected Site**  
**BRIGHTWATER REGIONAL  
 WASTEWATER TREATMENT SYSTEM**



 Selected Portal Site





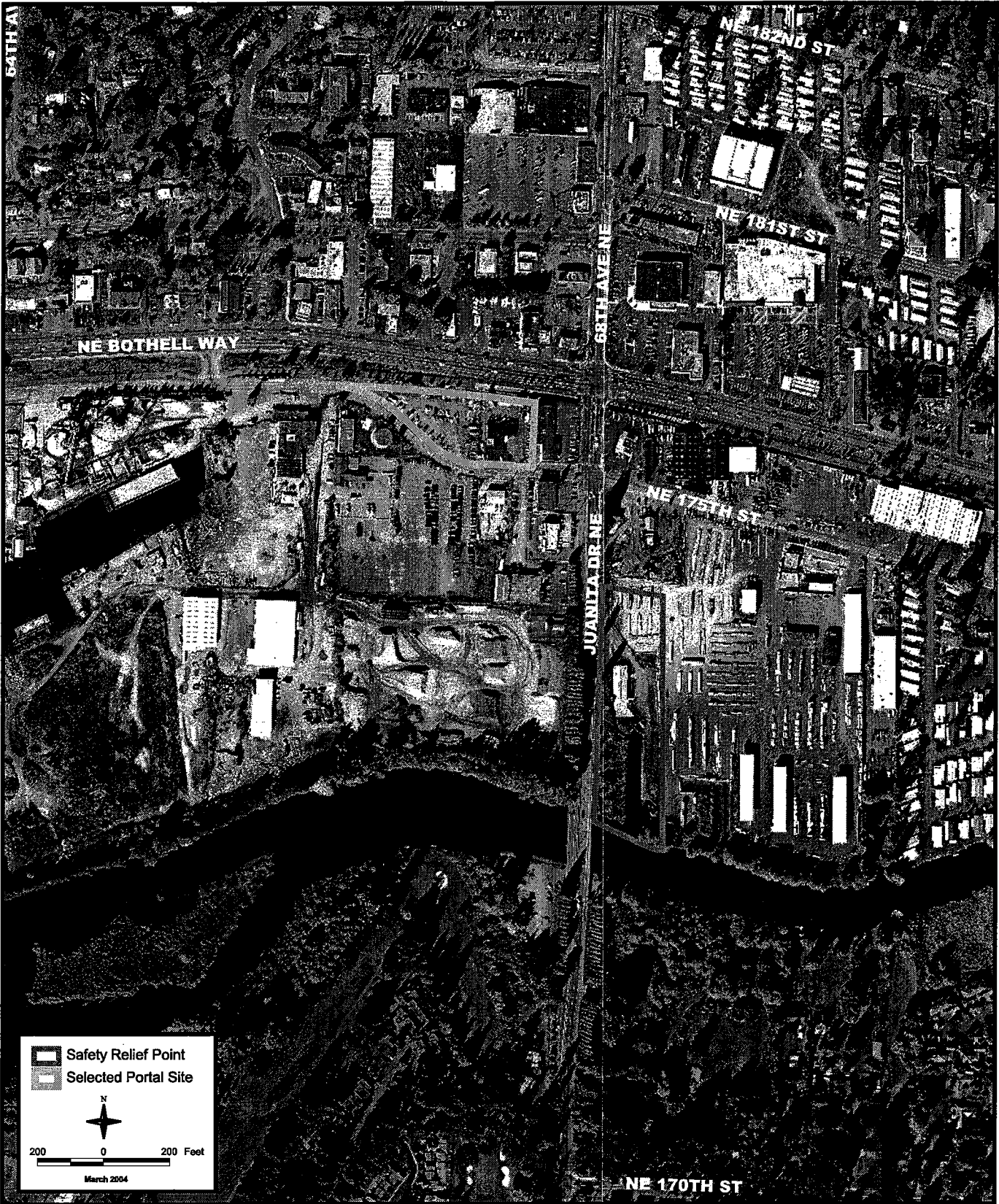
December 2003


**King County**  
 Department of  
 Natural Resources and Parks  
**Wastewater Treatment  
 Division**

The information included on this map has been compiled from a variety of sources and is subject to change without notice. King County makes no representations or warranties, express or implied, as to accuracy, completeness, timeliness, or rights to the use of such information. King County shall not be liable to any general, special, indirect, incidental, or consequential damages including, but not limited to, lost revenues or lost profits resulting from the use or misuse of the information contained on this map. Any sale of this map or information on this map is prohibited except by written permission of King County.

C:\WWTDP\Projects\BW\_FEIS\Project\Portal Maps\portal\_parcel\_lev3.apr SC

**Ballinger Way Portal (5)  
 Selected Site**  
**BRIGHTWATER REGIONAL  
 WASTEWATER TREATMENT SYSTEM**



**King County**  
 Department of  
 Natural Resources and Parks  
**Wastewater Treatment  
 Division**

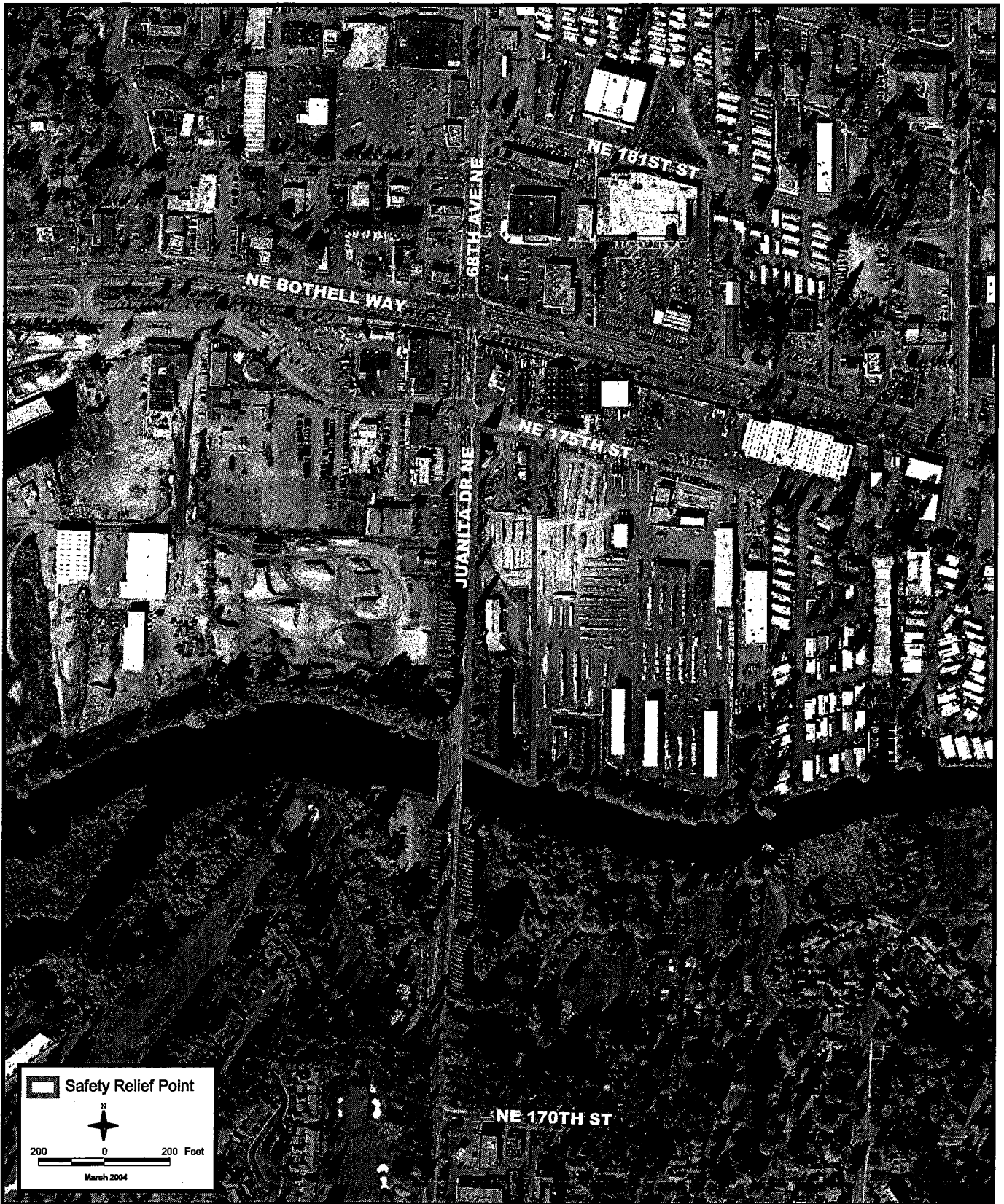
The information included on this map has been compiled from a variety of sources and is subject to change without notice. King County makes no representations or warranties, express or implied, as to accuracy, completeness, timeliness, or rights to the use of such information. King County shall not be liable for any general, special, indirect, incidental, or consequential damages including, but not limited to, lost revenues or lost profits resulting from the use or misuse of the information contained on this map. Any sale of this map or information on this map is prohibited except by written permission of King County.


C:\WWT\Projects\BW\_FEIS\Projects\Portal Map\portal\_parcels\_rev3.apr SC


**Safety Relief Point Site**

**BRIGHTWATER REGIONAL  
 WASTEWATER TREATMENT SYSTEM**





 Safety Relief Point



200 0 200 Feet

March 2004



**King County**  
 Department of  
 Natural Resources and Parks  
**Wastewater Treatment  
 Division**

The information included on this map has been compiled from a variety of sources and is subject to change without notice. King County makes no representations or warranties, express or implied, as to accuracy, completeness, timeliness, or rights to the use of such information. King County shall not be liable to any person for general, special, indirect, incidental, or consequential damages including, but not limited to, lost revenues or lost profits resulting from the use or misuse of the information contained on this map. Any sale of this map or information on this map is prohibited except by written permission of King County.

C:\NWTD\Projects\BW\_FEIS\Projects\Portal Maps\portal\_parcels\_mv3.apr SC

**Safety Relief Point Site**

**BRIGHTWATER REGIONAL  
 WASTEWATER TREATMENT SYSTEM**