

# Establishment Plan

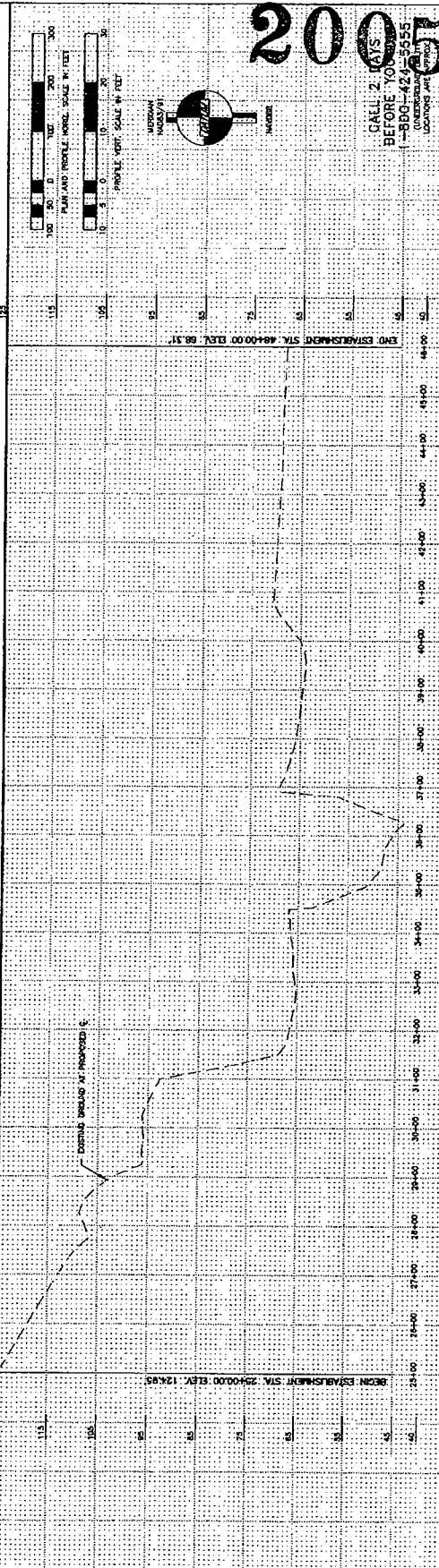
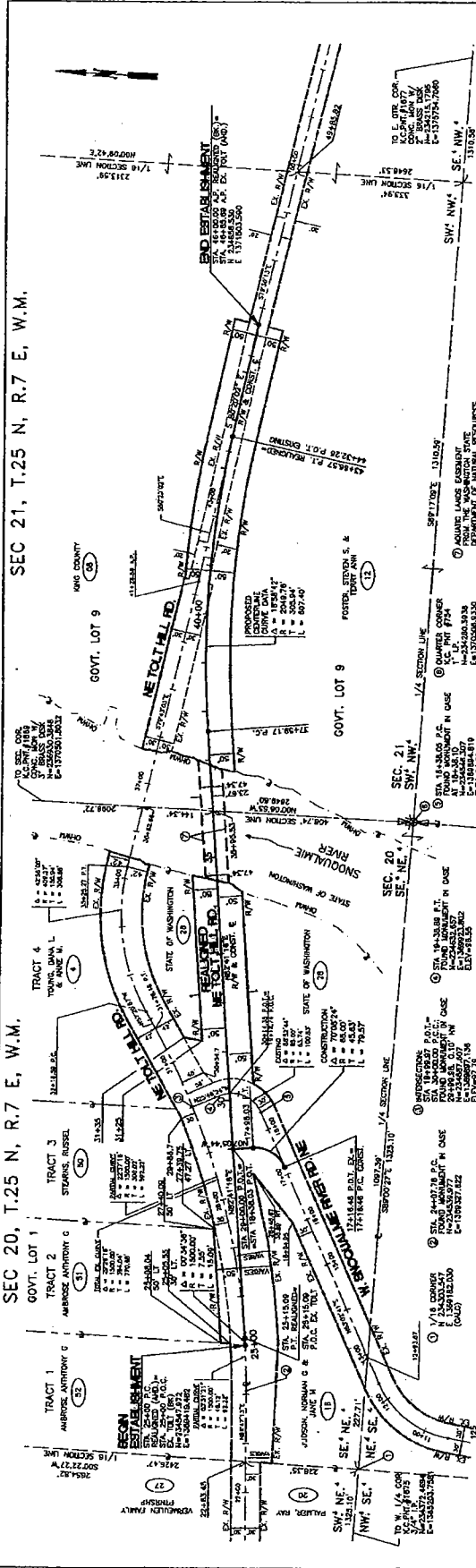
# 15310

Attachment A

## 2005

SEC 21, T.25 N, R.7 E, W.M.

SEC 20, T.25 N, R.7 E, W.M.



TO THE OWNERS OF THE SECTIONS OF LAND ADJACENT TO THE EAST AND WEST OF THE ROAD SHOWN HEREON, THE UNDERSIGNED ENGINEER HAS BEEN CALLED TO SET CORNERS AND MONUMENTS FOR THE ROAD SHOWN HEREON.

TO THE OWNERS OF THE SECTIONS OF LAND ADJACENT TO THE EAST AND WEST OF THE ROAD SHOWN HEREON, THE UNDERSIGNED ENGINEER HAS BEEN CALLED TO SET CORNERS AND MONUMENTS FOR THE ROAD SHOWN HEREON.

TO THE OWNERS OF THE SECTIONS OF LAND ADJACENT TO THE EAST AND WEST OF THE ROAD SHOWN HEREON, THE UNDERSIGNED ENGINEER HAS BEEN CALLED TO SET CORNERS AND MONUMENTS FOR THE ROAD SHOWN HEREON.

TO THE OWNERS OF THE SECTIONS OF LAND ADJACENT TO THE EAST AND WEST OF THE ROAD SHOWN HEREON, THE UNDERSIGNED ENGINEER HAS BEEN CALLED TO SET CORNERS AND MONUMENTS FOR THE ROAD SHOWN HEREON.

SEPTEMBER 14, 2005

FIELD BOOK: \_\_\_\_\_

SURVEY: \_\_\_\_\_

CLIENT: \_\_\_\_\_

DESIGNED BY: \_\_\_\_\_

CHECKED BY: \_\_\_\_\_

DATE: \_\_\_\_\_

BY: \_\_\_\_\_

REVISION: \_\_\_\_\_

FED. AD. No. \_\_\_\_\_

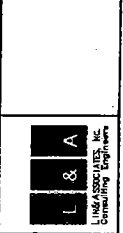
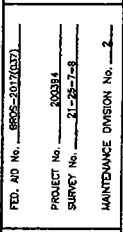
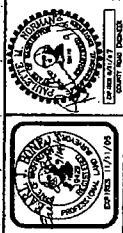
PROJECT No. \_\_\_\_\_

SHEET No. \_\_\_\_\_

MAINTENANCE DIVISION No. \_\_\_\_\_

DATE: \_\_\_\_\_

**KING COUNTY DEPT. OF TRANSPORTATION**  
 HAROLD HANCOCK, DIRECTOR  
**REALIGNED NE TOLT HILL RD.  
 TOLT #834A BRIDGE REPLACEMENT**  
 ESTABLISHMENT PLAN



**L & A**  
 ENGINEERING ASSOCIATES, INC.  
 Consulting Engineers

CALL 2 DAYS BEFORE 700-5655  
 1-800-424-5655  
 UNDERGROUND UTILITIES  
 UNIFORM SET

313-5576