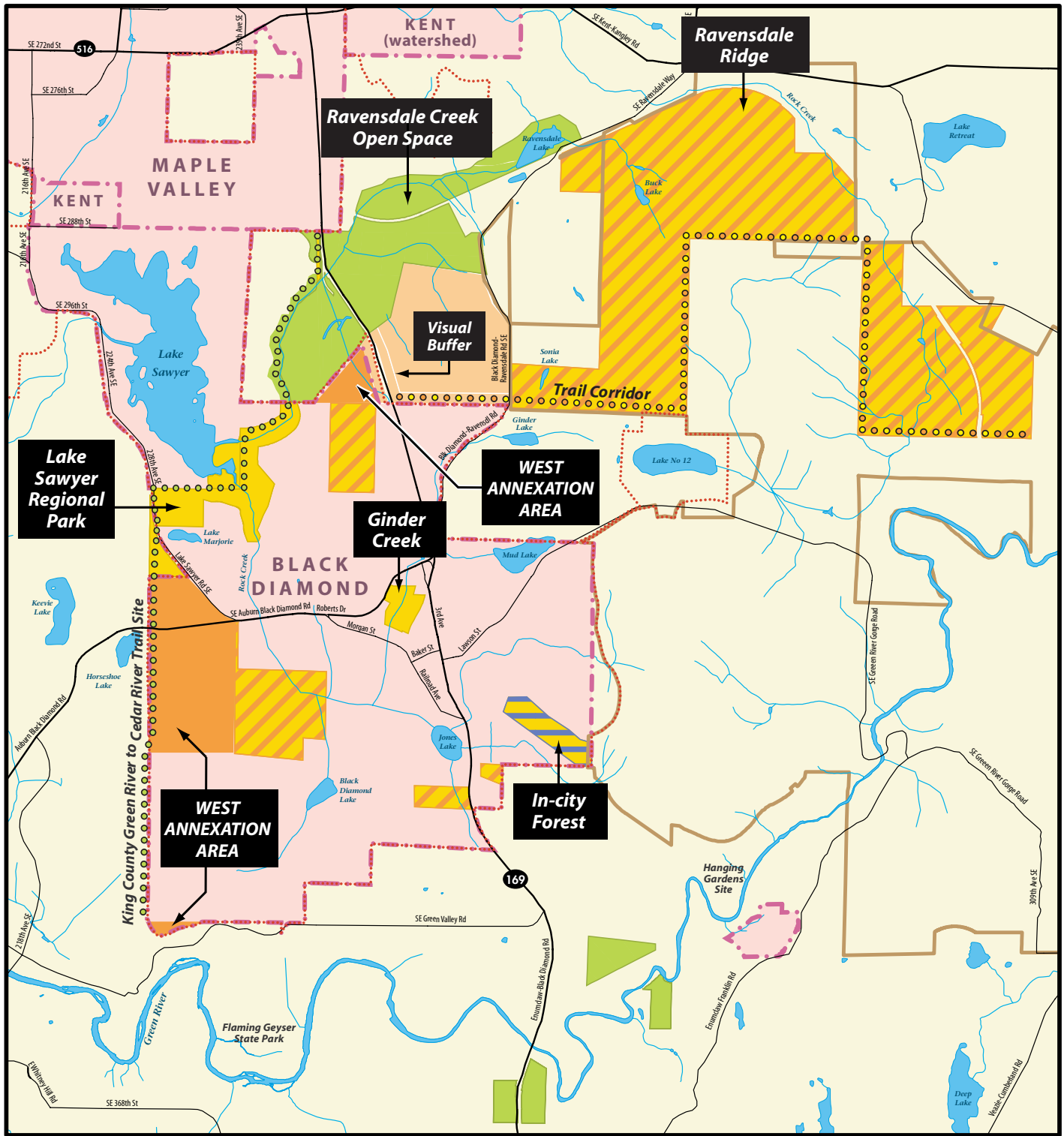


Post-Annexation

Black Diamond Area Open Space Protection Agreement



Post-Annexation Ownership

- King County Open Space
- Black Diamond
- Plum Creek
- Other
- Black Diamond/Plum Creek
- Black Diamond/Other
- Plum Creek—in Easement
- Trail—Plum Cr./Black Diamond
- Trail—King County

- Lake
- Incorporated Area
- Urban Growth Area Line
- Forest Production District Boundary
- Streams
- Road

Data Sources:
 Standard King County datasets: lakes, rivers/streams, urban growth area line, forest production district.
 Custom King County GIS Center datasets: in-city forest, annexation areas, King County open space, trails.
 ES&M Consulting Engineers, LLC (2005): In-City Open Space/Forest, Ginder Cr. Open Space, Section 2 Visual Buffer.

Note:
 The information included on this map has been compiled by King County staff from a variety of sources and is subject to change without notice. King County makes no representations or warranties, express or implied, as to accuracy, completeness, timeliness, or rights to the use of such information. King County shall not be liable for any general, special, indirect, incidental, or consequential damages including, but not limited to, lost revenues or lost profits resulting from the use or misuse of the information contained on this map. Any sale of this map or information on this map is prohibited except by written permission of King County.

Produced by:
 DNRP GIS and WLRD Visual Communications and Web Unit

Map File:
 WLRNT7/Cart/Finished/...Council/0508_BDOSAMapPOST3.ai LPRP

GIS Data Files (WLRD GIS Archives):
 DNRP1/Projects/WLRD/05065

