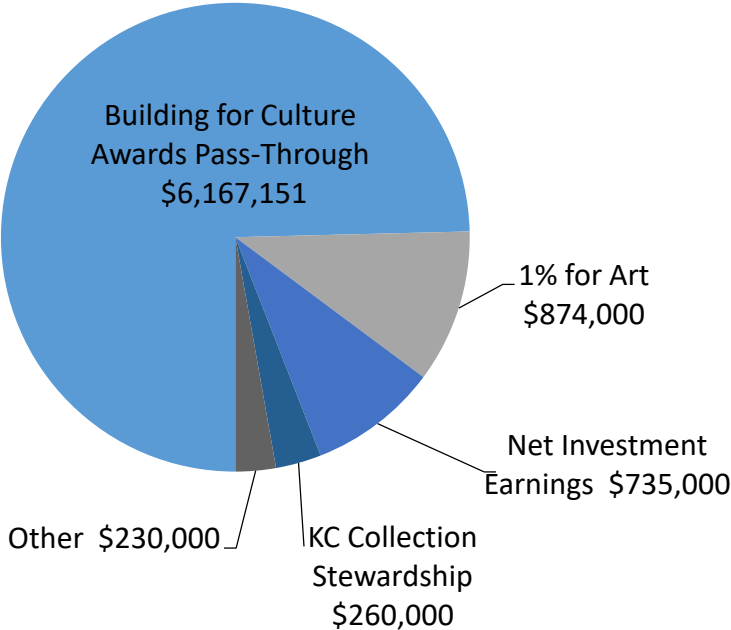




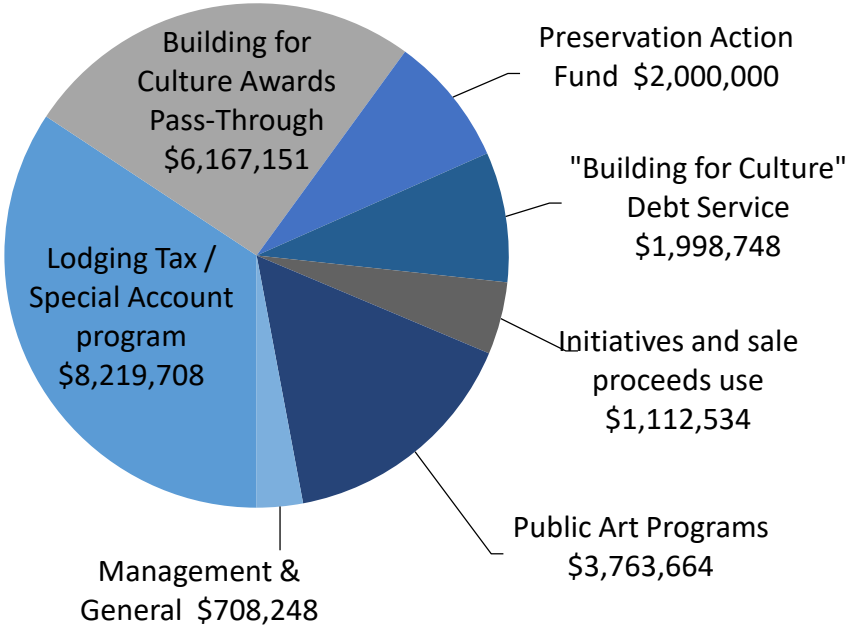
Advancing Community through Arts, Heritage, Preservation and Public Art

2018 Budget

2018 Revenues / Sources of Funds
Total \$8,266,151

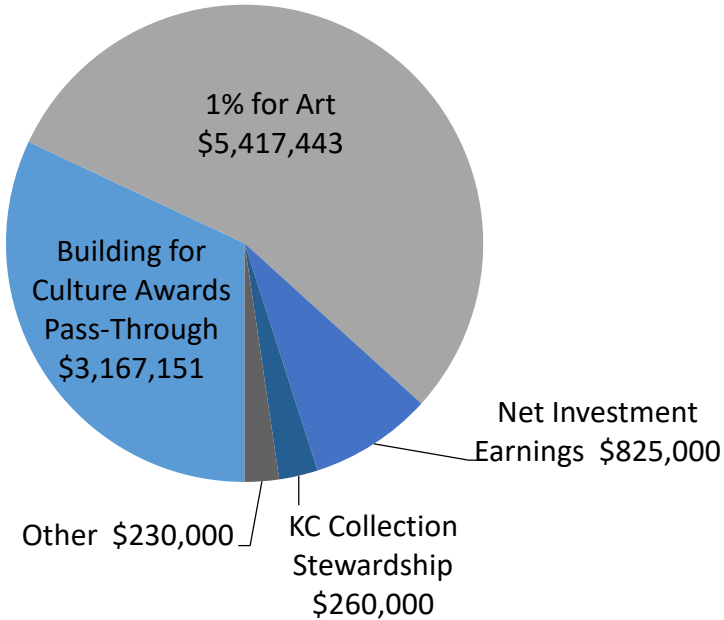


2018 Expenditures / Uses of Funds
Total \$23,970,052

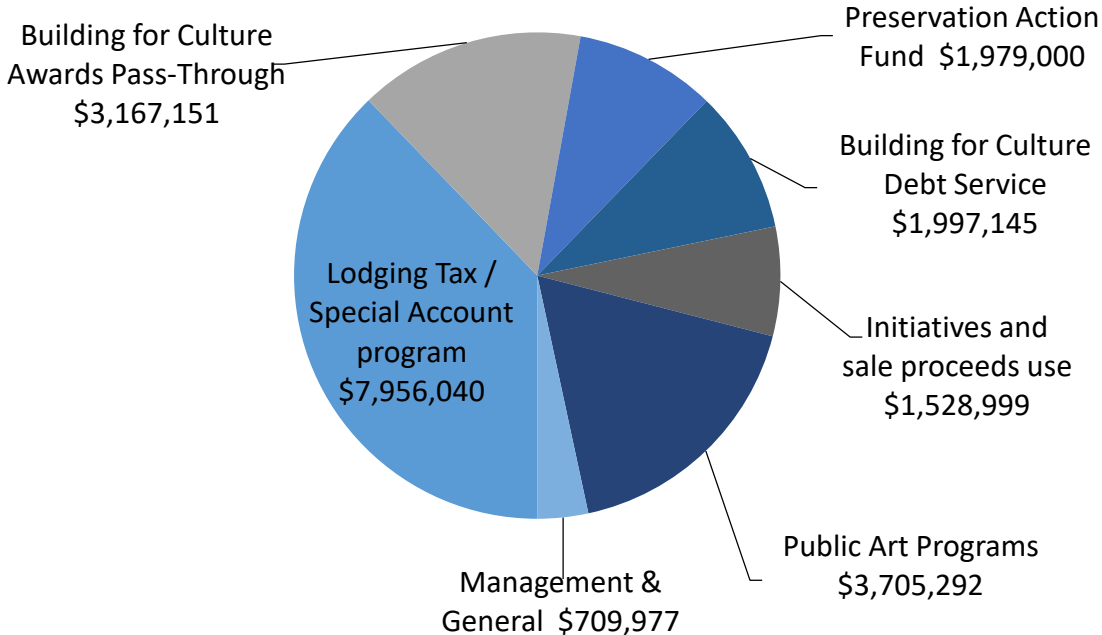


2019 Budget

2019 Revenues / Sources of Funds Total \$9,899,594



2019 Expenditures / Uses of Funds Total \$21,043,604



2018 Activities



- March** Arts, Heritage, Pres Projects
- May** Landmarks Capital, Equipment
- June** Collections Care
- July - Oct** Site Specific LAA/Artist Partners
- Sept 26** Storefront Media Gallery
- Oct 17** Sustained Support
- Nov 14** Cultural Facilities
- Nov 28** Arc Artist Fellowship
- Jan 2019** 4Culture Gallery

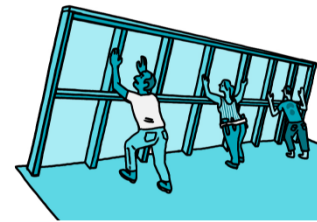
- Ongoing** Emergency/Unforeseen Capital
- Ongoing** Open 4Culture

Increased Accessibility & Customer Service



4CULTURE

provides **funding** and **support** for the **cultural work** that makes King County vibrant



Apply for a Cultural Facilities Grant
Applications are due November 14.



October at Gallery 4Culture: Haein Kang
Illusion is an instrument powered by alpha brain waves.



Sustained Support Grants are Open
Keep the lights on with this reliable, unrestricted funding.

ARTS FUELING CREATIVITY

LOOKING FOR GRANTS?



ACCESSIBILITY

At 4Culture, we strive to ensure that everyone has access to all our activities, services, and content. If you anticipate or know you may experience a barrier to your participation, or if you need an accommodation or would like to request assistance to access any of our activities, please contact us at hello@4culture.org, 206-296-7580, TTY 711, or reach out to a specific staff member.

4Culture Building

4Culture is located in a two-story, historic building in Seattle's Pioneer Square neighborhood. We are located one block south of the King County Courthouse and on the same block as the Tachino Kaplan Artist Loft. Our primary entrance is located on Prefontaine Place South, which does not offer parking, but access vehicles may drop off and pick-up within 25 feet of our front door. We are a [3BB](#) site.

Doors And Hallways

All of our hallways and doorways—with the exception of our upstairs bathroom—are at least 32 inches wide and ADA compliant. Some staff work spaces whose desks are located are less than 32 inches. All doors open manually; our front door and bathroom doors can be pushed open, while the doors to our three conference rooms hang on tracks and can be pulled open. Our front door, located at the corner of 3rd Avenue South and Prefontaine Place South, has a call box. During First Thursday Gallery Walk, a large sliding door leading straight into our Gallery is open continuously from 6:00 - 8:00 pm; please note that the main floor is especially crowded during these times.



APPLICATIONS

START A NEW APPLICATION

Before you begin, you must [create my 4Culture](#) for the grant or program for which you are applying. Already worked on an application? Don't start a new one. [Return to your draft](#).

• [Seeking Arts Budget Priorities funding](#) - Deadline + Open

CONTINUE A DRAFT APPLICATION

Applications listed below have **not been submitted** to 4Culture for review. Once you have submitted your application, you will no longer be able to make changes.

Action	Application	Year	Amount	Last Saved
View Draft	1st-17	1912	\$0	11/6/2017
View Draft	1st-18 5th	1912	\$2,500	1/5/2017
View Draft	1st-17	1913	\$0	6/26/2017

[Main Menu](#)

Over the past year:

100+

1,398 Applications submitted

945 Contracts created

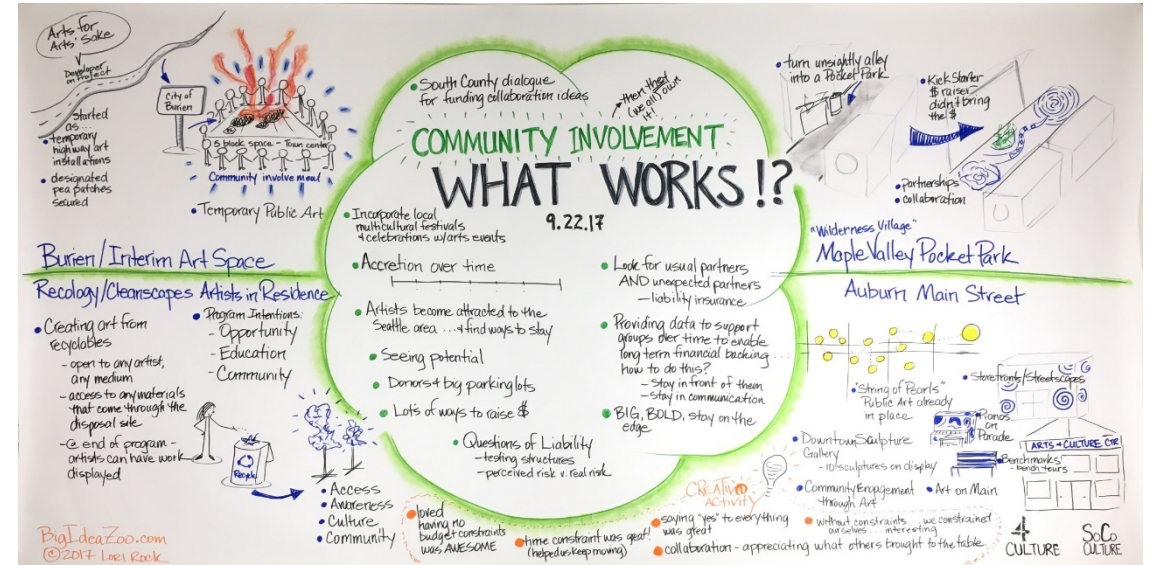
1,174 Payments processed

Winner of

2017 NW Marketing Award
for Responsive Design

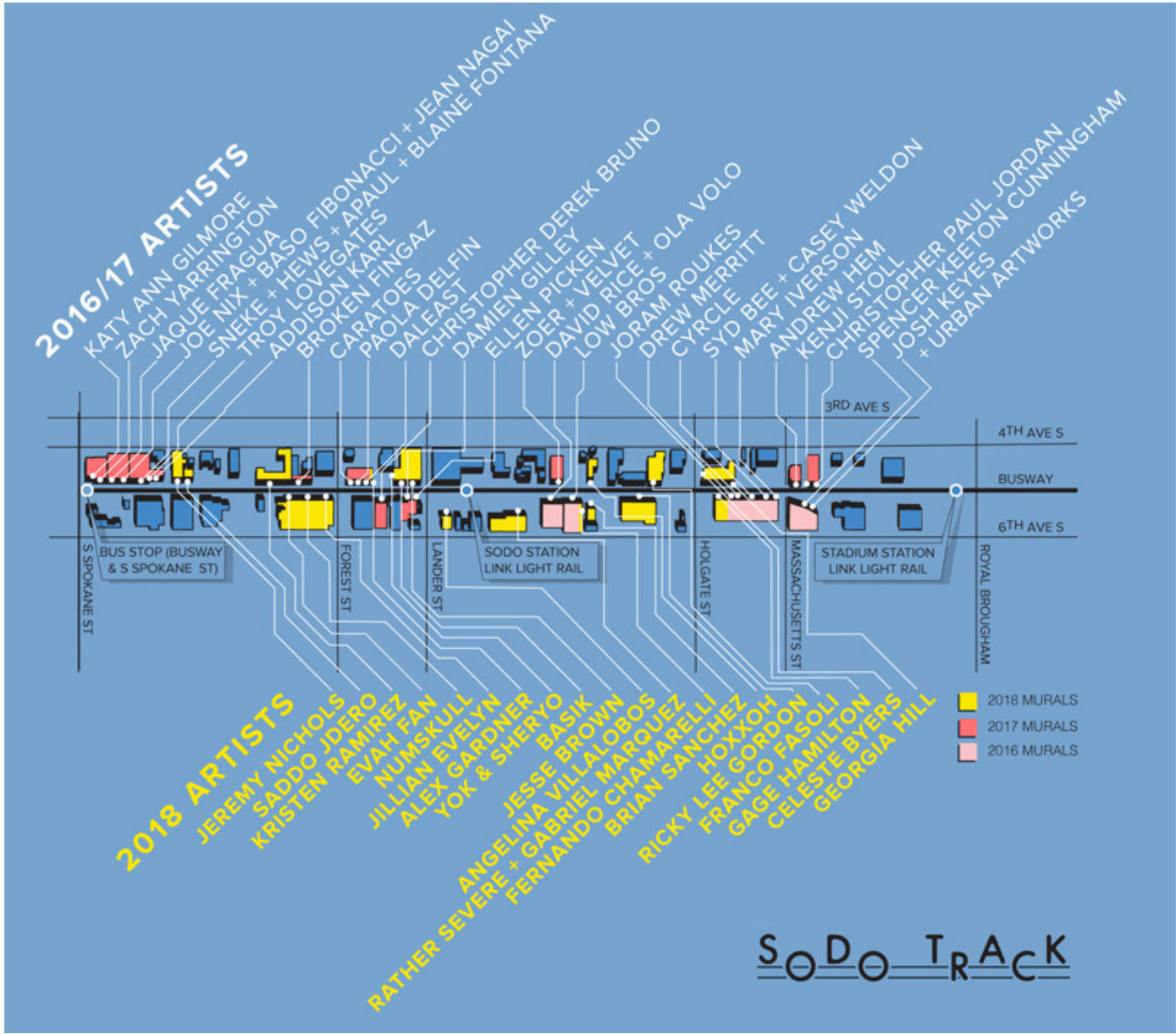
Public Art

Factoria Recycling and Transfer Station Al Price Still Spinning



Public Art

SODO TRACK

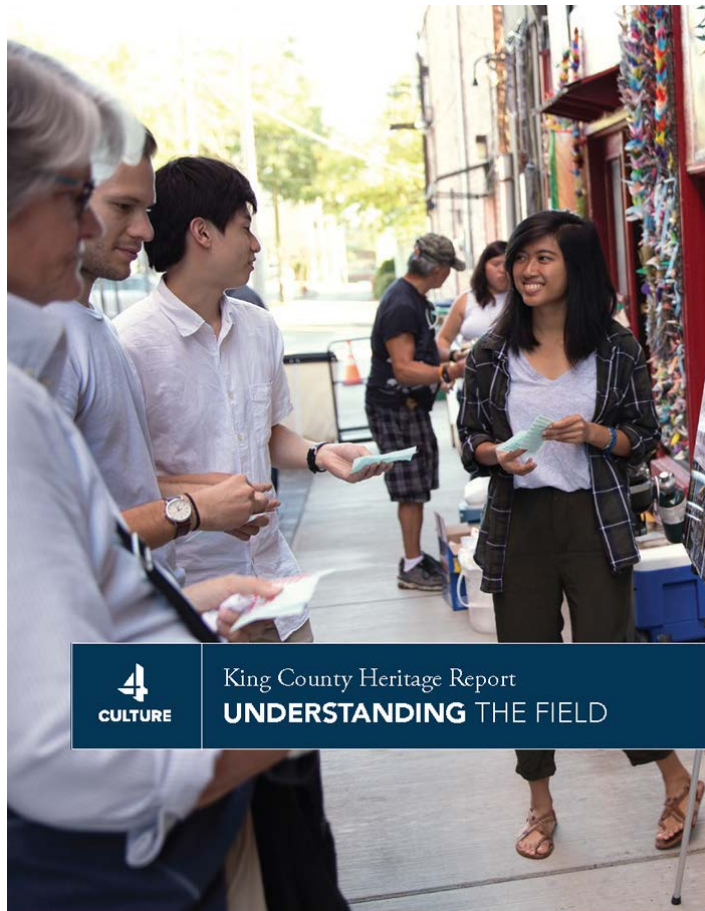


Arts

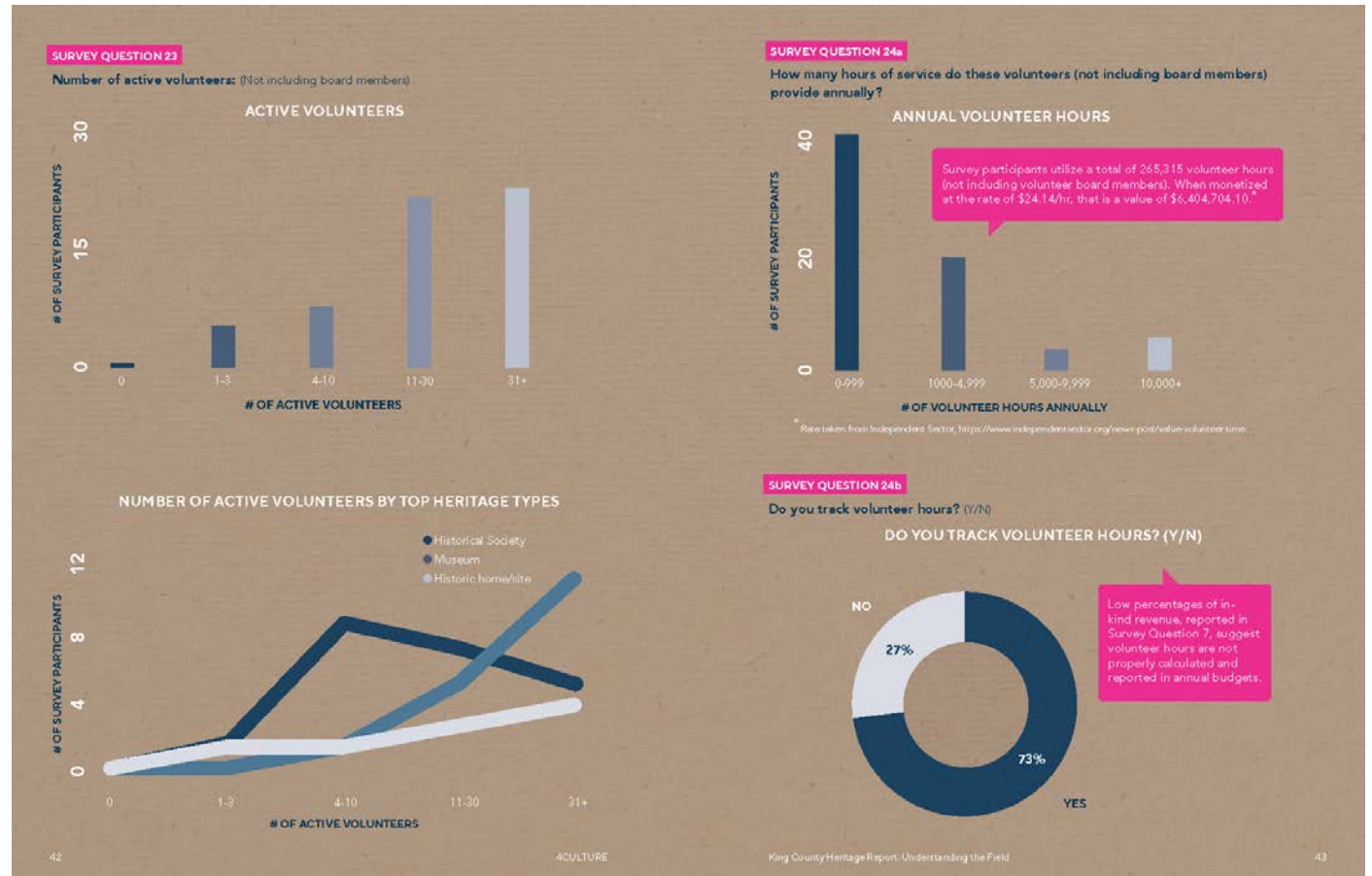
Partnerships



Heritage Report from the Field




 King County Heritage Report
UNDERSTANDING THE FIELD



Preservation

Beyond Integrity – The People's Wall



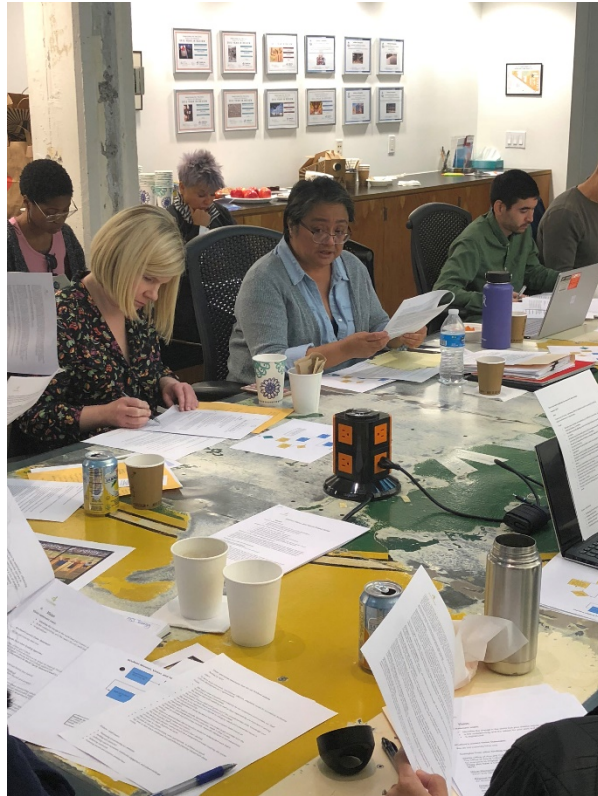
Building for Culture

Update on Projects



Sea Mar Museum of Chicano/a Latino/a Culture

Diversity, Equity and Inclusion at 4Culture



Internal Equity: Transforming How We Work

External Equity: What Does Serving All of King County Look Like?

Creative Justice

Year 3



Community 4Culture



Garinagu Houngua

Edna Daigre, Ewajo Dance Workshop

King County Cultural Health Study

- Aggregating existing data on the 39 cities which correlate to cultural health
- Conducting listening session in each of the 39 cities
- Creating a final report that will galvanize partnerships



4Culture's Vision for the Future

- Better understand who we serve and who we can serve moving forward.
- Focus the allocation of resources, time, and energy to individuals, organizations, and systems aligned with King County Council and 4Culture strategic goals.
- Forge partnerships that increase access, representation, and inclusion in the arts, preservation, heritage and public art throughout the county.

Goals

- Complete a thorough review of 4Culture's operations, practices, and processes through an equity and social justice lens.
- Gain community stakeholder input, through listening sessions, which include the general public and the voices of underrepresented communities, regarding 4Culture's operations, practices, and processes.
- Compare and contrast 4Culture's operations, practices, and processes to other funding organizations around the country.
- Provide insights and recommendations to the King County Council, via a Final Report, to improve accessibility to both patrons and practitioners of arts, cultural, heritage and historic preservation programming countywide.

Timeline

Oct. 29, 2018 | 1st meeting Orientation, Briefing Binder overview, Project Consultant selection.

November 2018 | 2nd meeting Listening Session.

December 2018 | 3rd meeting Listening Session.

January 2019 | 4th meeting Listening Session.

February 2019 Task Force submits final report to KCC by February 1, 2019.

Task Force

Task Force Members

Tara Beach

Lawrence Ellis

Marie McCaffrey

Ronda Billerbeck

Dwight Gee

Jennifer Meisner

Jeanne Burbidge

Scott Gray

Dominica Meyers

Carolyn Busch

Shannon Halberstadt

Laura Reynolds

Brian J. Carter

Mari Horita

Julianna Ross

Manny Cawaling

Janelle Johnson

Latha Sambamurti

Cassie Chin

Kji Kelly

Matias Valenzuela

Patricia Cosgrove

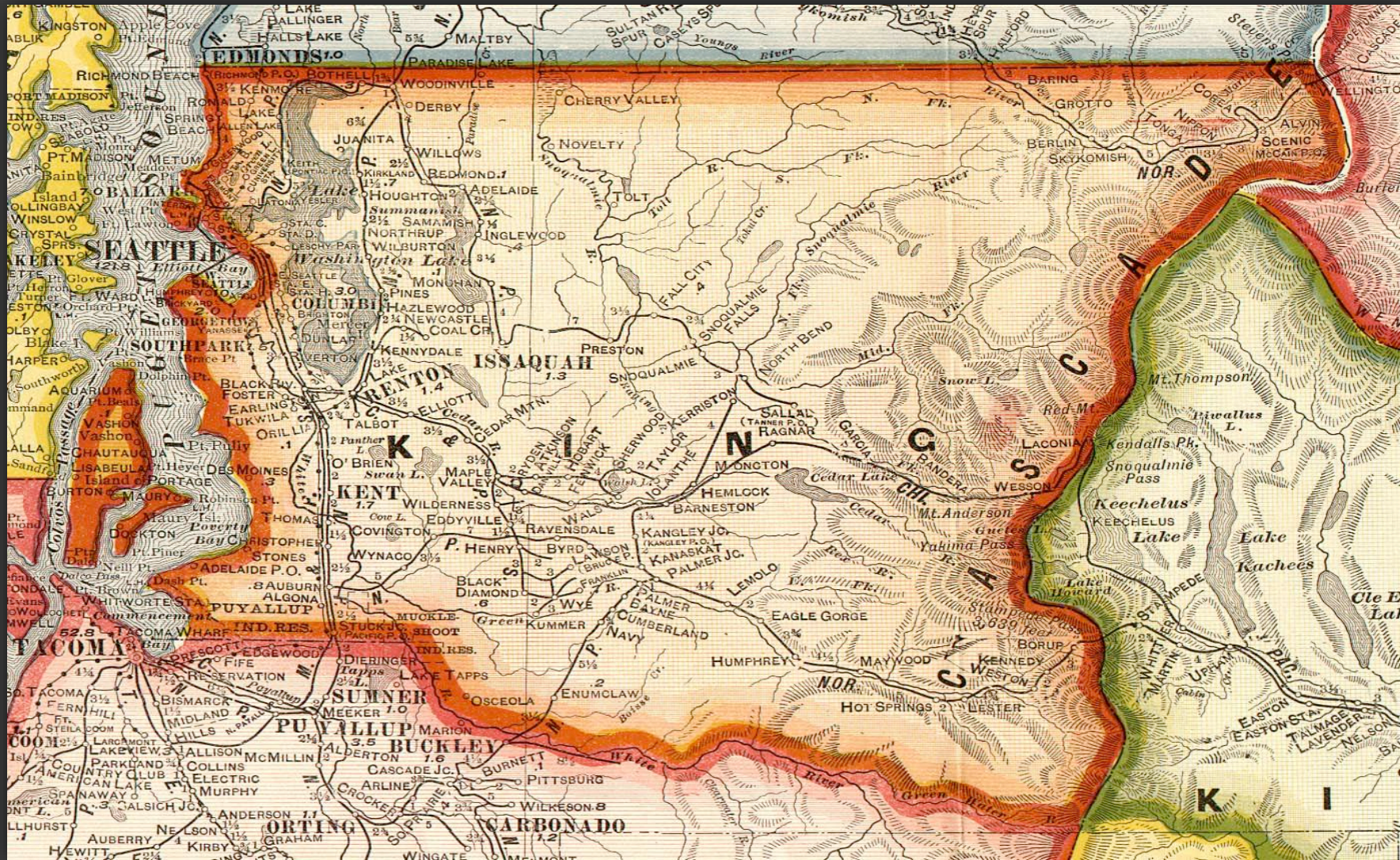
Josef Krebs

Sharon Williams

Kelly Dylla

Tim Lennon

Julie Zeigler













FARES	
Vehicle & Driver (14' to 16')	\$11.00
Vehicle & Reduced Fare Driver (Child or 65+, Disabled)	\$6.00
Vehicle Toll Surcharge (Over 14' Under 20')	\$6.00
Passenger	\$6.00
Reduced Youth Fare Passenger (6-12)	\$3.00
Reduced Fare Passenger (Child or 65+, Disabled)	\$3.00

Portable gas tanks must be declared at toll booth for visual inspection. Failure to comply may result in denial of passage.

Terminal & Vehicle public areas subject to video monitoring.

SOUTHWORTH ONLY



BLACK DIAMOND
HISTORICAL MUSEUM

←ENTRANCE

WELCOME TO THE
LEONARD MANNERS
HONOR GARDENS
OF
THE MUSEUM

OPEN

BLACK DIAMOND
HISTORICAL MUSEUM







THANK YOU FOR YOUR ADVICE & GUIDANCE

