

# Committee of the Whole

**TJ Cosgrove**

*Division Director of Community  
Health Services, Public Health*

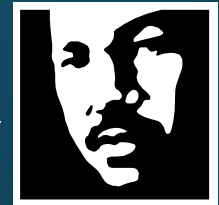
**Rachel Smith**

*Chief of Staff for Executive  
Dow Constantine*

**Public Health**  

---

**Seattle & King County**



# Shared Commitment to Mission Population



Health Services



Systems Transformation



Key Public Health Issues

# Public Health at Harborview



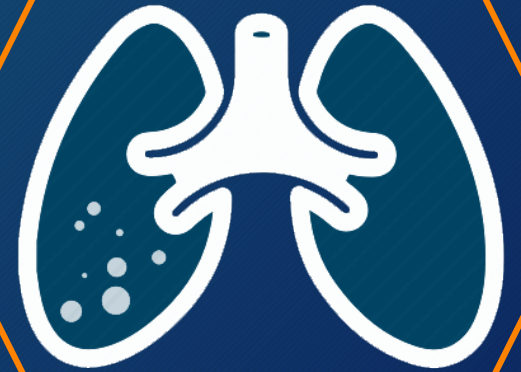
PUBLIC  
HEALTH  
LAB

STD  
CLINIC



MEDICAL  
EXAMINER'S  
OFFICE

TB  
CLINIC



# \$5 Million Allocation to Public Health

Support direct services to mission population



# Partnerships

## Jail Health Telemedicine

Provides better health care access to individuals who are detained.

