



2025 Annual Report Briefing Topics

1. The Core of 4Culture
2. 2025 Highlights and Key Issues
3. What We've Learned and What's Ahead



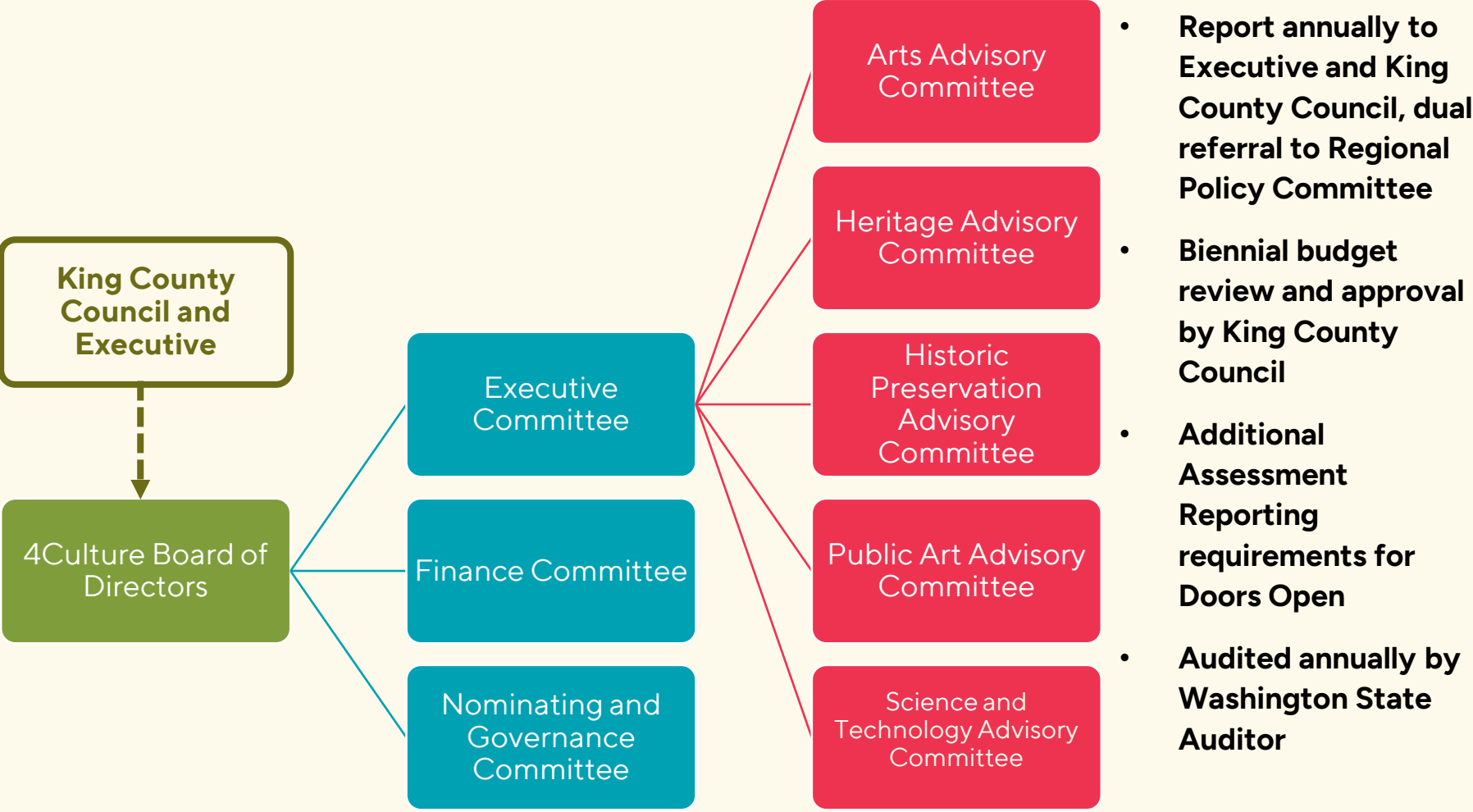
I trust

DOORS OPEN



enters here.

Accountability and Good Governance



2025 At-A-Glance

- \$94.7M in awarded funding
- 1,086 cultural organizations awarded; 345 individual artists awarded
- Doors Open – first year of full implementation
- 10 new grant programs
- ~12k jobs supported through 4Culture funding



Savoring Nepal, Culture Generation – Kent, 2025. Photo courtesy of Culture Generation.

Financial Snapshot

Financial Totals	2023	2024	2025
Total Revenues	\$21,180,481	\$92,603,440	\$124,841,718
Total Expenditures	\$16,124,769	\$21,628,970	\$81,510,687
Total Fund Balances	\$41,776,970	\$112,751,440	\$156,082,471

Total revenues and expenditures differ on an annual basis due to timing factors in the inflows and outflows of various programs' financial resources. More detailed financials are provided in the Annual Report itself.



Excitement

DOORS OPEN



enters here.

Arts: Auburn Theater

- Building for Equity Awardee
- New 300-seat theater in downtown Auburn
- Revitalization plan, activating vacant site
- Positive impacts to business and community



Rendering of Auburn Ave from SW Entrance, Opsis Architecture 2026.

Heritage: Fairs and Festivals

- Día de los Muertos Celebration – City of Shoreline
- Snoqualmie Valley International Block Party – SnoValley Regional Chamber of Commerce
- Honoring Juneteenth – Eastside for All
- Irish Week – Irish Heritage Club



Block Party Dancers. Photo by Lucid Layout Photography, 2025.

Preservation: EPHS Museum

- Enumclaw Plateau Historical Society, Landmarks Capital Award
- Museum Renovation
- 116-year-old Masonic Lodge
- Changes to have programming space



Photo of Historic Masonic Lodge, 1909 and the building in 2025 with the deck being replaced. Photo courtesy of Enumclaw Plateau Historical Society, 2025.



Science and Technology: SUMM

- New to 4Culture; multiple awards in 2025
- SUMM @ Kent Station offers free admission to museum
- Programming focused in South King County schools and libraries



Seattle Universal Math Museum demonstration. Photo courtesy of SUMM.

Public Art: Portable Works Collection

- 2,000+ works in King County Collection
- Public Art staff work to store, install, and repair collection
- 170 installations in King County's public spaces in 2025
- Impacting the public's experience with institutional space



4Culture staff install Margaret Tomkins' Source in the Chinook Building, 2025.

Public Art: Portable Works Collection

- Catalog of portable, temporary, and permanent artwork is online
- Public can learn about artist, artwork, and space

4
CULTURE

Funding + Artist Calls Resources **Public Art** Community Impact About 4Culture Your Account

BROWSE PUBLIC ART

4Culture produces a wide range of art to **connect, inspire, challenge, and enthrall**. Find your new favorite work below.

Search: title, artist, location or keyword

Camber
W. Scott Trimble
King County Regional Trails System

Topografía
Iván Carmona
Judge Patricia H. Clark Children and Family Justice Center

Birds of Paradise
Alfredo Arreguin
Judge Patricia H. Clark Children and Family Justice Center

Open Path
and Paul Sorey
Social Justice Center

Divided Sky, The Four Seasons, Wintry Sky
Maria Frank Abrams
Mercer Island Library

Focus on Time
Paul Horiuchi
King County Courthouse

Children's Touchstone with Eagles
James Washington
Bailey Gatzert Elementary School

Angles Out, Tangents, and Source
Margaret Tomkins
King County Courthouse



Resilience

DOORS OPEN



CULTURE

enters here.

Responsiveness

- Rolling grant program for emergency capital repairs and expenses
- Catastrophic flooding devastated residents and cultural organizations
- Climate change preparedness for the sector is an emerging issue



Flooded Native Plant Nursery at Oxbow Farm and Conservation Center, 2005.



Strength

enters here.

DOORS OPEN



CULTURE

Building Organizational Strength

- Doors Open funding connects organizations with consulting support
- Top services provided: financial and strategic planning, grant writing, fundraising development



Priority organization and consultant roster mixer, 2025.

Growing a Vibrant Cultural Sector

- 23% of Doors Open awardees were first time applicants to 4Culture
- \$3.3M to Science and Technology cultural education organizations
- \$2.46M invested in new and emerging organizations
- Supports for sustainable and accountable growth



Hobart-based group, Culture Tug. Photo courtesy of Culture Tug, 2025.



Community

enters here.

Accessible Cultural Experiences

- 1.76M people accessed free or reduced cost cultural programming
- Organizations using 'pay what you can' & sliding scale models
- Free admission to: Seattle Universal Math Museum @ Kent Station, Henry Art Gallery, Summer Asian ArtsFest



Youth in Focus Beginners Dark Room Summer Camp, 2025.

Serving Public School Students

- \$8.6M awarded; 173 awards
- 83% of programs are free or subsidized for schools and students
- Organizations are offering free summer break programming, field trips, and increasing teaching artists



School Field trip to KidsQuest Museum, 2025.

Learning and Looking Ahead

- Number and strength of cultural organizations is increasing
- Partnerships and mergers are valuable
- Preparing for climate change and extreme weather is critical
- We are learning from our evaluation and putting the data and feedback into action



AREA C Projects. *Water Log* (detail), 2025. Aluminum. King County Public Art Collection, Rainer Valley Wet Weather Storage, Seattle WA. Photo: joefreemanjunior.com

**Thank you
from
4Culture
Board of
Directors
and Staff!**

