

# 2023 Biennial Report: 2020 Strategic Climate Action Plan

TrEE Committee  
March 2024



King County

**CLIMATE ACTION**

Clean Future. Strong Communities.



# Executive Climate Office

- Established through the 2023-2024 biennial budget process.
- Director hired in July 2023, team now has 20 members including FTEs, TLTs, Fellows and Interns.
- Team members lead Climate Equity, Climate and Workforce, Climate Preparedness, GHG Reduction, Building Decarbonization, Electric Vehicle Planning, and Clean Energy program areas.



**Key objectives for 2024 include:** Implementation of the 2020 Strategic Climate Action Plan (SCAP), securing additional state and federal funding for climate, increased communication on climate successes and opportunities, coordination and alignment with community partners and stakeholders, development of the 2025-2030 SCAP.

# 2020 Strategic Climate Action Plan (SCAP)

- Long-range plan and 5-year roadmap for County climate action. King County's role is to implement, convene, support, and advocate/educate.
- Includes 242 priority actions in three sections covering county operations and countywide actions. With an additional 10 actions in our Green Jobs Strategy.
- Informs County policy frameworks (e.g., Comp Plan), strategic priorities, and budgeting.
- Drives action and accountability across County departments and with community partners.
- Biennial report progress update transmitted to Council in December 2023.



# Key Takeaways

- 70% (169 of 242 actions) of 2020 SCAP priority actions are on track to be completed by end of 2025.
- Governmental greenhouse gas emissions are down 30% from 2007 to 2022. Countywide per person emissions are down 7%, but overall countywide emissions have increased.
- King County staff are partnering with frontline communities to address the root causes and the symptoms of racial and social inequities.
- Green Jobs Strategy is well underway and has been recognized as a model for other municipalities across the country.
- Building stronger regional alignment for climate preparedness via County's first Wildfire Risk Reduction Strategy (2022) and forthcoming Extreme Heat Mitigation Strategy (2024), Wildfire Smoke Plan (2024)



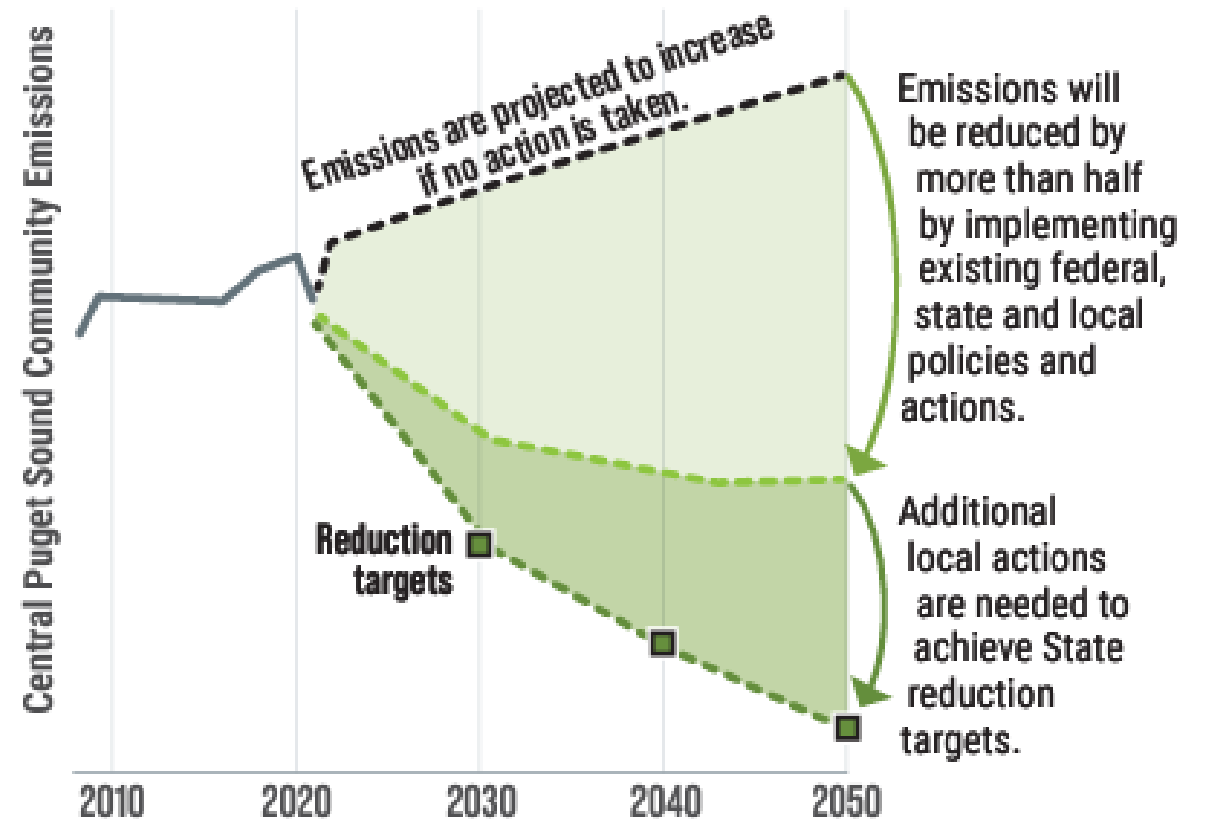
# Reducing GHG Emissions

## OVERARCHING GOAL

*Reduce countywide sources of GHG emissions compared to a 2007 baseline, by 25 percent by 2020, 50 percent by 2030, and 80 percent by 2050. Pursue additional goals and actions to sequester carbon and reduce emissions from consumption of good and services.*

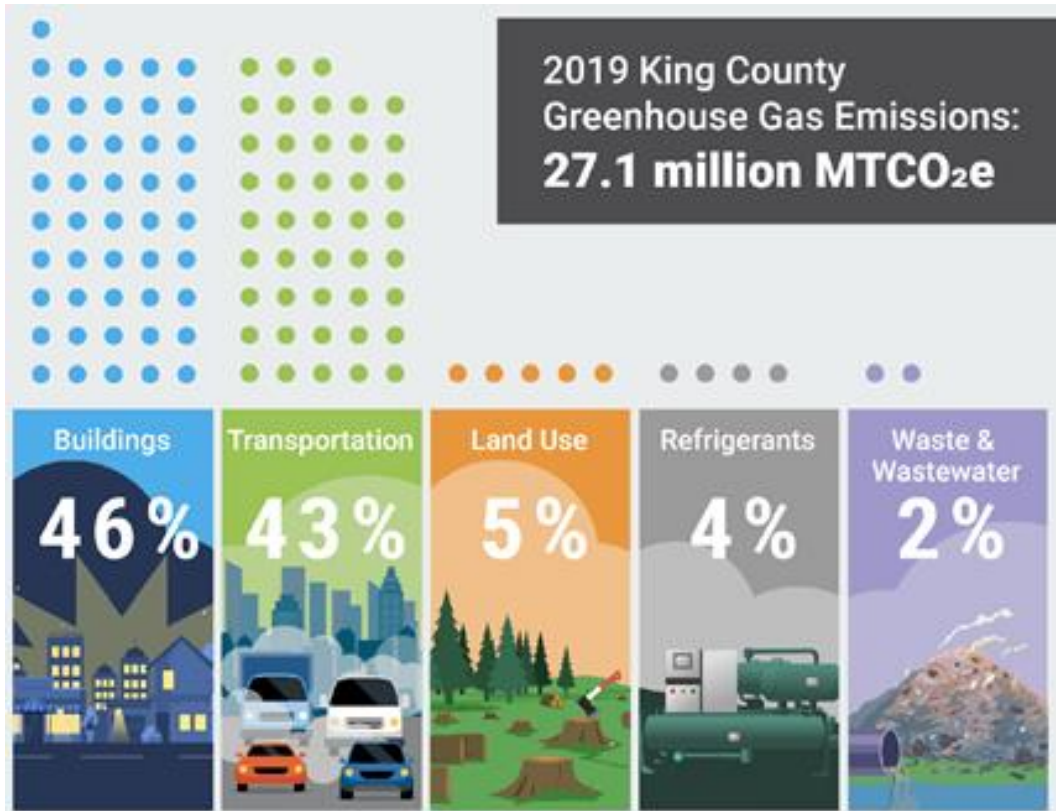
## THE FUTURE OF CENTRAL PUGET SOUND COMMUNITYWIDE EMISSIONS

(total emissions from residents, businesses, governments)



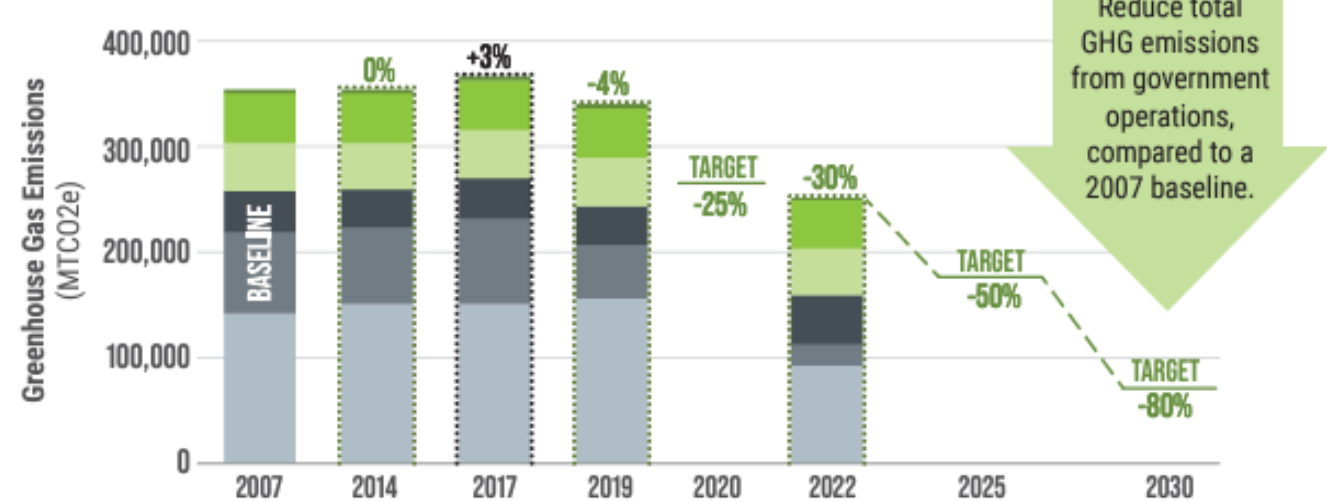
# King County GHG Emissions

## Community Scale



## Government Operational Emissions

### KING COUNTY GOVERNMENT OPERATIONAL EMISSIONS



# Reducing GHG Emissions – Section Highlights

## Greenhouse Gas Targets and Policy



- **State-level policy development and rulemaking**
- **Integrating aircraft emissions and consumption into targets**

## Transportation and Land Use



- **Reduce countywide car trips** (transit; land use; vehicle usage pricing)
- **Fleet electrification**

## Building and Facilities Energy



- **Building Decarbonization** – phase out of fossil fuels in County, residential and commercial buildings
- **Renewable energy production**

## Green Building



- **Strengthen building and energy codes**
- **Implement the highest green building standards in County projects**

## Consumption and Materials Management



- **Zero waste of resources and zero edible food waste (Re+)**
- **Use low GHG emissions materials in County construction projects**

## Forests and Agriculture



- **Land Conservation Initiative (LCI)**
- **30-year Forest Plan**
- **Plant, Prepare, Protect 3 Million Trees**
- **Forest and Farmland Stewardship Plans**

# 64% of Priority Actions On Track

## Section I Reducing Greenhouse Gas Emissions

Greenhouse Gas  
Targets and  
Policy



Green  
Building



Transportation  
and Land Use



Consumption  
and Materials  
Management



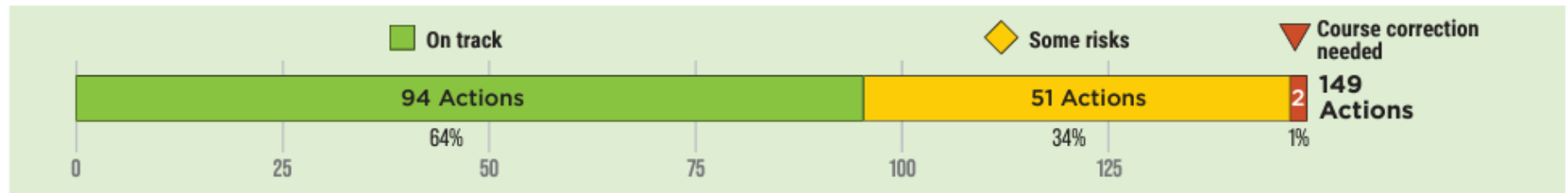
Building and  
Facilities  
Energy



Forests and  
Agriculture



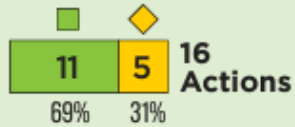
GHG Overall



By GHG Focus Area



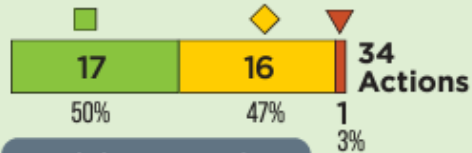
Greenhouse Gas  
Targets & Policy



Detailed progress updates



Transportation  
& Land Use



Detailed progress updates



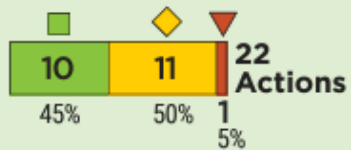
Building & Facility  
Energy Use



Detailed progress updates



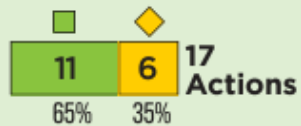
Green  
Building



Detailed progress updates



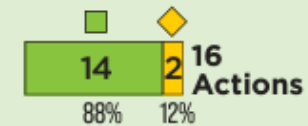
Consumption &  
Materials Management



Detailed progress updates



Forests &  
Agriculture

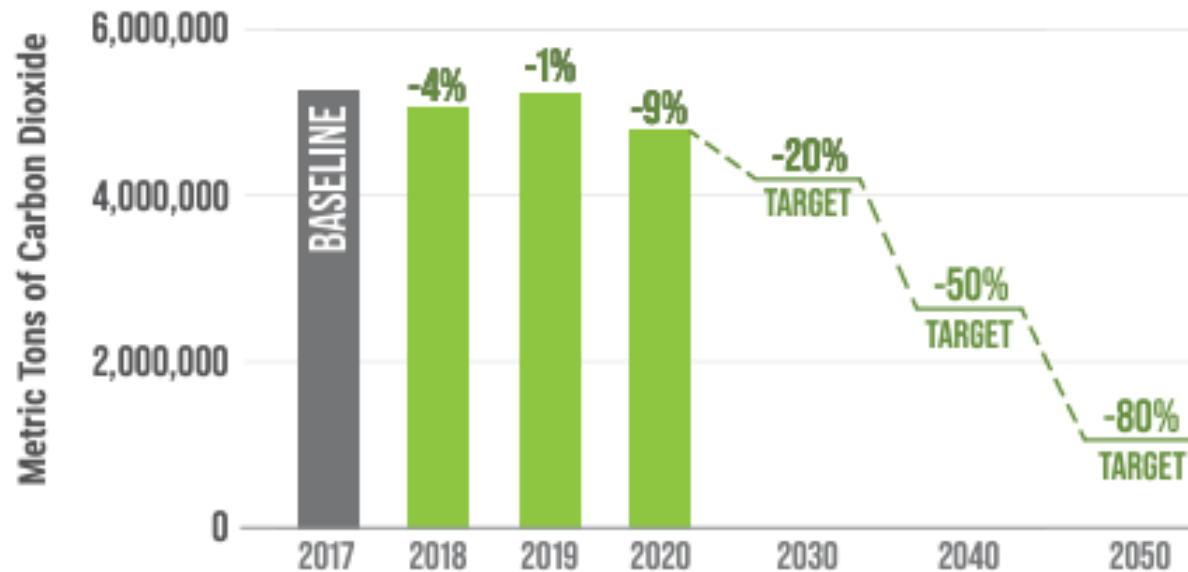


Detailed progress updates



# Successes & Opportunities

## FOSSIL FUEL USE IN BUILDINGS



- 2020 SCAP identified specific GHG pathways “wedges” for achieving the GHG reduction targets.
- GHG pathways basis for 36 quantitative long-term performance measures to track progress .
- Priority actions 5-year roadmap of activities to advance progress on performance measures and GHG pathways.
- King County Energize! Program example of priority action to contribute to reduction of fossil fuel use in buildings.
- 2024/25 workplans and 2025 SCAP development informed by “Appendix B: 2023 Analysis of the Effectiveness of County’s Strategies and Actions in Reducing GHG Emissions.”

# Sustainable & Resilient Frontline Communities

## VISION

*Frontline communities are centered in developing climate solutions and have the knowledge, skills, resources, capacity, and social political capital to equitably adapt, lead, and thrive in a changing climate.*



- Community-driven vision of success.
- Connects risk of climate impacts to root causes.
- Outlines scalable actions for advancing climate equity across focus areas.
- Establishes cross-cutting strategies for equitable action.

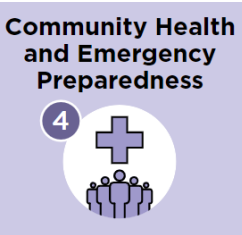
# Climate Equity – Section Highlights



- 2024 Comp Plan Update
- ESJ Strategic Plan Refresh
- Task Force Partnership and Intake Process development



- Community Climate Resilience [Grant](#)
- Climate Justice Learning Series



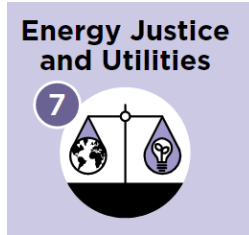
- [Breathe Better At Home](#)
- Environmental Health Disparities embedded in KC Determinants of Equity [Tool](#)



- Local Food Initiative Refresh
- Land Conservation Initiative sites acquisition
- South Seattle Community Food [Hub](#)



- Skyway & Highline Anti-Displacement [Report](#)
- Equitable Development Initiative



- FUSE Executive Fellow research and recommendations for [utilities](#) cost-burden relief

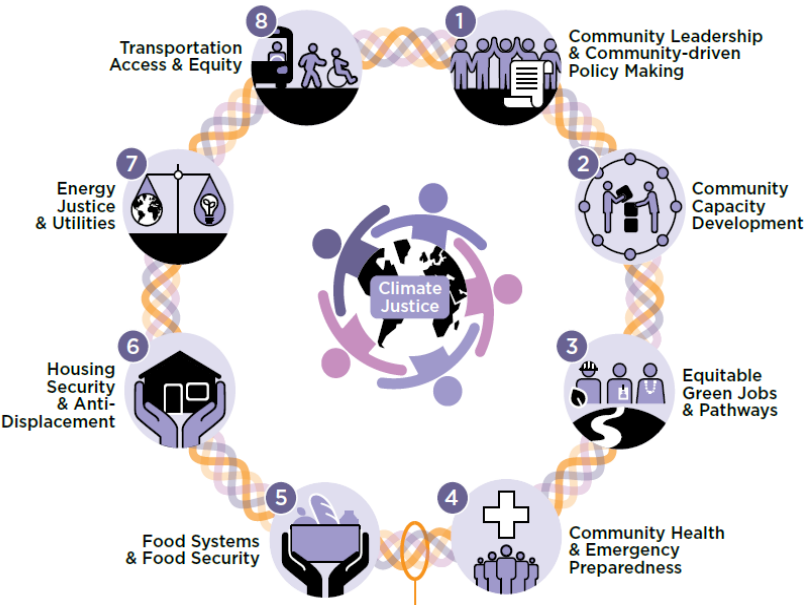


- [Metro Mobility Framework](#) adopted in 2021-2031 Metro Strategic Plan

## Update on [Green Jobs Strategy](#)

- King County Industry Sector Analysis
- Green Jobs Strategy
- Green Building Scorecard Credits
- NextGen Climate Internship Program
- JUMPSTART Training Program
- Green Jobs, Green Futures Summit
- Application Clinics

# 81% of Priority Actions On Track



## SRFC Overall



## By SRFC Focus Area





# Successes & Opportunities

- Climate Equity Capital Pool Projects, 2021 \$20M bond-funded, supporting capital projects centering priority populations.
- Community Climate Resilience Grant Program, invests in community-led projects addressing SRFC focus areas and other priorities connected to climate change. \$150,000 in 2024.
- Partnering with DCHS and PHSKC to articulate climate, health, and housing connections with frontline communities in 2024; scaling needed.

# Preparing for Climate Change

## **VISION**

King County creates, supports, and implements policies and actions that reduce climate change vulnerabilities equitably and increase the resilience of King County communities, natural systems and the built environment.

62 actions focused on reducing climate risks and building capacity for sustained work on climate preparedness.

New to climate preparedness for the 2020 SCAP:

- Overarching vision of success,
- Strategic framework to focus and organize preparedness work,
- Performance measurement framework for tracking progress,
- Expanded set of preparedness activities.

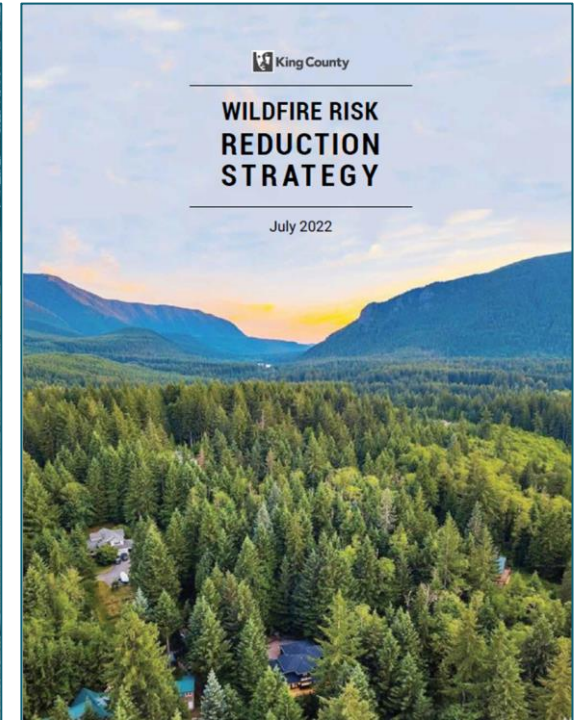
# Preparing for Climate Change – Section Highlights



**Equitably reduce  
climate risks**



**Operationalize  
climate preparedness**

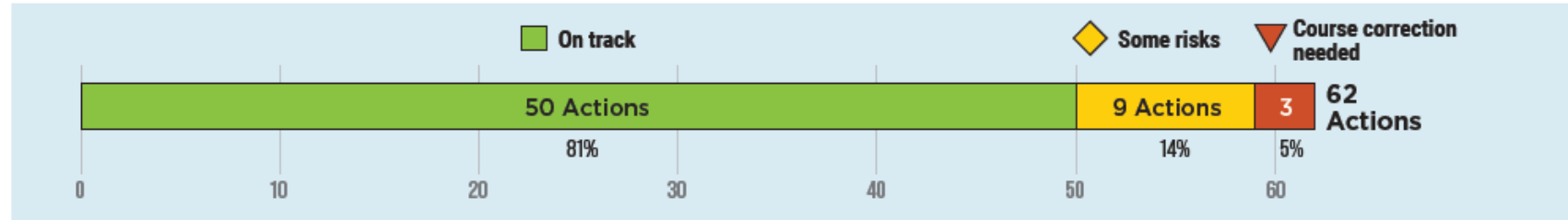


**Accelerate  
regional preparedness**

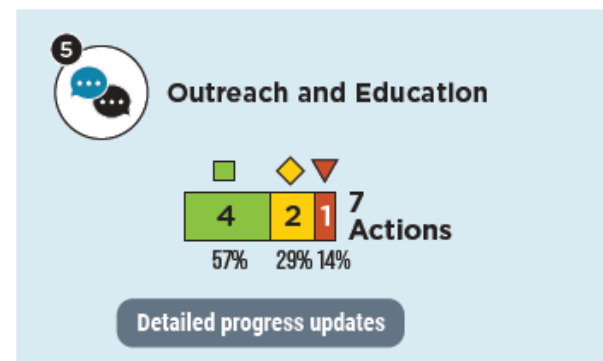
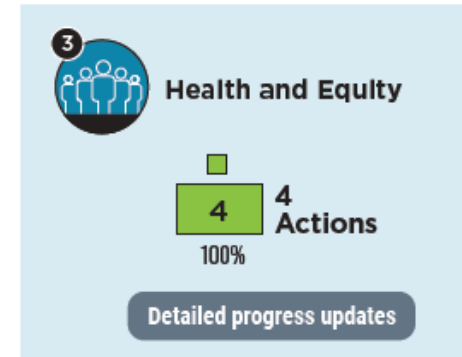
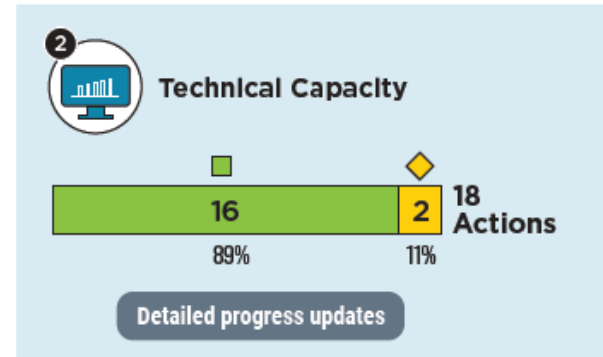
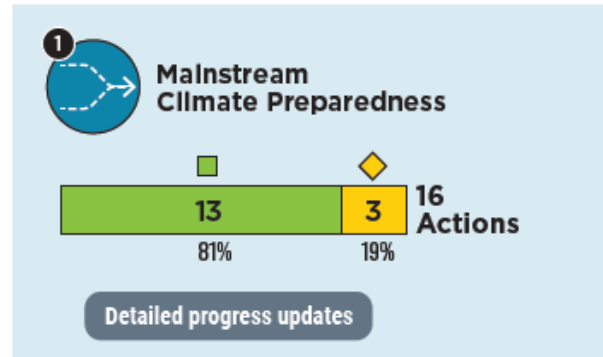
# 81% of Priority Actions On Track

## PRIORITY ACTION DASHBOARD

### Preparing for Climate Change Overall



### Preparing for Climate Change by Focus Area





# Successes & Opportunities

- 2020 county-wide heat island mapping & increased planning for extreme heat
- New investments in Public Health staff capacity on climate change + new dashboard for tracking new climate change health impacts
- Wildfire Risk Reduction Strategy + added staff capacity for wildfire risk reduction
- Piloting integration of climate change into wastewater, flood management projects; included in design of new culverts for fish passage
- Opportunities: building better internal staff capacity for climate preparedness; stronger regional alignment in climate preparedness priorities; implementation support for strategies

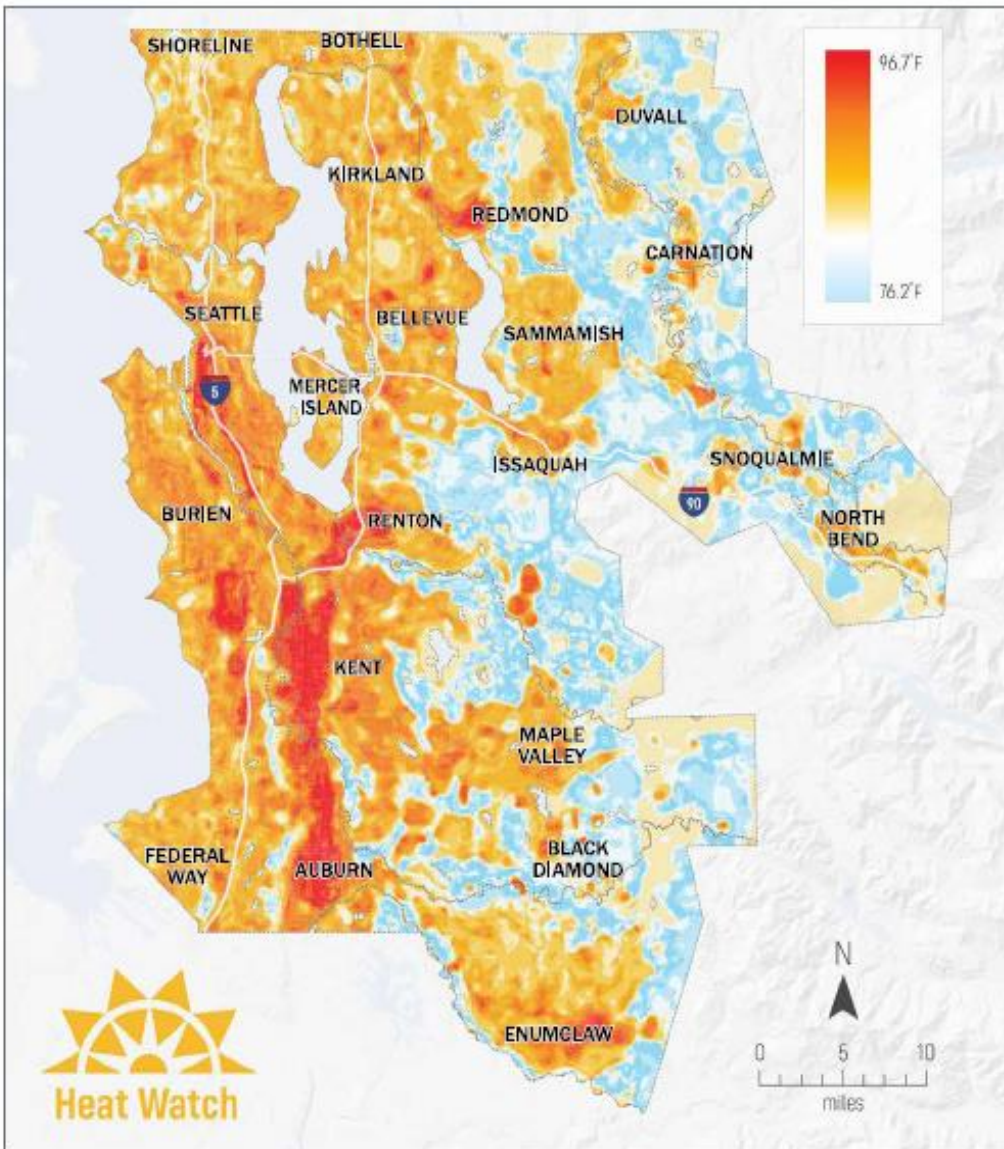


Figure Prep 2. Mapping heat islands in King County. More urbanized areas can be as much as 20 degrees Fahrenheit hotter than less urbanized areas, due in large part to differences in land use and land cover. [Learn more.](#)

# Measuring Performance

## Section I Reducing Greenhouse Gas Emissions

36 performance measures including covering:

- WA Energy Code Improvements
- Energy and Fossil Fuel Use at County Facilities
- Transfer Station Recycling
- GHG emissions of County fleet
- Acres of County owned forest and natural areas restored

8 of 19 Countywide measures are on track to meet targets. Three are approaching the target.

8 out of 17 Government Operations measures are on track to meet targets. Six are approaching the target.

## Section II Sustainable & Resilient Frontline Communities

15 performance targets and measures covering:

- Frontline community leadership and capacity building on climate action
- Staff capacity building on climate equity
- Community health & emergency preparedness progress
- Food, housing, energy and utilities, and transportation access and investments

Tracking of progress on targets will begin in 2024.

## Section III Preparing for Climate Change

Nine performance measures covering:

- mainstreaming climate action,
- building technical capacity,
- prioritizing health and equity,
- community and organizational partnerships,
- outreach and engagement

Six of nine measures on track to meet performance measure targets. Remaining three measures are approaching the target.

# Looking Ahead

- Seeking state and federal climate funding in partnership with local and regional collaborators to implement priority climate actions.
- Potential repeal of Climate Commitment Act would jeopardize our ability to deliver programs and meet goals.
- Developing proposals for the 2025 budget that help us meet our climate goals efficiently and effectively.
- Kicking off 2025-2030 SCAP development soon.
- Building community capacity on climate change through community investments and education/training opportunities.

# Thank You!

**Marissa Aho, AICP**

*Director, Executive Climate Office*  
[maaho@kingcounty.gov](mailto:maaho@kingcounty.gov)

**Carrie Lee**

*GHG Emissions Program Manager*  
*Reducing GHG Section Lead*  
[Carrie.lee@kingcounty.gov](mailto:Carrie.lee@kingcounty.gov)

**Vicky Raya**

*Climate Equity Program Manager*  
*SRFC Section Lead*  
[vraya@kingcounty.gov](mailto:vraya@kingcounty.gov)

**Lara Whitely Binder**

*Climate Preparedness Program Manager*  
*Preparing for Climate Change Section Lead*  
[lwbinder@kingcounty.gov](mailto:lwbinder@kingcounty.gov)

***Learn more about our climate work:***

[www.kingcounty.gov/climate](http://www.kingcounty.gov/climate)