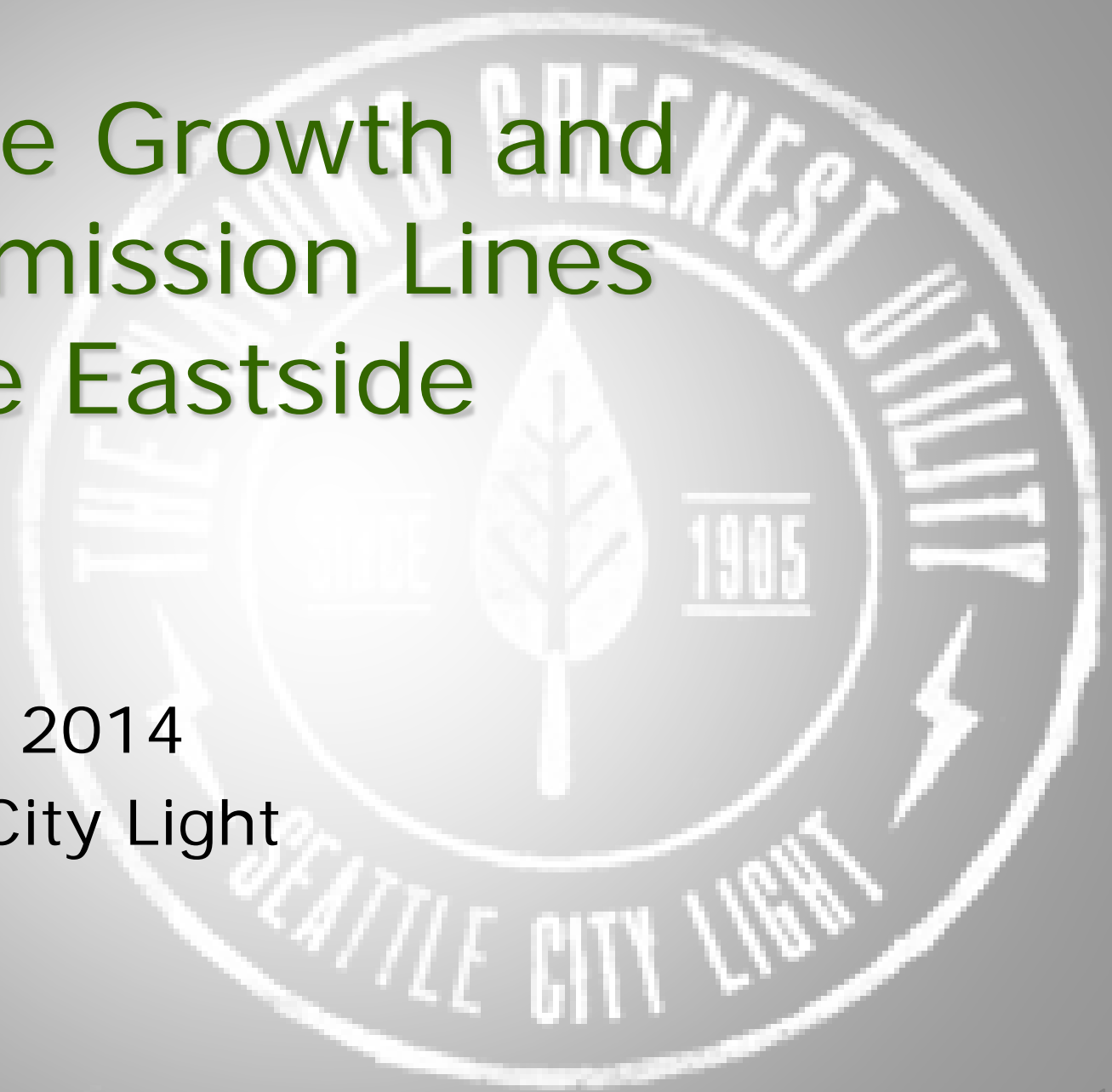


# Seattle Growth and Transmission Lines on the Eastside

May 14, 2014

Seattle City Light

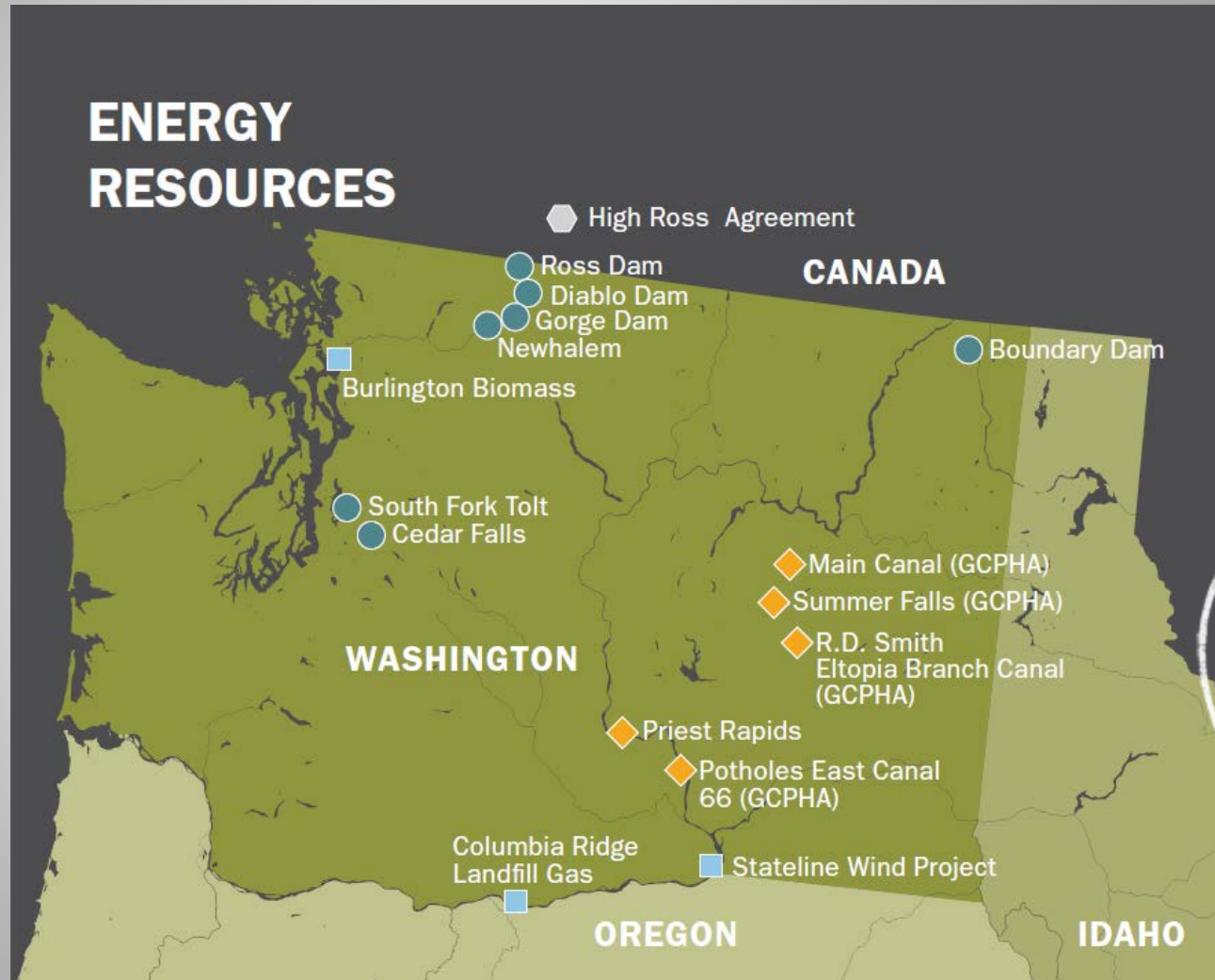


# Seattle City Light (SCL)

- Electric Utility
- Service Area Population: 776,340
- Service Area Size: 131.31 sq. miles
- Major Substations: 15
- Transmission Circuit Miles: 656
- Distribution Circuit Miles: approx. 2,500
- Meters: 418,000



# SCL Hydro Resources



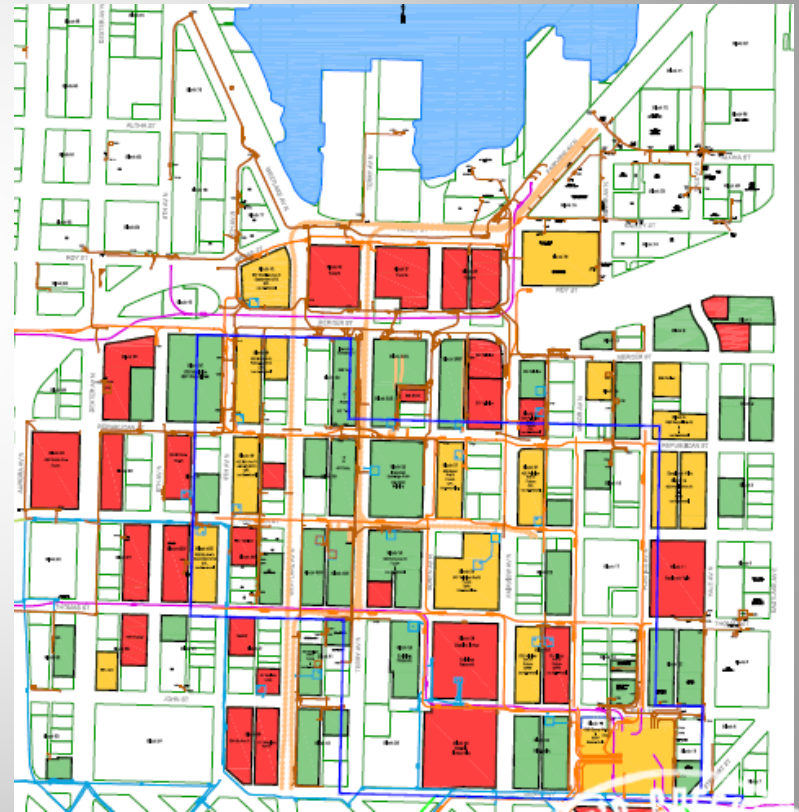
# Seattle Load Growth

- Significant construction
  - South Lake Union
  - Capital Hill Neighborhood
  - University District
  - Ballard Neighborhood
- Approximately 30 cranes in Seattle



# South Lake Union (SLU) and Denny Triangle

- 15 cranes (as of 4/28/14)
- Large developments
  - Amazon Headquarters
  - University of Washington
  - Touchstone
- Map Legend
  - Red—Planning/Permitting
  - Yellow—In construction
  - Green—Redeveloped
- Denny Substation



# South Lake Union and Denny Triangle



# Capital Hill Neighborhood

- 4 cranes (as of 4/28/14)
- Development
  - Mixed Use
  - Residential
  - Commercial





# University District

- 4 cranes (as of 4/28/14)
- Development
  - Mixed Use
  - Residential
  - Commercial





# Ballard Neighborhood

- 2 cranes (as of 4/28/14)
- Development from Single Family Homes to:
  - Mixed Use
  - Residential
  - Commercial



# Seattle City Light "Eastside Lines"

- From SnoKing Substation
- To Maple Valley Substation
- 230kV
- Double Circuit
- 25 miles
- Constructed 1939-40 to supply electricity from Skagit projects to SCL service area



# SCL “Eastside Lines”

SCL needs the connectivity and capacity of these transmission lines to:

- Maintain a contiguous Point of Delivery for transmission service from BPA
- Serve existing SCL load and maintain reliability
- Provide for future SCL growth
- Support regional transmission flows
- Meet NERC reliability requirements

