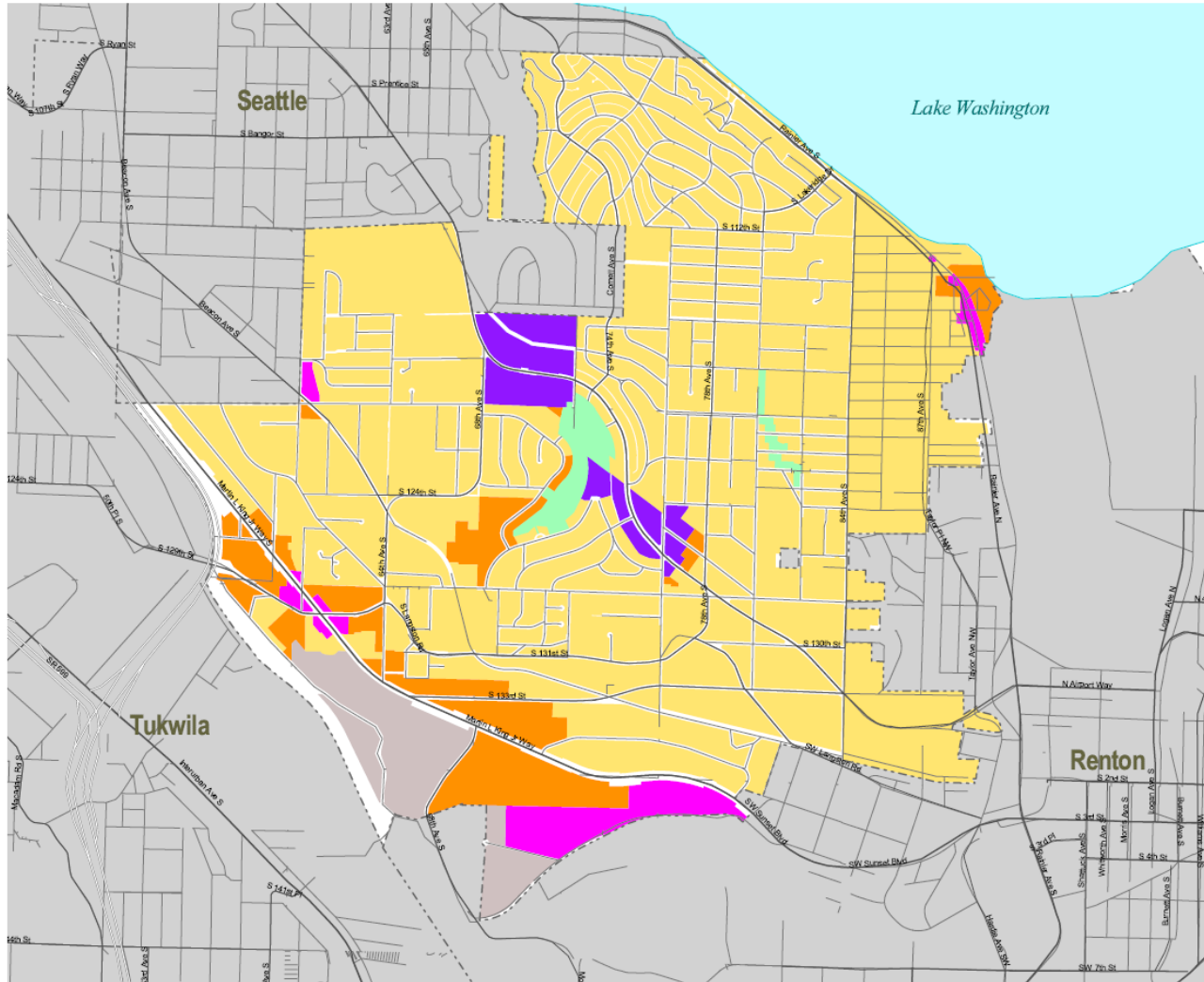




West Hill Comprehensive Plan Land Use

- Community Business
- Commercial Outside of Centers
- Urban Residential > 12du/ac
- Urban Residential 4-12 du/ac
- Industrial
- King County Owned
Open Space/Recreation



West Hill

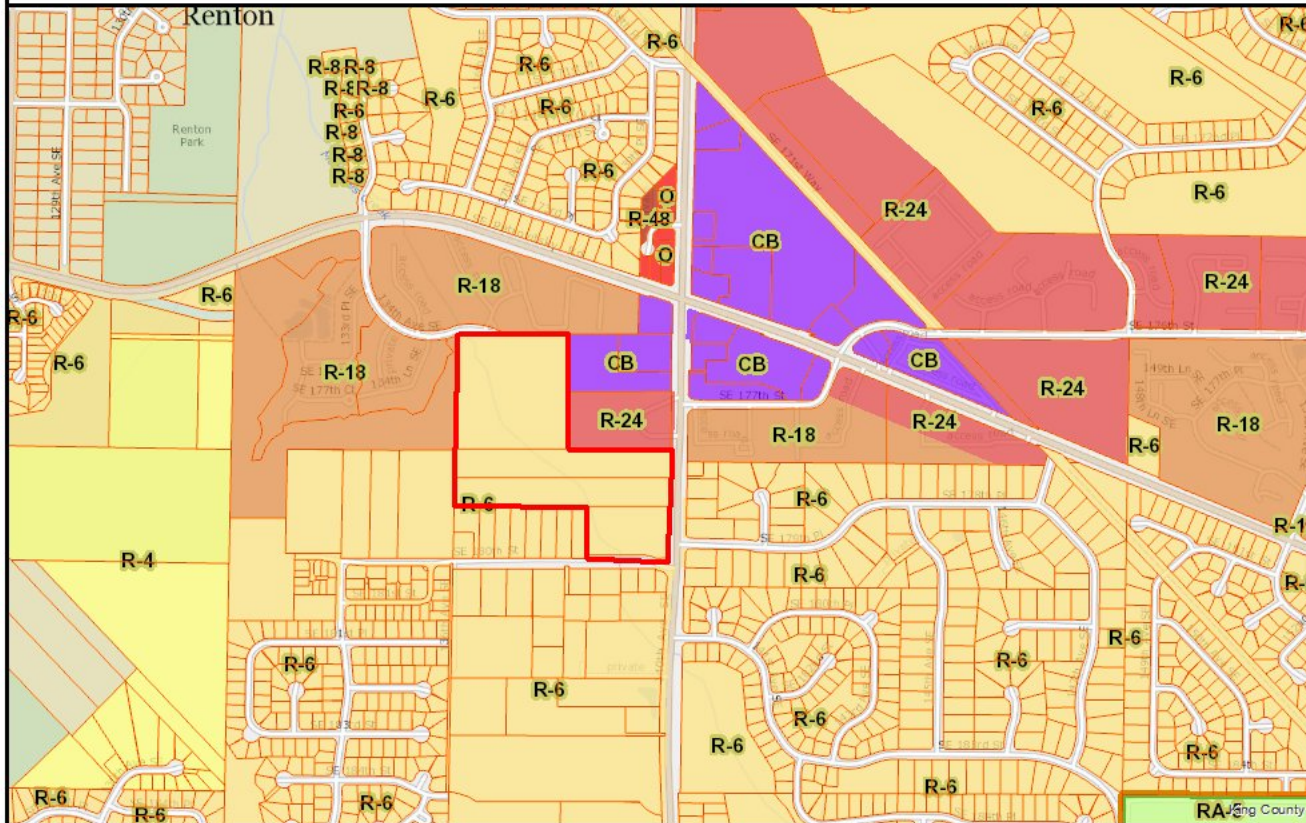

500 0 500 1000 Feet


King County
 Department of Development and Environmental Services
 Geographic Information System

This map is intended for planning purposes only and is not guaranteed to show accurate measurements.

Date: 03/18/2014 10:58:58 AM

Fairwood

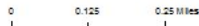


Fairwood

The information included on this map has been compiled by King County staff from a variety of sources and is subject to change without notice. King County makes no representation or warranty, express or implied, as to accuracy, completeness, timeliness, or rights to the use of such information. This document is not intended for use as a survey product. King County shall not be liable for any general, special, indirect, incidental, or consequential damages including, but not limited to, lost revenues or lost profits resulting from the use or misuse of the information contained on this map. Any sale of this map or information on this map is prohibited except by written permission of King County.

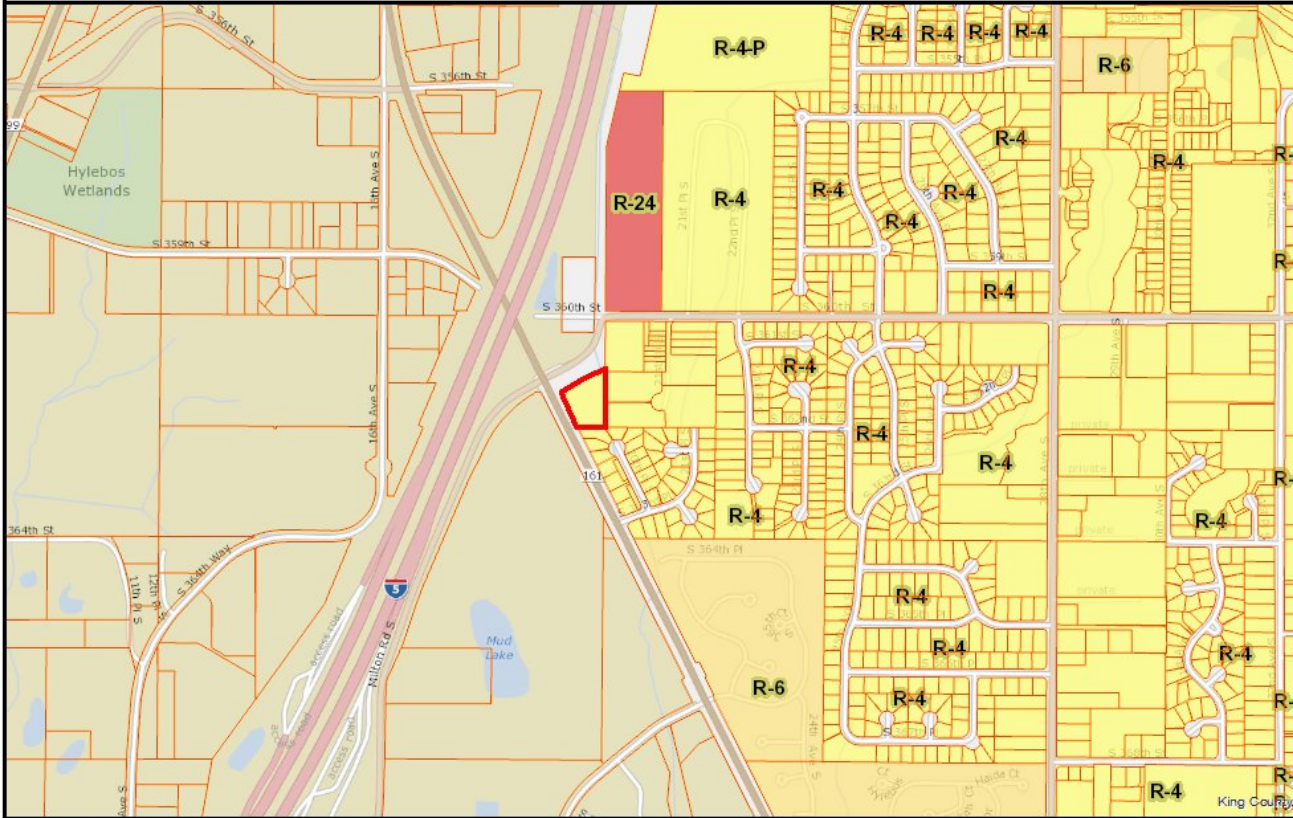
Date: 4/28/2015 King County

1 in : 1,104 feet



King County
GIS CENTER

Federal Way

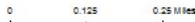


Federal Way

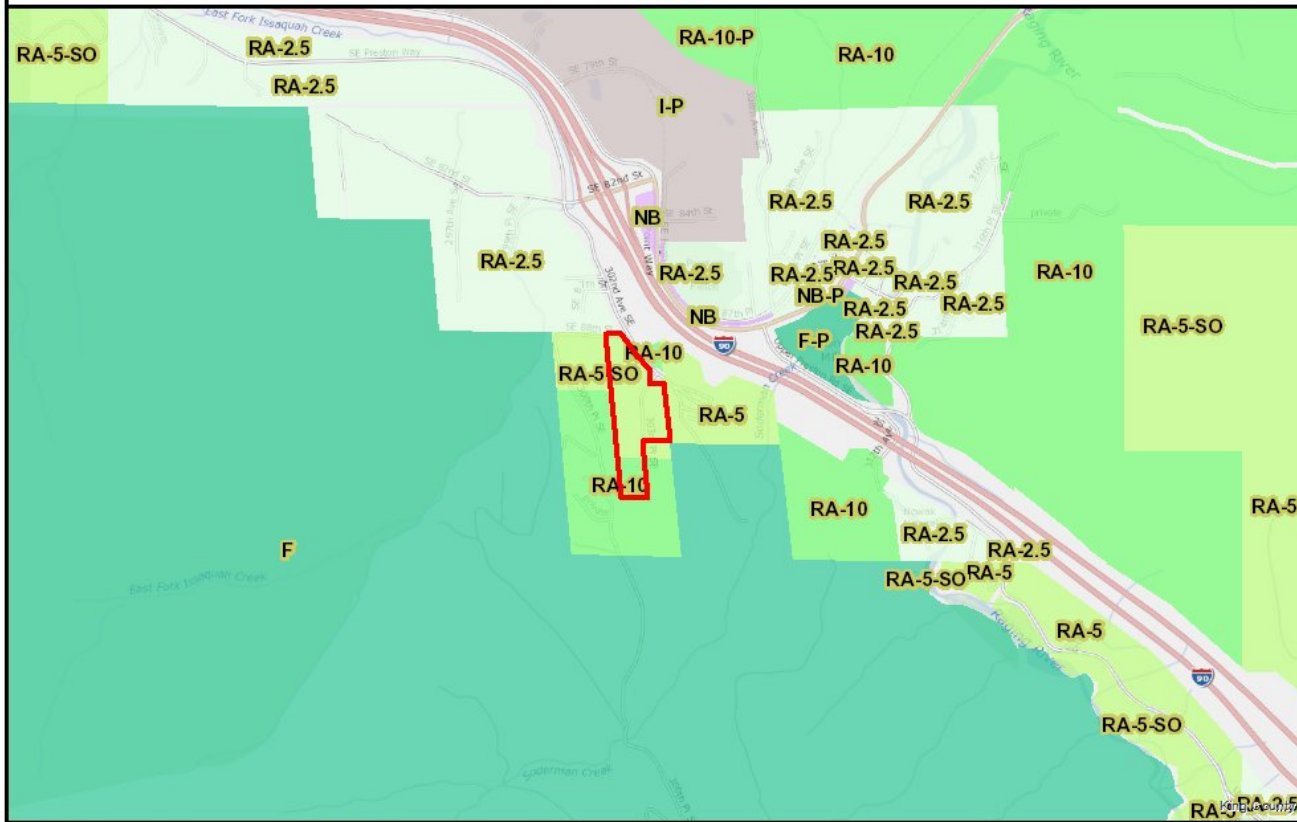
The information included on this map has been compiled by King County staff from a variety of sources and is subject to change without notice. King County makes no representations or warranties, express or implied, as to accuracy, completeness, timeliness, or rights to the use of such information. This document is not intended for use as a survey product. King County shall not be liable for any general, special, indirect, incidental, or consequential damages including, but not limited to, lost revenues or lost profits resulting from the use or misuse of the information contained on this map. Any sale of this map or information on this map is prohibited except by written permission of King County.

Date: 4/28/2015 King County

1 in : 1,104 feet



Allison



Allison

The information included on this map has been compiled by King County staff from a variety of sources and is subject to change without notice. King County makes no representations or warranties, express or implied, as to accuracy, completeness, timeliness, or rights to the use of such information. This document is not intended for use as a survey product. King County shall not be liable for any general, special, indirect, incidental, or consequential damages including, but not limited to, lost revenues or lost profits resulting from the use or misuse of the information contained on this map. Any sale of this map or information on this map is prohibited except by written permission of King County.

Date: 4/28/2015

King County

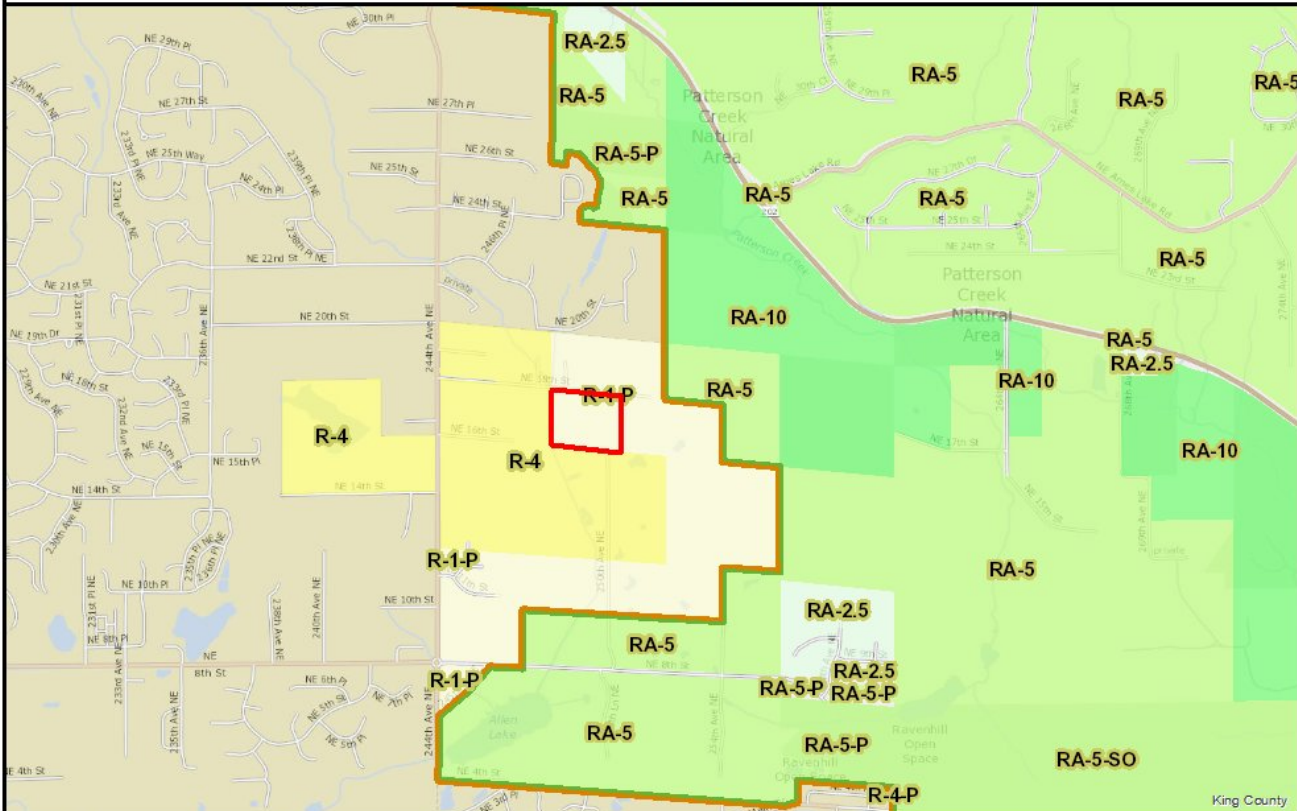
1 in : 2,208 feet

0 0.25 0.5 Miles



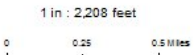
 **King County**
GIS CENTER

Timmerman



The information included on this map has been compiled by King County staff from a variety of sources and is subject to change without notice. King County makes no representations or warranties, express or implied, as to accuracy, completeness, timeliness, or rights to the use of such information. This document is not intended for use as a survey product. King County shall not be liable for any general, special, indirect, incidental, or consequential damages including, but not limited to, lost revenues or lost profits resulting from the use or misuse of the information contained on this map. Any sale of this map or information on this map is prohibited except by written permission of King County.

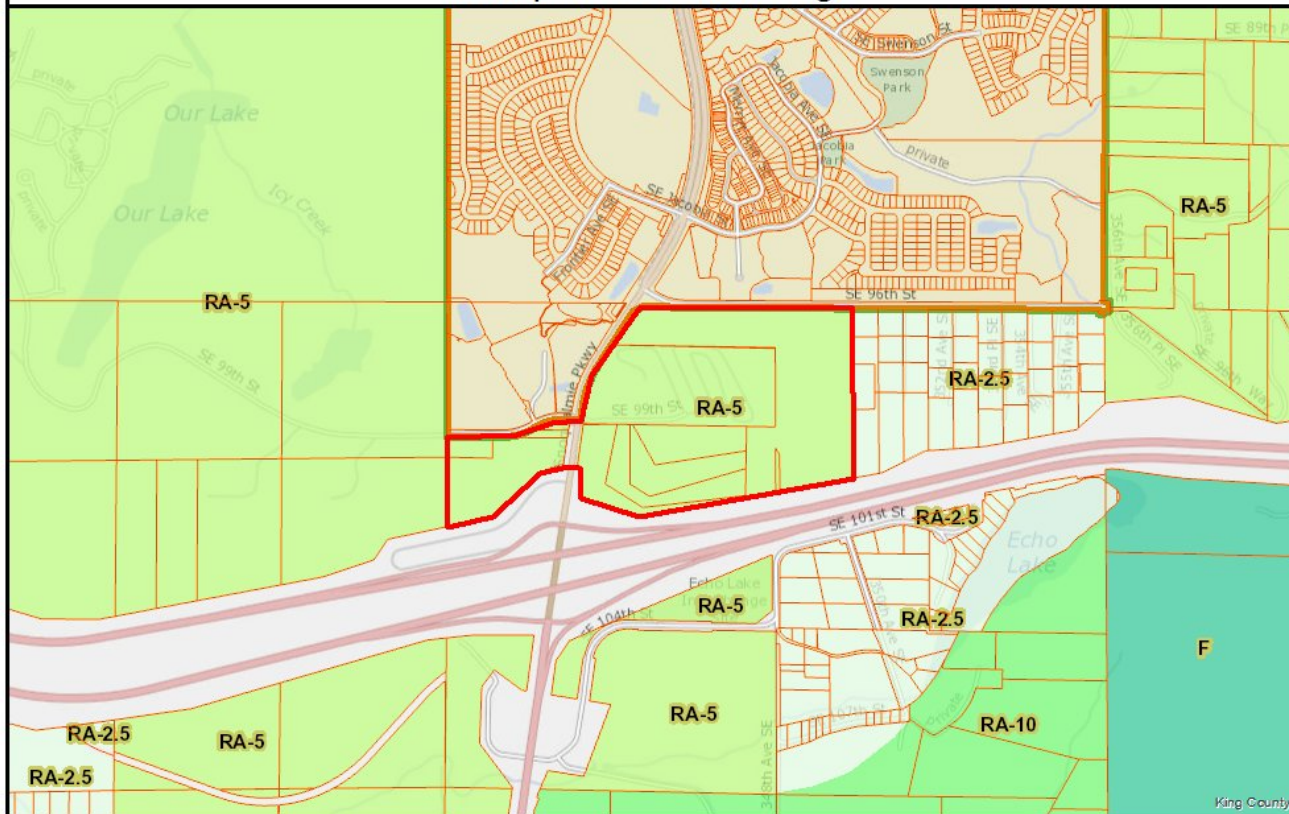
Date: 4/28/2015 King County



 **King County**
GIS CENTER

Timmerman

Snoqualmie Interchange



Snoqualmie Interchange

The information included on this map has been compiled by King County staff from a variety of sources and is subject to change without notice. King County makes no representations or warranties, express or implied, as to accuracy, completeness, timeliness, or rights to the use of such information. This document is not intended for use as a survey product. King County shall not be liable for any general, special, indirect, incidental, or consequential damages including, but not limited to, lost revenues or lost profits resulting from the use or misuse of the information contained on this map. Any sale of this map or information on this map is prohibited except by written permission of King County.

Date: 4/28/2015

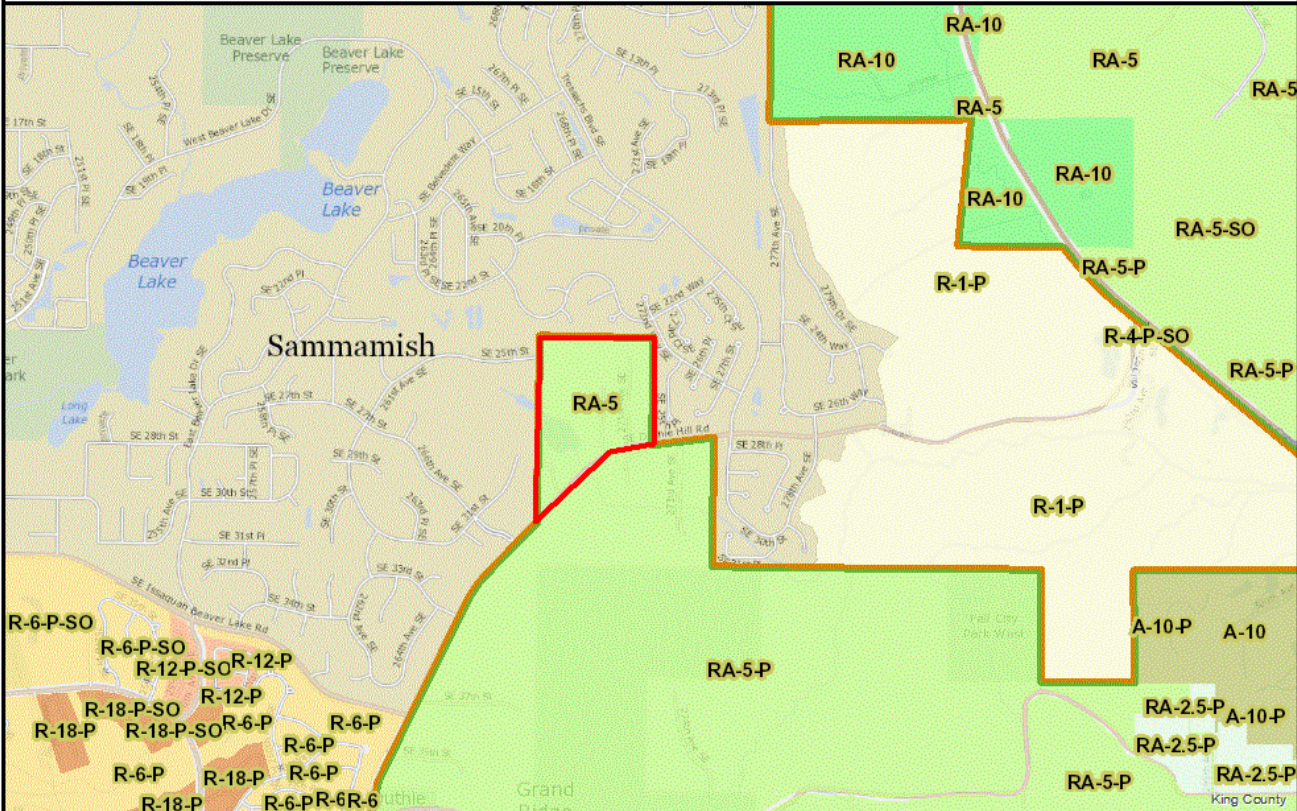
King County

1 in : 1,505 feet
0 0.15 0.3 Miles



 **King County**
GIS CENTER

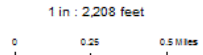
Duthie Hill



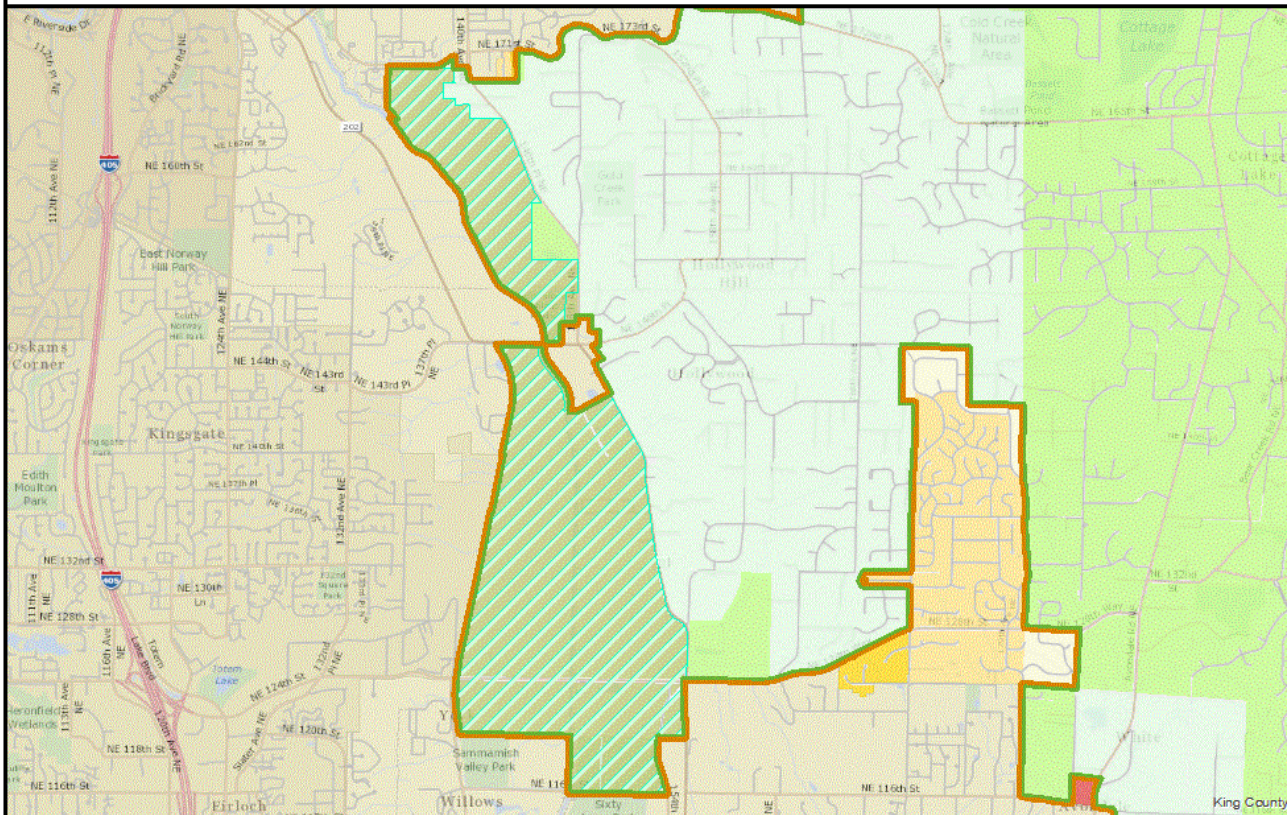
Duthie Hill

The information included on this map has been compiled by King County staff from a variety of sources and is subject to change without notice. King County makes no representation or warranties, express or implied, as to accuracy, completeness, timeliness, or rights to the use of such information. This document is not intended for use as a survey product. King County shall not be liable for any general, special, indirect, incidental or consequential damages including, but not limited to, lost revenues or lost profits resulting from the use or misuse of the information contained on this map. Any sale of this map or information on this map is prohibited except by written permission of King County.

Date: 4/28/2015 King County



Woodinville



Woodinville

The information included on this map has been compiled by King County staff from a variety of sources and is subject to change without notice. King County makes no representations or warranties, express or implied, as to accuracy, completeness, timeliness, or rights to the use of such information. This document is not intended for use as a survey product. King County shall not be liable for any general, special, indirect, incidental, or consequential damages including, but not limited to, lost revenues or profits resulting from the use or misuse of the information contained on this map. Any sale of this map or information on this map is prohibited except by written permission of King County.

Date: 4/28/2015

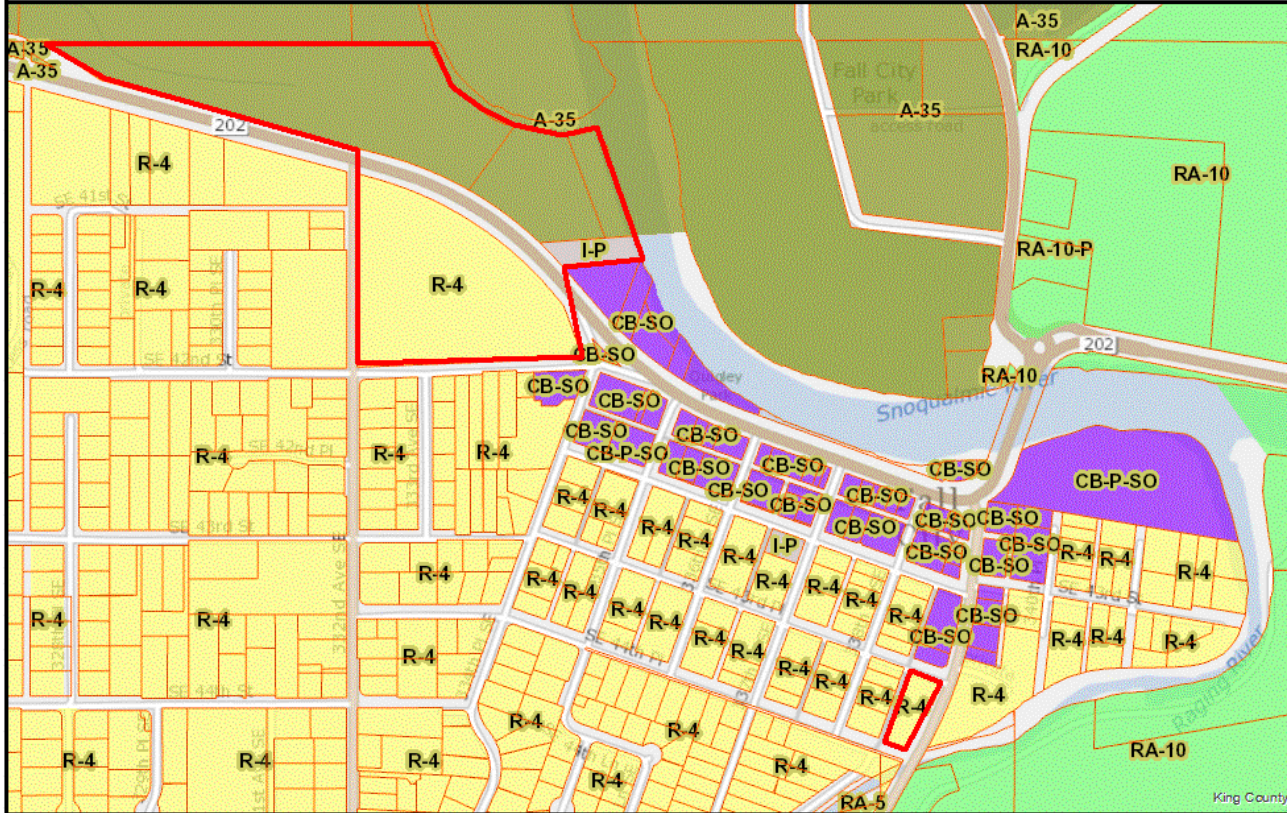
King County

1 in : 4,417 feet
0 0.5 1 Miles



 **King County**
GIS CENTER

Fall City



Fall City

The information included on this map has been compiled by King County staff from a variety of sources and is subject to change without notice. King County makes no representations or warranties, express or implied, as to accuracy, completeness, timeliness, or rights to the use of such information. This document is not intended for use as a survey product. King County shall not be liable for any general, special, indirect, incidental, or consequential damages including, but not limited to, lost revenues or lost profits resulting from the use or misuse of the information contained on this map. Any sale of this map or information on this map is prohibited except by written permission of King County.

Date: 4/28/2015

King County

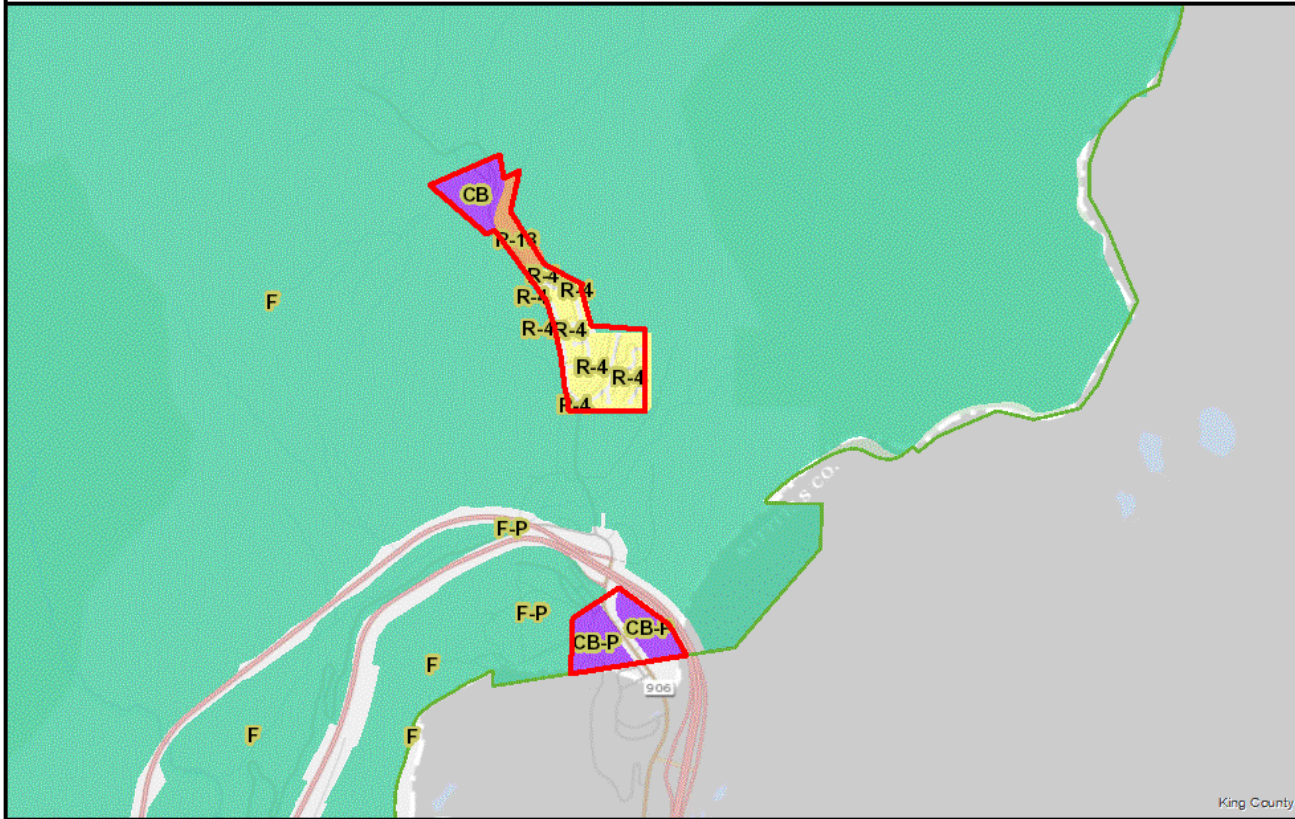
1 in : 752 feet

0 0.075 0.15 Miles



 **King County**
GIS CENTER

Snoqualmie Pass



Snoqualmie Pass

The information included on this map has been compiled by King County staff from a variety of sources and is subject to change without notice. King County makes no representation or warranties, express or implied, as to accuracy, completeness, timeliness, or rights to the use of such information. This document is not intended for use as a survey product. King County shall not be liable for any general, special, indirect, incidental, or consequential damages including, but not limited to, lost revenues or lost profits resulting from the use or misuse of the information contained on this map. Any sale of this map or information on this map is prohibited except by written permission of King County.

Date: 4/28/2015

King County

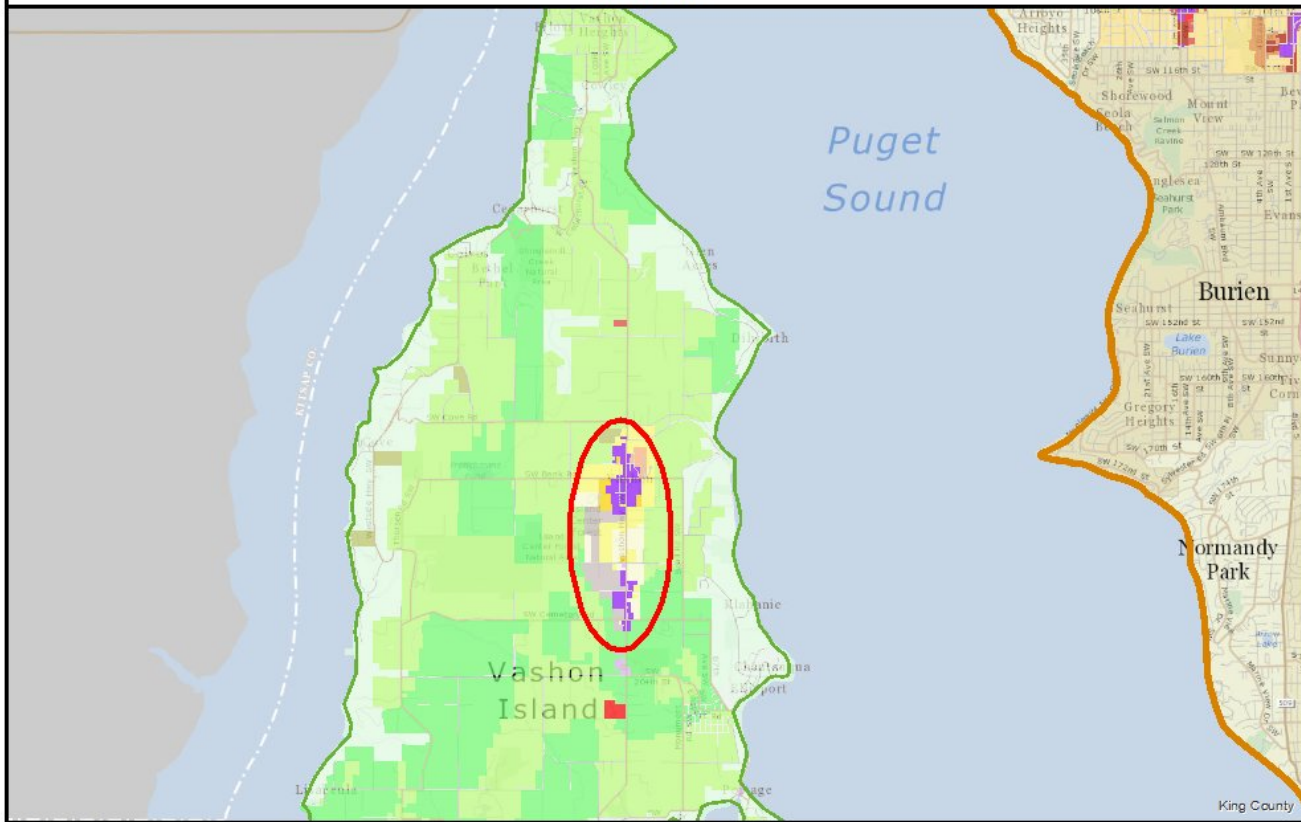
1 in : 3,009 feet

0 0.325 0.65 Miles



 **King County**
GIS CENTER

Vashon



Vashon

The information included on this map has been compiled by King County staff from a variety of sources and is subject to change without notice. King County makes no representations or warranties, express or implied, as to accuracy, completeness, timeliness, or rights to the use of such information. This document is not intended for use as a survey product. King County shall not be liable for any general, special, indirect, incidental, or consequential damages including, but not limited to, lost revenues or lost profits resulting from the use or misuse of the information contained on this map. Any sale of this map or information on this map is prohibited except by written permission of King County.

Date: 4/28/2015

King County

1 in : 8,834 feet

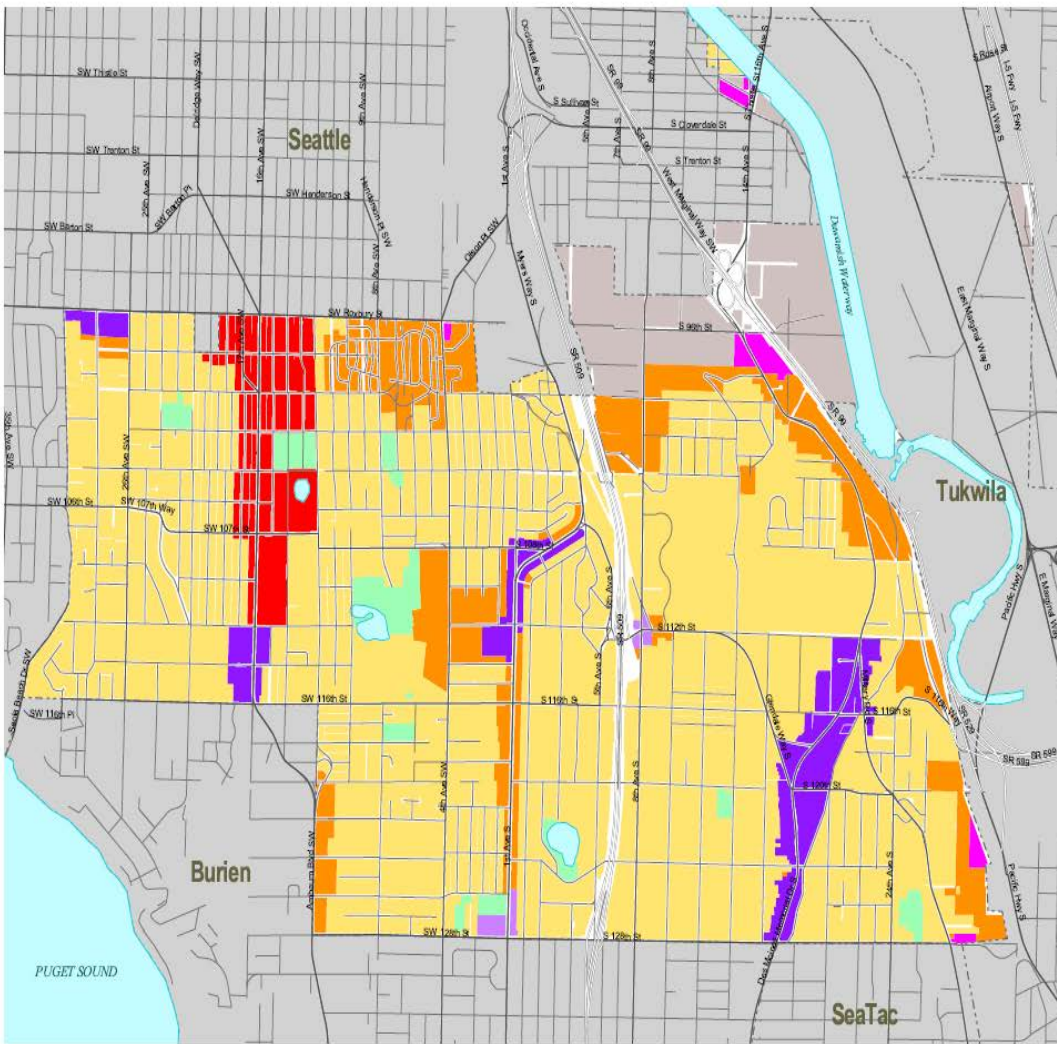
0 1 2 Miles



 **King County**
GIS CENTER

North Highline Comprehensive Plan Land Use

- Activity Center
- Community Business
- Commercial Outside of Centers
- Urban Residential > 12du/ac
- Urban Residential 4-12 du/ac
- Industrial
- King County Owned
Open Space/Recreation



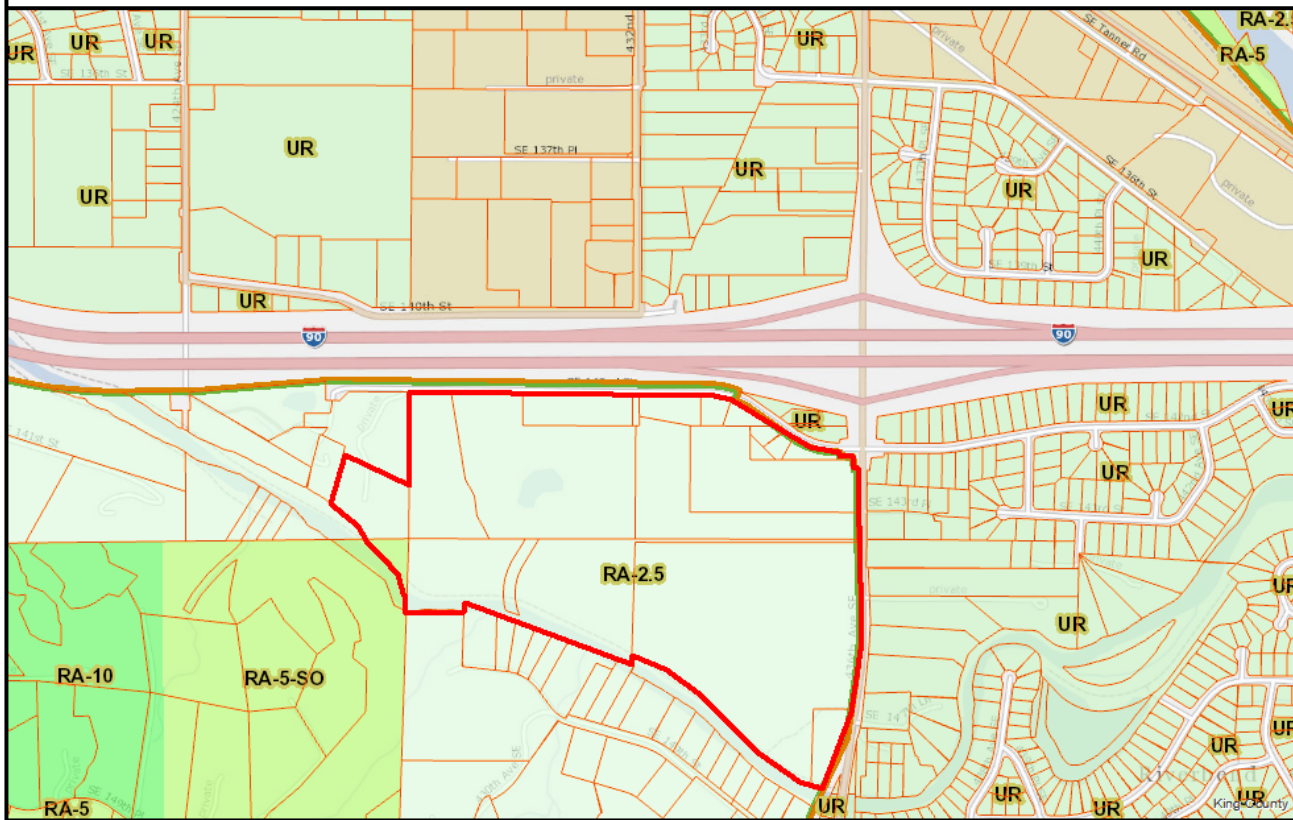
Highline



King County
Department of Development and Environmental Services
DDSES Geographic Information System

This map is intended for planning purposes only and is not guaranteed to show accurate measurements.

North Bend



The information included on this map has been compiled by King County staff from a variety of sources and is subject to change without notice. King County makes no representations or warranties, express or implied, as to accuracy, completeness, timeliness, or rights to the use of such information. This document is not intended for use as a survey product. King County shall not be liable for any general, special, indirect, incidental, or consequential damages including, but not limited to, lost revenues or lost profits resulting from the use or misuse of the information contained on this map. Any sale of this map or information on this map is prohibited except by written permission of King County.

Date: 4/28/2015

King County

1 in : 1,104 feet
0 0.125 0.25 Miles



 **King County**
GIS CENTER

North Bend