

Department of Natural Resources



Natural Climate Solutions Funding Update

King County Council TrEE Committee

January 20, 2024

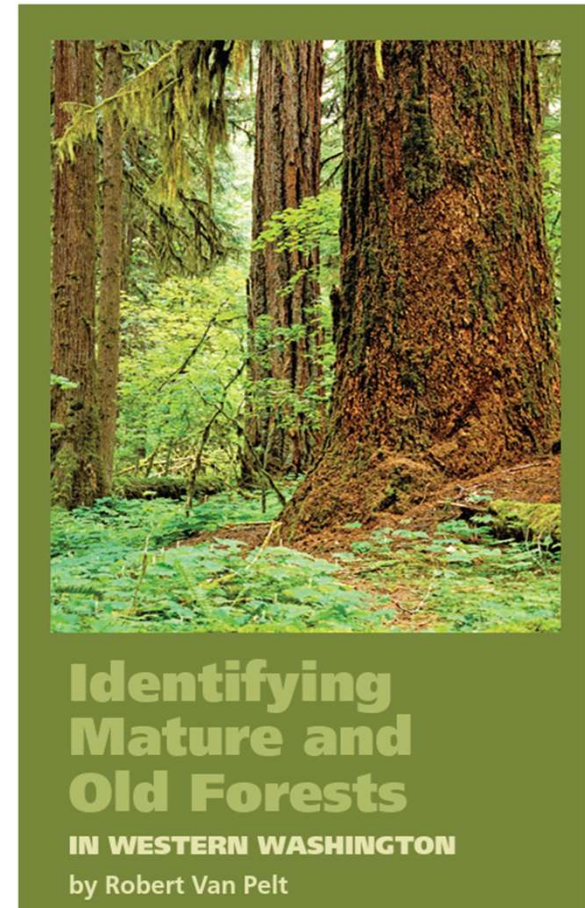
Duane Emmons, Assistant Deputy Supervisor for State Uplands

Identification of 2000 Acres

Status

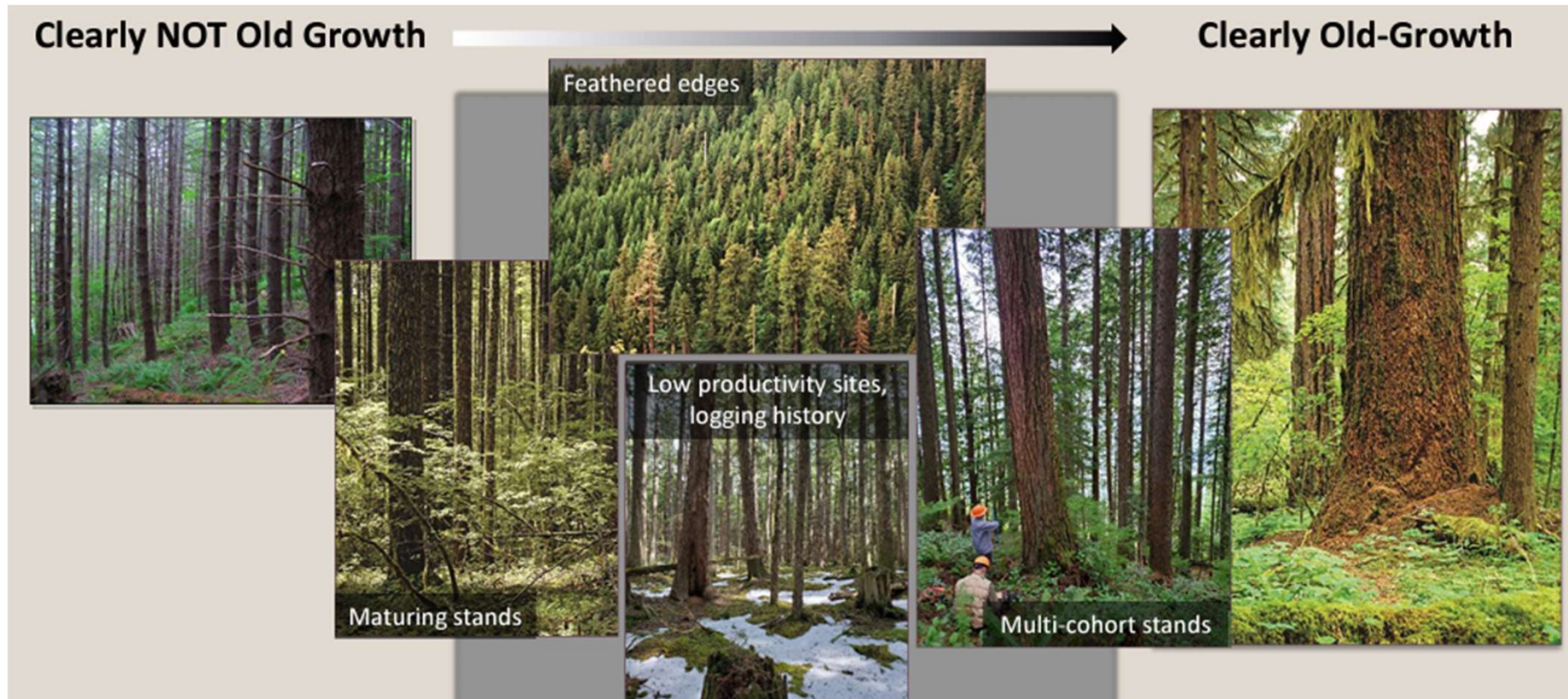
- Identification of 2000 acres
 - Utilizing Van Pelt's guide definitions of Maturation 1 and Maturation 2 to help identify "carbon dense, structurally complex" forests.
 - Seeking to conserve areas adjacent to existing habitat, in areas to improve connectivity, and to avoid isolated small fragments scattered across ownership.
- County Concurrence

Discussing the process of identification, land transaction process, and nature of federal and state forest transfer trusts with counties



Funding for Land Acquisitions

Selections based on science to ensure durable carbon storage over time



Identification of 2000 Acres

Methodology

A stand must have at least 60 metric tons per acre of live carbon and meet one or more of the following criteria:

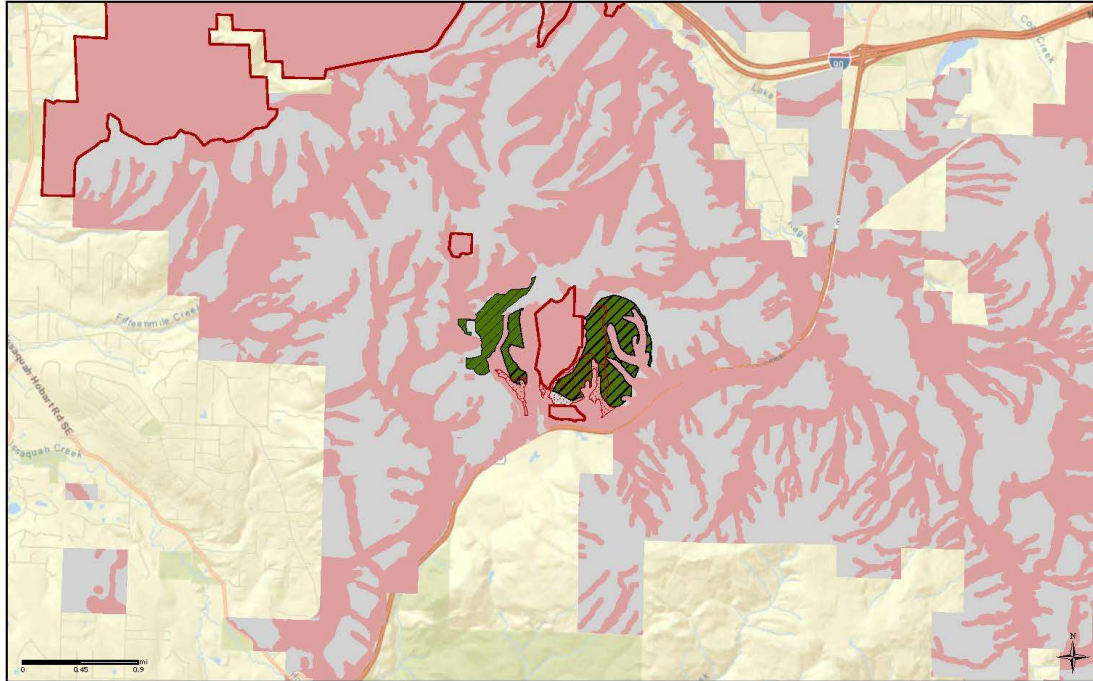
- At least 1.8 modeled canopy layers
- A Quadratic Mean Diameter* of at least 17 inches for the largest 100 trees
- At least 12 trees per acre that are in the 30 inch diameter class or larger

*The quadratic mean gives greater weight to larger trees and is equal to or greater than the arithmetic mean.

In stands with small diameters and a narrow range of diameters, the differences are slight. In stands with large diameters and a wide range of diameters present or with strongly skewed diameter distributions, the differences between arithmetic mean and quadratic mean diameters can be substantial.



King County



Potential 2000 Acres Sites
West Tiger Mtn

West Tiger Mountain

Trusts	Acres
State Forest Transfer	136
Scientific School	31
Capitol Grant	125
Grand Total	292

King County

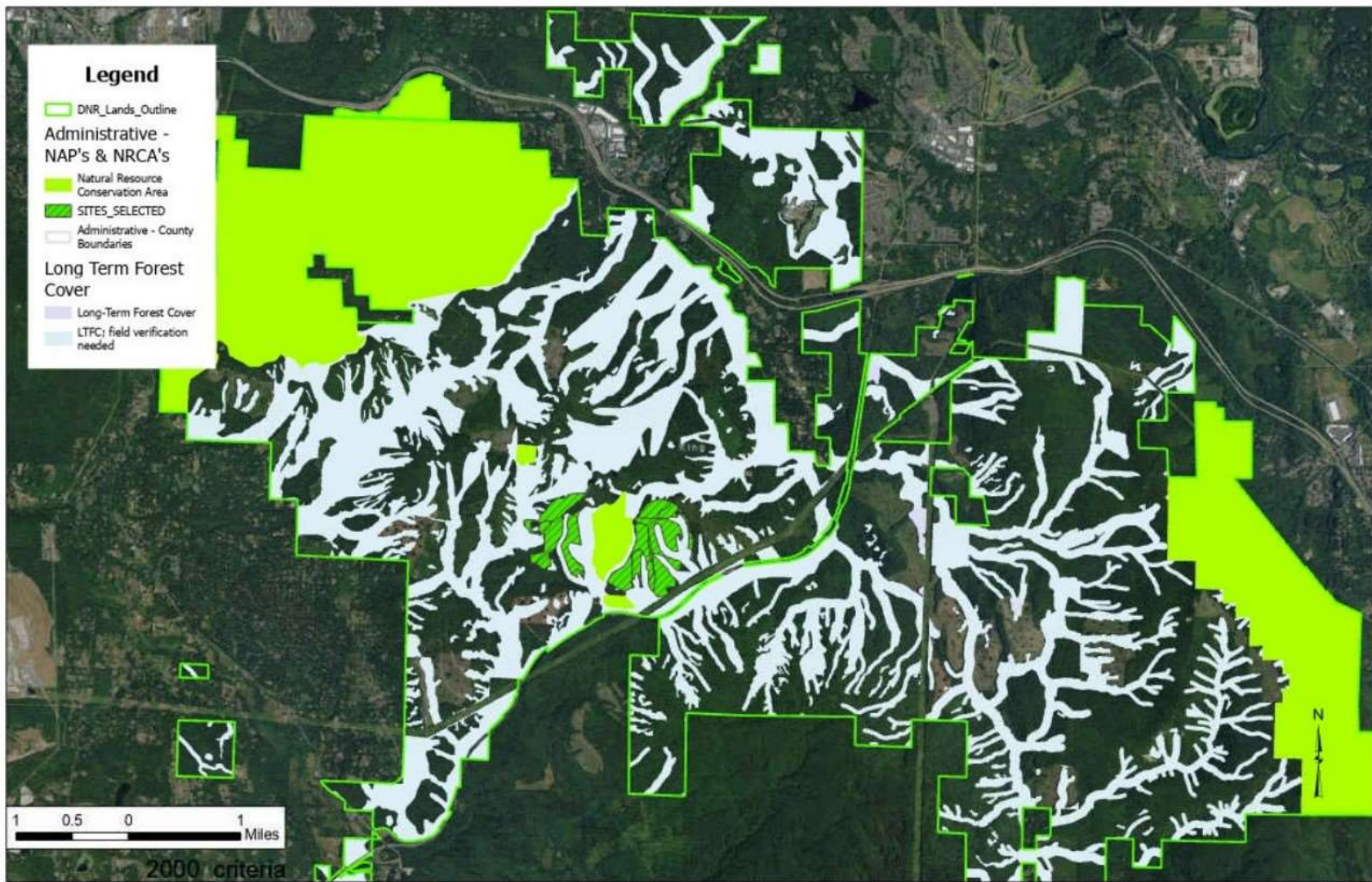


Potential 2000 Acres Sites
West Tiger Mtn

Co-benefits

Adjacent to existing Natural Resource Conservation Area

Within the Mountains to Sound Greenway National Heritage Area and adjacent to Hwy 18



Next Steps

County Concurrence

Letters have been sent to each county with a request for concurrence by January 31st

Land Transfers

Land transfers will occur as lands are acquired for each trust.

Transfers must be appraised for full fair market value.

Acquisitions and transfers will each be presented to the board for approval



