


**PROPOSED RIGHT-OF-WAY VACATION**

*For Informational Use Only*  
 Site Map

**H. Steen Rd - County Rd No. 1604**  
**103rd Avenue SW**  
 10208 SW 153rd Street, Vashon  
 Vacation File V-2694  
 SE 19-23-03

 Vacation Area

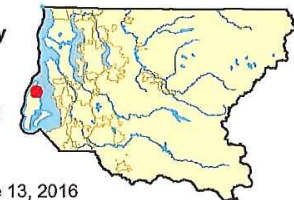
 KC Maintained ROW

The information included on this map has been compiled by King County staff from a variety of sources and is subject to change without notice.  
 King County makes no representations or warranties, express or implied, as to accuracy, completeness, timeliness, or rights to the use of such information.  
 This document is not intended for use as a survey product. King County shall not be liable for any general, special, indirect, incidental, or consequential damages including, but not limited to, lost revenues or lost profits resulting from the use or misuse of the information contained on this map.  
 Any sale of this map or information on this map is prohibited except by written permission of King County.

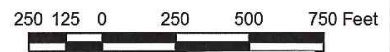


King County Overview Map

King County



June 13, 2016



RoadServices\Bounds&Vacs\Vacations\Current Road Vacations\V-2694 McIntyre\Maps