

Bourguignon, Mary

From: Claudon, Lynn <LynnClaudon@dwt.com>
Sent: Wednesday, June 13, 2012 8:47 AM
To: Bourguignon, Mary
Cc: Moore, Kendall
Subject: 2 bedrooms
Attachments: 1218_001.pdf

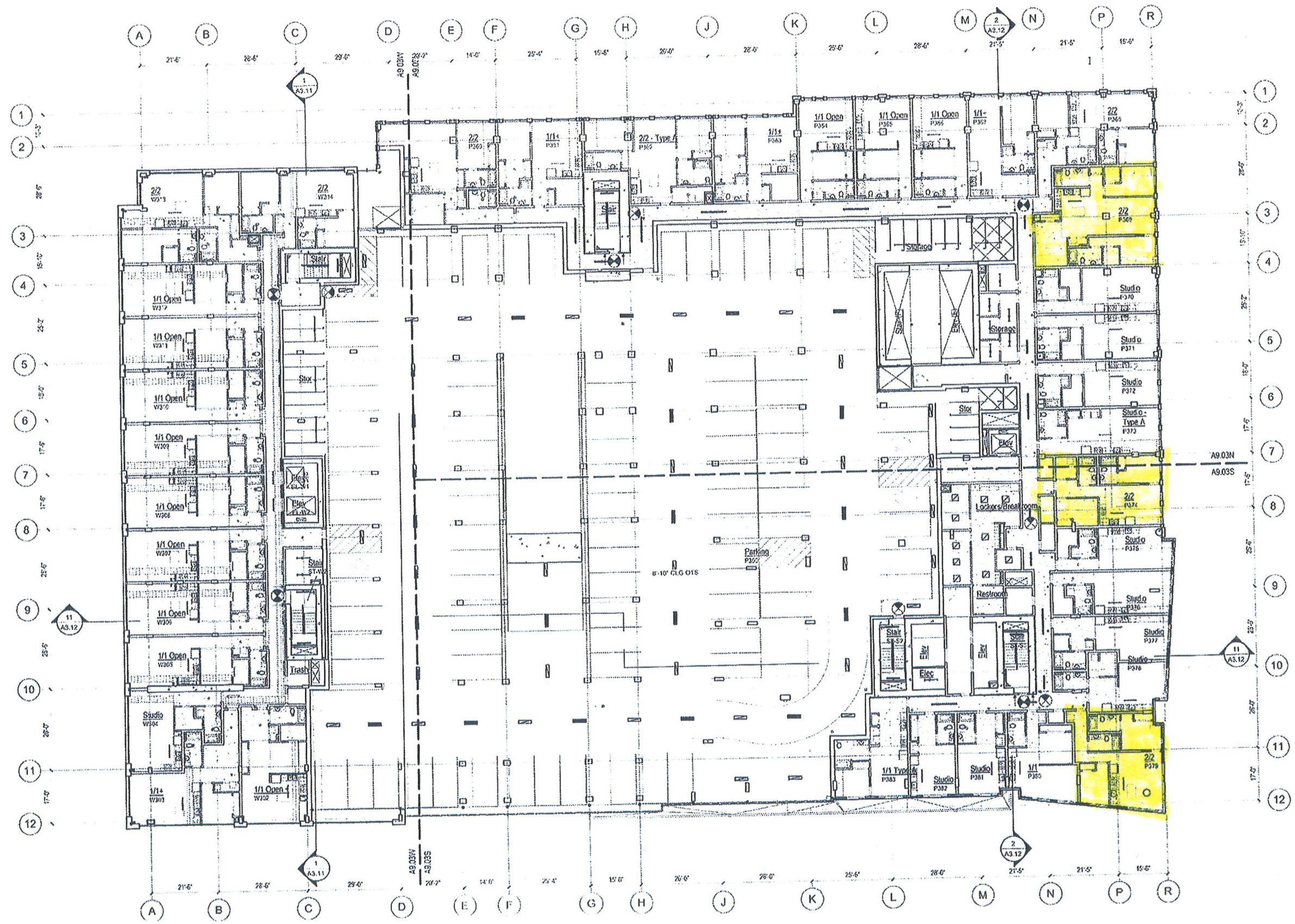
Here you go – this should help.

From: Kevin Daniels [<mailto:kevin.daniels@NSCO.com>]
Sent: Wednesday, June 13, 2012 8:45 AM
To: Claudon, Lynn
Subject: 2 bedrooms

I'm sorry for the confusion I caused yesterday with my response on the 2 bedroom units. Here are the actual construction plans that were permitted and are being built.

The confusion results from a mistake by the architects where unit # 28 was reclassified on the marketing floor plans as a 1 bedroom plus. As is clearly visible the unit has 2 bedrooms and 2 baths.

Therefore we have 3 – 2 bedroom units on both the 3rd & 4th floors for a total of 6 – 2 bedroom units.



Bourguignon, Mary

From: Claudon, Lynn <LynnClaudon@dwt.com>
Sent: Wednesday, June 13, 2012 8:03 AM
To: Bourguignon, Mary
Cc: Moore, Kendall
Subject: FW:
Attachments: 1199_001.pdf

Sorry – this didn't get to you yesterday

From: Kevin Daniels [<mailto:kevin.daniels@NSCO.com>]
Sent: Tuesday, June 12, 2012 12:29 PM
To: Claudon, Lynn
Subject:

I drew the line incorrectly.

On the 6 vs 4 - 2 bedrooms, the architects have changed the classification on 2 of the 2 bedrooms/2 bathrooms to what they call one bedroom/one bath plus room. Same exact unit design as before, just a different classification on their part. Mary is welcome to change it back for her purposes. Nothing changed from before.

KING STREET

gross construction area
72,617 GSF

INCOME AREA

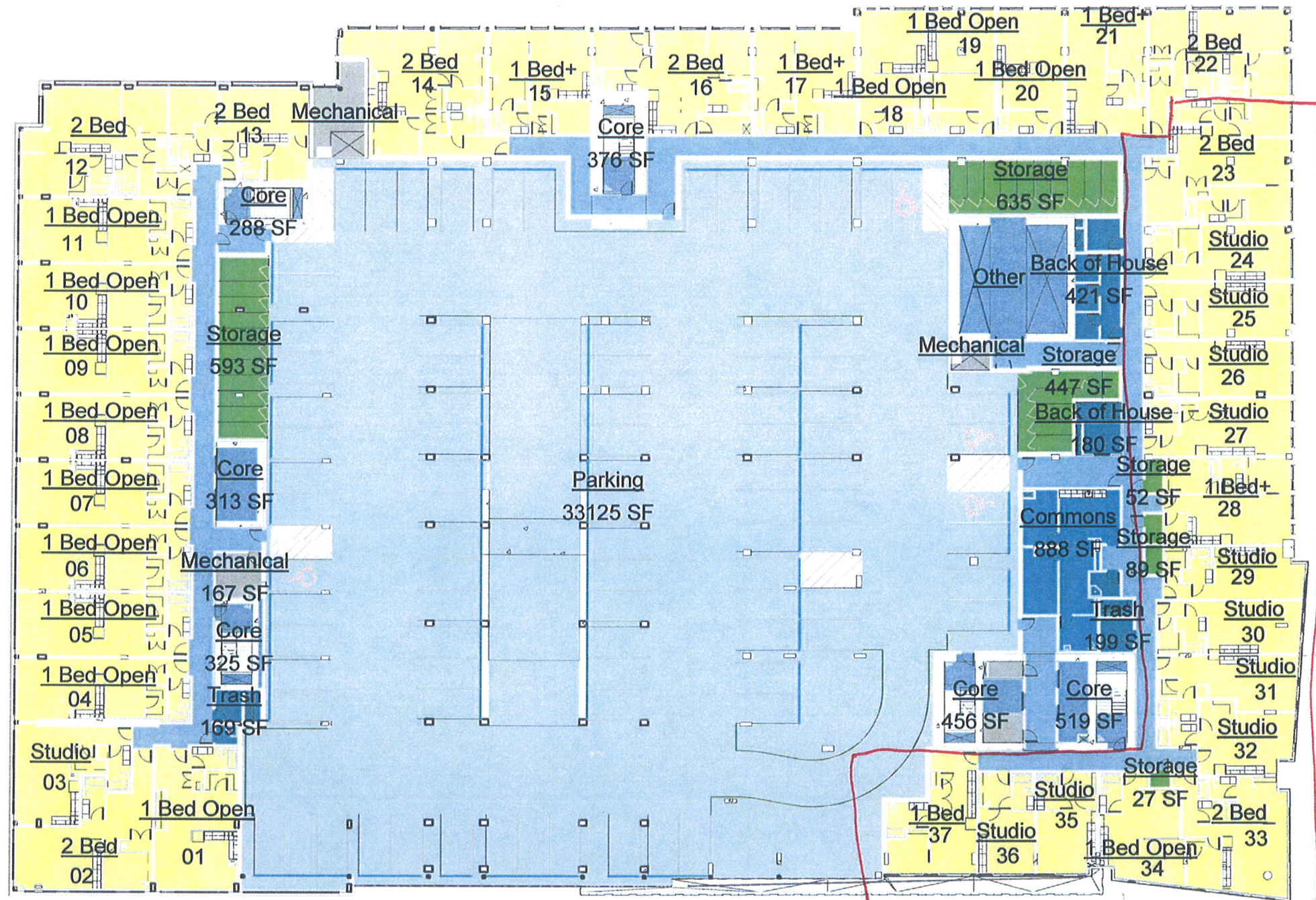
- parking
96 STALLS
33,125 SF
- storage
1,843 NRA | 66+ UNITS
37 units
27,405 NRA

SUPPORT AREA

- amenity
888 SF
- mechanical
300 SF
- back of house
969 SF
- circulation
4,280 SF
- vertical circulation
2,277 SF

OCCIDENTAL AVE

2ND AVE



3RD FLOOR PLAN - PODIUM

PODIUM - AREAS/USES
Stadium Place

West Tower			Units												
units type	NRA/Flr.		1	2	3	4	5	6	7	8	9	10	11	12	13
2 1 Studio	692	692			692										
2 9 Open/1	790	7,106	790												
2 0 1/1	0	-													
2 3 2/2	968	2,964			911									1,161	892
	13	10,761													

North Tower			Units														
units type	NRA/Flr.		14	15	16	17	18	19	20	21	22	23	24	25	26	27	28
2 4 Studio	598	2,392												596	596	593	607
2 3 Open/1	602	1,805						599	604	602							
2 0 1/1	0	-															
2 4 1/1+	764	3,057			765		781				719						791
2 4 2/2	1,075	4,298	1,146		1,006								962	1,184			
	15	11,552	770														

South Tower			Units								
units type	NRA/Flr.		29	30	31	32	33	34	35	36	37
2 6 Studio	495	2,969	495							496	416
2 1 Open/1	589	589	589					589			
2 1 1/1	665	665	665								665
2 1 2/2	869	869				869					
	9	5,092									

JOB NO.
50925

DATE
05/01/2012

DWG. NO.

R2.03-

KING STREET

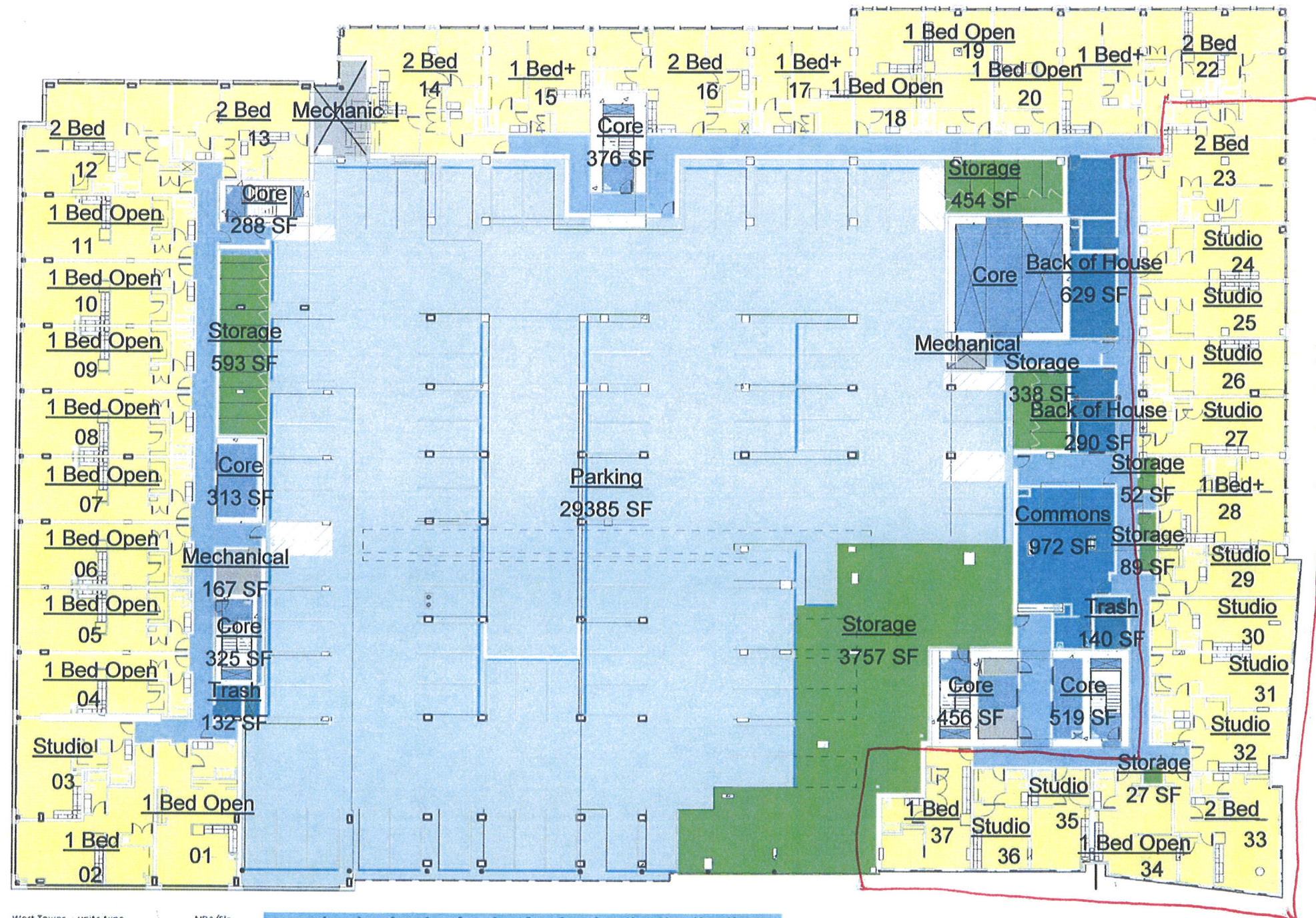
gross construction area
72,617 GSF
INCOME AREA

parking
89 STALL
29,385 SF
storage
5,310 NRA | 64+ UNITS
residential units
37 units
27,405 NRA

SUPPORT AREA
amenity
972 SF

mechanical
300 SF
back of house
1,191 SF
circulation
4,247 SF
vertical circulation
2,277 SF

OCCIDENTAL AVE



West Tower		units type	NRA/Fir.	1	2	3	4	5	6	7	8	9	10	11	12	13		
3 & 4	2	1 Studio	692 692 692			692												
	2	9 Open/1	790 7,106 790	868			781 779 781 779 779 779 779											
	2	0 1/1	0 - -															
	2	3 2/2	988 2,964 988		911										1,161 892			
		13	10,761															
North Tower		units type	NRA/Fir.	14	15	16	17	18	19	20	21	22	23	24	25	26	27	28
3 & 4	2	4 Studio	598 2,392 598											596 596 593 607				
	2	3 Open/1	602 1,805 602					599 604 602										
	2	0 1/1	0 - -															
	2	4 1/1+	764 3,057 764			765	781			719								791
	2	4 2/2	1,075 4,298 1,075	1,146		1,006						962 1,184						
		15	11,552 770															
South Tower		units type	NRA/Fir.	29	30	31	32	33	34	35	36	37						
3 & 4	2	6 Studio	495 2,969 495	516 541 552 509						496 416								
	2	1 Open/1	589 589 589					589										
	2	1 1/1	665 665 665								665							
	2	1 2/2	869 869 869				869											
		9	5,092															

4TH FLOOR PLAN - PODIUM
PODIUM - AREAS/USES
Stadium Place

JOB NO.
50925
DATE
05/01/2012
DWG. NO.
R2.04-