



Route 200 Service Changes

Public Engagement Report

May 22 – June 15, 2015

Prepared by

King County Department of Transportation Communications

July 2015

Contents

Overview	3
Notifications – how we let people know they could participate	4
Website	4
Route subscriber notification	4
Media coverage	4
Social media	4
Emails to community partners	4
Fliers	4
Feedback methods – how people shared their opinions	5
Online survey	5
In-person conversations with riders	5
Online survey results	6
Who we heard from and where they go	6
Responses about changes to Route 200	8
Phase 1 route changes	8
Phase 2 route proposals	9
What we heard while riding the bus	12
Appendix 1: Notifications and feedback	14
Public email	14
Metro online	15
Social media	16
Transit alert	18
Appendix 2: Media coverage	19
Appendix 3: Survey questions and response summaries	21
Appendix 4: All survey responses	29

Overview

Our outreach for the Route 200 service change was designed to inform people in the greater Issaquah area that the bus route would be extended to the Issaquah Highlands Park-and-Ride in June 2015, and to engage the community about a secondary proposal to extend the route even farther, to Swedish Medical Center Issaquah, and shorten it near Issaquah High School in March 2016. We referred to these two changes as Phase 1 and Phase 2, respectively.

This report summarizes our key outreach activities and the results of our online survey and face-to-face interviews.

Notifications – how we let people know they could participate

Website

A project page was created in the Have a Say section of Metro's website, which also has pages on other prominent projects. Page content included descriptions of the changes planned for June 2015 and those proposed for March 2016, as well as maps and contact information.

Route subscriber notification

We sent email and text messages to approximately 5,316 subscribers who had requested information about Metro routes 200, 214, 216, 218, 219, and 269 and Sound Transit Route 554.

Media coverage

Articles appeared in both print and online versions of The Issaquah Press (*Route 200 Freebee bus to change service area, extend to Highlands*, June 3, 2015) and in both print and online versions of Issaquah Highlands Connections (*Life without a car in the 'burbs*, June 2015).

Social media

Metro shared news about Route 200 on Twitter, and both the City of Issaquah and Issaquah Highlands tweeted about it as well. Metro aimed to drive visits to the Have a Say website and increase online survey participation. The City of Issaquah had a Facebook post and several community members "liked" the news and shared comments.

Emails to community partners

The City of Issaquah sent notifications about the changes to its stakeholder lists, and the Issaquah Highlands Community Association highlighted the proposal in its member email newsletter and on its website.

Fliers

A Metro staff member handed out printed fliers about the changes to bus riders, and left a stack of fliers at the Issaquah Community Center. He also posted the fliers on the community bulletin board at the Issaquah Fred Meyer, and briefed the customer service desk there in case they received questions about the Fred Meyer parking lot bus stop change.



Feedback methods – how people shared their opinions

Online survey

During the outreach period (May 22-June 15, 2015), 41 people completed the online survey (see Appendix).

Route 200

Welcome to Metro's Route 200 survey

Metro Route 200 in Issaquah to change service area in June, extend to Issaquah Highlands
Additional route adjustments proposed for 2016 – comment today

Phase 1 change
On June 8, Route 200 will be extended to the Issaquah Highlands Park-and-Ride. Loops directly stopping in the Fred Meyer parking lot and in front of some businesses will be eliminated.

Phase 2 proposal
Pending community input and King County Council approval, Route 200 could see additional changes in March 2016. Metro's current proposal for next year is to extend the route to Swedish Medical Center Issaquah, paired with the deletion of the current route where it travels near Issaquah High School.

Please take a few moments to share your thoughts via this survey. Metro service planners are interested in how you feel these changes will affect how your use of transit. If you have questions or need an alternate format of this survey, please contact 206-263-9768 or email haveasay@kingcounty.gov. Thank you.

Next

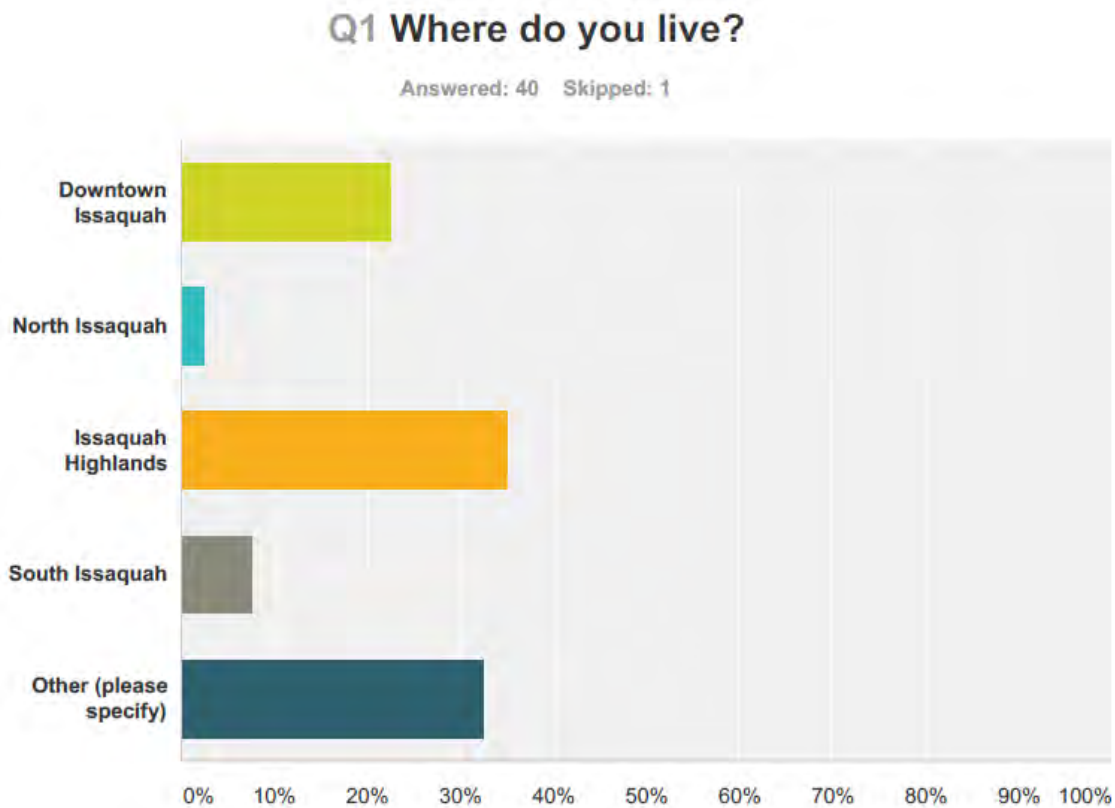
In-person conversations with riders

A Metro staff member rode Route 200 to survey riders and share informational fliers. He connected directly with 13 people.

Online survey results

Who we heard from and where they go

We first asked survey respondents what communities they live in. Their responses are charted below.



Of those choosing the “Other” category, two respondents each told us they live in West Issaquah, Klahanie, Front Street South, and Sammamish, and one each listed Phinney Ridge, Squak Mountain, Issaquah Pine Lake Road, Mercer Island, and Carnation.

Almost 70 percent of respondents said they currently ride Route 200:

Answer Choices	Responses
Downtown Issaquah	22.50% 9
North Issaquah	2.50% 1
Issaquah Highlands	35.00% 14
South Issaquah	7.50% 3
Other (please specify)	32.50% 13
Total	40

Reasons for travel were varied, with the most people choosing “shopping and errands” or “transfers to other bus routes.” The survey allowed multiple answers to this question.

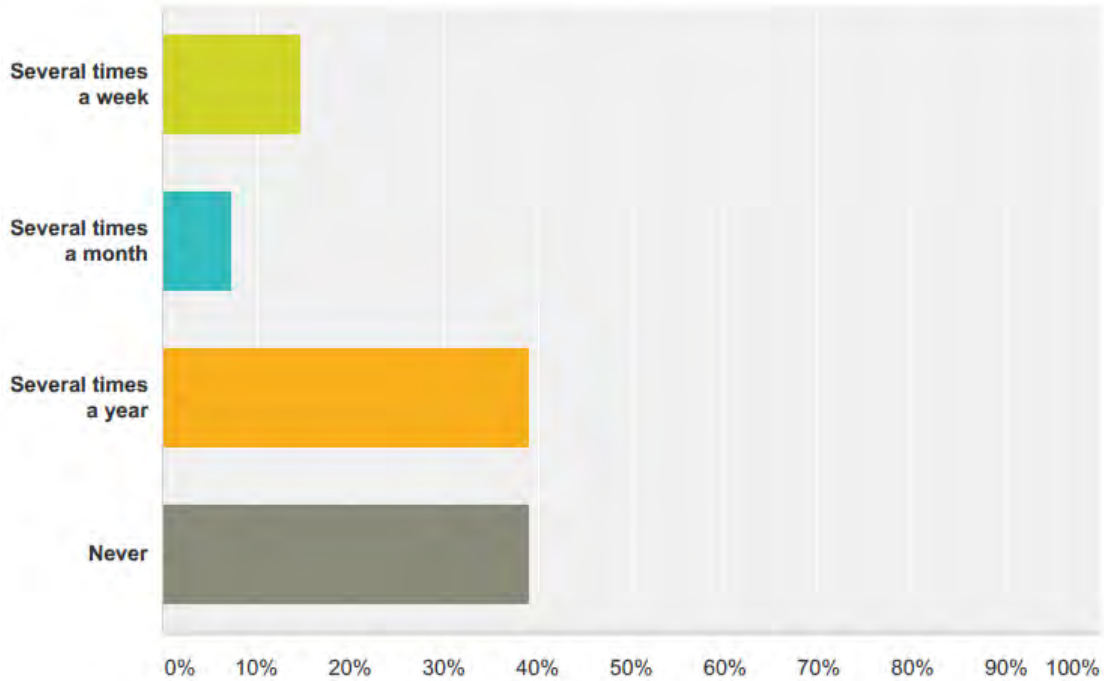
Answer Choices	Responses	
work	15.63%	5
school	3.13%	1
shopping and errands	75.00%	24
church	3.13%	1
recreational activities and fun	25.00%	8
medical appointments	18.75%	6
transfers to other bus routes	46.88%	15
Other (please specify)	6.25%	2
Total Respondents: 32		

When asked about their most common destinations when riding Route 200, many respondents mentioned Fred Meyer (13), the Issaquah Transit Center (6), Target (5), Trader Joe’s (3), and downtown/Front Street (3). It may be worth noting that Siemens and Issaquah High School, which are both proposed to lose adjacent stops, were listed as common destinations by one respondent for each.

In addition to general trip purposes and destinations, we asked people how often they currently visit Swedish Medical Center Issaquah, since the proposed route extension would take riders there directly. The chart below summarizes their responses (25 respondents said they currently go to Swedish, while 16 said they never do).

Q5 How often do you go to Swedish Medical Center Issaquah?

Answered: 41 Skipped: 0



Responses about changes to Route 200

First, we asked a question about the service change that went into effect June 8 (Phase 1). Then we asked questions about the proposed changes for March 2016 (Phase 2) and provided alternatives with maps so respondents could understand where the route was changing and tell us their preferences.

Phase 1 route changes

On June 8, Metro revised Route 200 by eliminating two loops of travel to the north and south of SE Black Nugget Road (in the Fred Meyer and Siemens business park areas). This accommodated the extension of the route to the Issaquah Highlands Park-and-Ride. We detailed this change and then asked how it would affect the respondent’s transit use.

Answer Choices	Responses	Count
I will use transit more	45.00%	18
I will use transit the same	27.50%	11
I will use transit less	15.00%	6
I don't know	12.50%	5
Total		40

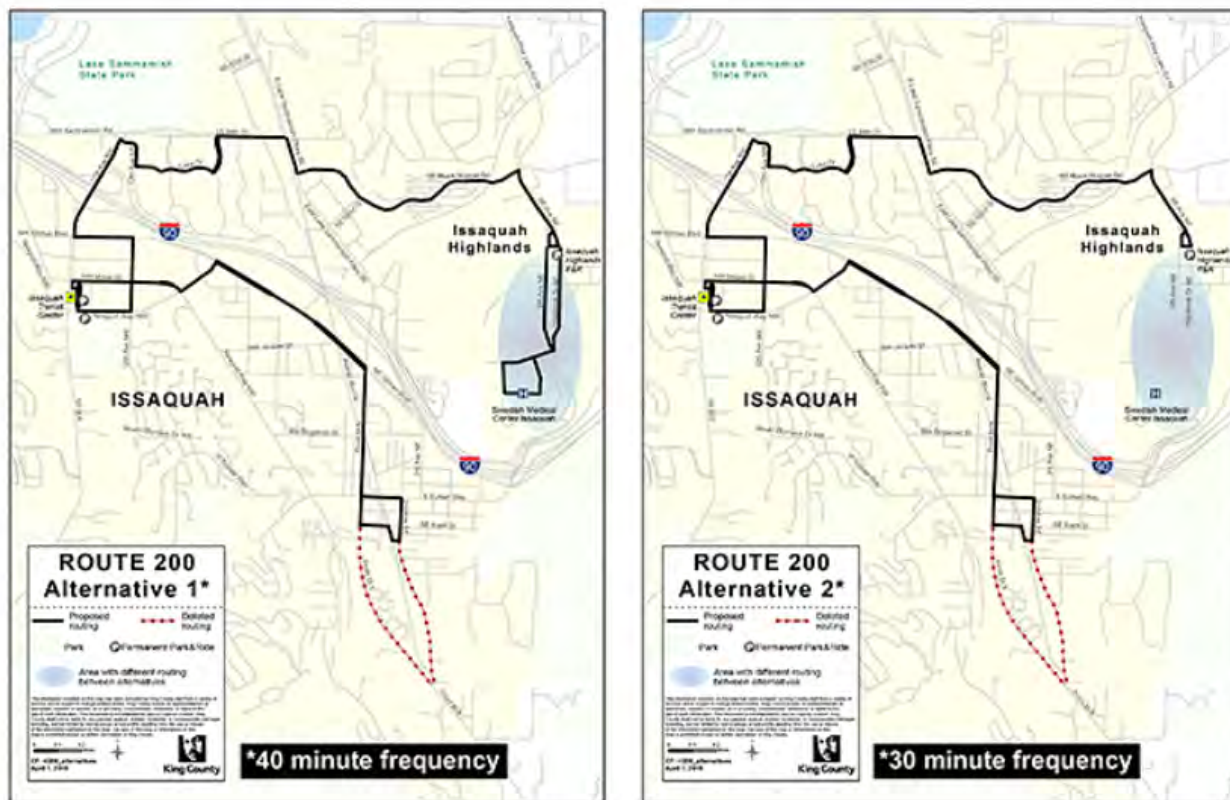
A plurality of respondents (45 percent) said this change will help them use transit more. Six said they would ride less. One of the six uses the bus to go to Siemens, and most are infrequent riders or don't live in Issaquah.

Phase 2 route proposals

To introduce people to the Phase 2 proposals for March 2016, we included maps showing Alternatives 1 and 2:

Phase II route changes proposed for 2016 - Alternatives 1 and 2

Proposed Alternatives 1 and 2: Please see the [alternatives map](#) for the March 2016 proposal below. Alternative 1 extends Route 200 to Swedish Medical Center Issaquah and keeps 40-minute frequency. Alternative 2 ends at the Issaquah Highlands Park-and-Ride and improves to 30-minute frequency. Both alternatives would delete the Issaquah High School loop on Front Street and Second Avenue.



Our first question about the proposal was: “In March 2016, the Route 200 is proposed to be extended to Swedish Medical Center Issaquah in Metro’s Alternative 1. How would this change affect your use of transit?” Responses are summarized in the chart below.

Answer Choices	Responses	
I would use transit more	48.65%	18
I would use transit the same	21.62%	8
I would use transit less	16.22%	6
I don't know	13.51%	5
Total		37

Eighteen of the 37 people who responded to this question said the proposed changes in Alternative 1 would cause them to ride the bus more.

Our second question addressed eliminating service near the high school: “In March 2016, the current route where it travels south of SE Bush Street near Issaquah High School would be eliminated to keep the proposal cost-neutral in Alternative 2. How would this change affect your use of transit?”

The response to this question was more neutral, with 49 percent of respondents saying this specific change wouldn’t alter their transit use:

Answer Choices	Responses	
I would use transit more	18.92%	7
I would use transit the same	48.65%	18
I would use transit less	16.22%	6
I don't know	16.22%	6
Total		37

Our third question compared the two alternatives, providing details to help respondents understand the tradeoffs. The following chart summarizes responses to the question of which alternative (1 or 2) the respondent prefers.

Answer Choices	Responses	
Alternative 1 – extend to Swedish Medical Center Issaquah with 40-minute frequency	48.65%	18
Alternative 2 – end at Issaquah Highlands Park-and-Ride with 30-minute frequency	24.32%	9
Neither – do not eliminate the Issaquah High School loop	10.81%	4
I don't know	16.22%	6
Total		37

Forty-nine percent of respondents said they preferred Alternative 1, 24 percent chose Alternative 2, and 11 percent said they preferred neither alternative.

In the last survey question, we again outlined the tradeoffs in the Phase 2 proposal and asked respondents to share their feedback in their own words.

Comments favoring the proposed changes included the following points:

- It's a good idea to go to Swedish.
- Removing the southwest loop by the high school would make the route more efficient for a lot of riders.
- Service to Issaquah Highlands is appreciated.
- The changes will reduce the need to drive to Swedish or pay Sound Transit fares to get there.

Comments expressing concerns about the proposal included the following points:

- Hating to see any part of the route eliminated.
- Metro should use NW Sammamish Road instead of going through Pickering Place in order to improve travel speed.
- High school students in Issaquah Highlands would appreciate keeping service to the high school, especially since parking has been reduced at school.
- Removal of the southwest loop by the high school would eliminate the only transit service to Andrew's Arms, an apartment building on Front Street S for low-income, elderly residents.
- Metro should keep easy-to-understand headways, such as every 30 minutes.

Other feedback included the following suggestions and comments:

- Add more hours in the morning for added trips and more time to transfer.
- Add more hours in the evening.
- Add service on weekends.
- Improve frequency of trips.
- Bring service to Newport Way NW, since Route 210 has been deleted.
- Create a circular route via Highlands Drive NE to E Sunset Way. Have two buses traveling in opposite directions to serve this route.
- The rush hour schedule change doesn't work for me.
- Bring service to Issaquah-Pine Lake Road SE to meet growing demand.
- The Issaquah Highlands Park-and-Ride is full and routes 216, 218, and 219 leave passengers stranded. Focus on adding service to those routes.

What we heard while riding the bus

On June 1, a Metro staff member rode Route 200 and spoke with riders about the upcoming changes.

After introducing himself and getting a rider's permission, the staff member sat nearby, gave the rider a flier, and explained what was happening to the route in June 2015 and the proposal for March 2016, and then asked questions similar to those in the online survey. The chart below lists the responses of the five riders who spoke with him and stayed on the bus long enough to answer survey questions.

Rider	1	2	3	4	5
Where do you live?	South Issaquah	Downtown Issaquah	Seattle	Downtown Issaquah	
How often do you ride Rt 200?	5/week	3+/week	7/week	1-2/week	
Where are you going?	Work, school	Work, shopping, doctor	Work, shopping, fun	Work	
What transfer routes do you ride?	271	271, 214			
What's your most common destination?	QFC	Fred Meyer	Issaquah Transit Center	PCC	
How often do you go to Swedish Medical Center Issaquah?	Never	Never	Never	Never	
Phase 1 adding Highlands P&R: How will it affect your use of transit?	Same	Same	More	Same	
Phase 2 adding Swedish: How will it affect your use of transit?	Same	Same	Same	Same	
Phase 2 deleting high school: How will it affect your use of transit?	Same	Same	Same	Same	Less
Do you prefer Alternative 1 or 2?	Alt 2	Alt 2		Alt 2	Neither

In addition to these five responses, the staff member connected with eight additional riders—for a total of 13 engagements—to raise awareness of upcoming route changes via the flier and to ask them to fill out an online survey.

In the course of this outreach aboard Route 200, the following themes were commonly heard from riders:

- Canceling early morning service presented a hardship. One person had to walk in the mornings from the Issaquah Transit Center to the King County Library System service center on Newport Way NW.

- Metro needs to provide service on Issaquah-Fall City Road.
- People need Route 200 to have more hours of operation, especially evening runs later than offered today, so people can get around after work.
- My driver is really nice.

Appendix 1: Notifications and feedback

Public email

Sent: Friday, June 12, 2015 3:34 PM

To: Anderson, Dan-DOT

Subject: Route 200

Dan:

I am responding regarding the changes on Rt. 200. Phase 1 is really appreciated and we who ride the bus, think it's a very good change. We would like to suggest, however, that Metro add couple of hours in the morning on this route....many riders need to get to the Transit Center Issaquah, to transfer to other buses to get to work. Also, many need to go to appointments and this would really help - This route use to run about 12 hours on the old schedule, so we feel that adding 2 hours is not going to be an expense.

As for Phase 2, we don't think it's that important for the bus to go to Swedish Hospital, since it already goes to the Highlands Park & Ride, but it will probably help some. What we are very glad about is the deletion made on the bus going on 2nd Ave to the High School, this will really help us and give us more time. We appreciate any help you can give us. It will give the bus a better schedule..

Thanks again, and please reply.

Metro online

Route 200 in Issaquah to change service area in June, extend to Highlands



Additional route adjustments proposed for 2016 – [comment today](#)

Phase 1 change

On June 8, Route 200 will be extended to the Issaquah Highlands Park-and-Ride via SE Black Nugget Road and Highlands Drive NE to improve rider demand and route performance. This new routing means riders will have a connection between the Issaquah Transit Center, downtown and north Issaquah, and the Issaquah Highlands.

To extend the route without requiring additional revenue, two portions will be affected:

- The 220th Avenue SE, SE 51st Street and East Lake Sammamish Parkway SE loop north of SE 56th Street, which serves Microsoft, Siemens, Federal Express and other offices, will be discontinued.
- The Fred Meyer and Home Depot loop on East Lake Sammamish Parkway SE and SE 62nd Street also will be discontinued. Riders will soon catch the Route 200 on SE Black Nugget Road north of the shopping area instead of boarding in the Fred Meyer parking lot.

Phase 2 proposal

Pending community input and King County Council approval, Route 200 could see additional changes in March 2016. Metro's current proposal for next year is to extend the route to Swedish Medical Center Issaquah and get more people where they want to go by serving more areas with growing need and ridership.

The proposed extension would be paired with the deletion of the current route where it travels south of SE Bush Street near Issaquah High School. Segments with inefficient routing or low ridership would be eliminated to keep the changes cost-neutral.

Tell us what you think

We want to hear from you. What do you think about the 2016 proposed extension of Route 200 to Swedish Medical Center Issaquah?



[Take our survey](#)

Questions or comments?

Dan Anderson
 Community Relations Planner
[Send an email](#) or call 206-477-3690

Phase 1 – Happening in June



Phase 2 – Proposed for March 2016



We'll Get You There





Other route revisions and changes

4	8	48	64E	73	111	114	118	119	167	200
238	245	246	3	Effective June 6, 2015						

Route 200
Route 200 will be extended to the Issaquah Highlands P&R via SE Black Nugget Rd and Highlands Drive NE. Route 200 will no longer serve Microsoft or Siemens offices on SE 51st St and Fred Meyer at East Lake Sammamish Parkway SE & SE 62nd St.
Route 200 will serve Bay 1 at the Issaquah Highlands P&R

New routes

Social media

City of Issaquah @cityofissaquah
ICYMI: Starting next month, @kcmetrobus extends Issaquah's Route 200 to include @IssHighlands. bit.ly/1HUHZsc
11:10 AM - 29 May 2015

Issaquah Highlands @IssHighlands - May 29
Get on the bus!
City of Issaquah @cityofissaquah
ICYMI: Starting next month, @kcmetrobus extends Issaquah's Route 200 to include @IssHighlands. bit.ly/1HUHZsc
11:15 AM - 29 May 2015 - Details



King County Metro @kcmetrobus
Survey: Route 200 extends service to @IssHighlands starting Monday. Tell us what you think 1.usa.gov/1FUIWmN #Issaquah
RETWEETS 3 FAVORITES 2
2:07 PM - 2 Jun 2015



 **City of Issaquah**
June 8 at 7:00pm · 🌐

Issaquah's free Route 200 bus now extends to Issaquah Highlands! The route connects riders to the Issaquah Transit Center, downtown and North Issaquah, as well as the highlands. Thanks, King County Metro Transit!




Route 200: Service Extended to Issaquah Highlands ✓
Service is via Southeast Black Nugget Road and Highlands Drive Northeast.
ISSAQUAHWA.GOV


Like · Comment · Share

👍 Ilse Om, Jess Lauren, Lisa Valdez and 68 others like this. Top Comments -

🔄 12 shares

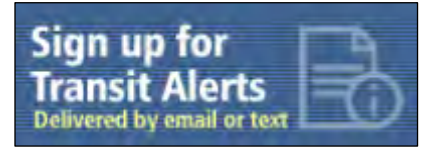
 **Lisa Valdez** That took a long time!
June 9 at 10:58pm

 **Shirley Phinney** It would be nice if Newcastle was as accomadating to its citizens.
June 9 at 8:49pm

 **Ray Albrecht** Now if only ridership would increase! Too many people along Gilman go driving from parking lot to parking lot, and even drive across parking lots to go to another store! Unbelievable!!!
👍 1 · June 9 at 11:37am

Transit alert

The following bulletin was sent to subscribers of routes 200, 214, 216, 218, 219, 269, and ST 554 (5,316 recipients):



Route 200 in Issaquah to change service area in June, extend to Highlands

Additional route adjustments proposed for 2016 – [comment today](#)

Route 200 service in Issaquah is going to change June 8 to accommodate the route extending to the Issaquah Highlands Park-and-Ride. The stop in the Fred Meyer parking lot and access to some employers will be altered.

In addition, Metro is proposing further changes to the Route 200 that would begin in March 2016.

[Learn more](#) about the change happening next month and the proposal for 2016, and take our [survey](#). Thank you for riding Metro and for your helpful feedback as we work to improve service.

 SHARE



We'll Get You There

www.kingcounty.gov/metro

Manage your subscriptions:

- Update your [preferences or unsubscribe](#)
- Questions about this service? Visit subscriberhelp.govdelivery.com

Appendix 2: Media coverage

Life Without a Car in the ‘Burbs

by Nina Milligan, Editor, Resident Crofton Springs



Nearly 25% of Issaquah Highlands could be considered Transit Oriented Development (TOD). Virtually everything built west of 10th Ave NE is TOD. It may sound a little crazy to the suburban ear, but really it’s very popular these days, even in the suburbs.

Definition of TOD: The creation of compact, walkable communities consisting of housing, retail and office “oriented” around transit opportunities. Residents of TOD can thrive without owning a car.

Why Ride a Bus?

Many of you ride a bus to work or school. Even more of you take the bus to football games and other large public events. Riding the bus can save time and always saves money. It can even reduce stress. The bus is a logical consideration for traveling into Seattle.

Local Freebie Route 200 Comes to the IH P&R in June



But have you considered riding the bus to go shopping or to the gym? Starting in June Metro Transit will bring the local Freebie bus that shuttles riders all around the city of Issaquah, to the Issaquah Highlands. See from the map how the Route 200 can take you to Fred Meyer and Best Buy, to PCC and Jenny Pho, within striking distance of Top Pot Doughnuts and Target. The Route 200 will take you all the way to Old Town, if you like.

Route 200 is fondly called “Freebie” because the City of Issaquah picks up the tab. Last fall the City Council renewed its annual financial support for Route 200 by budgeting once again to pay what’s called the farebox. Riders ride for free!

The Freebie is a midday bus, running weekdays only from 9:45am to 3:30pm, perfect for shopping,

downtown doctor’s visits, lunch at Gilman Village, a trip to the Post Office, whatever!

In order to include the IH P&R in the route, a couple of short spurs were eliminated. The route will no longer extend out to 51st Street and E. Lake Sammamish Parkway. The stop is now on NW Sammamish Road/56th. If you ride the 200 to your work at Microsoft or Siemens you will now have a little walk. But if you live in Issaquah Highlands, you now can pick up the bus at our P&R! Route 200 will also no longer drive through the parking lot at Fred Meyer. Riders there will use the stops along Black Nugget Road.

In March 2016 the Freebie gets even better! Pending approval, the route will include a run down to Swedish Hospital from the IH P&R.

The county is working on a community survey and adding resources to its website. Visit www.kingcounty.gov/hasaysay (Route 200) or email hasaysay@kingcounty.gov and “Have your say!”



Did You Know?

There’s more! Did you know our IH P&R provides all of the following:

- 12 Electric Vehicle Spaces (240V Level 2 stations)
- 4 Bike Lockers
- 8 On-Demand Bike eLockers
- Bike Racks
- Metro: 216, 218, 219 to Downtown Seattle
- Metro 269 to Bellevue/Overlake
- Metro 628 to North Bend/Snoqualmie
- Metro 628 pick up along Park Drive, Swedish
- Sound Transit: 554 to Downtown Seattle
- Sound Transit: 555, 556 to Northgate
- RRFPP Senior citizens and persons with disabilities may ride the bus, train or ferry at a reduced rate with a valid Regional Reduced Fare Permit (RRFP) ORCA card.

Did you also know the lot is usually filled 90% or above by 9:00am on weekdays? If you can walk to pick up your bus, that’s a great option.





Route 200 Freebee bus to change service area, extend to Highlands

June 3, 2015 By Staff

On June 8, the Route 200 Freebee bus will be extended to the Issaquah Highlands Park & Ride via Southeast Black Nugget Road and Highlands Drive Northeast to improve rider demand and route performance.

The new routing means riders will have a connection between the Issaquah Transit Center, downtown and north Issaquah, and the Issaquah Highlands, King County Metro said in a news release.

To extend the route without requiring additional revenue, two portions will be affected:

- The 220th Avenue Southeast, Southeast 51st Street and East Lake Sammamish Parkway Southeast loop north of Southeast 56th Street, which serves Microsoft, Siemens, Federal Express and other offices, will be discontinued.
- The Fred Meyer and Home Depot loop on East Lake Sammamish Parkway Southeast and Southeast 62nd Street also will be discontinued. Riders will soon catch the Route 200 on Southeast Black Nugget Road north of the shopping area instead of boarding in the Fred Meyer parking lot.

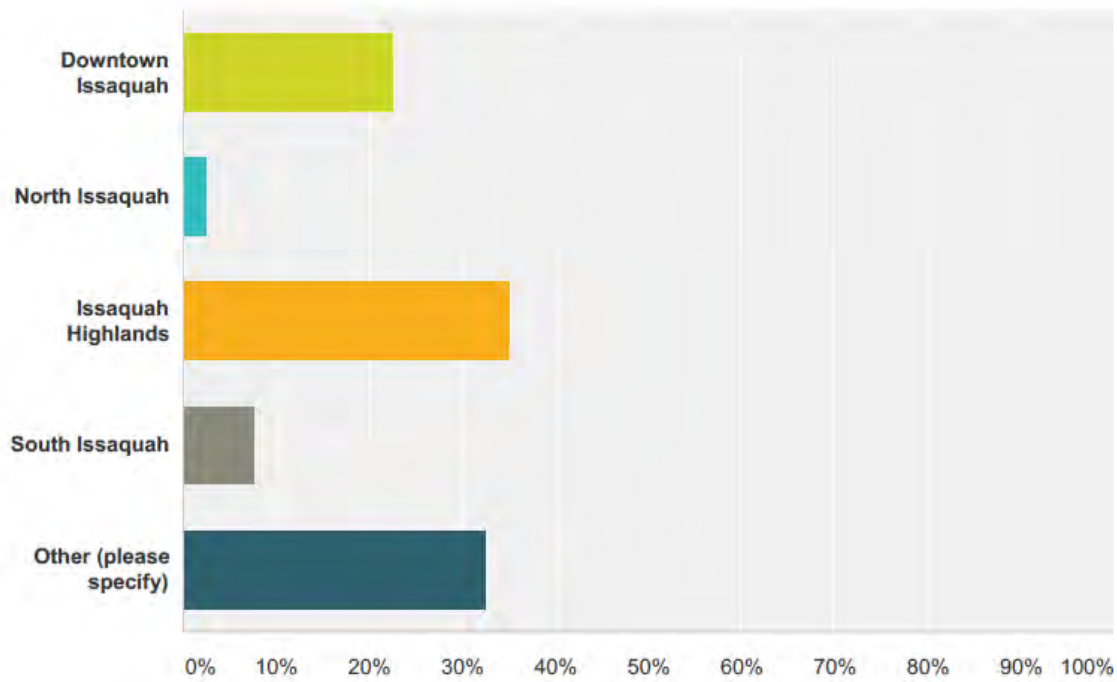
Pending community input and King County Council approval, Route 200 could see additional changes in March 2016. Metro's current proposal for next year is to extend the route to Swedish Medical Center Issaquah and get more people where they want to go by serving more areas with growing need and ridership.

The proposed extension would be paired with the deletion of the current route where it travels south of Southeast Bush Street near Issaquah High School. Segments with inefficient routing or low ridership would be eliminated to keep the changes cost-neutral.

Appendix 3: Survey questions and response summaries

Q1 Where do you live?

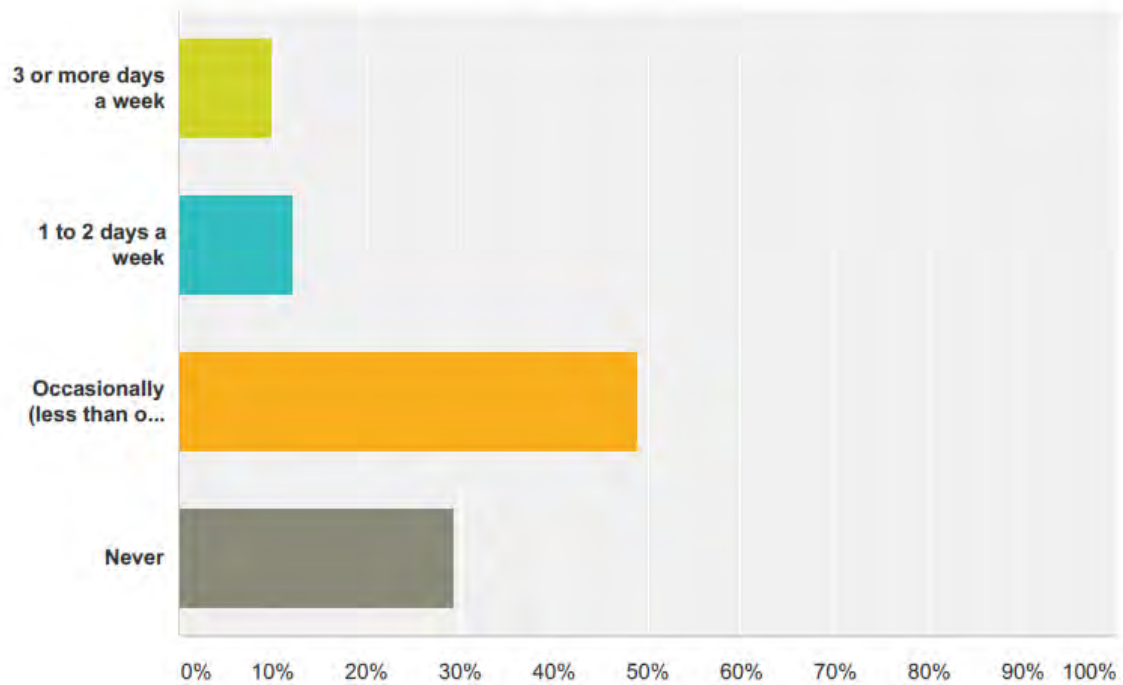
Answered: 40 Skipped: 1



Answer Choices	Responses
Downtown Issaquah	22.50% 9
North Issaquah	2.50% 1
Issaquah Highlands	35.00% 14
South Issaquah	7.50% 3
Other (please specify)	32.50% 13
Total	40

Q2 How often do you use the Route 200?

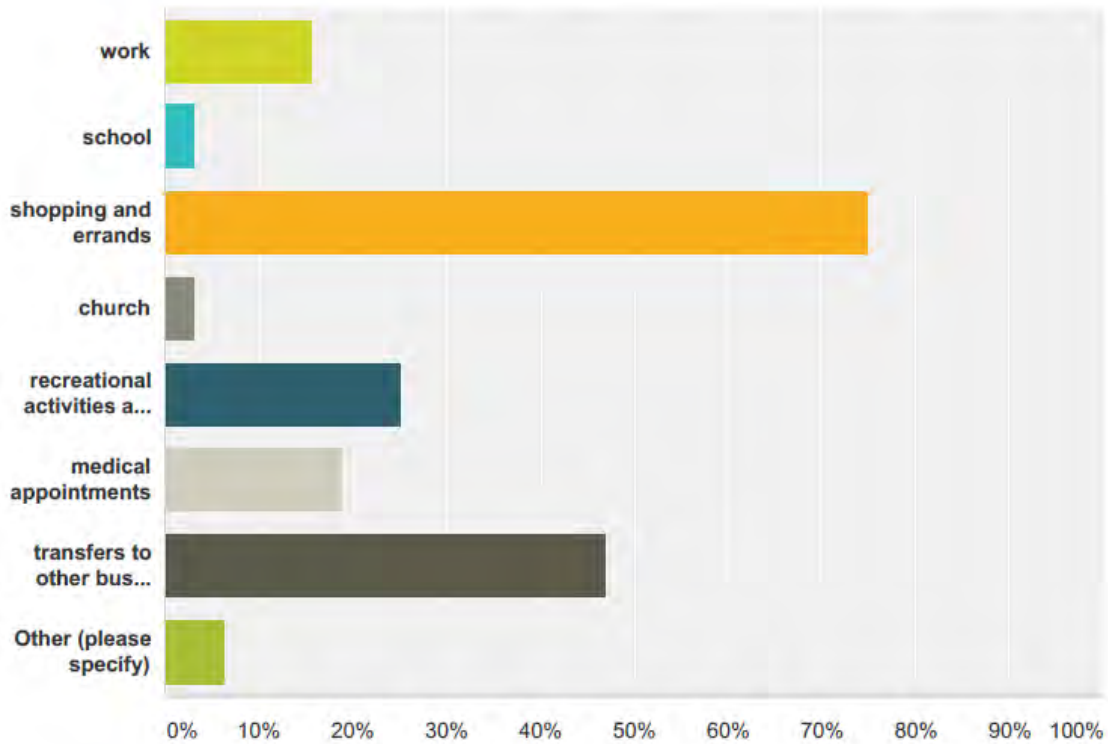
Answered: 41 Skipped: 0



Answer Choices	Responses
3 or more days a week	9.76% 4
1 to 2 days a week	12.20% 5
Occasionally (less than once a week)	48.78% 20
Never	29.27% 12
Total	41

Q3 For what purpose to you typically use the Route 200? To get to/from ...

Answered: 32 Skipped: 9



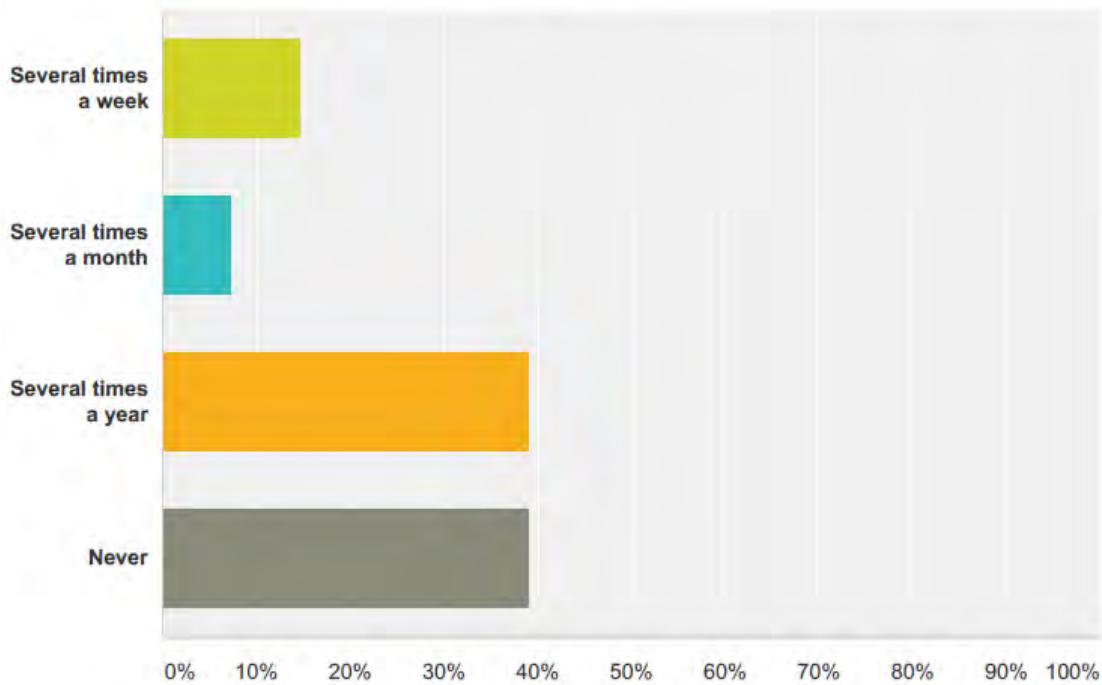
Answer Choices	Responses
work	15.63% 5
school	3.13% 1
shopping and errands	75.00% 24
church	3.13% 1
recreational activities and fun	25.00% 8
medical appointments	18.75% 6
transfers to other bus routes	46.88% 15
Other (please specify)	6.25% 2
Total Respondents: 32	

**Q4 What is your most common destination?
 Examples include Fred Meyer, Issaquah
 Transit Center, Siemens, Issaquah High
 School, etc.**

Answered: 29 Skipped: 12

**Q5 How often do you go to Swedish Medical
 Center Issaquah?**

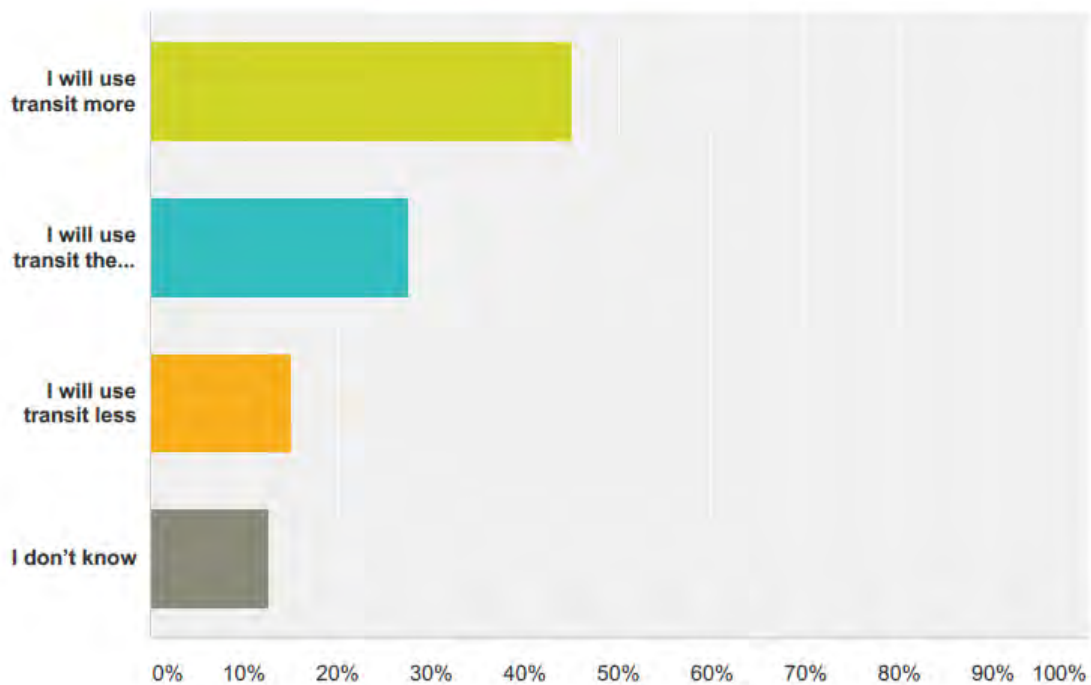
Answered: 41 Skipped: 0



Answer Choices	Responses
Several times a week	14.63% 6
Several times a month	7.32% 3
Several times a year	39.02% 16
Never	39.02% 16
Total	41

Q6 On June 8, Route 200 will be extended to the Issaquah Highlands Park-and-Ride via SE Black Nugget Road and Highlands Drive NE to improve rider demand and route performance. This new routing means riders will have a connection between the Issaquah Transit Center, downtown and north Issaquah, and the Issaquah Highlands. To extend the route without requiring additional revenue, two portions will be affected:- The 220th Avenue SE, SE 51st Street and East Lake Sammamish Parkway SE loop north of SE 56th Street, which serves Microsoft, Siemens, Federal Express and other offices, will be discontinued.- The Fred Meyer and Home Depot loop on East Lake Sammamish Parkway SE and SE 62nd Street also will be discontinued. Riders will soon catch the Route 200 on SE Black Nugget Road north of the shopping area instead of boarding in the Fred Meyer parking lot. How will this affect your use of transit?

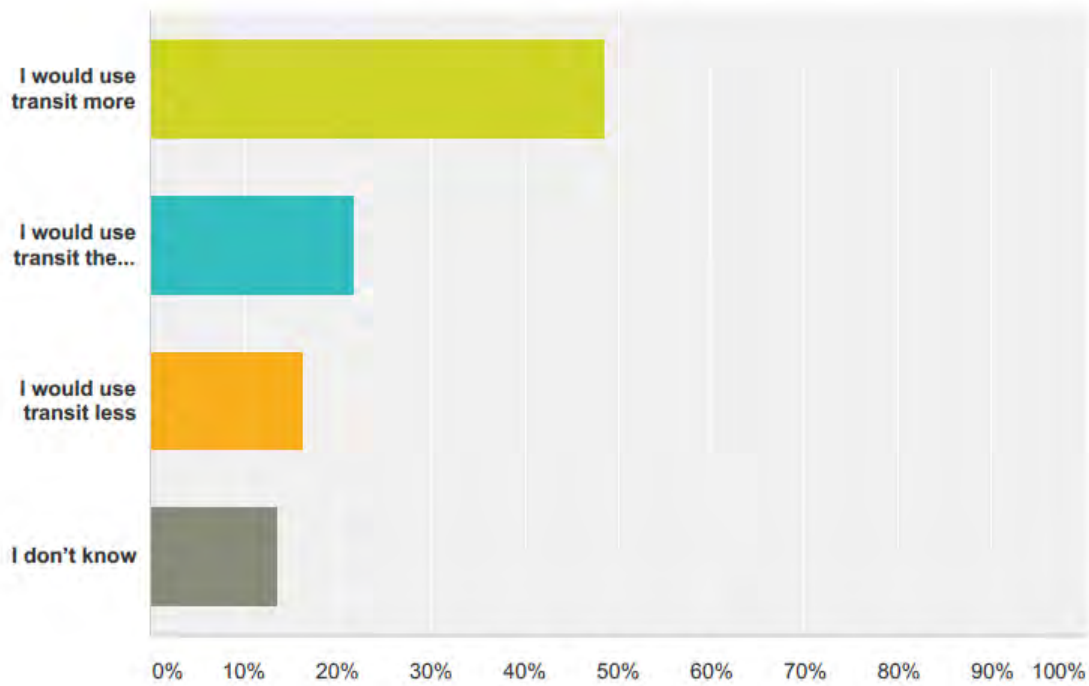
Answered: 40 Skipped: 1



Answer Choices	Responses
I will use transit more	45.00% 18
I will use transit the same	27.50% 11
I will use transit less	15.00% 6
I don't know	12.50% 5
Total	40

Q7 In March 2016, the Route 200 is proposed to be extended to Swedish Medical Center Issaquah in Metro's Alternative 1. How would this change affect your use of transit?

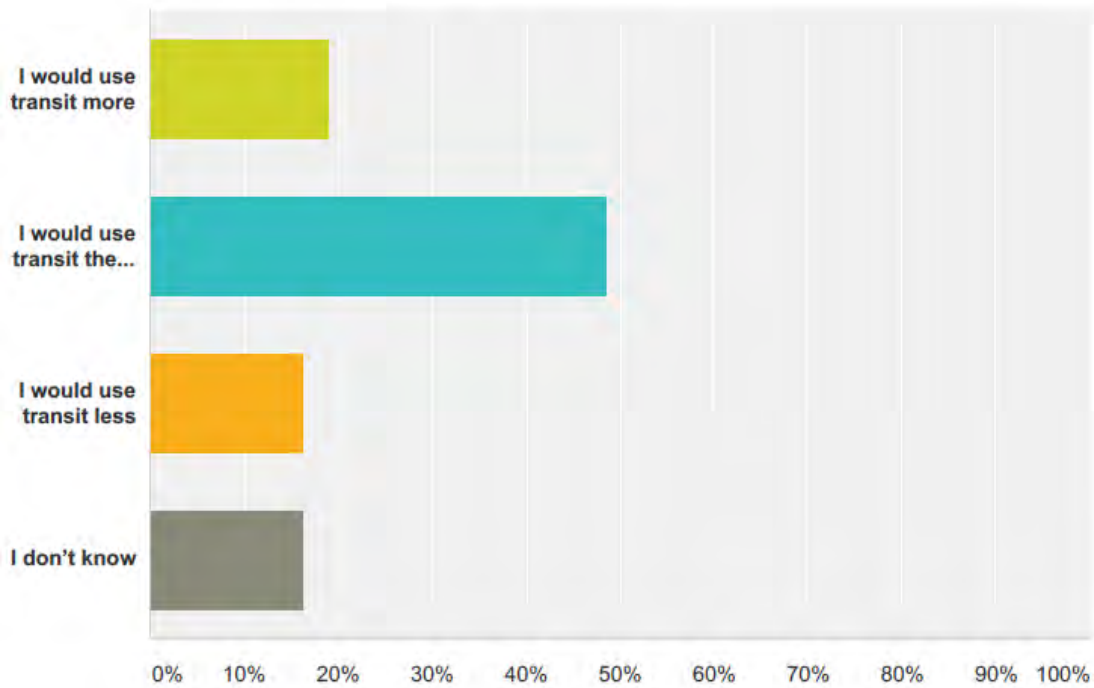
Answered: 37 Skipped: 4



Answer Choices	Responses
I would use transit more	48.65% 18
I would use transit the same	21.62% 8
I would use transit less	16.22% 6
I don't know	13.51% 5
Total	37

Q8 In March 2016, the current route where it travels south of SE Bush Street near Issaquah High School would be eliminated to keep the proposal cost-neutral in Alternative 2. How would this change affect your use of transit?

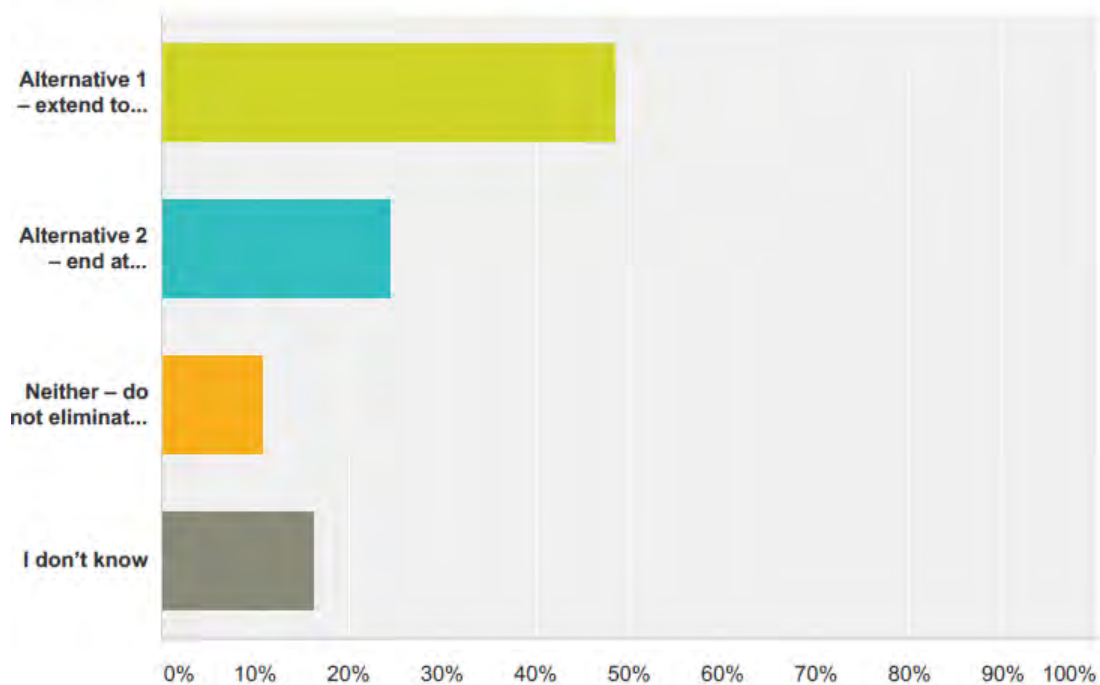
Answered: 37 Skipped: 4



Answer Choices	Responses	
I would use transit more	18.92%	7
I would use transit the same	48.65%	18
I would use transit less	16.22%	6
I don't know	16.22%	6
Total		37

Q9 Do you prefer Alternative 1 or 2?

Answered: 37 Skipped: 4



Answer Choices	Responses
Alternative 1 – extend to Swedish Medical Center Issaquah with 40-minute frequency	48.65% 18
Alternative 2 – end at Issaquah Highlands Park-and-Ride with 30-minute frequency	24.32% 9
Neither – do not eliminate the Issaquah High School loop	10.81% 4
I don't know	16.22% 6
Total	37

Q10 Please share any additional feedback you have about the Route 200 changes proposed for March 2016, where service would be extended past the Issaquah Highlands Park-and-Ride to Swedish Medical Center Issaquah, and service at the far southwest end of the route near Issaquah High School would be eliminated.

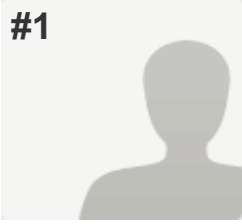
Answered: 21 Skipped: 20

Q11 Thank you for taking the time to complete this survey. If you share your email address as a way to stay informed, we'll subscribe you to the Metro Matters email list. Please enter your email address here.

Answered: 17 Skipped: 24

Appendix 4: All survey responses

The following pages list all survey responses in their entirety.

<p>#1</p> 	<p>COMPLETE</p> <p>Collector: Web Link 1 (Web Link) Started: Friday, May 22, 2015 5:30:39 PM Last Modified: Friday, May 22, 2015 5:34:14 PM Time Spent: 00:03:34 IP Address: 166.176.184.182</p>
--	--

PAGE 2: General travel information


Q1: Where do you live?	South Issaquah
Q2: How often do you use the Route 200?	Occasionally (less than once a week)
Q3: For what purpose to you typically use the Route 200? To get to/from ...	work, shopping and errands, medical appointments
Q4: What is your most common destination? Examples include Fred Meyer, Issaquah Transit Center, Siemens, Issaquah High School, etc.	Issaquah Transit Center (for South Lake Union) and Costco
Q5: How often do you go to Swedish Medical Center Issaquah?	Several times a month

PAGE 3: Phase I route changes happening June 8

Q6: On June 8, Route 200 will be extended to the Issaquah Highlands Park-and-Ride via SE Black Nugget Road and Highlands Drive NE to improve rider demand and route performance. This new routing means riders will have a connection between the Issaquah Transit Center, downtown and north Issaquah, and the Issaquah Highlands. To extend the route without requiring additional revenue, two portions will be affected:- The 220th Avenue SE, SE 51st Street and East Lake Sammamish Parkway SE loop north of SE 56th Street, which serves Microsoft, Siemens, Federal Express and other offices, will be discontinued.- The Fred Meyer and Home Depot loop on East Lake Sammamish Parkway SE and SE 62nd Street also will be discontinued. Riders will soon catch the Route 200 on SE Black Nugget Road north of the shopping area instead of boarding in the Fred Meyer parking lot. How will this affect your use of transit?	I will use transit more
--	-------------------------

PAGE 4: Phase II route changes proposed for 2016 - Alternatives 1 and 2

<p>Q7: In March 2016, the Route 200 is proposed to be extended to Swedish Medical Center Issaquah in Metro's Alternative 1. How would this change affect your use of transit?</p>	<p>I would use transit more</p>
<p>Q8: In March 2016, the current route where it travels south of SE Bush Street near Issaquah High School would be eliminated to keep the proposal cost-neutral in Alternative 2. How would this change affect your use of transit?</p>	<p>I would use transit more</p>
<p>Q9: Do you prefer Alternative 1 or 2?</p>	<p>Alternative 1 – extend to Swedish Medical Center Issaquah with 40-minute frequency</p>
<p>Q10: Please share any additional feedback you have about the Route 200 changes proposed for March 2016, where service would be extended past the Issaquah Highlands Park-and-Ride to Swedish Medical Center Issaquah, and service at the far southwest end of the route near Issaquah High School would be eliminated.</p>	
<p>What is the status on extending serve to Talus and further into Issaquah Highlands? Will additional trips be added at shoulder peaks to cover long gaps between 214/269 service and 200 service in the midday?</p>	
<p>Q11: Thank you for taking the time to complete this survey. If you share your email address as a way to stay informed, we'll subscribe you to the Metro Matters email list. Please enter your email address here.</p>	<p><i>Respondent skipped this question</i></p>

<p>#2</p>		<p>COMPLETE</p>	<p>Collector: Web Link 1 (Web Link) Started: Wednesday, May 27, 2015 4:15:14 PM Last Modified: Wednesday, May 27, 2015 4:16:50 PM Time Spent: 00:01:35 IP Address: 172.56.33.71</p>
-----------	---	------------------------	--

PAGE 2: General travel information

<p>Q1: Where do you live?</p>	<p>Other (please specify) carnation</p>
<p>Q2: How often do you use the Route 200?</p>	<p>Occasionally (less than once a week)</p>

Route 200

Q3: For what purpose to you typically use the Route 200? To get to/from ... shopping and errands,
recreational activities and fun

Q4: What is your most common destination? Examples include Fred Meyer, Issaquah Transit Center, Siemens, Issaquah High School, etc.

Front Street and Gilman areas

Q5: How often do you go to Swedish Medical Center Issaquah? Never

PAGE 3: Phase I route changes happening June 8

Q6: On June 8, Route 200 will be extended to the Issaquah Highlands Park-and-Ride via SE Black Nugget Road and Highlands Drive NE to improve rider demand and route performance. This new routing means riders will have a connection between the Issaquah Transit Center, downtown and north Issaquah, and the Issaquah Highlands. To extend the route without requiring additional revenue, two portions will be affected:- The 220th Avenue SE, SE 51st Street and East Lake Sammamish Parkway SE loop north of SE 56th Street, which serves Microsoft, Siemens, Federal Express and other offices, will be discontinued.- The Fred Meyer and Home Depot loop on East Lake Sammamish Parkway SE and SE 62nd Street also will be discontinued. Riders will soon catch the Route 200 on SE Black Nugget Road north of the shopping area instead of boarding in the Fred Meyer parking lot. How will this affect your use of transit? I will use transit more

PAGE 4: Phase II route changes proposed for 2016 - Alternatives 1 and 2

Q7: In March 2016, the Route 200 is proposed to be extended to Swedish Medical Center Issaquah in Metro's Alternative 1. How would this change affect your use of transit? I would use transit more

Q8: In March 2016, the current route where it travels south of SE Bush Street near Issaquah High School would be eliminated to keep the proposal cost-neutral in Alternative 2. How would this change affect your use of transit? I would use transit less

Q9: Do you prefer Alternative 1 or 2? Alternative 1 – extend to Swedish Medical Center Issaquah with 40-minute frequency

Route 200

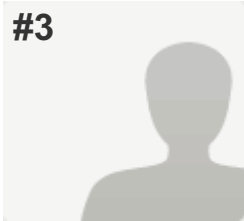
Q10: Please share any additional feedback you have about the Route 200 changes proposed for March 2016, where service would be extended past the Issaquah Highlands Park-and-Ride to Swedish Medical Center Issaquah, and service at the far southwest end of the route near Issaquah High School would be eliminated.

Respondent skipped this question

Q11: Thank you for taking the time to complete this survey. If you share your email address as a way to stay informed, we'll subscribe you to the Metro Matters email list. Please enter your email address here.

Respondent skipped this question

#3



COMPLETE

Collector: Web Link 1 (Web Link)

Started: Wednesday, May 27, 2015 4:14:21 PM

Last Modified: Wednesday, May 27, 2015 4:19:56 PM

Time Spent: 00:05:35

IP Address: 130.76.32.197

PAGE 2: General travel information

Q1: Where do you live?

South Issaquah

Q2: How often do you use the Route 200?

Occasionally (less than once a week)

Q3: For what purpose to you typically use the Route 200? To get to/from ...

transfers to other bus routes,
Other (please specify)
Hike connections to Lake Sammamish Park or the Issaquah P&R.

Q4: What is your most common destination? Examples include Fred Meyer, Issaquah Transit Center, Siemens, Issaquah High School, etc.

Issaquah P&R

Q5: How often do you go to Swedish Medical Center Issaquah?

Several times a year

PAGE 3: Phase I route changes happening June 8

Q6: On June 8, Route 200 will be extended to the Issaquah Highlands Park-and-Ride via SE Black Nugget Road and Highlands Drive NE to improve rider demand and route performance. This new routing means riders will have a connection between the Issaquah Transit Center, downtown and north Issaquah, and the Issaquah Highlands. To extend the route without requiring additional revenue, two portions will be affected:- The 220th Avenue SE, SE 51st Street and East Lake Sammamish Parkway SE loop north of SE 56th Street, which serves Microsoft, Siemens, Federal Express and other offices, will be discontinued.- The Fred Meyer and Home Depot loop on East Lake Sammamish Parkway SE and SE 62nd Street also will be discontinued. Riders will soon catch the Route 200 on SE Black Nugget Road north of the shopping area instead of boarding in the Fred Meyer parking lot. How will this affect your use of transit?

I will use transit the same

PAGE 4: Phase II route changes proposed for 2016 - Alternatives 1 and 2

Q7: In March 2016, the Route 200 is proposed to be extended to Swedish Medical Center Issaquah in Metro's Alternative 1. How would this change affect your use of transit?

I would use transit the same

Q8: In March 2016, the current route where it travels south of SE Bush Street near Issaquah High School would be eliminated to keep the proposal cost-neutral in Alternative 2. How would this change affect your use of transit?

I would use transit the same

Q9: Do you prefer Alternative 1 or 2?

Alternative 1 – extend to Swedish Medical Center Issaquah with 40-minute frequency

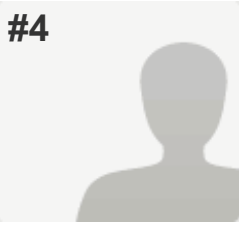
Q10: Please share any additional feedback you have about the Route 200 changes proposed for March 2016, where service would be extended past the Issaquah Highlands Park-and-Ride to Swedish Medical Center Issaquah, and service at the far southwest end of the route near Issaquah High School would be eliminated.

Respondent skipped this question

Q11: Thank you for taking the time to complete this survey. If you share your email address as a way to stay informed, we'll subscribe you to the Metro Matters email list. Please enter your email address here.

bob_whitbeck@yahoo.com

#4

**COMPLETE****Collector:** Web Link 1 (Web Link)**Started:** Wednesday, May 27, 2015 4:18:19 PM**Last Modified:** Wednesday, May 27, 2015 4:21:38 PM**Time Spent:** 00:03:19**IP Address:** 172.56.42.203**PAGE 2: General travel information****Q1: Where do you live?**

Other (please specify) Klahanie

Q2: How often do you use the Route 200?

Occasionally (less than once a week)

Q3: For what purpose to you typically use the Route 200? To get to/from ...shopping and errands,
transfers to other bus routes**Q4: What is your most common destination? Examples include Fred Meyer, Issaquah Transit Center, Siemens, Issaquah High School, etc.**

Issaquah Transit Center to Issaquah Highlands Park and Ride and back

Q5: How often do you go to Swedish Medical Center Issaquah?

Never

PAGE 3: Phase I route changes happening June 8


Q6: On June 8, Route 200 will be extended to the Issaquah Highlands Park-and-Ride via SE Black Nugget Road and Highlands Drive NE to improve rider demand and route performance. This new routing means riders will have a connection between the Issaquah Transit Center, downtown and north Issaquah, and the Issaquah Highlands. To extend the route without requiring additional revenue, two portions will be affected:- The 220th Avenue SE, SE 51st Street and East Lake Sammamish Parkway SE loop north of SE 56th Street, which serves Microsoft, Siemens, Federal Express and other offices, will be discontinued.- The Fred Meyer and Home Depot loop on East Lake Sammamish Parkway SE and SE 62nd Street also will be discontinued. Riders will soon catch the Route 200 on SE Black Nugget Road north of the shopping area instead of boarding in the Fred Meyer parking lot. How will this affect your use of transit?

I will use transit more

PAGE 4: Phase II route changes proposed for 2016 - Alternatives 1 and 2

<p>Q7: In March 2016, the Route 200 is proposed to be extended to Swedish Medical Center Issaquah in Metro's Alternative 1. How would this change affect your use of transit?</p>	<p>I would use transit less</p>
<p>Q8: In March 2016, the current route where it travels south of SE Bush Street near Issaquah High School would be eliminated to keep the proposal cost-neutral in Alternative 2. How would this change affect your use of transit?</p>	<p>I would use transit more</p>
<p>Q9: Do you prefer Alternative 1 or 2?</p>	<p>Alternative 2 – end at Issaquah Highlands Park-and-Ride with 30-minute frequency</p>
<p>Q10: Please share any additional feedback you have about the Route 200 changes proposed for March 2016, where service would be extended past the Issaquah Highlands Park-and-Ride to Swedish Medical Center Issaquah, and service at the far southwest end of the route near Issaquah High School would be eliminated.</p>	
<p>During mid day (non peak) getting between transit centers is an epic journey. I think the more frequent would help and make local shopping more accessible.</p>	
<p>Q11: Thank you for taking the time to complete this survey. If you share your email address as a way to stay informed, we'll subscribe you to the Metro Matters email list. Please enter your email address here.</p>	<p><i>Respondent skipped this question</i></p>

#5



COMPLETE

Collector: Web Link 1 (Web Link)
Started: Wednesday, May 27, 2015 4:20:05 PM
Last Modified: Wednesday, May 27, 2015 4:22:31 PM
Time Spent: 00:02:26
IP Address: 173.160.179.65

PAGE 2: General travel information

<p>Q1: Where do you live?</p>	<p>Issaquah Highlands</p>
<p>Q2: How often do you use the Route 200?</p>	<p>Occasionally (less than once a week)</p>
<p>Q3: For what purpose to you typically use the Route 200? To get to/from ...</p>	<p>shopping and errands</p>

Q4: What is your most common destination? Examples include Fred Meyer, Issaquah Transit Center, Siemens, Issaquah High School, etc.

Fred Meyer

Q5: How often do you go to Swedish Medical Center Issaquah? Several times a month

PAGE 3: Phase I route changes happening June 8

Q6: On June 8, Route 200 will be extended to the Issaquah Highlands Park-and-Ride via SE Black Nugget Road and Highlands Drive NE to improve rider demand and route performance. This new routing means riders will have a connection between the Issaquah Transit Center, downtown and north Issaquah, and the Issaquah Highlands. To extend the route without requiring additional revenue, two portions will be affected:- The 220th Avenue SE, SE 51st Street and East Lake Sammamish Parkway SE loop north of SE 56th Street, which serves Microsoft, Siemens, Federal Express and other offices, will be discontinued.- The Fred Meyer and Home Depot loop on East Lake Sammamish Parkway SE and SE 62nd Street also will be discontinued. Riders will soon catch the Route 200 on SE Black Nugget Road north of the shopping area instead of boarding in the Fred Meyer parking lot. How will this affect your use of transit?

I will use transit more

PAGE 4: Phase II route changes proposed for 2016 - Alternatives 1 and 2

Q7: In March 2016, the Route 200 is proposed to be extended to Swedish Medical Center Issaquah in Metro's Alternative 1. How would this change affect your use of transit?

I would use transit more

Q8: In March 2016, the current route where it travels south of SE Bush Street near Issaquah High School would be eliminated to keep the proposal cost-neutral in Alternative 2. How would this change affect your use of transit?

I would use transit more

Q9: Do you prefer Alternative 1 or 2?

Alternative 1 – extend to Swedish Medical Center Issaquah with 40-minute frequency

Route 200

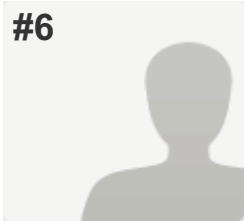
Q10: Please share any additional feedback you have about the Route 200 changes proposed for March 2016, where service would be extended past the Issaquah Highlands Park-and-Ride to Swedish Medical Center Issaquah, and service at the far southwest end of the route near Issaquah High School would be eliminated.

Respondent skipped this question

Q11: Thank you for taking the time to complete this survey. If you share your email address as a way to stay informed, we'll subscribe you to the Metro Matters email list. Please enter your email address here.

Respondent skipped this question

#6



INCOMPLETE

Collector: Web Link 1 (Web Link)

Started: Wednesday, May 27, 2015 4:22:27 PM

Last Modified: Wednesday, May 27, 2015 4:25:23 PM

Time Spent: 00:02:55

IP Address: 146.129.19.108

PAGE 2: General travel information

Q1: Where do you live?

Other (please specify) Sammamish

Q2: How often do you use the Route 200?

Occasionally (less than once a week)

Q3: For what purpose to you typically use the Route 200? To get to/from ...

shopping and errands

Q4: What is your most common destination? Examples include Fred Meyer, Issaquah Transit Center, Siemens, Issaquah High School, etc.

Fred Meyer

Q5: How often do you go to Swedish Medical Center Issaquah?

Never

PAGE 3: Phase I route changes happening June 8

Q6: On June 8, Route 200 will be extended to the Issaquah Highlands Park-and-Ride via SE Black Nugget Road and Highlands Drive NE to improve rider demand and route performance. This new routing means riders will have a connection between the Issaquah Transit Center, downtown and north Issaquah, and the Issaquah Highlands. To extend the route without requiring additional revenue, two portions will be affected:- The 220th Avenue SE, SE 51st Street and East Lake Sammamish Parkway SE loop north of SE 56th Street, which serves Microsoft, Siemens, Federal Express and other offices, will be discontinued.- The Fred Meyer and Home Depot loop on East Lake Sammamish Parkway SE and SE 62nd Street also will be discontinued. Riders will soon catch the Route 200 on SE Black Nugget Road north of the shopping area instead of boarding in the Fred Meyer parking lot. How will this affect your use of transit?

I don't know

PAGE 4: Phase II route changes proposed for 2016 - Alternatives 1 and 2

Q7: In March 2016, the Route 200 is proposed to be extended to Swedish Medical Center Issaquah in Metro's Alternative 1. How would this change affect your use of transit?

I would use transit the same

Q8: In March 2016, the current route where it travels south of SE Bush Street near Issaquah High School would be eliminated to keep the proposal cost-neutral in Alternative 2. How would this change affect your use of transit?

I would use transit the same

Q9: Do you prefer Alternative 1 or 2?

Respondent skipped this question

Q10: Please share any additional feedback you have about the Route 200 changes proposed for March 2016, where service would be extended past the Issaquah Highlands Park-and-Ride to Swedish Medical Center Issaquah, and service at the far southwest end of the route near Issaquah High School would be eliminated.

Respondent skipped this question

Q11: Thank you for taking the time to complete this survey. If you share your email address as a way to stay informed, we'll subscribe you to the Metro Matters email list. Please enter your email address here.

Respondent skipped this question

#7



INCOMPLETE

Collector: Web Link 1 (Web Link)
Started: Wednesday, May 27, 2015 4:36:03 PM
Last Modified: Wednesday, May 27, 2015 4:40:31 PM
Time Spent: 00:04:27
IP Address: 216.9.28.51

PAGE 2: General travel information


Q1: Where do you live?	Issaquah Highlands
Q2: How often do you use the Route 200?	Never
Q3: For what purpose to you typically use the Route 200? To get to/from ...	<i>Respondent skipped this question</i>
Q4: What is your most common destination? Examples include Fred Meyer, Issaquah Transit Center, Siemens, Issaquah High School, etc.	<i>Respondent skipped this question</i>
Q5: How often do you go to Swedish Medical Center Issaquah?	Several times a year

PAGE 3: Phase I route changes happening June 8

Q6: On June 8, Route 200 will be extended to the Issaquah Highlands Park-and-Ride via SE Black Nugget Road and Highlands Drive NE to improve rider demand and route performance. This new routing means riders will have a connection between the Issaquah Transit Center, downtown and north Issaquah, and the Issaquah Highlands. To extend the route without requiring additional revenue, two portions will be affected:- The 220th Avenue SE, SE 51st Street and East Lake Sammamish Parkway SE loop north of SE 56th Street, which serves Microsoft, Siemens, Federal Express and other offices, will be discontinued.- The Fred Meyer and Home Depot loop on East Lake Sammamish Parkway SE and SE 62nd Street also will be discontinued. Riders will soon catch the Route 200 on SE Black Nugget Road north of the shopping area instead of boarding in the Fred Meyer parking lot. How will this affect your use of transit?	I will use transit more
--	-------------------------

PAGE 4: Phase II route changes proposed for 2016 - Alternatives 1 and 2

<p>Q7: In March 2016, the Route 200 is proposed to be extended to Swedish Medical Center Issaquah in Metro's Alternative 1. How would this change affect your use of transit?</p>	<p>I would use transit the same</p>
<p>Q8: In March 2016, the current route where it travels south of SE Bush Street near Issaquah High School would be eliminated to keep the proposal cost-neutral in Alternative 2. How would this change affect your use of transit?</p>	<p>I would use transit the same</p>
<p>Q9: Do you prefer Alternative 1 or 2?</p>	<p>I don't know</p>
<p>Q10: Please share any additional feedback you have about the Route 200 changes proposed for March 2016, where service would be extended past the Issaquah Highlands Park-and-Ride to Swedish Medical Center Issaquah, and service at the far southwest end of the route near Issaquah High School would be eliminated.</p>	<p><i>Respondent skipped this question</i></p>
<p>Q11: Thank you for taking the time to complete this survey. If you share your email address as a way to stay informed, we'll subscribe you to the Metro Matters email list. Please enter your email address here.</p>	<p><i>Respondent skipped this question</i></p>

#8  **INCOMPLETE**

Collector: Web Link 1 (Web Link)
Started: Wednesday, May 27, 2015 4:40:16 PM
Last Modified: Wednesday, May 27, 2015 4:41:33 PM
Time Spent: 00:01:16
IP Address: 146.129.29.37

PAGE 2: General travel information

<p>Q1: Where do you live?</p>	<p>Downtown Issaquah</p>
<p>Q2: How often do you use the Route 200?</p>	<p>1 to 2 days a week</p>
<p>Q3: For what purpose to you typically use the Route 200? To get to/from ...</p>	<p>shopping and errands</p>

Route 200

Q4: What is your most common destination?
Examples include Fred Meyer, Issaquah Transit Center, Siemens, Issaquah High School, etc.

Respondent skipped this question

Q5: How often do you go to Swedish Medical Center Issaquah?

Several times a year

PAGE 3: Phase I route changes happening June 8

Q6: On June 8, Route 200 will be extended to the Issaquah Highlands Park-and-Ride via SE Black Nugget Road and Highlands Drive NE to improve rider demand and route performance. This new routing means riders will have a connection between the Issaquah Transit Center, downtown and north Issaquah, and the Issaquah Highlands. To extend the route without requiring additional revenue, two portions will be affected:- The 220th Avenue SE, SE 51st Street and East Lake Sammamish Parkway SE loop north of SE 56th Street, which serves Microsoft, Siemens, Federal Express and other offices, will be discontinued.- The Fred Meyer and Home Depot loop on East Lake Sammamish Parkway SE and SE 62nd Street also will be discontinued. Riders will soon catch the Route 200 on SE Black Nugget Road north of the shopping area instead of boarding in the Fred Meyer parking lot. How will this affect your use of transit?

I will use transit more

PAGE 4: Phase II route changes proposed for 2016 - Alternatives 1 and 2

Q7: In March 2016, the Route 200 is proposed to be extended to Swedish Medical Center Issaquah in Metro's Alternative 1. How would this change affect your use of transit?

Respondent skipped this question

Q8: In March 2016, the current route where it travels south of SE Bush Street near Issaquah High School would be eliminated to keep the proposal cost-neutral in Alternative 2. How would this change affect your use of transit?

Respondent skipped this question

Q9: Do you prefer Alternative 1 or 2?

Respondent skipped this question

Route 200

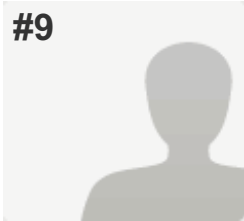
Q10: Please share any additional feedback you have about the Route 200 changes proposed for March 2016, where service would be extended past the Issaquah Highlands Park-and-Ride to Swedish Medical Center Issaquah, and service at the far southwest end of the route near Issaquah High School would be eliminated.

Respondent skipped this question

Q11: Thank you for taking the time to complete this survey. If you share your email address as a way to stay informed, we'll subscribe you to the Metro Matters email list. Please enter your email address here.

Respondent skipped this question

#9



COMPLETE

Collector: Web Link 1 (Web Link)

Started: Wednesday, May 27, 2015 4:39:56 PM

Last Modified: Wednesday, May 27, 2015 4:45:14 PM

Time Spent: 00:05:17

IP Address: 204.152.61.20

PAGE 2: General travel information

Q1: Where do you live?

Other (please specify) Mercer Island

Q2: How often do you use the Route 200?

1 to 2 days a week

Q3: For what purpose to you typically use the Route 200? To get to/from ...

work, shopping and errands

Q4: What is your most common destination? Examples include Fred Meyer, Issaquah Transit Center, Siemens, Issaquah High School, etc.

City Hall Northwest, various shopping areas.

Q5: How often do you go to Swedish Medical Center Issaquah?

Never

PAGE 3: Phase I route changes happening June 8

Q6: On June 8, Route 200 will be extended to the Issaquah Highlands Park-and-Ride via SE Black Nugget Road and Highlands Drive NE to improve rider demand and route performance. This new routing means riders will have a connection between the Issaquah Transit Center, downtown and north Issaquah, and the Issaquah Highlands. To extend the route without requiring additional revenue, two portions will be affected:- The 220th Avenue SE, SE 51st Street and East Lake Sammamish Parkway SE loop north of SE 56th Street, which serves Microsoft, Siemens, Federal Express and other offices, will be discontinued.- The Fred Meyer and Home Depot loop on East Lake Sammamish Parkway SE and SE 62nd Street also will be discontinued. Riders will soon catch the Route 200 on SE Black Nugget Road north of the shopping area instead of boarding in the Fred Meyer parking lot. How will this affect your use of transit?

I will use transit more

PAGE 4: Phase II route changes proposed for 2016 - Alternatives 1 and 2

Q7: In March 2016, the Route 200 is proposed to be extended to Swedish Medical Center Issaquah in Metro's Alternative 1. How would this change affect your use of transit?

I would use transit less

Q8: In March 2016, the current route where it travels south of SE Bush Street near Issaquah High School would be eliminated to keep the proposal cost-neutral in Alternative 2. How would this change affect your use of transit?

I would use transit the same

Q9: Do you prefer Alternative 1 or 2?

Alternative 2 – end at Issaquah Highlands Park-and-Ride with 30-minute frequency

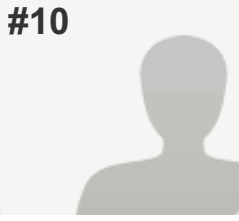
Q10: Please share any additional feedback you have about the Route 200 changes proposed for March 2016, where service would be extended past the Issaquah Highlands Park-and-Ride to Swedish Medical Center Issaquah, and service at the far southwest end of the route near Issaquah High School would be eliminated.

Maintaining a consistent, easy to understand headway, such as every-30-minutes, is very important for transit legibility and usability. 40 minute headways don't make much sense UNLESS it is timed to meet the 554 to/from Seattle at Issaquah TC (NOT Issaquah Highlands). This could also require some tweaks to the 554's schedule.

Q11: Thank you for taking the time to complete this survey. If you share your email address as a way to stay informed, we'll subscribe you to the Metro Matters email list. Please enter your email address here.

Respondent skipped this question

#10

**COMPLETE****Collector:** Web Link 1 (Web Link)**Started:** Wednesday, May 27, 2015 4:38:47 PM**Last Modified:** Wednesday, May 27, 2015 4:46:40 PM**Time Spent:** 00:07:53**IP Address:** 50.194.61.253**PAGE 2: General travel information**

Q1: Where do you live?	Downtown Issaquah
Q2: How often do you use the Route 200?	Occasionally (less than once a week)
Q3: For what purpose do you typically use the Route 200? To get to/from ...	shopping and errands
Q4: What is your most common destination? Examples include Fred Meyer, Issaquah Transit Center, Siemens, Issaquah High School, etc.	Target
Q5: How often do you go to Swedish Medical Center Issaquah?	Several times a week


PAGE 3: Phase I route changes happening June 8

Q6: On June 8, Route 200 will be extended to the Issaquah Highlands Park-and-Ride via SE Black Nugget Road and Highlands Drive NE to improve rider demand and route performance. This new routing means riders will have a connection between the Issaquah Transit Center, downtown and north Issaquah, and the Issaquah Highlands. To extend the route without requiring additional revenue, two portions will be affected:- The 220th Avenue SE, SE 51st Street and East Lake Sammamish Parkway SE loop north of SE 56th Street, which serves Microsoft, Siemens, Federal Express and other offices, will be discontinued.- The Fred Meyer and Home Depot loop on East Lake Sammamish Parkway SE and SE 62nd Street also will be discontinued. Riders will soon catch the Route 200 on SE Black Nugget Road north of the shopping area instead of boarding in the Fred Meyer parking lot. How will this affect your use of transit?	I will use transit the same
--	-----------------------------

PAGE 4: Phase II route changes proposed for 2016 - Alternatives 1 and 2

<p>Q7: In March 2016, the Route 200 is proposed to be extended to Swedish Medical Center Issaquah in Metro's Alternative 1. How would this change affect your use of transit?</p>	<p>I would use transit the same</p>
<p>Q8: In March 2016, the current route where it travels south of SE Bush Street near Issaquah High School would be eliminated to keep the proposal cost-neutral in Alternative 2. How would this change affect your use of transit?</p>	<p>I would use transit the same</p>
<p>Q9: Do you prefer Alternative 1 or 2?</p>	<p>Alternative 1 – extend to Swedish Medical Center Issaquah with 40-minute frequency</p>
<p>Q10: Please share any additional feedback you have about the Route 200 changes proposed for March 2016, where service would be extended past the Issaquah Highlands Park-and-Ride to Swedish Medical Center Issaquah, and service at the far southwest end of the route near Issaquah High School would be eliminated.</p>	
<p>I'm glad to see that Route 200 is being extended to the Highlands. It would be nice (for me) if it went directly up Sunset/Highland to Swedish, and save me the cost of the Sound transit fare or the drive up, but that's OK. It's not an urgent need.</p>	
<p>Q11: Thank you for taking the time to complete this survey. If you share your email address as a way to stay informed, we'll subscribe you to the Metro Matters email list. Please enter your email address here.</p>	<p><i>Respondent skipped this question</i></p>

#11



COMPLETE

Collector: Web Link 1 (Web Link)
Started: Wednesday, May 27, 2015 4:43:12 PM
Last Modified: Wednesday, May 27, 2015 4:47:21 PM
Time Spent: 00:04:09
IP Address: 67.134.198.227

PAGE 2: General travel information

<p>Q1: Where do you live?</p>	<p>North Issaquah</p>
<p>Q2: How often do you use the Route 200?</p>	<p>Never</p>

Route 200

Q3: For what purpose to you typically use the Route 200? To get to/from ...	<i>Respondent skipped this question</i>
Q4: What is your most common destination? Examples include Fred Meyer, Issaquah Transit Center, Siemens, Issaquah High School, etc.	<i>Respondent skipped this question</i>
Q5: How often do you go to Swedish Medical Center Issaquah?	Never

PAGE 3: Phase I route changes happening June 8

Q6: On June 8, Route 200 will be extended to the Issaquah Highlands Park-and-Ride via SE Black Nugget Road and Highlands Drive NE to improve rider demand and route performance. This new routing means riders will have a connection between the Issaquah Transit Center, downtown and north Issaquah, and the Issaquah Highlands. To extend the route without requiring additional revenue, two portions will be affected:- The 220th Avenue SE, SE 51st Street and East Lake Sammamish Parkway SE loop north of SE 56th Street, which serves Microsoft, Siemens, Federal Express and other offices, will be discontinued.- The Fred Meyer and Home Depot loop on East Lake Sammamish Parkway SE and SE 62nd Street also will be discontinued. Riders will soon catch the Route 200 on SE Black Nugget Road north of the shopping area instead of boarding in the Fred Meyer parking lot. How will this affect your use of transit?	I will use transit the same
--	-----------------------------

PAGE 4: Phase II route changes proposed for 2016 - Alternatives 1 and 2

Q7: In March 2016, the Route 200 is proposed to be extended to Swedish Medical Center Issaquah in Metro's Alternative 1. How would this change affect your use of transit?	I don't know
Q8: In March 2016, the current route where it travels south of SE Bush Street near Issaquah High School would be eliminated to keep the proposal cost-neutral in Alternative 2. How would this change affect your use of transit?	I don't know
Q9: Do you prefer Alternative 1 or 2?	I don't know

Route 200

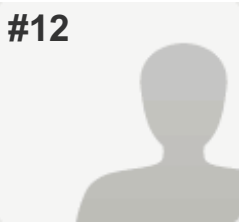
Q10: Please share any additional feedback you have about the Route 200 changes proposed for March 2016, where service would be extended past the Issaquah Highlands Park-and-Ride to Swedish Medical Center Issaquah, and service at the far southwest end of the route near Issaquah High School would be eliminated.

The highlands park-n-ride lot fills up. Rather than focusing efforts on a route that isn't heavily used, fix the problem with 216/218/219 routes where passengers are left stranded waiting and hoping there will be room on the next bus. This happens every day!!!!!!!!!!!!!!!!!!!!!!

Q11: Thank you for taking the time to complete this survey. If you share your email address as a way to stay informed, we'll subscribe you to the Metro Matters email list. Please enter your email address here.

Respondent skipped this question

#12



INCOMPLETE

Collector: Web Link 1 (Web Link)
Started: Wednesday, May 27, 2015 8:45:09 PM
Last Modified: Wednesday, May 27, 2015 8:46:28 PM
Time Spent: 00:01:19
IP Address: 50.159.109.52

PAGE 2: General travel information

Q1: Where do you live?

Other (please specify) Klahanie

Q2: How often do you use the Route 200?

Occasionally (less than once a week)

Q3: For what purpose do you typically use the Route 200? To get to/from ...

work

Q4: What is your most common destination? Examples include Fred Meyer, Issaquah Transit Center, Siemens, Issaquah High School, etc.

Fred Meyer

Q5: How often do you go to Swedish Medical Center Issaquah?

Several times a year

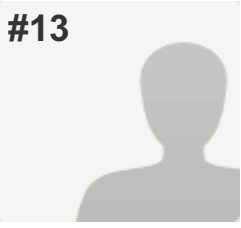
PAGE 3: Phase I route changes happening June 8

<p>Q6: On June 8, Route 200 will be extended to the Issaquah Highlands Park-and-Ride via SE Black Nugget Road and Highlands Drive NE to improve rider demand and route performance. This new routing means riders will have a connection between the Issaquah Transit Center, downtown and north Issaquah, and the Issaquah Highlands. To extend the route without requiring additional revenue, two portions will be affected:- The 220th Avenue SE, SE 51st Street and East Lake Sammamish Parkway SE loop north of SE 56th Street, which serves Microsoft, Siemens, Federal Express and other offices, will be discontinued.- The Fred Meyer and Home Depot loop on East Lake Sammamish Parkway SE and SE 62nd Street also will be discontinued. Riders will soon catch the Route 200 on SE Black Nugget Road north of the shopping area instead of boarding in the Fred Meyer parking lot. How will this affect your use of transit?</p>	<p>I don't know</p>
---	---------------------

PAGE 4: Phase II route changes proposed for 2016 - Alternatives 1 and 2

<p>Q7: In March 2016, the Route 200 is proposed to be extended to Swedish Medical Center Issaquah in Metro's Alternative 1. How would this change affect your use of transit?</p>	<p><i>Respondent skipped this question</i></p>
<p>Q8: In March 2016, the current route where it travels south of SE Bush Street near Issaquah High School would be eliminated to keep the proposal cost-neutral in Alternative 2. How would this change affect your use of transit?</p>	<p><i>Respondent skipped this question</i></p>
<p>Q9: Do you prefer Alternative 1 or 2?</p>	<p><i>Respondent skipped this question</i></p>
<p>Q10: Please share any additional feedback you have about the Route 200 changes proposed for March 2016, where service would be extended past the Issaquah Highlands Park-and-Ride to Swedish Medical Center Issaquah, and service at the far southwest end of the route near Issaquah High School would be eliminated.</p>	<p><i>Respondent skipped this question</i></p>
<p>Q11: Thank you for taking the time to complete this survey. If you share your email address as a way to stay informed, we'll subscribe you to the Metro Matters email list. Please enter your email address here.</p>	<p><i>Respondent skipped this question</i></p>

#13

**COMPLETE****Collector:** Web Link 1 (Web Link)**Started:** Wednesday, May 27, 2015 8:43:46 PM**Last Modified:** Wednesday, May 27, 2015 8:49:16 PM**Time Spent:** 00:05:29**IP Address:** 98.225.1.50

PAGE 2: General travel information


Q1: Where do you live?	Issaquah Highlands
Q2: How often do you use the Route 200?	Never
Q3: For what purpose to you typically use the Route 200? To get to/from ...	<i>Respondent skipped this question</i>
Q4: What is your most common destination? Examples include Fred Meyer, Issaquah Transit Center, Siemens, Issaquah High School, etc.	<i>Respondent skipped this question</i>
Q5: How often do you go to Swedish Medical Center Issaquah?	Several times a year

PAGE 3: Phase I route changes happening June 8

Q6: On June 8, Route 200 will be extended to the Issaquah Highlands Park-and-Ride via SE Black Nugget Road and Highlands Drive NE to improve rider demand and route performance. This new routing means riders will have a connection between the Issaquah Transit Center, downtown and north Issaquah, and the Issaquah Highlands. To extend the route without requiring additional revenue, two portions will be affected:- The 220th Avenue SE, SE 51st Street and East Lake Sammamish Parkway SE loop north of SE 56th Street, which serves Microsoft, Siemens, Federal Express and other offices, will be discontinued.- The Fred Meyer and Home Depot loop on East Lake Sammamish Parkway SE and SE 62nd Street also will be discontinued. Riders will soon catch the Route 200 on SE Black Nugget Road north of the shopping area instead of boarding in the Fred Meyer parking lot. How will this affect your use of transit?	I will use transit more
--	-------------------------

PAGE 4: Phase II route changes proposed for 2016 - Alternatives 1 and 2

Q7: In March 2016, the Route 200 is proposed to be extended to Swedish Medical Center Issaquah in Metro's Alternative 1. How would this change affect your use of transit?	I would use transit more
Q8: In March 2016, the current route where it travels south of SE Bush Street near Issaquah High School would be eliminated to keep the proposal cost-neutral in Alternative 2. How would this change affect your use of transit?	I would use transit more
Q9: Do you prefer Alternative 1 or 2?	Alternative 2 – end at Issaquah Highlands Park-and-Ride with 30-minute frequency
Q10: Please share any additional feedback you have about the Route 200 changes proposed for March 2016, where service would be extended past the Issaquah Highlands Park-and-Ride to Swedish Medical Center Issaquah, and service at the far southwest end of the route near Issaquah High School would be eliminated.	<i>Respondent skipped this question</i>
Q11: Thank you for taking the time to complete this survey. If you share your email address as a way to stay informed, we'll subscribe you to the Metro Matters email list. Please enter your email address here.	<i>Respondent skipped this question</i>

#14  **COMPLETE**

Collector: Web Link 1 (Web Link)
Started: Wednesday, May 27, 2015 9:38:54 PM
Last Modified: Wednesday, May 27, 2015 9:43:18 PM
Time Spent: 00:04:23
IP Address: 174.61.154.199

PAGE 2: General travel information

Q1: Where do you live?	Other (please specify) Issaquah Pine Lk Rd
Q2: How often do you use the Route 200?	Occasionally (less than once a week)

Route 200

Q3: For what purpose to you typically use the Route 200? To get to/from ... shopping and errands,
transfers to other bus routes

Q4: What is your most common destination? Examples include Fred Meyer, Issaquah Transit Center, Siemens, Issaquah High School, etc.

Fred Meyer, Swedish, downtown Issaquah

Q5: How often do you go to Swedish Medical Center Issaquah? Several times a week

PAGE 3: Phase I route changes happening June 8

Q6: On June 8, Route 200 will be extended to the Issaquah Highlands Park-and-Ride via SE Black Nugget Road and Highlands Drive NE to improve rider demand and route performance. This new routing means riders will have a connection between the Issaquah Transit Center, downtown and north Issaquah, and the Issaquah Highlands. To extend the route without requiring additional revenue, two portions will be affected:- The 220th Avenue SE, SE 51st Street and East Lake Sammamish Parkway SE loop north of SE 56th Street, which serves Microsoft, Siemens, Federal Express and other offices, will be discontinued.- The Fred Meyer and Home Depot loop on East Lake Sammamish Parkway SE and SE 62nd Street also will be discontinued. Riders will soon catch the Route 200 on SE Black Nugget Road north of the shopping area instead of boarding in the Fred Meyer parking lot. How will this affect your use of transit? I will use transit the same

PAGE 4: Phase II route changes proposed for 2016 - Alternatives 1 and 2

Q7: In March 2016, the Route 200 is proposed to be extended to Swedish Medical Center Issaquah in Metro's Alternative 1. How would this change affect your use of transit? I would use transit less

Q8: In March 2016, the current route where it travels south of SE Bush Street near Issaquah High School would be eliminated to keep the proposal cost-neutral in Alternative 2. How would this change affect your use of transit? *Respondent skipped this question*

Q9: Do you prefer Alternative 1 or 2? Alternative 1 – extend to Swedish Medical Center Issaquah with 40-minute frequency

Route 200

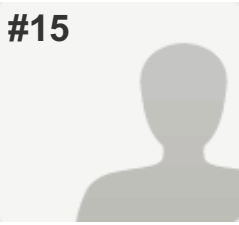
Q10: Please share any additional feedback you have about the Route 200 changes proposed for March 2016, where service would be extended past the Issaquah Highlands Park-and-Ride to Swedish Medical Center Issaquah, and service at the far southwest end of the route near Issaquah High School would be eliminated.

There is no mid-day bus route on Issaquah Pine Lk Rd since the 927 route we eliminated. That prohibits me from catching a bus except in early a.m. or late afternoon. Mid-day shopping without a car is impossible. Some route for that road would be helpful especially with all the new homes being built on it right now.

Q11: Thank you for taking the time to complete this survey. If you share your email address as a way to stay informed, we'll subscribe you to the Metro Matters email list. Please enter your email address here.

Respondent skipped this question

#15



COMPLETE

Collector: Web Link 1 (Web Link)

Started: Wednesday, May 27, 2015 9:50:33 PM

Last Modified: Wednesday, May 27, 2015 9:55:07 PM

Time Spent: 00:04:34

IP Address: 174.21.55.208

PAGE 2: General travel information

Q1: Where do you live?

Other (please specify) Sammamish

Q2: How often do you use the Route 200?

Occasionally (less than once a week)

Q3: For what purpose do you typically use the Route 200? To get to/from ...

shopping and errands,
transfers to other bus routes

Q4: What is your most common destination? Examples include Fred Meyer, Issaquah Transit Center, Siemens, Issaquah High School, etc.

Fred Meyer

Q5: How often do you go to Swedish Medical Center Issaquah?

Several times a year

PAGE 3: Phase I route changes happening June 8

Q6: On June 8, Route 200 will be extended to the Issaquah Highlands Park-and-Ride via SE Black Nugget Road and Highlands Drive NE to improve rider demand and route performance. This new routing means riders will have a connection between the Issaquah Transit Center, downtown and north Issaquah, and the Issaquah Highlands. To extend the route without requiring additional revenue, two portions will be affected:- The 220th Avenue SE, SE 51st Street and East Lake Sammamish Parkway SE loop north of SE 56th Street, which serves Microsoft, Siemens, Federal Express and other offices, will be discontinued.- The Fred Meyer and Home Depot loop on East Lake Sammamish Parkway SE and SE 62nd Street also will be discontinued. Riders will soon catch the Route 200 on SE Black Nugget Road north of the shopping area instead of boarding in the Fred Meyer parking lot. How will this affect your use of transit?

I will use transit the same

PAGE 4: Phase II route changes proposed for 2016 - Alternatives 1 and 2

Q7: In March 2016, the Route 200 is proposed to be extended to Swedish Medical Center Issaquah in Metro's Alternative 1. How would this change affect your use of transit?

I would use transit the same

Q8: In March 2016, the current route where it travels south of SE Bush Street near Issaquah High School would be eliminated to keep the proposal cost-neutral in Alternative 2. How would this change affect your use of transit?

I don't know

Q9: Do you prefer Alternative 1 or 2?

Alternative 1 – extend to Swedish Medical Center Issaquah with 40-minute frequency

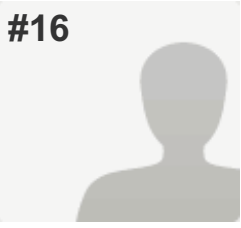
Q10: Please share any additional feedback you have about the Route 200 changes proposed for March 2016, where service would be extended past the Issaquah Highlands Park-and-Ride to Swedish Medical Center Issaquah, and service at the far southwest end of the route near Issaquah High School would be eliminated.

Respondent skipped this question

Q11: Thank you for taking the time to complete this survey. If you share your email address as a way to stay informed, we'll subscribe you to the Metro Matters email list. Please enter your email address here.

SayLarry@gmail.com

#16

**COMPLETE****Collector:** Web Link 1 (Web Link)**Started:** Wednesday, May 27, 2015 10:37:40 PM**Last Modified:** Wednesday, May 27, 2015 10:43:32 PM**Time Spent:** 00:05:52**IP Address:** 63.224.37.161**PAGE 2: General travel information**

Q1: Where do you live?	Downtown Issaquah
Q2: How often do you use the Route 200?	Never
Q3: For what purpose to you typically use the Route 200? To get to/from ...	shopping and errands, medical appointments, transfers to other bus routes
Q4: What is your most common destination? Examples include Fred Meyer, Issaquah Transit Center, Siemens, Issaquah High School, etc.	Costco, Fred Meyer, Home Depot, work.
Q5: How often do you go to Swedish Medical Center Issaquah?	Never


PAGE 3: Phase I route changes happening June 8

Q6: On June 8, Route 200 will be extended to the Issaquah Highlands Park-and-Ride via SE Black Nugget Road and Highlands Drive NE to improve rider demand and route performance. This new routing means riders will have a connection between the Issaquah Transit Center, downtown and north Issaquah, and the Issaquah Highlands. To extend the route without requiring additional revenue, two portions will be affected:- The 220th Avenue SE, SE 51st Street and East Lake Sammamish Parkway SE loop north of SE 56th Street, which serves Microsoft, Siemens, Federal Express and other offices, will be discontinued.- The Fred Meyer and Home Depot loop on East Lake Sammamish Parkway SE and SE 62nd Street also will be discontinued. Riders will soon catch the Route 200 on SE Black Nugget Road north of the shopping area instead of boarding in the Fred Meyer parking lot. How will this affect your use of transit?	I don't know
--	--------------

PAGE 4: Phase II route changes proposed for 2016 - Alternatives 1 and 2

<p>Q7: In March 2016, the Route 200 is proposed to be extended to Swedish Medical Center Issaquah in Metro's Alternative 1. How would this change affect your use of transit?</p>	<p>I don't know</p>
<p>Q8: In March 2016, the current route where it travels south of SE Bush Street near Issaquah High School would be eliminated to keep the proposal cost-neutral in Alternative 2. How would this change affect your use of transit?</p>	<p>I would use transit the same</p>
<p>Q9: Do you prefer Alternative 1 or 2?</p>	<p>I don't know</p>
<p>Q10: Please share any additional feedback you have about the Route 200 changes proposed for March 2016, where service would be extended past the Issaquah Highlands Park-and-Ride to Swedish Medical Center Issaquah, and service at the far southwest end of the route near Issaquah High School would be eliminated.</p>	
<p>It would be nice to have a saturday route to the shopping north of the freeway. (costco, fred meyer, .etc). Right now there is nothing.</p>	
<p>Q11: Thank you for taking the time to complete this survey. If you share your email address as a way to stay informed, we'll subscribe you to the Metro Matters email list. Please enter your email address here.</p>	<p>j.black@recordsafe.com</p>

#17



COMPLETE

Collector: Web Link 1 (Web Link)
Started: Thursday, May 28, 2015 7:10:47 AM
Last Modified: Thursday, May 28, 2015 7:36:12 AM
Time Spent: 00:25:25
IP Address: 172.56.32.234

PAGE 2: General travel information

<p>Q1: Where do you live?</p>	<p>Other (please specify) 805 Front St. S</p>
<p>Q2: How often do you use the Route 200?</p>	<p>3 or more days a week</p>

Route 200

Q3: For what purpose to you typically use the Route 200? To get to/from ...

shopping and errands,
recreational activities and fun,
medical appointments,
transfers to other bus routes

Q4: What is your most common destination? Examples include Fred Meyer, Issaquah Transit Center, Siemens, Issaquah High School, etc.

Issaquah Valley Senior Center

Senior Citizen Center · 0.2 mi 75 NE Creek Way, Issaquah, WA 98027 (425) 392-2381

Q5: How often do you go to Swedish Medical Center Issaquah?

Never

PAGE 3: Phase I route changes happening June 8

Q6: On June 8, Route 200 will be extended to the Issaquah Highlands Park-and-Ride via SE Black Nugget Road and Highlands Drive NE to improve rider demand and route performance. This new routing means riders will have a connection between the Issaquah Transit Center, downtown and north Issaquah, and the Issaquah Highlands. To extend the route without requiring additional revenue, two portions will be affected:- The 220th Avenue SE, SE 51st Street and East Lake Sammamish Parkway SE loop north of SE 56th Street, which serves Microsoft, Siemens, Federal Express and other offices, will be discontinued.- The Fred Meyer and Home Depot loop on East Lake Sammamish Parkway SE and SE 62nd Street also will be discontinued. Riders will soon catch the Route 200 on SE Black Nugget Road north of the shopping area instead of boarding in the Fred Meyer parking lot. How will this affect your use of transit?

I will use transit the same

PAGE 4: Phase II route changes proposed for 2016 - Alternatives 1 and 2

Q7: In March 2016, the Route 200 is proposed to be extended to Swedish Medical Center Issaquah in Metro's Alternative 1. How would this change affect your use of transit?

I would use transit less

Route 200

Q8: In March 2016, the current route where it travels south of SE Bush Street near Issaquah High School would be eliminated to keep the proposal cost-neutral in Alternative 2. How would this change affect your use of transit? I would use transit less

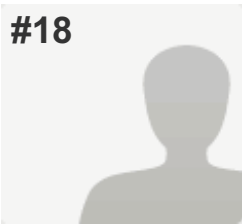
Q9: Do you prefer Alternative 1 or 2? Neither – do not eliminate the Issaquah High School loop

Q10: Please share any additional feedback you have about the Route 200 changes proposed for March 2016, where service would be extended past the Issaquah Highlands Park-and-Ride to Swedish Medical Center Issaquah, and service at the far southwest end of the route near Issaquah High School would be eliminated.

You are eliminating service for Senior Citizens.

Q11: Thank you for taking the time to complete this survey. If you share your email address as a way to stay informed, we'll subscribe you to the Metro Matters email list. Please enter your email address here. aswed_1013@yahoo.com

#18



COMPLETE

Collector: Web Link 1 (Web Link)
Started: Thursday, May 28, 2015 8:35:28 AM
Last Modified: Thursday, May 28, 2015 8:39:17 AM
Time Spent: 00:03:48
IP Address: 50.170.29.125

PAGE 2: General travel information

Q1: Where do you live? Downtown Issaquah

Q2: How often do you use the Route 200? Occasionally (less than once a week)

Q3: For what purpose to you typically use the Route 200? To get to/from ... shopping and errands, medical appointments, transfers to other bus routes

Q4: What is your most common destination? Examples include Fred Meyer, Issaquah Transit Center, Siemens, Issaquah High School, etc.

Issaquah Transit Center & Fred Meyer

Q5: How often do you go to Swedish Medical Center Issaquah? Several times a year

PAGE 3: Phase I route changes happening June 8

<p>Q6: On June 8, Route 200 will be extended to the Issaquah Highlands Park-and-Ride via SE Black Nugget Road and Highlands Drive NE to improve rider demand and route performance. This new routing means riders will have a connection between the Issaquah Transit Center, downtown and north Issaquah, and the Issaquah Highlands. To extend the route without requiring additional revenue, two portions will be affected:- The 220th Avenue SE, SE 51st Street and East Lake Sammamish Parkway SE loop north of SE 56th Street, which serves Microsoft, Siemens, Federal Express and other offices, will be discontinued.- The Fred Meyer and Home Depot loop on East Lake Sammamish Parkway SE and SE 62nd Street also will be discontinued. Riders will soon catch the Route 200 on SE Black Nugget Road north of the shopping area instead of boarding in the Fred Meyer parking lot. How will this affect your use of transit?</p>	<p>I will use transit more</p>
---	--------------------------------

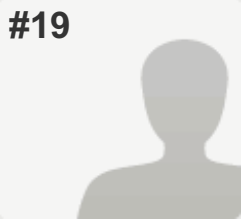
PAGE 4: Phase II route changes proposed for 2016 - Alternatives 1 and 2

<p>Q7: In March 2016, the Route 200 is proposed to be extended to Swedish Medical Center Issaquah in Metro's Alternative 1. How would this change affect your use of transit?</p>	<p>I would use transit more</p>
<p>Q8: In March 2016, the current route where it travels south of SE Bush Street near Issaquah High School would be eliminated to keep the proposal cost-neutral in Alternative 2. How would this change affect your use of transit?</p>	<p>I would use transit the same</p>
<p>Q9: Do you prefer Alternative 1 or 2?</p>	<p>Alternative 1 – extend to Swedish Medical Center Issaquah with 40-minute frequency</p>
<p>Q10: Please share any additional feedback you have about the Route 200 changes proposed for March 2016, where service would be extended past the Issaquah Highlands Park-and-Ride to Swedish Medical Center Issaquah, and service at the far southwest end of the route near Issaquah High School would be eliminated.</p>	
<p>I hope the 200 route would go back to pre-reduction service hours as well. The "rush hour" schedule doesn't work as well for me.</p>	

Q11: Thank you for taking the time to complete this survey. If you share your email address as a way to stay informed, we'll subscribe you to the Metro Matters email list. Please enter your email address here.

robertawaggoner@yahoo.com

#19



COMPLETE

Collector: Web Link 1 (Web Link)

Started: Thursday, May 28, 2015 10:49:25 AM

Last Modified: Thursday, May 28, 2015 10:54:48 AM

Time Spent: 00:05:22

IP Address: 50.125.71.245

PAGE 2: General travel information

Q1: Where do you live?

Other (please specify) Squak Mountain

Q2: How often do you use the Route 200?

1 to 2 days a week

Q3: For what purpose to you typically use the Route 200? To get to/from ...

shopping and errands,
recreational activities and fun

Q4: What is your most common destination? Examples include Fred Meyer, Issaquah Transit Center, Siemens, Issaquah High School, etc.

Fred Meyer, Issaquah High School, soon Issaquah Highlands

Q5: How often do you go to Swedish Medical Center Issaquah?

Several times a year

PAGE 3: Phase I route changes happening June 8

Q6: On June 8, Route 200 will be extended to the Issaquah Highlands Park-and-Ride via SE Black Nugget Road and Highlands Drive NE to improve rider demand and route performance. This new routing means riders will have a connection between the Issaquah Transit Center, downtown and north Issaquah, and the Issaquah Highlands. To extend the route without requiring additional revenue, two portions will be affected:- The 220th Avenue SE, SE 51st Street and East Lake Sammamish Parkway SE loop north of SE 56th Street, which serves Microsoft, Siemens, Federal Express and other offices, will be discontinued.- The Fred Meyer and Home Depot loop on East Lake Sammamish Parkway SE and SE 62nd Street also will be discontinued. Riders will soon catch the Route 200 on SE Black Nugget Road north of the shopping area instead of boarding in the Fred Meyer parking lot. How will this affect your use of transit?

I will use transit the same

PAGE 4: Phase II route changes proposed for 2016 - Alternatives 1 and 2

Q7: In March 2016, the Route 200 is proposed to be extended to Swedish Medical Center Issaquah in Metro's Alternative 1. How would this change affect your use of transit?

I would use transit the same

Q8: In March 2016, the current route where it travels south of SE Bush Street near Issaquah High School would be eliminated to keep the proposal cost-neutral in Alternative 2. How would this change affect your use of transit?

I would use transit the same

Q9: Do you prefer Alternative 1 or 2?

Alternative 1 – extend to Swedish Medical Center Issaquah with 40-minute frequency

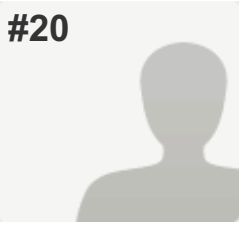
Q10: Please share any additional feedback you have about the Route 200 changes proposed for March 2016, where service would be extended past the Issaquah Highlands Park-and-Ride to Swedish Medical Center Issaquah, and service at the far southwest end of the route near Issaquah High School would be eliminated.

Would it be more convenient to loop from the high school to the highlands as well? One big circle with 2 buses traveling opposite directions?

Q11: Thank you for taking the time to complete this survey. If you share your email address as a way to stay informed, we'll subscribe you to the Metro Matters email list. Please enter your email address here.

valeostrovkin@gmail.com

#20

**COMPLETE**

Collector: Web Link 1 (Web Link)
Started: Thursday, May 28, 2015 9:45:32 AM
Last Modified: Thursday, May 28, 2015 11:25:45 AM
Time Spent: 01:40:12
IP Address: 168.156.35.119

PAGE 2: General travel information


Q1: Where do you live?	Other (please specify) Front Street S
Q2: How often do you use the Route 200?	Never
Q3: For what purpose to you typically use the Route 200? To get to/from ...	Other (please specify) I would use it for all of these if it ran often enough to be usable.
Q4: What is your most common destination? Examples include Fred Meyer, Issaquah Transit Center, Siemens, Issaquah High School, etc.	
If I could use this route, I would be going to the Transit Center, Fred Meyer, Library, Lake Samm State Park, Value Village, Swedish Medical and more.	
Q5: How often do you go to Swedish Medical Center Issaquah?	Never

PAGE 3: Phase I route changes happening June 8

Q6: On June 8, Route 200 will be extended to the Issaquah Highlands Park-and-Ride via SE Black Nugget Road and Highlands Drive NE to improve rider demand and route performance. This new routing means riders will have a connection between the Issaquah Transit Center, downtown and north Issaquah, and the Issaquah Highlands. To extend the route without requiring additional revenue, two portions will be affected:- The 220th Avenue SE, SE 51st Street and East Lake Sammamish Parkway SE loop north of SE 56th Street, which serves Microsoft, Siemens, Federal Express and other offices, will be discontinued.- The Fred Meyer and Home Depot loop on East Lake Sammamish Parkway SE and SE 62nd Street also will be discontinued. Riders will soon catch the Route 200 on SE Black Nugget Road north of the shopping area instead of boarding in the Fred Meyer parking lot. How will this affect your use of transit?	I will use transit less
--	-------------------------

PAGE 4: Phase II route changes proposed for 2016 - Alternatives 1 and 2

<p>Q7: In March 2016, the Route 200 is proposed to be extended to Swedish Medical Center Issaquah in Metro's Alternative 1. How would this change affect your use of transit?</p>	<p>I would use transit less</p>
<p>Q8: In March 2016, the current route where it travels south of SE Bush Street near Issaquah High School would be eliminated to keep the proposal cost-neutral in Alternative 2. How would this change affect your use of transit?</p>	<p>I would use transit less</p>
<p>Q9: Do you prefer Alternative 1 or 2?</p>	<p>Neither – do not eliminate the Issaquah High School loop</p>
<p>Q10: Please share any additional feedback you have about the Route 200 changes proposed for March 2016, where service would be extended past the Issaquah Highlands Park-and-Ride to Swedish Medical Center Issaquah, and service at the far southwest end of the route near Issaquah High School would be eliminated.</p>	
<p>The proposed changes will eliminate the ONLY bus service for my low-income apartment complex - Andrew's Arms. The disabled and extremely poor residents of my complex already struggle with getting places due to the route 200 service cuts of Fall 2014. Eliminating the ONLY stops that serve my complex will be devastating to our residents. Additionally, there are two more low-income apartment complexes – Johnson Hill for families and Mine Hill for senior citizens – which are both on SW Clark Street with the closest bus being .4 of a mile away. Rather than expanding the route into the Highlands of Issaquah, these three low-income apartment complexes (totaling 80 apartments) and the many other surrounding market-rate apartment complexes would all be much better served by extending the service hours for the existing route 200.</p>	
<p>Q11: Thank you for taking the time to complete this survey. If you share your email address as a way to stay informed, we'll subscribe you to the Metro Matters email list. Please enter your email address here.</p>	<p>matilda_78@yahoo.com</p>

<p>#21</p>		<p>COMPLETE Collector: Web Link 1 (Web Link) Started: Thursday, May 28, 2015 12:15:03 PM Last Modified: Thursday, May 28, 2015 12:18:13 PM Time Spent: 00:03:09 IP Address: 209.180.208.34</p>
------------	---	---

PAGE 2: General travel information

<p>Q1: Where do you live?</p>	<p>Issaquah Highlands</p>
--------------------------------------	---------------------------

Route 200

Q2: How often do you use the Route 200?	Never
Q3: For what purpose to you typically use the Route 200? To get to/from ...	<i>Respondent skipped this question</i>
Q4: What is your most common destination? Examples include Fred Meyer, Issaquah Transit Center, Siemens, Issaquah High School, etc.	<i>Respondent skipped this question</i>
Q5: How often do you go to Swedish Medical Center Issaquah?	Several times a year

PAGE 3: Phase I route changes happening June 8

Q6: On June 8, Route 200 will be extended to the Issaquah Highlands Park-and-Ride via SE Black Nugget Road and Highlands Drive NE to improve rider demand and route performance. This new routing means riders will have a connection between the Issaquah Transit Center, downtown and north Issaquah, and the Issaquah Highlands. To extend the route without requiring additional revenue, two portions will be affected:- The 220th Avenue SE, SE 51st Street and East Lake Sammamish Parkway SE loop north of SE 56th Street, which serves Microsoft, Siemens, Federal Express and other offices, will be discontinued.- The Fred Meyer and Home Depot loop on East Lake Sammamish Parkway SE and SE 62nd Street also will be discontinued. Riders will soon catch the Route 200 on SE Black Nugget Road north of the shopping area instead of boarding in the Fred Meyer parking lot. How will this affect your use of transit?	I will use transit more
--	-------------------------

PAGE 4: Phase II route changes proposed for 2016 - Alternatives 1 and 2

Q7: In March 2016, the Route 200 is proposed to be extended to Swedish Medical Center Issaquah in Metro's Alternative 1. How would this change affect your use of transit?	<i>Respondent skipped this question</i>
Q8: In March 2016, the current route where it travels south of SE Bush Street near Issaquah High School would be eliminated to keep the proposal cost-neutral in Alternative 2. How would this change affect your use of transit?	I would use transit the same

Route 200

Q9: Do you prefer Alternative 1 or 2?

Alternative 1 – extend to Swedish Medical Center Issaquah with 40-minute frequency

Q10: Please share any additional feedback you have about the Route 200 changes proposed for March 2016, where service would be extended past the Issaquah Highlands Park-and-Ride to Swedish Medical Center Issaquah, and service at the far southwest end of the route near Issaquah High School would be eliminated.

Respondent skipped this question

Q11: Thank you for taking the time to complete this survey. If you share your email address as a way to stay informed, we'll subscribe you to the Metro Matters email list. Please enter your email address here.

Respondent skipped this question

#22



COMPLETE

Collector: Web Link 1 (Web Link)

Started: Thursday, May 28, 2015 11:08:28 AM

Last Modified: Thursday, May 28, 2015 12:21:39 PM

Time Spent: 01:13:11

IP Address: 38.140.26.130

PAGE 2: General travel information

Q1: Where do you live?

Downtown Issaquah

Q2: How often do you use the Route 200?

Occasionally (less than once a week)

Q3: For what purpose to you typically use the Route 200? To get to/from ...

medical appointments,
transfers to other bus routes

Q4: What is your most common destination? Examples include Fred Meyer, Issaquah Transit Center, Siemens, Issaquah High School, etc.

Issaquah Transit Center,
Medical Appts: UW Medical Clinic (Lake Drive stop)
& near 220 Ave SE (take rt 269)

Q5: How often do you go to Swedish Medical Center Issaquah?

Never

PAGE 3: Phase I route changes happening June 8

Q6: On June 8, Route 200 will be extended to the Issaquah Highlands Park-and-Ride via SE Black Nugget Road and Highlands Drive NE to improve rider demand and route performance. This new routing means riders will have a connection between the Issaquah Transit Center, downtown and north Issaquah, and the Issaquah Highlands. To extend the route without requiring additional revenue, two portions will be affected:- The 220th Avenue SE, SE 51st Street and East Lake Sammamish Parkway SE loop north of SE 56th Street, which serves Microsoft, Siemens, Federal Express and other offices, will be discontinued.- The Fred Meyer and Home Depot loop on East Lake Sammamish Parkway SE and SE 62nd Street also will be discontinued. Riders will soon catch the Route 200 on SE Black Nugget Road north of the shopping area instead of boarding in the Fred Meyer parking lot. How will this affect your use of transit?

I will use transit the same

PAGE 4: Phase II route changes proposed for 2016 - Alternatives 1 and 2

Q7: In March 2016, the Route 200 is proposed to be extended to Swedish Medical Center Issaquah in Metro's Alternative 1. How would this change affect your use of transit?

I would use transit the same

Q8: In March 2016, the current route where it travels south of SE Bush Street near Issaquah High School would be eliminated to keep the proposal cost-neutral in Alternative 2. How would this change affect your use of transit?

I would use transit the same

Q9: Do you prefer Alternative 1 or 2?

Alternative 2 – end at Issaquah Highlands Park-and-Ride with 30-minute frequency

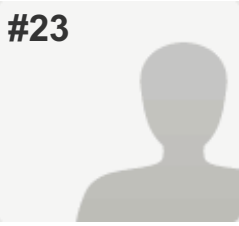
Q10: Please share any additional feedback you have about the Route 200 changes proposed for March 2016, where service would be extended past the Issaquah Highlands Park-and-Ride to Swedish Medical Center Issaquah, and service at the far southwest end of the route near Issaquah High School would be eliminated.

More frequent trips would be better.

Q11: Thank you for taking the time to complete this survey. If you share your email address as a way to stay informed, we'll subscribe you to the Metro Matters email list. Please enter your email address here.

Respondent skipped this question

#23

**COMPLETE****Collector:** Web Link 1 (Web Link)**Started:** Thursday, May 28, 2015 12:34:35 PM**Last Modified:** Thursday, May 28, 2015 12:48:14 PM**Time Spent:** 00:13:38**IP Address:** 161.181.53.10

PAGE 2: General travel information

Q1: Where do you live?	South Issaquah
Q2: How often do you use the Route 200?	Occasionally (less than once a week)
Q3: For what purpose to you typically use the Route 200? To get to/from ...	recreational activities and fun
Q4: What is your most common destination? Examples include Fred Meyer, Issaquah Transit Center, Siemens, Issaquah High School, etc.	<i>Respondent skipped this question</i>
Q5: How often do you go to Swedish Medical Center Issaquah?	Never


PAGE 3: Phase I route changes happening June 8

Q6: On June 8, Route 200 will be extended to the Issaquah Highlands Park-and-Ride via SE Black Nugget Road and Highlands Drive NE to improve rider demand and route performance. This new routing means riders will have a connection between the Issaquah Transit Center, downtown and north Issaquah, and the Issaquah Highlands. To extend the route without requiring additional revenue, two portions will be affected:- The 220th Avenue SE, SE 51st Street and East Lake Sammamish Parkway SE loop north of SE 56th Street, which serves Microsoft, Siemens, Federal Express and other offices, will be discontinued.- The Fred Meyer and Home Depot loop on East Lake Sammamish Parkway SE and SE 62nd Street also will be discontinued. Riders will soon catch the Route 200 on SE Black Nugget Road north of the shopping area instead of boarding in the Fred Meyer parking lot. How will this affect your use of transit?	I will use transit less
--	-------------------------

PAGE 4: Phase II route changes proposed for 2016 - Alternatives 1 and 2

Route 200

Q7: In March 2016, the Route 200 is proposed to be extended to Swedish Medical Center Issaquah in Metro's Alternative 1. How would this change affect your use of transit?	I don't know
Q8: In March 2016, the current route where it travels south of SE Bush Street near Issaquah High School would be eliminated to keep the proposal cost-neutral in Alternative 2. How would this change affect your use of transit?	I would use transit less
Q9: Do you prefer Alternative 1 or 2?	Neither – do not eliminate the Issaquah High School loop
Q10: Please share any additional feedback you have about the Route 200 changes proposed for March 2016, where service would be extended past the Issaquah Highlands Park-and-Ride to Swedish Medical Center Issaquah, and service at the far southwest end of the route near Issaquah High School would be eliminated.	<i>Respondent skipped this question</i>
Q11: Thank you for taking the time to complete this survey. If you share your email address as a way to stay informed, we'll subscribe you to the Metro Matters email list. Please enter your email address here.	peterroppo@gmail.com

#24	COMPLETE
	Collector: Web Link 1 (Web Link) Started: Thursday, May 28, 2015 2:11:40 PM Last Modified: Thursday, May 28, 2015 2:14:40 PM Time Spent: 00:03:00 IP Address: 216.9.29.162

PAGE 2: General travel information

Q1: Where do you live?	Issaquah Highlands
Q2: How often do you use the Route 200?	1 to 2 days a week

Route 200

Q3: For what purpose to you typically use the Route 200? To get to/from ... school, shopping and errands,
recreational activities and fun,
transfers to other bus routes

Q4: What is your most common destination? Examples include Fred Meyer, Issaquah Transit Center, Siemens, Issaquah High School, etc.

Fred Meyer

Q5: How often do you go to Swedish Medical Center Issaquah? Several times a week

PAGE 3: Phase I route changes happening June 8

Q6: On June 8, Route 200 will be extended to the Issaquah Highlands Park-and-Ride via SE Black Nugget Road and Highlands Drive NE to improve rider demand and route performance. This new routing means riders will have a connection between the Issaquah Transit Center, downtown and north Issaquah, and the Issaquah Highlands. To extend the route without requiring additional revenue, two portions will be affected:- The 220th Avenue SE, SE 51st Street and East Lake Sammamish Parkway SE loop north of SE 56th Street, which serves Microsoft, Siemens, Federal Express and other offices, will be discontinued.- The Fred Meyer and Home Depot loop on East Lake Sammamish Parkway SE and SE 62nd Street also will be discontinued. Riders will soon catch the Route 200 on SE Black Nugget Road north of the shopping area instead of boarding in the Fred Meyer parking lot. How will this affect your use of transit?

I will use transit more

PAGE 4: Phase II route changes proposed for 2016 - Alternatives 1 and 2

Q7: In March 2016, the Route 200 is proposed to be extended to Swedish Medical Center Issaquah in Metro's Alternative 1. How would this change affect your use of transit?

I would use transit more

Q8: In March 2016, the current route where it travels south of SE Bush Street near Issaquah High School would be eliminated to keep the proposal cost-neutral in Alternative 2. How would this change affect your use of transit?

I would use transit the same

Route 200

Q9: Do you prefer Alternative 1 or 2?

Alternative 1 – extend to Swedish Medical Center Issaquah with 40-minute frequency

Q10: Please share any additional feedback you have about the Route 200 changes proposed for March 2016, where service would be extended past the Issaquah Highlands Park-and-Ride to Swedish Medical Center Issaquah, and service at the far southwest end of the route near Issaquah High School would be eliminated.

Why not just make a full circle? Run one bus counter-clockwise and another clockwise.

Q11: Thank you for taking the time to complete this survey. If you share your email address as a way to stay informed, we'll subscribe you to the Metro Matters email list. Please enter your email address here.

Respondent skipped this question

#25



COMPLETE

Collector: Web Link 1 (Web Link)

Started: Thursday, May 28, 2015 7:01:07 PM

Last Modified: Thursday, May 28, 2015 7:05:06 PM

Time Spent: 00:03:59

IP Address: 216.9.29.90

PAGE 2: General travel information

Q1: Where do you live?

Issaquah Highlands

Q2: How often do you use the Route 200?

1 to 2 days a week

Q3: For what purpose to you typically use the Route 200? To get to/from ...

shopping and errands,
transfers to other bus routes

Q4: What is your most common destination? Examples include Fred Meyer, Issaquah Transit Center, Siemens, Issaquah High School, etc.

Fred Meyer, Library, Target

Q5: How often do you go to Swedish Medical Center Issaquah?

Several times a year

PAGE 3: Phase I route changes happening June 8

Q6: On June 8, Route 200 will be extended to the Issaquah Highlands Park-and-Ride via SE Black Nugget Road and Highlands Drive NE to improve rider demand and route performance. This new routing means riders will have a connection between the Issaquah Transit Center, downtown and north Issaquah, and the Issaquah Highlands. To extend the route without requiring additional revenue, two portions will be affected:- The 220th Avenue SE, SE 51st Street and East Lake Sammamish Parkway SE loop north of SE 56th Street, which serves Microsoft, Siemens, Federal Express and other offices, will be discontinued.- The Fred Meyer and Home Depot loop on East Lake Sammamish Parkway SE and SE 62nd Street also will be discontinued. Riders will soon catch the Route 200 on SE Black Nugget Road north of the shopping area instead of boarding in the Fred Meyer parking lot. How will this affect your use of transit?

I will use transit less

PAGE 4: Phase II route changes proposed for 2016 - Alternatives 1 and 2

Q7: In March 2016, the Route 200 is proposed to be extended to Swedish Medical Center Issaquah in Metro's Alternative 1. How would this change affect your use of transit?

I would use transit more

Q8: In March 2016, the current route where it travels south of SE Bush Street near Issaquah High School would be eliminated to keep the proposal cost-neutral in Alternative 2. How would this change affect your use of transit?

I would use transit the same

Q9: Do you prefer Alternative 1 or 2?

Neither – do not eliminate the Issaquah High School loop

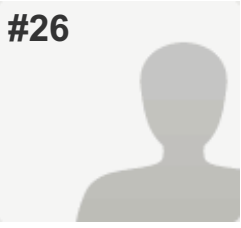
Q10: Please share any additional feedback you have about the Route 200 changes proposed for March 2016, where service would be extended past the Issaquah Highlands Park-and-Ride to Swedish Medical Center Issaquah, and service at the far southwest end of the route near Issaquah High School would be eliminated.

Respondent skipped this question

Q11: Thank you for taking the time to complete this survey. If you share your email address as a way to stay informed, we'll subscribe you to the Metro Matters email list. Please enter your email address here.

aani001@yahoo.com

#26

**COMPLETE**

Collector: Web Link 1 (Web Link)
Started: Thursday, May 28, 2015 9:11:49 PM
Last Modified: Thursday, May 28, 2015 9:20:29 PM
Time Spent: 00:08:39
IP Address: 108.213.81.76

PAGE 2: General travel information

Q1: Where do you live?	Issaquah Highlands
Q2: How often do you use the Route 200?	Never
Q3: For what purpose do you typically use the Route 200? To get to/from ...	<i>Respondent skipped this question</i>
Q4: What is your most common destination? Examples include Fred Meyer, Issaquah Transit Center, Siemens, Issaquah High School, etc.	Issaquah High School
Q5: How often do you go to Swedish Medical Center Issaquah?	Several times a week


PAGE 3: Phase I route changes happening June 8

Q6: On June 8, Route 200 will be extended to the Issaquah Highlands Park-and-Ride via SE Black Nugget Road and Highlands Drive NE to improve rider demand and route performance. This new routing means riders will have a connection between the Issaquah Transit Center, downtown and north Issaquah, and the Issaquah Highlands. To extend the route without requiring additional revenue, two portions will be affected:- The 220th Avenue SE, SE 51st Street and East Lake Sammamish Parkway SE loop north of SE 56th Street, which serves Microsoft, Siemens, Federal Express and other offices, will be discontinued.- The Fred Meyer and Home Depot loop on East Lake Sammamish Parkway SE and SE 62nd Street also will be discontinued. Riders will soon catch the Route 200 on SE Black Nugget Road north of the shopping area instead of boarding in the Fred Meyer parking lot. How will this affect your use of transit?	I don't know
--	--------------

PAGE 4: Phase II route changes proposed for 2016 - Alternatives 1 and 2

<p>Q7: In March 2016, the Route 200 is proposed to be extended to Swedish Medical Center Issaquah in Metro's Alternative 1. How would this change affect your use of transit?</p>	<p>I would use transit more</p>
<p>Q8: In March 2016, the current route where it travels south of SE Bush Street near Issaquah High School would be eliminated to keep the proposal cost-neutral in Alternative 2. How would this change affect your use of transit?</p>	<p>I don't know</p>
<p>Q9: Do you prefer Alternative 1 or 2?</p>	<p>I don't know</p>
<p>Q10: Please share any additional feedback you have about the Route 200 changes proposed for March 2016, where service would be extended past the Issaquah Highlands Park-and-Ride to Swedish Medical Center Issaquah, and service at the far southwest end of the route near Issaquah High School would be eliminated.</p>	
<p>Please consider Alternative 1 while keeping the IHS stop. There are a lot of high school kids in the Highlands that would benefit from the ability to ride from the Highlands to the high school. Parking at IHS has been greatly diminished so having an alternate form of transportation would be great.</p>	
<p>Q11: Thank you for taking the time to complete this survey. If you share your email address as a way to stay informed, we'll subscribe you to the Metro Matters email list. Please enter your email address here.</p>	<p><i>Respondent skipped this question</i></p>

#27



COMPLETE

Collector: Web Link 1 (Web Link)
Started: Friday, May 29, 2015 9:03:54 AM
Last Modified: Friday, May 29, 2015 9:37:53 AM
Time Spent: 00:33:59
IP Address: 164.90.32.2

PAGE 2: General travel information

<p>Q1: Where do you live?</p>	<p>Downtown Issaquah</p>
<p>Q2: How often do you use the Route 200?</p>	<p>Occasionally (less than once a week)</p>

Route 200

Q3: For what purpose to you typically use the Route 200? To get to/from ... shopping and errands, medical appointments, transfers to other bus routes

Q4: What is your most common destination? Examples include Fred Meyer, Issaquah Transit Center, Siemens, Issaquah High School, etc.

Issaquah Transit Center

Q5: How often do you go to Swedish Medical Center Issaquah? Several times a year

PAGE 3: Phase I route changes happening June 8

Q6: On June 8, Route 200 will be extended to the Issaquah Highlands Park-and-Ride via SE Black Nugget Road and Highlands Drive NE to improve rider demand and route performance. This new routing means riders will have a connection between the Issaquah Transit Center, downtown and north Issaquah, and the Issaquah Highlands. To extend the route without requiring additional revenue, two portions will be affected:- The 220th Avenue SE, SE 51st Street and East Lake Sammamish Parkway SE loop north of SE 56th Street, which serves Microsoft, Siemens, Federal Express and other offices, will be discontinued.- The Fred Meyer and Home Depot loop on East Lake Sammamish Parkway SE and SE 62nd Street also will be discontinued. Riders will soon catch the Route 200 on SE Black Nugget Road north of the shopping area instead of boarding in the Fred Meyer parking lot. How will this affect your use of transit?

I will use transit more

PAGE 4: Phase II route changes proposed for 2016 - Alternatives 1 and 2

Q7: In March 2016, the Route 200 is proposed to be extended to Swedish Medical Center Issaquah in Metro's Alternative 1. How would this change affect your use of transit?

I would use transit the same

Q8: In March 2016, the current route where it travels south of SE Bush Street near Issaquah High School would be eliminated to keep the proposal cost-neutral in Alternative 2. How would this change affect your use of transit?

I would use transit the same

Q9: Do you prefer Alternative 1 or 2?

I don't know

Route 200

Q10: Please share any additional feedback you have about the Route 200 changes proposed for March 2016, where service would be extended past the Issaquah Highlands Park-and-Ride to Swedish Medical Center Issaquah, and service at the far southwest end of the route near Issaquah High School would be eliminated.

The extension to the Highlands is a welcome addition.

However, Route 200 was already extremely cumbersome to use, and this extension tips it over into the absurd.

The coverage area is a 2-mile diameter circle. It seems like it should be possible to complete the circle of the route by coming down Highlands Drive to Sunset. With two coaches going opposite directions around that circle, the travel time between most destinations is halved without a huge impact on headways.

As an able bodied person I can walk many places along this route before the bus would get me there.

It seems like there are other places the route could be smoothed out for efficiency, too. A few stops along NW Sammamish Road instead of the slow-motion trudge through Pickering Place. Straightening out the route to the Issaquah Transit Center by taking Newport between Maple and RT900.

And of course expanding the hours of operation would be helpful, extending into the evening and adding weekend service would make this route much more attractive. No, I don't know where the money for that would come from.

Q11: Thank you for taking the time to complete this survey. If you share your email address as a way to stay informed, we'll subscribe you to the Metro Matters email list. Please enter your email address here.

jeffy@tomecat.com

#28



COMPLETE

Collector: Web Link 1 (Web Link)

Started: Wednesday, June 03, 2015 11:21:56 AM

Last Modified: Wednesday, June 03, 2015 11:23:49 AM

Time Spent: 00:01:52

IP Address: 131.107.160.90

PAGE 2: General travel information

Q1: Where do you live?

Downtown Issaquah

Q2: How often do you use the Route 200?

Occasionally (less than once a week)

Q3: For what purpose to you typically use the Route 200? To get to/from ...

work, shopping and errands

Q4: What is your most common destination? Examples include Fred Meyer, Issaquah Transit Center, Siemens, Issaquah High School, etc.

Respondent skipped this question

Q5: How often do you go to Swedish Medical Center Issaquah? Several times a year

PAGE 3: Phase I route changes happening June 8

Q6: On June 8, Route 200 will be extended to the Issaquah Highlands Park-and-Ride via SE Black Nugget Road and Highlands Drive NE to improve rider demand and route performance. This new routing means riders will have a connection between the Issaquah Transit Center, downtown and north Issaquah, and the Issaquah Highlands. To extend the route without requiring additional revenue, two portions will be affected:- The 220th Avenue SE, SE 51st Street and East Lake Sammamish Parkway SE loop north of SE 56th Street, which serves Microsoft, Siemens, Federal Express and other offices, will be discontinued.- The Fred Meyer and Home Depot loop on East Lake Sammamish Parkway SE and SE 62nd Street also will be discontinued. Riders will soon catch the Route 200 on SE Black Nugget Road north of the shopping area instead of boarding in the Fred Meyer parking lot. How will this affect your use of transit?

I will use transit the same

PAGE 4: Phase II route changes proposed for 2016 - Alternatives 1 and 2

Q7: In March 2016, the Route 200 is proposed to be extended to Swedish Medical Center Issaquah in Metro's Alternative 1. How would this change affect your use of transit?

I don't know

Q8: In March 2016, the current route where it travels south of SE Bush Street near Issaquah High School would be eliminated to keep the proposal cost-neutral in Alternative 2. How would this change affect your use of transit?

I don't know

Q9: Do you prefer Alternative 1 or 2?

I don't know

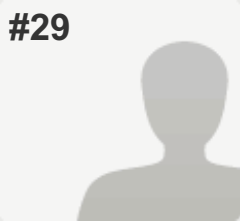
Q10: Please share any additional feedback you have about the Route 200 changes proposed for March 2016, where service would be extended past the Issaquah Highlands Park-and-Ride to Swedish Medical Center Issaquah, and service at the far southwest end of the route near Issaquah High School would be eliminated.

The changes to the route are somewhat irrelevant considering this route only runs for limited hours M-F. I would rather restore service to more hours and on weekends.

Q11: Thank you for taking the time to complete this survey. If you share your email address as a way to stay informed, we'll subscribe you to the Metro Matters email list. Please enter your email address here.

jcolch@yahoo.com

#29



COMPLETE

Collector: Web Link 1 (Web Link)

Started: Wednesday, June 03, 2015 2:46:04 PM

Last Modified: Wednesday, June 03, 2015 2:48:19 PM

Time Spent: 00:02:14

IP Address: 12.54.94.108

PAGE 2: General travel information

Q1: Where do you live?

Other (please specify) Phinney Ridge

Q2: How often do you use the Route 200?

Occasionally (less than once a week)

Q3: For what purpose to you typically use the Route 200? To get to/from ...

work

Q4: What is your most common destination? Examples include Fred Meyer, Issaquah Transit Center, Siemens, Issaquah High School, etc.

Siemens

Q5: How often do you go to Swedish Medical Center Issaquah?

Never

PAGE 3: Phase I route changes happening June 8

Q6: On June 8, Route 200 will be extended to the Issaquah Highlands Park-and-Ride via SE Black Nugget Road and Highlands Drive NE to improve rider demand and route performance. This new routing means riders will have a connection between the Issaquah Transit Center, downtown and north Issaquah, and the Issaquah Highlands. To extend the route without requiring additional revenue, two portions will be affected:- The 220th Avenue SE, SE 51st Street and East Lake Sammamish Parkway SE loop north of SE 56th Street, which serves Microsoft, Siemens, Federal Express and other offices, will be discontinued.- The Fred Meyer and Home Depot loop on East Lake Sammamish Parkway SE and SE 62nd Street also will be discontinued. Riders will soon catch the Route 200 on SE Black Nugget Road north of the shopping area instead of boarding in the Fred Meyer parking lot. How will this affect your use of transit?

I will use transit less

PAGE 4: Phase II route changes proposed for 2016 - Alternatives 1 and 2

Q7: In March 2016, the Route 200 is proposed to be extended to Swedish Medical Center Issaquah in Metro's Alternative 1. How would this change affect your use of transit?

I would use transit less

Q8: In March 2016, the current route where it travels south of SE Bush Street near Issaquah High School would be eliminated to keep the proposal cost-neutral in Alternative 2. How would this change affect your use of transit?

I would use transit the same

Q9: Do you prefer Alternative 1 or 2?

Alternative 2 – end at Issaquah Highlands Park-and-Ride with 30-minute frequency

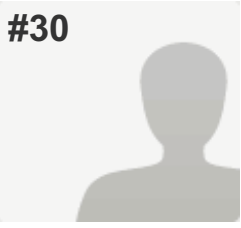
Q10: Please share any additional feedback you have about the Route 200 changes proposed for March 2016, where service would be extended past the Issaquah Highlands Park-and-Ride to Swedish Medical Center Issaquah, and service at the far southwest end of the route near Issaquah High School would be eliminated.

Respondent skipped this question

Q11: Thank you for taking the time to complete this survey. If you share your email address as a way to stay informed, we'll subscribe you to the Metro Matters email list. Please enter your email address here.

Respondent skipped this question

#30

**COMPLETE****Collector:** Web Link 1 (Web Link)**Started:** Wednesday, June 03, 2015 7:31:40 PM**Last Modified:** Wednesday, June 03, 2015 7:34:44 PM**Time Spent:** 00:03:03**IP Address:** 64.184.229.50**PAGE 2: General travel information****Q1: Where do you live?**Other (please specify)
West Issaquah off Newport Way**Q2: How often do you use the Route 200?**

Occasionally (less than once a week)

Q3: For what purpose to you typically use the Route 200? To get to/from ...

shopping and errands

Q4: What is your most common destination? Examples include Fred Meyer, Issaquah Transit Center, Siemens, Issaquah High School, etc.

Fred Meyer

Q5: How often do you go to Swedish Medical Center Issaquah?

Several times a year

PAGE 3: Phase I route changes happening June 8


Q6: On June 8, Route 200 will be extended to the Issaquah Highlands Park-and-Ride via SE Black Nugget Road and Highlands Drive NE to improve rider demand and route performance. This new routing means riders will have a connection between the Issaquah Transit Center, downtown and north Issaquah, and the Issaquah Highlands. To extend the route without requiring additional revenue, two portions will be affected:- The 220th Avenue SE, SE 51st Street and East Lake Sammamish Parkway SE loop north of SE 56th Street, which serves Microsoft, Siemens, Federal Express and other offices, will be discontinued.- The Fred Meyer and Home Depot loop on East Lake Sammamish Parkway SE and SE 62nd Street also will be discontinued. Riders will soon catch the Route 200 on SE Black Nugget Road north of the shopping area instead of boarding in the Fred Meyer parking lot. How will this affect your use of transit?

I will use transit less

PAGE 4: Phase II route changes proposed for 2016 - Alternatives 1 and 2

<p>Q7: In March 2016, the Route 200 is proposed to be extended to Swedish Medical Center Issaquah in Metro's Alternative 1. How would this change affect your use of transit?</p>	<p>I would use transit more</p>
<p>Q8: In March 2016, the current route where it travels south of SE Bush Street near Issaquah High School would be eliminated to keep the proposal cost-neutral in Alternative 2. How would this change affect your use of transit?</p>	<p>I would use transit the same</p>
<p>Q9: Do you prefer Alternative 1 or 2?</p>	<p>Alternative 1 – extend to Swedish Medical Center Issaquah with 40-minute frequency</p>
<p>Q10: Please share any additional feedback you have about the Route 200 changes proposed for March 2016, where service would be extended past the Issaquah Highlands Park-and-Ride to Swedish Medical Center Issaquah, and service at the far southwest end of the route near Issaquah High School would be eliminated.</p>	
<p>You need to take the 200 down Newport Way NW as there is no bus service out there with the cancellation of the 210.</p>	
<p>Q11: Thank you for taking the time to complete this survey. If you share your email address as a way to stay informed, we'll subscribe you to the Metro Matters email list. Please enter your email address here.</p>	<p>seajon@ymail.com</p>

#31



COMPLETE

Collector: Web Link 1 (Web Link)
Started: Thursday, June 04, 2015 1:39:45 PM
Last Modified: Thursday, June 04, 2015 1:46:36 PM
Time Spent: 00:06:51
IP Address: 50.135.16.109

PAGE 2: General travel information

<p>Q1: Where do you live?</p>	<p>Other (please specify) West Issaquah (Talus)</p>
<p>Q2: How often do you use the Route 200?</p>	<p>Never</p>
<p>Q3: For what purpose to you typically use the Route 200? To get to/from ...</p>	<p><i>Respondent skipped this question</i></p>

Q4: What is your most common destination? Examples include Fred Meyer, Issaquah Transit Center, Siemens, Issaquah High School, etc.

downtown

Q5: How often do you go to Swedish Medical Center Issaquah? Several times a year

PAGE 3: Phase I route changes happening June 8

Q6: On June 8, Route 200 will be extended to the Issaquah Highlands Park-and-Ride via SE Black Nugget Road and Highlands Drive NE to improve rider demand and route performance. This new routing means riders will have a connection between the Issaquah Transit Center, downtown and north Issaquah, and the Issaquah Highlands. To extend the route without requiring additional revenue, two portions will be affected:- The 220th Avenue SE, SE 51st Street and East Lake Sammamish Parkway SE loop north of SE 56th Street, which serves Microsoft, Siemens, Federal Express and other offices, will be discontinued.- The Fred Meyer and Home Depot loop on East Lake Sammamish Parkway SE and SE 62nd Street also will be discontinued. Riders will soon catch the Route 200 on SE Black Nugget Road north of the shopping area instead of boarding in the Fred Meyer parking lot. How will this affect your use of transit?

I will use transit the same

PAGE 4: Phase II route changes proposed for 2016 - Alternatives 1 and 2

Q7: In March 2016, the Route 200 is proposed to be extended to Swedish Medical Center Issaquah in Metro's Alternative 1. How would this change affect your use of transit?

I would use transit more

Q8: In March 2016, the current route where it travels south of SE Bush Street near Issaquah High School would be eliminated to keep the proposal cost-neutral in Alternative 2. How would this change affect your use of transit?

I would use transit the same

Q9: Do you prefer Alternative 1 or 2?

Alternative 1 – extend to Swedish Medical Center Issaquah with 40-minute frequency

Route 200

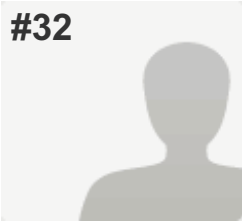
Q10: Please share any additional feedback you have about the Route 200 changes proposed for March 2016, where service would be extended past the Issaquah Highlands Park-and-Ride to Swedish Medical Center Issaquah, and service at the far southwest end of the route near Issaquah High School would be eliminated.

Respondent skipped this question

Q11: Thank you for taking the time to complete this survey. If you share your email address as a way to stay informed, we'll subscribe you to the Metro Matters email list. Please enter your email address here.

Respondent skipped this question

#32



COMPLETE

Collector: Web Link 1 (Web Link)

Started: Sunday, June 07, 2015 10:33:39 AM

Last Modified: Sunday, June 07, 2015 10:37:20 AM

Time Spent: 00:03:40

IP Address: 96.89.147.227

PAGE 2: General travel information

Q1: Where do you live?

Issaquah Highlands

Q2: How often do you use the Route 200?

3 or more days a week

Q3: For what purpose to you typically use the Route 200? To get to/from ...

recreational activities and fun,
transfers to other bus routes

Q4: What is your most common destination? Examples include Fred Meyer, Issaquah Transit Center, Siemens, Issaquah High School, etc.

Target, Trader's Joe, Bank of America, USPS, Top Pot. Etc.

Q5: How often do you go to Swedish Medical Center Issaquah?

Never

PAGE 3: Phase I route changes happening June 8

Q6: On June 8, Route 200 will be extended to the Issaquah Highlands Park-and-Ride via SE Black Nugget Road and Highlands Drive NE to improve rider demand and route performance. This new routing means riders will have a connection between the Issaquah Transit Center, downtown and north Issaquah, and the Issaquah Highlands. To extend the route without requiring additional revenue, two portions will be affected:- The 220th Avenue SE, SE 51st Street and East Lake Sammamish Parkway SE loop north of SE 56th Street, which serves Microsoft, Siemens, Federal Express and other offices, will be discontinued.- The Fred Meyer and Home Depot loop on East Lake Sammamish Parkway SE and SE 62nd Street also will be discontinued. Riders will soon catch the Route 200 on SE Black Nugget Road north of the shopping area instead of boarding in the Fred Meyer parking lot. How will this affect your use of transit?

I will use transit more

PAGE 4: Phase II route changes proposed for 2016 - Alternatives 1 and 2

Q7: In March 2016, the Route 200 is proposed to be extended to Swedish Medical Center Issaquah in Metro's Alternative 1. How would this change affect your use of transit?

I would use transit more

Q8: In March 2016, the current route where it travels south of SE Bush Street near Issaquah High School would be eliminated to keep the proposal cost-neutral in Alternative 2. How would this change affect your use of transit?

I would use transit more

Q9: Do you prefer Alternative 1 or 2?

Alternative 2 – end at Issaquah Highlands Park-and-Ride with 30-minute frequency

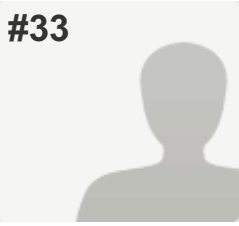
Q10: Please share any additional feedback you have about the Route 200 changes proposed for March 2016, where service would be extended past the Issaquah Highlands Park-and-Ride to Swedish Medical Center Issaquah, and service at the far southwest end of the route near Issaquah High School would be eliminated.

Expand the time frame :D

Q11: Thank you for taking the time to complete this survey. If you share your email address as a way to stay informed, we'll subscribe you to the Metro Matters email list. Please enter your email address here.

ahbuss@outlook.com

#33

**COMPLETE**

Collector: Web Link 1 (Web Link)
Started: Sunday, June 07, 2015 10:31:57 AM
Last Modified: Sunday, June 07, 2015 10:37:27 AM
Time Spent: 00:05:29
IP Address: 96.89.147.227

PAGE 2: General travel information

Q1: Where do you live?	<i>Respondent skipped this question</i>
Q2: How often do you use the Route 200?	3 or more days a week
Q3: For what purpose to you typically use the Route 200? To get to/from ...	shopping and errands, church, recreational activities and fun
Q4: What is your most common destination? Examples include Fred Meyer, Issaquah Transit Center, Siemens, Issaquah High School, etc.	Target, traders joe, usps, Bank of America, top pot, Starbucks, etc
Q5: How often do you go to Swedish Medical Center Issaquah?	Several times a year


PAGE 3: Phase I route changes happening June 8

Q6: On June 8, Route 200 will be extended to the Issaquah Highlands Park-and-Ride via SE Black Nugget Road and Highlands Drive NE to improve rider demand and route performance. This new routing means riders will have a connection between the Issaquah Transit Center, downtown and north Issaquah, and the Issaquah Highlands. To extend the route without requiring additional revenue, two portions will be affected:- The 220th Avenue SE, SE 51st Street and East Lake Sammamish Parkway SE loop north of SE 56th Street, which serves Microsoft, Siemens, Federal Express and other offices, will be discontinued.- The Fred Meyer and Home Depot loop on East Lake Sammamish Parkway SE and SE 62nd Street also will be discontinued. Riders will soon catch the Route 200 on SE Black Nugget Road north of the shopping area instead of boarding in the Fred Meyer parking lot. How will this affect your use of transit?	I will use transit more
--	-------------------------

PAGE 4: Phase II route changes proposed for 2016 - Alternatives 1 and 2

<p>Q7: In March 2016, the Route 200 is proposed to be extended to Swedish Medical Center Issaquah in Metro's Alternative 1. How would this change affect your use of transit?</p>	<p>I would use transit more</p>
<p>Q8: In March 2016, the current route where it travels south of SE Bush Street near Issaquah High School would be eliminated to keep the proposal cost-neutral in Alternative 2. How would this change affect your use of transit?</p>	<p>I would use transit the same</p>
<p>Q9: Do you prefer Alternative 1 or 2?</p>	<p>Alternative 2 – end at Issaquah Highlands Park-and-Ride with 30-minute frequency</p>
<p>Q10: Please share any additional feedback you have about the Route 200 changes proposed for March 2016, where service would be extended past the Issaquah Highlands Park-and-Ride to Swedish Medical Center Issaquah, and service at the far southwest end of the route near Issaquah High School would be eliminated.</p>	
<p>Expand the timeframe to 6pm</p>	
<p>Q11: Thank you for taking the time to complete this survey. If you share your email address as a way to stay informed, we'll subscribe you to the Metro Matters email list. Please enter your email address here.</p>	<p>natashalgraf@hotmail.com</p>

#34



COMPLETE

Collector: Web Link 1 (Web Link)
Started: Sunday, June 07, 2015 10:55:07 AM
Last Modified: Sunday, June 07, 2015 10:56:59 AM
Time Spent: 00:01:51
IP Address: 216.9.30.179

PAGE 2: General travel information

<p>Q1: Where do you live?</p>	<p>Issaquah Highlands</p>
<p>Q2: How often do you use the Route 200?</p>	<p>Never</p>
<p>Q3: For what purpose to you typically use the Route 200? To get to/from ...</p>	<p><i>Respondent skipped this question</i></p>

Route 200

Q4: What is your most common destination?
Examples include Fred Meyer, Issaquah Transit Center, Siemens, Issaquah High School, etc.

Respondent skipped this question

Q5: How often do you go to Swedish Medical Center Issaquah?

Several times a month

PAGE 3: Phase I route changes happening June 8

Q6: On June 8, Route 200 will be extended to the Issaquah Highlands Park-and-Ride via SE Black Nugget Road and Highlands Drive NE to improve rider demand and route performance. This new routing means riders will have a connection between the Issaquah Transit Center, downtown and north Issaquah, and the Issaquah Highlands. To extend the route without requiring additional revenue, two portions will be affected:- The 220th Avenue SE, SE 51st Street and East Lake Sammamish Parkway SE loop north of SE 56th Street, which serves Microsoft, Siemens, Federal Express and other offices, will be discontinued.- The Fred Meyer and Home Depot loop on East Lake Sammamish Parkway SE and SE 62nd Street also will be discontinued. Riders will soon catch the Route 200 on SE Black Nugget Road north of the shopping area instead of boarding in the Fred Meyer parking lot. How will this affect your use of transit?

I will use transit more

PAGE 4: Phase II route changes proposed for 2016 - Alternatives 1 and 2

Q7: In March 2016, the Route 200 is proposed to be extended to Swedish Medical Center Issaquah in Metro's Alternative 1. How would this change affect your use of transit?

I would use transit more

Q8: In March 2016, the current route where it travels south of SE Bush Street near Issaquah High School would be eliminated to keep the proposal cost-neutral in Alternative 2. How would this change affect your use of transit?

I would use transit less

Q9: Do you prefer Alternative 1 or 2?

Alternative 1 – extend to Swedish Medical Center Issaquah with 40-minute frequency

Route 200

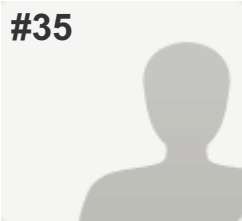
Q10: Please share any additional feedback you have about the Route 200 changes proposed for March 2016, where service would be extended past the Issaquah Highlands Park-and-Ride to Swedish Medical Center Issaquah, and service at the far southwest end of the route near Issaquah High School would be eliminated.

Respondent skipped this question

Q11: Thank you for taking the time to complete this survey. If you share your email address as a way to stay informed, we'll subscribe you to the Metro Matters email list. Please enter your email address here.

Respondent skipped this question

#35



INCOMPLETE

Collector: Web Link 1 (Web Link)

Started: Sunday, June 07, 2015 11:02:35 AM

Last Modified: Sunday, June 07, 2015 11:03:22 AM

Time Spent: 00:00:47

IP Address: 216.9.30.245

PAGE 2: General travel information

Q1: Where do you live?

Issaquah Highlands

Q2: How often do you use the Route 200?

Never

Q3: For what purpose to you typically use the Route 200? To get to/from ...

Respondent skipped this question

Q4: What is your most common destination? Examples include Fred Meyer, Issaquah Transit Center, Siemens, Issaquah High School, etc.

Respondent skipped this question

Q5: How often do you go to Swedish Medical Center Issaquah?

Never

PAGE 3: Phase I route changes happening June 8

Q6: On June 8, Route 200 will be extended to the Issaquah Highlands Park-and-Ride via SE Black Nugget Road and Highlands Drive NE to improve rider demand and route performance. This new routing means riders will have a connection between the Issaquah Transit Center, downtown and north Issaquah, and the Issaquah Highlands. To extend the route without requiring additional revenue, two portions will be affected:- The 220th Avenue SE, SE 51st Street and East Lake Sammamish Parkway SE loop north of SE 56th Street, which serves Microsoft, Siemens, Federal Express and other offices, will be discontinued.- The Fred Meyer and Home Depot loop on East Lake Sammamish Parkway SE and SE 62nd Street also will be discontinued. Riders will soon catch the Route 200 on SE Black Nugget Road north of the shopping area instead of boarding in the Fred Meyer parking lot. How will this affect your use of transit?

Respondent skipped this question

PAGE 4: Phase II route changes proposed for 2016 - Alternatives 1 and 2

Q7: In March 2016, the Route 200 is proposed to be extended to Swedish Medical Center Issaquah in Metro's Alternative 1. How would this change affect your use of transit?

Respondent skipped this question

Q8: In March 2016, the current route where it travels south of SE Bush Street near Issaquah High School would be eliminated to keep the proposal cost-neutral in Alternative 2. How would this change affect your use of transit?

Respondent skipped this question

Q9: Do you prefer Alternative 1 or 2?

Respondent skipped this question

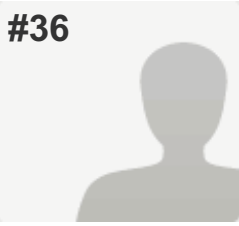
Q10: Please share any additional feedback you have about the Route 200 changes proposed for March 2016, where service would be extended past the Issaquah Highlands Park-and-Ride to Swedish Medical Center Issaquah, and service at the far southwest end of the route near Issaquah High School would be eliminated.

Respondent skipped this question

Q11: Thank you for taking the time to complete this survey. If you share your email address as a way to stay informed, we'll subscribe you to the Metro Matters email list. Please enter your email address here.

Respondent skipped this question

#36

**COMPLETE**

Collector: Web Link 1 (Web Link)
Started: Sunday, June 07, 2015 1:13:14 PM
Last Modified: Sunday, June 07, 2015 1:15:20 PM
Time Spent: 00:02:06
IP Address: 216.9.31.46

PAGE 2: General travel information

Q1: Where do you live?	Issaquah Highlands
Q2: How often do you use the Route 200?	Never
Q3: For what purpose to you typically use the Route 200? To get to/from ...	<i>Respondent skipped this question</i>
Q4: What is your most common destination? Examples include Fred Meyer, Issaquah Transit Center, Siemens, Issaquah High School, etc.	<i>Respondent skipped this question</i>
Q5: How often do you go to Swedish Medical Center Issaquah?	Several times a week


PAGE 3: Phase I route changes happening June 8

<p>Q6: On June 8, Route 200 will be extended to the Issaquah Highlands Park-and-Ride via SE Black Nugget Road and Highlands Drive NE to improve rider demand and route performance. This new routing means riders will have a connection between the Issaquah Transit Center, downtown and north Issaquah, and the Issaquah Highlands. To extend the route without requiring additional revenue, two portions will be affected:- The 220th Avenue SE, SE 51st Street and East Lake Sammamish Parkway SE loop north of SE 56th Street, which serves Microsoft, Siemens, Federal Express and other offices, will be discontinued.- The Fred Meyer and Home Depot loop on East Lake Sammamish Parkway SE and SE 62nd Street also will be discontinued. Riders will soon catch the Route 200 on SE Black Nugget Road north of the shopping area instead of boarding in the Fred Meyer parking lot. How will this affect your use of transit?</p>	I will use transit more
---	-------------------------

PAGE 4: Phase II route changes proposed for 2016 - Alternatives 1 and 2

<p>Q7: In March 2016, the Route 200 is proposed to be extended to Swedish Medical Center Issaquah in Metro's Alternative 1. How would this change affect your use of transit?</p>	<p>I would use transit more</p>
<p>Q8: In March 2016, the current route where it travels south of SE Bush Street near Issaquah High School would be eliminated to keep the proposal cost-neutral in Alternative 2. How would this change affect your use of transit?</p>	<p>I would use transit less</p>
<p>Q9: Do you prefer Alternative 1 or 2?</p>	<p>Alternative 1 – extend to Swedish Medical Center Issaquah with 40-minute frequency</p>
<p>Q10: Please share any additional feedback you have about the Route 200 changes proposed for March 2016, where service would be extended past the Issaquah Highlands Park-and-Ride to Swedish Medical Center Issaquah, and service at the far southwest end of the route near Issaquah High School would be eliminated.</p>	<p><i>Respondent skipped this question</i></p>
<p>Q11: Thank you for taking the time to complete this survey. If you share your email address as a way to stay informed, we'll subscribe you to the Metro Matters email list. Please enter your email address here.</p>	<p><i>Respondent skipped this question</i></p>

#37



COMPLETE

Collector: Web Link 1 (Web Link)
Started: Sunday, June 07, 2015 1:38:14 PM
Last Modified: Sunday, June 07, 2015 1:49:22 PM
Time Spent: 00:11:08
IP Address: 45.50.186.36

PAGE 2: General travel information

<p>Q1: Where do you live?</p>	<p>Issaquah Highlands</p>
<p>Q2: How often do you use the Route 200?</p>	<p>Occasionally (less than once a week)</p>

Route 200

Q3: For what purpose to you typically use the Route 200? To get to/from ... shopping and errands,
transfers to other bus routes

Q4: What is your most common destination? Examples include Fred Meyer, Issaquah Transit Center, Siemens, Issaquah High School, etc.

Fred Meyer

Q5: How often do you go to Swedish Medical Center Issaquah? Several times a year

PAGE 3: Phase I route changes happening June 8

Q6: On June 8, Route 200 will be extended to the Issaquah Highlands Park-and-Ride via SE Black Nugget Road and Highlands Drive NE to improve rider demand and route performance. This new routing means riders will have a connection between the Issaquah Transit Center, downtown and north Issaquah, and the Issaquah Highlands. To extend the route without requiring additional revenue, two portions will be affected:- The 220th Avenue SE, SE 51st Street and East Lake Sammamish Parkway SE loop north of SE 56th Street, which serves Microsoft, Siemens, Federal Express and other offices, will be discontinued.- The Fred Meyer and Home Depot loop on East Lake Sammamish Parkway SE and SE 62nd Street also will be discontinued. Riders will soon catch the Route 200 on SE Black Nugget Road north of the shopping area instead of boarding in the Fred Meyer parking lot. How will this affect your use of transit? I will use transit more

PAGE 4: Phase II route changes proposed for 2016 - Alternatives 1 and 2

Q7: In March 2016, the Route 200 is proposed to be extended to Swedish Medical Center Issaquah in Metro's Alternative 1. How would this change affect your use of transit? I would use transit more

Q8: In March 2016, the current route where it travels south of SE Bush Street near Issaquah High School would be eliminated to keep the proposal cost-neutral in Alternative 2. How would this change affect your use of transit? I would use transit the same

Q9: Do you prefer Alternative 1 or 2? Alternative 1 – extend to Swedish Medical Center Issaquah with 40-minute frequency

Route 200

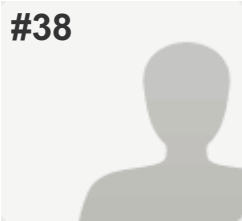
Q10: Please share any additional feedback you have about the Route 200 changes proposed for March 2016, where service would be extended past the Issaquah Highlands Park-and-Ride to Swedish Medical Center Issaquah, and service at the far southwest end of the route near Issaquah High School would be eliminated.

Respondent skipped this question

Q11: Thank you for taking the time to complete this survey. If you share your email address as a way to stay informed, we'll subscribe you to the Metro Matters email list. Please enter your email address here.

melodygreene365@yahoo.com

#38



COMPLETE

Collector: Web Link 1 (Web Link)

Started: Sunday, June 07, 2015 3:03:25 PM

Last Modified: Sunday, June 07, 2015 3:04:58 PM

Time Spent: 00:01:33

IP Address: 216.9.28.226

PAGE 2: General travel information

Q1: Where do you live?

Issaquah Highlands

Q2: How often do you use the Route 200?

Occasionally (less than once a week)

Q3: For what purpose to you typically use the Route 200? To get to/from ...

shopping and errands

Q4: What is your most common destination? Examples include Fred Meyer, Issaquah Transit Center, Siemens, Issaquah High School, etc.

Respondent skipped this question

Q5: How often do you go to Swedish Medical Center Issaquah?

Never

PAGE 3: Phase I route changes happening June 8

Q6: On June 8, Route 200 will be extended to the Issaquah Highlands Park-and-Ride via SE Black Nugget Road and Highlands Drive NE to improve rider demand and route performance. This new routing means riders will have a connection between the Issaquah Transit Center, downtown and north Issaquah, and the Issaquah Highlands. To extend the route without requiring additional revenue, two portions will be affected:- The 220th Avenue SE, SE 51st Street and East Lake Sammamish Parkway SE loop north of SE 56th Street, which serves Microsoft, Siemens, Federal Express and other offices, will be discontinued.- The Fred Meyer and Home Depot loop on East Lake Sammamish Parkway SE and SE 62nd Street also will be discontinued. Riders will soon catch the Route 200 on SE Black Nugget Road north of the shopping area instead of boarding in the Fred Meyer parking lot. How will this affect your use of transit?

I will use transit more

PAGE 4: Phase II route changes proposed for 2016 - Alternatives 1 and 2

Q7: In March 2016, the Route 200 is proposed to be extended to Swedish Medical Center Issaquah in Metro's Alternative 1. How would this change affect your use of transit?

I don't know

Q8: In March 2016, the current route where it travels south of SE Bush Street near Issaquah High School would be eliminated to keep the proposal cost-neutral in Alternative 2. How would this change affect your use of transit?

I don't know

Q9: Do you prefer Alternative 1 or 2?

Alternative 2 – end at Issaquah Highlands Park-and-Ride with 30-minute frequency

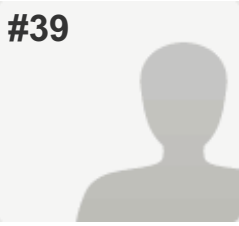
Q10: Please share any additional feedback you have about the Route 200 changes proposed for March 2016, where service would be extended past the Issaquah Highlands Park-and-Ride to Swedish Medical Center Issaquah, and service at the far southwest end of the route near Issaquah High School would be eliminated.

Respondent skipped this question

Q11: Thank you for taking the time to complete this survey. If you share your email address as a way to stay informed, we'll subscribe you to the Metro Matters email list. Please enter your email address here.

Respondent skipped this question

#39

**COMPLETE****Collector:** Web Link 1 (Web Link)**Started:** Monday, June 08, 2015 8:09:51 PM**Last Modified:** Monday, June 08, 2015 8:16:47 PM**Time Spent:** 00:06:56**IP Address:** 216.9.29.155**PAGE 2: General travel information**


Q1: Where do you live?	Issaquah Highlands
Q2: How often do you use the Route 200?	Never
Q3: For what purpose to you typically use the Route 200? To get to/from ...	shopping and errands, recreational activities and fun
Q4: What is your most common destination? Examples include Fred Meyer, Issaquah Transit Center, Siemens, Issaquah High School, etc.	Target/REI/Trader Joe's, Front Street shops/restaurants, Issaquah-Lake Sammamish Trail
Q5: How often do you go to Swedish Medical Center Issaquah?	Several times a week

PAGE 3: Phase I route changes happening June 8

Q6: On June 8, Route 200 will be extended to the Issaquah Highlands Park-and-Ride via SE Black Nugget Road and Highlands Drive NE to improve rider demand and route performance. This new routing means riders will have a connection between the Issaquah Transit Center, downtown and north Issaquah, and the Issaquah Highlands. To extend the route without requiring additional revenue, two portions will be affected:- The 220th Avenue SE, SE 51st Street and East Lake Sammamish Parkway SE loop north of SE 56th Street, which serves Microsoft, Siemens, Federal Express and other offices, will be discontinued.- The Fred Meyer and Home Depot loop on East Lake Sammamish Parkway SE and SE 62nd Street also will be discontinued. Riders will soon catch the Route 200 on SE Black Nugget Road north of the shopping area instead of boarding in the Fred Meyer parking lot. How will this affect your use of transit?	I will use transit the same
--	-----------------------------

PAGE 4: Phase II route changes proposed for 2016 - Alternatives 1 and 2

<p>Q7: In March 2016, the Route 200 is proposed to be extended to Swedish Medical Center Issaquah in Metro's Alternative 1. How would this change affect your use of transit?</p>	<p>I would use transit more</p>
<p>Q8: In March 2016, the current route where it travels south of SE Bush Street near Issaquah High School would be eliminated to keep the proposal cost-neutral in Alternative 2. How would this change affect your use of transit?</p>	<p>I don't know</p>
<p>Q9: Do you prefer Alternative 1 or 2?</p>	<p>Alternative 1 – extend to Swedish Medical Center Issaquah with 40-minute frequency</p>
<p>Q10: Please share any additional feedback you have about the Route 200 changes proposed for March 2016, where service would be extended past the Issaquah Highlands Park-and-Ride to Swedish Medical Center Issaquah, and service at the far southwest end of the route near Issaquah High School would be eliminated.</p>	
<p>Hate to see any portion of the route eliminated. Would love to see one of the routes add a stop on the Village Green circle at the top of Park Dr. in the Highlands residential area. This is over one mile from the Issaquah Highlands P&R and comprises a lot of residential traffic on Park Drive.</p>	
<p>Q11: Thank you for taking the time to complete this survey. If you share your email address as a way to stay informed, we'll subscribe you to the Metro Matters email list. Please enter your email address here.</p>	<p>drchele@hotmail.com</p>

<p>#40</p>		<p>COMPLETE</p>	<p>Collector: Web Link 1 (Web Link) Started: Wednesday, June 10, 2015 1:09:24 PM Last Modified: Wednesday, June 10, 2015 1:23:28 PM Time Spent: 00:14:03 IP Address: 173.10.110.41</p>
------------	---	------------------------	---

PAGE 2: General travel information

<p>Q1: Where do you live?</p>	<p>Downtown Issaquah</p>
<p>Q2: How often do you use the Route 200?</p>	<p>3 or more days a week</p>

Route 200

Q3: For what purpose to you typically use the Route 200? To get to/from ... shopping and errands,
transfers to other bus routes

Q4: What is your most common destination? Examples include Fred Meyer, Issaquah Transit Center, Siemens, Issaquah High School, etc.

fredmeyer

Q5: How often do you go to Swedish Medical Center Issaquah? Never

PAGE 3: Phase I route changes happening June 8

Q6: On June 8, Route 200 will be extended to the Issaquah Highlands Park-and-Ride via SE Black Nugget Road and Highlands Drive NE to improve rider demand and route performance. This new routing means riders will have a connection between the Issaquah Transit Center, downtown and north Issaquah, and the Issaquah Highlands. To extend the route without requiring additional revenue, two portions will be affected:- The 220th Avenue SE, SE 51st Street and East Lake Sammamish Parkway SE loop north of SE 56th Street, which serves Microsoft, Siemens, Federal Express and other offices, will be discontinued.- The Fred Meyer and Home Depot loop on East Lake Sammamish Parkway SE and SE 62nd Street also will be discontinued. Riders will soon catch the Route 200 on SE Black Nugget Road north of the shopping area instead of boarding in the Fred Meyer parking lot. How will this affect your use of transit? I don't know

PAGE 4: Phase II route changes proposed for 2016 - Alternatives 1 and 2

Q7: In March 2016, the Route 200 is proposed to be extended to Swedish Medical Center Issaquah in Metro's Alternative 1. How would this change affect your use of transit? I would use transit more

Q8: In March 2016, the current route where it travels south of SE Bush Street near Issaquah High School would be eliminated to keep the proposal cost-neutral in Alternative 2. How would this change affect your use of transit? I would use transit more

Q9: Do you prefer Alternative 1 or 2? Alternative 2 – end at Issaquah Highlands Park-and-Ride with 30-minute frequency

Route 200

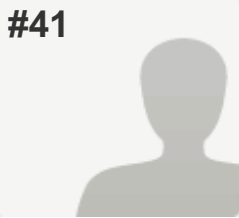
Q10: Please share any additional feedback you have about the Route 200 changes proposed for March 2016, where service would be extended past the Issaquah Highlands Park-and-Ride to Swedish Medical Center Issaquah, and service at the far southwest end of the route near Issaquah High School would be eliminated.

It's a good idea to have the 200 bus go as far as Swedish - however, what we really need is for the 200 to be extended a couple of more hours in the morning, to give us more time to transfer at the Park&Ride. Removing the service at the far southwest is really very practical, it saves a lot of time and helps so many of us. We would really appreciate it if Metro would consider adding 2 hours in the morning, if possible. Thanks so very much.

Q11: Thank you for taking the time to complete this survey. If you share your email address as a way to stay informed, we'll subscribe you to the Metro Matters email list. Please enter your email address here.

coynemary36@gmail.com

#41



COMPLETE

Collector: Web Link 1 (Web Link)
Started: Sunday, June 14, 2015 8:57:19 PM
Last Modified: Sunday, June 14, 2015 9:00:52 PM
Time Spent: 00:03:33
IP Address: 76.22.13.126

PAGE 2: General travel information

Q1: Where do you live?	Downtown Issaquah
Q2: How often do you use the Route 200?	Occasionally (less than once a week)
Q3: For what purpose to you typically use the Route 200? To get to/from ...	transfers to other bus routes
Q4: What is your most common destination? Examples include Fred Meyer, Issaquah Transit Center, Siemens, Issaquah High School, etc.	<i>Respondent skipped this question</i>
Q5: How often do you go to Swedish Medical Center Issaquah?	Never

PAGE 3: Phase I route changes happening June 8

Q6: On June 8, Route 200 will be extended to the Issaquah Highlands Park-and-Ride via SE Black Nugget Road and Highlands Drive NE to improve rider demand and route performance. This new routing means riders will have a connection between the Issaquah Transit Center, downtown and north Issaquah, and the Issaquah Highlands. To extend the route without requiring additional revenue, two portions will be affected:- The 220th Avenue SE, SE 51st Street and East Lake Sammamish Parkway SE loop north of SE 56th Street, which serves Microsoft, Siemens, Federal Express and other offices, will be discontinued.- The Fred Meyer and Home Depot loop on East Lake Sammamish Parkway SE and SE 62nd Street also will be discontinued. Riders will soon catch the Route 200 on SE Black Nugget Road north of the shopping area instead of boarding in the Fred Meyer parking lot. How will this affect your use of transit?

I will use transit less

PAGE 4: Phase II route changes proposed for 2016 - Alternatives 1 and 2

Q7: In March 2016, the Route 200 is proposed to be extended to Swedish Medical Center Issaquah in Metro's Alternative 1. How would this change affect your use of transit?

I would use transit more

Q8: In March 2016, the current route where it travels south of SE Bush Street near Issaquah High School would be eliminated to keep the proposal cost-neutral in Alternative 2. How would this change affect your use of transit?

I would use transit more

Q9: Do you prefer Alternative 1 or 2?

Alternative 1 – extend to Swedish Medical Center Issaquah with 40-minute frequency

Q10: Please share any additional feedback you have about the Route 200 changes proposed for March 2016, where service would be extended past the Issaquah Highlands Park-and-Ride to Swedish Medical Center Issaquah, and service at the far southwest end of the route near Issaquah High School would be eliminated.

Respondent skipped this question

Q11: Thank you for taking the time to complete this survey. If you share your email address as a way to stay informed, we'll subscribe you to the Metro Matters email list. Please enter your email address here.

Respondent skipped this question