



# Conservation Futures Advisory Committee

Highlights from Recommendations for 2025 Conservation Futures  
& Parks Levy County Open Space Funding

King County Council – TrEE Committee Briefing  
August 22, 2024

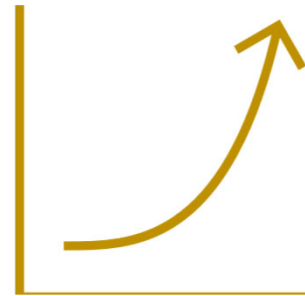
# Accelerating the pace of conservation



**Bonding**  
*started in 2020*



**Match waiver**  
*started in 2020*

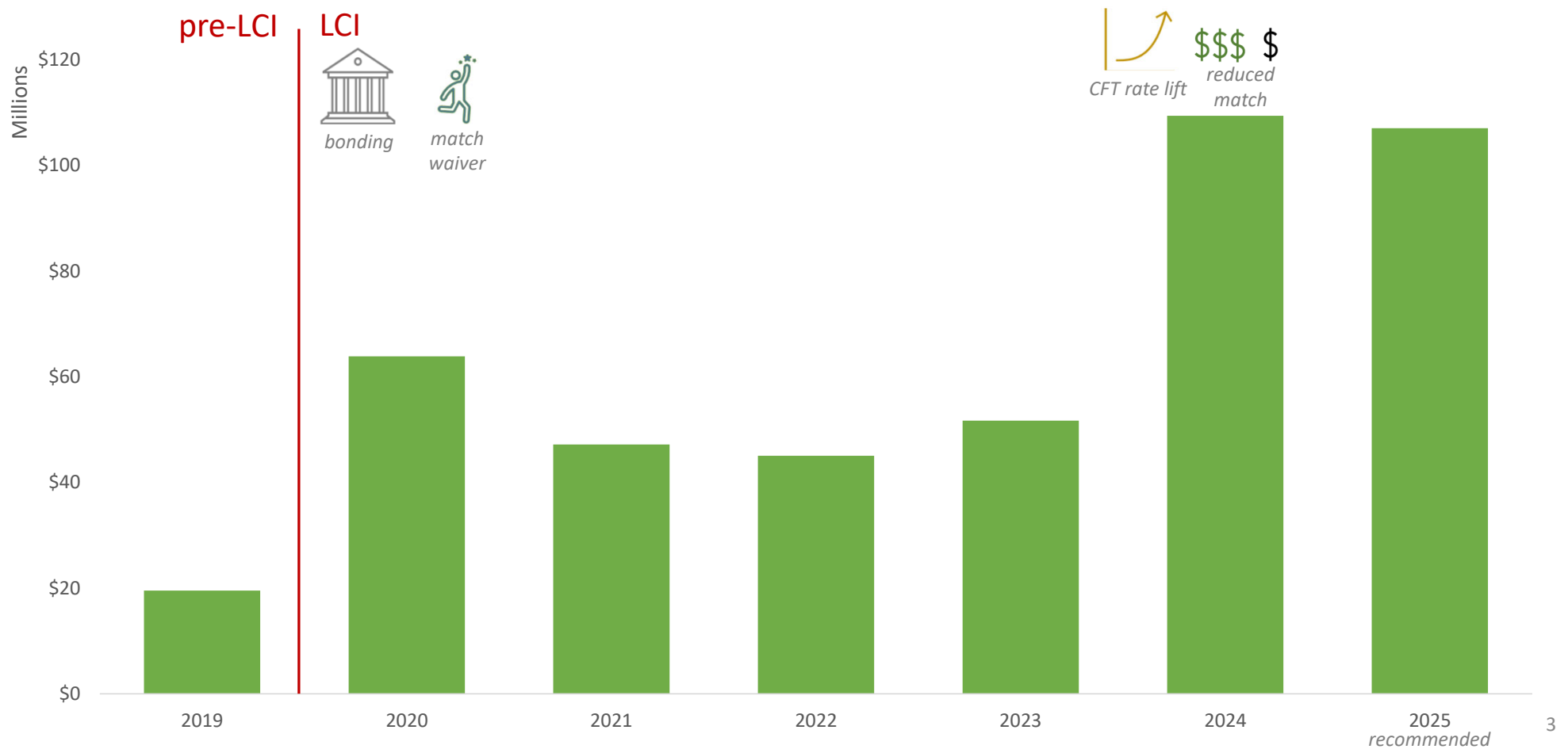


**CFT rate lift**  
*started in 2023*



**Reduced match +  
site stabilization**  
*started in 2023*

# Five-fold increase in open space funding awards



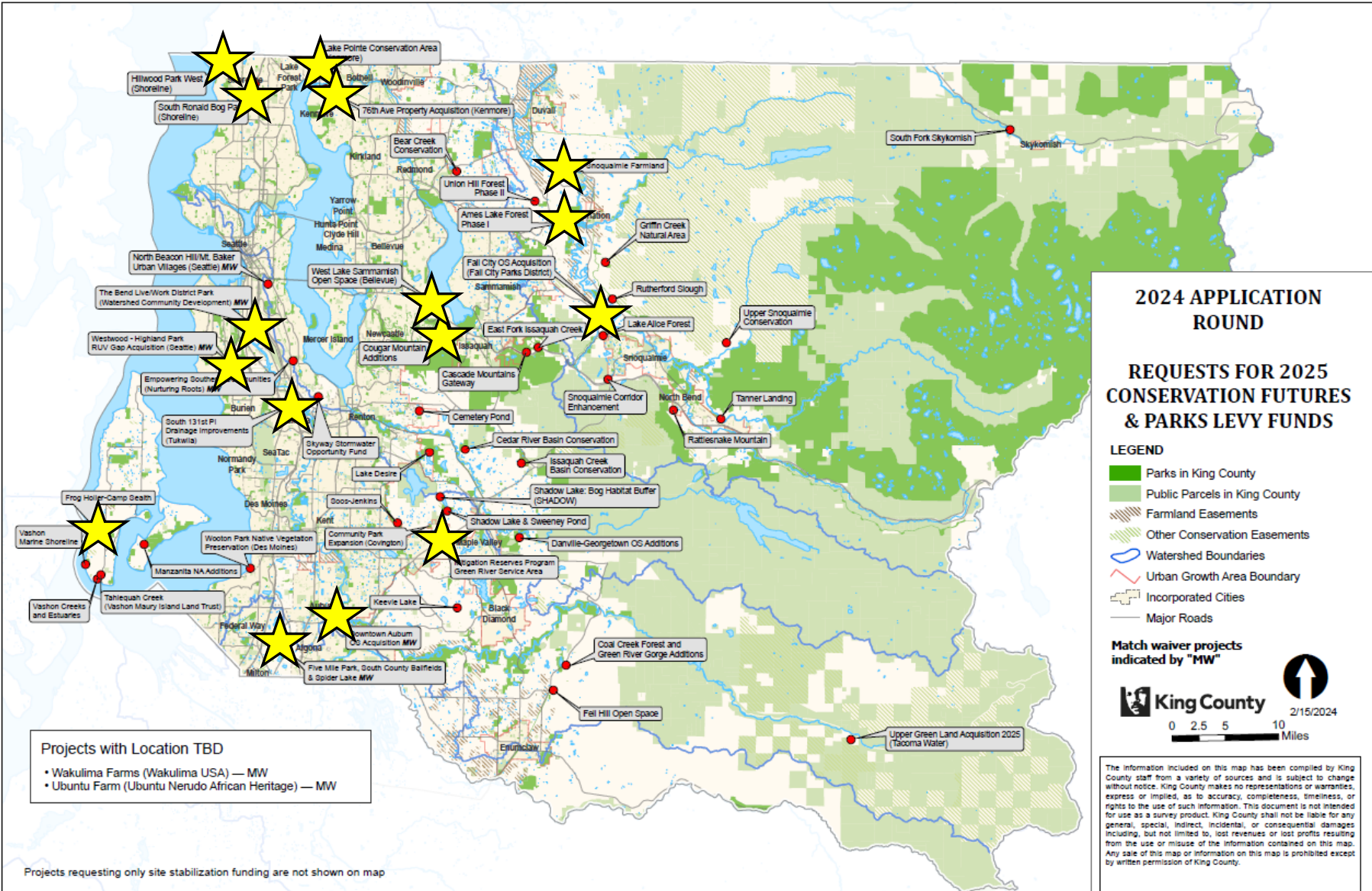
# Funding Recommendations



**\$107 million**



**Up to 3,600 acres**



## 2024 APPLICATION ROUND

### REQUESTS FOR 2025 CONSERVATION FUTURES & PARKS LEVY FUNDS

**LEGEND**

- Parks in King County
- Public Parcels in King County
- Farmland Easements
- Other Conservation Easements
- Watershed Boundaries
- Urban Growth Area Boundary
- Incorporated Cities
- Major Roads

**Match waiver projects indicated by "MW"**

2/15/2024

The information included on this map has been compiled by King County staff from a variety of sources and is subject to change without notice. King County makes no representations or warranties, express or implied, as to accuracy, completeness, timeliness, or rights to the use of such information. This document is not intended for use as a survey product. King County shall not be liable for any general, special, indirect, incidental, or consequential damages including, but not limited to, lost revenues or lost profits resulting from the use or misuse of the information contained on this map. Any sale of this map or information on this map is prohibited except by written permission of King County.

**Projects with Location TBD**

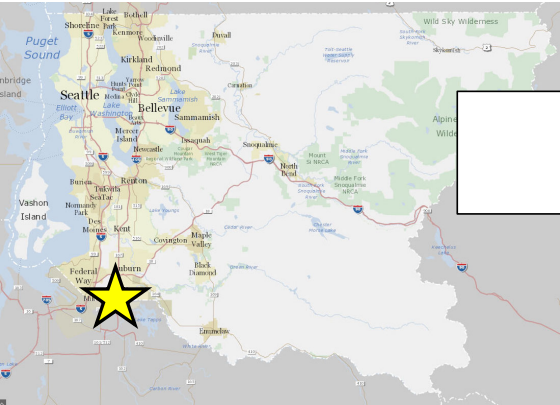
- Wakulima Farms (Wakulima USA) — MW
- Ubuntu Farm (Ubuntu Nerudo African Heritage) — MW

Projects requesting only site stabilization funding are not shown on map



# Highlights: Projects in Cities





**Auburn - Downtown Auburn Open Space Acquisition –  
\*Match Waiver Request\* | District 7**



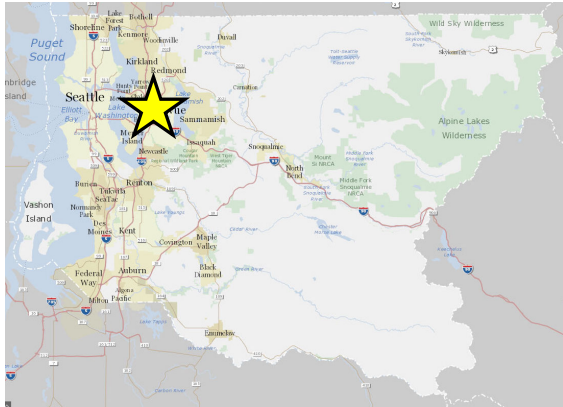
Auburn - Downtown Auburn Open Space Acquisition - **\*Match Waiver Request\*** | District 7

We recommend full funding and a match waiver.





# Bellevue - West Lake Sammamish Open Space | District 6



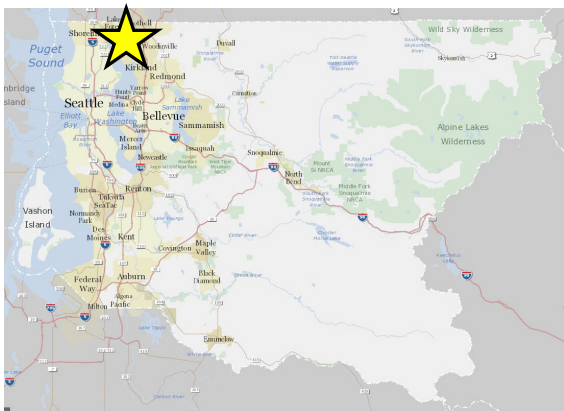
**Bellevue - West Lake Sammamish Open Space | District 6**

We recommend full funding.

*Bellevue is also getting an award for site stabilization costs on past projects.*



# Kenmore - Kenmore Lake Pointe Conservation Area Acquisition | District 1



**Kenmore - Kenmore Lake Pointe Conservation Area Acquisition | District 1**

Recommended award provides all the funding needed to complete acquisition.

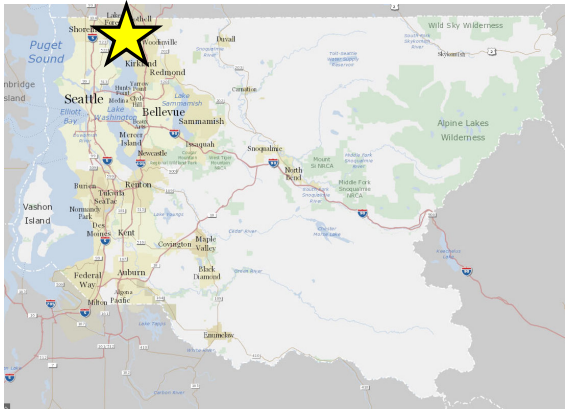
**Current**



**Future vision**



# Kenmore – 76th Ave Property Acquisition | District 1



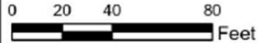
King County  
CFT Grant Program  
2025 Funds

Project Location Map

"76TH AVE Property"  
16425 76TH AVE NE  
Kenmore, WA 98028  
PIN 563150-0860

Acquisition (red outline)

Approximately:  
1.08 Acres

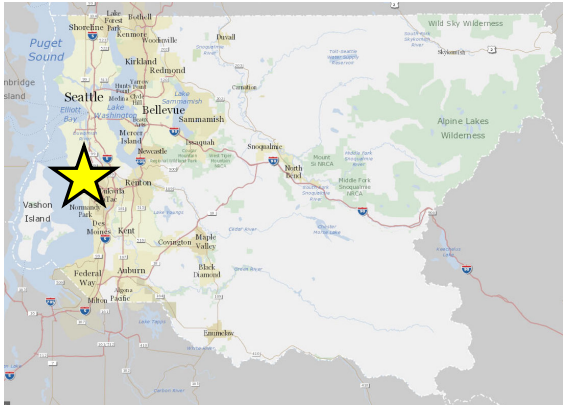


**Kenmore – 76th Ave Property Acquisition | District 1**

We recommend full funding.



Seattle – Westwood-Highland Park RUV Gap Acquisition - **\*Match Waiver Request\*** | District 8



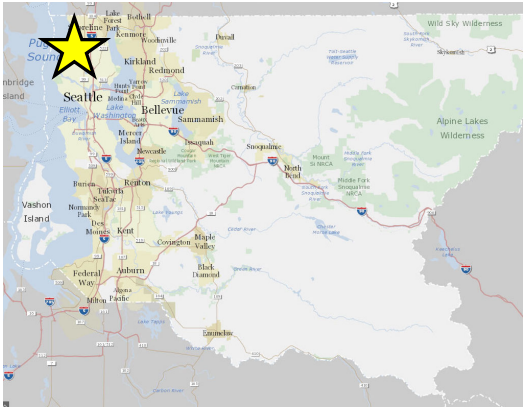
Seattle – Westwood-Highland Park RUV Gap Acquisition - **\*Match Waiver Request\*** | District 8

We recommend full funding and a match waiver.





# Shoreline - Hillwood Park West Acquisition | District 1



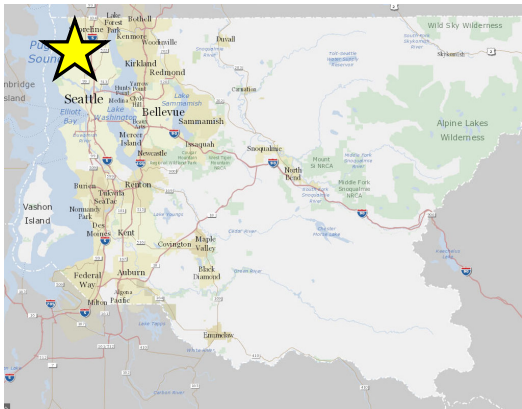
Trail start at 8th Ave NW

**Shoreline - Hillwood Park West Acquisition | District 1**

We recommend full funding.



# Shoreline - South Ronald Bog Park Acquisition | District 1



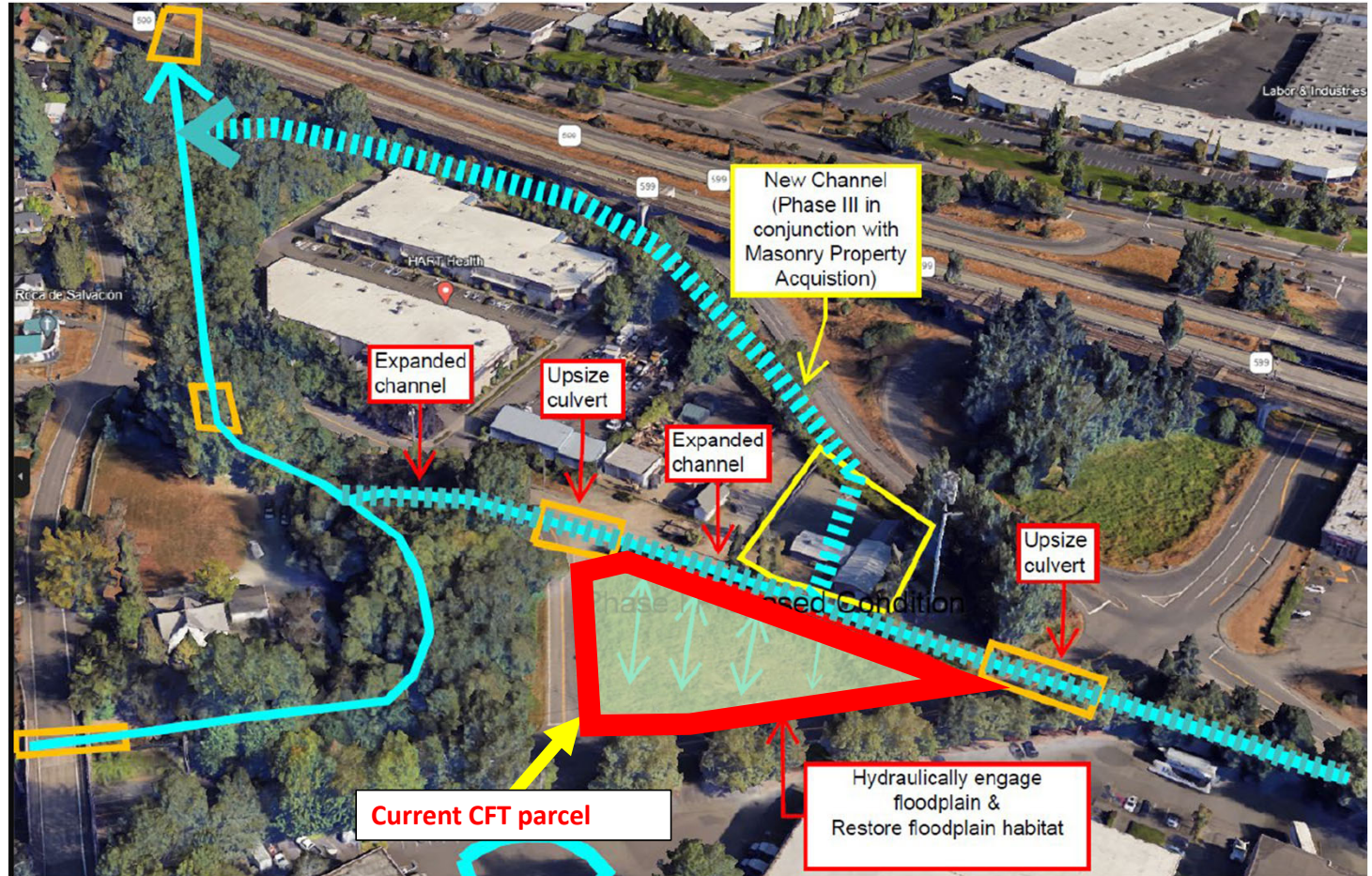
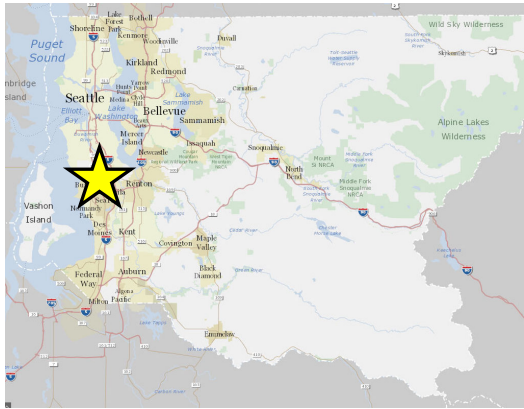
## Shoreline - South Ronald Bog Park Acquisition | District 1



We recommend full funding.

*Shoreline is also getting an award for site stabilization costs on past projects.*

# Tukwila - South 131st PI Drainage Improvements | District 8



# Tukwila - South 131st Pl Drainage Improvements | District 8

We recommend full funding.

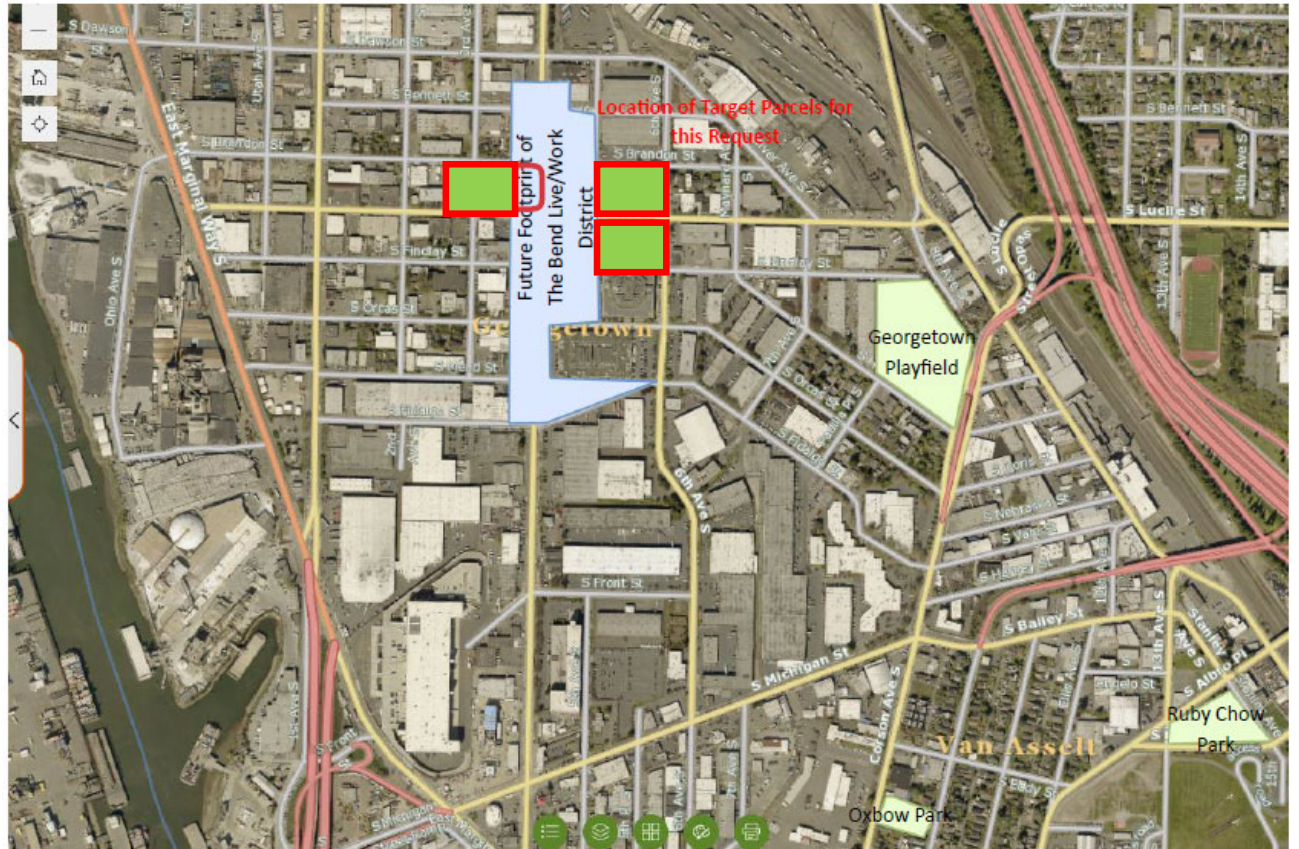
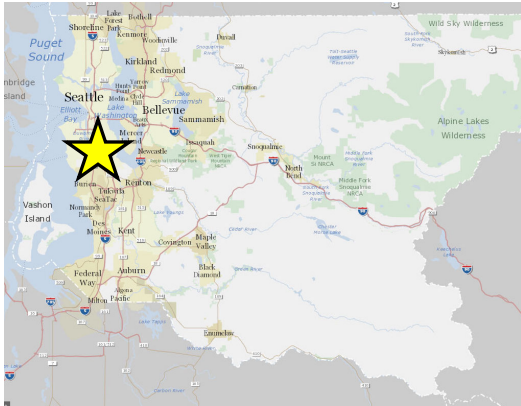
Emerging policy focus:  
Stormwater parks



**SOUTHGATE CREEK STREAM ENHANCEMENT AND STORMWATER PARK CONCEPT**  
NTS



**Watershed Community Development – The Bend Live/Work District Park - \*Match Waiver Request\* | District 8**



Watershed Community Development – The Bend Live/Work District Park - **\*Match Waiver Request\*** | District 8

We recommend full funding and a match waiver.

Emerging policy focus:  
Affordable Housing + Parks

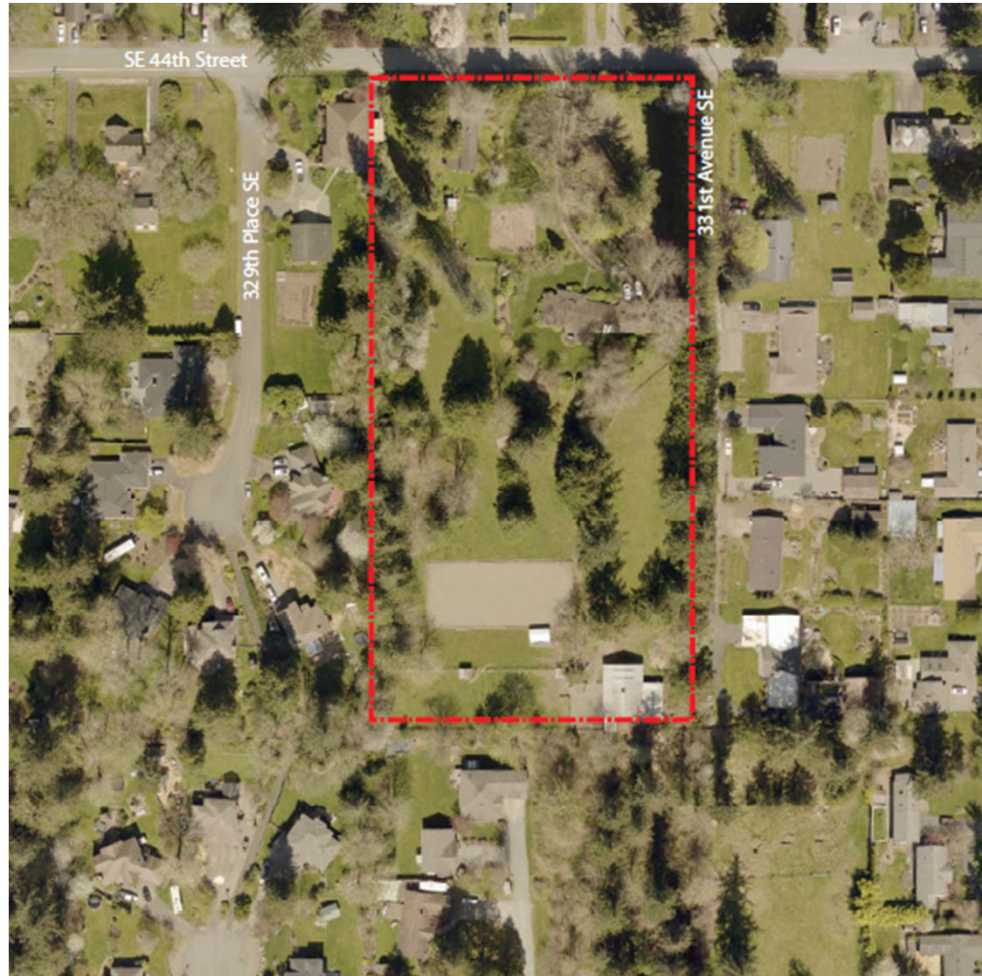
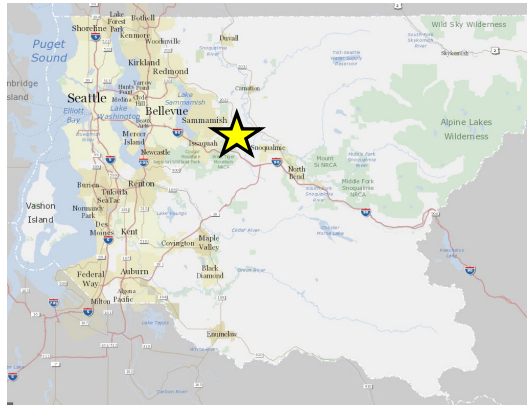






# Highlights: Projects in Unincorporated King County

# Fall City Metropolitan Park District - Fall City Open Space Property Acquisition | District 3

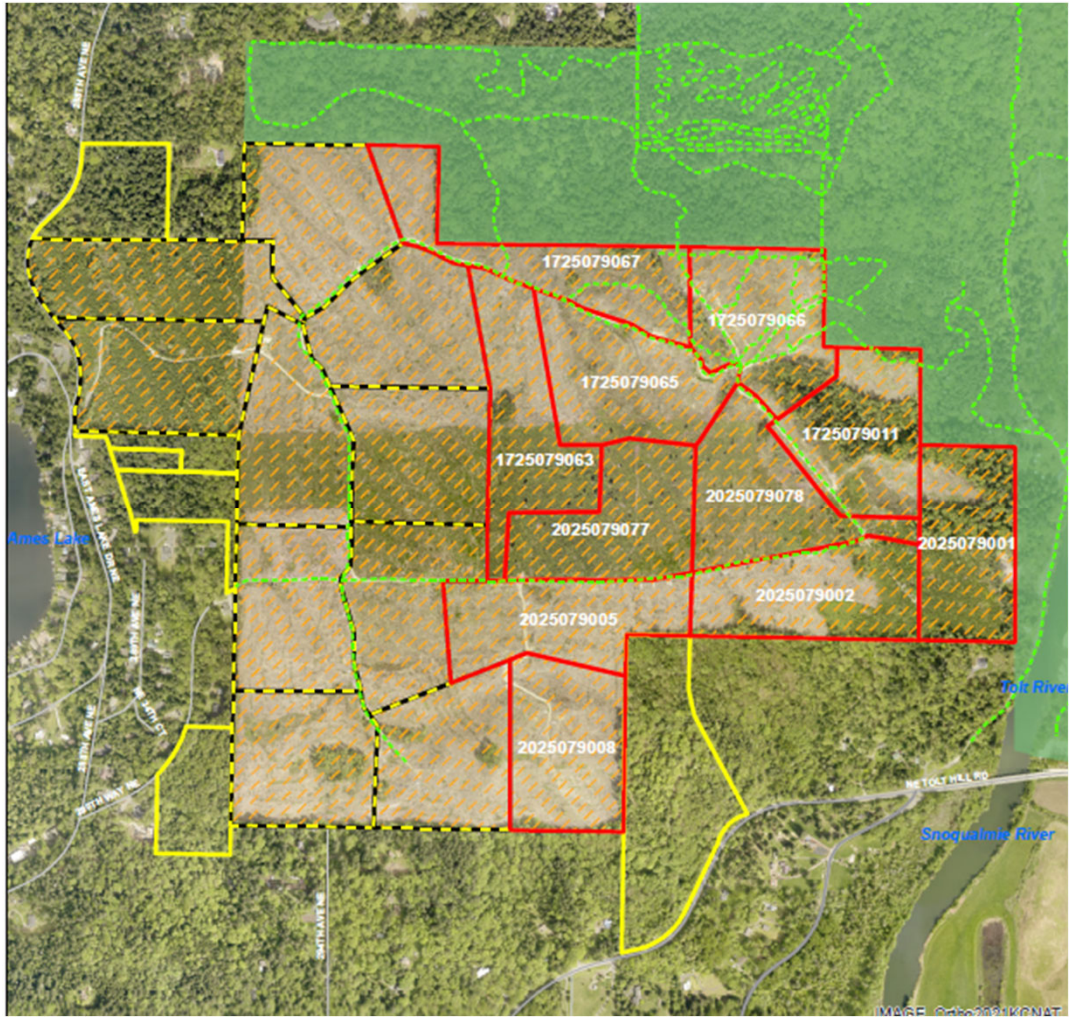
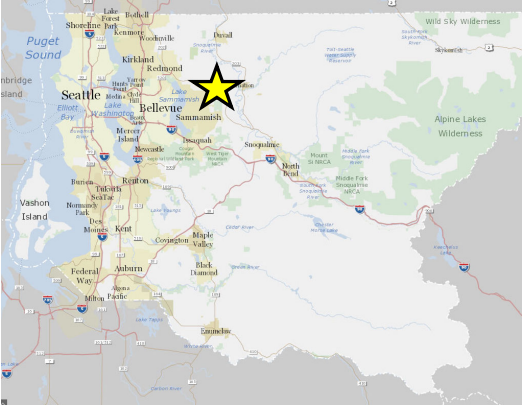


**Fall City Metropolitan Park District - Fall City Open Space Property Acquisition | District 3**

We recommend full funding.



# KC - WRIA 7 - Ames Lake Forest Phase 1 | District 3

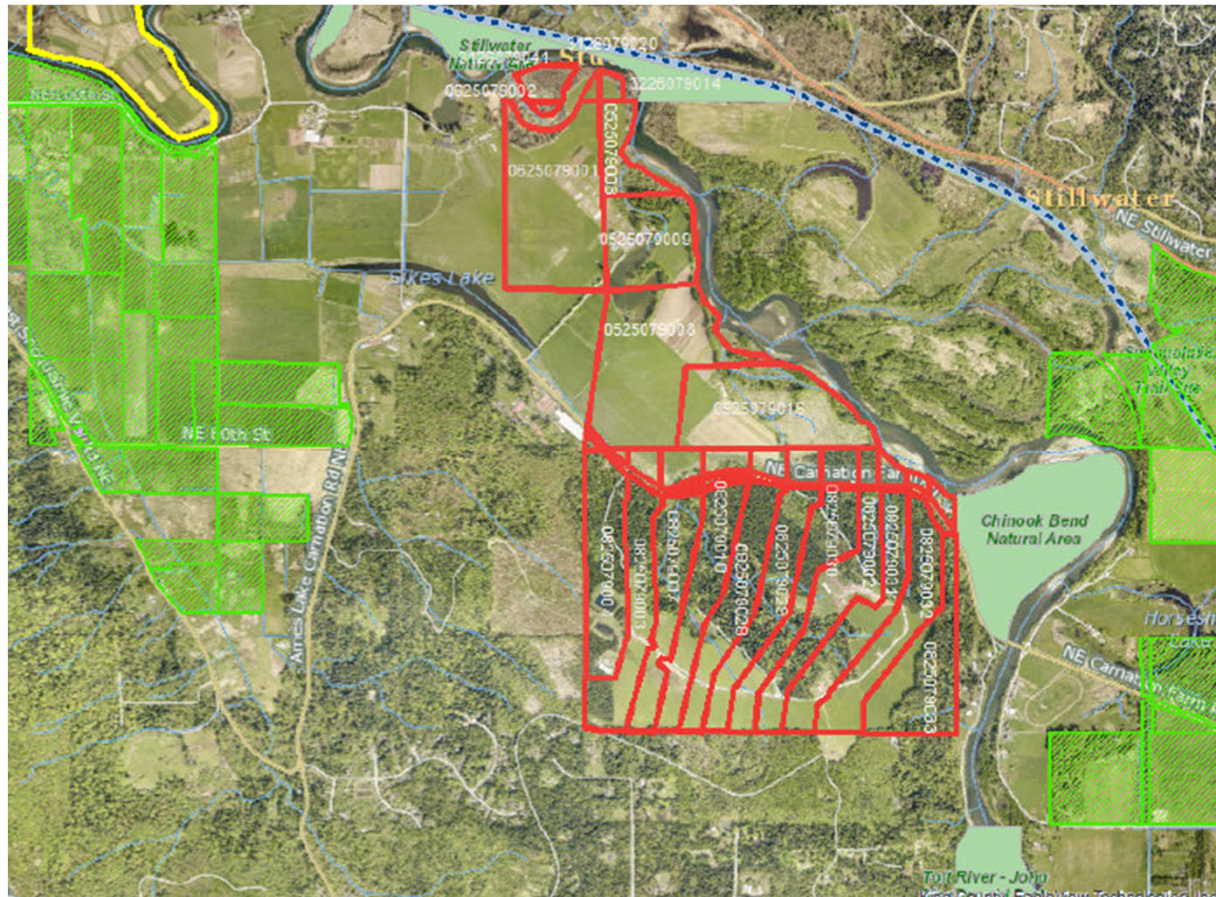
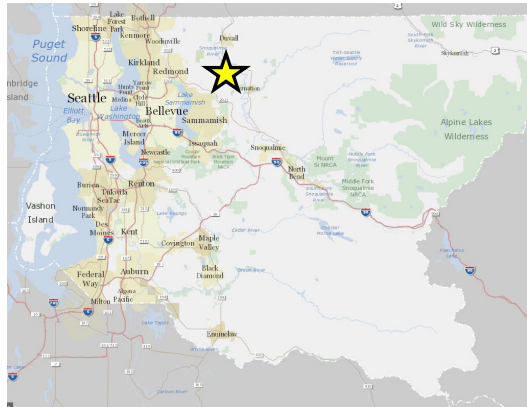




**KC - WRIA 7 - Ames Lake Forest Phase 1 | District 3**

We recommend partial funding.

# KC - WRIA 7 - Protecting Farmland - Snoqualmie and Vicinity Farms | District 3

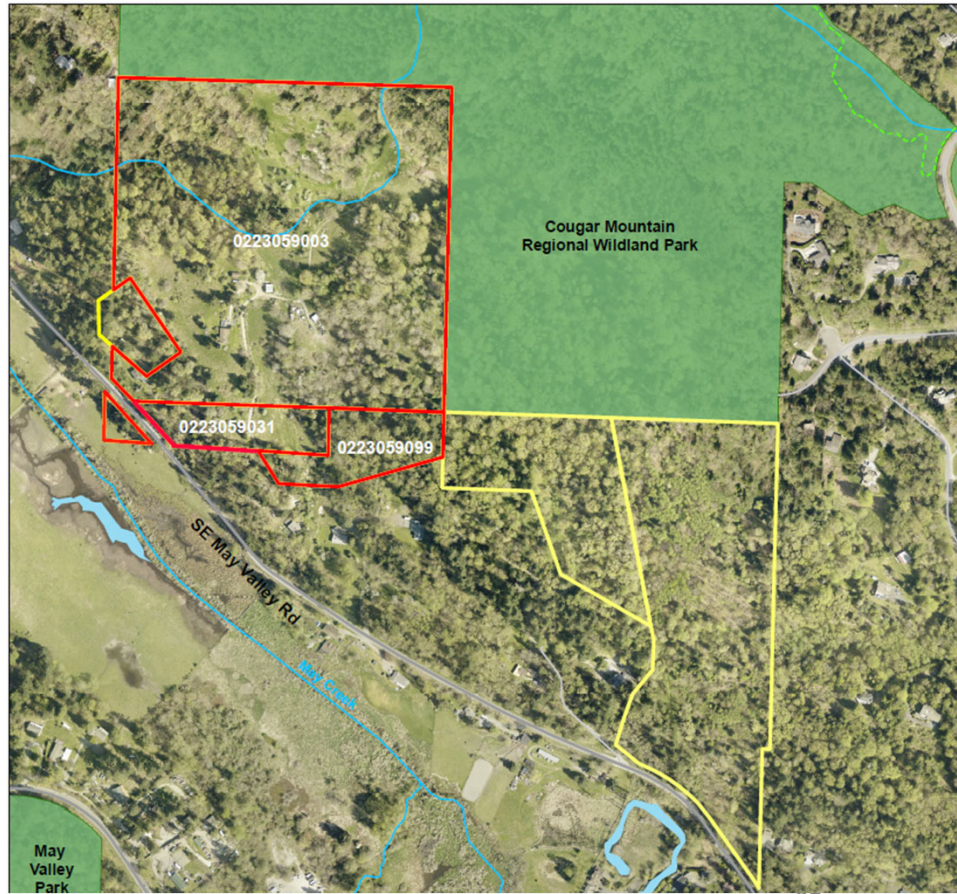
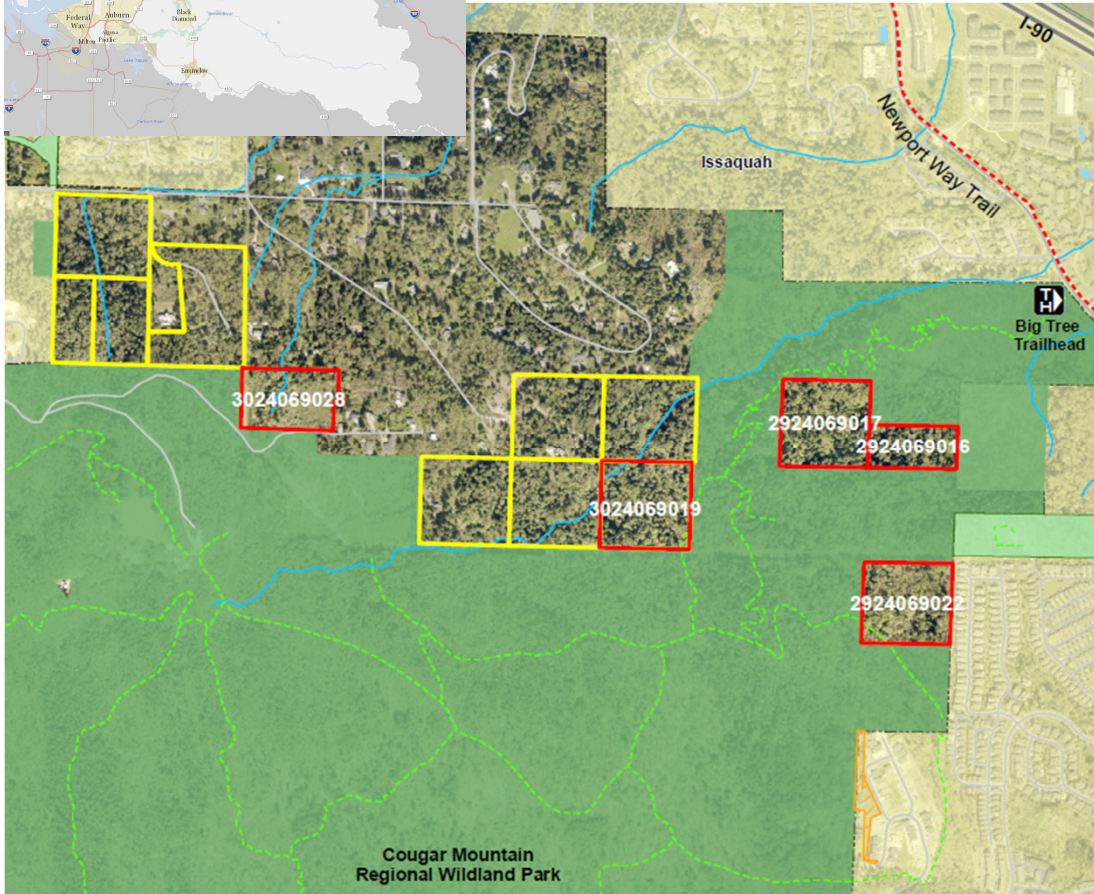
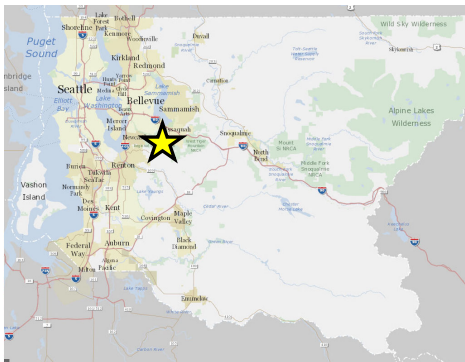


An aerial photograph showing a farmstead in a valley. The farm includes a large white-roofed building, several smaller structures, and a paved area. The surrounding landscape is a mix of green fields and a dense forest of trees with some autumn-colored foliage. In the background, a thick layer of fog or mist hangs over the forested hills. A road or path runs through the middle ground, separating the farm from the forest.

**KC - WRIA 7 - Protecting Farmland - Snoqualmie and Vicinity Farms | District 3**

We recommend full funding.

# KC - WRIA 8 - Cougar Mountain Additions | District 9



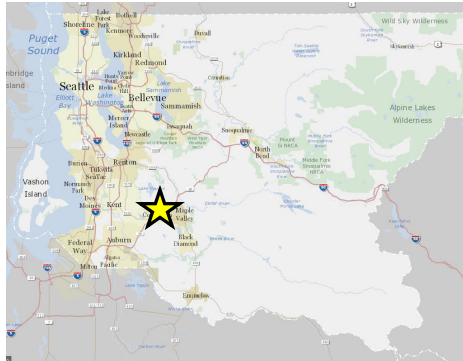


An aerial photograph of a vast forested mountain range. The foreground and middle ground are dominated by dense evergreen and deciduous trees, with some areas showing autumnal colors. In the distance, more mountain ranges are visible under a sky filled with large, grey clouds. A white text box with a black border is centered in the upper portion of the image.

**KC - WRIA 8 - Cougar Mountain Additions | District 9**

We recommend partial funding.

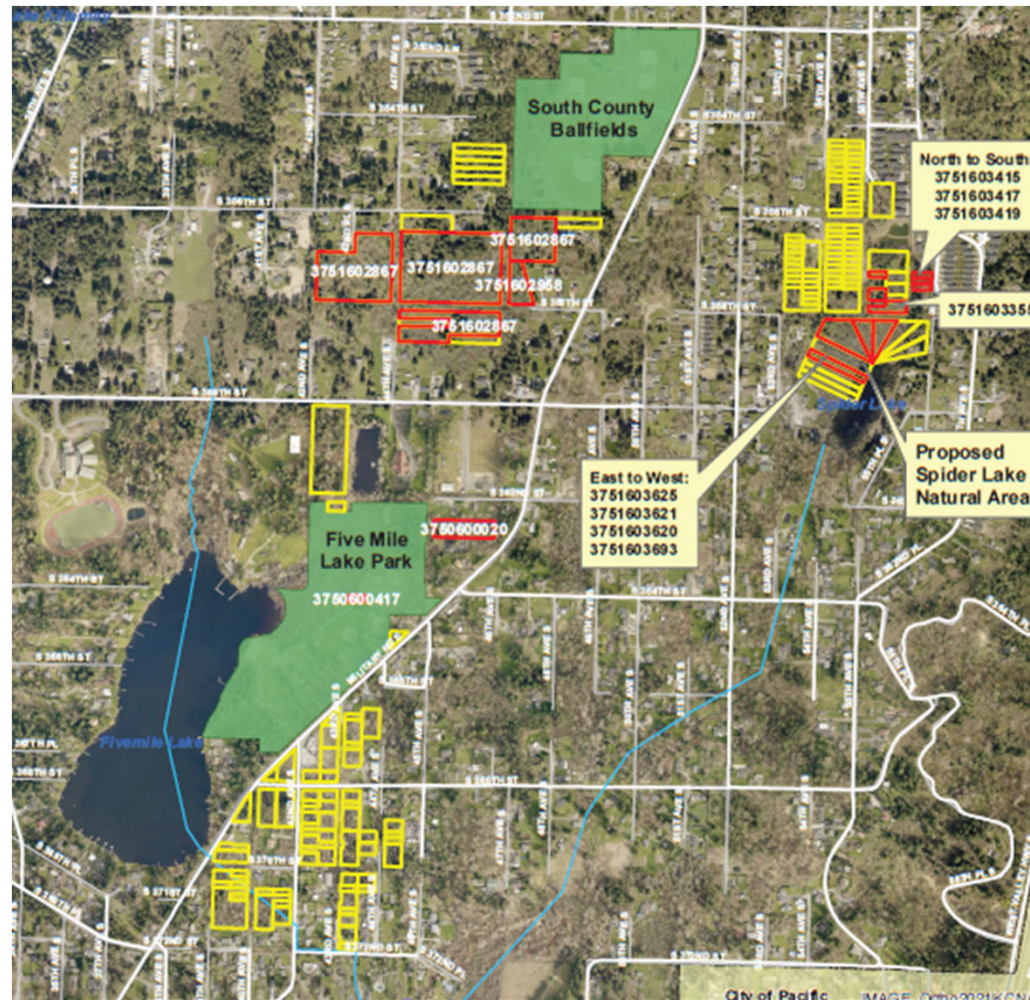
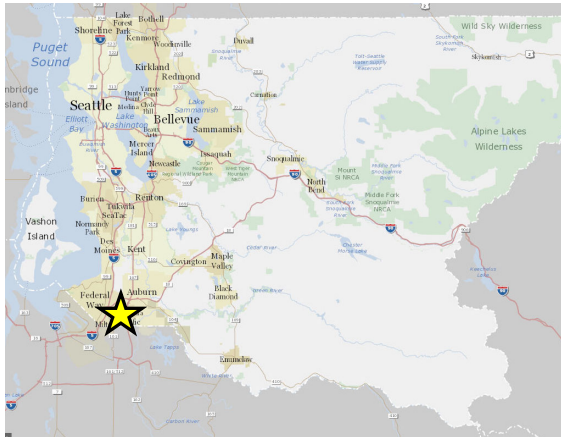
# KC - WRIA 9 - Mitigation Reserves Program-Green River Service Area | District 9



**KC - WRIA 9 - Mitigation Reserves Program-Green River Service Area | District 9**

We recommend full funding.

**KC - WRIA 10 - Five Mile Park, South County Ballfields & Spider Lake - *\*Match Waiver Request\** | District 7**

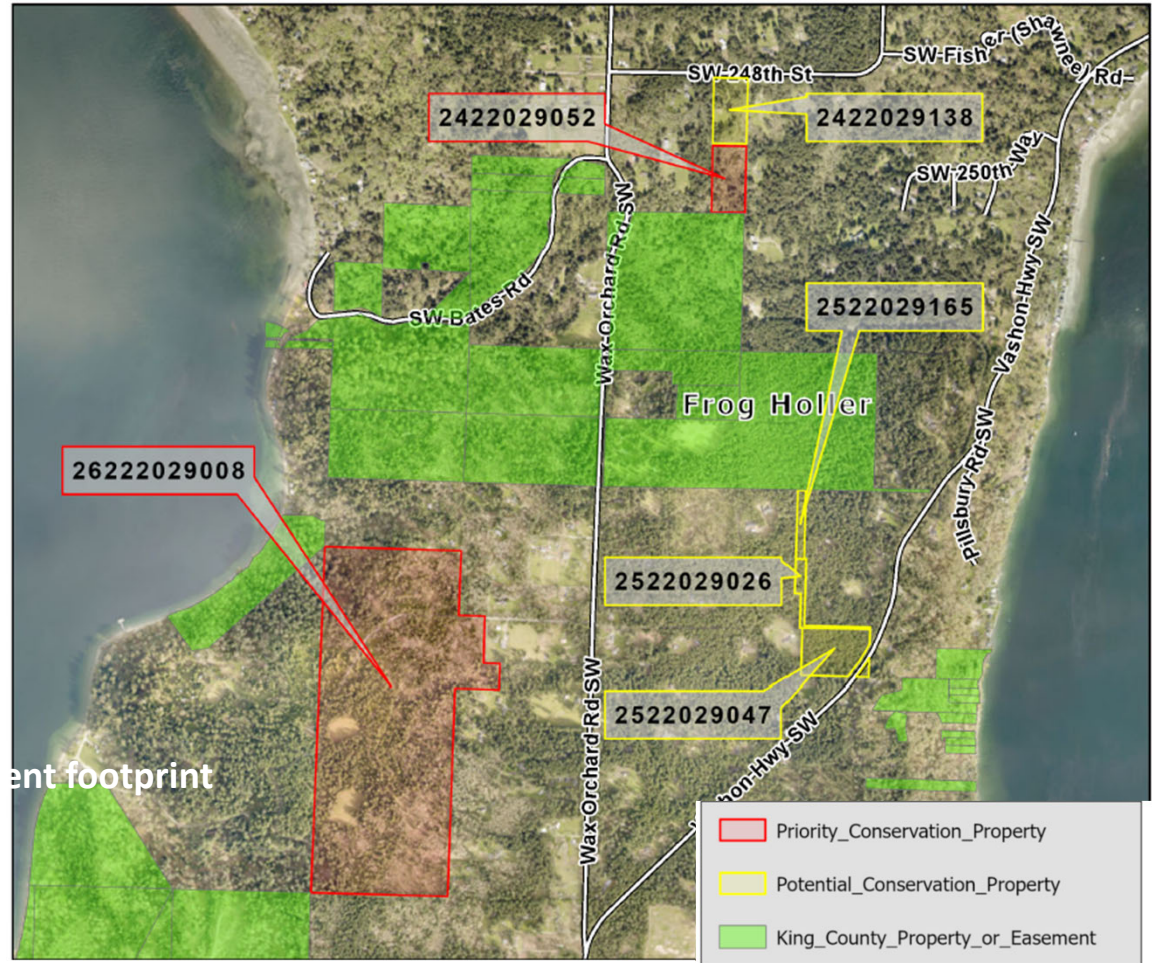
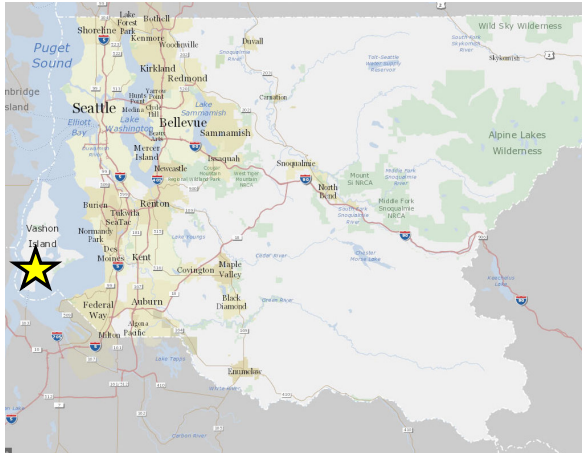





KC - WRIA 10 - Five Mile Park, South County Ballfields & Spider Lake - **\*Match Waiver Request\*** | District 7

We recommend partial funding  
without a match waiver.

# KC - Vashon – Frog Holler - Camp Sealth | District 8



- Priority\_Conservation\_Property
- Potential\_Conservation\_Property
- King\_County\_Property\_or\_Easement



**KC - Vashon – Frog Holler - Camp Sealth | District 8**

We recommend full funding.

Thank you!

---

