

# SEATTLE OPERA.

1020 JOHN ST  
SEATTLE, WA 98109  
206.389.7600  
SEATTLE.OPERA@SEATTLEOPERA.ORG

**SEATTLEOPERA.ORG**

November 12, 2015

Dear King County Council,

This is truly an exciting time for the arts and heritage organizations in King County. To have these important and significant resources available at this time is especially important for Seattle Opera which has been fully engaged in preparing to build a new building at Seattle Center on the Mercer Arena site. This will replace the existing building which has been closed since 2003 and is in a seriously deteriorating state. Our present home in the South Lake Union neighborhood is an old building that we will soon need to leave as it is no longer available to us after 2018.

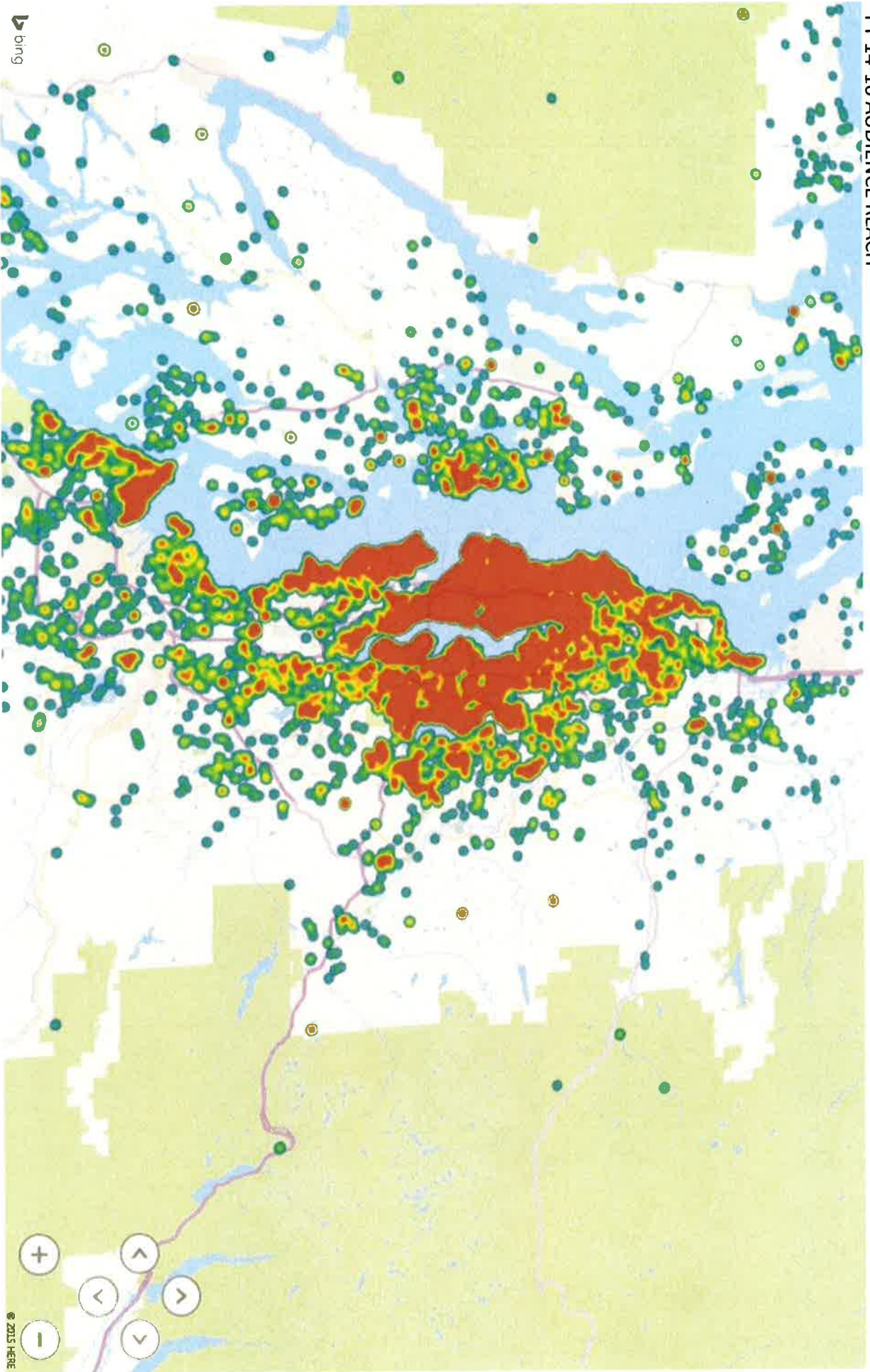
The site at the Seattle Center is perfect for our needs and will enable us to bring our many new community and educational programs to the forefront of our work. The new building will have direct access to the stage of McCaw Hall and will be the beginning of the redevelopment of the whole NE corner of the Seattle Center Campus. We are grateful to the Council and the County Executive for their vision and support of arts and heritage in King County.

Thank you,

Louise Miller,  
Vice-President Seattle Opera Board of Directors

# SEATTLE OPERA.

FY 14-16 AUDIENCE REACH



bing

© 2015 HERE

# SEATTLE OPERA.

## NUMBER OF YOUTH SERVED SINCE 2012

