

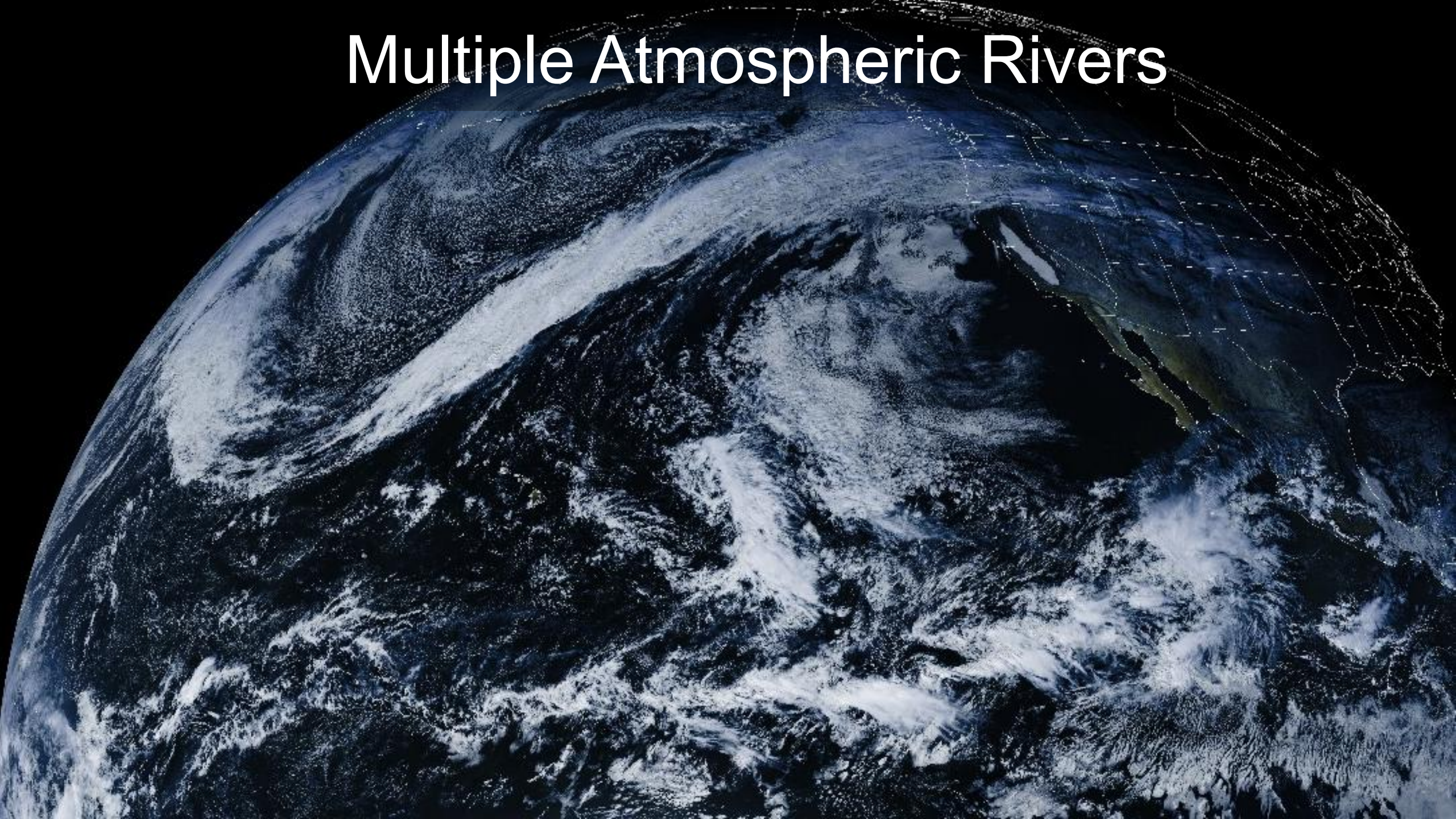


KING COUNTY
FLOOD CONTROL
DISTRICT

December 2025 Flood

February 10, 2026






Multiple Atmospheric Rivers



Background

Monitor six rivers and Issaquah Creek with five flood phases

Flood phase

Phase	Expected impact
 0	No flooding expected
 1	King County staff are on alert and preparing for a possible flood event.
 2	Minor flooding expected
 3	Moderate flooding expected
 4	Severe flooding expected

- Flood Warning Center opens at phase 2
- Flood Patrol dispatched at phase 3

Historic Flood

Phase 4: Severe flooding

- ★ • Cedar River
- Green River
- Snoqualmie River
- ★ • South Fork Skykomish River
- White River
- Issaquah Creek

Phase 3: Moderate flooding

- Tolt River

★ Record flows

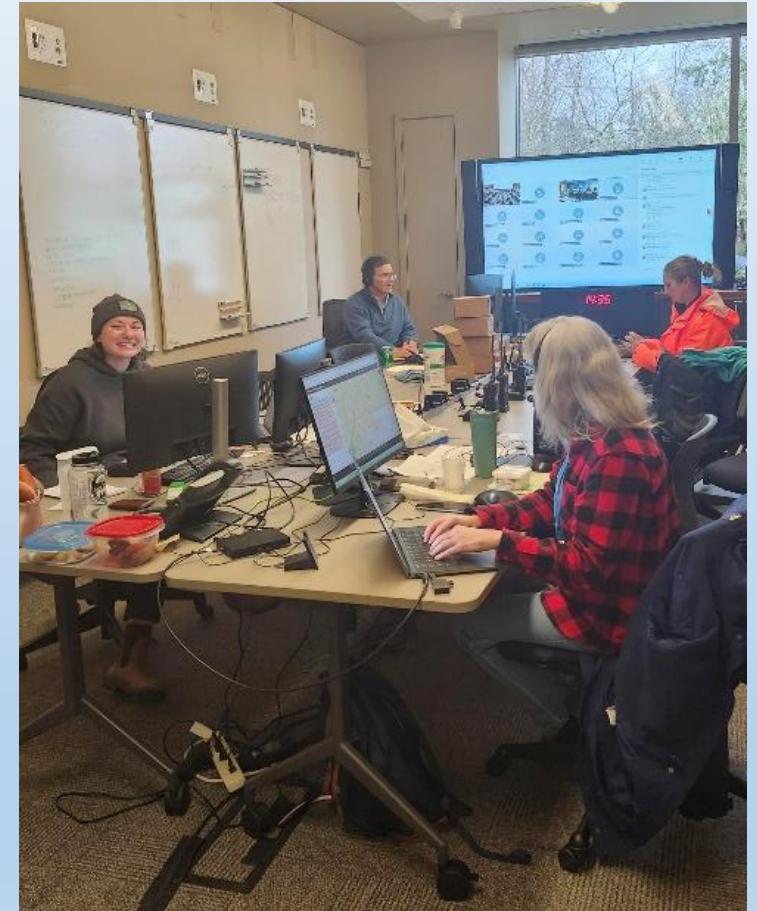


Byers Neighborhood on Cedar River, Dec. 2025

Longest Flood in Memory

Flood Warning Center

- Open Dec. 8 to Dec. 30.
- Open 24/7, 482 hours total.
- 44 County staff worked at least one shift.
- Primarily onsite at the Emergency Operations Center.



Flood Warning Center, Dec. 2025

Longest Flood in Memory

Flood Patrol

- County staff patrolled Dec. 8. to 23.
- National Guard patrolled independently Dec. 24 to 30.
- 88 County staff worked at least one patrol shift.
- 1092 miles patrolled.



Flood Patrol, Dec. 2025

Collaborative Response

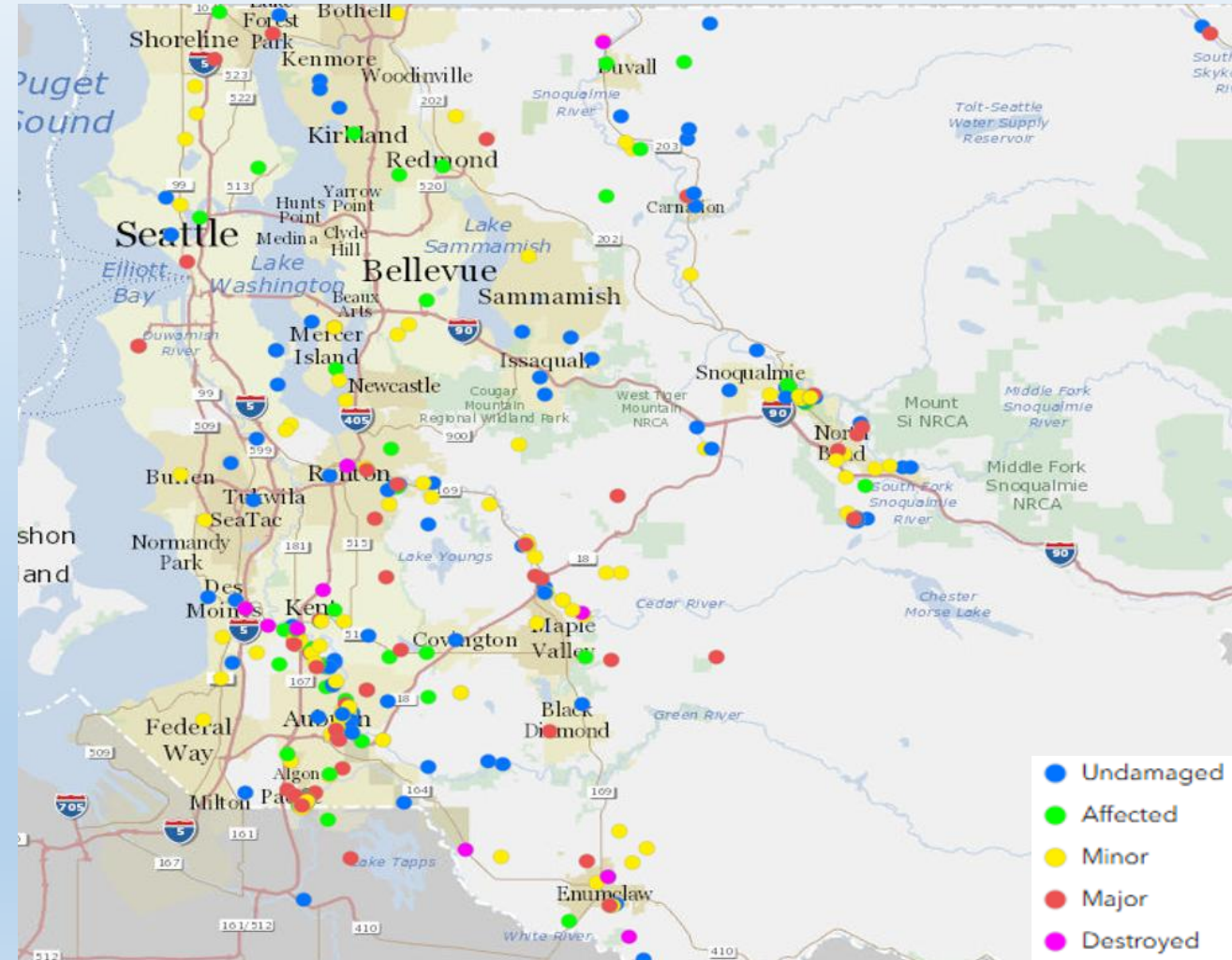
- Water and Land Resources Division
- Road Services Division
- Office of Emergency Management
- King County Sheriff's Office
- Cities, especially Kent, Tukwila and Pacific
- U.S. Army Corps of Engineers
- Washington State
- Flood Control District

Program Adjusted in the Second Week

- Trained 42 people for the Flood Warning Center.
- Trained more than 50 National Guard members for Flood Patrol.
- Created a 24/7 Rapid Engineering Assessment Team.
- Created a GIS map of where materials were staged across the county.
- Rapid Response Packages staged in Federal Way in coordination with State.
- Conducted 16 repairs during and in the weeks following the flood.

Damage Countywide

- No lives lost.
- Residential
 - 398 submitted reports of damage.
 - 14 structures destroyed.
 - 73 experienced major damage.
- Business
 - 62 submitted reports of damage.
 - \$10.5M estimated inventory/equipment loss.
 - \$3.8M estimated structure loss.



Damaged residential structures

Extensive Damage to River Facilities

- 16 emergency repairs during and immediately following December flood.
- Post-flood inspections completed mid-January.
- About 25% of 509 river facilities damaged.

16 Emergency Repairs

- 7 sites on the Green River
- 5 sites on the White River
- 3 sites on the Cedar River
- 1 site on the S. Fork Skykomish River

Examples of Emergency Repairs

Sinkhole Repair

Green River – Tukwila 205 Levee



Emergency Revetment Reconstruction Cedar River – Tabor Crowall



Levee Breach

Green River – Desimone Levee



Seepage Blanket Installation Green and White Rivers



Somes Dolan Levee, Dec. 16, 2025



Oravetz School Revetment, Dec. 31, 2025

HESCO Repair and Installation White River



A Street Trailer Court



Pacific Park



4th Avenue

HESCO Repair and Installation

White River at Pacific



Next Steps

- Assessment of inspection results underway.
- Will work with the FCD to prioritize repairs and capital work starting in March.
- Pursue Federal dollars through FEMA and US Army Corps of Engineers.
- Influx of home buyout requests.
 - As of Jan. 30, WLRD had received 21 home buyout requests and anticipate more to come.

Good News
Recent Projects Performed Well

Jan Road Levee Setback



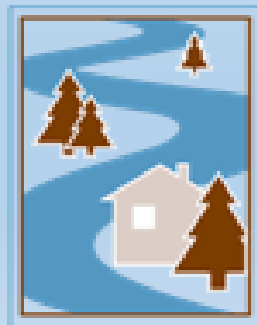
Lower Russell Levee Setback



Countyline to A Street Levee Setback



Questions?



KING COUNTY
FLOOD CONTROL
DISTRICT