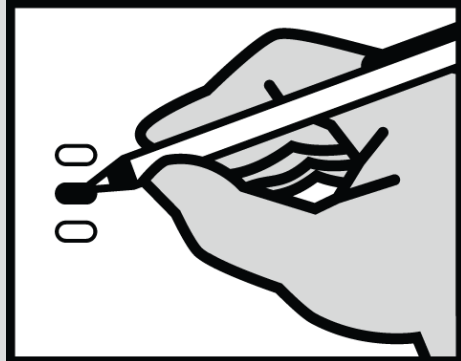


August 7, 2018
 Official Primary and Special Election Ballot
 King County, Washington

SEA 43-2047
 2047.047
 Legislative District No. 43

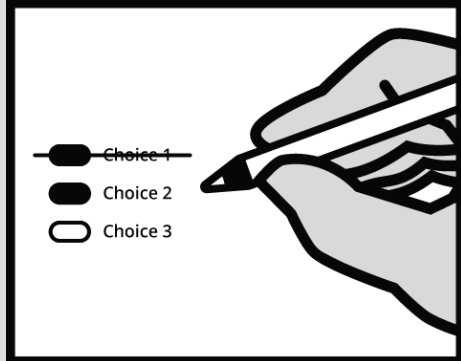
Instructions

How to vote



Completely fill in the oval next to your choice.

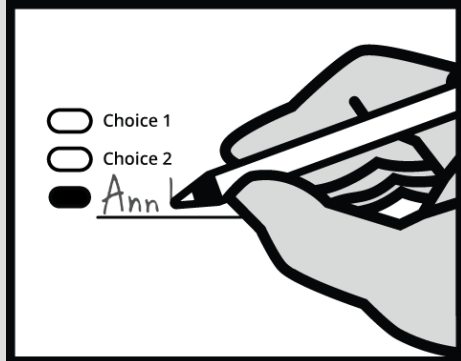
How to correct a mistake



To make a correction, draw a line through the entire choice.

You then have the option of making a different choice by completely filling in another oval.

Optional write-in



To add a new candidate, fill in the oval next to the write-in line and print the name on the write-in line.

Begin voting here



READ: Each candidate for partisan office may state a political party that he or she prefers. A candidate's preference does not imply that the candidate is nominated or endorsed by the party, or that the party approves of or associates with that candidate.

County

**King County
 Proposition No. 1
 Regular Property Tax Levy Automated
 Fingerprint Identification System
 Services**

The King County council has passed Ordinance 18674 concerning this proposition for the automated fingerprint identification system (AFIS) levy. This proposition would replace an expiring levy and fund continued operation of the regional AFIS Program to provide enhanced and accessible forensic fingerprint, palmprint and other technology and services to identify criminals and aid in the administration of justice. It would authorize an additional property tax for six years beginning with a 2018 rate of \$0.035 (3.5 cents) per \$1,000 of assessed valuation for collection in 2019. The 2019 levy amount would be the base for computing limitations under Chapter 84.55 RCW for collection in years 2020 through 2024. Should this proposition be:

- Approved
- Rejected

Federal

United States Senator
 partisan office
 vote for one

- Thor Amundson**
(Prefers Independent Party)
- Dave Strider**
(Prefers Independent Party)
- Joey Gibson**
(Prefers Republican Party)
- Mike Luke**
(Prefers Libertarian Party)
- GoodSpaceGuy**
(Prefers Republican Party)
- Clint R. Tannehill**
(Prefers Democratic Party)
- Maria Cantwell**
(Prefers Democratic Party)
- Susan Hutchison**
(Prefers Republican Party)
- Brad Chase**
(Prefers FDFR Party)
- Tim Owen**
(Prefers Republican Party)
- Matthew D. Heines**
(Prefers Republican Party)
- Sam Wright**
(Prefers The Human Rights Party)
- Art Coday**
(Prefers Republican Party)
- John Orlinski**
(Prefers Republican Party)
- Charlie R. Jackson**
(Prefers Independent Party)
- Keith Swank**
(Prefers Republican Party)
- Alex Tsimerman**
(Prefers StandupAmerica Party)
- RC Smith**
(Prefers Republican Party)
- Don L. Rivers**
(Prefers Democratic Party)
- Jennifer Gigi Ferguson**
(Prefers Independent Party)
- Steve Hoffman**
(Prefers Freedom Socialist Party)
- George H. Kalberer**
(Prefers Democratic Party)
- James Robert "Jimmie" Deal**
(Prefers Green Party)
- Roque "Rocky" De La Fuente**
(Prefers Republican Party)
- Jon Butler**
(Prefers Independent Party)
- Dave Bryant**
(Prefers Republican Party)
- Mohammad Said**
(Prefers Democratic Party)
- Matt Hawkins**
(Prefers Republican Party)
- Glen R. Stockwell**
(Prefers Republican Party)
- _____

**Continue voting
 other side**



Federal

**United States Representative
Congressional District No. 7**

partisan office
vote for one

- Craig Keller**
(Prefers Republican Party)
- Pramila Jayapal**
(Prefers Democratic Party)
- _____

State

**Legislative District No. 43
State Senator**

partisan office
vote for one

- Jamie Pedersen**
(Prefers Democratic Party)
- Dan Harder**
(Prefers Republican Party)
- _____

**Legislative District No. 43
Representative Position No. 1**

partisan office
vote for one

- Nicole Macri**
(Prefers Democratic Party)
- John Peeples**
(Prefers Republican Party)
- _____

**Legislative District No. 43
Representative Position No. 2**

partisan office
vote for one

- Boris Joffe**
(Prefers Independent Party)
- Frank Chopp**
(Prefers Democratic Party)
- Claire Torstenbo**
(Prefers Republican Party)
- _____

For this office only: In order to vote for precinct committee officer, a partisan office, you must affirm that you are a Democrat or a Republican and may vote only for one candidate from the party you select. Your vote for a candidate affirms your affiliation with the same party as the candidate. This preference is private and will not be matched to your name or shared.

Precinct Committee Officer

Democratic Party Candidates

vote for one

- James Little**
I affirm I am a Democrat.
- David Booth**
I affirm I am a Democrat.

End of Ballot

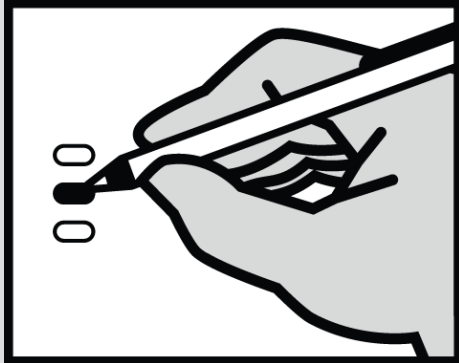
Vote both sides of ballot

August 7, 2018
 Official Primary and Special Election Ballot
 King County, Washington

VASHON
 1187.262
 Legislative District No. 34

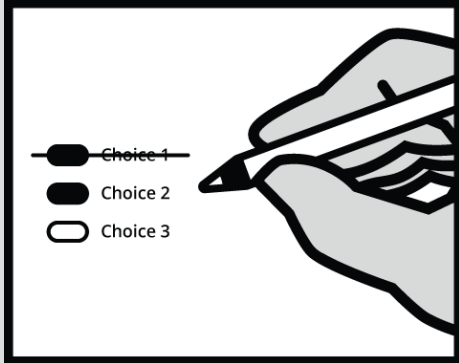
Instructions

How to vote



Completely fill in the oval next to your choice.

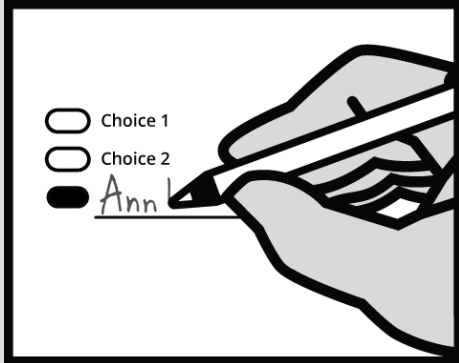
How to correct a mistake



To make a correction, draw a line through the entire choice.

You then have the option of making a different choice by completely filling in another oval.

Optional write-in



To add a new candidate, fill in the oval next to the write-in line and print the name on the write-in line.

Begin voting here



READ: Each candidate for partisan office may state a political party that he or she prefers. A candidate's preference does not imply that the candidate is nominated or endorsed by the party, or that the party approves of or associates with that candidate.

County

**King County
 Proposition No. 1
 Regular Property Tax Levy Automated
 Fingerprint Identification System
 Services**

The King County council has passed Ordinance 18674 concerning this proposition for the automated fingerprint identification system (AFIS) levy. This proposition would replace an expiring levy and fund continued operation of the regional AFIS Program to provide enhanced and accessible forensic fingerprint, palmprint and other technology and services to identify criminals and aid in the administration of justice. It would authorize an additional property tax for six years beginning with a 2018 rate of \$0.035 (3.5 cents) per \$1,000 of assessed valuation for collection in 2019. The 2019 levy amount would be the base for computing limitations under Chapter 84.55 RCW for collection in years 2020 through 2024. Should this proposition be:

- Approved**
- Rejected**

Federal

United States Senator
 partisan office
 vote for one

- Thor Amundson**
(Prefers Independent Party)
- Dave Strider**
(Prefers Independent Party)
- Joey Gibson**
(Prefers Republican Party)
- Mike Luke**
(Prefers Libertarian Party)
- GoodSpaceGuy**
(Prefers Republican Party)
- Clint R. Tannehill**
(Prefers Democratic Party)
- Maria Cantwell**
(Prefers Democratic Party)
- Susan Hutchison**
(Prefers Republican Party)
- Brad Chase**
(Prefers FDFR Party)
- Tim Owen**
(Prefers Republican Party)
- Matthew D. Heines**
(Prefers Republican Party)
- Sam Wright**
(Prefers The Human Rights Party)
- Art Coday**
(Prefers Republican Party)
- John Orlinski**
(Prefers Republican Party)
- Charlie R. Jackson**
(Prefers Independent Party)
- Keith Swank**
(Prefers Republican Party)
- Alex Tsimerman**
(Prefers StandupAmerica Party)
- RC Smith**
(Prefers Republican Party)
- Don L. Rivers**
(Prefers Democratic Party)
- Jennifer Gigi Ferguson**
(Prefers Independent Party)
- Steve Hoffman**
(Prefers Freedom Socialist Party)
- George H. Kalberer**
(Prefers Democratic Party)
- James Robert "Jimmie" Deal**
(Prefers Green Party)
- Roque "Rocky" De La Fuente**
(Prefers Republican Party)
- Jon Butler**
(Prefers Independent Party)
- Dave Bryant**
(Prefers Republican Party)
- Mohammad Said**
(Prefers Democratic Party)
- Matt Hawkins**
(Prefers Republican Party)
- Glen R. Stockwell**
(Prefers Republican Party)
- _____

**Continue voting
 other side**



Federal

**United States Representative
Congressional District No. 7**

partisan office
vote for one

- Craig Keller**
(Prefers Republican Party)
- Pramila Jayapal**
(Prefers Democratic Party)
- _____

State

**Legislative District No. 34
State Senator**

partisan office
vote for one

- Joe Nguyen**
(Prefers Democratic Party)
- Lois Schipper**
(Prefers Democratic Party)
- Sofia Aragon**
(Prefers Democratic Party)
- Courtney Lyle**
(Prefers Republican Party)
- Hillary Shaw**
(States No Party Preference)
- Annabel Quintero**
(Prefers Democratic Party)
- Lemuel W. Charleston**
(Prefers Democrat Party)
- Shannon Braddock**
(Prefers Democratic Party)
- Darla Green**
(Prefers Republican Party)
- Debi Wagner**
(Prefers Independent Party)
- Lisa Ryan Devereau**
(Prefers Democratic Party)
- _____

**Legislative District No. 34
Representative Position No. 1**

partisan office
vote for one

- Eileen L. Cody**
(Prefers Democratic Party)
- _____

**Legislative District No. 34
Representative Position No. 2**

partisan office
vote for one

- Joe Fitzgibbon**
(Prefers Democratic Party)
- _____

End of Ballot

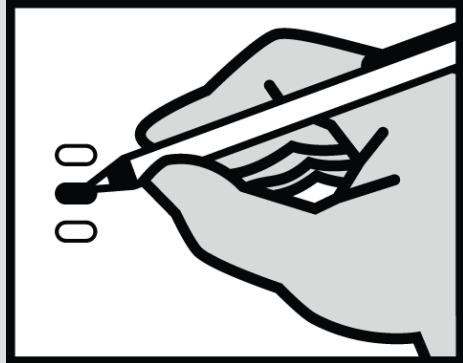
Vote both sides of ballot

August 7, 2018
 Official Primary and Special Election Ballot
 King County, Washington

SEA 43-2047
 2047.047
 Legislative District No. 43

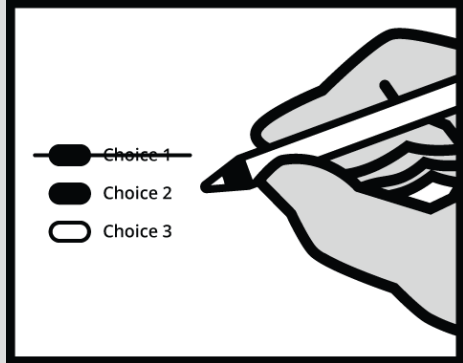
Instructions

How to vote



Completely fill in the oval next to your choice.

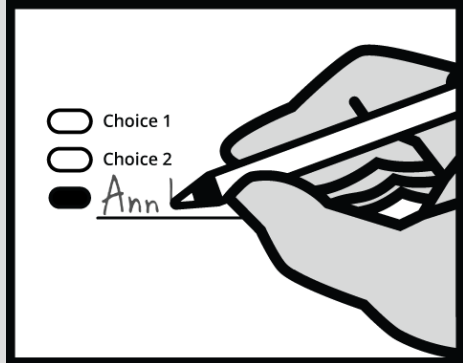
How to correct a mistake



To make a correction, draw a line through the entire choice.

You then have the option of making a different choice by completely filling in another oval.

Optional write-in



To add a new candidate, fill in the oval next to the write-in line and print the name on the write-in line.

Begin voting here



County

**King County
 Proposition No. 1
 Regular Property Tax Levy Automated
 Fingerprint Identification System
 Services**

The King County council has passed Ordinance 18674 concerning this proposition for the automated fingerprint identification system (AFIS) levy. This proposition would replace an expiring levy and fund continued operation of the regional AFIS Program to provide enhanced and accessible forensic fingerprint, palmprint and other technology and services to identify criminals and aid in the administration of justice. It would authorize an additional property tax for six years beginning with a 2018 rate of \$0.035 (3.5 cents) per \$1,000 of assessed valuation for collection in 2019. The 2019 levy amount would be the base for computing limitations under Chapter 84.55 RCW for collection in years 2020 through 2024. Should this proposition be:

- Approved**
- Rejected**

READ: Each candidate for partisan office may state a political party that he or she prefers. A candidate's preference does not imply that the candidate is nominated or endorsed by the party, or that the party approves of or associates with that candidate.

Federal

United States Senator
 partisan office
 vote for one

- Thor Amundson**
(Prefers Independent Party)
- Dave Strider**
(Prefers Independent Party)
- Joey Gibson**
(Prefers Republican Party)
- Mike Luke**
(Prefers Libertarian Party)
- GoodSpaceGuy**
(Prefers Republican Party)
- Clint R. Tannehill**
(Prefers Democratic Party)
- Maria Cantwell**
(Prefers Democratic Party)
- Susan Hutchison**
(Prefers Republican Party)
- Brad Chase**
(Prefers FDFR Party)
- Tim Owen**
(Prefers Republican Party)
- Matthew D. Heines**
(Prefers Republican Party)
- Sam Wright**
(Prefers The Human Rights Party)
- Art Coday**
(Prefers Republican Party)
- John Orlinski**
(Prefers Republican Party)
- Charlie R. Jackson**
(Prefers Independent Party)
- Keith Swank**
(Prefers Republican Party)
- Alex Tsimerman**
(Prefers StandupAmerica Party)
- RC Smith**
(Prefers Republican Party)
- Don L. Rivers**
(Prefers Democratic Party)
- Jennifer Gigi Ferguson**
(Prefers Independent Party)
- Steve Hoffman**
(Prefers Freedom Socialist Party)
- George H. Kalberer**
(Prefers Democratic Party)
- James Robert "Jimmie" Deal**
(Prefers Green Party)
- Roque "Rocky" De La Fuente**
(Prefers Republican Party)
- Jon Butler**
(Prefers Independent Party)
- Dave Bryant**
(Prefers Republican Party)
- Mohammad Said**
(Prefers Democratic Party)
- Matt Hawkins**
(Prefers Republican Party)
- Glen R. Stockwell**
(Prefers Republican Party)
- _____

**Continue voting
 other side**



Federal

**United States Representative
Congressional District No. 7**

partisan office
vote for one

- Craig Keller**
(Prefers Republican Party)
- Pramila Jayapal**
(Prefers Democratic Party)
- _____

State

**Legislative District No. 43
State Senator**

partisan office
vote for one

- Jamie Pedersen**
(Prefers Democratic Party)
- Dan Harder**
(Prefers Republican Party)
- _____

**Legislative District No. 43
Representative Position No. 1**

partisan office
vote for one

- Nicole Macri**
(Prefers Democratic Party)
- John Peeples**
(Prefers Republican Party)
- _____

**Legislative District No. 43
Representative Position No. 2**

partisan office
vote for one

- Boris Joffe**
(Prefers Independent Party)
- Frank Chopp**
(Prefers Democratic Party)
- Claire Torstenbo**
(Prefers Republican Party)
- _____

King County

**Metropolitan King County
Council District No. 2**

nonpartisan office
vote for one

- Girmay Zahilay**
- Stan Lippmann**
- Larry Gossett**
- _____

For this office only: In order to vote for precinct committee officer, a partisan office, you must affirm that you are a Democrat or a Republican and may vote only for one candidate from the party you select. Your vote for a candidate affirms your affiliation with the same party as the candidate. This preference is private and will not be matched to your name or shared.

Precinct Committee Officer

Democratic Party Candidates

vote for one

- James Little**
I affirm I am a Democrat.
- David Booth**
I affirm I am a Democrat.

End of Ballot

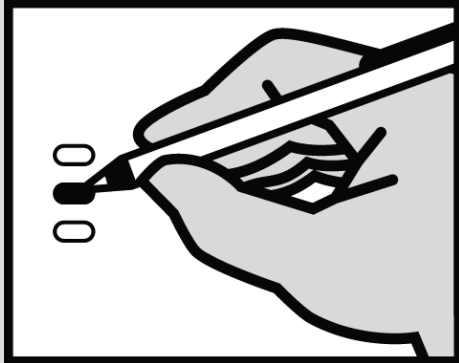
Vote both sides of ballot

August 7, 2018
 Official Primary and Special Election Ballot
 King County, Washington

VASHON
 1187.262
 Legislative District No. 34

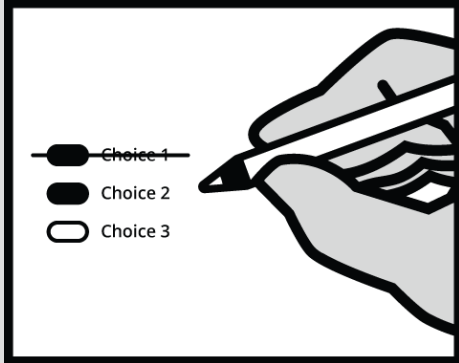
Instructions

How to vote



Completely fill in the oval next to your choice.

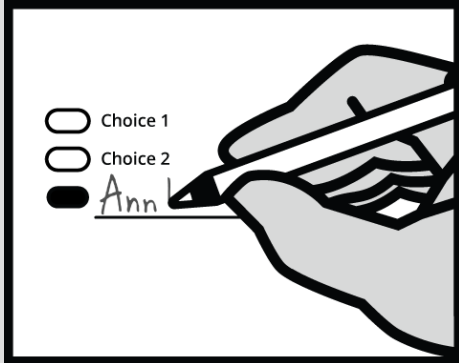
How to correct a mistake



To make a correction, draw a line through the entire choice.

You then have the option of making a different choice by completely filling in another oval.

Optional write-in



To add a new candidate, fill in the oval next to the write-in line and print the name on the write-in line.

Begin voting here



County

**King County
 Proposition No. 1
 Regular Property Tax Levy Automated
 Fingerprint Identification System
 Services**

The King County council has passed Ordinance 18674 concerning this proposition for the automated fingerprint identification system (AFIS) levy. This proposition would replace an expiring levy and fund continued operation of the regional AFIS Program to provide enhanced and accessible forensic fingerprint, palmprint and other technology and services to identify criminals and aid in the administration of justice. It would authorize an additional property tax for six years beginning with a 2018 rate of \$0.035 (3.5 cents) per \$1,000 of assessed valuation for collection in 2019. The 2019 levy amount would be the base for computing limitations under Chapter 84.55 RCW for collection in years 2020 through 2024. Should this proposition be:

- Approved**
- Rejected**

READ: Each candidate for partisan office may state a political party that he or she prefers. A candidate's preference does not imply that the candidate is nominated or endorsed by the party, or that the party approves of or associates with that candidate.

Federal

United States Senator
 partisan office
 vote for one

- Thor Amundson**
(Prefers Independent Party)
- Dave Strider**
(Prefers Independent Party)
- Joey Gibson**
(Prefers Republican Party)
- Mike Luke**
(Prefers Libertarian Party)
- GoodSpaceGuy**
(Prefers Republican Party)
- Clint R. Tannehill**
(Prefers Democratic Party)
- Maria Cantwell**
(Prefers Democratic Party)
- Susan Hutchison**
(Prefers Republican Party)
- Brad Chase**
(Prefers FDFR Party)
- Tim Owen**
(Prefers Republican Party)
- Matthew D. Heines**
(Prefers Republican Party)
- Sam Wright**
(Prefers The Human Rights Party)
- Art Coday**
(Prefers Republican Party)
- John Orlinski**
(Prefers Republican Party)
- Charlie R. Jackson**
(Prefers Independent Party)
- Keith Swank**
(Prefers Republican Party)
- Alex Tsimerman**
(Prefers StandupAmerica Party)
- RC Smith**
(Prefers Republican Party)
- Don L. Rivers**
(Prefers Democratic Party)
- Jennifer Gigi Ferguson**
(Prefers Independent Party)
- Steve Hoffman**
(Prefers Freedom Socialist Party)
- George H. Kalberer**
(Prefers Democratic Party)
- James Robert "Jimmie" Deal**
(Prefers Green Party)
- Roque "Rocky" De La Fuente**
(Prefers Republican Party)
- Jon Butler**
(Prefers Independent Party)
- Dave Bryant**
(Prefers Republican Party)
- Mohammad Said**
(Prefers Democratic Party)
- Matt Hawkins**
(Prefers Republican Party)
- Glen R. Stockwell**
(Prefers Republican Party)
- _____

**Continue voting
 other side**



Federal

**United States Representative
Congressional District No. 7**

partisan office
vote for one

- Craig Keller**
(Prefers Republican Party)
- Pramila Jayapal**
(Prefers Democratic Party)
- _____

State

**Legislative District No. 34
State Senator**

partisan office
vote for one

- Joe Nguyen**
(Prefers Democratic Party)
- Lois Schipper**
(Prefers Democratic Party)
- Sofia Aragon**
(Prefers Democratic Party)
- Courtney Lyle**
(Prefers Republican Party)
- Hillary Shaw**
(States No Party Preference)
- Annabel Quintero**
(Prefers Democratic Party)
- Lemuel W. Charleston**
(Prefers Democrat Party)
- Shannon Braddock**
(Prefers Democratic Party)
- Darla Green**
(Prefers Republican Party)
- Debi Wagner**
(Prefers Independent Party)
- Lisa Ryan Devereau**
(Prefers Democratic Party)
- _____

**Legislative District No. 34
Representative Position No. 1**

partisan office
vote for one

- Eileen L. Cody**
(Prefers Democratic Party)
- _____

**Legislative District No. 34
Representative Position No. 2**

partisan office
vote for one

- Joe Fitzgibbon**
(Prefers Democratic Party)
- _____

King County

**Metropolitan King County
Council District No. 8**

nonpartisan office
vote for one

- Joe McDermott**
- Goodspaceguy**
- Michael Robert Neher**
- _____

End of Ballot

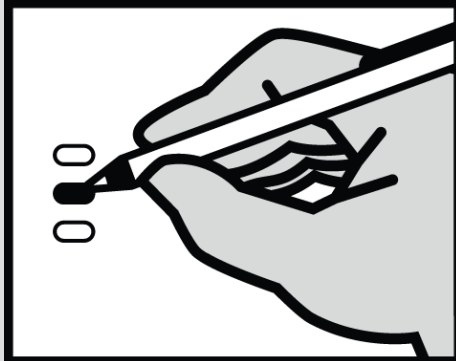
Vote both sides of ballot

November 6, 2018
 Official General and Special Election Ballot
 King County, Washington

SEA 43-2047
 2047.047
 Legislative District No. 43

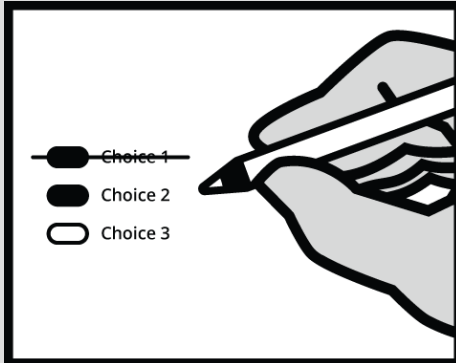
Instructions

How to vote



Completely fill in the oval next to your choice.

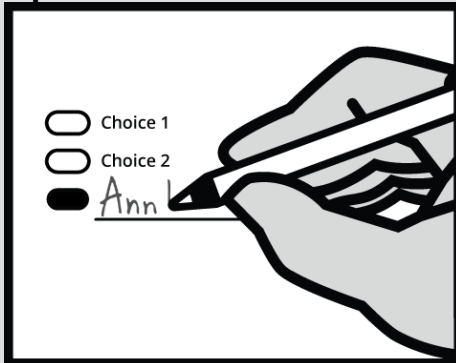
How to correct a mistake



To make a correction, draw a line through the entire choice.

You then have the option of making a different choice by completely filling in another oval.

Optional write-in



To add a new candidate, fill in the oval next to the write-in line and print the name on the write-in line.

State

Initiatives to the People

Initiative Measure No. 1631

Initiative Measure No. 1631 concerns pollution. This measure would charge pollution fees on sources of greenhouse gas pollutants and use the revenue to reduce pollution, promote clean energy, and address climate impacts, under oversight of a public board.

Should this measure be enacted into law?

- Yes
- No

Initiative Measure No. 1634

Initiative Measure No. 1634 concerns taxation of certain items intended for human consumption. This measure would prohibit new or increased local taxes, fees, or assessments on raw or processed foods or beverages (with exceptions), or ingredients thereof, unless effective by January 15, 2018, or generally applicable.

Should this measure be enacted into law?

- Yes
- No

Initiative Measure No. 1639

Initiative Measure No. 1639 concerns firearms. This measure would require increased background checks, training, age limitations, and waiting periods for sales or delivery of semiautomatic assault rifles; criminalize noncompliant storage upon unauthorized use; allow fees; and enact other provisions.

Should this measure be enacted into law?

- Yes
- No

State

Initiatives to the Legislature

Initiative Measure No. 940

Initiative Measure No. 940 concerns law enforcement. This measure would require law enforcement to receive violence de-escalation, mental-health, and first-aid training, and provide first-aid; and change standards for use of deadly force, adding a "good faith" standard and independent investigation.

Should this measure be enacted into law?

- Yes
- No

Advisory Votes

**Advisory Vote No. 19
 Engrossed Second Substitute Senate Bill 6269**

The legislature expanded, without a vote of the people, the oil spill response and administration taxes to crude oil or petroleum products received by pipeline, costing \$13,000,000 over ten years for government spending.

This tax increase should be:

- Repealed
- Maintained

READ: Each candidate for partisan office may state a political party that he or she prefers. A candidate's preference does not imply that the candidate is nominated or endorsed by the party, or that the party approves of or associates with that candidate.

Federal

United States Senator
 partisan office
 vote for one

- Maria Cantwell**
 (Prefers Democratic Party)
- Susan Hutchison**
 (Prefers Republican Party)
- _____

**United States Representative
 Congressional District No. 7**
 partisan office
 vote for one

- Pramila Jayapal**
 (Prefers Democratic Party)
- Craig Keller**
 (Prefers Republican Party)
- _____

Continue voting
 other side



State	Court of Appeals, Division No. 1, District No. 1	City
Legislative District No. 43 State Senator partisan office vote for one <input type="radio"/> Jamie Pedersen (Prefers Democratic Party) <input type="radio"/> Dan Harder (Prefers Republican Party) <input type="radio"/> _____	Judge Position No. 7 nonpartisan office vote for one <input type="radio"/> Marlin Appelwick <input type="radio"/> _____	Seattle Municipal Court Judge Position No. 4 nonpartisan office vote for one <input type="radio"/> Anita M. Crawford-Willis <input type="radio"/> _____
Legislative District No. 43 Representative Position No. 1 partisan office vote for one <input type="radio"/> Nicole Macri (Prefers Democratic Party) <input type="radio"/> John Peeples (Prefers Republican Party) <input type="radio"/> _____	District Court West Electoral District Judge Position No. 1 nonpartisan office vote for one <input type="radio"/> Lisa A. Paglisotti <input type="radio"/> _____	Seattle Municipal Court Judge Position No. 5 nonpartisan office vote for one <input type="radio"/> Willie Gregory <input type="radio"/> _____
Legislative District No. 43 Representative Position No. 2 partisan office vote for one <input type="radio"/> Frank Chopp (Prefers Democratic Party) <input type="radio"/> Claire Torstenbo (Prefers Republican Party) <input type="radio"/> _____	West Electoral District Judge Position No. 2 nonpartisan office vote for one <input type="radio"/> Mark C. Chow <input type="radio"/> _____	Seattle Municipal Court Judge Position No. 6 nonpartisan office vote for one <input type="radio"/> Faye Chess <input type="radio"/> _____
County Prosecuting Attorney nonpartisan office vote for one <input type="radio"/> Dan Satterberg <input type="radio"/> Daron Morris <input type="radio"/> _____	West Electoral District Judge Position No. 3 nonpartisan office vote for one <input type="radio"/> Art Chapman <input type="radio"/> _____	Seattle Municipal Court Judge Position No. 7 nonpartisan office vote for one <input type="radio"/> Damon Shadid <input type="radio"/> _____
State Supreme Court Justice Position No. 2 nonpartisan office vote for one <input type="radio"/> Susan Owens <input type="radio"/> _____	West Electoral District Judge Position No. 4 nonpartisan office vote for one <input type="radio"/> Gregg Hirakawa <input type="radio"/> _____	City of Seattle Proposition No. 1 Families, Education, Preschool, and Promise Levy The City of Seattle's Proposition 1 concerns renewing and enhancing services to achieve equity in educational outcomes. This proposition would replace two expiring levies and initially fund expanded early learning and preschool, college and K-12 education support, K-12 student health, and job readiness opportunities, as provided in Ordinance 125604. Consistent with RCW 84.55, it would increase regular property taxes for seven years. The 2019 tax increase, up to \$0.365/\$1,000 of assessed value, would be used to compute limitations for subsequent levies, with 1% annual increases. Qualifying seniors and others would be exempt under RCW 84.36.381. Should this levy be approved? <input type="radio"/> Yes <input type="radio"/> No
Justice Position No. 8 nonpartisan office vote for one <input type="radio"/> Nathan Choi <input type="radio"/> Steve Gonzalez <input type="radio"/> _____	City Seattle Municipal Court Judge Position No. 1 nonpartisan office vote for one <input type="radio"/> Ed McKenna <input type="radio"/> _____	
Justice Position No. 9 nonpartisan office vote for one <input type="radio"/> Sheryl Gordon McCloud <input type="radio"/> _____	Seattle Municipal Court Judge Position No. 2 nonpartisan office vote for one <input type="radio"/> Andrea Chin <input type="radio"/> _____	
Court of Appeals, Division No. 1, District No. 1 Judge Position No. 4 short and full term nonpartisan office vote for one <input type="radio"/> Beth M. Andrus <input type="radio"/> _____	Seattle Municipal Court Judge Position No. 3 nonpartisan office vote for one <input type="radio"/> Adam Eisenberg <input type="radio"/> _____	

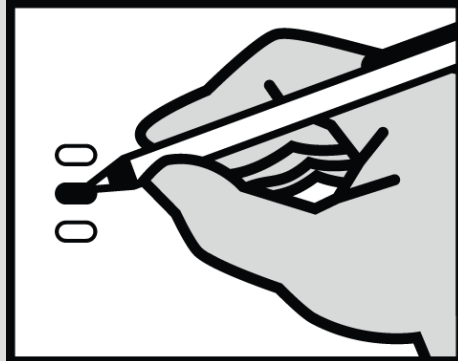
Vote both sides of ballot

November 6, 2018
 Official General and Special Election Ballot
 King County, Washington

VASHON
 1187.262
 Legislative District No. 34

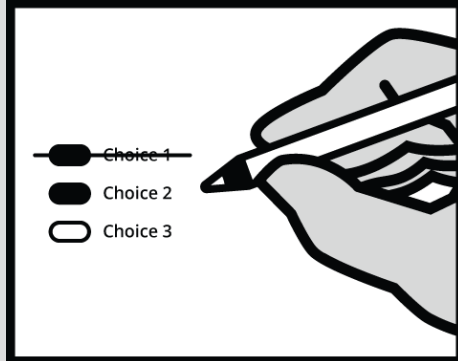
Instructions

How to vote



Completely fill in the oval next to your choice.

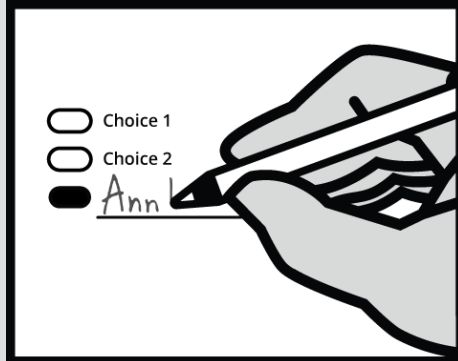
How to correct a mistake



To make a correction, draw a line through the entire choice.

You then have the option of making a different choice by completely filling in another oval.

Optional write-in



To add a new candidate, fill in the oval next to the write-in line and print the name on the write-in line.

State

Initiatives to the People

Initiative Measure No. 1631

Initiative Measure No. 1631 concerns pollution. This measure would charge pollution fees on sources of greenhouse gas pollutants and use the revenue to reduce pollution, promote clean energy, and address climate impacts, under oversight of a public board.

Should this measure be enacted into law?

- Yes
- No

Initiative Measure No. 1634

Initiative Measure No. 1634 concerns taxation of certain items intended for human consumption. This measure would prohibit new or increased local taxes, fees, or assessments on raw or processed foods or beverages (with exceptions), or ingredients thereof, unless effective by January 15, 2018, or generally applicable.

Should this measure be enacted into law?

- Yes
- No

Initiative Measure No. 1639

Initiative Measure No. 1639 concerns firearms. This measure would require increased background checks, training, age limitations, and waiting periods for sales or delivery of semiautomatic assault rifles; criminalize noncompliant storage upon unauthorized use; allow fees; and enact other provisions.

Should this measure be enacted into law?

- Yes
- No

State

Initiatives to the Legislature

Initiative Measure No. 940

Initiative Measure No. 940 concerns law enforcement. This measure would require law enforcement to receive violence de-escalation, mental-health, and first-aid training, and provide first-aid; and change standards for use of deadly force, adding a "good faith" standard and independent investigation.

Should this measure be enacted into law?

- Yes
- No

Advisory Votes

**Advisory Vote No. 19
 Engrossed Second Substitute Senate Bill 6269**

The legislature expanded, without a vote of the people, the oil spill response and administration taxes to crude oil or petroleum products received by pipeline, costing \$13,000,000 over ten years for government spending.

This tax increase should be:

- Repealed
- Maintained

READ: Each candidate for partisan office may state a political party that he or she prefers. A candidate's preference does not imply that the candidate is nominated or endorsed by the party, or that the party approves of or associates with that candidate.

Federal

United States Senator
 partisan office
 vote for one

- Maria Cantwell**
 (Prefers Democratic Party)
- Susan Hutchison**
 (Prefers Republican Party)
- _____

**United States Representative
 Congressional District No. 7**
 partisan office
 vote for one

- Pramila Jayapal**
 (Prefers Democratic Party)
- Craig Keller**
 (Prefers Republican Party)
- _____

Continue voting
 other side



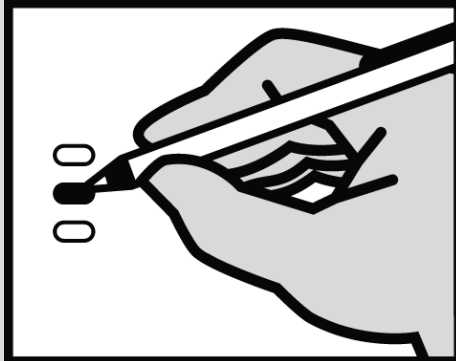
State	Court of Appeals, Division No. 1, District No. 1
Legislative District No. 34 State Senator partisan office vote for one	Judge Position No. 7 nonpartisan office vote for one
<input type="radio"/> Joe Nguyen (Prefers Democratic Party) <input type="radio"/> Shannon Braddock (Prefers Democratic Party) <input type="radio"/> _____	<input type="radio"/> Marlin Appelwick <input type="radio"/> _____
	District Court
Legislative District No. 34 Representative Position No. 1 partisan office vote for one	Southwest Electoral District Judge Position No. 1 nonpartisan office vote for one
<input type="radio"/> Eileen L. Cody (Prefers Democratic Party) <input type="radio"/> _____	<input type="radio"/> David M. Christie <input type="radio"/> _____
Legislative District No. 34 Representative Position No. 2 partisan office vote for one	Southwest Electoral District Judge Position No. 2 nonpartisan office vote for one
<input type="radio"/> Joe Fitzgibbon (Prefers Democratic Party) <input type="radio"/> _____	<input type="radio"/> Susan L. Mahoney <input type="radio"/> _____
County	Southwest Electoral District Judge Position No. 3 nonpartisan office vote for one
Prosecuting Attorney nonpartisan office vote for one	<input type="radio"/> Laurel Gibson <input type="radio"/> _____
<input type="radio"/> Dan Satterberg <input type="radio"/> Daron Morris <input type="radio"/> _____	Southwest Electoral District Judge Position No. 4 nonpartisan office vote for one
State Supreme Court	<input type="radio"/> D. Mark Eide <input type="radio"/> _____
Justice Position No. 2 nonpartisan office vote for one	Southwest Electoral District Judge Position No. 5 nonpartisan office vote for one
<input type="radio"/> Susan Owens <input type="radio"/> _____	<input type="radio"/> Elizabeth D. Stephenson <input type="radio"/> _____
Justice Position No. 8 nonpartisan office vote for one	
<input type="radio"/> Nathan Choi <input type="radio"/> Steve Gonzalez <input type="radio"/> _____	Vote both sides of ballot
Justice Position No. 9 nonpartisan office vote for one	
<input type="radio"/> Sheryl Gordon McCloud <input type="radio"/> _____	
Court of Appeals, Division No. 1, District No. 1	
Judge Position No. 4 short and full term nonpartisan office vote for one	
<input type="radio"/> Beth M. Andrus <input type="radio"/> _____	

November 6, 2018
 Official General and Special Election Ballot
 King County, Washington

SEA 36-1323
 1323.323
 Legislative District No. 36

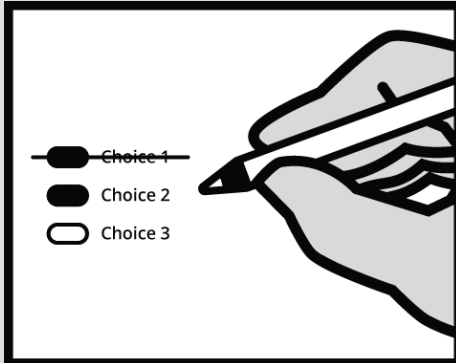
Instructions

How to vote



Completely fill in the oval next to your choice.

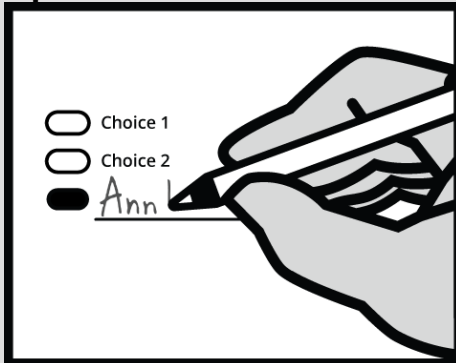
How to correct a mistake



To make a correction, draw a line through the entire choice.

You then have the option of making a different choice by completely filling in another oval.

Optional write-in



To add a new candidate, fill in the oval next to the write-in line and print the name on the write-in line.

State

Initiatives to the People

Initiative Measure No. 1631

Initiative Measure No. 1631 concerns pollution. This measure would charge pollution fees on sources of greenhouse gas pollutants and use the revenue to reduce pollution, promote clean energy, and address climate impacts, under oversight of a public board.

Should this measure be enacted into law?

- Yes
- No

Initiative Measure No. 1634

Initiative Measure No. 1634 concerns taxation of certain items intended for human consumption. This measure would prohibit new or increased local taxes, fees, or assessments on raw or processed foods or beverages (with exceptions), or ingredients thereof, unless effective by January 15, 2018, or generally applicable.

Should this measure be enacted into law?

- Yes
- No

Initiative Measure No. 1639

Initiative Measure No. 1639 concerns firearms. This measure would require increased background checks, training, age limitations, and waiting periods for sales or delivery of semiautomatic assault rifles; criminalize noncompliant storage upon unauthorized use; allow fees; and enact other provisions.

Should this measure be enacted into law?

- Yes
- No

State

Initiatives to the Legislature

Initiative Measure No. 940

Initiative Measure No. 940 concerns law enforcement. This measure would require law enforcement to receive violence de-escalation, mental-health, and first-aid training, and provide first-aid; and change standards for use of deadly force, adding a "good faith" standard and independent investigation.

Should this measure be enacted into law?

- Yes
- No

Advisory Votes

**Advisory Vote No. 19
 Engrossed Second Substitute Senate Bill 6269**

The legislature expanded, without a vote of the people, the oil spill response and administration taxes to crude oil or petroleum products received by pipeline, costing \$13,000,000 over ten years for government spending.

This tax increase should be:

- Repealed
- Maintained

READ: Each candidate for partisan office may state a political party that he or she prefers. A candidate's preference does not imply that the candidate is nominated or endorsed by the party, or that the party approves of or associates with that candidate.

Federal

United States Senator
 partisan office
 vote for one

- Maria Cantwell**
 (Prefers Democratic Party)
- Susan Hutchison**
 (Prefers Republican Party)
- _____

**United States Representative
 Congressional District No. 7**
 partisan office
 vote for one

- Pramila Jayapal**
 (Prefers Democratic Party)
- Craig Keller**
 (Prefers Republican Party)
- _____

Continue voting
 other side



State	Court of Appeals, Division No. 1, District No. 1	City
Legislative District No. 36 State Senator partisan office vote for one <input type="radio"/> Reuven M. Carlyle (Prefers Democratic Party) <input type="radio"/> Bryan Simonson (Prefers Libertarian Party) <input type="radio"/> _____	Judge Position No. 7 nonpartisan office vote for one <input type="radio"/> Marlin Appelwick <input type="radio"/> _____	Seattle Municipal Court Judge Position No. 4 nonpartisan office vote for one <input type="radio"/> Anita M. Crawford-Willis <input type="radio"/> _____
Legislative District No. 36 Representative Position No. 1 partisan office vote for one <input type="radio"/> Noel Christina Frame (Prefers Democratic Party) <input type="radio"/> Sydney Gillman Wissel (Prefers Libertarian Party) <input type="radio"/> _____	District Court West Electoral District Judge Position No. 1 nonpartisan office vote for one <input type="radio"/> Lisa A. Paglisotti <input type="radio"/> _____	Seattle Municipal Court Judge Position No. 5 nonpartisan office vote for one <input type="radio"/> Willie Gregory <input type="radio"/> _____
Legislative District No. 36 Representative Position No. 2 partisan office vote for one <input type="radio"/> Gael Tarleton (Prefers Democratic Party) <input type="radio"/> Matt Dubin (Prefers Libertarian Party) <input type="radio"/> _____	West Electoral District Judge Position No. 2 nonpartisan office vote for one <input type="radio"/> Mark C. Chow <input type="radio"/> _____	Seattle Municipal Court Judge Position No. 6 nonpartisan office vote for one <input type="radio"/> Faye Chess <input type="radio"/> _____
County Prosecuting Attorney nonpartisan office vote for one <input type="radio"/> Dan Satterberg <input type="radio"/> Daron Morris <input type="radio"/> _____	West Electoral District Judge Position No. 3 nonpartisan office vote for one <input type="radio"/> Art Chapman <input type="radio"/> _____	Seattle Municipal Court Judge Position No. 7 nonpartisan office vote for one <input type="radio"/> Damon Shadid <input type="radio"/> _____
State Supreme Court Justice Position No. 2 nonpartisan office vote for one <input type="radio"/> Susan Owens <input type="radio"/> _____	West Electoral District Judge Position No. 4 nonpartisan office vote for one <input type="radio"/> Gregg Hirakawa <input type="radio"/> _____	City of Seattle Proposition No. 1 Families, Education, Preschool, and Promise Levy The City of Seattle's Proposition 1 concerns renewing and enhancing services to achieve equity in educational outcomes. This proposition would replace two expiring levies and initially fund expanded early learning and preschool, college and K-12 education support, K-12 student health, and job readiness opportunities, as provided in Ordinance 125604. Consistent with RCW 84.55, it would increase regular property taxes for seven years. The 2019 tax increase, up to \$0.365/\$1,000 of assessed value, would be used to compute limitations for subsequent levies, with 1% annual increases. Qualifying seniors and others would be exempt under RCW 84.36.381. Should this levy be approved? <input type="radio"/> Yes <input type="radio"/> No
Justice Position No. 8 nonpartisan office vote for one <input type="radio"/> Nathan Choi <input type="radio"/> Steve Gonzalez <input type="radio"/> _____	City Seattle Municipal Court Judge Position No. 1 nonpartisan office vote for one <input type="radio"/> Ed McKenna <input type="radio"/> _____	
Justice Position No. 9 nonpartisan office vote for one <input type="radio"/> Sheryl Gordon McCloud <input type="radio"/> _____	Seattle Municipal Court Judge Position No. 2 nonpartisan office vote for one <input type="radio"/> Andrea Chin <input type="radio"/> _____	
Court of Appeals, Division No. 1, District No. 1 Judge Position No. 4 short and full term nonpartisan office vote for one <input type="radio"/> Beth M. Andrus <input type="radio"/> _____	Seattle Municipal Court Judge Position No. 3 nonpartisan office vote for one <input type="radio"/> Adam Eisenberg <input type="radio"/> _____	

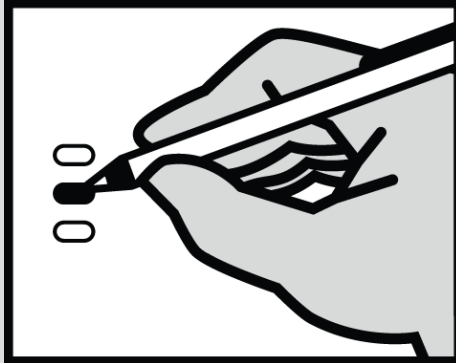
Vote both sides of ballot

November 6, 2018
 Official General and Special Election Ballot
 King County, Washington

RED 48-0940
 0940.465
 Legislative District No. 48

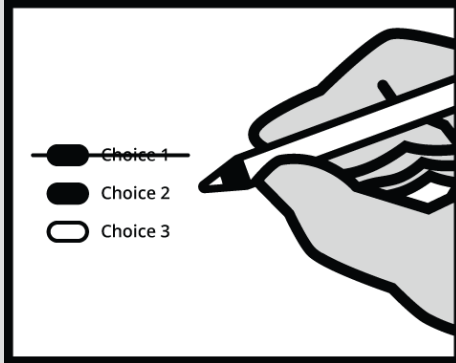
Instructions

How to vote



Completely fill in the oval next to your choice.

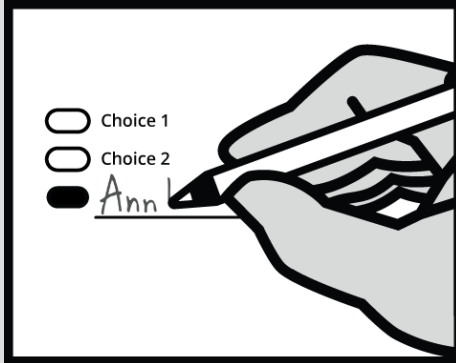
How to correct a mistake



To make a correction, draw a line through the entire choice.

You then have the option of making a different choice by completely filling in another oval.

Optional write-in



To add a new candidate, fill in the oval next to the write-in line and print the name on the write-in line.

State

Initiatives to the People

Initiative Measure No. 1631

Initiative Measure No. 1631 concerns pollution. This measure would charge pollution fees on sources of greenhouse gas pollutants and use the revenue to reduce pollution, promote clean energy, and address climate impacts, under oversight of a public board.

Should this measure be enacted into law?

- Yes
- No

Initiative Measure No. 1634

Initiative Measure No. 1634 concerns taxation of certain items intended for human consumption. This measure would prohibit new or increased local taxes, fees, or assessments on raw or processed foods or beverages (with exceptions), or ingredients thereof, unless effective by January 15, 2018, or generally applicable.

Should this measure be enacted into law?

- Yes
- No

Initiative Measure No. 1639

Initiative Measure No. 1639 concerns firearms. This measure would require increased background checks, training, age limitations, and waiting periods for sales or delivery of semiautomatic assault rifles; criminalize noncompliant storage upon unauthorized use; allow fees; and enact other provisions.

Should this measure be enacted into law?

- Yes
- No

State

Initiatives to the Legislature

Initiative Measure No. 940

Initiative Measure No. 940 concerns law enforcement. This measure would require law enforcement to receive violence de-escalation, mental-health, and first-aid training, and provide first-aid; and change standards for use of deadly force, adding a "good faith" standard and independent investigation.

Should this measure be enacted into law?

- Yes
- No

Advisory Votes

**Advisory Vote No. 19
 Engrossed Second Substitute Senate Bill 6269**

The legislature expanded, without a vote of the people, the oil spill response and administration taxes to crude oil or petroleum products received by pipeline, costing \$13,000,000 over ten years for government spending.

This tax increase should be:

- Repealed
- Maintained

READ: Each candidate for partisan office may state a political party that he or she prefers. A candidate's preference does not imply that the candidate is nominated or endorsed by the party, or that the party approves of or associates with that candidate.

Federal

United States Senator
 partisan office
 vote for one

- Maria Cantwell**
 (Prefers Democratic Party)
- Susan Hutchison**
 (Prefers Republican Party)
- _____

**United States Representative
 Congressional District No. 1**
 partisan office
 vote for one

- Suzan DelBene**
 (Prefers Democratic Party)
- Jeffrey Beeler**
 (Prefers Republican Party)
- _____

Continue voting
 other side



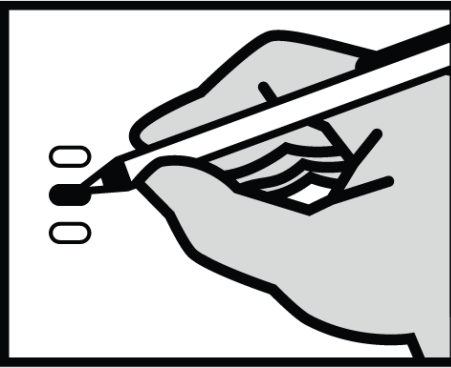
State	Court of Appeals, Division No. 1, District No. 1
Legislative District No. 48 State Senator partisan office vote for one	Judge Position No. 7 nonpartisan office vote for one
<input type="radio"/> Patty Kuderer (Prefers Democratic Party) <input type="radio"/> Rodney Tom (Prefers Democratic Party) <input type="radio"/> _____	<input type="radio"/> Marlin Appelwick <input type="radio"/> _____
	District Court
Legislative District No. 48 Representative Position No. 1 partisan office vote for one	Northeast Electoral District Judge Position No. 1 nonpartisan office vote for one
<input type="radio"/> Vandana Slatter (Prefers Democratic Party) <input type="radio"/> _____	<input type="radio"/> Marcus Naylor <input type="radio"/> Joshua Schaer <input type="radio"/> _____
Legislative District No. 48 Representative Position No. 2 partisan office vote for one	Northeast Electoral District Judge Position No. 2 nonpartisan office vote for one
<input type="radio"/> Amy Walen (Prefers Democratic Party) <input type="radio"/> Cindi Bright (Prefers Democratic Party) <input type="radio"/> _____	<input type="radio"/> Ketu Shah <input type="radio"/> _____
County	Northeast Electoral District Judge Position No. 3 nonpartisan office vote for one
Prosecuting Attorney nonpartisan office vote for one	<input type="radio"/> Lisa O'Toole <input type="radio"/> _____
<input type="radio"/> Dan Satterberg <input type="radio"/> Daron Morris <input type="radio"/> _____	Northeast Electoral District Judge Position No. 4 nonpartisan office vote for one
State Supreme Court	<input type="radio"/> Peter L. Nault <input type="radio"/> _____
Justice Position No. 2 nonpartisan office vote for one	Northeast Electoral District Judge Position No. 5 nonpartisan office vote for one
<input type="radio"/> Susan Owens <input type="radio"/> _____	<input type="radio"/> David A. Steiner <input type="radio"/> _____
Justice Position No. 8 nonpartisan office vote for one	Northeast Electoral District Judge Position No. 6 nonpartisan office vote for one
<input type="radio"/> Nathan Choi <input type="radio"/> Steve Gonzalez <input type="radio"/> _____	<input type="radio"/> Michael Finkle <input type="radio"/> _____
Justice Position No. 9 nonpartisan office vote for one	Northeast Electoral District Judge Position No. 7 nonpartisan office vote for one
<input type="radio"/> Sheryl Gordon McCloud <input type="radio"/> _____	<input type="radio"/> Donna Tucker <input type="radio"/> _____
Court of Appeals, Division No. 1, District No. 1	
Judge Position No. 4 short and full term nonpartisan office vote for one	Vote both sides of ballot
<input type="radio"/> Beth M. Andrus <input type="radio"/> _____	

November 6, 2018
 Official General and Special Election Ballot
 King County, Washington

SEA 43-2047
 2047.047
 Legislative District No. 43

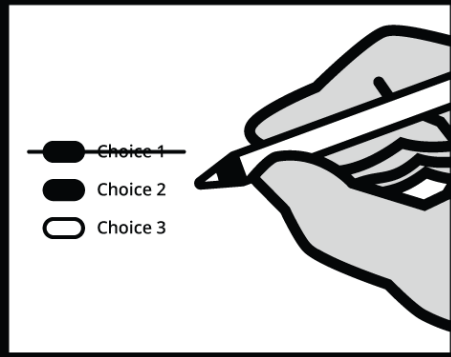
Instructions

How to vote



Completely fill in the oval next to your choice.

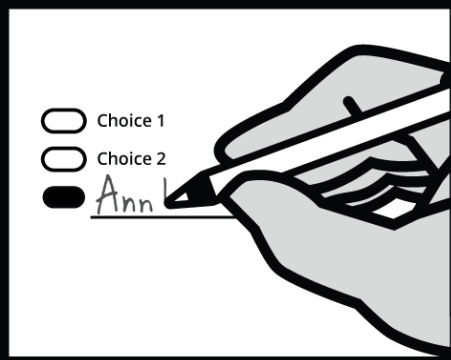
How to correct a mistake



To make a correction, draw a line through the entire choice.

You then have the option of making a different choice by completely filling in another oval.

Optional write-in



To add a new candidate, fill in the oval next to the write-in line and print the name on the write-in line.

State

Initiatives to the People

Initiative Measure No. 1631

Initiative Measure No. 1631 concerns pollution. This measure would charge pollution fees on sources of greenhouse gas pollutants and use the revenue to reduce pollution, promote clean energy, and address climate impacts, under oversight of a public board.

Should this measure be enacted into law?

- Yes
- No

Initiative Measure No. 1634

Initiative Measure No. 1634 concerns taxation of certain items intended for human consumption. This measure would prohibit new or increased local taxes, fees, or assessments on raw or processed foods or beverages (with exceptions), or ingredients thereof, unless effective by January 15, 2018, or generally applicable.

Should this measure be enacted into law?

- Yes
- No

Initiative Measure No. 1639

Initiative Measure No. 1639 concerns firearms. This measure would require increased background checks, training, age limitations, and waiting periods for sales or delivery of semiautomatic assault rifles; criminalize noncompliant storage upon unauthorized use; allow fees; and enact other provisions.

Should this measure be enacted into law?

- Yes
- No

Initiative Measure No. 940

Initiative Measure No. 940 concerns law enforcement. This measure would require law enforcement to receive violence de-escalation, mental-health, and first-aid training, and provide first-aid; and change standards for use of deadly force, adding a "good faith" standard and independent investigation.

Should this measure be enacted into law?

- Yes
- No

Advisory Votes

**Advisory Vote No. 19
 Engrossed Second Substitute Senate Bill 6269**

The legislature expanded, without a vote of the people, the oil spill response and administration taxes to crude oil or petroleum products received by pipeline, costing \$13,000,000 over ten years for government spending.

This tax increase should be:

- Repealed
- Maintained

READ: Each candidate for partisan office may state a political party that he or she prefers. A candidate's preference does not imply that the candidate is nominated or endorsed by the party, or that the party approves of or associates with that candidate.

Federal

United States Senator

partisan office
 vote for one

- Maria Cantwell**
 (Prefers Democratic Party)
- Susan Hutchison**
 (Prefers Republican Party)
- _____

**United States Representative
 Congressional District No. 7**

partisan office
 vote for one

- Pramila Jayapal**
 (Prefers Democratic Party)
- Craig Keller**
 (Prefers Republican Party)
- _____

State

**Legislative District No. 43
 State Senator**

partisan office
 vote for one

- Jamie Pedersen**
 (Prefers Democratic Party)
- Dan Harder**
 (Prefers Republican Party)
- _____

**Legislative District No. 43
 Representative Position No. 1**

partisan office
 vote for one

- Nicole Macri**
 (Prefers Democratic Party)
- John Peeples**
 (Prefers Republican Party)
- _____

**Legislative District No. 43
 Representative Position No. 2**

partisan office
 vote for one

- Frank Chopp**
 (Prefers Democratic Party)
- Claire Torstenbo**
 (Prefers Republican Party)
- _____

County

Prosecuting Attorney

nonpartisan office
 vote for one

- Dan Satterberg**
- Daron Morris**
- _____

Assessor

nonpartisan office
 vote for one

- John Wilson**
- _____

Director of Elections

nonpartisan office
 vote for one

- Julie Wise**
- Mark Greene**
- _____

**Metropolitan King County
 Council District No. 2**

nonpartisan office
 vote for one

- Girmay Zahilay**
- Larry Gossett**
- _____

Continue voting
 other side



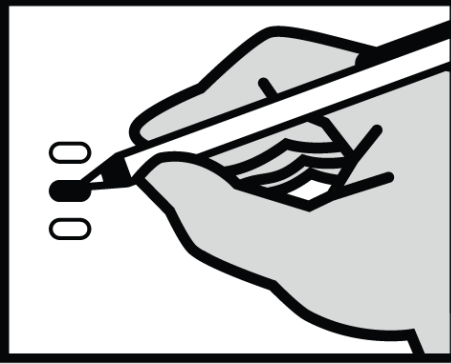
State Supreme Court	City
Justice Position No. 2 nonpartisan office vote for one <input type="radio"/> Susan Owens <input type="radio"/> _____	Seattle Municipal Court Judge Position No. 3 nonpartisan office vote for one <input type="radio"/> Adam Eisenberg <input type="radio"/> _____
Justice Position No. 8 nonpartisan office vote for one <input type="radio"/> Nathan Choi <input type="radio"/> Steve Gonzalez <input type="radio"/> _____	Seattle Municipal Court Judge Position No. 4 nonpartisan office vote for one <input type="radio"/> Anita M. Crawford-Willis <input type="radio"/> _____
Justice Position No. 9 nonpartisan office vote for one <input type="radio"/> Sheryl Gordon McCloud <input type="radio"/> _____	Seattle Municipal Court Judge Position No. 5 nonpartisan office vote for one <input type="radio"/> Willie Gregory <input type="radio"/> _____
Court of Appeals, Division No. 1, District No. 1 Judge Position No. 4 short and full term nonpartisan office vote for one <input type="radio"/> Beth M. Andrus <input type="radio"/> _____	Seattle Municipal Court Judge Position No. 6 nonpartisan office vote for one <input type="radio"/> Faye Chess <input type="radio"/> _____
Judge Position No. 7 nonpartisan office vote for one <input type="radio"/> Marlin Appelwick <input type="radio"/> _____	Seattle Municipal Court Judge Position No. 7 nonpartisan office vote for one <input type="radio"/> Damon Shadid <input type="radio"/> _____
District Court West Electoral District Judge Position No. 1 nonpartisan office vote for one <input type="radio"/> Lisa A. Paglisotti <input type="radio"/> _____	City of Seattle Proposition No. 1 Families, Education, Preschool, and Promise Levy The City of Seattle's Proposition 1 concerns renewing and enhancing services to achieve equity in educational outcomes. This proposition would replace two expiring levies and initially fund expanded early learning and preschool, college and K-12 education support, K-12 student health, and job readiness opportunities, as provided in Ordinance 125604. Consistent with RCW 84.55, it would increase regular property taxes for seven years. The 2019 tax increase, up to \$0.365/\$1,000 of assessed value, would be used to compute limitations for subsequent levies, with 1% annual increases. Qualifying seniors and others would be exempt under RCW 84.36.381. Should this levy be approved? <input type="radio"/> Yes <input type="radio"/> No
West Electoral District Judge Position No. 2 nonpartisan office vote for one <input type="radio"/> Mark C. Chow <input type="radio"/> _____	
West Electoral District Judge Position No. 3 nonpartisan office vote for one <input type="radio"/> Art Chapman <input type="radio"/> _____	
West Electoral District Judge Position No. 4 nonpartisan office vote for one <input type="radio"/> Gregg Hirakawa <input type="radio"/> _____	
West Electoral District Judge Position No. 5 nonpartisan office vote for one <input type="radio"/> Anne C. Harper <input type="radio"/> _____	
City Seattle Municipal Court Judge Position No. 1 nonpartisan office vote for one <input type="radio"/> Ed McKenna <input type="radio"/> _____	Vote both sides of ballot
Seattle Municipal Court Judge Position No. 2 nonpartisan office vote for one <input type="radio"/> Andrea Chin <input type="radio"/> _____	

November 6, 2018
 Official General and Special Election Ballot
 King County, Washington

VASHON
 1187.262
 Legislative District No. 34

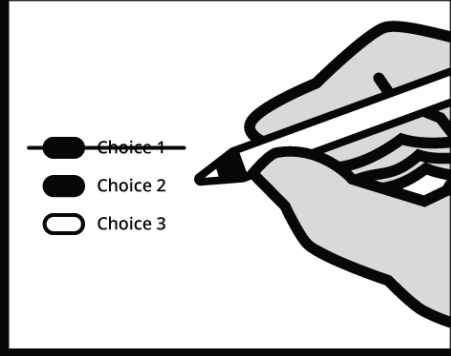
Instructions

How to vote



Completely fill in the oval next to your choice.

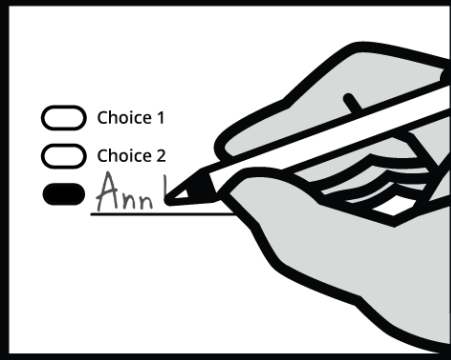
How to correct a mistake



To make a correction, draw a line through the entire choice.

You then have the option of making a different choice by completely filling in another oval.

Optional write-in



To add a new candidate, fill in the oval next to the write-in line and print the name on the write-in line.

State

Initiatives to the People

Initiative Measure No. 1631

Initiative Measure No. 1631 concerns pollution. This measure would charge pollution fees on sources of greenhouse gas pollutants and use the revenue to reduce pollution, promote clean energy, and address climate impacts, under oversight of a public board.

Should this measure be enacted into law?

- Yes
- No

Initiative Measure No. 1634

Initiative Measure No. 1634 concerns taxation of certain items intended for human consumption. This measure would prohibit new or increased local taxes, fees, or assessments on raw or processed foods or beverages (with exceptions), or ingredients thereof, unless effective by January 15, 2018, or generally applicable.

Should this measure be enacted into law?

- Yes
- No

Initiative Measure No. 1639

Initiative Measure No. 1639 concerns firearms. This measure would require increased background checks, training, age limitations, and waiting periods for sales or delivery of semiautomatic assault rifles; criminalize noncompliant storage upon unauthorized use; allow fees; and enact other provisions.

Should this measure be enacted into law?

- Yes
- No

Initiative Measure No. 940

Initiative Measure No. 940 concerns law enforcement. This measure would require law enforcement to receive violence de-escalation, mental-health, and first-aid training, and provide first-aid; and change standards for use of deadly force, adding a "good faith" standard and independent investigation.

Should this measure be enacted into law?

- Yes
- No

Advisory Votes

**Advisory Vote No. 19
 Engrossed Second Substitute Senate Bill 6269**

The legislature expanded, without a vote of the people, the oil spill response and administration taxes to crude oil or petroleum products received by pipeline, costing \$13,000,000 over ten years for government spending.

This tax increase should be:

- Repealed
- Maintained

READ: Each candidate for partisan office may state a political party that he or she prefers. A candidate's preference does not imply that the candidate is nominated or endorsed by the party, or that the party approves of or associates with that candidate.

Federal

United States Senator

partisan office
 vote for one

- Maria Cantwell**
 (Prefers Democratic Party)
- Susan Hutchison**
 (Prefers Republican Party)
- _____

**United States Representative
 Congressional District No. 7**

partisan office
 vote for one

- Pramila Jayapal**
 (Prefers Democratic Party)
- Craig Keller**
 (Prefers Republican Party)
- _____

State

**Legislative District No. 34
 State Senator**

partisan office
 vote for one

- Joe Nguyen**
 (Prefers Democratic Party)
- Shannon Braddock**
 (Prefers Democratic Party)
- _____

**Legislative District No. 34
 Representative Position No. 1**

partisan office
 vote for one

- Eileen L. Cody**
 (Prefers Democratic Party)
- _____

**Legislative District No. 34
 Representative Position No. 2**

partisan office
 vote for one

- Joe Fitzgibbon**
 (Prefers Democratic Party)
- _____

County

Prosecuting Attorney

nonpartisan office
 vote for one

- Dan Satterberg**
- Daron Morris**
- _____

Assessor

nonpartisan office
 vote for one

- John Wilson**
- _____

Director of Elections

nonpartisan office
 vote for one

- Julie Wise**
- Mark Greene**
- _____

**Metropolitan King County
 Council District No. 8**

nonpartisan office
 vote for one

- Joe McDermott**
- Michael Robert Neher**
- _____

Continue voting
 other side



State Supreme Court

Justice Position No. 2
nonpartisan office
vote for one

- Susan Owens
- _____

Justice Position No. 8
nonpartisan office
vote for one

- Nathan Choi
- Steve Gonzalez
- _____

Justice Position No. 9
nonpartisan office
vote for one

- Sheryl Gordon McCloud
- _____

Court of Appeals, Division No. 1, District No. 1

Judge Position No. 4
short and full term
nonpartisan office
vote for one

- Beth M. Andrus
- _____

Judge Position No. 7
nonpartisan office
vote for one

- Marlin Appelwick
- _____

District Court

Southwest Electoral District Judge Position No. 1
nonpartisan office
vote for one

- David M. Christie
- _____

Southwest Electoral District Judge Position No. 2
nonpartisan office
vote for one

- Susan L. Mahoney
- _____

Southwest Electoral District Judge Position No. 3
nonpartisan office
vote for one

- Laurel Gibson
- _____

Southwest Electoral District Judge Position No. 4
nonpartisan office
vote for one

- D. Mark Eide
- _____

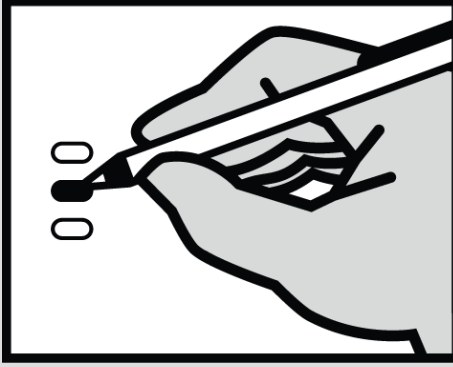
Southwest Electoral District Judge Position No. 5
nonpartisan office
vote for one

- Elizabeth D. Stephenson
- _____

Vote both sides of ballot

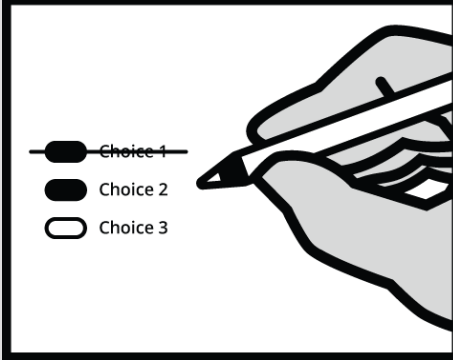
Instructions

How to vote



Completely fill in the oval next to your choice.

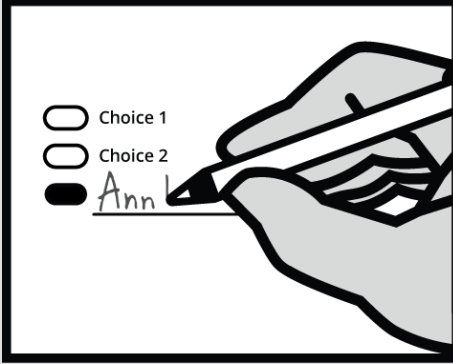
How to correct a mistake



To make a correction, draw a line through the entire choice.

You then have the option of making a different choice by completely filling in another oval.

Optional write-in



To add a new candidate, fill in the oval next to the write-in line and print the name on the write-in line.

State

Initiatives to the People

Initiative Measure No. 1631

Initiative Measure No. 1631 concerns pollution. This measure would charge pollution fees on sources of greenhouse gas pollutants and use the revenue to reduce pollution, promote clean energy, and address climate impacts, under oversight of a public board.

Should this measure be enacted into law?

- Yes
- No

Initiative Measure No. 1634

Initiative Measure No. 1634 concerns taxation of certain items intended for human consumption. This measure would prohibit new or increased local taxes, fees, or assessments on raw or processed foods or beverages (with exceptions), or ingredients thereof, unless effective by January 15, 2018, or generally applicable.

Should this measure be enacted into law?

- Yes
- No

Initiative Measure No. 1639

Initiative Measure No. 1639 concerns firearms. This measure would require increased background checks, training, age limitations, and waiting periods for sales or delivery of semiautomatic assault rifles; criminalize noncompliant storage upon unauthorized use; allow fees; and enact other provisions.

Should this measure be enacted into law?

- Yes
- No

Initiative Measure No. 940

Initiative Measure No. 940 concerns law enforcement. This measure would require law enforcement to receive violence de-escalation, mental-health, and first-aid training, and provide first-aid; and change standards for use of deadly force, adding a "good faith" standard and independent investigation.

Should this measure be enacted into law?

- Yes
- No

Advisory Votes

**Advisory Vote No. 19
 Engrossed Second Substitute Senate Bill 6269**

The legislature expanded, without a vote of the people, the oil spill response and administration taxes to crude oil or petroleum products received by pipeline, costing \$13,000,000 over ten years for government spending.

This tax increase should be:

- Repealed
- Maintained

READ: Each candidate for partisan office may state a political party that he or she prefers. A candidate's preference does not imply that the candidate is nominated or endorsed by the party, or that the party approves of or associates with that candidate.

Federal

United States Senator

partisan office
 vote for one

- Maria Cantwell**
 (Prefers Democratic Party)
- Susan Hutchison**
 (Prefers Republican Party)
- _____

**United States Representative
 Congressional District No. 7**

partisan office
 vote for one

- Pramila Jayapal**
 (Prefers Democratic Party)
- Craig Keller**
 (Prefers Republican Party)
- _____

State

**Legislative District No. 36
 State Senator**

partisan office
 vote for one

- Reuven M. Carlyle**
 (Prefers Democratic Party)
- Bryan Simonson**
 (Prefers Libertarian Party)
- _____

**Legislative District No. 36
 Representative Position No. 1**

partisan office
 vote for one

- Noel Christina Frame**
 (Prefers Democratic Party)
- Sydney Gillman Wissel**
 (Prefers Libertarian Party)
- _____

**Legislative District No. 36
 Representative Position No. 2**

partisan office
 vote for one

- Gael Tarleton**
 (Prefers Democratic Party)
- Matt Dubin**
 (Prefers Libertarian Party)
- _____

County

Prosecuting Attorney

nonpartisan office
 vote for one

- Dan Satterberg**
- Daron Morris**
- _____

Assessor

nonpartisan office
 vote for one

- John Wilson**
- _____

Director of Elections

nonpartisan office
 vote for one

- Julie Wise**
- Mark Greene**
- _____

**Metropolitan King County
 Council District No. 4**

nonpartisan office
 vote for one

- Abigail Doerr**
- Jeanne Kohl-Welles**
- _____

Continue voting
 other side



State Supreme Court **City**

Justice Position No. 2
nonpartisan office
vote for one

Susan Owens

**Seattle Municipal Court
Judge Position No. 3**
nonpartisan office
vote for one

Adam Eisenberg

Justice Position No. 8
nonpartisan office
vote for one

Nathan Choi
 Steve Gonzalez

**Seattle Municipal Court
Judge Position No. 4**
nonpartisan office
vote for one

Anita M. Crawford-Willis

Justice Position No. 9
nonpartisan office
vote for one

Sheryl Gordon McCloud

**Seattle Municipal Court
Judge Position No. 5**
nonpartisan office
vote for one

Willie Gregory

**Court of Appeals, Division
No. 1, District No. 1**

Judge Position No. 4
short and full term
nonpartisan office
vote for one

Beth M. Andrus

**Seattle Municipal Court
Judge Position No. 6**
nonpartisan office
vote for one

Faye Chess

Judge Position No. 7
nonpartisan office
vote for one

Marlin Appelwick

**Seattle Municipal Court
Judge Position No. 7**
nonpartisan office
vote for one

Damon Shadid

District Court

**West Electoral District
Judge Position No. 1**
nonpartisan office
vote for one

Lisa A. Paglisotti

**West Electoral District
Judge Position No. 2**
nonpartisan office
vote for one

Mark C. Chow

**West Electoral District
Judge Position No. 3**
nonpartisan office
vote for one

Art Chapman

**West Electoral District
Judge Position No. 4**
nonpartisan office
vote for one

Gregg Hirakawa

**West Electoral District
Judge Position No. 5**
nonpartisan office
vote for one

Anne C. Harper

City

**Seattle Municipal Court
Judge Position No. 1**
nonpartisan office
vote for one

Ed McKenna

**Seattle Municipal Court
Judge Position No. 2**
nonpartisan office
vote for one

Andrea Chin

**City of Seattle
Proposition No. 1
Families, Education, Preschool, and
Promise Levy**

The City of Seattle's Proposition 1 concerns renewing and enhancing services to achieve equity in educational outcomes.

This proposition would replace two expiring levies and initially fund expanded early learning and preschool, college and K-12 education support, K-12 student health, and job readiness opportunities, as provided in Ordinance 125604. Consistent with RCW 84.55, it would increase regular property taxes for seven years. The 2019 tax increase, up to \$0.365/\$1,000 of assessed value, would be used to compute limitations for subsequent levies, with 1% annual increases. Qualifying seniors and others would be exempt under RCW 84.36.381.

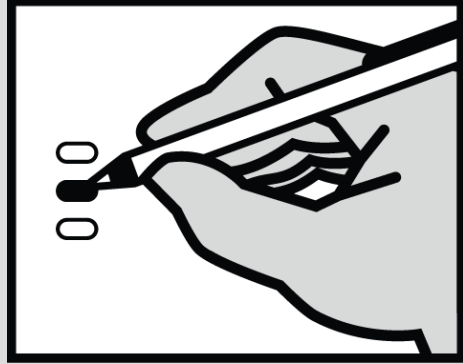
Should this levy be approved?

Yes
 No

Vote both sides of ballot

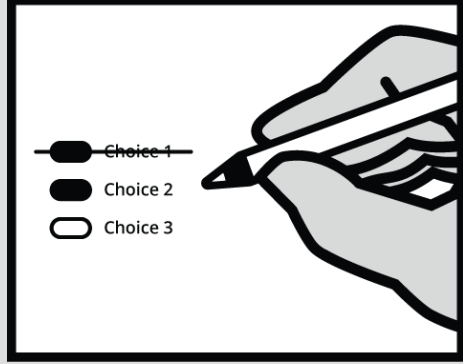
Instructions

How to vote



Completely fill in the oval next to your choice.

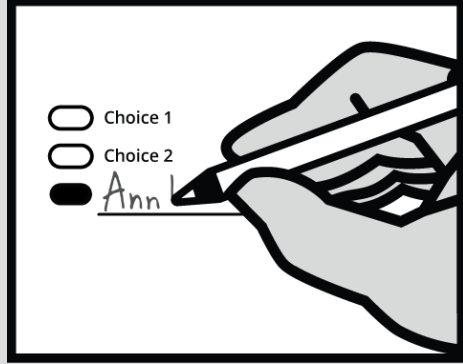
How to correct a mistake



To make a correction, draw a line through the entire choice.

You then have the option of making a different choice by completely filling in another oval.

Optional write-in



To add a new candidate, fill in the oval next to the write-in line and print the name on the write-in line.

State

Initiatives to the People

Initiative Measure No. 1631

Initiative Measure No. 1631 concerns pollution. This measure would charge pollution fees on sources of greenhouse gas pollutants and use the revenue to reduce pollution, promote clean energy, and address climate impacts, under oversight of a public board.

Should this measure be enacted into law?

- Yes
- No

Initiative Measure No. 1634

Initiative Measure No. 1634 concerns taxation of certain items intended for human consumption. This measure would prohibit new or increased local taxes, fees, or assessments on raw or processed foods or beverages (with exceptions), or ingredients thereof, unless effective by January 15, 2018, or generally applicable.

Should this measure be enacted into law?

- Yes
- No

Initiative Measure No. 1639

Initiative Measure No. 1639 concerns firearms. This measure would require increased background checks, training, age limitations, and waiting periods for sales or delivery of semiautomatic assault rifles; criminalize noncompliant storage upon unauthorized use; allow fees; and enact other provisions.

Should this measure be enacted into law?

- Yes
- No

Initiative Measure No. 940

Initiative Measure No. 940 concerns law enforcement. This measure would require law enforcement to receive violence de-escalation, mental-health, and first-aid training, and provide first-aid; and change standards for use of deadly force, adding a "good faith" standard and independent investigation.

Should this measure be enacted into law?

- Yes
- No

Advisory Votes

**Advisory Vote No. 19
 Engrossed Second Substitute Senate Bill 6269**

The legislature expanded, without a vote of the people, the oil spill response and administration taxes to crude oil or petroleum products received by pipeline, costing \$13,000,000 over ten years for government spending.

This tax increase should be:

- Repealed
- Maintained

READ: Each candidate for partisan office may state a political party that he or she prefers. A candidate's preference does not imply that the candidate is nominated or endorsed by the party, or that the party approves of or associates with that candidate.

Federal

United States Senator
 partisan office
 vote for one

- Maria Cantwell**
 (Prefers Democratic Party)
- Susan Hutchison**
 (Prefers Republican Party)
- _____

**United States Representative
 Congressional District No. 1**
 partisan office
 vote for one

- Suzan DelBene**
 (Prefers Democratic Party)
- Jeffrey Beeler**
 (Prefers Republican Party)
- _____

State

**Legislative District No. 48
 State Senator**
 partisan office
 vote for one

- Patty Kuderer**
 (Prefers Democratic Party)
- Rodney Tom**
 (Prefers Democratic Party)
- _____

**Legislative District No. 48
 Representative Position No. 1**
 partisan office
 vote for one

- Vandana Slatter**
 (Prefers Democratic Party)
- _____

**Legislative District No. 48
 Representative Position No. 2**
 partisan office
 vote for one

- Amy Walen**
 (Prefers Democratic Party)
- Cindi Bright**
 (Prefers Democratic Party)
- _____

County

Prosecuting Attorney
 nonpartisan office
 vote for one

- Dan Satterberg**
- Daron Morris**
- _____

Assessor
 nonpartisan office
 vote for one

- John Wilson**
- _____

Director of Elections
 nonpartisan office
 vote for one

- Julie Wise**
- Mark Greene**
- _____

**Metropolitan King County
 Council District No. 6**
 nonpartisan office
 vote for one

- Bill Hirt**
- Claudia Balducci**
- _____

Continue voting
 other side

State Supreme Court **District Court**

Justice Position No. 2
nonpartisan office
vote for one

Susan Owens

Justice Position No. 8
nonpartisan office
vote for one

Nathan Choi

Steve Gonzalez

Justice Position No. 9
nonpartisan office
vote for one

Sheryl Gordon McCloud

Court of Appeals, Division No. 1, District No. 1

Judge Position No. 4
short and full term
nonpartisan office
vote for one

Beth M. Andrus

Judge Position No. 7
nonpartisan office
vote for one

Marlin Appelwick

District Court

**Northeast Electoral District
Judge Position No. 1**
nonpartisan office
vote for one

Marcus Naylor

Joshua Schaer

**Northeast Electoral District
Judge Position No. 2**
nonpartisan office
vote for one

Ketu Shah

**Northeast Electoral District
Judge Position No. 3**
nonpartisan office
vote for one

Lisa O'Toole

**Northeast Electoral District
Judge Position No. 4**
nonpartisan office
vote for one

Peter L. Nault

**Northeast Electoral District
Judge Position No. 5**
nonpartisan office
vote for one

David A. Steiner

**Northeast Electoral District
Judge Position No. 6**
nonpartisan office
vote for one

Michael Finkle

**Northeast Electoral District
Judge Position No. 7**
nonpartisan office
vote for one

Donna Tucker

Vote both sides of ballot