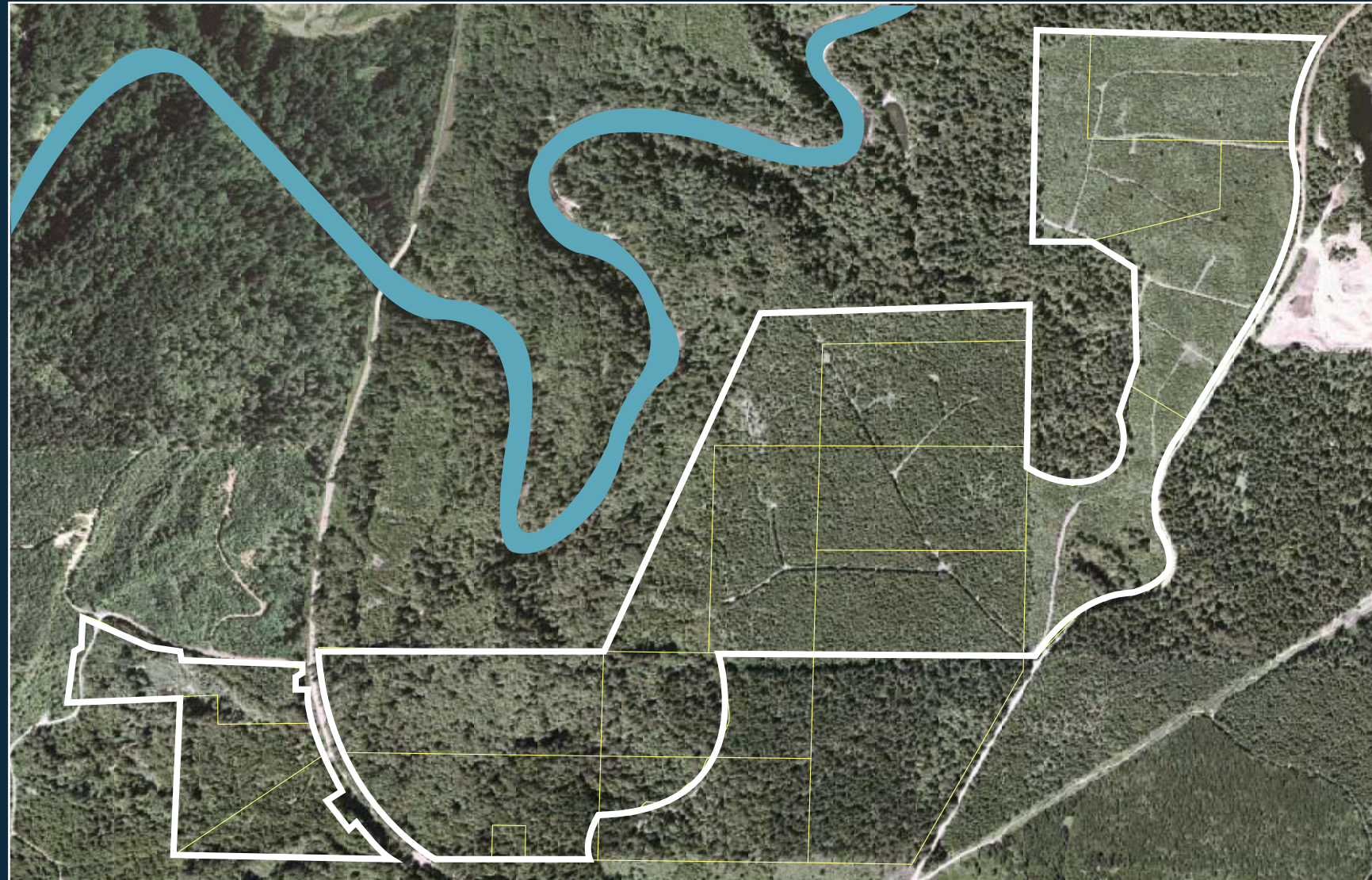


Icy Creek : Aerial



- Located along the southern bank of the Green River
- Currently undeveloped
- Several preliminary plats and short plats (21 lots) have been approved for the property

ZOOMED
AERIAL

PROPERTY
AERIAL

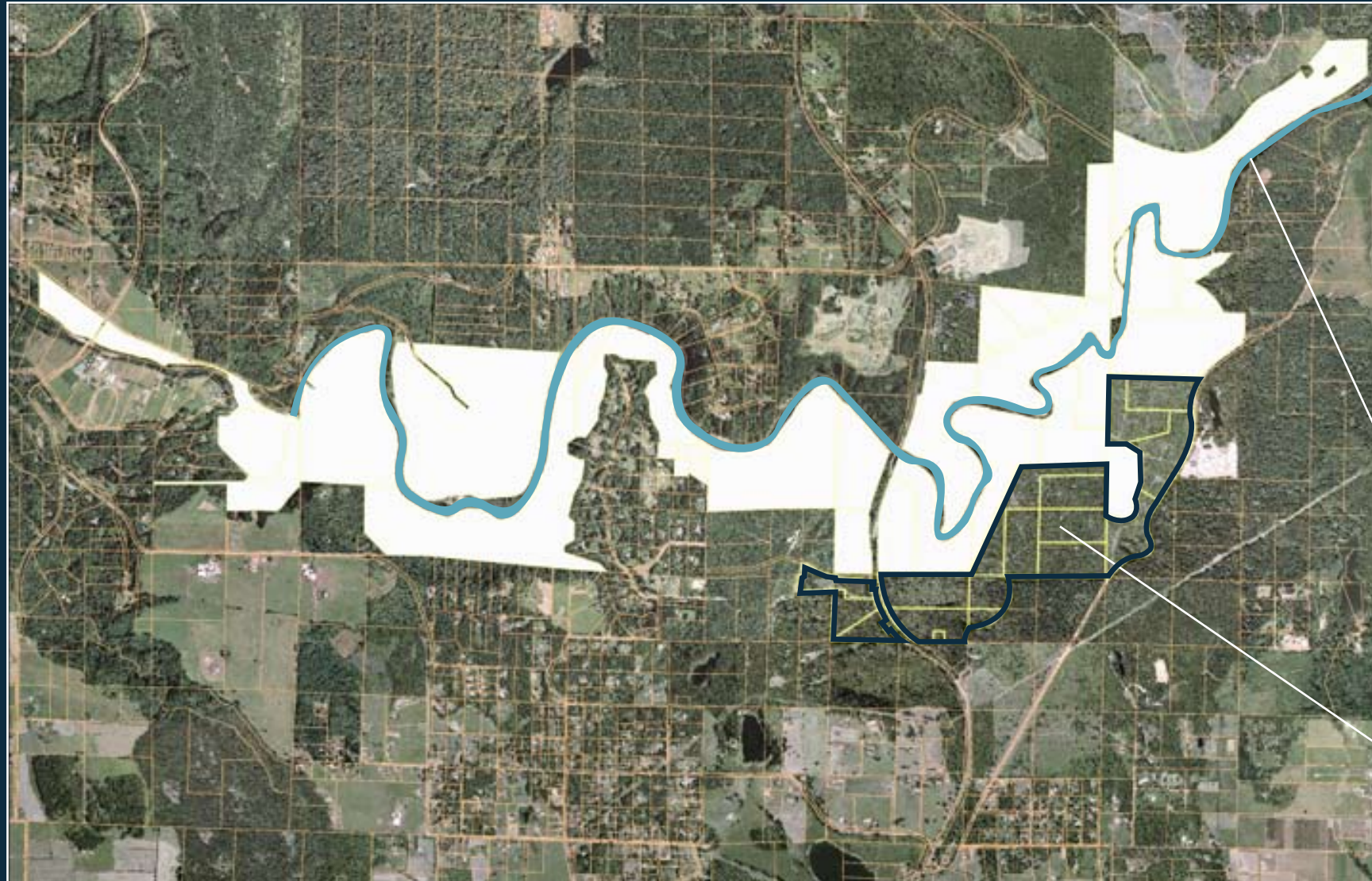
PHOTO 1

PHOTO 2

PHOTO 3

BENEFITS

Icy Creek : Aerial Property



- The property is the only privately-held land for approximately 2.5 contiguous miles along both sides of the Green River

Green River

Icy Creek Property



ZOOMED
AERIAL

PROPERTY
AERIAL

PHOTO 1

PHOTO 2

PHOTO 3

BENEFITS



- In 2003/2004, this property was identified by the Conservation Futures Citizens Committee for purchase by King County
- Funds were allocated for the purchase, but King County was unable to convince the owner to sell the property

Photos by: Middle Green River Coalition (mgrc.org)

ZOOMED
AERIAL

PROPERTY
AERIAL

PHOTO 1

PHOTO 2

PHOTO 3

BENEFITS



- **King County will more easily be able to maintain the public lands surrounding the Green River through ownership of the “missing link,” the Icy Creek property**

Photos by: Middle Green River Coalition (mgrc.org)

ZOOMED
AERIAL

PROPERTY
AERIAL

PHOTO 1

PHOTO 2

PHOTO 3

BENEFITS

Current Photos



- A local preservationist group, the Middle Green River Coalition, is lobbying strongly for this property to be publicly-owned and preserved as open space

Photos by: Middle Green River Coalition (mgrc.org)

ZOOMED
AERIAL

PROPERTY
AERIAL

PHOTO 1

PHOTO 2

PHOTO 3

BENEFITS

- **Protecting Conservation and Critical Habitat Land**
- **Last Opportunity to Preclude Development and Obtain Public Ownership**
- **Protect Water Quality**
- **Provides Last Opportunity to have Contiguous Public Ownership**

ZOOMED
AERIAL

PROPERTY
AERIAL

PHOTO 1

PHOTO 2

PHOTO 3

BENEFITS