

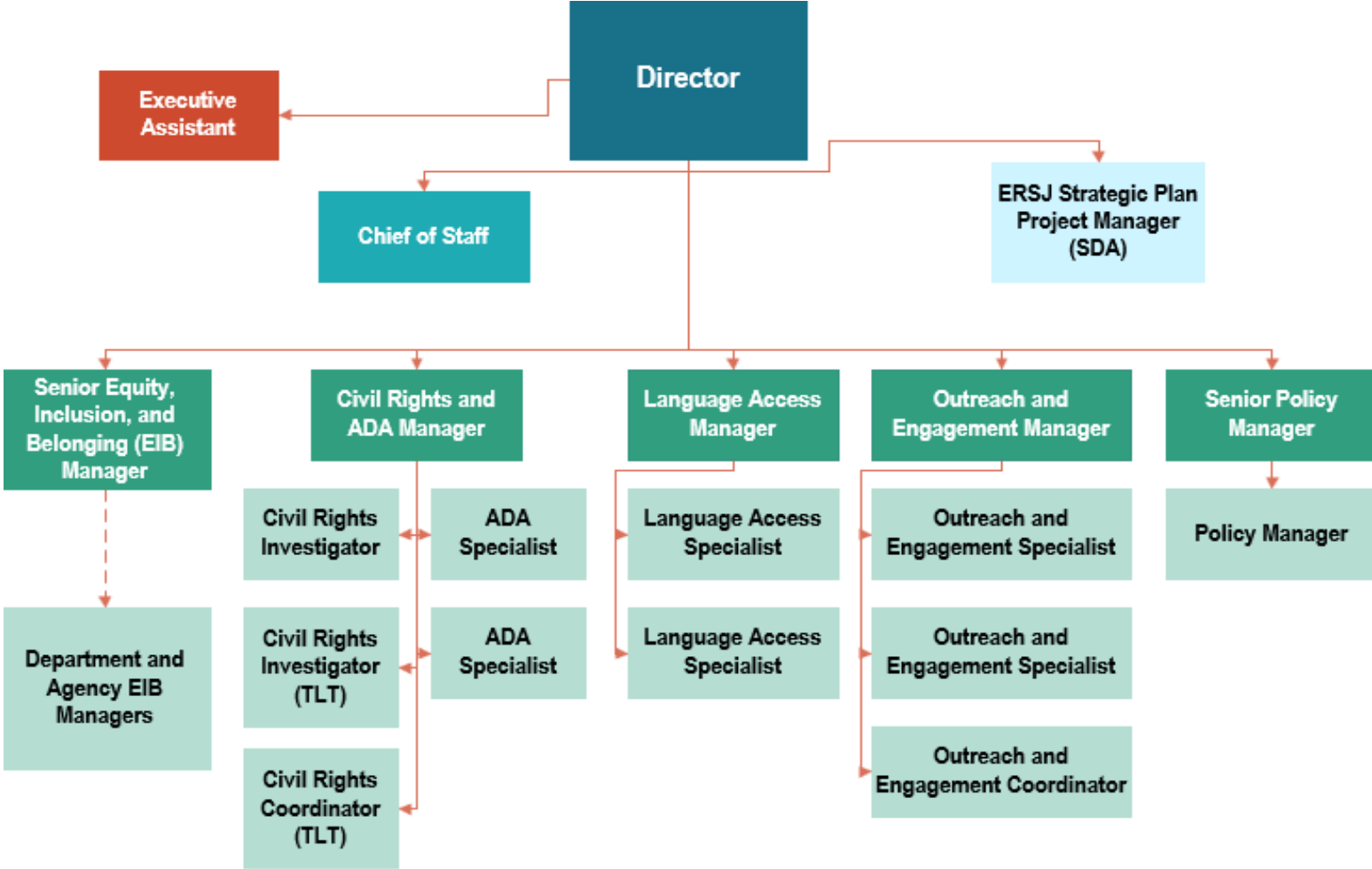
King County Executive Office of Equity and Racial and Social Justice

September 2024

Legislatively Defined Functions and Responsibilities

- Language Access Program
- Immigrant and Refugee Commission
- Civil Rights Program
- Rev. Dr. Martin Luther King, Jr. Annual Celebration

OERSJ Organizational Chart



Advancing ERSJ Outcomes with Community

- Racism as a Public Health Crisis grants program
- Coalition Against Hate and Bias
- Commissions and Committees
 - Immigrant and Refugee Commission
 - Human and Civil Rights Commission (launch)
 - 504/ADA Committee (relaunch 2025)

Current Focus



Intake Systems



Civil Rights Investigations



Standardized Training/Resources for EIB Managers



Community Compensation



Equity Impact Review (EIR) Toolkit Refresh

ERSJ Strategic Plan Policy & Goal Area Reviews



Note: Project stages overlap and are more iterative than noted above



Disability Equity

Relaunching	Implementing	Growing
Relaunching the 504/ADA Advisory Committee (2025)	Implementing the Disability Equity Action Plan	Growing an ADA Community of Practice and related services

2025 Work Plan

- Finalize 2025-2031 Strategic Plan
- Launch the Human and Civil Rights Commission
- Staff King County's participation in statewide Hate Crimes Hotline
- Relaunch the 504/ADA Advisory Committee
- Convene Regional Leadership Meetings
- Create Community One-Pagers
- Develop Online Community Calendar
- Host American History Traveling Museum: The Unspoken Truths