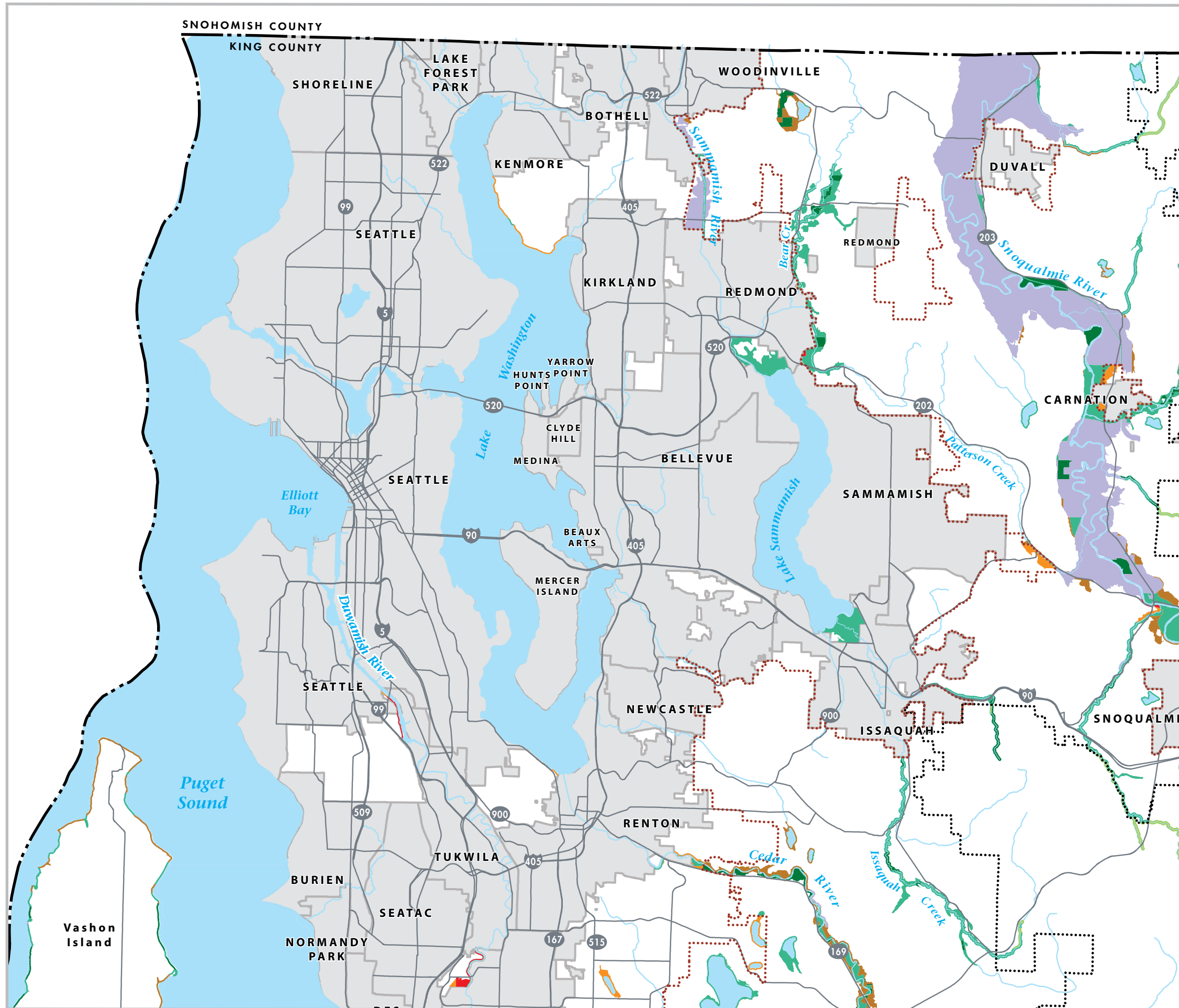


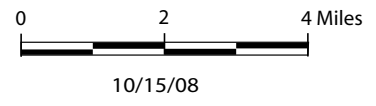
DRAFT

Map S-3a Shoreline Designations Northwest King County, Washington



- Designations**
- Natural Shoreline
 - Forestry Shoreline
 - Resource Shoreline
 - Conservancy Shoreline
 - Rural Shoreline
 - Residential Shoreline
 - High Intensity Shoreline

- Urban Growth Area Line
- Forest Production District Boundary
- Other Major Streams
- Major Road
- County Boundary
- Incorporated Areas
- Other Water Bodies



Produced by:
DNRP/WLRD
GIS, Visual Communications
& Web Units
File Name:
0810_SMPdesig1NW.ai LPRE

Data Sources:
Standard King County datasets "plibrary.PLANNING.URBAN_GROWTH_line" (UGA - 01/23/2007), "plibrary.NATRES.FORPDDST_line" (Forest Production District, 02/25/2006). Designations from King County dataset "designations.shp created 8/15/07.

Notes:
1. The boundaries of the aquatic areas designation are not shown on this map.
2. Please refer to www.metrokc.gov/shorelines for a full description of the analysis methodology and interactive mapping tools that allow users to view specified shoreline areas in more detail.

The information included on this map has been compiled by staff from a variety of sources and is subject to change without notice. This map has been developed for planning purposes only. King County makes no representations or warranties, express or implied, as to accuracy, completeness, timeliness, or rights to the use of such information. King County shall not be liable for any general, special, indirect, incidental, or consequential damages including, but not limited to, lost revenues or lost profits resulting from the use or misuse of the information contained on this map. Any sale of this map or information on this map is prohibited except by written permission of King County.