



King County

Regional Transit Committee

STAFF REPORT

AGENDA ITEM: 8

DATE: June 27, 2012

PROPOSED MOTION NO. 2012-0129

PREPARED BY: Paul Carlson

SUBJECT

Proposed Motion 2012-0129 accepts the King County Metro Transit 2011 Service Guidelines Report, dated March 2012.

SUMMARY

The Report – On May 16, the RTC extensively reviewed and discussed the 2011 Service Guidelines Report, dated March 2012. The Report was submitted as required by Section 5 of Ordinance 17143, approving the Strategic Plan for Public Transportation 2011-2021 (Strategic Plan) and the King County Metro Service Guidelines (Service Guidelines).

The 2011 Report is available on line at the following link:

<http://mkcclegisearch.kingcounty.gov/View.ashx?M=F&ID=1876224&GUID=86CDB92C-725F-4844-B9E1-ED005C0FCADF>

Proposed Motion 2012-0129 – this proposed motion accepts the 2011 Report. It was introduced on April 9, 2012; the Committee has 120 days under the King County Charter to act on it. Proposed Motion 2012-00129 and the Executive's transmittal letter are attachments 1 and 2 to this staff report.

On May 16, Councilmember Allen had some specific comments about additional information and these were later submitted to the Transit Division by City of Redmond staff. The response, provided by letter to Redmond staff, is Attachment 3.

It would be appropriate for the RTC to approve Proposed Motion 2012-0129 at today's meeting. Attachment 3 includes a correction to a map in the Service Guidelines Report, and the Committee may want to amend the Report to insert the corrected map. Staff will be prepared to discuss options for making this technical correction at the Committee meeting.

ATTENDING:

Victor Obeso, Manager of Service Development, King County Transit Division
Christina O’Claire, Supervisor of Strategic Planning and Analysis, King County Transit Division

ATTACHMENT:

1. Proposed Motion 2012-0129
2. Executive’s Transmittal Letter
3. Victor Obeso Letter to Chester Knapp



KING COUNTY
Signature Report

1200 King County Courthouse
516 Third Avenue
Seattle, WA 98104

June 20, 2012

Motion

Proposed No. 2012-0129.1

Sponsors Dunn

1 A MOTION relating to the King County Metro Strategic
2 Plan for Public Transportation 2011-2021 and King County
3 Metro Service Guidelines and accepting the King County
4 Metro Transit 2011 Service Guidelines Report.

5 WHEREAS, the council adopted the King County Metro Strategic Plan for Public
6 Transportation 2011-2021 ("strategic plan") and the King County Metro Service
7 Guidelines ("service guidelines") in July 2011, and

8 WHEREAS, the strategic plan and service guidelines were to follow the
9 recommendations of the regional transit task force regarding the policy framework for the
10 Metro transit system, and

11 WHEREAS, the regional transit task force recommended that the strategic plan
12 and service guidelines focus on transparency and clarity, cost control and productivity,
13 and

14 WHEREAS, the regional transit task force further recommended that the policy
15 guidance for making service reductions and service growth decisions be based on the
16 following three priorities:

- 17 1. Emphasize productivity due to its linkage to economic development, land use,
18 financial stability and environmental sustainability;

19 2. Ensure social equity; and

20 3. Provide geographic value throughout the county, and

21 WHEREAS, Ordinance 17143, Section 5, adopting the strategic plan and service
22 guidelines directs that an annual service guidelines report of Metro's transit system,
23 beginning with a baseline report in 2012, be transmitted by the executive to the council
24 for acceptance by motion, and

25 WHEREAS, Ordinance 17143, Section 5.B, specifies that the annual service
26 guidelines report also be transmitted by March 31 of each year to the regional transit
27 committee for consideration, and

28 WHEREAS, Ordinance 17143, Section 5A, specifies that the annual service
29 guidelines report include:

30 1. The corridors analyzed to determine the Metro All-Day and Peak Network
31 with a summary of resulting scores and assigned service levels as determined by the
32 service guidelines;

33 2. The results of the analysis including a list of overserved and underserved
34 transit corridors and the estimated number of service hours, as either an increase or
35 decrease, necessary to meet each underserved corridor's needs;

36 3. The performance of transit services by route and any changes in the service
37 guidelines thresholds since the previous reporting period, using the performance
38 measures identified in chapter III of the strategic plan and in the service guidelines;

39 4. A list of transit service changes made to routes and corridors of the network
40 since the last reporting period;

41 5. Network and rider connectivity associated with transit services delivered by
42 other providers; and

43 6. A list of potential changes, if any, to the strategic plan and service guidelines
44 to better meet their policy intent, and

45 WHEREAS, King County Metro staff has compiled the required information and
46 the executive has transmitted the baseline service guidelines report set forth as
47 Attachment A to this motion to the council and to the regional transit committee;

48 NOW, THEREFORE, BE IT MOVED by the Council of King County:

49 The King County council hereby accepts the attached King County Metro Transit
50 2011 Service Guidelines Report.
51

KING COUNTY COUNCIL
KING COUNTY, WASHINGTON

Larry Gossett, Chair

ATTEST:

Anne Noris, Clerk of the Council

APPROVED this ____ day of _____, _____.

Dow Constantine, County Executive

Attachments: A. 2011 Service Guidelines Report

ATTACHMENT 2

March 28, 2012

The Honorable Larry Gossett
Chair, King County Council
Room 1200
C O U R T H O U S E

Dear Councilmember Gossett,

I am pleased to submit the enclosed motion for the King County Council to accept the *King County Metro Transit 2011 Service Guidelines Report*.

Section 5 of Ordinance 17143 adopting King County Metro Transit's (Metro) *Strategic Plan for Public Transportation 2011-2021 (Strategic Plan)* requires that an annual service guidelines report of Metro's transit system be transmitted to the Council for acceptance by motion, beginning with a baseline report in 2012. Ordinance 17143 also requires that the annual service report be transmitted by March 31 of each year to the Regional Transit Committee for consideration.

The service guidelines report is an important part of Metro's commitment to transparency that is incorporated into the Strategic Plan. The report also provides a baseline for future comparisons that will allow Metro to show progress towards a transit system that balances service productivity, geographic value and social equity. As directed by Section 5(A) of Ordinance 17143, the report summarizes the following:

1. The corridors analyzed to determine the Metro All-Day and Peak Network with a summary of resulting scores and assigned service levels as determined by the King County Metro Service Guidelines (Service Guidelines);
2. The results of the analysis including a list of over-served and under-served transit corridors and the estimated number of service hours, as either an increase or decrease, necessary to meet each underserved corridor's needs;
3. The performance of transit services by route and any changes in the Service Guidelines thresholds since the previous reporting period, using the performance measures identified in Chapter III of the Strategic Plan and in the Service Guidelines;
4. A list of transit service changes made to routes and corridors of the network since the last reporting period;
5. Network and rider connectivity associated with transit services delivered by other providers; and

The Honorable Larry Gossett

March 28, 2012

Page 2

6. A list of potential changes, if any, to the Strategic Plan and Service Guidelines to better meet their policy intent.

The service guidelines report will help the County show progress toward the goals of the *King County Strategic Plan* with particular focus on its fair and just principle in the development of service targets that systematically prioritize social equity along with productivity and geographic value. The eight County goals of safety, human potential, economic growth, environmental sustainability, service excellence, financial stewardship, public engagement and transparency and quality workforce are mirrored in Metro's Strategic Plan for Public Transportation. The guidelines help Metro move toward those goals as it strives to operate efficient and effective services that are equitable and provide value throughout King County.

It is estimated that this report required 480 staff hours to produce, costing \$27,500. The estimated printing cost for this report is \$550.

Thank you for your consideration of this motion. The service guidelines report will help King County residents understand how Metro is making the best use of the County's transit resources to deliver high-quality services that get people where they want to go.

If you have any questions, please contact Christina O'Claire, Long Range Planning and Performance Management Supervisor in Service Development, at 206-255-1776, or via e-mail at christina.oclaire@kingcounty.gov.

Sincerely,

Dow Constantine
King County Executive

Enclosures

cc: King County Councilmembers
ATTN: Cindy Domingo, Acting Chief of Staff
Mark Melroy, Senior Principal Legislative Analyst, BFM Committee
Anne Noris, Clerk of the Council
Fred Jarrett, Deputy County Executive, King County Executive Office
Carrie S. Cihak, Chief Advisor Policy and Strategic Initiatives, King County Executive Office
Dwight Dively, Director, Office of Performance, Strategy and Budget
Harold S. Taniguchi, Director, Department of Transportation (DOT)
Kevin Desmond, General Manager, Metro Transit Division, DOT
Jim Jacobson, Deputy General Manager, Metro Transit Division, DOT
Victor Obeso, Manager, Service Development, Metro Transit Division, DOT
Chris O'Claire, Supervisor, Long Range Planning and Performance Management, Metro Transit Division, DOT



King County

Department of Transportation

Metro Transit Division

Service Development

201 S. Jackson Street

KSC-TR-0415

Seattle, WA 98104-3856

June 15, 2012

Chester Knapp, Senior Planner
City of Redmond
PO Box 97010
Redmond, WA 98073-9710

Dear Mr. Knapp:

Thank you for your May 15, 2012, e-mail to Christina O'Claire, King County Metro (Metro) Strategic Planning and Analysis Supervisor, in which you requested further clarification of the King County Metro Transit 2011 Service Guidelines Report (Service Guidelines Report).

In response to your request, attached you will find:

- A list of overserved corridors that accompany Figure 4 on page 15 of the Service Guidelines Report.
- A list and map of the corridors that received points for serving low-income census tracts.
- A list and map of the corridors that received points for serving minority census tracts.
- A list and map of the corridors that received points for serving as the primary connection between activity centers and or between regional growth centers.

While developing the maps you requested, it was discovered that the low-income map on page A-2 of the Service Guideline Report was developed using out-of-date data. The map in the report showed a five-year, rolling average from the American Community Survey (ACS) for the years 2005-2009. The corridor analysis, however, was done using ACS data for the years 2006-2010.

The differences between the two maps can occur for either or both of the following two reasons:

1. A tract has a different percent of low-income residents than the previous year.
2. The percent of low-income residents in the county as a whole has changed.

This correction only affects the map, not the data used to complete the corridor analysis. We have attached a corrected low-income/minority map to replace the map on page A-2. The corrected map is also used as the background for low-income/minority corridors maps.

Chester Knapp
June 15, 2012
Page 2

Thank you again for your request for further clarification. If you have further questions or comments, please contact Ms. O'Claire at 206-263-4753 or via email at christina.oclaire@kingcounty.gov.

Sincerely,



Victor Obeso
Manager
Service Development

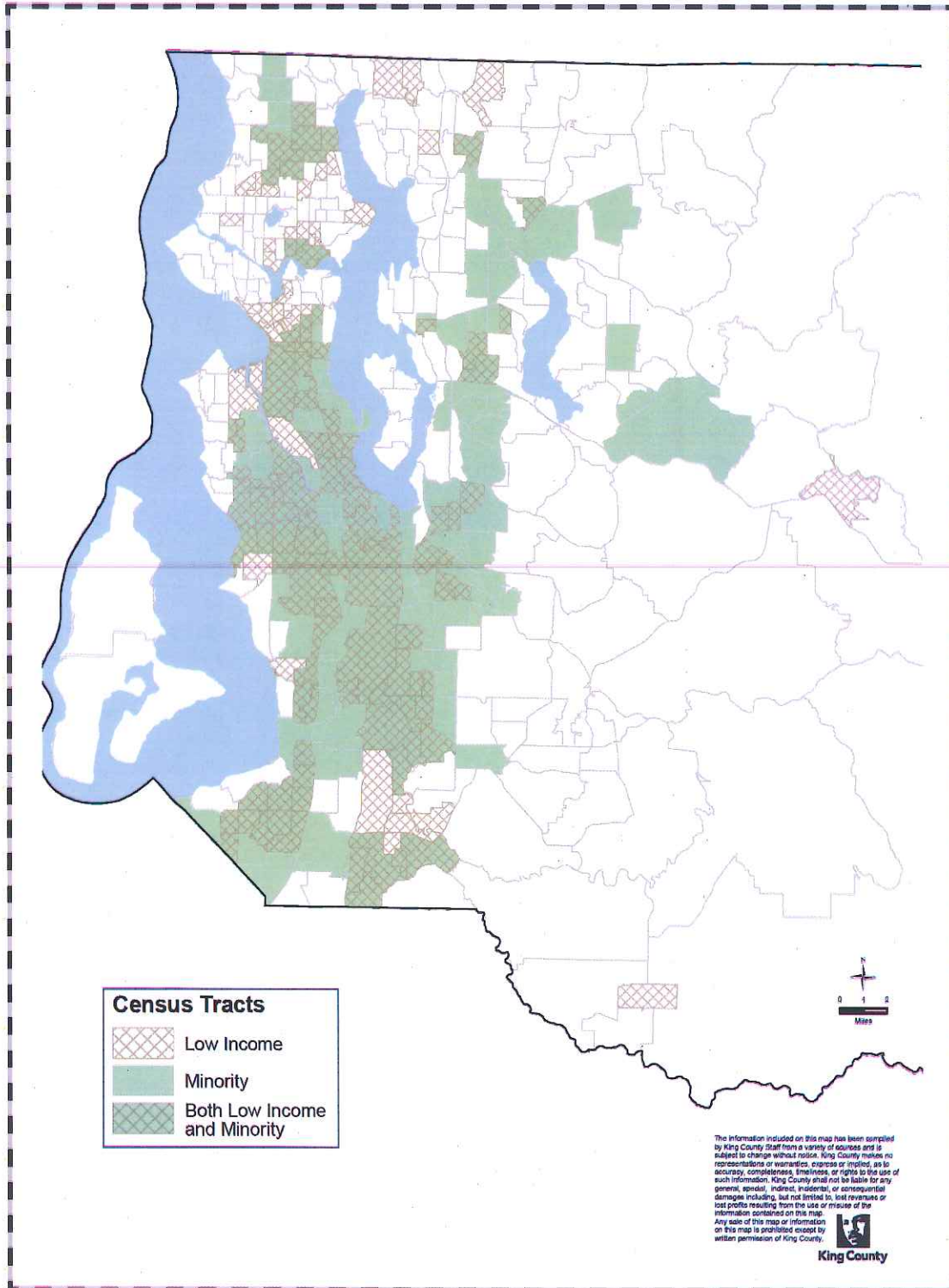
Attachment

cc: Christina O'Claire, Supervisor, Strategic Planning and Analysis, Service Development,
Metro Transit Division, Department of Transportation

Corrected Low Income/Minority Map – to replace map on page A-2 in Service Guidelines Report

APPENDIX A:

King County Low Income and Minority Census Tracts (2010 Geography)



Attachment A

Response to Redmond’s Request of More Clarification Regarding Service Guidelines Report

A list of the Overserved Corridors to accompany Figure 4 on page 15.

Over-Served Corridors				
1	Admiral District	Southcenter	California Ave SW, Military Rd, TIBS	128
2	Alki	Seattle CBD	Admiral Way	56
4	Auburn/GRCC	Federal Way	15th St SW, Lea Hill Rd	181
7	Avondale	Kirkland	NE 85th St, NE Redmond Wy, Avondale Wy NE	248
8	Ballard	U. District	Green Lake, Greenwood	48 N
14	Bellevue	Eastgate	Lake Hills Connector	271
27	Eastgate	Bellevue	Newport Wy , S. Bellevue, Beaux Arts	222
29	Eastgate	Overlake	Phantom Lake	926
36	Fremont	Broadview	8th Av NW, 3rd Av NW	28
39	High Point	Seattle CBD	35th Ave SW	21
40	Issaquah	Eastgate	Newport Way	271
42	Issaquah	North Bend	Fall City, Snoqualmie	209
43	Kenmore	Kirkland	Juanita	234
44	Kenmore	Shoreline	Lake Forest Park, Aurora Village TC	331
46	Kenmore	Totem Lake	Finn Hill, Juanita	935
53	Kirkland	Bellevue	South Kirkland	230 W
54	Kirkland	Factoria	Overlake, Crossroads, Eastgate	245
58	Laurelhurst	U. District	NE 45th St	25
62	Mercer Island	S Mercer Island	Island Crest Way	204
71	Othello Station	Columbia City	Seward Park	39
72	Overlake	Bellevue	Bell-Red Road	233
73	Overlake	Bellevue	Sammamish Viewpoint, Northup Way	249
80	Redmond	Eastgate	148th Ave, Crossroads, Bellevue College	221
92	Sand Point	U. District	NE 55th St	30
96	Shoreline CC	Greenwood	Greenwood Av N	5
97	Totem Lake	Seattle CBD	Kirkland, SR-520	255
98	Totem Lake	Kirkland	Kingsgate	236
108	UW Bothell	Redmond	Woodinville, Cottage Lake	251
109	UW Bothell/CCC	Kirkland	132nd Ave NE, Lk Wash Voch Tech	238
110	Wedgwood	Cowen Park	View Ridge, NE 65th St	71
113	White Center	Seattle CBD	Highland Park, 4th Ave S	23

Attachment A

Response to Redmond’s Request of More Clarification Regarding Service Guidelines Report

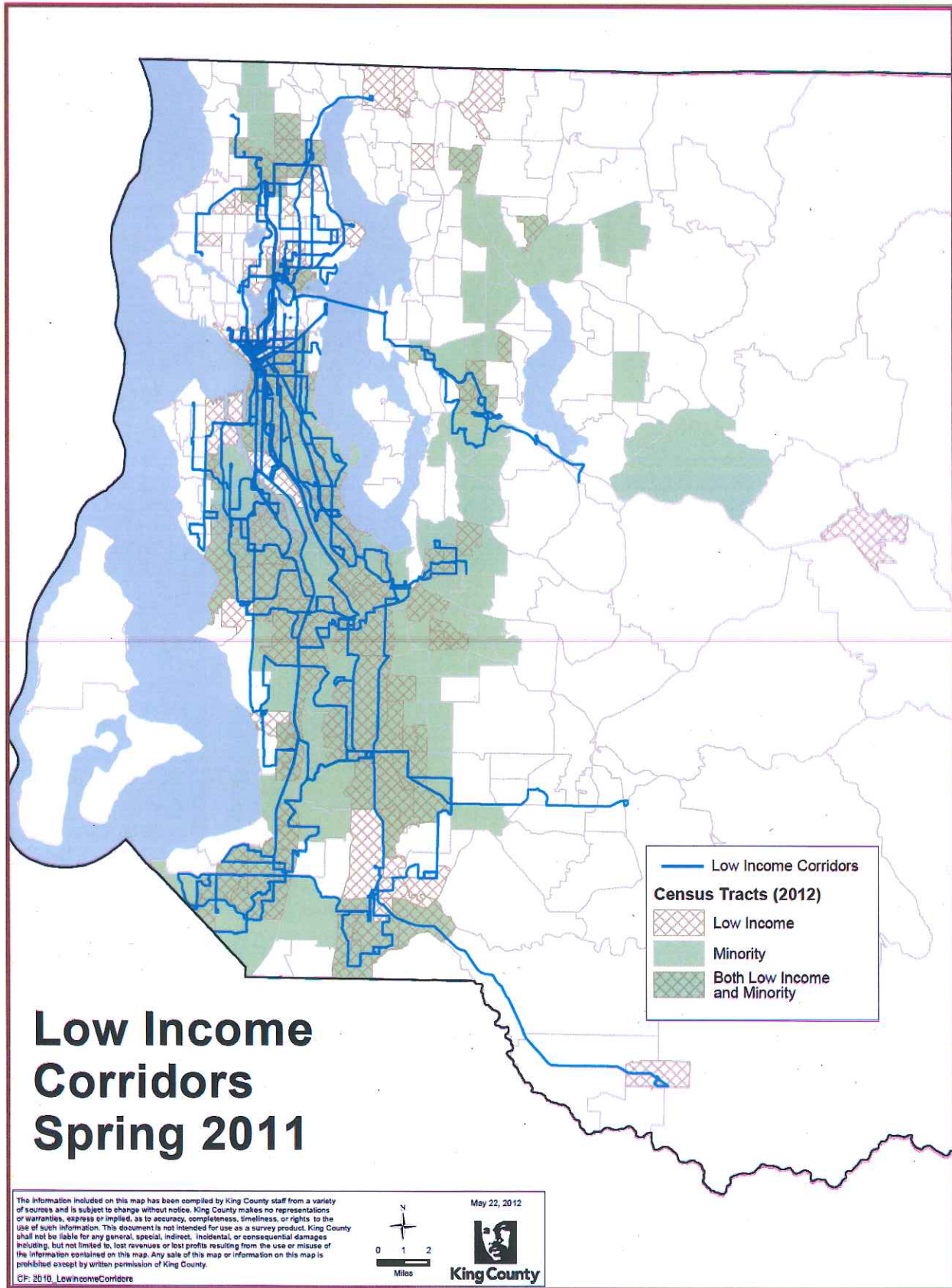
A list and map of the corridors that receive points for serving low income census tracts, and a list and map of the corridors that receive points for serving minority census tracts, to accompany Appendix A, page A-2.

Low Income Corridors				
1	Admiral District	Southcenter	California Ave SW, Military Rd, TIBS	128
3	Auburn	Burien	Kent, SeaTac	180
4	Auburn/GRCC	Federal Way	15th St SW, Lea Hill Rd	181
9	Ballard	Lake City	Holman Road, Northgate	75
13	Beacon Hill	Seattle CBD	Beacon Ave	36
14	Bellevue	Eastgate	Lake Hills Connector	271
17	Burien	Seattle CBD	Delridge, Ambaum	120
18	Burien	Seattle CBD	1st Ave S, South Park, Airport Wy	131 TB
19	Burien	Seattle CBD	Des Moines Mem Dr, South Park	132 TB
20	Capitol Hill	White Center	South Park, Georgetown, Beacon Hill, First Hill	60
21	Capitol Hill	Seattle CBD	15th Ave E	10
22	Capitol Hill	Seattle CBD	Madison St	12
23	Central District	Seattle CBD	E Jefferson St	3STB
25	Cowen Park	Seattle CBD	University Way, I-5	73 TB EX
28	Eastgate	Bellevue	Somerset, Factoria, Woodridge	246
30	Enumclaw	Auburn	Auburn Wy S, SR 164	186
32	Federal Way	SeaTac	SR-99	A
33	Federal Way	Kent	Military Road	183
35	Fremont	U. District	N 40th St	30/31
37	Green River CC	Kent	132nd Ave SE	164
39	High Point	Seattle CBD	35th Ave SW	21
40	Issaquah	Eastgate	Newport Way	271
45	Kenmore	U. District	Lake Forest Park, Lake City	372 TB
48	Kent	Burien	Kent-DM Rd, S. 240th St, 1st Av S	131/166
49	Kent	Maple Valley	Kent-Kangley Road	168
51	Kent	Seattle CBD	Tukwila	150
52	Kent	Renton	84th Av S, Lind Av SW	153
55	Lake City	Seattle CBD	NE 125th St, Northgate, I-5	41
56	Lake City	U. District	Lake City, Sand Point	75
57	Lake City	U. District	35 th Ave NE	65
58	Laurelhurst	U. District	NE 45 th St	25
59	Madison Park	Seattle CBD	Madison St	11
60	Madrona	Seattle CBD	Union St	2 S
63	Mirror Lake	Federal Way	S 312 th St	901
64	Mount Baker	Seattle CBD	31st Av S, S Jackson St	14S
66	Mt Baker	U. District	23rd Ave E	48 S
67	NE Tacoma	Federal Way	SW 356 th St, 9 th Ave S	182
69	Northgate	Seattle CBD	Green Lake, Wallingford	16
70	Northgate	U. District	Roosevelt Way NE, NE 75 th St	68
71	Othello Station	Columbia City	Seward Park	39
74	Pacific	Auburn	Algona	917
77	Rainier Beach	Seattle CBD	Rainier Ave	7 TB

Attachment A

Response to Redmond's Request of More Clarification Regarding Service Guidelines Report

Low Income Corridors (Continued)				
78	Rainier Beach	Seattle Center	MLK Jr Wy, E John St, Denny Way	8
79	Rainier Beach	Capitol Hill	Rainier Ave	9
83	Renton	Burien	S 154th St	F
85	Renton	Rainier Beach	West Hill, Rainier View	107
86	Renton	Seattle CBD	Skyway, S. Beacon Hill	106
87	Renton	Renton Highlands	NE 4th St, Union Ave NE	105
89	Renton Highlands	Renton	NE 7 th St, Edmonds Av NE	908
92	Sand Point	U. District	NE 55 th St	30
94	Shoreline CC	Northgate	N 130th St, Meridian Av N	345
99	Tukwila	Seattle CBD	Pacific Hwy S, 4th Ave S	124
100	Tukwila	Des Moines	McMicken Heights, Sea-Tac	156
102	Twin Lakes	Federal Way	SW Campus Dr, 1 st Ave S	903
103	Twin Lakes	Federal Way	S 320 th St	187
104	U. District	Seattle CBD	Eastlake, Fairview	70
105	U. District	Seattle CBD	Broadway	49
106	U. District	Bellevue	SR-520	271
107	U. District	Seattle CBD	Lakeview	25
110	Wedgwood	Cowen Park	View Ridge, NE 65 th St	71
113	White Center	Seattle CBD	Highland Park, 4th Ave S	23



Attachment A

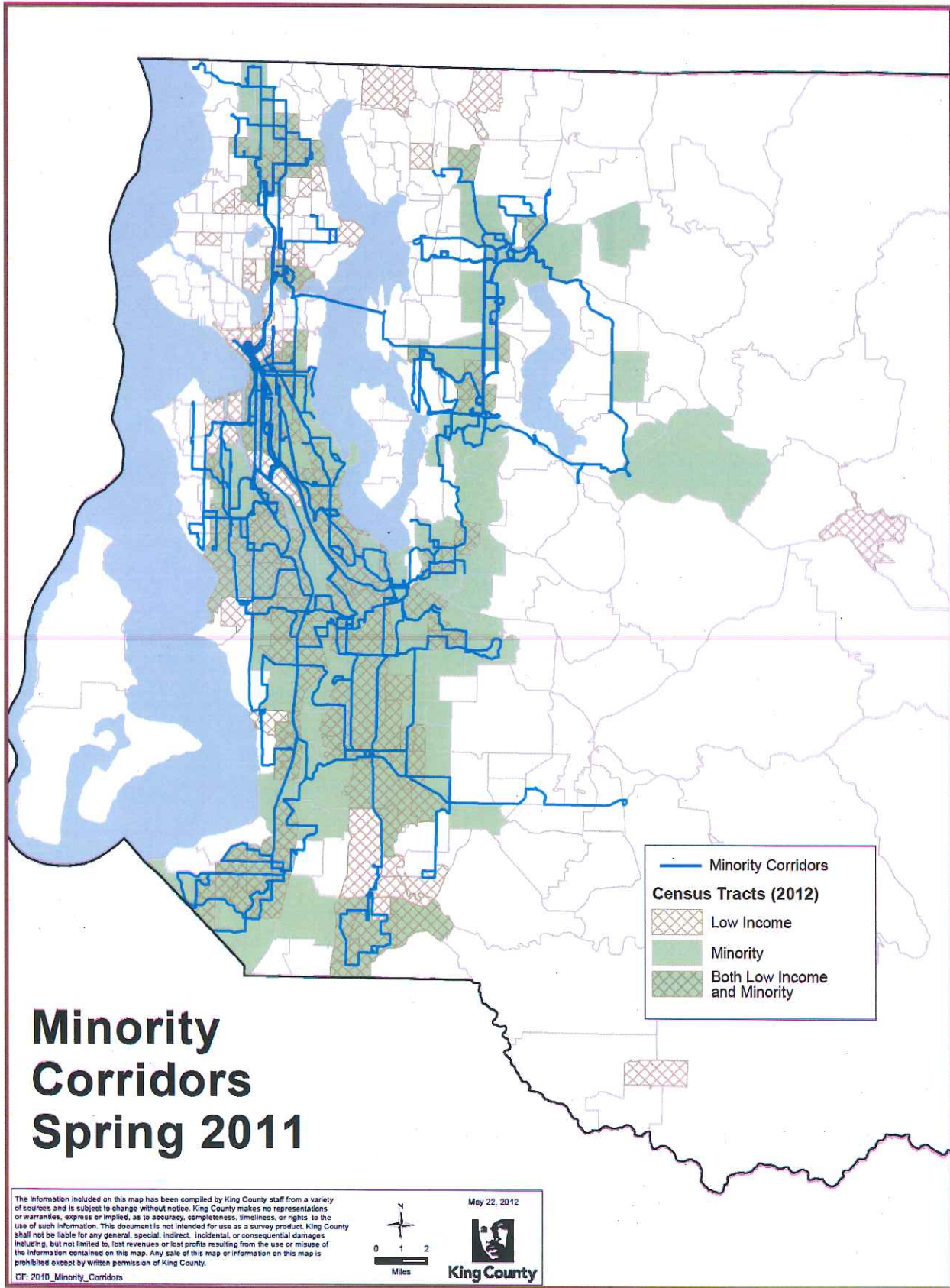
Response to Redmond’s Request of More Clarification Regarding Service Guidelines Report

Minority Corridors				
1	Admiral District	Southcenter	California Ave SW, Military Rd, TIBS	128
3	Auburn	Burien	Kent, SeaTac	180
6	Aurora Village	Northgate	Meridian Av N	346
7	Avondale	Kirkland	NE 85th St, NE Redmond Wy, Avondale Wy NE	248
13	Beacon Hill	Seattle CBD	Beacon Ave	36
14	Bellevue	Eastgate	Lake Hills Connector	271
15	Bellevue	Redmond	NE 8 th St, 156 th Ave NE	B
16	Bellevue	Renton	Newcastle, Factoria	240
17	Burien	Seattle CBD	Delridge, Ambaum	120
18	Burien	Seattle CBD	1 st Ave S, South Park, Airport Wy	131 TB
19	Burien	Seattle CBD	Des Moines Mem Dr, South Park	132 TB
20	Capitol Hill	White Center	South Park, Georgetown, Beacon Hill, First Hill	60
23	Central District	Seattle CBD	E Jefferson St	3STB
24	Colman Park	Seattle CBD	Leschi, Yesler	27
25	Cowen Park	Seattle CBD	University Way, I-5	73 TB EX
27	Eastgate	Bellevue	Newport Wy , S. Bellevue, Beaux Arts	222
28	Eastgate	Bellevue	Somerset, Factoria, Woodridge	246
31	Fairwood	Renton	S Puget Dr, Royal Hills	148
32	Federal Way	SeaTac	SR-99	A
33	Federal Way	Kent	Military Road	183
37	Green River CC	Kent	132 nd Ave SE	164
39	High Point	Seattle CBD	35 th Ave SW	21
40	Issaquah	Eastgate	Newport Way	271
41	Issaquah	Overlake	Sammamish, Bear Creek	269
47	Kennydale	Renton	Edmonds Av NE	909
48	Kent	Burien	Kent-DM Rd, S. 240 th St, 1 st Av S	131/166
49	Kent	Maple Valley	Kent-Kangley Road	168
50	Kent	Renton	Kent East Hill	169
51	Kent	Seattle CBD	Tukwila	150
52	Kent	Renton	84 th Av S, Lind Av SW	153
54	Kirkland	Factoria	Overlake, Crossroads, Eastgate	245
55	Lake City	Seattle CBD	NE 125 th St, Northgate, I-5	41
63	Mirror Lake	Federal Way	S 312th St	901
64	Mount Baker	Seattle CBD	31 st Av S, S Jackson St	14S
66	Mt Baker	U. District	23 rd Ave E	48 S
67	NE Tacoma	Federal Way	SW 356 th St, 9 th Ave S	182
71	Othello Station	Columbia City	Seward Park	39
74	Pacific	Auburn	Algona	917
77	Rainier Beach	Seattle CBD	Rainier Ave	7 TB
79	Rainier Beach	Capitol Hill	Rainier Ave	9
80	Redmond	Eastgate	148th Ave, Crossroads, Bellevue College	221
81	Redmond	Totem Lake	Willows Road	930
83	Renton	Burien	S 154 th St	F
84	Renton	Seattle CBD	MLK Jr Wy, I-5	101
85	Renton	Rainier Beach	West Hill, Rainier View	107
86	Renton	Seattle CBD	Skyway, S. Beacon Hill	106

Attachment A

Response to Redmond's Request of More Clarification Regarding Service Guidelines Report

Minority Corridors (Continued)				
87	Renton	Renton Highlands	NE 4 th St, Union Ave NE	105
89	Renton Highlands	Renton	NE 7th St, Edmonds Av NE	908
90	Richmond Beach	Northgate	Richmond Bch Rd, 15 th Ave NE	348
93	Shoreline	U. District	Jackson Park, 15th Av NE	373
94	Shoreline CC	Northgate	N 130 th St, Meridian Av N	345
95	Shoreline CC	Lake City	N 155 th St, Jackson Park	330
99	Tukwila	Seattle CBD	Pacific Hwy S, 4 th Ave S	124
100	Tukwila	Des Moines	McMicken Heights, Sea-Tac	156
101	Tukwila	Fairwood	S 180th St, Carr Road	155
102	Twin Lakes	Federal Way	SW Campus Dr, 1 st Ave S	903
103	Twin Lakes	Federal Way	S 320th St	187
106	U. District	Bellevue	SR-520	271
110	Wedgwood	Cowen Park	View Ridge, NE 65 th St	71
112	White Center	Seattle CBD	16 th Ave SW, SSCC	125
113	White Center	Seattle CBD	Highland Park, 4 th Ave S	23



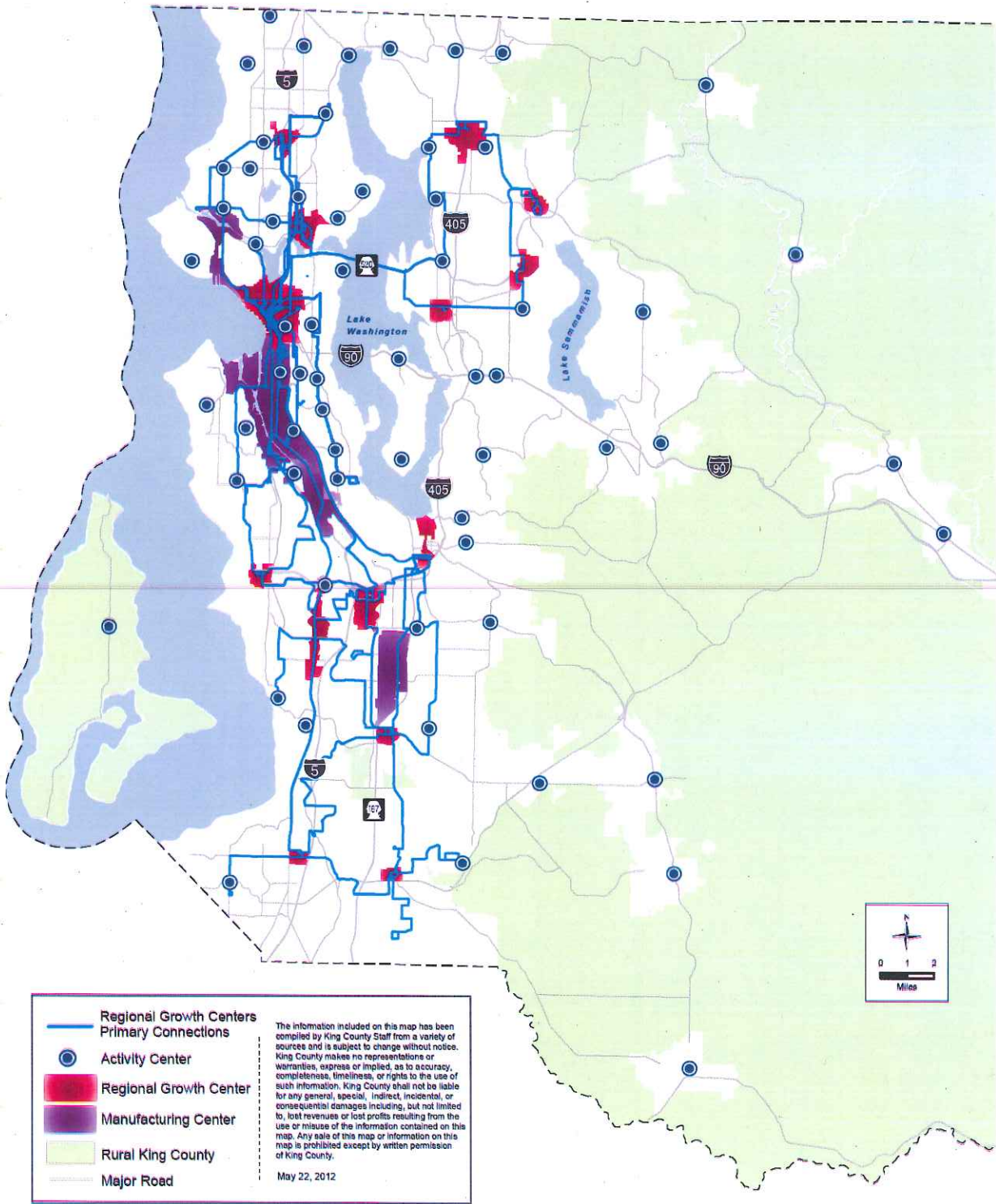
Attachment A

Response to Redmond’s Request of More Clarification Regarding Service Guidelines Report

A list and map of the corridors that receive points for serving as the primary connection between activity centers and/or between regional growth centers.

Corridors serving primary connection between regional growth centers				
3	Auburn	Burien	Kent, SeaTac	180
4	Auburn/GRCC	Federal Way	15th St SW, Lea Hill Rd	181
9	Ballard	Lake City	Holman Road, Northgate	75
10	Ballard	Seattle CBD	15th Ave W	D
11	Ballard	U. District	Wallingford (N 45th St)	44
15	Bellevue	Redmond	NE 8th St, 156th Ave NE	B
17	Burien	Seattle CBD	Delridge, Ambaum	120
19	Burien	Seattle CBD	Des Moines Mem Dr, South Park	132 TB
20	Capitol Hill	White Center	South Park, Georgetown, Beacon Hill, First Hill	60
22	Capitol Hill	Seattle CBD	Madison St	12
25	Cowen Park	Seattle CBD	University Way, I-5	73 TB EX
32	Federal Way	SeaTac	SR-99	A
33	Federal Way	Kent	Military Road	183
34	Fremont	Seattle CBD	Dexter Ave N	26/28
50	Kent	Renton	Kent East Hill	169
51	Kent	Seattle CBD	Tukwila	150
52	Kent	Renton	84th Av S, Lind Av SW	153
55	Lake City	Seattle CBD	NE 125th St, Northgate, I-5	41
68	Northgate	U. District	Roosevelt	67
78	Rainier Beach	Seattle Center	MLK Jr Wy, E John St, Denny Way	8
81	Redmond	Totem Lake	Willows Road	930
83	Renton	Burien	S 154th St	F
84	Renton	Seattle CBD	MLK Jr Wy, I-5	101
97	Totem Lake	Seattle CBD	Kirkland, SR-520	255
99	Tukwila	Seattle CBD	Pacific Hwy S, 4th Ave S	124
100	Tukwila	Des Moines	McMicken Heights, Sea-Tac	156
104	U. District	Seattle CBD	Eastlake, Fairview	70
105	U. District	Seattle CBD	Broadway	49
106	U. District	Bellevue	SR-520	271

Primary Connections Between Regional Growth, Manufacturing/Industrial Centers, Spring 2011



Attachment A

Response to Redmond's Request of More Clarification Regarding Service Guidelines Report

Corridors serving as primary connection between activity centers				
1	Admiral District	Southcenter	California Ave SW, Military Rd, TIBS	128
3	Auburn	Burien	Kent, SeaTac	180
5	Aurora Village	Seattle CBD	Aurora Ave N	E
6	Aurora Village	Northgate	Meridian Av N	346
7	Avondale	Kirkland	NE 85th St, NE Redmond Wy, Avondale Wy NE	248
8	Ballard	U. District	Green Lake, Greenwood	48 N
13	Beacon Hill	Seattle CBD	Beacon Ave	36
14	Bellevue	Eastgate	Lake Hills Connector	271
16	Bellevue	Renton	Newcastle, Factoria	240
18	Burien	Seattle CBD	1st Ave S, South Park, Airport Wy	131 TB
23	Central District	Seattle CBD	E Jefferson St	3STB
30	Enumclaw	Auburn	Auburn Wy S, SR 164	186
31	Fairwood	Renton	S Puget Dr, Royal Hills	148
35	Fremont	U. District	N 40th St	30/31
37	Green River CC	Kent	132nd Ave SE	164
38	Greenwood	Seattle CBD	Greenwood Ave N	5
41	Issaquah	Overlake	Sammamish, Bear Creek	269
42	Issaquah	North Bend	Fall City, Snoqualmie	209
43	Kenmore	Kirkland	Juanita	234
44	Kenmore	Shoreline	Lake Forest Park, Aurora Village TC	331
45	Kenmore	U. District	Lake Forest Park, Lake City	372 TB
46	Kenmore	Totem Lake	Finn Hill, Juanita	935
48	Kent	Burien	Kent-DM Rd, S. 240th St, 1st Av S	131/166
49	Kent	Maple Valley	Kent-Kangley Road	168
53	Kirkland	Bellevue	South Kirkland	230 W
54	Kirkland	Factoria	Overlake, Crossroads, Eastgate	245
56	Lake City	U. District	Lake City, Sand Point	75
57	Lake City	U. District	35th Ave NE	65
59	Madison Park	Seattle CBD	Madison St	11
61	Magnolia	Seattle CBD	34th Ave W, 28th Ave W	24
62	Mercer Island	S Mercer Island	Island Crest Way	204
66	Mt Baker	U. District	23rd Ave E	48 S
69	Northgate	Seattle CBD	Green Lake, Wallingford	16
73	Overlake	Bellevue	Sammamish Viewpoint, Northup Way	249
77	Rainier Beach	Seattle CBD	Rainier Ave	7 TB
80	Redmond	Eastgate	148th Ave, Crossroads, Bellevue College	221
82	Redmond	Fall City	Duvall, Carnation	224
86	Renton	Seattle CBD	Skyway, S. Beacon Hill	106
87	Renton	Renton Highlands	NE 4th St, Union Ave NE	105
88	Renton	Enumclaw	Maple Valley, Black Diamond	149
90	Richmond Beach	Northgate	Richmond Bch Rd, 15th Ave NE	348
94	Shoreline CC	Northgate	N 130th St, Meridian Av N	345
95	Shoreline CC	Lake City	N 155th St, Jackson Park	330
96	Shoreline CC	Greenwood	Greenwood Av N	5
98	Totem Lake	Kirkland	Kingsgate	236
101	Tukwila	Fairwood	S 180th St, Carr Road	155

Attachment A

Response to Redmond's Request of More Clarification Regarding Service Guidelines Report

Corridors serving as primary connection between activity centers (Continued)				
108	UW Bothell	Redmond	Woodinville, Cottage Lake	251
109	UW Bothell/CCC	Kirkland	132nd Ave NE, Lk Wash Voch Tech	238
111	West Seattle	Seattle CBD	Fauntleroy, Alaska Junction	C
112	White Center	Seattle CBD	16th Ave SW, SSCC	125

Primary Connections Between Activity Centers, Spring 2011

