

August 3, 2021

Official Primary and Special Election Ballot
King County, Washington

AVONDALE
0091.312

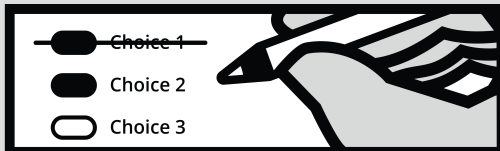
Instructions

How to vote



Completely fill in the oval next to your choice.

How to correct a mistake



To make a correction, draw a line through the entire choice. You then have the option of making a different choice by completely filling in another oval.

Optional write-in

To add a new candidate, fill in the oval next to the write-in line and print the name on the write-in line.

Begin voting here



King County

**King County Proposition No. 1
Regular Property Tax Levy for Children, Youth, Families and Communities**

King County Council passed Ordinance 19267 concerning renewed funding for support of children, youth, families and communities. If approved, this proposition would fund prevention and early intervention services and capital investments to promote health and well-being, including child care; prenatal and newborn family services; youth development programs; social, emotional and mental health supports; and homelessness prevention. It would authorize an additional six-year property tax beginning in 2022 at \$0.19 per \$1,000 of assessed valuation. The 2022 levy amount would be the base for calculating annual increases of up to 3% in 2023 - 2027. Should this proposition be:

- Approved**
- Rejected**

Executive
nonpartisan office
vote for one

- Goodspaceguy**
- Dow Constantine**
- Johnathon Crines**
- Joe Nguyen**
- Bill Hirt**
- _____

King County

Metropolitan King County Council District No. 3
nonpartisan office
vote for one

- Joe Cohen**
- Kathy Lambert**
- Sarah Perry**
- _____

Special Purpose District

**Public Hospital District No. 2
Commissioner Position No. 4**
nonpartisan office
vote for one

- Noreen Shaikh**
- Charles A. Pilcher**
- Katie Grainger**
- _____

End of Ballot

August 3, 2021

Official Primary and Special Election Ballot
King County, Washington

BEL 41-0460
0460.121

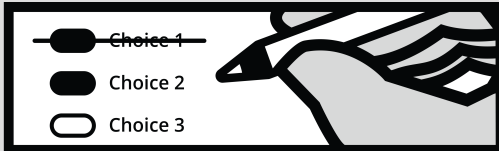
Instructions

How to vote



Completely fill in the oval next to your choice.

How to correct a mistake



To make a correction, draw a line through the entire choice. You then have the option of making a different choice by completely filling in another oval.

Optional write-in

To add a new candidate, fill in the oval next to the write-in line and print the name on the write-in line.

Begin voting here



King County

King County
Proposition No. 1
Regular Property Tax Levy for
Children, Youth, Families and
Communities

King County Council passed Ordinance 19267 concerning renewed funding for support of children, youth, families and communities. If approved, this proposition would fund prevention and early intervention services and capital investments to promote health and well-being, including child care; prenatal and newborn family services; youth development programs; social, emotional and mental health supports; and homelessness prevention. It would authorize an additional six-year property tax beginning in 2022 at \$0.19 per \$1,000 of assessed valuation. The 2022 levy amount would be the base for calculating annual increases of up to 3% in 2023 - 2027. Should this proposition be:

- Approved
- Rejected

Executive
nonpartisan office
vote for one

- Goodspaceguy
- Dow Constantine
- Johnathon Crines
- Joe Nguyen
- Bill Hirt
- _____

King County

Metropolitan King County
Council District No. 9
nonpartisan office
vote for one

- Ubax Gardheere
- Chris Franco
- Reagan Dunn
- Kim-Khanh Van
- _____

City

City of Bellevue
Council Position No. 2
nonpartisan office
vote for one

- Christie Sanam Lo
- Johan Christensen
- Dexter Borbe
- Conrad Lee
- _____

School

Bellevue School District No. 405
Director District No. 3
nonpartisan office
vote for one

- Leo Novsky
- Faye Yang
- Joyce Shui
- _____

Continue voting
other side



School

Bellevue School District No. 405

Director District No. 5

nonpartisan office

vote for one

- Gregg Smith**
- Caroline Smith**
- Jane Aras**
- Valeri Makam**
- _____

Special Purpose District

Public Hospital District No. 1

Commissioner District No. 2

nonpartisan office

vote for one

- Reyna Maria Kaut**
- Jim Griggs**
- Dustin Lambro**
- _____

Public Hospital District No. 1

Commissioner Position No. 4

nonpartisan office

vote for one

- Katie Bachand**
- Max J. Heller III**
- Monique Taylor-Swan**
- Lawton Montgomery**
- Parminder Bhatti**
- Winter Cashman**
- _____

Vote both sides of ballot

End of Ballot

August 3, 2021

Official Primary and Special Election Ballot
King County, Washington

BRYAN
2389.847

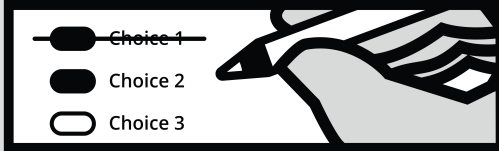
Instructions

How to vote



Completely fill in the oval next to your choice.

How to correct a mistake



To make a correction, draw a line through the entire choice. You then have the option of making a different choice by completely filling in another oval.

Optional write-in

To add a new candidate, fill in the oval next to the write-in line and print the name on the write-in line.

Begin voting here



King County

**King County Proposition No. 1
Regular Property Tax Levy for Children, Youth, Families and Communities**

King County Council passed Ordinance 19267 concerning renewed funding for support of children, youth, families and communities. If approved, this proposition would fund prevention and early intervention services and capital investments to promote health and well-being, including child care; prenatal and newborn family services; youth development programs; social, emotional and mental health supports; and homelessness prevention. It would authorize an additional six-year property tax beginning in 2022 at \$0.19 per \$1,000 of assessed valuation. The 2022 levy amount would be the base for calculating annual increases of up to 3% in 2023 - 2027. Should this proposition be:

- Approved**
- Rejected**

Executive
nonpartisan office
vote for one

- Goodspaceguy**
- Dow Constantine**
- Johnathon Crines**
- Joe Nguyen**
- Bill Hirt**
- _____

King County

Metropolitan King County Council District No. 7
nonpartisan office
vote for one

- Lydia Assefa-Dawson**
- Pete von Reichbauer**
- Dominique Torgerson**
- Saudia J. Abdullah**
- _____

End of Ballot

August 3, 2021

Official Primary and Special Election Ballot
King County, Washington

AVONDALE
0091.312

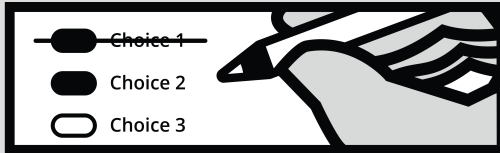
Instructions

How to vote



Completely fill in the oval next to your choice.

How to correct a mistake



To make a correction, draw a line through the entire choice. You then have the option of making a different choice by completely filling in another oval.

Optional write-in

To add a new candidate, fill in the oval next to the write-in line and print the name on the write-in line.

Begin voting here



King County

King County
Proposition No. 1
Regular Property Tax Levy for
Children, Youth, Families and
Communities

King County Council passed Ordinance 19267 concerning renewed funding for support of children, youth, families and communities. If approved, this proposition would fund prevention and early intervention services and capital investments to promote health and well-being, including child care; prenatal and newborn family services; youth development programs; social, emotional and mental health supports; and homelessness prevention. It would authorize an additional six-year property tax beginning in 2022 at \$0.19 per \$1,000 of assessed valuation. The 2022 levy amount would be the base for calculating annual increases of up to 3% in 2023 - 2027. Should this proposition be:

- Approved
- Rejected

Special Purpose District

Public Hospital District No. 2
Commissioner Position No. 4
nonpartisan office
vote for one

- Noreen Shaikh
- Charles A. Pilcher
- Katie Grainger
- _____

End of Ballot

August 3, 2021

Official Primary and Special Election Ballot
King County, Washington

BEL 41-0460
0460.121

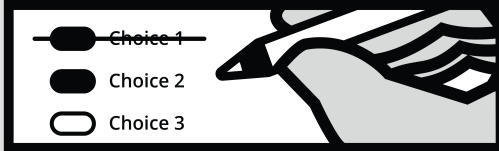
Instructions

How to vote



Completely fill in the oval next to your choice.

How to correct a mistake



To make a correction, draw a line through the entire choice. You then have the option of making a different choice by completely filling in another oval.

Optional write-in

To add a new candidate, fill in the oval next to the write-in line and print the name on the write-in line.

Begin voting here



King County

**King County Proposition No. 1
Regular Property Tax Levy for Children, Youth, Families and Communities**

King County Council passed Ordinance 19267 concerning renewed funding for support of children, youth, families and communities. If approved, this proposition would fund prevention and early intervention services and capital investments to promote health and well-being, including child care; prenatal and newborn family services; youth development programs; social, emotional and mental health supports; and homelessness prevention. It would authorize an additional six-year property tax beginning in 2022 at \$0.19 per \$1,000 of assessed valuation. The 2022 levy amount would be the base for calculating annual increases of up to 3% in 2023 - 2027. Should this proposition be:

- Approved
- Rejected

City

**City of Bellevue Council
Position No. 2**
nonpartisan office
vote for one

- Christie Sanam Lo
- Johan Christensen
- Dexter Borbe
- Conrad Lee
- _____

School

**Bellevue School District No. 405
Director District No. 3**
nonpartisan office
vote for one

- Leo Novsky
- Faye Yang
- Joyce Shui
- _____

School

**Bellevue School District No. 405
Director District No. 5**
nonpartisan office
vote for one

- Gregg Smith
- Caroline Smith
- Jane Aras
- Valeri Makam
- _____

Special Purpose District

**Public Hospital District No. 1
Commissioner District No. 2**
nonpartisan office
vote for one

- Reyna Maria Kaut
- Jim Griggs
- Dustin Lambro
- _____

**Public Hospital District No. 1
Commissioner Position No. 4**
nonpartisan office
vote for one

- Katie Bachand
- Max J. Heller III
- Monique Taylor-Swan
- Lawton Montgomery
- Parminder Bhatti
- Winter Cashman
- _____

End of Ballot

August 3, 2021

Official Primary and Special Election Ballot
King County, Washington

BRYAN
2389.847

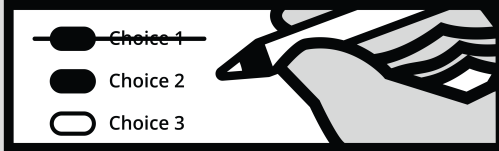
Instructions

How to vote



Completely fill in the oval next to your choice.

How to correct a mistake



To make a correction, draw a line through the entire choice. You then have the option of making a different choice by completely filling in another oval.

Optional write-in

To add a new candidate, fill in the oval next to the write-in line and print the name on the write-in line.

Begin voting here



King County

**King County
Proposition No. 1
Regular Property Tax Levy for
Children, Youth, Families and
Communities**

King County Council passed Ordinance 19267 concerning renewed funding for support of children, youth, families and communities. If approved, this proposition would fund prevention and early intervention services and capital investments to promote health and well-being, including child care; prenatal and newborn family services; youth development programs; social, emotional and mental health supports; and homelessness prevention. It would authorize an additional six-year property tax beginning in 2022 at \$0.19 per \$1,000 of assessed valuation. The 2022 levy amount would be the base for calculating annual increases of up to 3% in 2023 - 2027. Should this proposition be:

- Approved**
- Rejected**

End of Ballot

November 2, 2021
 Official General and Special Election Ballot
 King County, Washington

SHL 32-0001
 0001.802

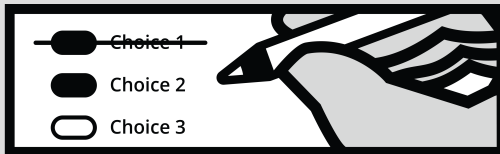
Instructions

How to vote



Completely fill in the oval next to your choice.

How to correct a mistake



To make a correction, draw a line through the entire choice. You then have the option of making a different choice by completely filling in another oval.

Optional write-in

To add a new candidate, fill in the oval next to the write-in line and print the name on the write-in line.

Begin voting here



State

**Advisory Vote No. 36
 Engrossed Second Substitute
 House Bill 1477**

The legislature imposed, without a vote of the people, a 988 behavioral health crisis response and suicide prevention tax on telephone lines, costing \$432,000,000 in its first ten years, for government spending.

This tax increase should be:

- Repealed
- Maintained

**Advisory Vote No. 37
 Engrossed Substitute Senate
 Bill 5096**

The legislature imposed, without a vote of the people, a 7% tax on capital gains in excess of \$250,000, with exceptions, costing \$5,736,000,000 in its first ten years, for government spending.

This tax increase should be:

- Repealed
- Maintained

**Advisory Vote No. 38
 Second Substitute Senate
 Bill 5315**

The legislature imposed, without a vote of the people, a tax on captive insurers in the amount of 2% of premiums from owners/affiliates, costing \$53,000,000 in its first ten years, for government spending.

This tax increase should be:

- Repealed
- Maintained

King County

**King County
 Charter Amendment No. 1
 Preamble**

Shall the Preamble of the King County Charter be amended to make a grammatical correction and to include among other charter purposes, equitable government, protection and enhancement of the urban and rural environment and economy, and promotion of a superior quality of life?

- Yes
- No

King County

**King County
 Charter Amendment No. 2
 Initiative, Referendum and Charter
 Amendment Timelines and Processes**

Shall the King County Charter be amended to comply with state law timelines for initiative, referendum and charter ballot measures and to clarify definitions and terms related to the referendum and initiative process?

- Yes
- No

Executive

nonpartisan office
 vote for one

- Dow Constantine
- Joe Nguyen
- _____

**Metropolitan King County
 Council District No. 1**

nonpartisan office
 vote for one

- Sally Caverzan
- Rod Dembowski
- _____

**Court of Appeals,
 Division No. 1, District No. 1**

Judge Position No. 3

nonpartisan office
 vote for one

- James R. Verellen
- _____

Port of Seattle

Commissioner Position No. 1

nonpartisan office
 vote for one

- Norman Z. Sigler
- Ryan Calkins
- _____

Commissioner Position No. 3

nonpartisan office
 vote for one

- Stephanie Bowman
- Hamdi Mohamed
- _____

Continue voting
 other side



Port of Seattle	Special Purpose District
-----------------	--------------------------

Commissioner Position No. 4 nonpartisan office vote for one
<input type="radio"/> Peter Steinbrueck
<input type="radio"/> Toshiko Grace Hasegawa
<input type="radio"/> _____

Shoreline Fire Department Commissioner Position No. 3 nonpartisan office vote for one
<input type="radio"/> Rod Heivilin
<input type="radio"/> _____

City

City of Shoreline Council Position No. 1 nonpartisan office vote for one
<input type="radio"/> David Y. Chen
<input type="radio"/> John Ramsdell
<input type="radio"/> _____

North City Water District Commissioner Position No. 3 nonpartisan office vote for one
<input type="radio"/> Charlotte I. Haines
<input type="radio"/> Nigel Keiffer
<input type="radio"/> _____

Vote both sides of ballot

End of Ballot

City of Shoreline Council Position No. 3 nonpartisan office vote for one
<input type="radio"/> Laura Mork
<input type="radio"/> _____

City of Shoreline Council Position No. 5 nonpartisan office vote for one
<input type="radio"/> Eben Pabee
<input type="radio"/> _____

City of Shoreline Council Position No. 7 nonpartisan office vote for one
<input type="radio"/> Christopher Roberts
<input type="radio"/> _____

School

Shoreline School District No. 412 Director District No. 2 nonpartisan office vote for one
<input type="radio"/> Tyann Nguyen
<input type="radio"/> Emily Williams
<input type="radio"/> _____

Shoreline School District No. 412 Director District No. 3 nonpartisan office vote for one
<input type="radio"/> Sarah Cohen
<input type="radio"/> _____

Special Purpose District

Shoreline Fire Department Commissioner Position No. 1 unexpired 2-year term nonpartisan office vote for one
<input type="radio"/> Barb Sullivan
<input type="radio"/> _____

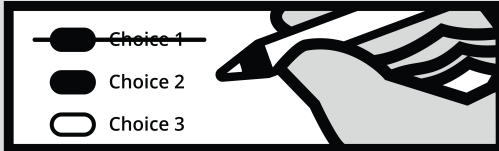
Instructions

How to vote



Completely fill in the oval next to your choice.

How to correct a mistake



To make a correction, draw a line through the entire choice. You then have the option of making a different choice by completely filling in another oval.

Optional write-in

To add a new candidate, fill in the oval next to the write-in line and print the name on the write-in line.

Begin voting here



State

**Advisory Vote No. 36
Engrossed Second Substitute
House Bill 1477**

The legislature imposed, without a vote of the people, a 988 behavioral health crisis response and suicide prevention tax on telephone lines, costing \$432,000,000 in its first ten years, for government spending.

This tax increase should be:

- Repealed
- Maintained

**Advisory Vote No. 37
Engrossed Substitute Senate
Bill 5096**

The legislature imposed, without a vote of the people, a 7% tax on capital gains in excess of \$250,000, with exceptions, costing \$5,736,000,000 in its first ten years, for government spending.

This tax increase should be:

- Repealed
- Maintained

**Advisory Vote No. 38
Second Substitute Senate
Bill 5315**

The legislature imposed, without a vote of the people, a tax on captive insurers in the amount of 2% of premiums from owners/affiliates, costing \$53,000,000 in its first ten years, for government spending.

This tax increase should be:

- Repealed
- Maintained

King County

**King County
Charter Amendment No. 1
Preamble**

Shall the Preamble of the King County Charter be amended to make a grammatical correction and to include among other charter purposes, equitable government, protection and enhancement of the urban and rural environment and economy, and promotion of a superior quality of life?

- Yes
- No

King County

**King County
Charter Amendment No. 2
Initiative, Referendum and Charter
Amendment Timelines and Processes**

Shall the King County Charter be amended to comply with state law timelines for initiative, referendum and charter ballot measures and to clarify definitions and terms related to the referendum and initiative process?

- Yes
- No

Executive

nonpartisan office
vote for one

- Dow Constantine
- Joe Nguyen
- _____

**Metropolitan King County
Council District No. 3**

nonpartisan office
vote for one

- Kathy Lambert
- Sarah Perry
- _____

**Court of Appeals,
Division No. 1, District No. 1**

Judge Position No. 3

nonpartisan office
vote for one

- James R. Verellen
- _____

Port of Seattle

Commissioner Position No. 1

nonpartisan office
vote for one

- Norman Z. Sigler
- Ryan Calkins
- _____

Commissioner Position No. 3

nonpartisan office
vote for one

- Stephanie Bowman
- Hamdi Mohamed
- _____

Continue voting
other side



Port of Seattle

Commissioner Position No. 4
nonpartisan office
vote for one

Peter Steinbrueck
 Toshiko Grace Hasegawa

School

Lake Washington School District No. 414
Director District No. 3
nonpartisan office
vote for one

Leah Choi
 Cassandra Sage

Lake Washington School District No. 414
Director District No. 4
nonpartisan office
vote for one

Vishal Misri
 Mark W. Stuart

Special Purpose District

Woodinville Fire & Rescue Commissioner Position No. 3
nonpartisan office
vote for one

Anjela Barton
 Tim Osgood

Woodinville Fire & Rescue Commissioner Position No. 5
nonpartisan office
vote for one

Roger Collins
 Art Cole

Woodinville Water District Commissioner Position No. 2
unexpired 4-year term
nonpartisan office
vote for one

Aleksandra Kachakov

Woodinville Water District Commissioner Position No. 3
nonpartisan office
vote for one

Pam Maloney

Special Purpose District

Woodinville Water District Commissioner Position No. 4
nonpartisan office
vote for one

Chuck Clarke

Public Hospital District No. 2 Commissioner District No. 1
nonpartisan office
vote for one

Al DeYoung

Public Hospital District No. 2 Commissioner Position No. 4
nonpartisan office
vote for one

Charles A. Pilcher
 Katie Grainger

Vote both sides of ballot

End of Ballot

November 2, 2021
Official General and Special Election Ballot
King County, Washington

BEL 41-0460
0460.121

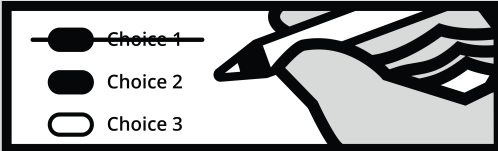
Instructions

How to vote



Completely fill in the oval next to your choice.

How to correct a mistake



To make a correction, draw a line through the entire choice. You then have the option of making a different choice by completely filling in another oval.

Optional write-in

To add a new candidate, fill in the oval next to the write-in line and print the name on the write-in line.

Begin voting here



State

**Advisory Vote No. 36
Engrossed Second Substitute
House Bill 1477**

The legislature imposed, without a vote of the people, a 988 behavioral health crisis response and suicide prevention tax on telephone lines, costing \$432,000,000 in its first ten years, for government spending.

This tax increase should be:

- Repealed
- Maintained

**Advisory Vote No. 37
Engrossed Substitute Senate
Bill 5096**

The legislature imposed, without a vote of the people, a 7% tax on capital gains in excess of \$250,000, with exceptions, costing \$5,736,000,000 in its first ten years, for government spending.

This tax increase should be:

- Repealed
- Maintained

**Advisory Vote No. 38
Second Substitute Senate
Bill 5315**

The legislature imposed, without a vote of the people, a tax on captive insurers in the amount of 2% of premiums from owners/affiliates, costing \$53,000,000 in its first ten years, for government spending.

This tax increase should be:

- Repealed
- Maintained

King County

**King County
Charter Amendment No. 1
Preamble**

Shall the Preamble of the King County Charter be amended to make a grammatical correction and to include among other charter purposes, equitable government, protection and enhancement of the urban and rural environment and economy, and promotion of a superior quality of life?

- Yes
- No

King County

**King County
Charter Amendment No. 2
Initiative, Referendum and Charter
Amendment Timelines and Processes**

Shall the King County Charter be amended to comply with state law timelines for initiative, referendum and charter ballot measures and to clarify definitions and terms related to the referendum and initiative process?

- Yes
- No

Executive

nonpartisan office
vote for one

- Dow Constantine
- Joe Nguyen
- _____

**Metropolitan King County
Council District No. 9**

nonpartisan office
vote for one

- Reagan Dunn
- Kim-Khanh Van
- _____

**Court of Appeals,
Division No. 1, District No. 1**

Judge Position No. 3

nonpartisan office
vote for one

- James R. Verellen
- _____

Port of Seattle

Commissioner Position No. 1

nonpartisan office
vote for one

- Norman Z. Sigler
- Ryan Calkins
- _____

Commissioner Position No. 3

nonpartisan office
vote for one

- Stephanie Bowman
- Hamdi Mohamed
- _____

Continue voting
other side



Port of Seattle	Special Purpose District
-----------------	--------------------------

Commissioner Position No. 4
nonpartisan office
vote for one

Peter Steinbrueck
 Toshiko Grace Hasegawa

**Public Hospital District No. 1
Commissioner District No. 3**
unexpired 4-year term
nonpartisan office
vote for one

Rita J. Miller

City	Public Hospital District No. 1 Commissioner Position No. 4
------	---

**City of Bellevue
Council Position No. 2**
nonpartisan office
vote for one

Conrad Lee
 Dexter Borbe

**Public Hospital District No. 1
Commissioner Position No. 4**
nonpartisan office
vote for one

Monique Taylor-Swan
 Katie Bachand

Vote both sides of ballot

End of Ballot

**City of Bellevue
Council Position No. 4**
nonpartisan office
vote for one

Ruth Lipscomb
 Jared Nieuwenhuis

**City of Bellevue
Council Position No. 6**
nonpartisan office
vote for one

Gina Johnson
 Lynne Robinson

School

**Bellevue School District No. 405
Director District No. 3**
nonpartisan office
vote for one

Joyce Shui
 Faye Yang

**Bellevue School District No. 405
Director District No. 5**
nonpartisan office
vote for one

Jane Aras
 Gregg Smith

Special Purpose District

**Public Hospital District No. 1
Commissioner District No. 2**
nonpartisan office
vote for one

Jim Griggs
 Dustin Lambro

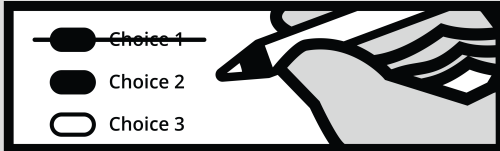
Instructions

How to vote



Completely fill in the oval next to your choice.

How to correct a mistake



To make a correction, draw a line through the entire choice. You then have the option of making a different choice by completely filling in another oval.

Optional write-in

To add a new candidate, fill in the oval next to the write-in line and print the name on the write-in line.

Begin voting here



State

**Advisory Vote No. 36
Engrossed Second Substitute
House Bill 1477**

The legislature imposed, without a vote of the people, a 988 behavioral health crisis response and suicide prevention tax on telephone lines, costing \$432,000,000 in its first ten years, for government spending.

This tax increase should be:

- Repealed
- Maintained

**Advisory Vote No. 37
Engrossed Substitute Senate
Bill 5096**

The legislature imposed, without a vote of the people, a 7% tax on capital gains in excess of \$250,000, with exceptions, costing \$5,736,000,000 in its first ten years, for government spending.

This tax increase should be:

- Repealed
- Maintained

**Advisory Vote No. 38
Second Substitute Senate
Bill 5315**

The legislature imposed, without a vote of the people, a tax on captive insurers in the amount of 2% of premiums from owners/affiliates, costing \$53,000,000 in its first ten years, for government spending.

This tax increase should be:

- Repealed
- Maintained

King County

**King County
Charter Amendment No. 1
Preamble**

Shall the Preamble of the King County Charter be amended to make a grammatical correction and to include among other charter purposes, equitable government, protection and enhancement of the urban and rural environment and economy, and promotion of a superior quality of life?

- Yes
- No

King County

**King County
Charter Amendment No. 2
Initiative, Referendum and Charter
Amendment Timelines and Processes**

Shall the King County Charter be amended to comply with state law timelines for initiative, referendum and charter ballot measures and to clarify definitions and terms related to the referendum and initiative process?

- Yes
- No

Executive

nonpartisan office
vote for one

- Dow Constantine
- Joe Nguyen
- _____

**Metropolitan King County
Council District No. 7**

nonpartisan office
vote for one

- Pete von Reichbauer
- Dominique Torgerson
- _____

**Court of Appeals,
Division No. 1, District No. 1**

Judge Position No. 3

nonpartisan office
vote for one

- James R. Verellen
- _____

Port of Seattle

Commissioner Position No. 1

nonpartisan office
vote for one

- Norman Z. Sigler
- Ryan Calkins
- _____

Commissioner Position No. 3

nonpartisan office
vote for one

- Stephanie Bowman
- Hamdi Mohamed
- _____

Continue voting
other side



Port of Seattle

Commissioner Position No. 4

nonpartisan office
vote for one

- Peter Steinbrueck
- Toshiko Grace Hasegawa
- _____

City

City of Algona

Council Position No. 2

nonpartisan office
vote for one

- Lynda L. Osborn
- _____

City of Algona

Council Position No. 4

nonpartisan office
vote for one

- Gordon Cook
- _____

School

Auburn School District No. 408

Director District No. 3

nonpartisan office
vote for one

- Melissa J. Laramie
- Dirk Dearing
- _____

Auburn School District No. 408

Director District No. 5

nonpartisan office
vote for one

- Tracy Arnold
- _____

Vote both sides of ballot

End of Ballot

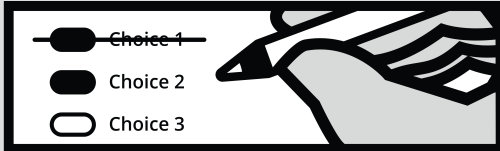
Instructions

How to vote



Completely fill in the oval next to your choice.

How to correct a mistake



To make a correction, draw a line through the entire choice. You then have the option of making a different choice by completely filling in another oval.

Optional write-in

To add a new candidate, fill in the oval next to the write-in line and print the name on the write-in line.

Begin voting here



State

**Advisory Vote No. 36
Engrossed Second Substitute
House Bill 1477**

The legislature imposed, without a vote of the people, a 988 behavioral health crisis response and suicide prevention tax on telephone lines, costing \$432,000,000 in its first ten years, for government spending.

This tax increase should be:

- Repealed
- Maintained

**Advisory Vote No. 37
Engrossed Substitute Senate
Bill 5096**

The legislature imposed, without a vote of the people, a 7% tax on capital gains in excess of \$250,000, with exceptions, costing \$5,736,000,000 in its first ten years, for government spending.

This tax increase should be:

- Repealed
- Maintained

**Advisory Vote No. 38
Second Substitute Senate
Bill 5315**

The legislature imposed, without a vote of the people, a tax on captive insurers in the amount of 2% of premiums from owners/affiliates, costing \$53,000,000 in its first ten years, for government spending.

This tax increase should be:

- Repealed
- Maintained

King County

**King County
Charter Amendment No. 1
Preamble**

Shall the Preamble of the King County Charter be amended to make a grammatical correction and to include among other charter purposes, equitable government, protection and enhancement of the urban and rural environment and economy, and promotion of a superior quality of life?

- Yes
- No

King County

**King County
Charter Amendment No. 2
Initiative, Referendum and Charter
Amendment Timelines and Processes**

Shall the King County Charter be amended to comply with state law timelines for initiative, referendum and charter ballot measures and to clarify definitions and terms related to the referendum and initiative process?

- Yes
- No

Executive

nonpartisan office
vote for one

- Dow Constantine
- Joe Nguyen
- _____

**Metropolitan King County
Council District No. 5**

nonpartisan office
vote for one

- Shukri Olow
- Dave Upthegrove
- _____

**Court of Appeals,
Division No. 1, District No. 1**

Judge Position No. 3

nonpartisan office
vote for one

- James R. Verellen
- _____

Port of Seattle

Commissioner Position No. 1

nonpartisan office
vote for one

- Norman Z. Sigler
- Ryan Calkins
- _____

Commissioner Position No. 3

nonpartisan office
vote for one

- Stephanie Bowman
- Hamdi Mohamed
- _____

Continue voting
other side



Port of Seattle	School	Special Purpose District															
Commissioner Position No. 4 nonpartisan office vote for one <input type="radio"/> Peter Steinbrueck <input type="radio"/> Toshiko Grace Hasegawa <input type="radio"/> _____	Highline School District No. 401 Proposition No. 1 Replacement of Expiring Educational Programs and Operation Levy The Board of Directors of Highline School District No. 401 adopted Resolution No. 08-21, concerning a proposition for a replacement levy for education. This proposition would authorize the District to levy the following excess taxes, replacing an expiring levy, on all taxable property within the District, for educational programs and operation expenses not funded by the State (including nurses, special education, counselors, athletics, advanced courses, extracurricular activities, transportation, teacher pay and training): <table border="1" data-bbox="597 881 1029 1107"> <thead> <tr> <th>Collection Year</th> <th>Estimated Levy Rate/\$1,000 Assessed Value</th> <th>Levy Amount</th> </tr> </thead> <tbody> <tr> <td>2023</td> <td>\$2.50</td> <td>\$63,808,067</td> </tr> <tr> <td>2024</td> <td>\$2.50</td> <td>\$66,360,390</td> </tr> <tr> <td>2025</td> <td>\$2.46</td> <td>\$67,988,856</td> </tr> <tr> <td>2026</td> <td>\$2.43</td> <td>\$69,873,487</td> </tr> </tbody> </table> all as provided in Resolution No. 08-21. Should this proposition be approved? <input type="radio"/> Yes <input type="radio"/> No	Collection Year	Estimated Levy Rate/\$1,000 Assessed Value	Levy Amount	2023	\$2.50	\$63,808,067	2024	\$2.50	\$66,360,390	2025	\$2.46	\$67,988,856	2026	\$2.43	\$69,873,487	Highline Water District Commissioner Position No. 5 nonpartisan office vote for one <input type="radio"/> Vince Koester <input type="radio"/> _____
Collection Year		Estimated Levy Rate/\$1,000 Assessed Value	Levy Amount														
2023		\$2.50	\$63,808,067														
2024		\$2.50	\$66,360,390														
2025		\$2.46	\$67,988,856														
2026	\$2.43	\$69,873,487															
City	Southwest Suburban Sewer District Commissioner Position No. 3 nonpartisan office vote for one <input type="radio"/> Susan "Suzy" Genzale <input type="radio"/> _____																
City of Des Moines Council Position No. 1 nonpartisan office vote for one <input type="radio"/> Harry Steinmetz <input type="radio"/> _____	Des Moines Pool Metropolitan Park District Commissioner Position No. 1 nonpartisan office vote for one <input type="radio"/> Joe Dusenbury <input type="radio"/> _____																
City of Des Moines Council Position No. 3 short and full term nonpartisan office vote for one <input type="radio"/> Gene Achziger <input type="radio"/> Priscilla Vargas <input type="radio"/> _____	Des Moines Pool Metropolitan Park District Commissioner Position No. 2 nonpartisan office vote for one <input type="radio"/> Shane Stender <input type="radio"/> _____																
City of Des Moines Council Position No. 5 nonpartisan office vote for one <input type="radio"/> Traci Buxton <input type="radio"/> Tad Doviak <input type="radio"/> _____	Des Moines Pool Metropolitan Park District Commissioner Position No. 4 unexpired 4-year term nonpartisan office vote for one <input type="radio"/> Holly A. Campbell <input type="radio"/> _____																
City of Des Moines Council Position No. 7 nonpartisan office vote for one <input type="radio"/> Matt Mahoney <input type="radio"/> Soleil Lewis <input type="radio"/> _____	Special Purpose District South King Fire & Rescue Commissioner Position No. 2 nonpartisan office vote for one <input type="radio"/> Julian Martinez <input type="radio"/> Bill Fuller <input type="radio"/> _____	<p style="text-align: center; color: blue;">Vote both sides of ballot</p> <p style="text-align: center;">End of Ballot</p>															
School	South King Fire & Rescue Commissioner Position No. 3 nonpartisan office vote for one <input type="radio"/> Caroline Vadino <input type="radio"/> _____																
Highline School District No. 401 Director District No. 2 nonpartisan office vote for one <input type="radio"/> Angelica M. Alvarez <input type="radio"/> Jennifer Fichamba <input type="radio"/> _____	South King Fire & Rescue Commissioner Position No. 5 unexpired 2-year term nonpartisan office vote for one <input type="radio"/> Dave Berger <input type="radio"/> _____																
Highline School District No. 401 Director District No. 3 nonpartisan office vote for one <input type="radio"/> Alexis Hlavaty <input type="radio"/> Joe Van <input type="radio"/> _____	Highline Water District Commissioner Position No. 3 nonpartisan office vote for one <input type="radio"/> Kathleen Quong-Vermeire <input type="radio"/> _____																

November 2, 2021
 Official General and Special Election Ballot
 King County, Washington

SHL 32-0001
 0001.802

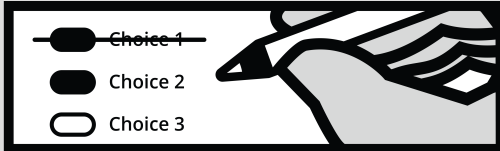
Instructions

How to vote



Completely fill in the oval next to your choice.

How to correct a mistake



To make a correction, draw a line through the entire choice. You then have the option of making a different choice by completely filling in another oval.

Optional write-in

To add a new candidate, fill in the oval next to the write-in line and print the name on the write-in line.

Begin voting here



State

**Advisory Vote No. 36
 Engrossed Second Substitute
 House Bill 1477**

The legislature imposed, without a vote of the people, a 988 behavioral health crisis response and suicide prevention tax on telephone lines, costing \$432,000,000 in its first ten years, for government spending.

This tax increase should be:

- Repealed
- Maintained

**Advisory Vote No. 37
 Engrossed Substitute Senate
 Bill 5096**

The legislature imposed, without a vote of the people, a 7% tax on capital gains in excess of \$250,000, with exceptions, costing \$5,736,000,000 in its first ten years, for government spending.

This tax increase should be:

- Repealed
- Maintained

**Advisory Vote No. 38
 Second Substitute Senate
 Bill 5315**

The legislature imposed, without a vote of the people, a tax on captive insurers in the amount of 2% of premiums from owners/affiliates, costing \$53,000,000 in its first ten years, for government spending.

This tax increase should be:

- Repealed
- Maintained

King County

**King County
 Charter Amendment No. 1
 Preamble**

Shall the Preamble of the King County Charter be amended to make a grammatical correction and to include among other charter purposes, equitable government, protection and enhancement of the urban and rural environment and economy, and promotion of a superior quality of life?

- Yes
- No

King County

**King County
 Charter Amendment No. 2
 Initiative, Referendum and Charter
 Amendment Timelines and Processes**

Shall the King County Charter be amended to comply with state law timelines for initiative, referendum and charter ballot measures and to clarify definitions and terms related to the referendum and initiative process?

- Yes
- No

**Court of Appeals,
 Division No. 1, District No. 1**

Judge Position No. 3
 nonpartisan office
 vote for one

- James R. Verellen
- _____

Port of Seattle

Commissioner Position No. 1
 nonpartisan office
 vote for one

- Norman Z. Sigler
- Ryan Calkins
- _____

Commissioner Position No. 3
 nonpartisan office
 vote for one

- Stephanie Bowman
- Hamdi Mohamed
- _____

Commissioner Position No. 4
 nonpartisan office
 vote for one

- Peter Steinbrueck
- Toshiko Grace Hasegawa
- _____

Continue voting
 other side



City	Special Purpose District
City of Shoreline Council Position No. 1 nonpartisan office vote for one <input type="radio"/> David Y. Chen <input type="radio"/> John Ramsdell <input type="radio"/> _____	North City Water District Commissioner Position No. 3 nonpartisan office vote for one <input type="radio"/> Charlotte I. Haines <input type="radio"/> Nigel Keiffer <input type="radio"/> _____

City of Shoreline Council Position No. 3 nonpartisan office vote for one <input type="radio"/> Laura Mork <input type="radio"/> _____
--

City of Shoreline Council Position No. 5 nonpartisan office vote for one <input type="radio"/> Eben Pabee <input type="radio"/> _____
--

City of Shoreline Council Position No. 7 nonpartisan office vote for one <input type="radio"/> Christopher Roberts <input type="radio"/> _____

School
Shoreline School District No. 412 Director District No. 2 nonpartisan office vote for one <input type="radio"/> Tyann Nguyen <input type="radio"/> Emily Williams <input type="radio"/> _____

Shoreline School District No. 412 Director District No. 3 nonpartisan office vote for one <input type="radio"/> Sarah Cohen <input type="radio"/> _____
--

Special Purpose District
Shoreline Fire Department Commissioner Position No. 1 unexpired 2-year term nonpartisan office vote for one <input type="radio"/> Barb Sullivan <input type="radio"/> _____

Shoreline Fire Department Commissioner Position No. 3 nonpartisan office vote for one <input type="radio"/> Rod Heivilin <input type="radio"/> _____

Vote both sides of ballot

End of Ballot

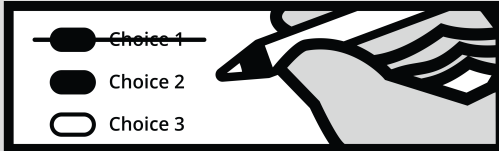
Instructions

How to vote



Completely fill in the oval next to your choice.

How to correct a mistake



To make a correction, draw a line through the entire choice. You then have the option of making a different choice by completely filling in another oval.

Optional write-in

To add a new candidate, fill in the oval next to the write-in line and print the name on the write-in line.

Begin voting here



State

Advisory Vote No. 36
Engrossed Second Substitute
House Bill 1477

The legislature imposed, without a vote of the people, a 988 behavioral health crisis response and suicide prevention tax on telephone lines, costing \$432,000,000 in its first ten years, for government spending.

This tax increase should be:

- Repealed
- Maintained

Advisory Vote No. 37
Engrossed Substitute Senate
Bill 5096

The legislature imposed, without a vote of the people, a 7% tax on capital gains in excess of \$250,000, with exceptions, costing \$5,736,000,000 in its first ten years, for government spending.

This tax increase should be:

- Repealed
- Maintained

Advisory Vote No. 38
Second Substitute Senate
Bill 5315

The legislature imposed, without a vote of the people, a tax on captive insurers in the amount of 2% of premiums from owners/affiliates, costing \$53,000,000 in its first ten years, for government spending.

This tax increase should be:

- Repealed
- Maintained

King County

King County
Charter Amendment No. 1
Preamble

Shall the Preamble of the King County Charter be amended to make a grammatical correction and to include among other charter purposes, equitable government, protection and enhancement of the urban and rural environment and economy, and promotion of a superior quality of life?

- Yes
- No

King County

King County
Charter Amendment No. 2
Initiative, Referendum and Charter
Amendment Timelines and Processes

Shall the King County Charter be amended to comply with state law timelines for initiative, referendum and charter ballot measures and to clarify definitions and terms related to the referendum and initiative process?

- Yes
- No

Court of Appeals,
Division No. 1, District No. 1

Judge Position No. 3
nonpartisan office
vote for one

- James R. Verellen
- _____

Port of Seattle

Commissioner Position No. 1
nonpartisan office
vote for one

- Norman Z. Sigler
- Ryan Calkins
- _____

Commissioner Position No. 3
nonpartisan office
vote for one

- Stephanie Bowman
- Hamdi Mohamed
- _____

Commissioner Position No. 4
nonpartisan office
vote for one

- Peter Steinbrueck
- Toshiko Grace Hasegawa
- _____

Continue voting
other side



School

**Lake Washington School District
No. 414
Director District No. 3**
nonpartisan office
vote for one

Leah Choi
 Cassandra Sage

**Lake Washington School District
No. 414
Director District No. 4**
nonpartisan office
vote for one

Vishal Misri
 Mark W. Stuart

Special Purpose District

**Public Hospital District No. 2
Commissioner District No. 1**
nonpartisan office
vote for one

Al DeYoung

**Public Hospital District No. 2
Commissioner Position No. 4**
nonpartisan office
vote for one

Charles A. Pilcher
 Katie Grainger

Vote both sides of ballot

End of Ballot

Special Purpose District

**Woodinville Fire & Rescue
Commissioner Position No. 3**
nonpartisan office
vote for one

Anjela Barton
 Tim Osgood

**Woodinville Fire & Rescue
Commissioner Position No. 5**
nonpartisan office
vote for one

Roger Collins
 Art Cole

**Woodinville Water District
Commissioner Position No. 2**
unexpired 4-year term
nonpartisan office
vote for one

Aleksandra Kachakov

**Woodinville Water District
Commissioner Position No. 3**
nonpartisan office
vote for one

Pam Maloney

**Woodinville Water District
Commissioner Position No. 4**
nonpartisan office
vote for one

Chuck Clarke

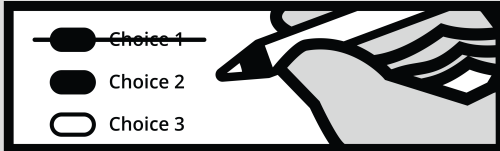
Instructions

How to vote



Completely fill in the oval next to your choice.

How to correct a mistake



To make a correction, draw a line through the entire choice. You then have the option of making a different choice by completely filling in another oval.

Optional write-in

To add a new candidate, fill in the oval next to the write-in line and print the name on the write-in line.

Begin voting here



State

**Advisory Vote No. 36
Engrossed Second Substitute
House Bill 1477**

The legislature imposed, without a vote of the people, a 988 behavioral health crisis response and suicide prevention tax on telephone lines, costing \$432,000,000 in its first ten years, for government spending.

This tax increase should be:

- Repealed
- Maintained

**Advisory Vote No. 37
Engrossed Substitute Senate
Bill 5096**

The legislature imposed, without a vote of the people, a 7% tax on capital gains in excess of \$250,000, with exceptions, costing \$5,736,000,000 in its first ten years, for government spending.

This tax increase should be:

- Repealed
- Maintained

**Advisory Vote No. 38
Second Substitute Senate
Bill 5315**

The legislature imposed, without a vote of the people, a tax on captive insurers in the amount of 2% of premiums from owners/affiliates, costing \$53,000,000 in its first ten years, for government spending.

This tax increase should be:

- Repealed
- Maintained

King County

**King County
Charter Amendment No. 1
Preamble**

Shall the Preamble of the King County Charter be amended to make a grammatical correction and to include among other charter purposes, equitable government, protection and enhancement of the urban and rural environment and economy, and promotion of a superior quality of life?

- Yes
- No

King County

**King County
Charter Amendment No. 2
Initiative, Referendum and Charter
Amendment Timelines and Processes**

Shall the King County Charter be amended to comply with state law timelines for initiative, referendum and charter ballot measures and to clarify definitions and terms related to the referendum and initiative process?

- Yes
- No

**Court of Appeals,
Division No. 1, District No. 1**

Judge Position No. 3

nonpartisan office
vote for one

- James R. Verellen
- _____

Port of Seattle

Commissioner Position No. 1

nonpartisan office
vote for one

- Norman Z. Sigler
- Ryan Calkins
- _____

Commissioner Position No. 3

nonpartisan office
vote for one

- Stephanie Bowman
- Hamdi Mohamed
- _____

Commissioner Position No. 4

nonpartisan office
vote for one

- Peter Steinbrueck
- Toshiko Grace Hasegawa
- _____

Continue voting
other side



City	Special Purpose District
City of Bellevue Council Position No. 2 nonpartisan office vote for one <input type="radio"/> Conrad Lee <input type="radio"/> Dexter Borbe <input type="radio"/> _____	Public Hospital District No. 1 Commissioner Position No. 4 nonpartisan office vote for one <input type="radio"/> Monique Taylor-Swan <input type="radio"/> Katie Bachand <input type="radio"/> _____

City of Bellevue
Council Position No. 4
 nonpartisan office
 vote for one
 Ruth Lipscomb
 Jared Nieuwenhuis

City of Bellevue
Council Position No. 6
 nonpartisan office
 vote for one
 Gina Johnson
 Lynne Robinson

School
Bellevue School District No. 405
Director District No. 3
 nonpartisan office
 vote for one
 Joyce Shui
 Faye Yang

Bellevue School District No. 405
Director District No. 5
 nonpartisan office
 vote for one
 Jane Aras
 Gregg Smith

Special Purpose District
Public Hospital District No. 1
Commissioner District No. 2
 nonpartisan office
 vote for one
 Jim Griggs
 Dustin Lambro

Public Hospital District No. 1
Commissioner District No. 3
 unexpired 4-year term
 nonpartisan office
 vote for one
 Rita J. Miller

Vote both sides of ballot

End of Ballot

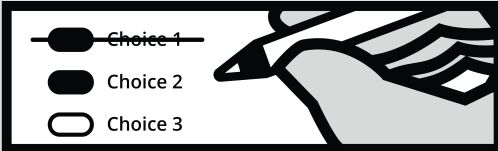
Instructions

How to vote



Completely fill in the oval next to your choice.

How to correct a mistake



To make a correction, draw a line through the entire choice. You then have the option of making a different choice by completely filling in another oval.

Optional write-in

To add a new candidate, fill in the oval next to the write-in line and print the name on the write-in line.

Begin voting here



State

Advisory Vote No. 36
Engrossed Second Substitute
House Bill 1477

The legislature imposed, without a vote of the people, a 988 behavioral health crisis response and suicide prevention tax on telephone lines, costing \$432,000,000 in its first ten years, for government spending.

This tax increase should be:

- Repealed
- Maintained

Advisory Vote No. 37
Engrossed Substitute Senate
Bill 5096

The legislature imposed, without a vote of the people, a 7% tax on capital gains in excess of \$250,000, with exceptions, costing \$5,736,000,000 in its first ten years, for government spending.

This tax increase should be:

- Repealed
- Maintained

Advisory Vote No. 38
Second Substitute Senate
Bill 5315

The legislature imposed, without a vote of the people, a tax on captive insurers in the amount of 2% of premiums from owners/affiliates, costing \$53,000,000 in its first ten years, for government spending.

This tax increase should be:

- Repealed
- Maintained

King County

King County
Charter Amendment No. 1
Preamble

Shall the Preamble of the King County Charter be amended to make a grammatical correction and to include among other charter purposes, equitable government, protection and enhancement of the urban and rural environment and economy, and promotion of a superior quality of life?

- Yes
- No

King County

King County
Charter Amendment No. 2
Initiative, Referendum and Charter
Amendment Timelines and Processes

Shall the King County Charter be amended to comply with state law timelines for initiative, referendum and charter ballot measures and to clarify definitions and terms related to the referendum and initiative process?

- Yes
- No

Court of Appeals,
Division No. 1, District No. 1

Judge Position No. 3

nonpartisan office
vote for one

- James R. Verellen
- _____

Port of Seattle

Commissioner Position No. 1

nonpartisan office
vote for one

- Norman Z. Sigler
- Ryan Calkins
- _____

Commissioner Position No. 3

nonpartisan office
vote for one

- Stephanie Bowman
- Hamdi Mohamed
- _____

Commissioner Position No. 4

nonpartisan office
vote for one

- Peter Steinbrueck
- Toshiko Grace Hasegawa
- _____

Continue voting
other side



City

**City of Algona
Council Position No. 2**

nonpartisan office
vote for one

Lynda L. Osborn

**City of Algona
Council Position No. 4**

nonpartisan office
vote for one

Gordon Cook

School

**Auburn School District No. 408
Director District No. 3**

nonpartisan office
vote for one

Melissa J. Laramie

Dirk Dearing

**Auburn School District No. 408
Director District No. 5**

nonpartisan office
vote for one

Tracy Arnold

Vote both sides of ballot

End of Ballot

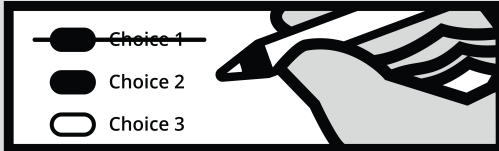
Instructions

How to vote



Completely fill in the oval next to your choice.

How to correct a mistake



To make a correction, draw a line through the entire choice. You then have the option of making a different choice by completely filling in another oval.

Optional write-in

To add a new candidate, fill in the oval next to the write-in line and print the name on the write-in line.

Begin voting here



State

**Advisory Vote No. 36
Engrossed Second Substitute
House Bill 1477**

The legislature imposed, without a vote of the people, a 988 behavioral health crisis response and suicide prevention tax on telephone lines, costing \$432,000,000 in its first ten years, for government spending.

This tax increase should be:

- Repealed
- Maintained

**Advisory Vote No. 37
Engrossed Substitute Senate
Bill 5096**

The legislature imposed, without a vote of the people, a 7% tax on capital gains in excess of \$250,000, with exceptions, costing \$5,736,000,000 in its first ten years, for government spending.

This tax increase should be:

- Repealed
- Maintained

**Advisory Vote No. 38
Second Substitute Senate
Bill 5315**

The legislature imposed, without a vote of the people, a tax on captive insurers in the amount of 2% of premiums from owners/affiliates, costing \$53,000,000 in its first ten years, for government spending.

This tax increase should be:

- Repealed
- Maintained

King County

**King County
Charter Amendment No. 1
Preamble**

Shall the Preamble of the King County Charter be amended to make a grammatical correction and to include among other charter purposes, equitable government, protection and enhancement of the urban and rural environment and economy, and promotion of a superior quality of life?

- Yes
- No

King County

**King County
Charter Amendment No. 2
Initiative, Referendum and Charter
Amendment Timelines and Processes**

Shall the King County Charter be amended to comply with state law timelines for initiative, referendum and charter ballot measures and to clarify definitions and terms related to the referendum and initiative process?

- Yes
- No

**Court of Appeals,
Division No. 1, District No. 1**

Judge Position No. 3
nonpartisan office
vote for one

- James R. Verellen
- _____

Port of Seattle

Commissioner Position No. 1
nonpartisan office
vote for one

- Norman Z. Sigler
- Ryan Calkins
- _____

Commissioner Position No. 3
nonpartisan office
vote for one

- Stephanie Bowman
- Hamdi Mohamed
- _____

Commissioner Position No. 4
nonpartisan office
vote for one

- Peter Steinbrueck
- Toshiko Grace Hasegawa
- _____

Continue voting
other side



City	School	Special Purpose District															
City of Des Moines Council Position No. 1 nonpartisan office vote for one <input type="radio"/> Harry Steinmetz <input type="radio"/> _____	Highline School District No. 401 Proposition No. 1 Replacement of Expiring Educational Programs and Operation Levy The Board of Directors of Highline School District No. 401 adopted Resolution No. 08-21, concerning a proposition for a replacement levy for education. This proposition would authorize the District to levy the following excess taxes, replacing an expiring levy, on all taxable property within the District, for educational programs and operation expenses not funded by the State (including nurses, special education, counselors, athletics, advanced courses, extracurricular activities, transportation, teacher pay and training): <table border="1" style="margin: 10px auto; width: 80%;"> <thead> <tr> <th>Collection Year</th> <th>Estimated Levy Rate/\$1,000 Assessed Value</th> <th>Levy Amount</th> </tr> </thead> <tbody> <tr> <td>2023</td> <td>\$2.50</td> <td>\$63,808,067</td> </tr> <tr> <td>2024</td> <td>\$2.50</td> <td>\$66,360,390</td> </tr> <tr> <td>2025</td> <td>\$2.46</td> <td>\$67,988,856</td> </tr> <tr> <td>2026</td> <td>\$2.43</td> <td>\$69,873,487</td> </tr> </tbody> </table> all as provided in Resolution No. 08-21. Should this proposition be approved? <input type="radio"/> Yes <input type="radio"/> No	Collection Year	Estimated Levy Rate/\$1,000 Assessed Value	Levy Amount	2023	\$2.50	\$63,808,067	2024	\$2.50	\$66,360,390	2025	\$2.46	\$67,988,856	2026	\$2.43	\$69,873,487	Highline Water District Commissioner Position No. 5 nonpartisan office vote for one <input type="radio"/> Vince Koester <input type="radio"/> _____
Collection Year		Estimated Levy Rate/\$1,000 Assessed Value	Levy Amount														
2023		\$2.50	\$63,808,067														
2024		\$2.50	\$66,360,390														
2025	\$2.46	\$67,988,856															
2026	\$2.43	\$69,873,487															
City of Des Moines Council Position No. 3 short and full term nonpartisan office vote for one <input type="radio"/> Gene Achziger <input type="radio"/> Priscilla Vargas <input type="radio"/> _____	Southwest Suburban Sewer District Commissioner Position No. 3 nonpartisan office vote for one <input type="radio"/> Susan "Suzy" Genzale <input type="radio"/> _____																
City of Des Moines Council Position No. 5 nonpartisan office vote for one <input type="radio"/> Traci Buxton <input type="radio"/> Tad Doviak <input type="radio"/> _____	Des Moines Pool Metropolitan Park District Commissioner Position No. 1 nonpartisan office vote for one <input type="radio"/> Joe Dusenbury <input type="radio"/> _____																
City of Des Moines Council Position No. 7 nonpartisan office vote for one <input type="radio"/> Matt Mahoney <input type="radio"/> Soleil Lewis <input type="radio"/> _____	Des Moines Pool Metropolitan Park District Commissioner Position No. 2 nonpartisan office vote for one <input type="radio"/> Shane Stender <input type="radio"/> _____																
School	Special Purpose District	Des Moines Pool Metropolitan Park District Commissioner Position No. 4 unexpired 4-year term nonpartisan office vote for one <input type="radio"/> Holly A. Campbell <input type="radio"/> _____															
Highline School District No. 401 Director District No. 2 nonpartisan office vote for one <input type="radio"/> Angelica M. Alvarez <input type="radio"/> Jennifer Fichamba <input type="radio"/> _____	South King Fire & Rescue Commissioner Position No. 2 nonpartisan office vote for one <input type="radio"/> Julian Martinez <input type="radio"/> Bill Fuller <input type="radio"/> _____	<p style="color: blue; font-weight: bold; font-size: 1.2em;">Vote both sides of ballot</p> <p style="font-weight: bold; font-size: 1.5em;">End of Ballot</p>															
Highline School District No. 401 Director District No. 3 nonpartisan office vote for one <input type="radio"/> Alexis Hlavaty <input type="radio"/> Joe Van <input type="radio"/> _____	South King Fire & Rescue Commissioner Position No. 3 nonpartisan office vote for one <input type="radio"/> Caroline Vadino <input type="radio"/> _____																
	South King Fire & Rescue Commissioner Position No. 5 unexpired 2-year term nonpartisan office vote for one <input type="radio"/> Dave Berger <input type="radio"/> _____																
	Highline Water District Commissioner Position No. 3 nonpartisan office vote for one <input type="radio"/> Kathleen Quong-Vermeire <input type="radio"/> _____																